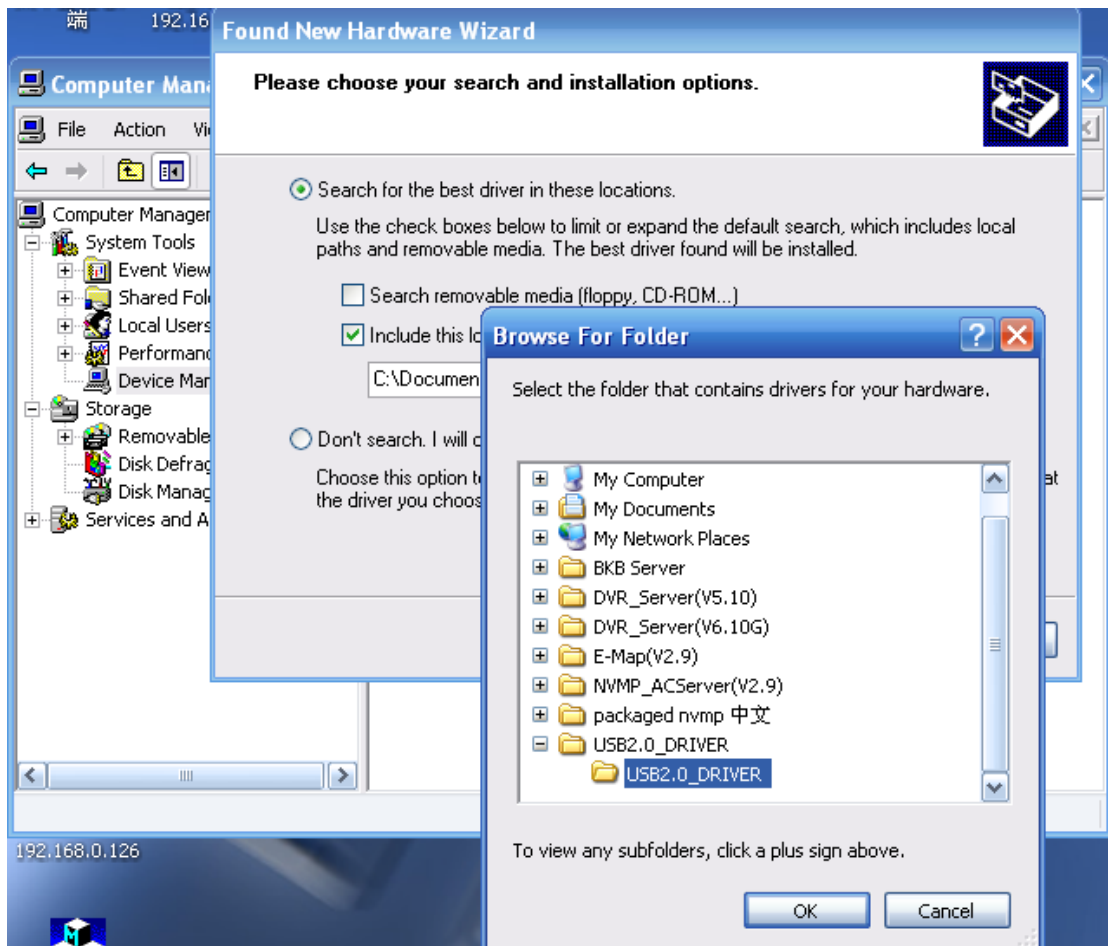


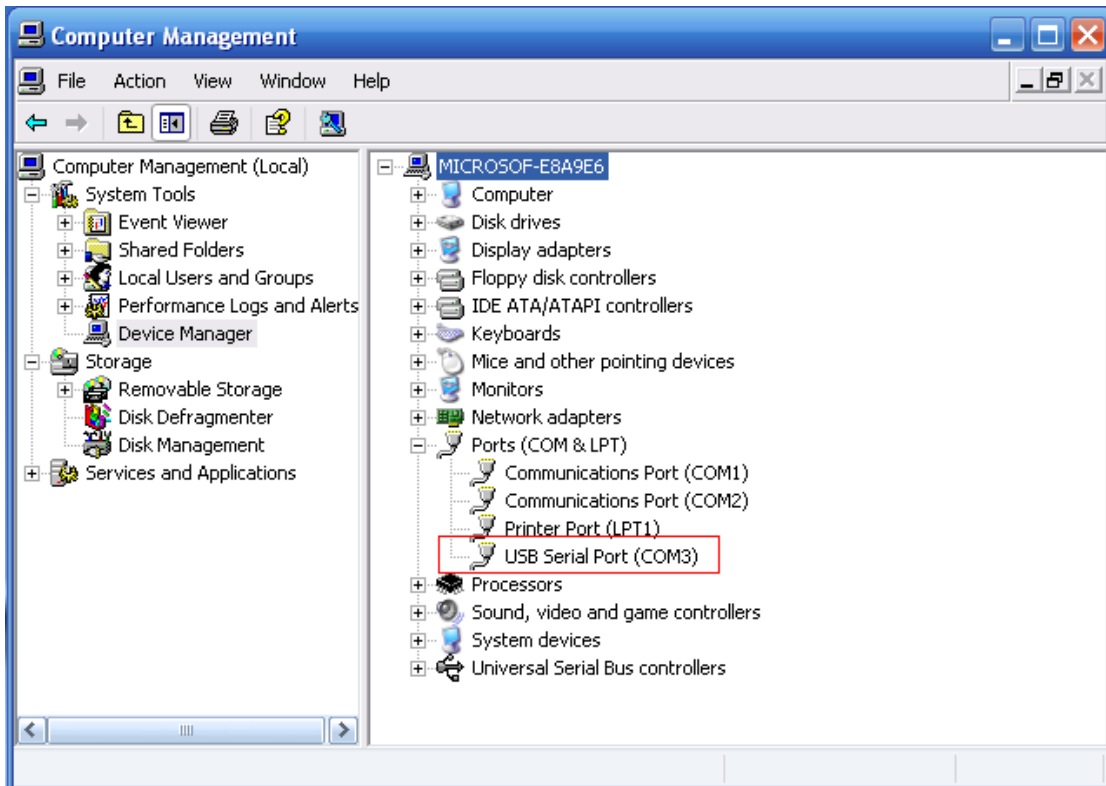
XtendLan

GSM modem system installation

When you insert the GSM MODEM, First, you should install the driver first



When the driver is finished, the interface will display:



SMS SETUP

SMS Device <input type="text" value="SmsPdu"/>	SMS Use Com Port <input type="text" value="COM3"/>	<input type="button" value="Send test message"/>
DVR Host Name <input type="text" value="dvr"/>		
Mobile Number 1 <input type="text" value="013102389665"/>	Mobile Number 2 <input type="text" value="0139123456789"/>	
Mobile Number 3 <input type="text"/>		