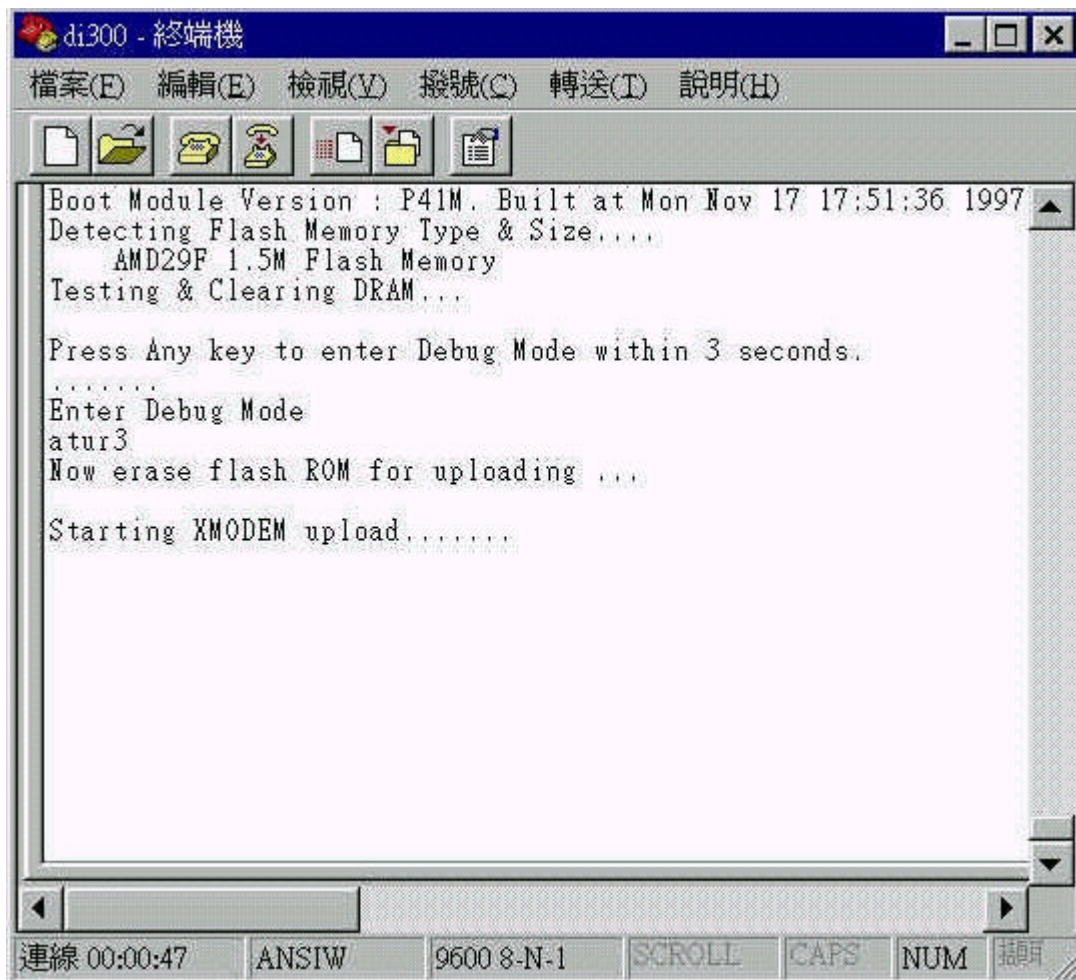


How to reset the password of IRT-1001/1002 to default?

Ans: Please follows those procedures to reset it.

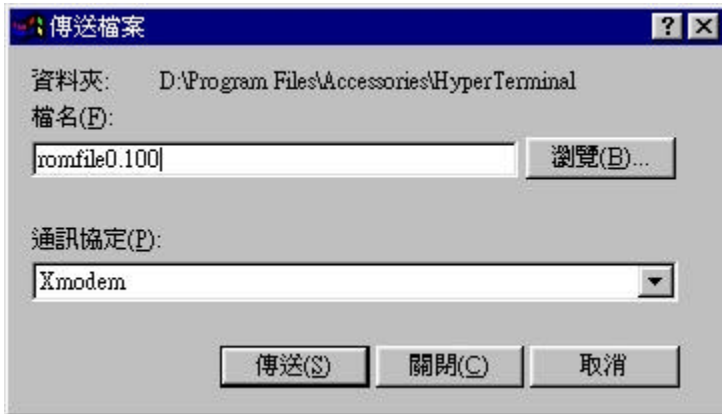
1. Please use Hyperterminal provided with win95/98/NT or other terminal software to connect to IRT-1001 with the following settings:
Baud Rate: 9600
None parity, 8 Data bits, 1 Stop bit
2. After connected, the screen will show
"Press Any key to enter Debug Mode within 3 seconds....."
Press any key within 3 seconds to get into debug mode.
3. Input "atur3" then press Enter, the screen will show
"Now erase flash ROM for uploading ..."
"Starting XMODEM upload....."
As the following picture:



4. Send the attached file to IRT-1001 by select "Transfer" -> "Send file.."

A windows will appear as following.

Please set the file location and Xmodem then press "Send"



5. After a few seconds, the screen will show

Programing successful...

OK

6. Input "atgo" and press enter,after a few of selftest, it will appear

"Enter Password :"

Input "1234"then you can get into SMT(System Management Terminal) screen.

If you have any further question, please feel free to contact us.