

Trademarks

Copyright © PLANET Technology Corp. 2003.

Contents subject to revision without prior notice.

PLANET is a registered trademark of PLANET Technology Corp. All other trademarks belong to their respective owners.

Disclaimer

PLANET Technology does not warrant that the hardware will work properly in all environments and applications, and makes no warranty and representation, either implied or expressed, with respect to the quality, performance, merchantability, or fitness for a particular purpose.

PLANET has made every effort to ensure that this User's Manual is accurate; PLANET disclaims liability for any inaccuracies or omissions that may have occurred.

Information in this User's Manual is subject to change without notice and does not represent a commitment on the part of PLANET. PLANET assumes no responsibility for any inaccuracies that may be contained in this User's Manual. PLANET makes no commitment to update or keep current the information in this User's Manual, and reserves the right to make improvements to this User's Manual and/or to the products described in this User's Manual, at any time without notice.

If you find information in this manual that is incorrect, misleading, or incomplete, we would appreciate your comments and suggestions.

FCC Warning

This equipment has been tested and found to comply with the limits for a Class A digital device, pursuant to Part 15 of the FCC Rules. These limits are designed to provide reasonable protection against harmful interference when the equipment is operated in a commercial environment. This equipment generates, uses, and can radiate radio frequency energy and, if not installed and used in accordance with the Instruction manual, may cause harmful interference to radio communications. Operation of this equipment in a residential area is likely to cause harmful interference in which case the user will be required to correct the interference at his own expense.

CE Mark Warning

This is a Class B product. In a domestic environment, this product may cause radio interference, in which case the user may be required to take adequate measures.

Revision

PLANET Fast Ethernet Switch User's Manual

FOR MODELS: FNSW-1601, FNSW-2401

Part No.: 2010-000020-000

Table of Contents

Chapter 1 Unpacking Information	1
Chapter 2 Product Introduction	3
2.1 Key Features	3
2.2 Front Panel	3
2.2.1 Ports Speed	3
2.2.2 Cabling	4
2.2.3 Status LEDs	4
2.3 The Rear Panel	4
2.3.1 Power Connector	4
Chapter 3 Installation	7
3.1 Rack-Mount Installation	7
3.2 Desktop Installation	7
Chapter 4 Optimizing Configuration	9
4.1 Prior to Installation	9
4.2 Half- and Full-Duplex	9
4.3 Fast Ethernet	9
4.4 Auto-Negotiation	10
4.5 MAC Address Table	10
4.6 Sample Application	11
Chapter 5 Troubleshooting	13
Chapter 6 Product Specifications	15
Chapter 7 RJ-45 Pin Assignment	17
7.1 Straight-Through/Crossover Cable	17

Chapter 1 ***Unpacking Information***

Thank you for purchasing a PLANET Fast Ethernet Switches. Before continuing, please check the contents of the product package. This product package should contain the following items:

- One Fast Ethernet Switch
- One Power Cord
- Two Rack-Mounting Brackets with Attachment Screws
- This User's Manual

Please inform your local dealer/supplier immediately if any item is found to be defective, damaged or missing. Retain the original packaging (carton), including the packing materials, and use them to re-pack the product in the unlikely event there is a need to return it to us for repair.



Chapter 2

Product Introduction

Fast Ethernet Switches are multi-speed, versatile network de-vices combining both standard and “Big-Pipe” ports under the same hood.

2.1 Key Features

- Compliant with IEEE802.3 and 802.3u standards for 100Base-TX
- 16/24-port Fast Ethernet Switch, pure 10/100Base-TX
- Wire-speed “Store-and-Forward” filtering/forwarding eliminates bad data packets with minimal delay
- 100Base-TX ports automatically sense and set optimal line speed from 10/20, 100/200Mbps, All 100Base-TX port support Auto-Negotiation function
- Shared buffer memory and up to 8K entry MAC source address table make for fast handling of data packets
- Flow control to eliminate packets loss
- Internal, full-range power supply suitable for worldwide use
- Auto MDI/MDIX on each port for easy switch/hub cas-cading

2.2 Front Panel



Figure 1: Front View of the FNSW-1601



Figure 2: Front View of the FNSW-2401

2.2.1 Ports Speed

■ 100Base-TX

All 100Base-TX ports come with auto-negotiation capability. They automatically support 100Base-TX and 10Base-T networks. Users only need to plug a working network device into one of the 100Base-TX ports, then turn on the hub. The port will automatically runs in 10Mbps, 20Mbps, 100Mbps or 200Mbps after the negotiation with the connected device.

2.2.2 Cabling

Fast Ethernet Switch 100Base-TX ports use RJ-45 sockets -- similar to phone jacks -- for connection of unshielded twisted-pair cable (UTP). The IEEE 802.3u Fast Ethernet standard requires Category 5 UTP for 100Mbps 100Base-TX. 10Base-T networks can use Cat.3, 4, or 5 UTP (see table A)

Port Type	Cable Type	Connector
10Base-T	Cat 3, 4, 5	RJ-45
100Base-TX	Cat.5/5e UTP	RJ-45

Table A: Supported port list

2.2.3 Status LEDs

One green LED to show power On/Off is on the front panel. Also, each port has three status LED indicators, as shown below.

PWR	This indicator lights green when the Switch is receiving power, otherwise, it is off.
LNK/ACT	This indicator light green when the port is connected to an Ethernet or Fast Ethernet station, if the indicator is blinking green, it will be transmitting or receiving data on the network.
100	This LED indicator light orange when a Fast Ethernet station is connected. It remains OFF, if an Ethernet station is connected.

Table B: The Switch's Port-LED Functions

2.3 The Rear Panel



Figure 3: Rear View for the Switch

2.3.1 Power Connector

The Power Connector is designed to be used with the power cord included in the product package. Attach the female end of the cord to the power connector and the male end of the cord to a grounded power outlet. The accepted power range is from 100VAC to 240VAC, 50/60Hz.

Note:

The Switch is a power-required device, it means, the Switch will not work until it is powered. If your networked PCs will need to transmit data all the

time, please consider use an UPS (Uninterrupted Power Supply) for your Switch. It will prevent you from network data loss.

In some area, installing a surge suppression device may also help to protect your Switch from being damaged by unregulated surge or current to the Switch or the power adapter



Chapter 3 ***Installation***

The Fast Ethernet Switch do NOT require software configuration. Users can immediately use any of the features of this product simply by attaching the cables and turning on the power.

To get the best use of these Fast Ethernet Switch models, many things need to be considered first. See Section 4, OPTIMIZING CONFIGURATION for details.

3.1 Rack-Mount Installation

Most users prefer to attach the power cord to the hub before installation in a network rack. Do not plug the other end of the cord into a power outlet until after the Switch is installed.

For mounting the Fast Ethernet Switch in a network rack, first attach the rack-mount brackets to the side of the hub with screws. (Both brackets and screws are included in the product package.) Slide the hub into the rack and align the holes in the bracket with the corresponding holes in the network rack. Attach the bracket to the rack with the enclosed screws.

3.2 Desktop Installation

To locate the Fast Ethernet Switch models on a desktop, first attach the four rubber feet to the bottom of the hub, one in each corner. Place the hub on a clean, flat desk or table-top close to a power outlet. Make sure there is no hindrance behind the fan of the hub

Plug in all network connections and then turn the switch on via plug in the power cord.



Chapter 4

Optimizing Configuration

4.1 Prior to Installation

Before installing the Fast Ethernet Switch models and connecting network devices, it is important to plan the new network layout. Consider:

- **Dedicated Bandwidth:** File servers and other high-traffic hardware can improve if they have their own direct connection with dedicated 10 or 100Mbps bandwidth.
- **Full-Duplex:** Determine which devices would benefit from a Full Duplex connection and check that they support it.
- **Fast Ethernet:** 100Base-TX and 100Base-FX have different rules for cable and distance. Make sure these are followed.
- **Auto-Negotiation:** Devices with different speeds may be easily swapped when the other end of the cable is fixed to a port with auto-negotiation.

4.2 Half- and Full-Duplex

The Fast Ethernet Switch supports both Half- and Full-Duplex modes for 10Base-T and 100Base-TX. Half-Duplex mode is the traditional data transfer mode: one station sends data while other devices wait for the first to finish.

Full-Duplex is the simultaneous transmission and receiving of data. It is only possible between two devices with a dedicated link (e.g., switch-to-switch, switch-to-PC). Both of the devices must be capable of, and set to, Full-Duplex

100Base-TX ports use auto-negotiation to detect and set the line's operating mode.

4.3 Fast Ethernet

100Base-TX and 100Base-FX are called "Fast Ethernet." This is because they use the Ethernet CSMA/CD access rules and data packet structure, but data travels ten times faster (100Mbps) than traditional 10Mbps Ethernet.

Below is a list of the cable types and connectors that supported by Fast Ethernet Switch models for 10Base-T, 100Base-TX, and 100Base-FX networks.

PORT TYPE	Cables Type	Connector
100BASE-TX	Cat. 5 UTP only	RJ-45
10BASE-T	Cat.3, 4, 5 UTP	RJ-45

Table C: Cables & Connectors Supported by the Switch

In many cases, 10Base-T LANs can quickly and easily upgrade to 100Base-TX networks.

4.4 Auto-Negotiation

The 100Base-TX ports on the Fast Ethernet Switch have built-in "Auto-Negotiation". This technology automatically sets the best possible bandwidth when a connection is established with an-other network device (usually at Power On or Reset). This is done by detect the mode and speed at the second device is capable of. The 100Base-TX devices can connect with the 100Base-TX port in either Half- or Full-Duplex mode.

If attached device is:	100Base-TX port will set to:
100Mbps, no auto-negotiation	100Mbps(100Base-TX, Half-Duplex)
100Mbps, with auto-negotiation	200Mbps (100Base-TX, Full-Duplex)
10Mbps, no auto-negotiation	10Mbps(10Base-T, Half-Duplex)
10Mbps, with auto-negotiation	20Mbps(10Base-T, Full-Duplex)

Table D: Speed & Duplex mode detected by the switch

4.5 MAC Address Table

This 6-byte ID is called the MAC (Media Access Control) Ad-dress. Every Ethernet data packet includes both source and destination addresses.

These Fast Ethernet Switch models can automatically learn and store up to 8K MAC addresses. The MAC address table is volatile: it disappears when the switch is powered off or reset.

Note: When the network needs reconfiguration, we recommend turning off the power first. After all nodes have been moved, power on the switch to rebuild the internal MAC address table.

4.6 Sample Application

The optimal application for the Fast Ethernet Switch, no matter with the extension module or not, is as a “big pipe” backbone interconnecting file servers with bandwidth-hungry workgroups, departments, and offices.

In the figure, the first FNSW-1601(or FNSW-2401) links to an-other hub’s Uplink (MDI-II) port, some ports connect to 100Mbps Workstations, and attached to file servers at 200Mbps.

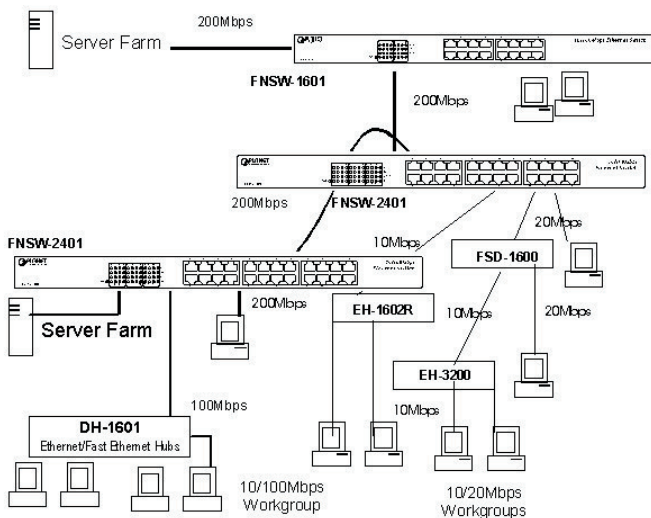


Figure 5: Sample Application



Chapter 5

Troubleshooting

- Symptom Link LED does not lit after cable is connected to the port.
- Checkpoint Verify that the other end of the cable is connected to a device that is powered on and on-line. For UTP cable connection to another hub, verify that only one end of the cable is connected to a "MDI-II" Uplink port.
- Symptom 100Base-TX port Link LED is lit, Collision LED is blinking, but traffic is irregular.
- Checkpoint Check that the attached device is not set to dedicated full-duplex. (Some devices use a physical or software switch to change duplex modes. Auto-negotiation may not recognize this type of full-duplex setting.

ALWAYS CHECK THAT THE CABLE, LINK DISTANCES, AND OVERALL NETWORK DIAMETER ARE WITHIN SPEC. FOR THE NETWORK TYPE.



Chapter 6

Product Specifications

PRODUCT	FNSW-1601	FNSW-2401
PORTS	16	24
	10/100/Base-TX RJ-45	10/100Base-TX RJ-45
MAC ADDRESSES	8K-entry	8K-entry
BANDWIDTH	100Base-TX, 200/100/20/10Mbps, Auto-Negotiation	
FILTER/ FORWARD RATE	148,800 packets/second per port @ 100Mbps, max.	
LEDs	1 for Power On/Off 2 per port for LNK/ACT, 100	
MEDIA SUPPORT	100Base-TX Cat. 5 UTP, RJ-45 10Base-T Cat. 3, 4, 5 UTP RJ-45	
POWER SUPPLY	Auto-switching. Input voltage: 100~240 VAC, 50 ~ 60Hz	
POWER CONSUMPTION	6 watt / 20 BTU	8 watt / 27 BTU
ENVIRONMENT	Operating Temp: 0 ~ 50°C (32 ~ 122°F) Storage Temp: -30 ~ 70°C (-22 ~ 158°F) Humidity 0 ~ 90% non-condensing	
DIMENSIONS	440 x 120 x 44 mm	
STANDARD COMPLIANCE		
NETWORK	IEEE802.3 (10Base-T), IEEE802.3u (100Base-TX) IEEE802.3x (Flow-Control)	
EMISSION	FCC Class A, CE	
SAFETY	UL, TUV/GS (EN60950)	

Table E: Product Specifications



Chapter 7

RJ-45 Pin Assignment

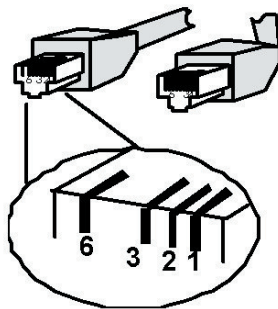
Pin	Numbered Ports(MDI-X port)	Uplink Port (MDI-II port)
1	Input Receive Data +	Output Transmit Data +
2	Input Receive Data -	Output Transmit Data-
3	Output Transmit Data+	Input Receive Data +
6	Output Transmit Data-	Input Receive Data -
4,5,7,8	Not used	Not used

Schematics for both straight and crossover twisted-pair cable are shown below. (Note that crossover cable is only required if you cascade hubs via the RJ-45 station ports; i.e. the Uplink port is not used.)

7.1 Straight-Through/Crossover Cable

The pin assignment of the cables both ends should be as below:

Straight-through		Crossover	
Hub (MDI-X)	Adapter(MDI-II)	Hub (MDI-X)	Hub (MDI-X)
Pin 1	Pin 1	Pin 1	Pin 3
Pin 2	Pin 2	Pin 2	Pin 6
Pin 3	Pin 3	Pin 3	Pin 1
Pin 6	Pin 6	Pin 6	Pin 2



Part No.:2010-000020-000

