

User's Manual



- ▶ **H.264 Internet Video Server**
IVS-H125 / IVS-H125P



Copyright

Copyright © 2012 by PLANET Technology Corp. All rights reserved. No part of this publication may be reproduced, transmitted, transcribed, stored in a retrieval system, or translated into any language or computer language, in any form or by any means, electronic, mechanical, magnetic, optical, chemical, manual or otherwise, without the prior written permission of PLANET.

PLANET makes no representations or warranties, either expressed or implied, with respect to the contents hereof and specifically disclaims any warranties, merchantability or fitness for any particular purpose. Any software described in this manual is sold or licensed "as is". Should the programs prove defective following their purchase, the buyer (and not PLANET, its distributor, or its dealer) assumes the entire cost of all necessary servicing, repair, and any incidental or consequential damages resulting from any defect in the software. Further, PLANET reserves the right to revise this publication and to make changes from time to time in the contents hereof without obligation to notify any person of such revision or changes.

All brand and product names mentioned in this manual are trademarks and/or registered trademarks of their respective holders.

Federal Communication Commission Interference Statement

This equipment has been tested and found to comply with the limits for a Class B digital device, pursuant to Part 15 of FCC Rules. These limits are designed to provide reasonable protection against harmful interference in a residential installation. This equipment generates, uses, and can radiate radio frequency energy and, if not installed and used in accordance with the instructions, may cause harmful interference to radio communications. However, there is no guarantee that interference will not occur in a particular installation. If this equipment does cause harmful interference to radio or television reception, which can be determined by turning the equipment off and on, the user is encouraged to try to correct the interference by one or more of the following measures:

1. Reorient or relocate the receiving antenna.
2. Increase the separation between the equipment and receiver.
3. Connect the equipment into an outlet on a circuit different from that to which the receiver is connected.
4. Consult the dealer or an experienced radio technician for help.

FCC Caution

To assure continued compliance. (example-use only shielded interface cables when connecting to computer or peripheral devices). Any changes or modifications not expressly approved by the party responsible for compliance could void the user's authority to operate the equipment.

This device complies with Part 15 of the FCC Rules. Operation is subject to the Following two conditions: (1) This device may not cause harmful interference, and (2) this Device must accept any interference received, including interference that may cause undesired operation.

Federal Communication Commission (FCC) Radiation Exposure Statement

This equipment complies with FCC radiation exposure set forth for an uncontrolled environment. In order to avoid the possibility of exceeding the FCC radio frequency exposure limits, human proximity to the antenna shall not be less than 20 cm (8 inches) during normal operation.

Safety

This equipment is designed with the utmost care for the safety of those who install and use it. However, special attention must be paid to the dangers of electric shock and static electricity when working with electrical equipment. All guidelines of this and of the computer manufacture must therefore be allowed at all times to ensure the safe use of the equipment.

CE Mark Warning

This is a Class B product. In a domestic environment, this product may cause radio interference, in which case the user may be required to take adequate measures.

WEEE Regulation



To avoid the potential effects on the environment and human health as a result of the presence of hazardous substances in electrical and electronic equipment, end users of electrical and electronic equipment should understand the meaning of the crossed-out wheeled bin symbol. Do not dispose of WEEE as unsorted municipal waste and have to collect such WEEE separately.

Revision

User's Manual for PLANET H.264 (PoE)Internet Video Server
Model: IVS-H125 / IVS-H125P
Rev: 1.0 (Sep. 2012)
Part No. EM-IVS-H125 / IVS-H125P

Table of Contents

Chapter 1. Product Introduction	6
1.1. Package Contents	6
1.2. Product Description	6
1.3. PRODUCT FEATURES	9
1.4. Product Specification	10
Chapter 2. Hardware Interface	12
2.1. Left-hand side Panel	12
2.2. Right-hand side Panel	13
2.3. Hardware Installation	14
2.3.1 Stand-alone Installation	14
2.3.2 Chassis Installation and Rack Mounting (IVS-H125 only) ..	15
2.3.3 Wall Mount Installation	16
2.3.4 [Optional] - DIN-Rail Mount Installation	16
Chapter 3. Initial Utility Installation	18
3.1. Preparation	22
3.1.1. Search and View by PLANET IP Wizard II	22
3.2. Using UPnP of Windows XP or Vista or Win7	25
Chapter 4. Installation Guide	26
4.1. System Requirements	26
4.2. Before You Begin	27
Connecting to Internet Camera	27
Chapter 5. Web Configuration for Live View	29
5.1. Live View	29
5.2. ActiveX Control	31
5.2.1. Digital Zoom	32
5.2.2. Snapshot	32
5.2.3. Record	33
5.2.4. Volume	34
5.2.5. About	34
Chapter 6. Configuration & Operation	35
6.1. Network Configuration	35
6.1.1 Network	35
6.1.2. IPv6 function	37
6.1.3. HTTPS	37
6.1.4. DDNS server	38
6.1.5. PPPoE	40
6.1.6. Streaming	41
6.1.7. UPnP	42
6.1.8. Bonjour	43
6.1.9. ONVIF	43
6.1.10. IP Filter	44
6.1.11. IP Notification	45
6.2. Adjust Camera Configuration	47

6.2.1. Picture	47
6.2.2. PTZ Setting	48
6.2.3. Preset Setting	49
6.2.4. Privacy Mask.....	50
6.2.5. PTZ Setting	51
6.2.6. Preset Setting	53
6.2.7. Tour Setting	53
6.3. System	54
6.3.1. System	54
6.3.2. Date & Time	55
6.3.3. Maintenance	57
6.4. Video.....	59
6.4.1. Common	59
6.4.2. Video Profile.....	60
6.4.3. ROI	62
6.5. Audio Configuration.....	62
6.6. User Privilege Access Configuration	63
6.7. E-Mail Configuration.....	65
6.8. Object Detection	66
6.9. Audio Detection.....	67
6.10. Storage Configuration.....	68
6.10.1. SD Card.....	68
6.10.2. SAMBA Server	69
6.11. Continuous Recording	70
6.12. Recording List.....	70
6.12.1. Recording List.....	70
6.12.2. Continuous Recording List	71
6.13. Event Server Configuration	72
6.13.1 FTP Server	72
6.13.2. FTP Server	73
6.13.3. HTTP Server	74
6.13.4. SAMBA Server	75
6.14. Event Schedule Configuration.....	76
6.15. Record Configuration.....	80
6.16. Port Status	81
Chapter 7. PLANET DDNS Application	82
7.1. Configure PLANET DDNS steps:.....	82
Chapter 8. Alarm I/O Connector	83
Chapter 9. PING IP Address.....	85
Chapter 10. Bandwidth Estimation	86
Chapter 11. Configure Port Forwarding Manually.....	87
Chapter 12. Power Line Frequency.....	91
Chapter 13. 3GPP	93
Chapter 14. Troubleshooting & Frequently Asked Questions	94

Chapter 1.

Product Introduction

1.1. Package Contents

The following items should be contained in the package:

- Video Server unit x 1
- Quick Installation Guide x 1
- Driver and User's Manual CD x 1
- A/V cable x 1
- Power Adapter x 1 (IVS-H125 only)
- Male to Male power line (IVS-H125P only)

-
- NOTE:**
1. *If any of the above items are missing, please contact your dealer immediately.*
 2. *Using the power supply that is not the one included in Internet Camera packet will cause damage and void the warranty for this product.*
-

1.2. Product Description

Efficiently Migrate Analog CCTV System to IP-based Security Solution

The one-channel PLANET IVS-H125 Internet Video Server and IVS-H125P PoE Internet Video Server offer the highly efficient H.264 video compression, which drastically reduces bandwidth and storage requirements without compromising image quality. It provides an easy and high quality solution for integrating small or large numbers of analog CCTV cameras into an IP-based video surveillance system. The IVS-H125 series are the ideal choice for casinos, airports, traffic surveillance and prisons — anywhere an analog surveillance system is already installed and full frame rate is needed.



Full frame rate in all resolutions

This video server supports H.264, MPEG-4, and JPEG compression formats and delivers excellent picture quality in 4CIF resolutions, at 30/25 (NTSC/PAL) frames per second (fps). It's also can deliver multiple, individually configurable video streams simultaneously at full frame rate in all resolutions. This means that several video streams can be configured with different compression formats, resolutions and frame rates for different needs.

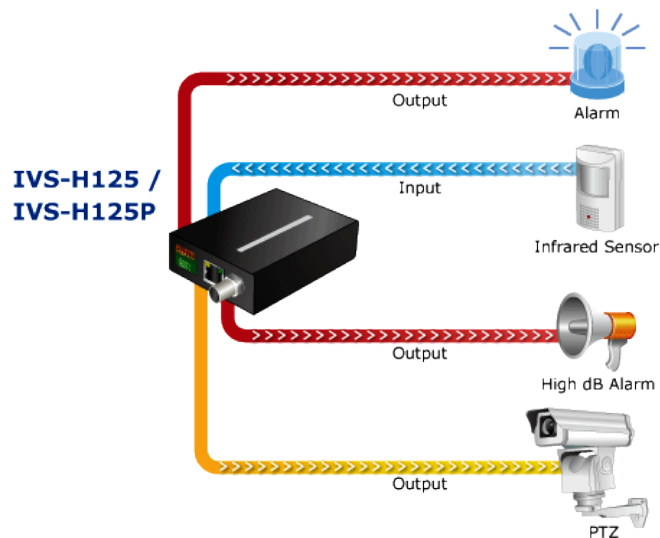


Advanced event management

The IVS-H125 series also support a number of advanced features that give the video server increased flexibility and capabilities, including AV out for perform the two-way audio function, micro SD/SDHC card slot for local storage, RS485 for connectivity to an optional pan/tilt enclosure which effectively adds pan/tilt functionality and inputs/outputs for connecting external devices such as door sensors and relays to activate light or close doors.

Digital I/O

For External Sensor in and Alarm out



Flexible installation and Optional installation with Media Converter Chassis (IVS-H125 only)

The IVS-H125 is ONVIF-compliant and therefore interoperable with other manufacturer's products, it's also included 64-CH central management software; the IVS-H125 is indisputably the top choice for reliable and high performance surveillance. The IVS-H125 also supports PLANET Media Converter Chassis, it can install maximum 15 IVS-H125 can be installed in the media converter chassis at one time. The power of IVS-H125 was supplied by the media converter chassis and can be centrally managed. It offers a flexible and scalable solution with media converter installation.



Flexible installation and Power functionality (IVS-H125P only)

The IVS-H125P incorporates Power over Ethernet supplies power to the camera via the network, eliminating the need for power cables and reducing installation costs. The IVS-H125P is ONVIF-compliant and therefore interoperable with other manufacturer's products, it's also included 64-CH central management software; the IVS-H125P is indisputably the top choice for reliable and high performance surveillance.

1.3. PRODUCT FEATURES

➤ **Video / Audio**

- H.264 / MPEG-4 and M-JPEG video compression simultaneously
- Simultaneous multi-stream support
- Up to 30/25 (NTSC/PAL) fps for all profiles
- 3DNR to improve picture quality at low Lux
- 2-Way audio support with enhanced audio quality

➤ **Network and Configuration**

- Auto MDI/MDI-X supported
- Compliant with IEEE 802.3af PoE interface for flexible deployment(IVS-H125P only)
- Supports IPv6 protocol in addition to the standard IP protocol version 4 (IPv4)
- RTSP / UPnP / 3GPP / HTTPS protocols selectable

➤ **Easy Installation & Management**

- ONVIF compliant for interoperability
- Built-in Samba client for NAS
- 3GPP for 3G mobile remote applications
- RS-485 interface for P/T scanner control
- Built-in micro SD/SDHC card slot for on-board storage
- Digital Input / Output for integration with sensors and alarms
- Cam Viewer 3 Central management software supported
- Optional installation with Media Converter Chassis (IVS-H125 only)

1.4. Product Specification

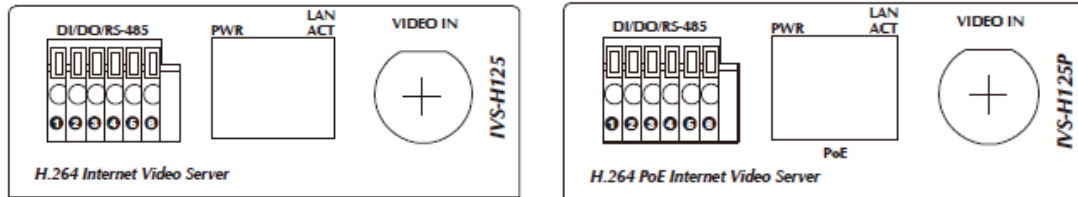
Model	IVS-H125	IVS-H125P
Image		
Video Compression	H.264 / MPEG-4 / M-JPEG	
Video Resolution	4CIF(D1), CIF, QCIF	
Frame Rate	30/25 (NTSC/PAL) fps in all resolutions	
Image Setting	AE, AWB 3D Noise reduction Color, brightness, sharpness, contrast Mirror / Flip 8 Privacy Masks Text, time and date overlay	
Streaming	Simultaneously multi-profile streaming Streaming over UDP, TCP, or HTTP HTTPS M-JPEG streaming over HTTP (server push) Supports 3GPP mobile surveillance (MPEG4) Controllable frame rate and bandwidth Constant and variable bit rate (MPEG4/H.264) ROI	
Audio		
Audio Streaming	Two-way Audio	
Audio Compression	RTSP: G.711 64kbps, G.726 32kbps 3GPP: AMR	
Microphone	External microphone input	
Audio Output	Adjustable audio output gain	
Network and Configuration		
Standard	IEEE 802.3 10Base-T IEEE 802.3u 100Base-TX	
Protocol	IPv4, IPv6, TCP/IP, UDP, HTTP, HTTPS, SMTP, FTP, NTP, DNS, DDNS, DHCP, ARP, Bonjour, UPnP, RTSP, RTP, RTCP, IGMP, PPPoE, 3GPP, ICMP, Samba	
Security	Password protection, IP address filtering, HTTPS encrypted data transmission, user access log	
Users	20 clients on-line monitoring at the same time	
System Integration		
Application Programming Interface	Open API for software integration ONVIF Compliant	
Alarm Triggers	Intelligent video motion detection, audio detection and external input	
Alarm Events	File upload via FTP, Samba to NAS, micro SD card or email Notification via email, HTTP, and TCP External output activation Audio alerting output Pre- and post-alarm buffering	
Environment Specifications		

Power Requirement	5V DC, 2A	IEEE 802.3af Class 3 Power Output: 12V DC, 0.4A
Power Consumption	4W (Max.)	
Operating Temperature	0 ~ 40 Degree C	
Operating Humidity	20 ~ 80% (non-condensing)	
Weight	215g	
Dimension (W x D x H)	94 x 70 x 26 mm	
Emission	CE, FCC	
Connectors	10/100Mbps Ethernet, RJ-45 BNC connector, 75 ohm impedance DC power jack Terminal block for 1 alarm input and 1 output RS-485 interface for pan/tilt scanners control External MIC input Composite video / audio output Micro SD/SDHC card (Max 32GB, Class 6) Factory default reset	

Chapter 2.

Hardware Interface

2.1. Left-hand side Panel



This IVS-H125 and IVS-H125P provide a general I/O terminal block with one digital input and one output for device control. It has 6 Pins that from left to right that are 12V DC power supply (50mA maximum), Alarm Input, GND, Alarm Output, D+ terminal of RS-485 and D- terminal of RS-485.

DI/DO/RS-485

Name	Number	Function
12VDC	1	DC 12V (50mA maximum)
DI	2	Digital signal input
GND	3	GND
DO	4	Digital signal output
485+	5	RS485 data +
485-	6	RS485 data -

NOTE: The RS-485 of IVS-H125 is master that can control external scanner or PTZ camera.

Connects to 10Base-T Ethernet or 100Base-TX Fast Ethernet cabling. This Ethernet port built N-Way protocol can detect or negotiate the transmission speed of the network automatically. Please use Category 5 cable to connect the Network Camera to a 100Mbps Fast Ethernet network switch or hub.

In the LAN socket, there are two LED embedded:

RJ-45

LAN LED (green color)

This LED will be flashing while network accessing via Ethernet.

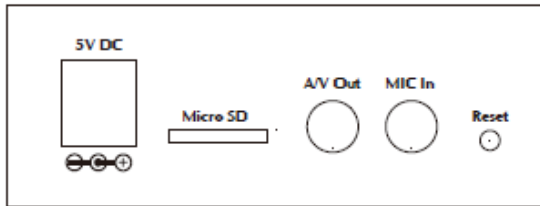
Power LED (orange color)

This LED is used to indicate whether DC power is on or not. In addition, this LED will be flashing while network accessing via Ethernet.

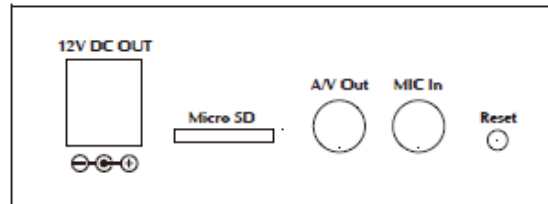
Video In

You can install an analog camera and connect it to video-in jack.

2.2. Right-hand side Panel



IVS-H125



IVS-H125P

<p>5V DC IN (IVS-H125 only)</p>	<p>The input power is 5V DC. Note: ONLY use package power adapter supplied with the product. Otherwise, the product may be damaged.</p>
<p>12V DC Out (IVS-H125P only)</p>	<p>The IVS-H125P provides 12V DC out through power jack to analog camera. The max output is DC 12V / 400mA.</p>
<p>A/V Out</p>	<p>Audio/Video-out Jack allows this device to output audio and video signal. Use the attached A/V cable to connect A/V device where white cable is for audio and yellow cable is for video. Note:</p> <ol style="list-style-type: none"> 1. The white jack is used for audio output, and yellow jack is used for video output. 2. The IVS-H125 and IVS-H125P could determine the monitor use NTSC or PAL format signal, and output the fitting video format to monitor automatically. Please connect the video jack (yellow) with monitor properly before power on the Video Server.
<p>MIC in</p>	<p>Connect an external microphone to the Video Server.</p>
<p>Reset</p>	<p>This button is hidden in the pinhole. This button is used to restore the all factory default settings. Sometimes restarting the Video Server will make the system back to a normal state. If the system still got problems after restart, user can restore the factory default settings and install it again. To restore the device, please follow the steps below:</p> <ol style="list-style-type: none"> a. Insert the paper clip or any proper tool and press and hold the button down continuously. b. Hold it at least 5 seconds and release the tool. Then the device has been restored to default settings and reboot again. <p>Note: Restoring the factory default setting will lose the all previous settings included IP address forever. User needs to run the PLANET IP Wizard II program to search the device and configure it to let the device work properly</p>

again.

Micro SD Card Slot User can insert a micro SD card into this slot for recording.

2.3. Hardware Installation

2.3.1 Stand-alone Installation

To install an IVS-H125 and IVS-H125P stand-alone, on a desktop or shelf, simply complete the following steps:

1. Attach video source to IVS-H125 / IVS-H125P

To use IVS-H125 and IVS-H125P, user must supply video source to IVS-H125 and IVS-H125P. Connect the BNC terminal of camera to the IVS-H125 and IVS-H125P's video input and make sure to power on camera first.

2. Plug-in Ethernet cable into RJ-45 connector

Connect an Ethernet cable to the LAN socket located on the IVS-H125 and IVS-H125P's panel and attach it to the network.

3. Check the LAN LED

The LED is defined to identify LAN connection type. When LAN port is connected, the LED will be green.

4. Connect RS-485 D+ and D- (option)

When users would like to apply a camera with P/T/Z function, they usually need to connect their communication port (for camera control) through RS-485. After RS-485 was correctly connected to D+ and D-, the remote users could control the camera movement through internet.

5. Attach Audio source to IVS-H125 / IVS-H125P (option)

If user needs not only video stream but also audio stream, then the audio source should be attached to IVS-H125 and IVS-H125P. Connect the audio device's line output to the IVS-H125 and IVS-H125P's MIC-in and make sure to power on your camera or audio device first.

6. Attach the power supply (IVS-H125 only)

Plug in power adapter and connect to power source. After power on, the Power LED (orange) will turn on later. Once the Power LED turned on, it means the system is booting up successfully. Furthermore, if you have a proper network connection, and access to the camera, the LAN LED will flash green.

NOTE: *Only use the power adapter supplied with Video Server. Otherwise, the product may be damaged.*

2.3.2 Chassis Installation and Rack Mounting (IVS-H125 only)

To install the Video Server in a 10-inch or 19-inch with standard rack, follow the instructions described below.

1. Place your IVS-H125 on a hard flat surface, with the front panel positioned towards your front side.
2. Carefully slide in the module until it is fully and firmly fitted into the slot of the chassis.



Figure 2-1: Insert a media converter into an available slot

3. Attach a rack-mount bracket to each side of the Chassis with supplied screws attached to the package.
4. After the brackets are attached to the chassis, use suitable screws to securely attach the brackets to the rack, as shown in Figure 2-2.
5. Precede with the steps 1~4 of session **2.3.1 Stand-alone Installation** to connect the network cabling and supply video source to Video Server.

Caution: You must use the screws supplied with the mounting brackets. Damage caused to the parts by using incorrect screws would invalidate your warranty.

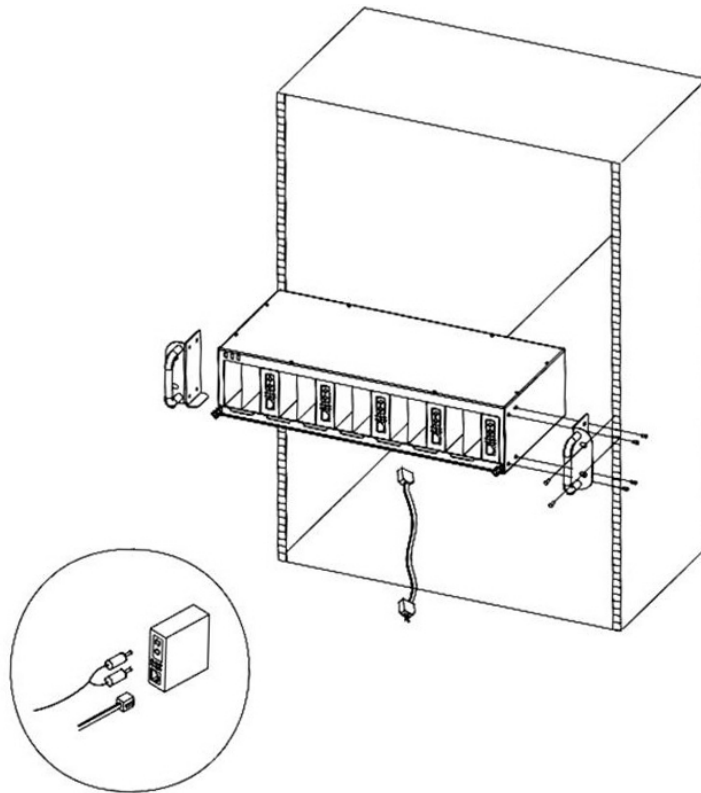
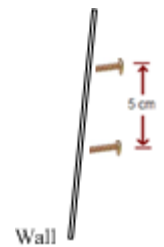


Figure 2-2 Mounting the Chassis in a Rack

2.3.3 Wall Mount Installation

There are two wall holes on the rear of IVS-H125 and IVS-H125P that allows the video server can be easily installed for wall mounting. To install the IVS-H125 and IVS-H125P on the wall, please follows the instructions described below.

1. To measure the holes spaces and screw the screws on the wall.
2. To hitch the IVS-H125 with screws to fix the video server on the wall.

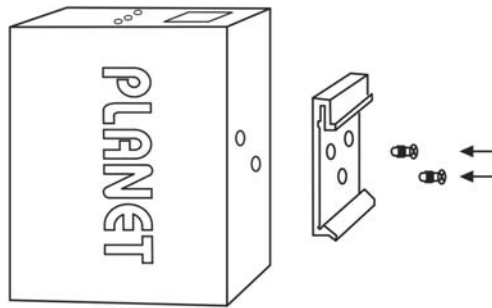


2.3.4 [Optional] - DIN-Rail Mount Installation

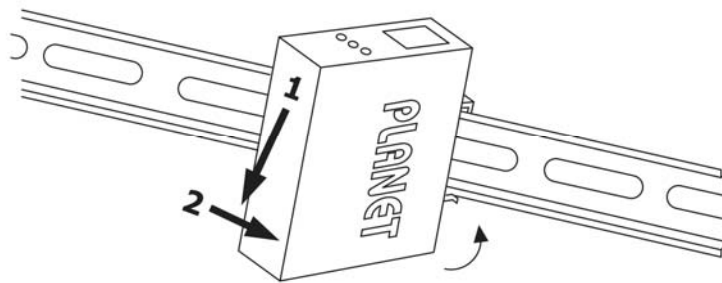
There are two DIN-Rail holes on the right and left sides of the IVS-H125 and IVS-H125P that allows the video server can be easily installed with DIN-Rail mounting. The PLANET optional DIN-Rail mounting Kit – RKE-DIN can be ordered separately. When need to replace the wall mount application with DIN-Rail application on the IVS-H125 and IVS-H125P, please refer to following figures to screw the DIN-Rail on the video server. To hang the IVS-H125 AND IVS-H125P, follow the below steps:



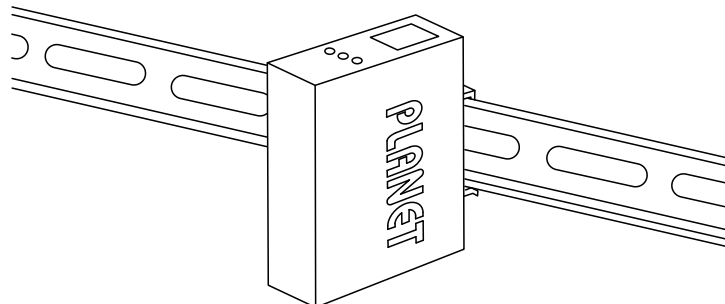
1. Screw the DIN-Rail on the IVS-H125 and IVS-H125P.



2. Lightly press the button of DIN-Rail into the track.



3. Check the DIN-Rail is tightly on the track.



Chapter 3.

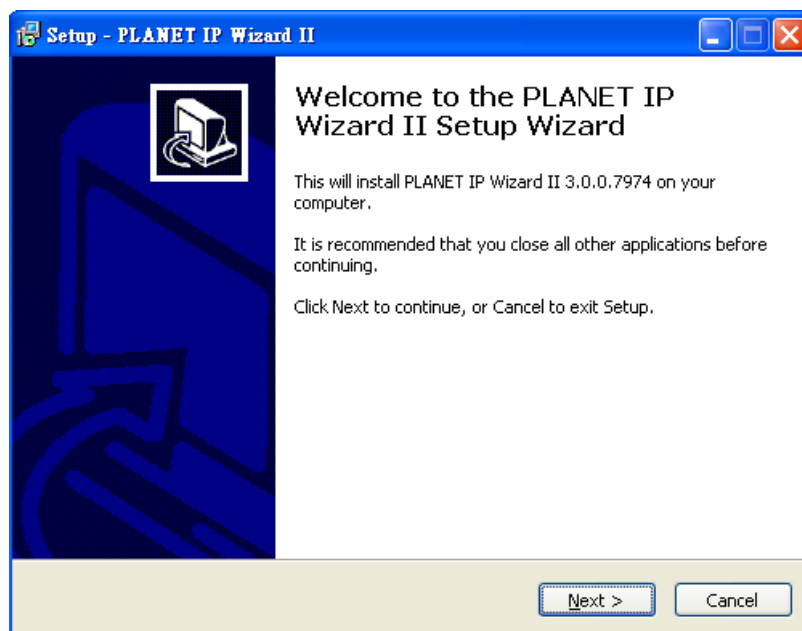
Initial Utility Installation

This chapter shows how to quick set up your H.264 Internet Video Server. The Internet Video Server is with the default settings. However to help you find the networked Internet Video Server quickly the windows utility PLANET IP Wizard II can search the Internet Video Server in the network that shall help you to configure some basic setting before you started advanced management and monitoring.

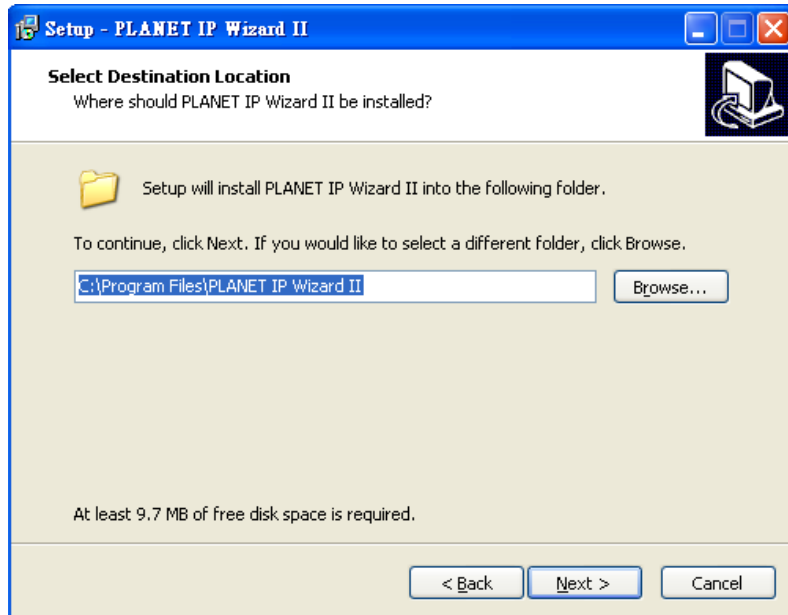
1. Insert the bundled CD into the CD-ROM drive to launch the auto-run program. Once completed, a welcome menu screen will appear.
2. Click the "IP Wizard II" hyperlink; you will see the dialog box as below.

NOTE: *If the welcome screen does not appear, click "Start" at the taskbar. Then, select "Run" and type "D:\Utility\IP Wizard II\setup.exe", assume D is your CD-ROM drive.*

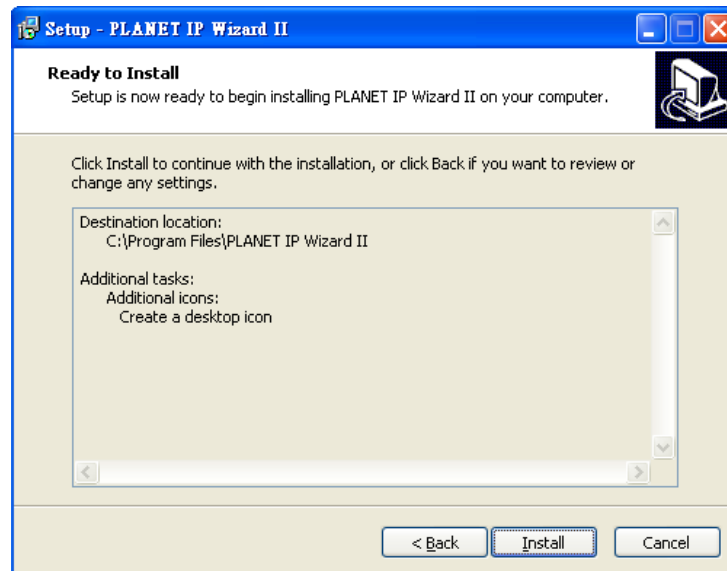
3. The "Welcome to the InstallShield Wizard for PLANET IP Wizard II" prompt will display on the screen and click "**Next**" to continue.



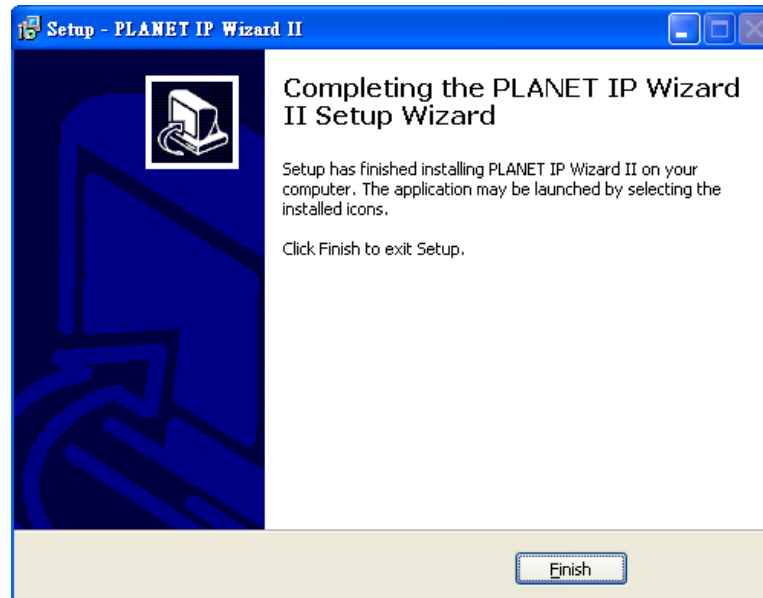
4. Please click "**Next**" to install with original settings, or you may click "**Change...**" button to modify the install folder then press "Next" to continue.



5. Please click **“Install”** to start the installation.

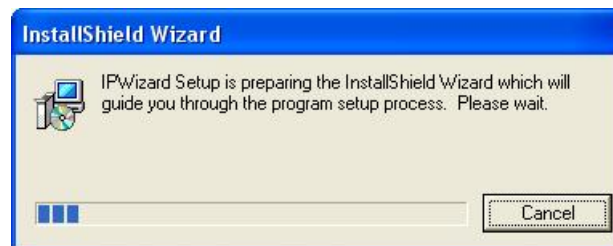


- Please click "**Finish**" to complete the installation and launch program immediately.

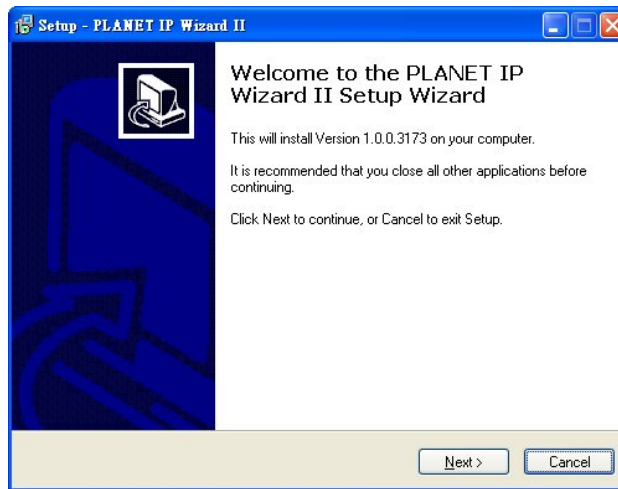


- Insert the bundled CD into the CD-ROM drive to launch the auto-run program. Once completed, a welcome menu screen will appear.
- Click the "IP Wizard II" hyperlink; you will see the dialog box as below.

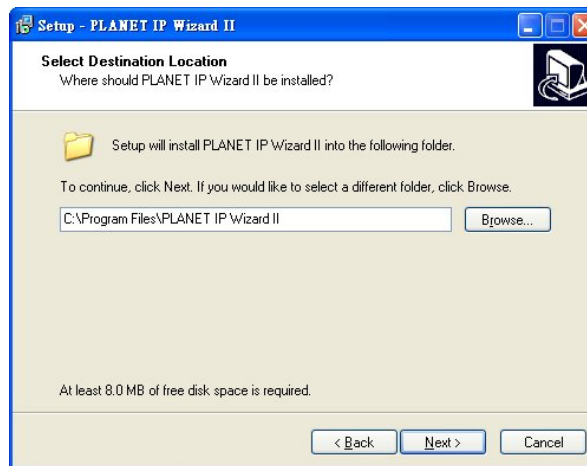
NOTE: If the welcome screen does not appear, click "Start" at the taskbar. Then, select "Run" and type "D:\Utility\IP Wizard II\setup.exe", assume D is your CD-ROM drive.



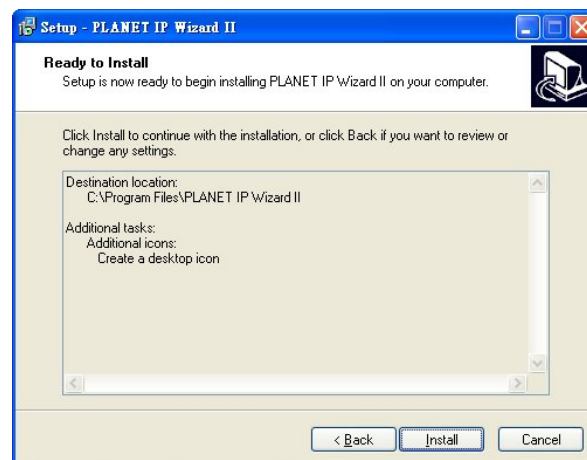
- The "Welcome to the InstallShield Wizard for PLANET IP Wizard II" prompt will display on the screen and click "**Next**" to continue.



10. Please click **Next** to install with original settings, or you may click **Change...** button to modify the install folder then press **Next** to continue.



11. Please click **Install** to start the installation.



12. Please click “**Finish**” to complete the installation and launch program immediately.



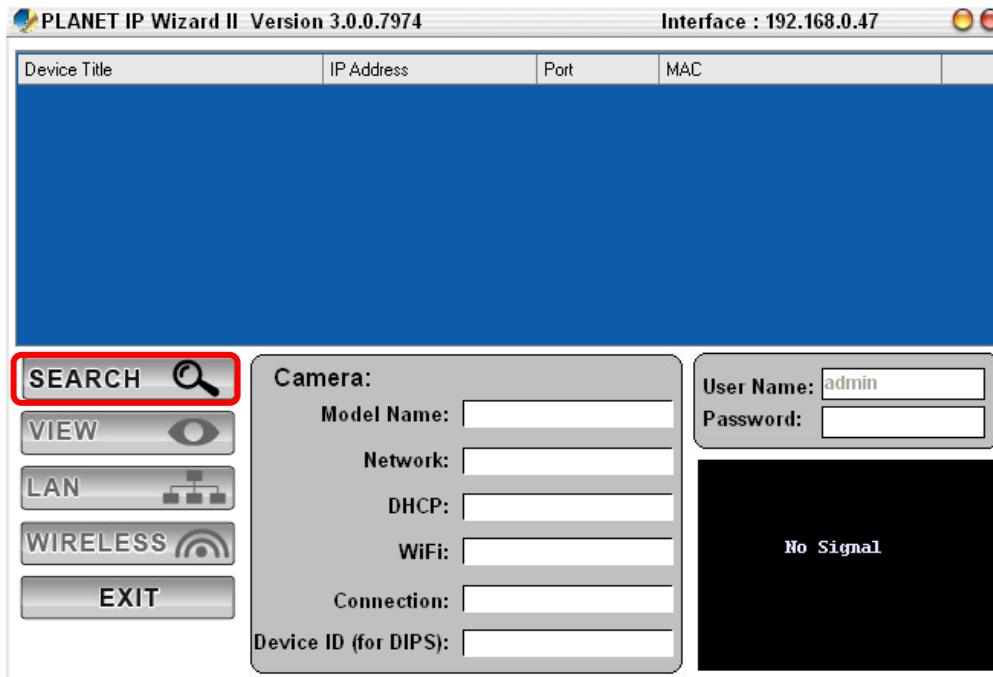
3.1. Preparation

When you installed the camera on a LAN environment, you may execute PLANET IP Wizard II to discover camera's IP address and set up related parameters in the camera.

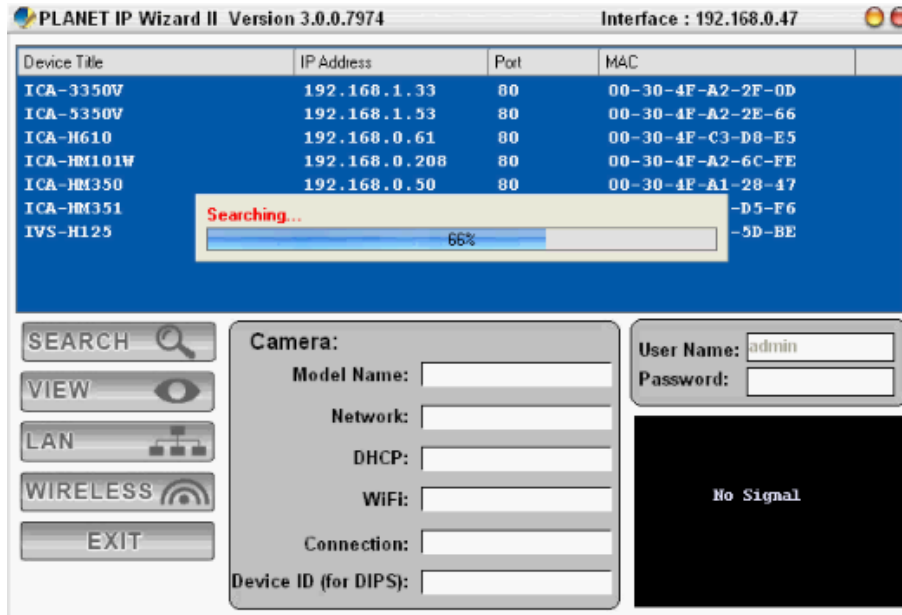
3.1.1. Search and View by PLANET IP Wizard II

When you installed the Camera on a LAN environment, you have two easy ways to search your Cameras by PLANET IP Wizard II or UPnP discovery. Here is the way to execute PLANET IP Wizard II to discover Camera's IP address and set up related parameter in a Camera.

✓ Search

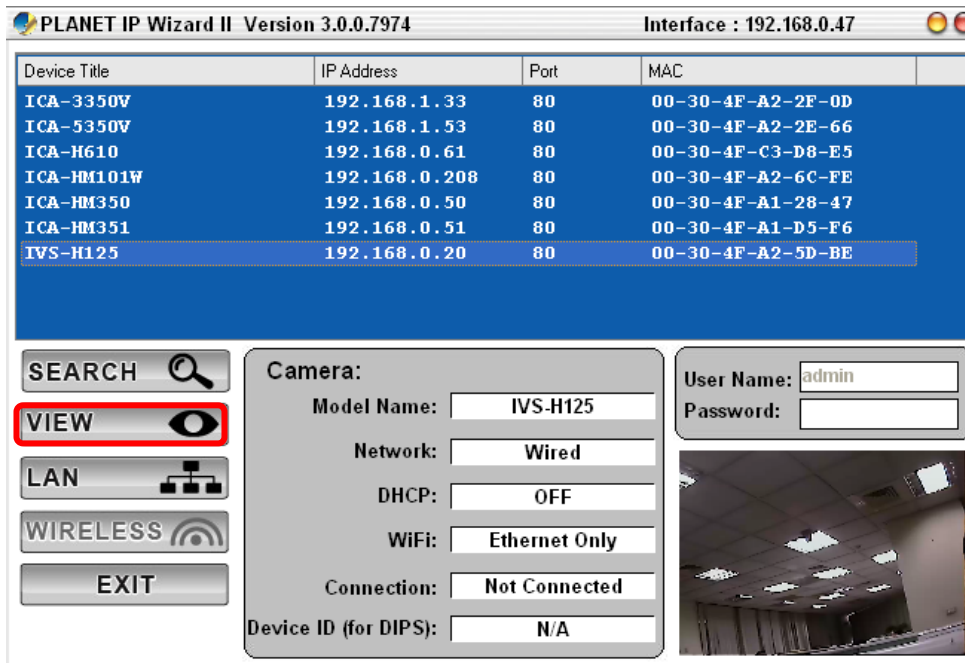


When launch the PLANET IP Wizard II, a searching window will pop up. PLANET IP Wizard II is starting to search Network Cameras on the LAN. The existed devices will be listed as below.

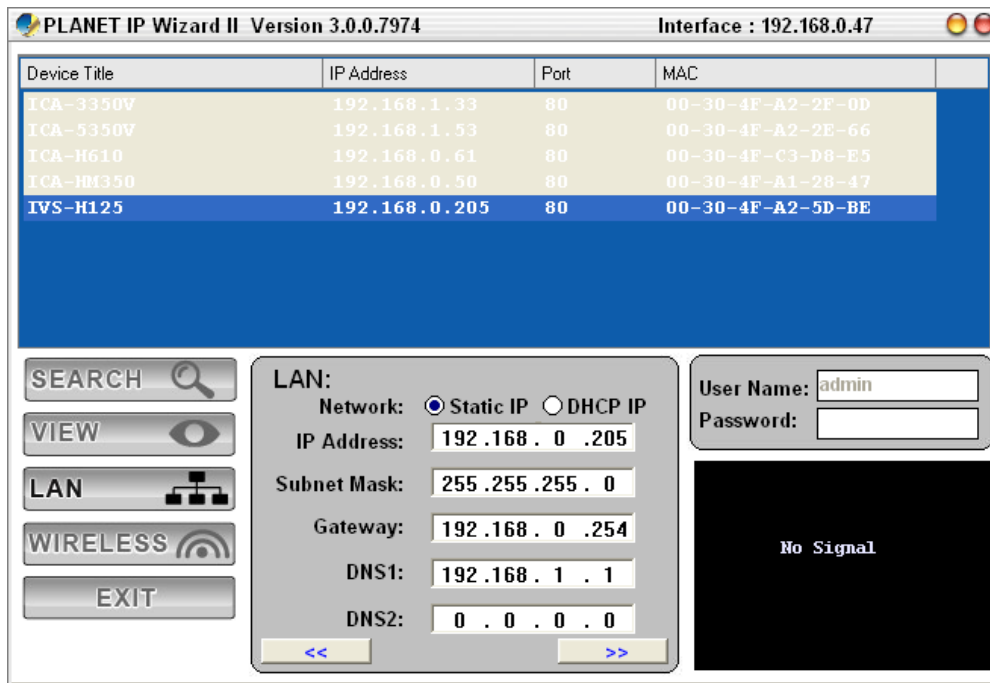


View

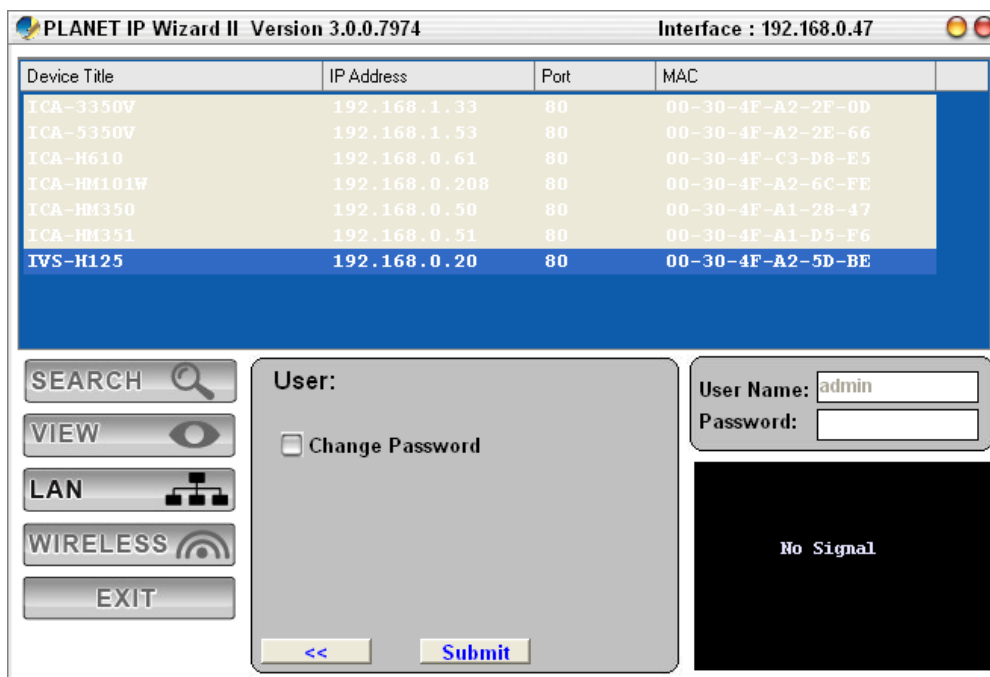
If PLANET IP Wizard II finds network devices, **View** button will be available. Please select the device you want to view and click the **View** button. Then you could see the video from camera directly. Furthermore you could double click the left button of mouse to link to the network device by browser.



In case you want to change the IP related parameters of wired interface, please select the device you want to configure and click the **LAN** button. Relative settings will be carried out as below.



In case, you do not want to change username and/or password, then just click "**Submit**" button to perform your setting accordingly. Click "<<" button will go back to previous page. If you like to change username and/or password of the device, just click the check button. Then, the related fields will show up as below.



After keying in new username and password, click "**Submit**" button to perform your setting

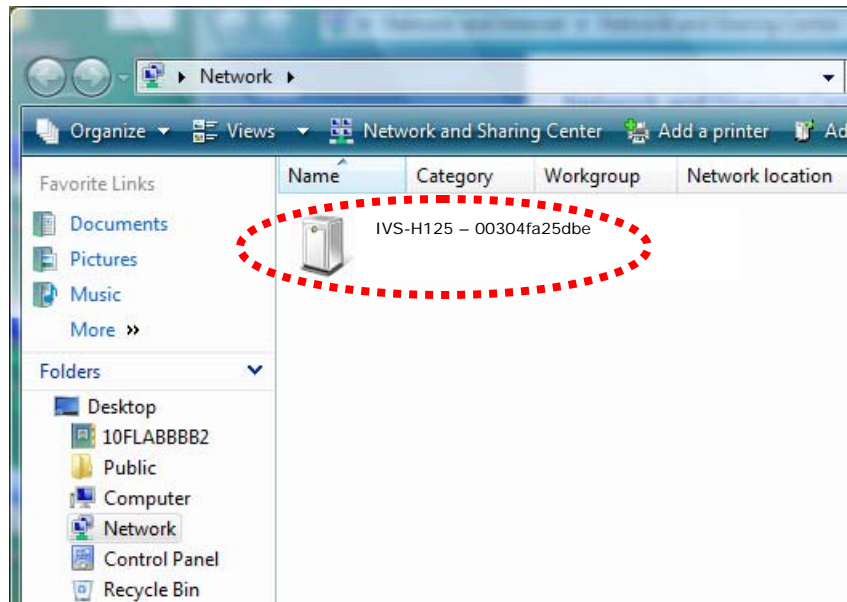
accordingly. Click “<<” button will go back to previous page. The default user name and password are both “admin”.

3.2. Using UPnP of Windows XP or Vista or Win7

UPnP™ is short for Universal Plug and Play, which is a networking architecture that provides compatibility among networking equipment, software, and peripherals. This device is an UPnP enabled device. If the operating system, Windows XP, of your PC is UPnP enabled, the device will be very easy to configure. Use the following steps to enable UPnP settings only if your operating system of PC is running Windows XP.

NOTE: Please notice that MS Windows 2000 does not support UPnP feature.

To discover your device, go to your Computer and click Network.



Chapter 4. Installation Guide

4.1. System Requirements

The Internet Camera can be monitoring on all of Windows operating system that suggest with system requirement below in order to got better video performance.

Network Interface	10/100Base-TX Ethernet
Monitoring System	Recommended for Internet Explorer 8.0 or later
System Hardware	<ul style="list-style-type: none">· CPU: Intel® Core™ i3 Processor or faster· Memory Size : 2GB or more· VGA card resolution : 1920 x 1080 or higher· VGA card memory : 1GB or above

-
- NOTE:**
1. *The listed information is minimum system requirements only. Actual requirement will vary depending on the nature of your environment.*
 2. *The IVS-H125 and IVS-H125P can be managed by PLANET IP Wizard II if you want to configure more detail information and settings of PLANET IP Wizard II software please refer to the CD-ROM folder "**D:\Utility\IP WizardII\setup.exe**", assume D is your CD-ROM drive.*
-

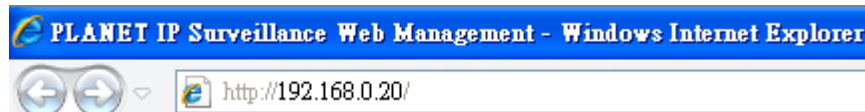
4.2. Before You Begin

The Internet Camera can be configured with your Web Browser. Before configure, please make sure your PC is under the same IP segment with Internet Camera.

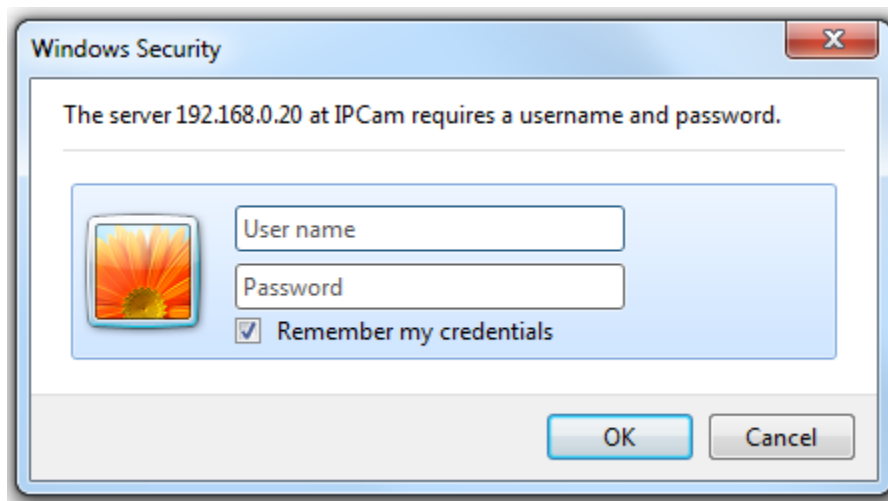
Connecting to Internet Camera

- Use the following procedure to establish a connection from your PC to the Internet Camera.
- Once connected, you can add the camera to your Browser's Favorites or Bookmarks.

Start the web browser on the computer and type the IP address of the camera.
The Default IP: "<http://192.168.0.20/>"

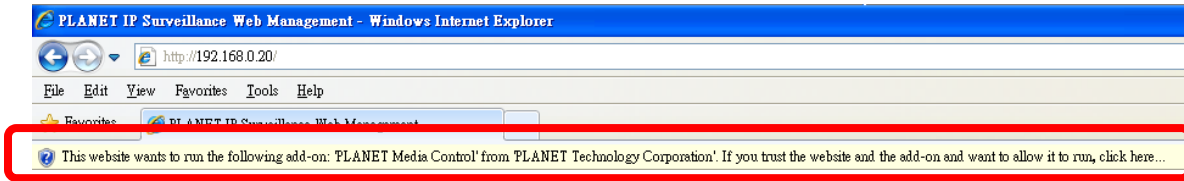


The login window of Internet Camera will appear,
Default login **username/password** is: **admin / admin**

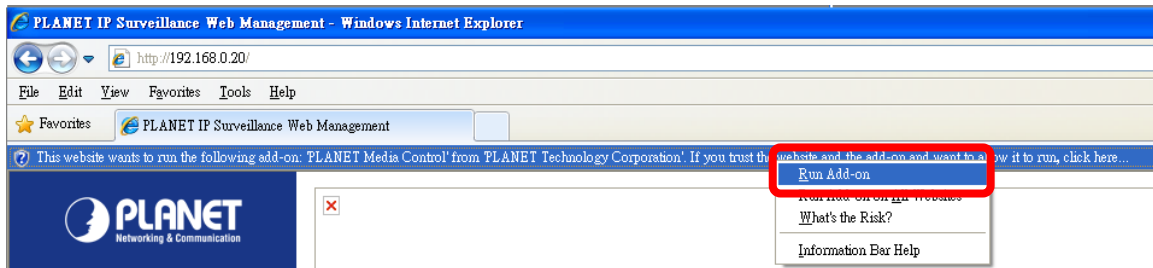


NOTE: *If the User name and Password have been changed with PLANET IP Wizard II, please enter the new User name and Password here.*

After logged on, you should see the following messages at the top of Internet Explorer:



Click on the message, and click **Run Add-on**



When you see this message, click **Run** to install required ActiveX control



After the ActiveX control was installed and run, the first image will be displayed.

You should be able to see the images captured from the Internet Camera in the web page now. For advanced functions, please refer to instructions given in follows chapters.

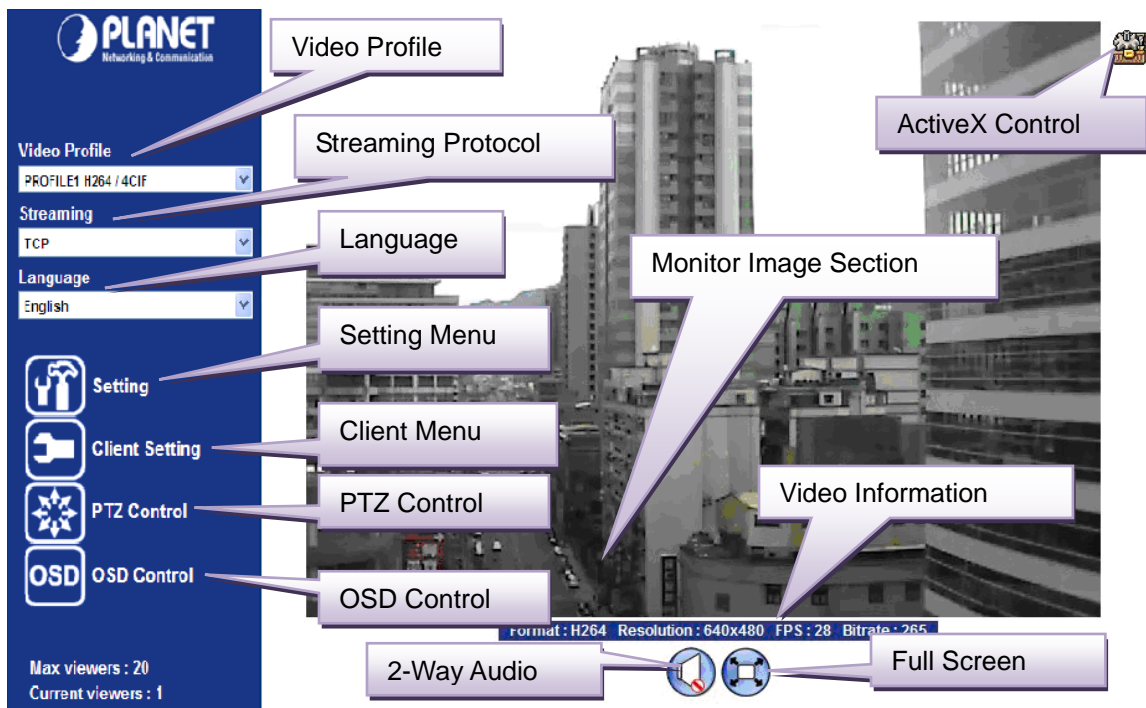
NOTE: *If you log in the camera as an ordinary user, setting function will be not available. you log in the camera as the administrator, you can perform all the settings provided within the device.*

Chapter 5.

Web Configuration for Live View

5.1. Live View

Start-up screen will be as follow no matter an ordinary users or an administrator.



<p>Monitor Image Section:</p>	<p>The image shot by the Video Server is shown here. The date and time are displayed at the top of the window.</p>
<p>Video Profile:</p>	<p>The Video Server support multi-profile for three compressions H264, MPEG-4 and M-JPEG simultaneously. User can chose the proper and/or preferred profile here.</p>
<p>Full Screen</p>	<p>Click this button to display the image in full-screen mode (uses every available space to display the image captured by this camera).</p>

2-Way Audio:

The Video Server supports 2-way audio function. User can chose to enable or disable this function by toggling the icon below



: Disable audio uploading function.



: Enable audio uploading function.

ActiveX Control:

The plug-in ActiveX control supports a lot of functions by clicking the left mouse button. Note that this feature only supports on the ActiveX control within Microsoft® Internet Explorer.

Setting Menu:

This function is detail setting for the camera that only available for user logged into camera as administrator.

Item	Action
Network	Configure Network settings such as IPv6, ONVIF, DHCP, DDNS, 3GPP, PPPoE and UPnP.
Camera	Adjust camera parameters.
System	Configure system information, date & time, maintenance, and view system log file.
Video	Configure bit rate and frame rate of video profiles.
Audio	Configure audio parameters.
User	Setup user name, password and login privilege.
E-Mail	Setup E-Mail configuration.
Object Detection	Setup Object detection.
Storage	Status and configuration of SD card and Samba server.
Continuous Recording	Files list inside the SD Card and Samba server.

Recording List	Files list inside the SD Card.
Event Server	Setup FTP/TCP/HTTP/Samba server for event
Event Schedule	Configure the schedule while event triggered.

Streaming Protocol: User can select proper streaming protocol according to networking environment.

Language: The device could provide multiple languages to meet customer's requirement.

Video Information: Display video information including video format, resolution, frame rate and bit rate.

Client Setting: Click this button to display the client extra control panel for 2-way Audio and Full Screen.

PTZ Control: Click to display the following control panel:

OSD Control: Choose the corresponding model for OSD control

5.2. ActiveX Control

The plug-in ActiveX control supports a lot of functions by clicking the left mouse button. Note that this feature only supports on the ActiveX control within Microsoft® Internet Explorer.

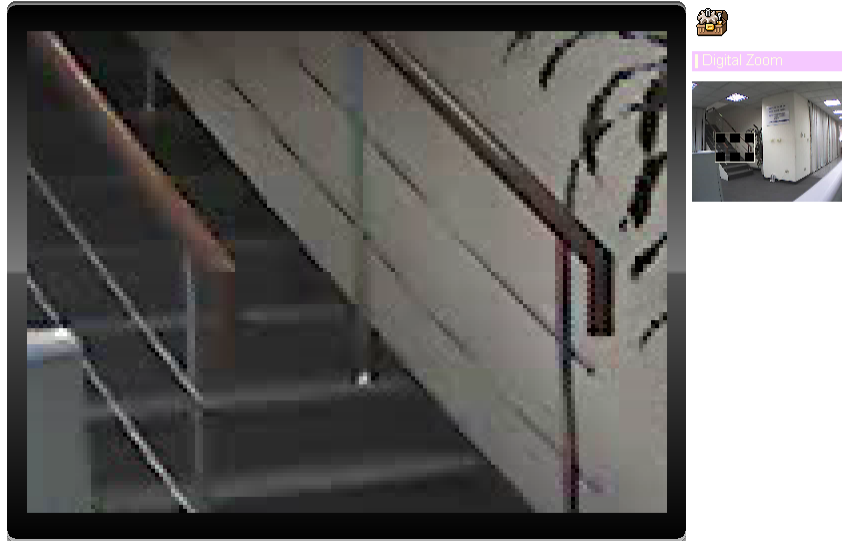
On the ActiveX control icon, click the Left Mouse Button, then a menu pop-up. This menu provides features that are unique to the ActiveX control. These features include:

- Digital Zoom,
- Snapshot,
- Record,
- Volume,
- About,



5.2.1. Digital Zoom

Click **Digital Zoom** to activate this function as above. User can drag or scale the box over the video to adjust zoom ratio and position.



5.2.2. Snapshot

Click **Snapshot** to activate this function. Press **Snapshot** button to take a picture. The image file is saved as JPEG format into your local PC. Select **Browser**, the pop-up window to select the save path and file name prefix, select **OK** to continue.

If you like to retrieve the saved image, select the file to display the saved image by using any one of graph editing tools.



5.2.3. Record

Click **Record** to activate this function. Press **Record** button to start recording. The video file is saved as ASF format into your local PC. While you want to stop it, press **Stop** to stop recording. Select **Browser**, the pop-up window to select the save path and file name prefix, select **OK** to continue.

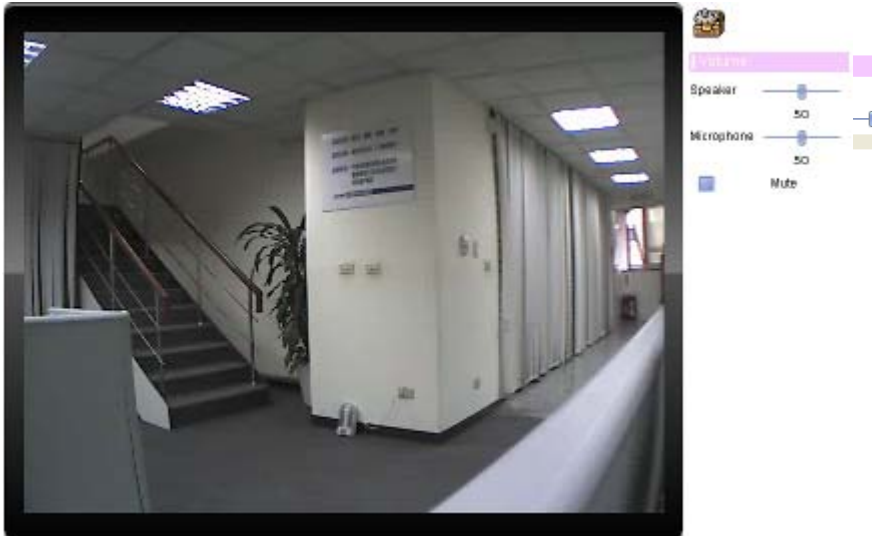
After stop recording, list the files, this file is named as Video_YYYYMMDDHHMMSS.asf

The ASF files can be display by the standard Windows Media Player, but it needs the DixectX 9.0 or later version to be installed.



5.2.4. Volume

Click Volume to activate this function. These have two control bars for speaker and microphone volume. Scroll this control bar to adjust the audio attribute. Check the volume mute will mute the speaker output.



5.2.5. About

Click **About** to show the ActiveX information



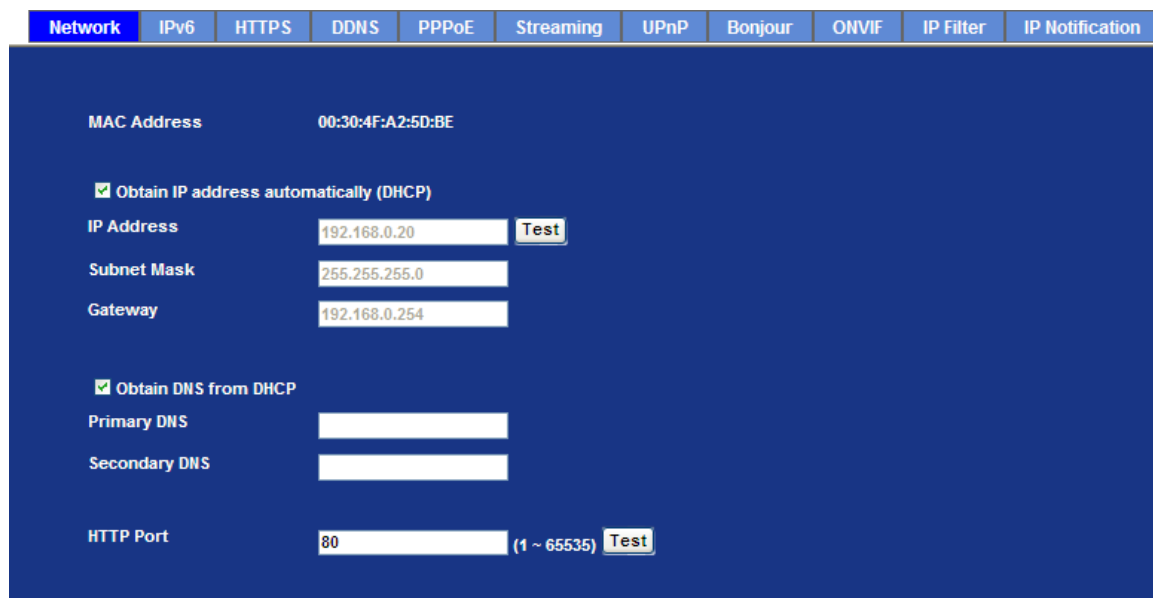
Chapter 6.

Configuration & Operation

6.1. Network Configuration

6.1.1 Network

This section provides the menu of connecting the device through Ethernet cable.



MAC address Display the Ethernet MAC address of the device. Note that user cannot change it.

Obtain an IP address automatically (DHCP) Enable this checked box when a DHCP server is installed on the network to issue IP address assignment. With this setting, the IP address is assigned automatically. If this device cannot get an IP address within limited tries, the device will assign a default IP address for 192.168.0.20.

If you do not select “Obtain an IP address automatically”, then you need to enter these network parameters by yourself.

IP Address This address is a unique numbers that identifies a computer or device on the WAN or LAN. These numbers are usually shown in groups

separated by periods, for example: 192.168.0.200

Subnet Mask

Subnets allow network traffic between hosts to be separated based on the network's configuration. In IP networking, traffic takes the form of packets. IP subnets advance network security and performance to some level by organizing hosts into logical groups. Subnet masks contain four bytes and usually appear in the same "dotted decimal" data. For example, a very common subnet mask in its binary demonstration 11111111 11111111 11111111 00000000 will usually be shown in the corresponding, more readable form as 255.255.255.0.

Gateway

A gateway is a piece of software or hardware that passes information between networks. You'll see this term most often when you either log in to an Internet site or when you're transient email between different servers.

Obtain DNS from DHCP

Enable this checked box when a DHCP server is installed on the network and provide DNS service.

Primary DNS

When you send email or position a browser to an Internet domain such as xxxxx.com, the domain name system translates the names into IP addresses. The term refers to two things: the conventions for naming hosts and the way the names are control across the Internet.

Secondary DNS

The same function as DNS1. It is option not necessary

HTTP Port

The device supports two HTTP ports. The first one is default port 80 and this port is fixed. This port is very useful for Intranet usage. The second HTTP port is changeable. Users could assign the second port number of http protocol, and the WAN users should follow the port number to login. If the http port is not assigned as 80, users have to add the port number in back of IP address. For example: <http://192.168.0.20:8080>.

Therefore, the user can access the device by either

<http://xx.xx.xx.xx/>, or

<http://xx.xx.xx.xx:xxxx/> to access the device.

If multiple devices are installed on the LAN and also required to be accessed from the WAN, then the **HTTP Port** can be assigned as the virtual server port mapping to support multiple devices.

NOTE

When the configuration is finish, please click "OK" to save and enable the setting.

6.1.2. IPv6 function

Internet Protocol version 6 (IPv6) is called the "IP Next Generation" (IPng), which is designed to fix the shortcomings of IPv4, such as data security and maximum number of user addresses. It is backward compatible and thus expected to slowly replace IPv4, with the two existing side by side for many years.



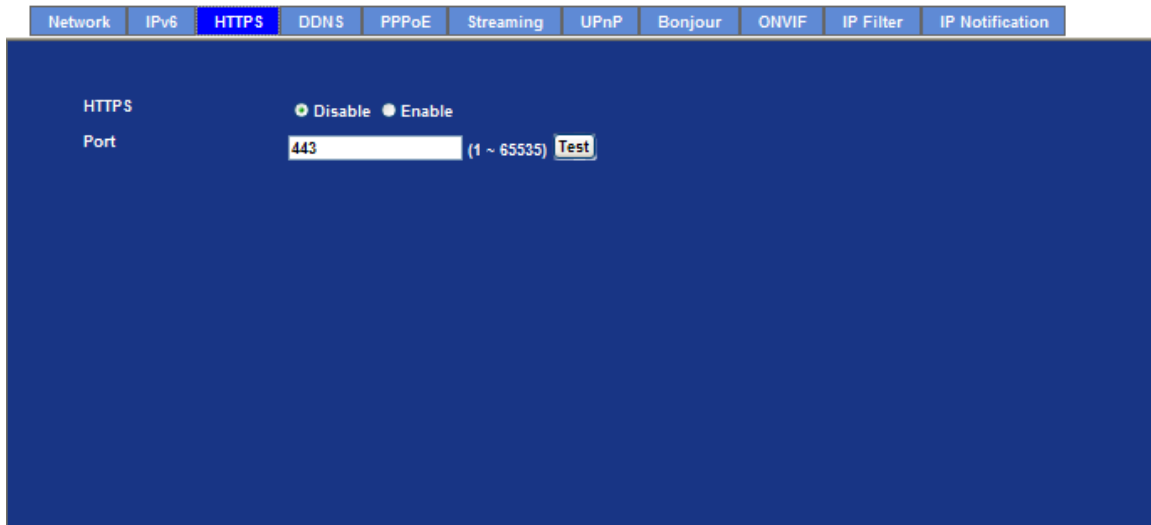
IPv6

To enable or disable the IPv6 function here.

6.1.3. HTTPS

HTTPS: Stands for Hypertext Transfer Protocol Secure

HTTPS is a combination of the Hypertext Transfer Protocol with the SSL/TLS protocol to provide encrypted communication and secure identification of a network web server. HTTPS connections are often used for sensitive transactions in corporate information systems. The main idea of HTTPS is to create a secure channel over an insecure network. This ensures reasonable protection from eavesdroppers and man-in-the-middle attacks, provided that adequate cipher suites are used and that the server certificate is verified and trusted.



HTTPS To enable or disable the HTTPS service here. Note that the HTTPS function of this device is not only encrypted the web content but also audio/video data.

Port Choose the HTTPS port. The default value is 443.

6.1.4. DDNS server

Stands for Dynamic Domain Name Server

The device supports DDNS. If your device is connected to xDSL directly, you might need this feature. However, if your device is behind a NAT router, you will not need to enable this feature. Because DDNS allows the device to use an easier way to remember naming format rather than an IP address. The name of the domain is like the name of a person, and the IP address is like his phone number. On the Internet we have IP numbers for each host (computer, server, router, and so on), and we replace these IP numbers to easy remember names, which are organized into the domain name. As to xDSL environment, most of the users will use dynamic IP addresses. If users want to set up a web or a FTP server, then the Dynamic Domain Name Server is necessary. For more DDNS configuration, please consult your dealer.

Your Internet Service Provider (ISP) provides you at least one IP address which you use to connect to the Internet. The address you get may be static, meaning it never changes, or dynamic, meaning it's likely to change periodically. Just how often it changes, depends on your ISP. A dynamic IP address complicates remote access since you may not know what your current WAN IP address is when you want to access your network over the Internet. The solution to the dynamic IP address problem comes in the form of a dynamic DNS service.

The Internet uses DNS servers to lookup domain names and translates them into IP addresses. Domain names are just easy to remember aliases for IP addresses. A dynamic DNS service is unique because it provides a means of updating your IP address so that your listing will remain current when your IP address changes. There are several excellent DDNS services available on the Internet and best of all they're free to use. One such service you can use is www.DynDNS.org. You'll need to register with the service and set up the domain name of your choice to begin using it. Please refer to the home page of the service for detailed instructions or refer to Appendix E for

more information.

Network	IPv6	HTTPS	DDNS	PPPoE	Streaming	UPnP	Bonjour	ONVIF	IP Filter	IP Notification
---------	------	-------	-------------	-------	-----------	------	---------	-------	-----------	-----------------

DDNS	<input checked="" type="radio"/> Disable <input type="radio"/> Enable
Server Name	PLANET DDNS ▾
DDNS Host	<input type="text"/> .planetddns.com (6 ~ 16 Digits)
User Name	<input type="text"/> (6~16 Digits)
Password	<input type="password"/> (6~16 Digits)
Internet Status	---

DDNS: To enable or disable the DDNS service here.

Server name: Choose the built-in DDNS server.

DDNS Host: The domain name is applied of this device.

User Name: The user name is used to log into DDNS.

Password: The password is used to log into DDNS.

6.1.5. PPPoE

PPPoE: Stands for Point to Point Protocol over Ethernet

A standard builds on Ethernet and Point-to-Point network protocol. It allows Internet camera connects to Internet with xDSL or cable connection; it can dial up your ISP and get a dynamic IP address. For more PPPoE and Internet configuration, please consult your ISP.

It can directly connect to the xDSL, however, it should be setup on a LAN environment to program the PPPoE information first, and then connect to the xDSL modem. Power on again, then the device will dial on to the ISP connect to the WAN through the xDSL modem.

The procedures are

- Connect to a LAN by DHCP or Fixed IP
- Access the device, enter **Setting** → **Network** → **PPPoE** as below



PPPoE: To enable or disable the PPPoE service here.

User Name: Type the user name for the PPPoE service which is provided by ISP.

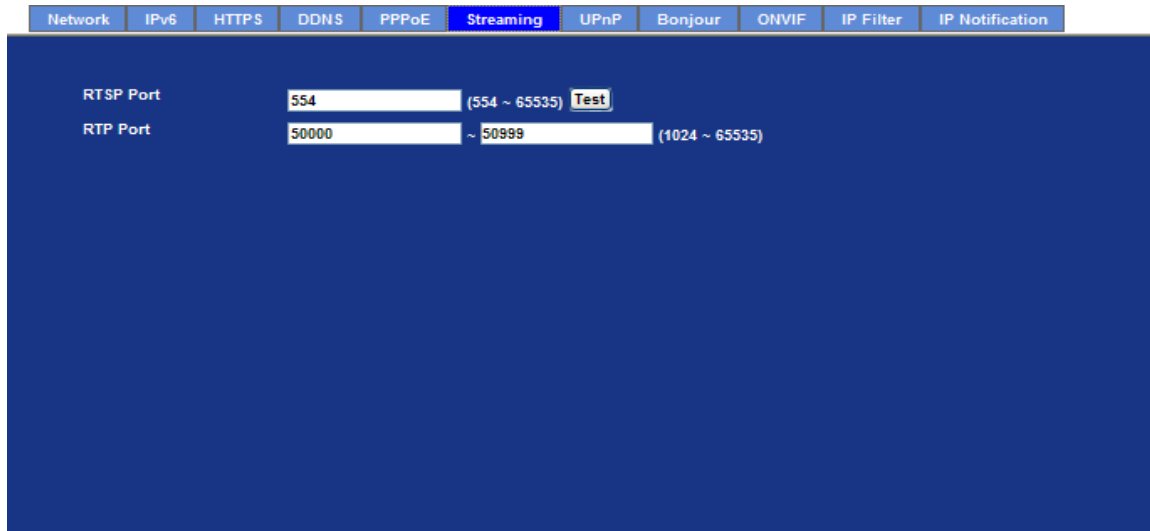
Password: Type the password for the PPPoE service which is provided by ISP.

IP Address / Subnet Mask / Gateway: Shows the IP information got from PPPoE server site.

Status: Shows the Status of PPPoE connection.

6.1.6. Streaming

RTSP is a streaming control protocol, and a starting point for negotiating transports such as RTP, multicast and Unicast, and for negotiating codecs. RTSP can be considered a "remote control" for controlling the media stream delivered by a media server. RTSP servers typically use RTP as the protocol for the actual transport of audio/video data.



RTSP Port: Choose the RTSP port. The RTSP protocol allows a connecting client to start a video stream. Enter the RTSP port number to use. The default value is 554.

RTP Port: Specify the range of transmission port number of video stream. The default range is 50000 to 50999. User can specify a number between 1024 and 65535.

- NOTE:**
1. To use the 3GPP function, in addition to previous section, you might need more information or configuration to make this function work.
 2. The Video Server must be set as Multi-profile mode, not Mega-pixel mode. Otherwise this device cannot serve 3GPP stream.
 3. To use the 3GPP function, it strongly recommends installing the Networked Device with a public and fixed IP address without any firewall protection.
 4. Port 554 is the default for RTSP service. However, sometimes, some service providers change this port number for some reasons. If so, user needs to change this port accordingly.

Dialing 1. Choose a verified player (PacketVideo, QuickTime or Real player)

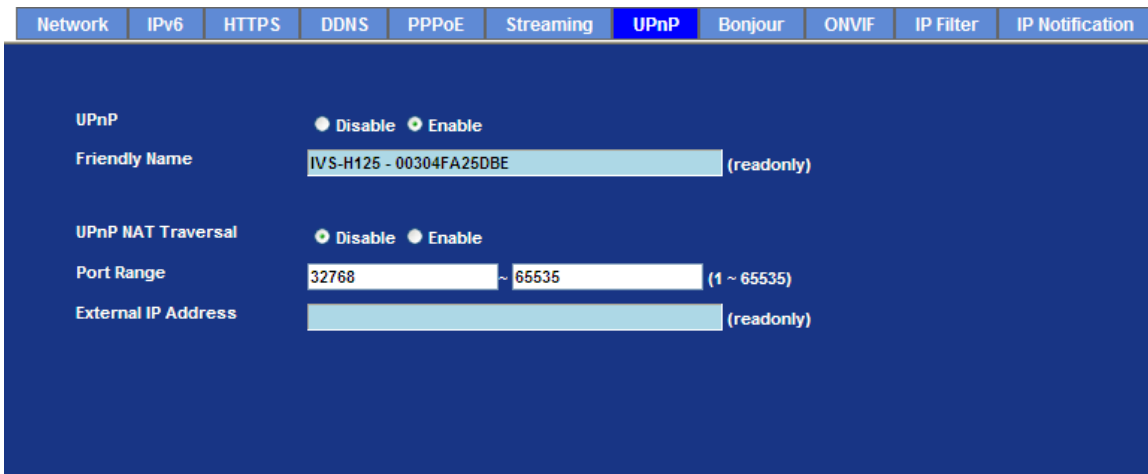
procedure: currently)
 2. Use the following URL to access: **rtsp://host/mpeg4/media.3gp**
 Where host is the host name or IP address of the camera.

Compatible 3G mobile phone: Please contact your dealer to get the approved list of compatible 3G phone.

6.1.7. UPnP

UPnP is short for Universal Plug and Play, which is a networking architecture that provides compatibility among networking equipment, software, and peripherals. This device is an UPnP enabled Network Video Server. If your operating system is UPnP enabled, the device will automatically be detected and a new icon will be added to "My Network Places." If you do not want to use the UPnP functionality, it can be disabled

In addition, this device also provides UPnP IGD function for NAT traversal easily. Use NAT traversal when your device is located on an intranet (LAN) and you wish to make it available from the other (WAN) side of a NAT router. With NAT traversal properly configured, all HTTP traffic to an external HTTP port in the NAT router will be forwarded to the device.



UPnP: To enable or disable the UPnP service here.

Friendly Name: Shows the friendly name of this device here.

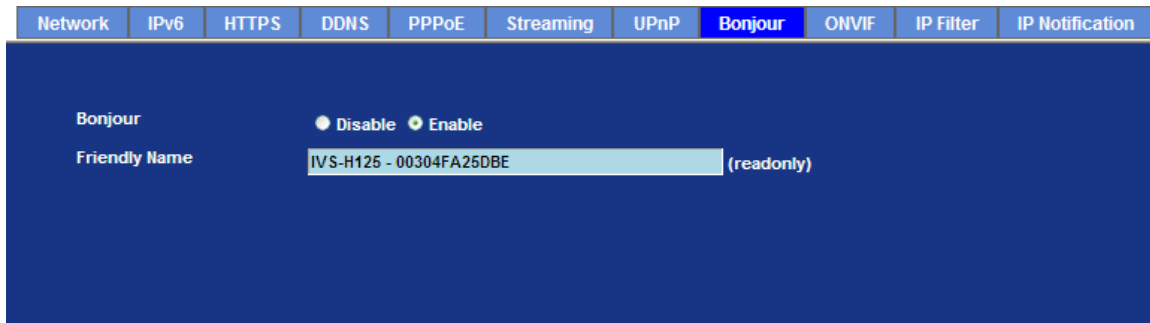
UPnP NAT Traversal: When enabled, the device will attempt to configure port mapping in a NAT router on your network, using UPnP™. Note that UPnP™ must be enabled in the NAT router first.

Port Range: The port range will open in NAT router.

External IP address: Show the IP address and port for WAN access through Internet. If NAT traversal is configured successfully, user can use this IP address and port to access this device.

6.1.8. Bonjour

The Bonjour service allows IP camera can be discovered with Apple Safari browser applied, once the option enable the IP camera will be show the Friendly Name in the Bonjour bookmarks menu of Safari browser.



Bonjour To enable or disable the Bonjour service here.

Friendly Name Shows the friendly name of this device here.

6.1.9. ONVIF

ONVIF is a global and open industry forum with the goal to facilitate the development and use of a global open standard for the interface of physical IP-based security products. Or in other words, to create a standard for how IP products within video surveillance and other physical security areas can communicate with each other.

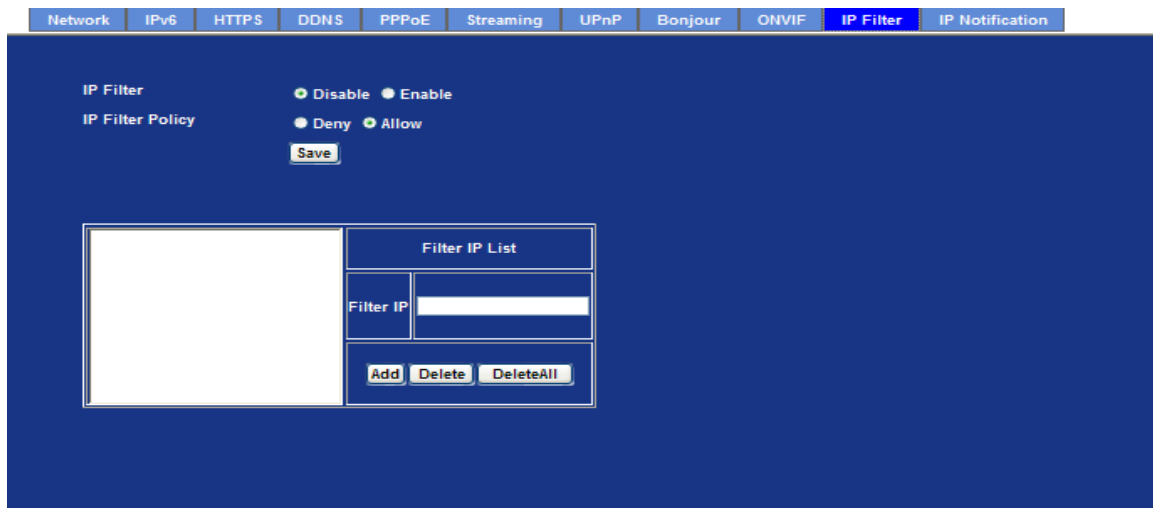


ONVIF To enable or disable the ONVIF interface here.

Version Currently, the V1.0 or V1.01/1.02/V2.0/V2.1.1 is available.

6.1.10. IP Filter

You can enter different user's IP address which are allowing enter or denying by the device.




IP Filter: To enable or disable the IP filter function here.

IP Filter Policy: Choose the filter policy where is denying or allowing.

6.1.11. IP Notification

In case the IP address is changed, system is able to send out an email to alert someone if the function is enabled.



Network	IPv6	HTTPS	DDNS	PPPoE	Streaming	UPnP	Bonjour	ONVIF	IP Filter	IP Notification
SMTP Notification(email) <input type="radio"/> Disable <input checked="" type="radio"/> Enable										
Send To <input type="text"/> (< 129 Digits)										
Subject <input type="text" value="IP notification"/> (< 65 Digits)										
TCP Notification <input type="radio"/> Disable <input checked="" type="radio"/> Enable										
TCP Server <input type="text"/> (< 65 Digits)										
TCP Port <input type="text"/> (1 ~ 65535)										
Message <input type="text"/> (< 65 Digits)										
HTTP Notification <input type="radio"/> Disable <input checked="" type="radio"/> Enable										
URL <input type="text" value="http://"/> (< 61 Digits)										
HTTP Login Name <input type="text"/> (< 22 Digits)										
HTTP Login Password <input type="text"/> (< 22 Digits)										
Proxy Address <input type="text"/> (< 129 Digits)										
Proxy Port <input type="text"/> (1 ~ 65535)										
Proxy Login Name <input type="text"/> (< 22 Digits)										
Proxy Login Password <input type="text"/> (< 22 Digits)										
Customer parameters <input type="text"/> (< 65 Digits)										
Message <input type="text"/> (< 65 Digits)										

SMTP Notification (e-mail):

If enable this function, then the “**Send to**“ and “**Subject**“ field need to be filled.

Send To:

Type the receiver’s e-mail address. This address is used for reply mail.

Subject:

Type the subject/title of the E-mail.

TCP Notification:

If enable this function, then the “**TCP Server**“, “**TCP Port**“, and “**Message**“ fields need to be filled.

TCP Server:

Type the server name or the IP address of the TCP server.

TCP Port:

Set port number of TCP server.

Message:

The message will be sent to FTP server.

HTTP Notification:

If enable this function, then the fields below need to be filled.

URL:	Type the server name or the IP address of the HTTP server
HTTP Login name:	Type the user name for the HTTP server.
HTTP Login Password:	Type the password for the HTTP server.
Proxy Address:	Type the server name or the IP address of the HTTP Proxy.
Proxy Port:	Set port number of Proxy.
Proxy Login name:	Type the user name for the HTTP Proxy.
Proxy Login Password:	Type the password for the HTTP Proxy.
Custom parameter:	User can set specific parameters to HTTP server.
Message:	The message will be sent to HTTP server.

6.2. Adjust Camera Configuration

Use this menu to set the function of the camera of Video Server

6.2.1. Picture



Color Level Large value will be colorful.

Brightness: Large value will brighten camera.

Contrast: Large value will contrast camera heavily.

Sharpness: Large value will sharpen camera.

Local Video Output: Enable or disable the local video output. It's useful for camera installation to check view angle and focus. However, it will save power and heat if disable this function. It will recommend user to disable this function once camera installed well.

3D De-Noise: De-Noise can remove or lower unwanted noise and preserve fine details and edges.

Video Input Offset: Use to adjust start point of captured video.

Default Settings: Restore to factory image settings.

6.2.2. PTZ Setting

Picture	PTZ Setting	Preset Setting	Tour Setting
Camera Protocol	Pelco-D		
Camera Address	1		
Baud rate	2400		
OSD Control	Default		
OSD Open	ff,id,00,07,00,5f,checksum		
OSD Close	ff,id,00,04,00,00,checksum ff,id,00,00,00,checksum		
OSD Select	ff,id,00,02,00,00,checksum ff,id,00,00,00,checksum		
OSD Back	ff,id,00,04,00,00,checksum ff,id,00,00,00,checksum		
OSD Up	ff,id,00,08,00,00,checksum ff,id,00,00,00,checksum		
OSD Down	ff,id,00,10,00,00,checksum ff,id,00,00,00,checksum		
OSD Left	ff,id,00,04,00,00,checksum ff,id,00,00,00,checksum		
OSD Right	ff,id,00,02,00,00,checksum ff,id,00,00,00,checksum		

This page allow user to modify the RS485 interface according to the P/T scanner.

Camera Protocol: This device can connect to a PTZ camera or speed dome camera and controls them thru RS485 interface.

Camera Address: This is the camera ID set in PTZ camera or speed dome camera.
Note that please DO NOT changes the default value if unnecessary. If so, user needs to check and set value properly for both sides.

Baud rate: This is the communication speed between network module and P/T scanner.

NOTE: If need to change these parameters, user needs to check and set value properly for both, network module and P/T scanner.

6.2.3. Preset Setting

This page provides the edit tool to modify or delete the "Preset Setting" item by item.

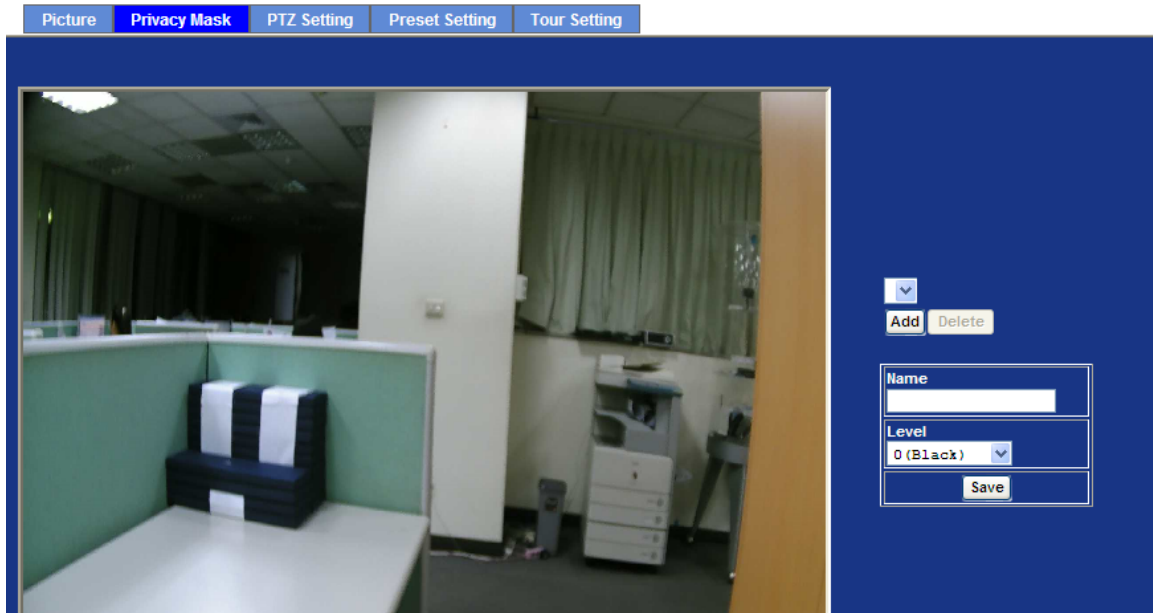
Picture PTZ Setting **Preset Setting** Tour Setting

Preset Number	Preset Name	Home Position

Preset List	
Preset Number	<input type="text"/>
Preset Name	<input type="text"/>
Home Position	<input type="radio"/> Enable <input checked="" type="radio"/> Disable
<input type="button" value="Modify"/> <input type="button" value="Delete"/>	

6.2.4. Privacy Mask

Use this page to specify privacy mask window 1 to window 8 and set the name and gray level for selected window.



Add and Delete To add or delete the privacy mask windows, user can specify up to 7 windows to mask the video captured by this device. By dragging mouse on the image, you can change the position and size of the selected window accordingly.

Name Name of the specified privacy window

Level To define the gray level of mask block. The smaller value will be darker.

6.2.5. PTZ Setting

This page allow user to modify the RS-485 interface according to the P/T scanner.

Picture	Privacy Mask	PTZ Setting	Preset Setting	Tour Setting
Camera Protocol		Pelco-D		
Camera Address		1		
Baud rate		9600		
OSD Control		Default		
OSD Open		ff,id,00,07,00,37,checksum		
OSD Close		ff,id,00,07,00,37,checksum		
OSD Select		ff,id,00,07,00,3d,checksum		
OSD Back		ff,id,00,07,00,3d,checksum		
OSD Up		ff,id,00,07,00,38,checksum		
OSD Down		ff,id,00,07,00,39,checksum		
OSD Left		ff,id,00,07,00,3a,checksum		
OSD Right		ff,id,00,07,00,3b,checksum		

Camera Protocol

This device can connect to a PTZ camera or speed dome camera and controls them thru RS-485 interface.

Camera Address

This is the camera ID set in PTZ camera or speed dome camera.

Note that please DO NOT changes the default value if unnecessary. If so, user needs to check and set value properly for both sides.

Baud rate

If need to change these parameters, user needs to check and set value properly for both, network module and P/T scanner.

Note that please DO NOT changes the default value if unnecessary. If so, user needs to check and set value properly for both sides.

OSD Control

Choose the corresponding model for OSD control

OSD Open

Control commands for Open function.

OSD Close

Control commands for Close function.

OSD Select

Control commands for Select function.

OSD Back	Control commands for Back function.
OSD Up	Control commands for Up function.
OSD Down	Control commands for Down function.
OSD Left	Control commands for Left function.
OSD Right	Control commands for Right function.

6.2.6. Preset Setting

This page provides the edit tool to modify or delete the "Preset Setting" item by item.

Picture Privacy Mask PTZ Setting **Preset Setting** Tour Setting

Preset Number	Preset Name	Home Position

Preset List	
Preset Number	<input type="text"/>
Preset Name	<input type="text"/>
Home Position	<input checked="" type="radio"/> Enable <input type="radio"/> Disable
<input type="button" value="Modify"/> <input type="button" value="Delete"/>	

6.2.7. Tour Setting

Up to 64 positions can be preset, and the camera can be programming to move to the preset position sequentially.

Picture Privacy Mask PTZ Setting Preset Setting **Tour Setting**

Tour Number	Tour Name	Running	Sequence	Preset Name	Wait Time

Tour Name	<input type="text"/>
Running	<input checked="" type="radio"/> Enable <input type="radio"/> Disable
<input type="button" value="Add"/> <input type="button" value="Modify"/> <input type="button" value="Delete"/>	

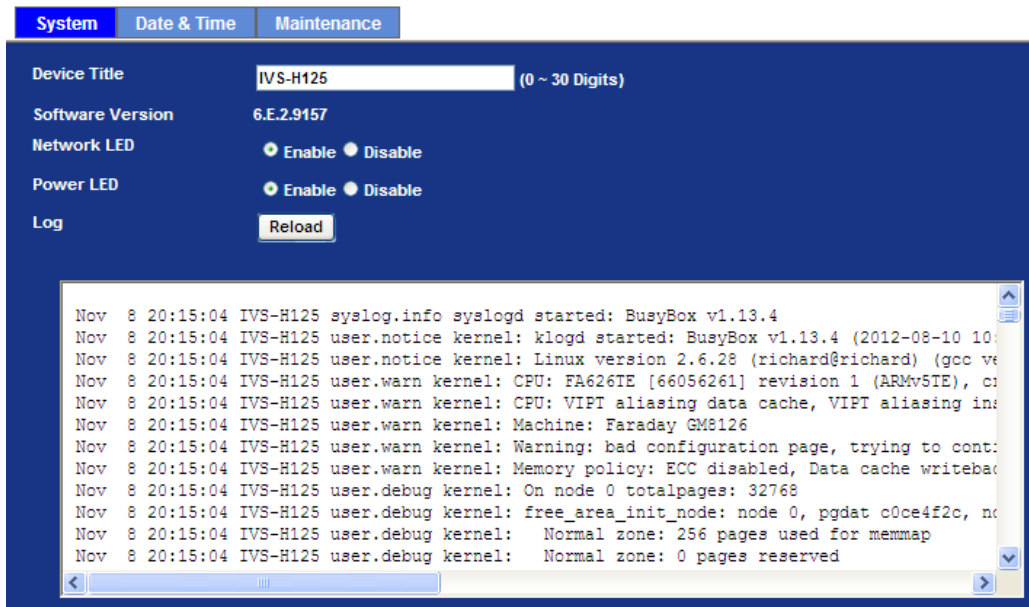
<input type="button" value="Modify"/>

Tour Name	The group name of the sequence of camera tour. The maximum number of camera tour is 16.
Running	Enable or disable this camera tour.
Preset	Set the sequence of the tour. Maximum 16 points can be assigned. The selected preset position is added in the Sequence list from 1 to 16.
Wait Time	Type a period of time during which the camera is to stay at each preset point, between 0 to 36000 seconds.
NOTE	To use the camera tour function, user must preset some camera positions first. The maximum number of preset points is 64.

6.3. System

Use this menu to perform the principal settings of Video Server.

6.3.1. System



Device title: You can enter the name of this unit here. It's very useful to identify the specific device from multiple units.

Software version: This information shows the software version in the device.

Network LED: Switch the LED light of this Internet camera on or off, that Network LEDs will stop working, in case you don't want other people know the camera is transferring data.

Power LED: Switch the LED light of this Internet camera on or off.

Log: User can check the system log information of the device, including the Main Info, Appended Info, Operator IP, and so on ...

Reload: Click this button; user can refresh the log information of the device.

6.3.2. Date & Time

User can setup the time setting of Video Server, make it synchronized with PC or remote NTP server. Also, you may select the correct time zone of your country.



System **Date & Time** Maintenance

Server Date & Time: 2012-9-05 15:41:45

PC Time: 2012-9-5 15:41:41

Adjust:

- Synchronize with PC
- Manual setting : Date : 2012 - Sep - 05 Time : 15 : 41 : 33
- Synchronize with NTP

NTP Server: time.stdtime.gov.tw

NTP Sync. Interval: 24 hour

Timezone: GMT (Dublin, Lisbon, London, Reykjavik)

Daylight Saving: Disable Enable

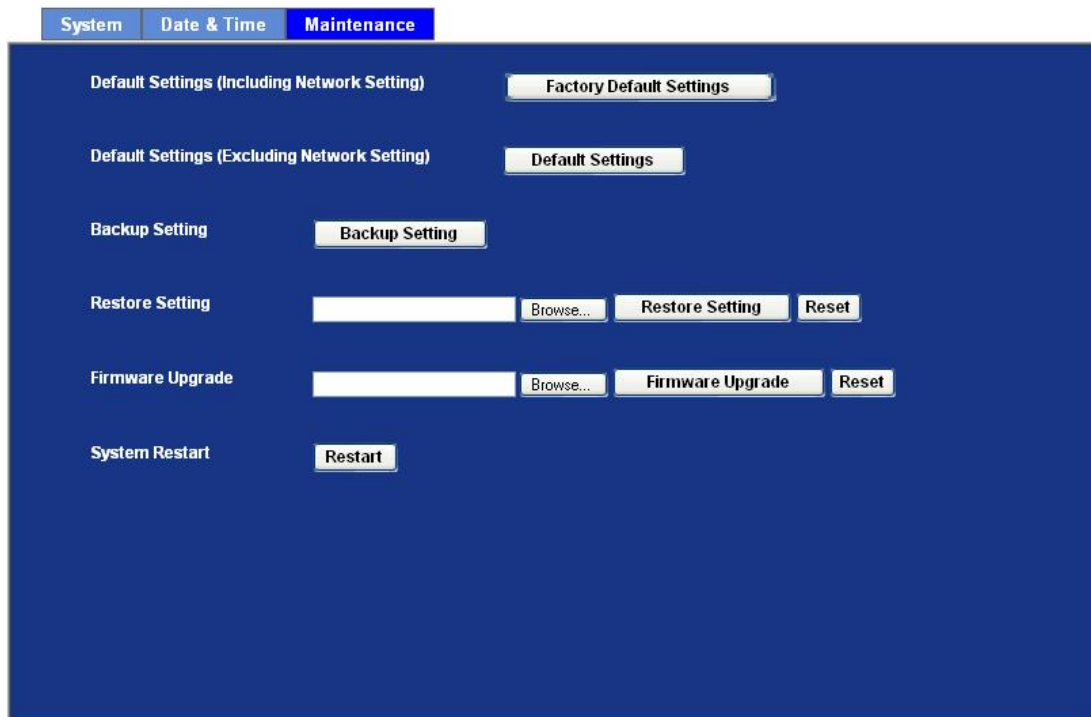
Daylight Saving StartTime: Jan 01 00:00:00

Daylight Saving StopTime: Jan 01 00:00:00

Daylight Saving Offset: + 01:00:00

Server Date & Time:	Displays the date and time of the device	
PC Time:	Displays the date and time of the connected PC	
Adjust:	Synchronize with PC:	Click this option to enable time synchronization with PC time
	Manual setting:	Click this option to set time and date manually
	Synchronize with NTP:	Click this option if you want to synchronize the device's date and time with those of time server called NTP server (Network Time Protocol)
NTP server name:	Type the host name or IP address or domain name of the NTP server.	
NTP sync. Interval:	Select an interval between 1 and 23 hours at which you want to adjust the device's time referring to NTP server	
Time zone:	Set the time difference from Greenwich Mean Time in the area where the device is installed.	
Daylight saving:	Check this item to enable daylight saving adjustment.	
Daylight Saving Start Time:	Sets up the date and time of daylight saving start time.	
Daylight Saving Stop Time:	Sets up the date and time of daylight saving stop time.	
Daylight Saving Offset:	Sets up the date of daylight saving offset.	

6.3.3. Maintenance



<p>Default Settings (Include the network setting):</p>	<p>Recall the device hard factory default settings. Note that click this button will reset all device's parameters to the factory settings (including the IP address).</p>
<p>Default Settings (Except the network setting):</p>	<p>The unit is restarted and most current settings are reset to factory default values. This action will not reset the network setting.</p>
<p>Backup Setting:</p>	<p>To take a backup of all of the parameters, click this button. If necessary, it will then be possible to return to the previous settings, if settings are changed and there is unexpected behavior.</p>
<p>Restore Setting:</p>	<p>Click the "Browse" button to locate the saved backup file and then click the "Restore Setting" button. The settings will be restored to the previous configuration.</p>
<p>Firmware upgrade:</p>	<p>The device supports new firmware upgrade.</p> <ol style="list-style-type: none"> 1. Close all other application programs which are not necessary for firmware update. 2. Make sure that only you access this device at this moment

3. Disable Motion Detection function.
4. Select "**Firmware name**"
5. Select the Firmware binary file.

Note: That it must make sure that the Firmware only applies to this device, once update, it will be burned into FLASH ROM of system.

6. Once the firmware file was selected, select "Upgrade".
7. The upgrade progress information will be displayed on the screen.
8. A message will be shown while the firmware upgraded. Once the upgrading process completed, the device will reboot the system automatically.
9. Please wait for 80 seconds, and then you can use PLANET IP Wizard II to search the device again.

Warning!!! The download firmware procedure cannot be interrupted. If the power and/or network connection are broken during the download procedure, it might possibly cause serious damage to the device.

Please be aware that you should not turn off the power during updating the firmware and wait for finish message.

Furthermore, do not try to upgrade new firmware if it's not necessary.

System Restart: The device is restarted without changing any of the settings.

6.4. Video

This device provides more video profiles as below to support different request to each client simultaneously. Each user can choose his preferred video profile as his request independently.

6.4.1. Common

Common	Video Profile	ROI
Text Overlay Setting		
Font Color	797979	Set Color Default Color
Background Color	101010	Set Color Default Color
Transparency	0 (opacity)	▼
<input type="checkbox"/> Include Date		
	<input checked="" type="radio"/> Predefined YYYY-MM-DD ▼	
	<input type="radio"/> Own %Y-%m-%d	(0 ~ 12 Digits)
<input type="checkbox"/> Include Time		
	<input checked="" type="radio"/> Predefined 24h ▼	
	<input type="radio"/> Own %H:%M:%S	(0 ~ 12 Digits)
<input type="checkbox"/> Include Text General Text ▼		
		(0 ~ 20 Digits)

Text Overlay Setting: There are some important information can be embedded into image, including date, time, and/or text.

6.4.2. Video Profile

There are H.264, MPEG4 and MJPEG encoder modes in this profile.

Common		Video Profile		ROI			
Name	Video Type	Resolution	Rate Control	Quality	Bitrate	Max Frame Rate	GOP
Profile1	h264	4cif	EVR	80	-	25	30
Profile2	mpeg4	4cif	EVR	80	-	25	30
Profile3	mjpeg	4cif	VBR	80	-	25	1
Profile4	h264	cif	EVR	80	-	25	30
Profile5	mpeg4	cif	EVR	80	-	25	30
Profile6	mjpeg	cif	VBR	80	-	25	1
Profile7	h264	qcif	EVR	80	-	25	30
Profile8	mpeg4	qcif	EVR	80	-	25	30
Profile9	mjpeg	qcif	VBR	80	-	25	1

Name	Profile1
Video Type	h264
Resolution	4cif
ROI	<input checked="" type="radio"/> Yes <input type="radio"/> No
Rate Control	EVR Quality 80 Max Bitrate 4000 K bps 384 ~ 4000
Max Frame Rate	25
GOP Control	30
Multicast	<input checked="" type="radio"/> Enable <input type="radio"/> Disable
Multicast Video	IP Address 239.198.97.181 Port 0 (0 means auto, 1024 ~ 65534)
Multicast Audio	IP Address 239.198.97.181 Port 0 (0 means auto, 1024 ~ 65534)

Name: To assign a name to the selected profile.

Video Type: There are three video types: H.264, MPEG4 and MJPEG.

Resolution: There are three resolutions in each profile: 4CIF, CIF and QCIF.

Rate Control: Defines the rate control method of this profile. There are two options: Constant Bit Rate (CBR) or Variable Bit Rate (VBR). For CBR, the video bit rate is between low to high bandwidth based on different resolutions. User can set the desired bit rate to match the limitation of bandwidth. For VBR, user should choose the quality level to set the video quality rather than bit rate. The quality level is between 1 and 100. The higher value can reach the better quality but of course will consume higher bandwidth.

Max Frame Rate: Defines the targeted frame rate of this profile. For example, set the frame rate to 15 fps, then the image will be updated for 15 frames per second. User can set the desired max frame rate

versus video quality under the limited bandwidth.

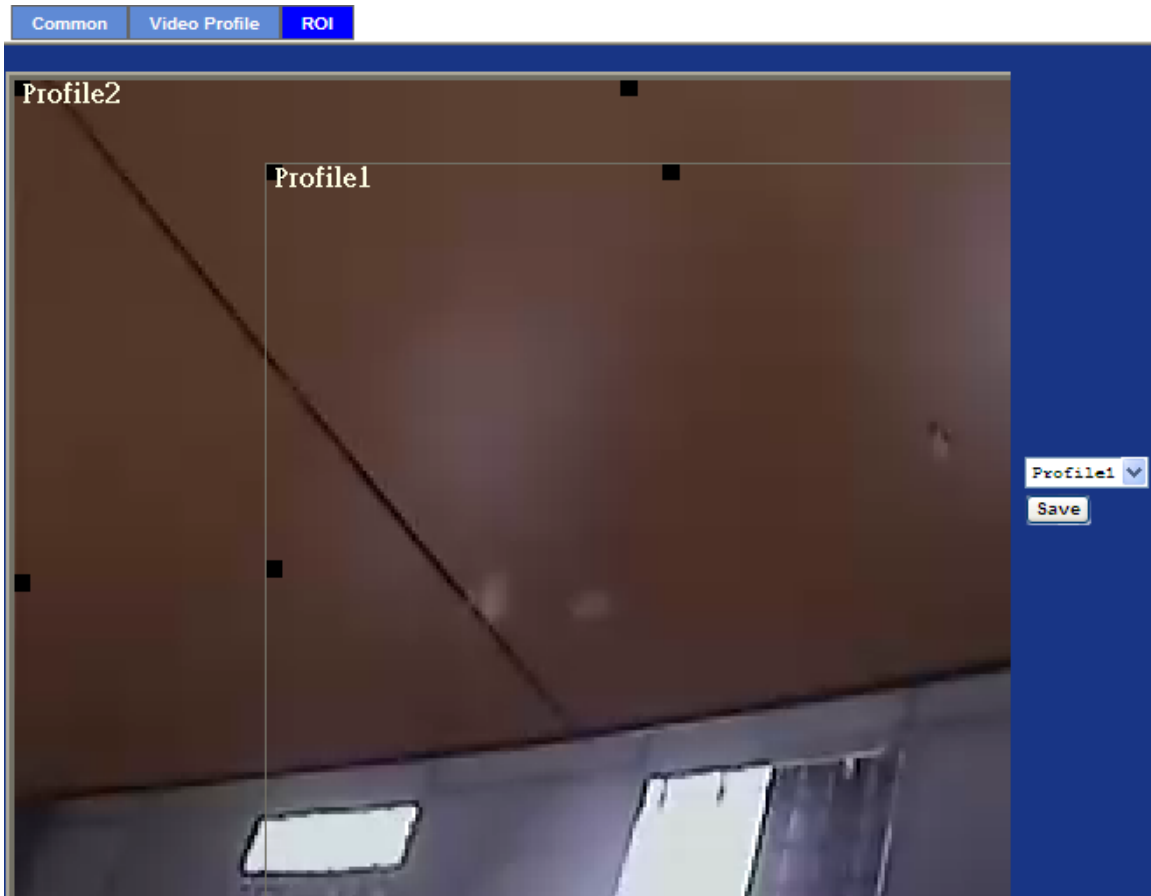
GOP Control:	Defines the Intra/Inter-frame (I/P) ratio of this profile. For example, set the GOP to 30, then the video stream will have one Intra-frame every 30 frames.
Multicast:	Enable or disable the multicast function.
Multicast Video:	IP address and port for multicast video streaming of the selected profile.
Time to live	Time to live (TTL) is a mechanism that limits the lifespan of data in a computer or network. Once the prescribed event count or timespan has elapsed, data is discarded. TTL prevents a data packet from circulating indefinitely.
Always Enable Multicast	Multicast streaming is always enabled or by request.

Warning!!!

To enable the multicast streaming, you shall make sure your Intranet does support multicast function. Otherwise, your Intranet may occur network storm seriously.

6.4.3. ROI

ROI means Region of Interest. Use this page to specify location of ROI windows. Only the maximum resolution profiles can be defined as ROI. In this model, the default ROI windows are profile 1 and 2.



6.5. Audio Configuration



Audio	To enable or disable audio function.
Audio type	To select G711 or G726 for <i>audio</i> coding.
Audio Mode	To select Simplex or Full duplex (2-way audio) mode.
Input Gain	To adjust gain of input audio.
Output Gain	To adjust gain of output audio.

6.6. User Privilege Access Configuration

Use this menu to set the user names and password of the Administrator and up to 10 users, and access right of each user.

Setting

Viewer Login Anonymous Only users in database **Save**

User Name	Access Right	PTZ Control
admin	administrator	yes

User List	
User Name	<input type="text"/> (1 ~ 20 Digits)
Password	<input type="text"/> (0 ~ 20 Digits)
Verify Password	<input type="text"/> (0 ~ 20 Digits)
Access Right	<input type="radio"/> Administrator <input checked="" type="radio"/> Viewer
PTZ Control	<input type="radio"/> Enable <input checked="" type="radio"/> Disable
<input type="button" value="Add"/> <input type="button" value="Modify"/> <input type="button" value="Delete"/>	

Viewer Login: Select "Anonymous" to allow any one viewing the video once connected. Otherwise, only users in database can view the video after login.

Access Right: Administrator can access every function in this device. However, Viewers only can view the video and access limited function.

PTZ Control Authorize this user to control PTZ function or not.

Add, update, and remove of Users account: Manage the user's account of viewer user.

6.7. E-Mail Configuration

You may setup SMTP mail parameters for further operation of Event Schedule. That's, if users want to send the alarm message out, it will need to configure parameters here and also add at least one event schedule to enable event triggering.

Setting

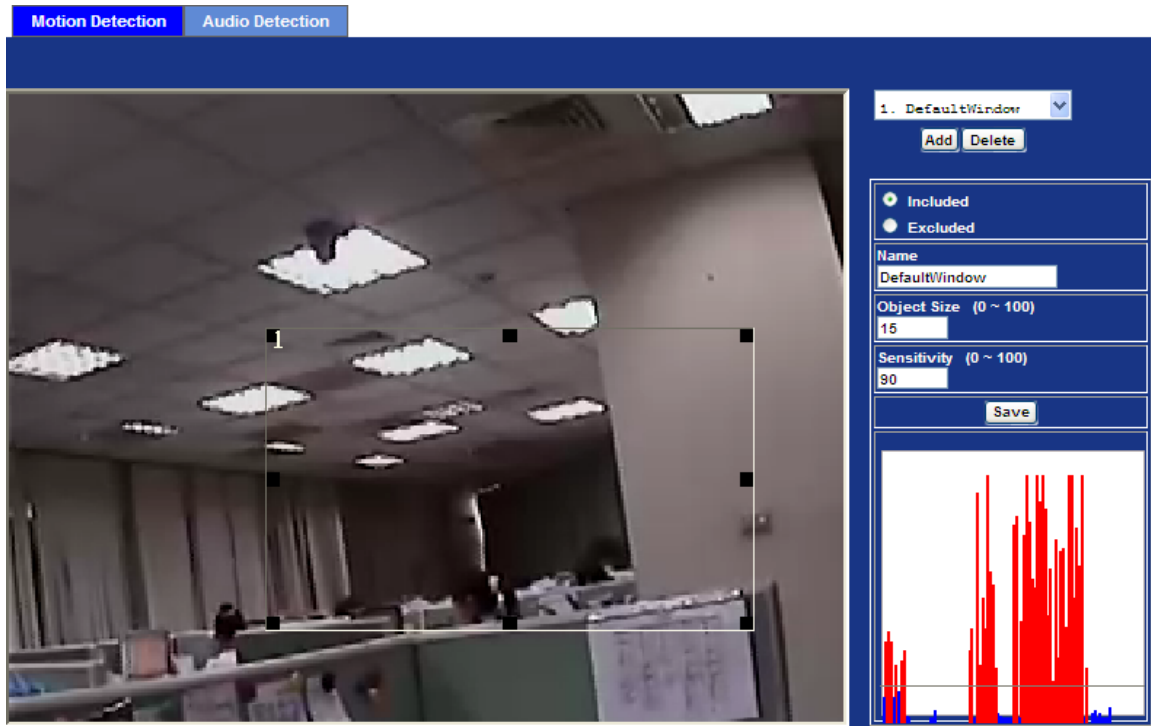
SMTP Server	mail.planet.com.tw (< 129 Digits)	<input type="button" value="Test"/>
SMTP Port	25 (1 ~ 65535)	
SSL	<input checked="" type="radio"/> Disable <input type="radio"/> Enable	
SMTP Authentication	<input type="radio"/> Disable <input checked="" type="radio"/> Enable	
Authentication User Name	admin (< 65 Digits)	
Authentication Password	***** (< 22 Digits)	
E-mail From	admin@planet.com.tw (< 129 Digits)	
E-mail To	support@planet.com.tw (< 129 Digits)	
E-mail Subject	message (< 65 Digits)	

SMTP Server	Type the SMTP server name or the IP address of the SMTP server.
Test	Send a test mail to mail server to check this account is available or not.
SMTP Port	Set port number of SMTP service.
SSL	Enable SSL function or not.
SMTP Authentication	Select the authentication required when you send an e-mail. Disable: If no authentication is required when an e-mail is send. Enable: If authentication is required when an e-mail is sent.
Authentication User Name	Type the user name for the SMTP server if Authentication is Enable.
Authentication Password	Type the password for the SMTP server if Authentication is Enable.
E-mail From	Type the sender's E-mail address. This address is used for reply e-mails.
E-mail To	Type the receiver's e-mail address.

E-mail Subject Type the subject/title of the e-mail.

6.8. Object Detection

Use this menu to specify motion detection window 1 to window 10 and set the conditions for detection while observing a captured image.



Add and Del: To add or delete the motion windows. User can specify up to 10 Included and/or Excluded windows to monitor the video captured by this device. By dragging mouse on the image, you can change the position and size of the selected motion window accordingly.

Included or Excluded Window: These windows can be specified as Included or Excluded type.
Included:
 Windows target specific areas within the whole video image
Excluded:
 Windows define areas within an Include window that should be ignored (areas outside Include windows are automatically ignored)

Name: Name of the specified motion window.

Object Size: Defines the object size of motion detection. The higher object size will only larger objects trigger motion detection. The lower object size will

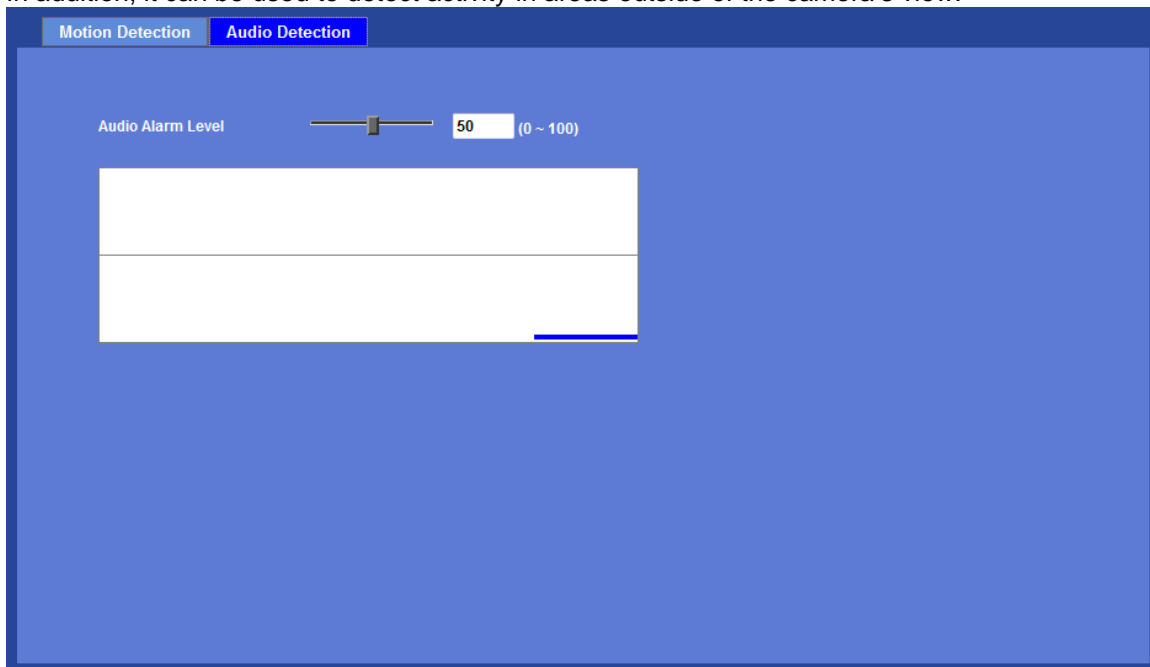
even small objects trigger motion detection too. Generally speaking, the smaller size will be easier to trigger event.

Sensitivity

Defines the sensitivity value of motion detection. The higher value will be more sensitivity.

6.9. Audio Detection

Audio detection alarm can be used as a complement to motion detection. Since audio detection can react to events in areas too dark for the video motion detection functionality to work properly. In addition, it can be used to detect activity in areas outside of the camera's view.



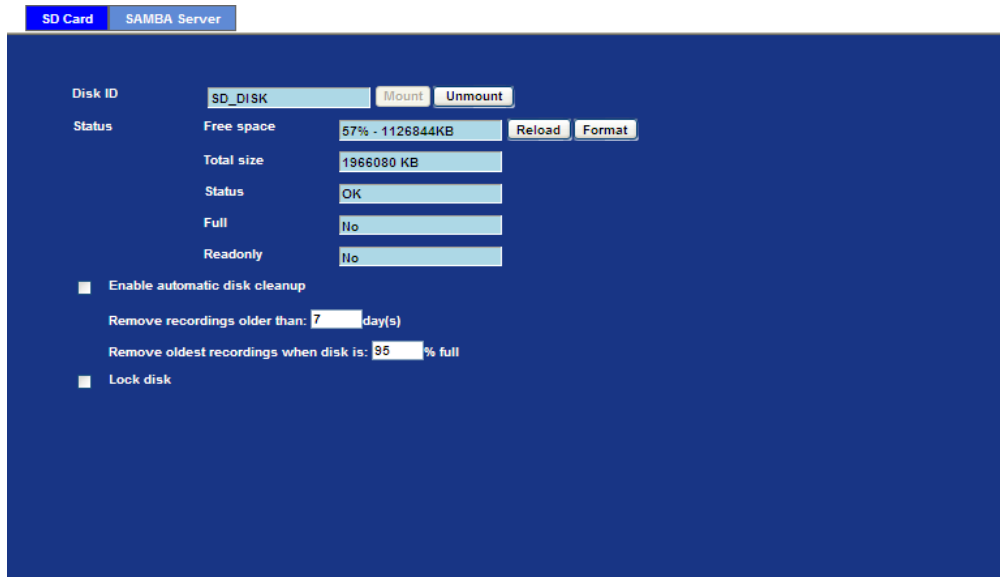
Audio Alarm Level:

Define the sensitivity value of audio detection. The lower value will be more sensitivity.

6.10. Storage Configuration

This page shows the status of attached SD card and Samba server. You may setup related parameters to manage the attached SD card or Samba server also.

6.10.1. SD Card



Enable automatic disk cleanup Delete old recorded files while the conditions are reached as below.

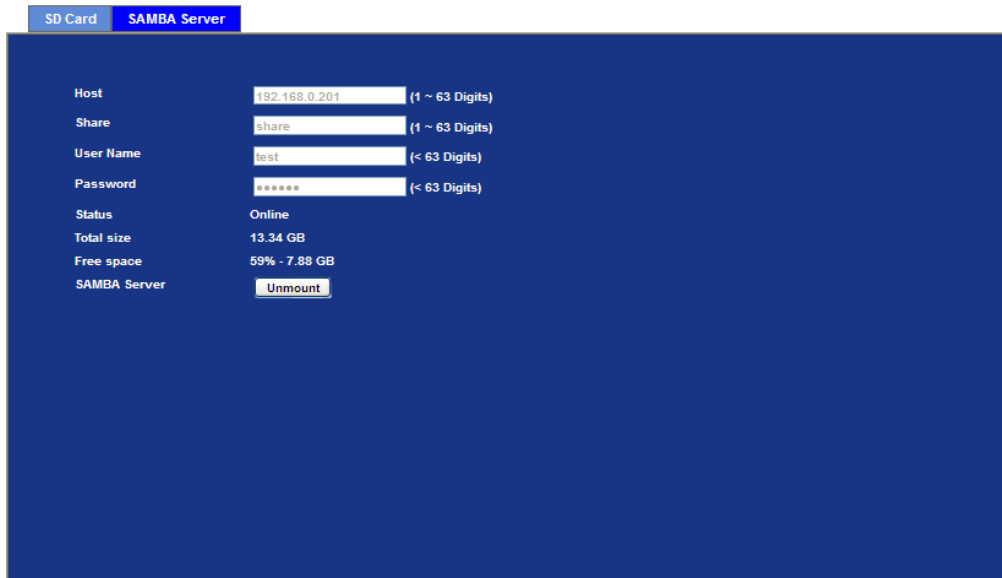
Remove recordings order than Delete old files by days.

Remove oldest recordings when disk is Delete old files by left capacity.

Lock disk Lock the SD card. Once SD card is locked, all files can't be deleted.

6.10.2. SAMBA Server

This page shows the status of SAMBA server. You may setup related parameters to manage the remote SAMBA server.



Host	192.168.0.201	(1 ~ 63 Digits)
Share	share	(1 ~ 63 Digits)
User Name	test	(< 63 Digits)
Password	*****	(< 63 Digits)
Status	Online	
Total size	13.34 GB	
Free space	59% - 7.88 GB	
SAMBA Server	<input type="button" value="Unmount"/>	

Host	Type the SAMBA server domain name or the IP address of the SMTP server.
Share	Type the share folder of remote SAMBA server which the camera will upload files to this space.
User name	Delete old files by left capacity.
Password	Type the password for the remote SAMBA server.

6.11. Continuous Recording

The camera can continuously record video stream into files and save them to attached SD card or remote SAMBA server.

Continuous Recording



Continuous Recording	Enable or disable this function.
Record File Type	Choose a video profile to record.
DISK	Save recorded files to SD card or remote SAMBA server.
Path	Define the folder path for the recorded files.
Restart	Be careful, click this button will delete all continuous files recorded in SD card or remote SAMBA server.

6.12. Recording List

6.12.1. Recording List

This page only shows the event recording files which stored in SD card. User may play or delete the selected file.

Recording List Continuous Recording List

Date	File	Trigger by	Size
20120329	20120326_113301.avi	motion0Occur	2004 KB
20120330	20120326_115716.avi	motion0Occur	2068 KB
20120326	20120326_115732.avi	motion0Occur	2081 KB
	20120326_115740.avi	motion0Occur	2067 KB
	20120326_115749.avi	motion0Occur	2093 KB
	20120326_115755.avi	motion0Occur	2059 KB
	20120326_115932.avi	motion0Occur	2057 KB
	20120326_115943.avi	motion0Occur	2056 KB
	20120326_115951.avi	motion0Occur	2090 KB
	20120326_121234.avi	motion0Occur	2074 KB
	20120326_121329.avi	motion0Occur	2067 KB
	20120326_121411.avi	motion0Occur	2056 KB

Reload Play Remove

6.12.2. Continuous Recording List

This page only shows the continuous recording files which stored in SD card or remote SAMBA server. User may play or delete the selected file.

Recording List Continuous Recording List

Disk: SD Card
Path: PLANET-00304FA25DBE

Date	File	Trigger by	Size
20120326	20120326_113156.avi	continuous	15506 KB
	20120326_113656.avi	continuous	17931 KB
	20120326_114156.avi	continuous	19834 KB
	20120326_114657.avi	continuous	19608 KB
	20120326_115157.avi	continuous	19150 KB
	20120326_115659.avi	continuous	50094 KB
	20120326_120200.avi	continuous	20253 KB
	20120326_120701.avi	continuous	19704 KB
	20120326_121201.avi	continuous	27162 KB

Reload Play Remove

6.13. Event Server Configuration

6.13.1 FTP Server

You may setup FTP parameters for further operation of Event Schedule. That's, if users want to send the alarm message to an FTP server, it will need to configure parameters here and also add at least one event schedule to enable event triggering as SMTP.

FTP Server			
Name	FTP Server	FTP Port	FTP Path
FTP	192.168.0.174	21	/anthony/test
Name	FTP (< 22 Digits)		
FTP Server	192.168.0.174 (< 65 Digits) <input type="button" value="Test"/>		
FTP Login Name	admin (< 22 Digits)		
FTP Login Password	***** (< 22 Digits)		
FTP Port	21 (1 ~ 65535)		
FTP Path	/admin/test (< 65 Digits)		
FTP Passive Mode	<input type="radio"/> Disable <input checked="" type="radio"/> Enable		

Name User can specify multiple FTP paths as wish. Therefore, user needs to specify a name for each FTP setting.

FTP Server Type the server name or the IP address of the FTP server.

Test Check the FTP server whether this account is available or not.

FTP Login name Type the user name for the FTP server.

FTP Login Password Type the password for the FTP server.

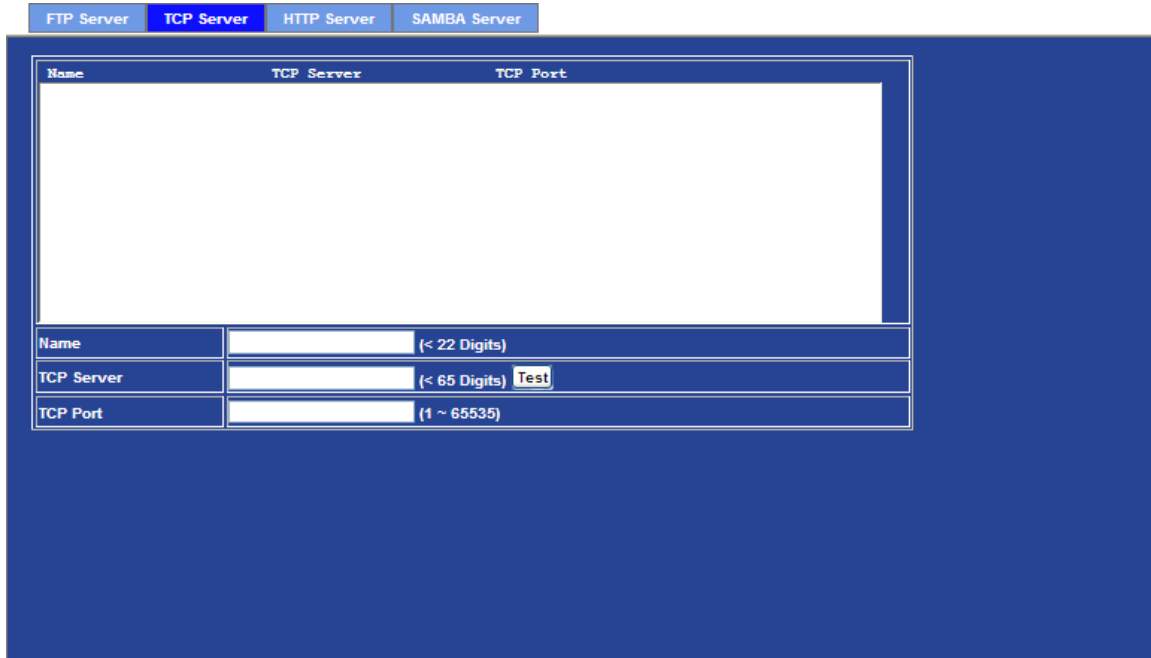
FTP Port Set port number of FTP service.

FTP Path Set working directory path of FTP server.

FTP Passive Mode Select passive or active mode connecting to FTP server.

6.13.2. FTP Server

In addition to send video file to FTP server, the device also can send event message to specified TCP server.



Name	TCP Server	TCP Port

Name (< 22 Digits)

TCP Server (< 65 Digits)

TCP Port (1 ~ 65535)

Name User can specify multiple TCP servers as wish. Therefore, user needs to specify a name for each TCP server setting.

TCP Server Type the server name or the IP address of the TCP server.

TCP Port Set port number of TCP server.

6.13.3. HTTP Server

The device also can send event message to specified HTTP server.



Name		HTTP Server		Proxy Address	
Name	<input type="text"/>			< 22 Digits	
URL	<input type="text" value="http://"/>	<input type="text"/>			< 129 Digits <input type="checkbox"/> Test
HTTP Login Name	<input type="text"/>			< 22 Digits	
HTTP Login Password	<input type="text"/>			< 22 Digits	
Proxy Address	<input type="text"/>			< 129 Digits	
Proxy Login Name	<input type="text"/>			< 22 Digits	
Proxy Login Password	<input type="text"/>			< 22 Digits	
Proxy Port	<input type="text"/>			1 ~ 65535	

Name	User can specify multiple HTTP servers as wish. Therefore, user needs to specify a name for each HTTP server setting.
URL	Type the server name or the IP address of the HTTP server.
Test	Check the HTTP server whether it is available or not.
HTTP Login name	Type the user name for the HTTP server.
HTTP Login Password	Type the password for the HTTP server.
Proxy Address	Type the server name or the IP address of the HTTP Proxy.
Proxy Login name	Type the user name for the HTTP Proxy.
Proxy Login Password	Type the password for the HTTP Proxy.
Proxy Port	Set port number of Proxy.

6.13.4. SAMBA Server

The device also can send video stream to specified SAMBA server. Most of the time, the SAMBA server will be another PC or NAS server.



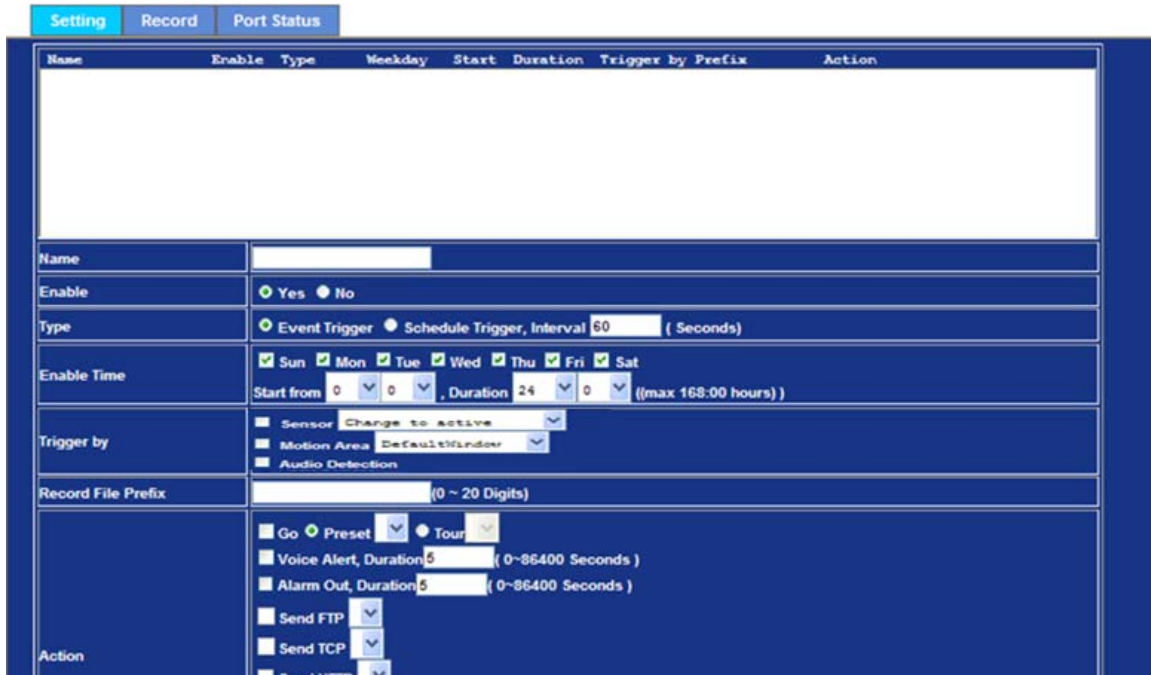
Name	SAMBA Server	SAMBA Path
samba	192.168.0.201	share

Name	samba	(< 22 Digits)
SAMBA Server	192.168.0.201	(< 65 Digits) <input type="button" value="Test"/>
SAMBA Login Name	test	(< 22 Digits)
SAMBA Login Password	*****	(< 22 Digits)
SAMBA Path	share	(< 65 Digits)

Name	User can specify multiple HTTP servers as wish. Therefore, user needs to specify a name for each HTTP server setting.
SAMBA Server	Type the server name or the IP address of the SAMBA server.
Test	Check the SAMBA server whether this account is available or not.
SAMBA Login name	Type the user name for the SAMBA server.
SAMBA Login Password	Type the password for the SAMBA server.
SAMBA Path	Set working directory path of SAMBA server.

6.14. Event Schedule Configuration

This menu is used to specify the schedule of Event or Schedule Trigger and activate the some actions provided by this device. Where the Schedule Trigger will be activated by user-define interval without event happened.



Name Name of the Event or Schedule.

Enable Enable or disable this Event or Schedule.

Type Schedule start with Event trigger or Schedule trigger.

Enable Time Define the feasible time slot.

Trigger by Select the triggered sources with event trigger.

Record File Prefix Define the prefix of recorded filename

Action Define the actions once event triggered.

Example1.

Send file to FTP server by motion triggered always:

Step 1 Select event trigger

Step 2 Enable time: start from 00:00 to 24:00 every day

Step 3 Trigger by: Motion Area (Added in Object Detection page)

Step 4 Action: Send FTP (Add in Event Server -> FTP Server page)

Setting Record Port Status

Name	Enable	Type	Weekday	Start	Duration	Trigger by Prefix	Action
Send to FTP	yes	Event	111111	0:0	24:0	x,M0,x	FTP

Name:

Enable: Yes No

Type: Event Trigger Schedule Trigger, Interval (Seconds)

Enable Time: Sun Mon Tue Wed Thu Fri Sat
 Start from : , Duration : ((max 168:00 hours))

Trigger by: Sensor
 Motion Area
 Audio Detection

Record File Prefix: (0 ~ 20 Digits)

Action: Go Preset Tour
 Voice Alert, Duration (0~86400 Seconds)
 Alarm Out, Duration (0~86400 Seconds)
 Send FTP
 Send TCP
 Send HTTP

Example2.

Send file to E-Mail server by motion triggered from Friday 18:00 to Saturday 06:00

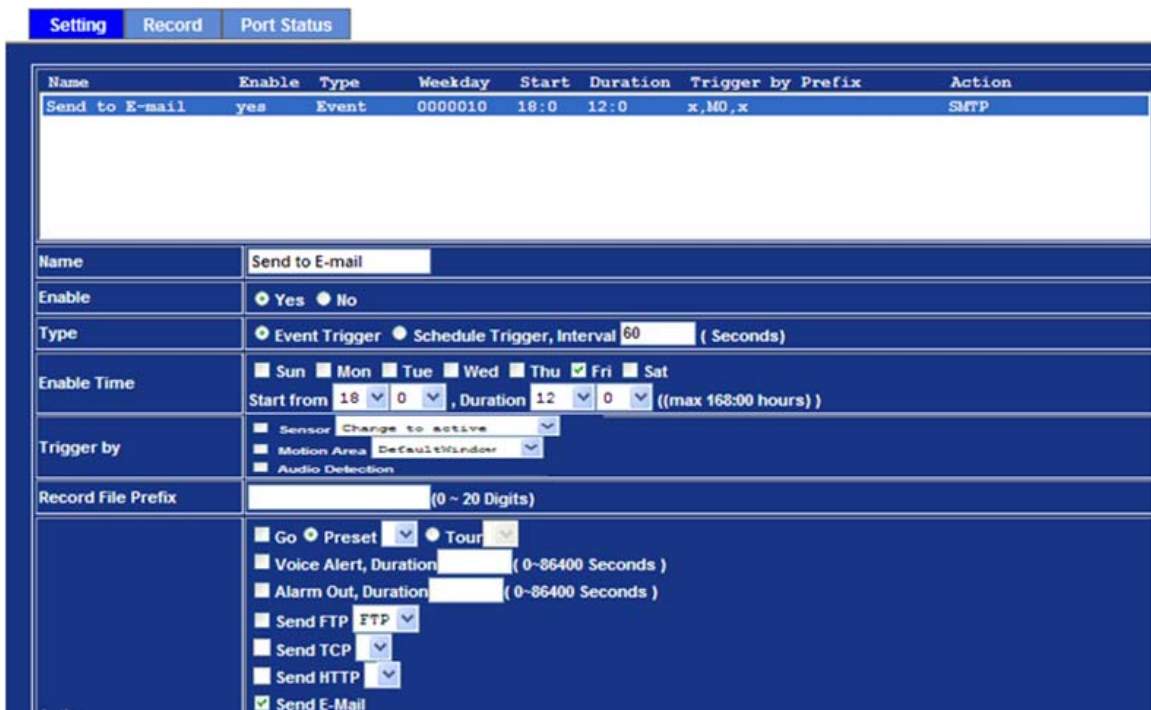
Step 1 Select event trigger.

Step 2 Enable time: start from Friday 18:00 and keep work in 12 hours, so it will stop on Saturday 06:00.

Step 3 Trigger by: Motion Area (Added in Object Detection page)

Step 4 Action: Send e-mail (Add in E-Mail page)

- i. To email address: You need to input the receiver email address.
- ii. Subject: You could specify the email subject.
- iii. Message: You could specify the email content.



Example3.

Enable Voice Alert every 10-minute during 18:00 to 24:00 from Monday to Friday.

Step 1 Type: Select schedule trigger and interval is 10-minute.

Step 2 Enable Time: Select Monday to Friday, and set start time from 18:00 and keep work in 6 hours.

Step 3 Trigger by: You do not need to choose it, because this will be triggered every minute.

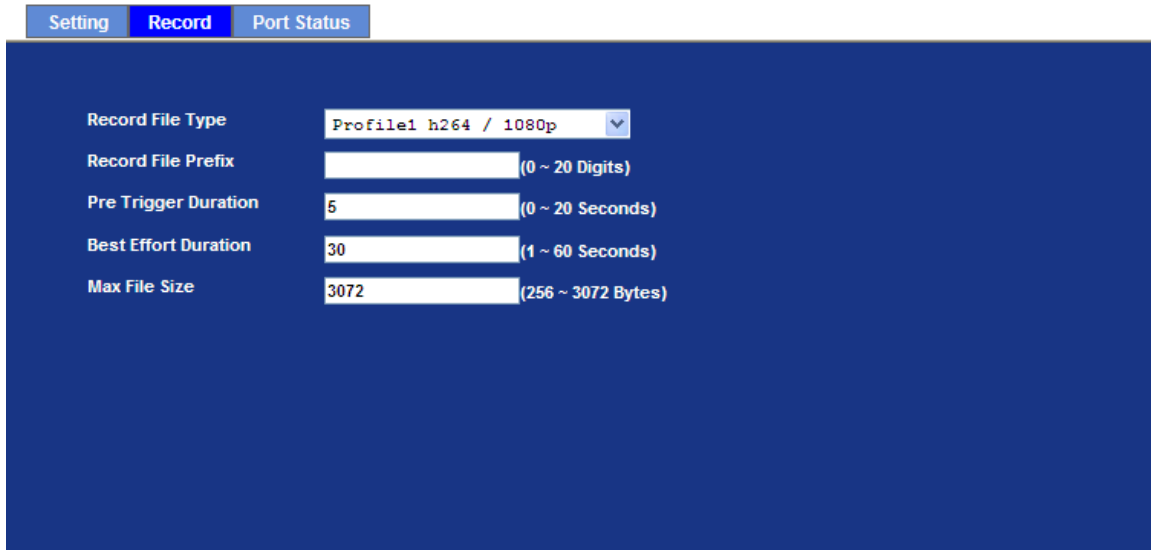
Step 4 Action: Voice Alert.

Name	Enable	Type	Weekday	Start	Duration	Trigger by Prefix	Action
Triger Voice alert	yes	Schedule	0111110	18:0	6:0	x,MD,x	VOICE

Name	Triger_Voice_alert
Enable	<input checked="" type="radio"/> Yes <input type="radio"/> No
Type	<input type="radio"/> Event Trigger <input checked="" type="radio"/> Schedule Trigger, Interval 600 (Seconds)
Enable Time	<input type="checkbox"/> Sun <input checked="" type="checkbox"/> Mon <input checked="" type="checkbox"/> Tue <input checked="" type="checkbox"/> Wed <input checked="" type="checkbox"/> Thu <input checked="" type="checkbox"/> Fri <input type="checkbox"/> Sat Start from 18:00, Duration 6:00 ((max 168:00 hours))
Trigger by	<input type="checkbox"/> Sensor Change to active <input type="checkbox"/> Motion Area DefaultWindow <input type="checkbox"/> Audio Detection
Record File Prefix	(0 ~ 20 Digits)
Action	<input type="checkbox"/> Go <input checked="" type="radio"/> Preset <input type="radio"/> Tour <input checked="" type="checkbox"/> Voice Alert, Duration 10 (0-86400 Seconds) <input type="checkbox"/> Alarm Out, Duration (0-86400 Seconds) <input type="checkbox"/> Send FTP ETP <input type="checkbox"/> Send TCP <input type="checkbox"/> Send HTTP <input type="checkbox"/> Send E-Mail

6.15. Record Configuration

User can choose the type of record file for event or schedule application.



Record File Type Choose AVI or JPEG file format for record file.

Record File Prefix Define the prefix of recorded filename.

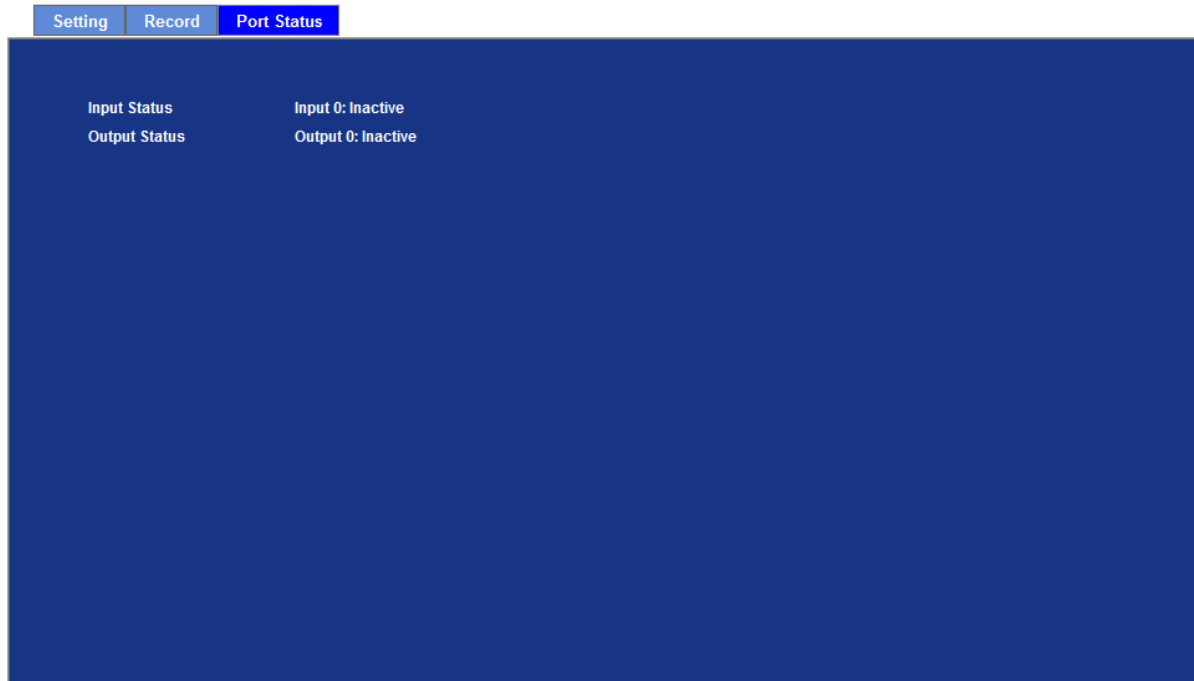
Pre-Trigger Duration Define the maximum duration of pre-alarm.

Best Effort Duration Define the best effort duration of post-alarm.

Max File Size Define the maximum buffer size of record file.

6.16. Port Status

User can check the status of digital input and output (DIDO).



Input Status	Show either inactive or active.
---------------------	---------------------------------

Output Status	Show either inactive or active.
----------------------	---------------------------------

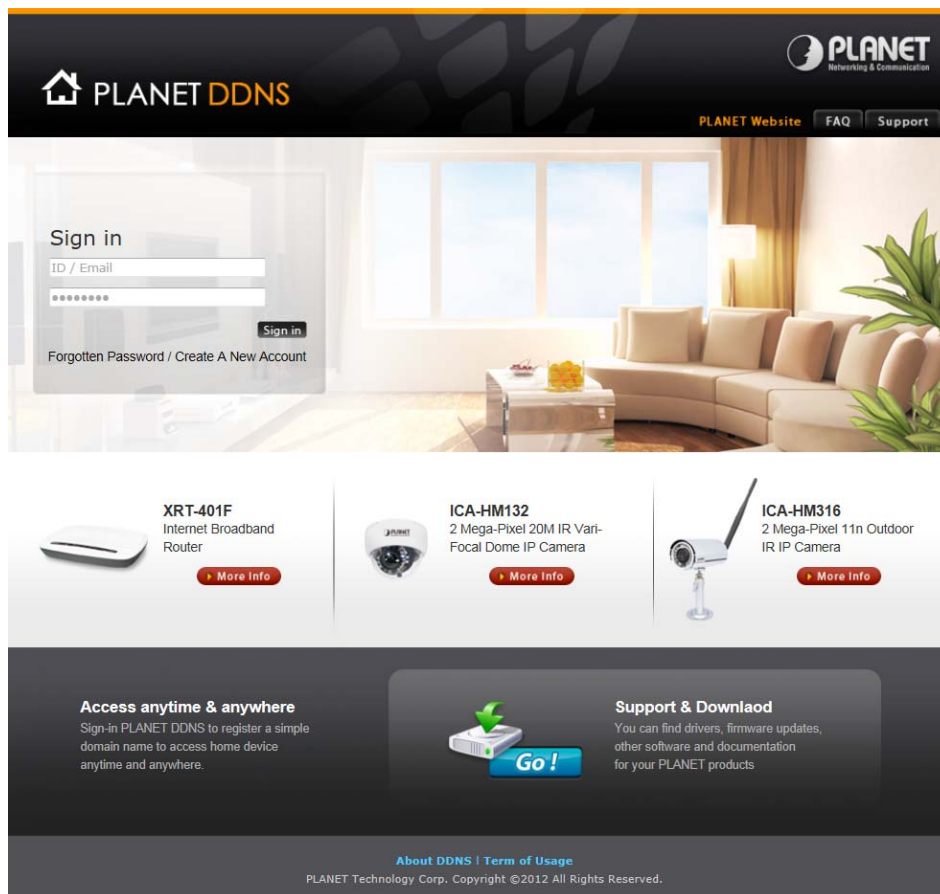
Chapter 7. PLANET DDNS Application

7.1. Configure PLANET DDNS steps:

Step 1 Enable DDNS option through accessing web page of ICA-2200.

Step 2 Select on DDNS server provide, and register an account if you do not use yet.

Let's take dyndns.org as an example. Register an account in <http://planetddns.com>



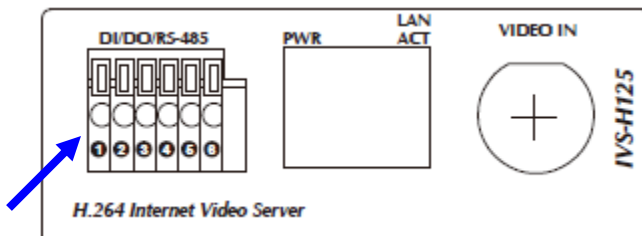
The screenshot shows the PLANET DDNS website interface. At the top, there is a navigation bar with the PLANET logo and links for 'PLANET Website', 'FAQ', and 'Support'. The main content area features a 'Sign in' form with fields for 'ID / Email' and a password field, along with a 'Sign in' button and a link for 'Forgotten Password / Create A New Account'. Below the sign-in form, there are three product cards: 'XRT-401F Internet Broadband Router', 'ICA-HM132 2 Mega-Pixel 20M IR Vari-Focal Dome IP Camera', and 'ICA-HM316 2 Mega-Pixel 11n Outdoor IR IP Camera'. Each card includes an image of the product and a 'More Info' button. At the bottom, there is a section for 'Access anytime & anywhere' and 'Support & Download', with a 'Go!' button and a link for 'About DDNS | Term of Usage'. The footer contains the text 'PLANET Technology Corp. Copyright ©2012 All Rights Reserved.'

Chapter 8.

Alarm I/O Connector

Some features of the Camera can be activated by an external sensor that senses physical changes in the area device is monitoring. These changes can include intrusion detection or certain physical change in the monitored area. For examples, the external sensor can be a door switch or an infrared motion detector. These devices are customer provided, and are available from dealers who carry surveillance and security products. Electrically, they must be able to provide a momentary contact closure.

This device provides a general I/O terminal block with one digital input and one output for device control. Pin 2 and 3 can be connected to an external sensor. The input voltage will be monitored from the initial state 'LOW'. If the external sensor need 12VDC power, then it can connect to Pin1 (50mA maximum). The Alarm Output of pin 3 and 4 can be used to turn on or off the external device. The pin5 and 6 are connected to RS485 interface.

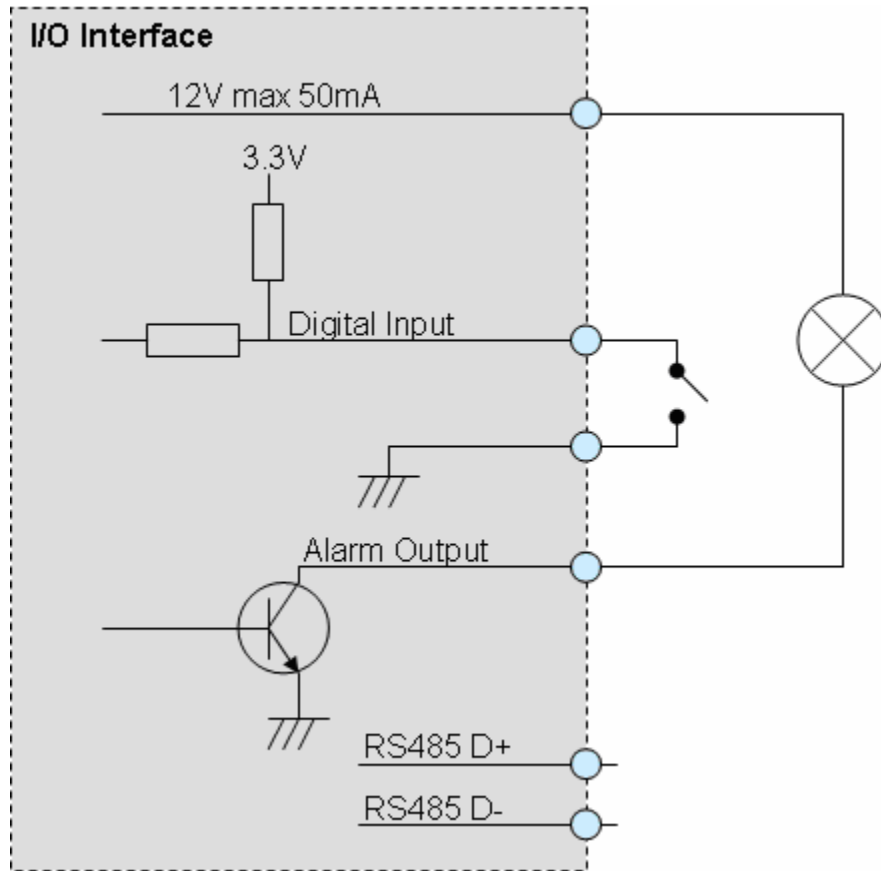


I/O Connector

User can refer to the schematic below to make a proper connection between I/O connector and external sensor and output device.

Pin	Function
1	12VDC power supply (50mA maximum)
2	Digital Input
3	GND
4	Alarm Output
5	RS485 data +
6	RS485 data -

Explanation of External I/O Circuit Diagram:



CAUTION!

• THE LOW VOLTAGE/CURRENT CIRCUITS AND HIGH VOLTAGE/ CURRENT CIRCUITS ARE IN THE NETWORK CAMERA CIRCUIT. THE QUALIFIED ELECTRICIAN SHOULD DO THE WIRING NOT BY YOURSELF. INCORRECT WIRING COULD DAMAGE NWTWORK CAMERA. YOU COULD RECEIVE THE FATAL ELECTRIC SHOCK.

• THE EXTERNAL I/O IS NOT CAPABLE OF CONNECTING DIRECTLY TO DEVICES THAT REQUIRE LARGE AMOUNTS OF CURRENT. IN SOME CASES, A CUSTOM INTERFACE CIRCUIT (CUSTOMER PROVIDED) MAY HAVE TO BE USED. SERIOUS DAMAGE TO NETWORK CAMERA MAY RESULT IF A DEVICE IS CONNECTED TO THE EXTERNAL I/O THAT EXCEEDS ITS ELECTRICAL CAPABILITY.

Chapter 9.

PING IP Address

The PING (stands for Packet Internet Groper) command is used to detect whether a specific IP address is accessible by sending a packet to the specific address and waiting for a reply. It's also a very useful tool to confirm the device installed or if the IP address conflicts with any other devices over the network.

If you want to make sure the IP address of the device, utilize the PING command as follows:

- Launch a Command Prompt.
- Type ping x.x.x.x, where x.x.x.x is the IP address of the device. For example, ping
192.168.0.20

The replies, as illustrated below, will provide an explanation to the problem.



```
Command Prompt
Microsoft Windows XP [Version 5.1.2600]
(C) Copyright 1985-2001 Microsoft Corp.

D:\Documents and Settings\Administrator>PING 192.168.0.20

Pinging 192.168.0.20 with 32 bytes of data:

Reply from 192.168.0.20: bytes=32 time<1ms TTL=64
Reply from 192.168.0.20: bytes=32 time<1ms TTL=64
Reply from 192.168.0.20: bytes=32 time<1ms TTL=64
Reply from 192.168.0.20: bytes=32 time<1ms TTL=64

Ping statistics for 192.168.0.20:
    Packets: Sent = 4, Received = 4, Lost = 0 (0% loss),
    Approximate round trip times in milli-seconds:
        Minimum = 0ms, Maximum = 1ms, Average = 0ms

D:\Documents and Settings\Administrator>
```

If you want to detect any other devices conflicts with the IP address of Network Camera, also can utilize the PING command but you must disconnect the Camera from the network first.

Chapter 10.

Bandwidth Estimation

The frame rate of video transmitted from the device depends on connection bandwidth between client and server, video resolution, codec type, and quality setting of server. Here is a guideline to help you roughly estimate the bandwidth requirements for your device.

The required bandwidth depends on content of video source. The slow motion video will produce smaller bit rate generally and fast motion will produce higher bit rate vice versa. Actual results generated by the device may be varying.

Image Resolution	Average range of data sizes for JPEG mode	Average bit rate for MPEG4 mode	Average bit rate for H.264 mode
QCIF	6 ~ 12k byte per frame	64kbps~256kbps @ 30fps	32kbps~192kbps @ 30fps
CIF	20 ~ 40k byte per frame	384kbps~1024kbps @ 30fps	256kbps~768kbps @ 30fps
4CIF(D1)	50 ~ 150K byte per frame	768kbps~4096kbps @ 30fps	512kbps~3076kbps @ 30fps

Note: Audio streaming also takes bandwidth around 32kbps. Some xDSL/Cable modem upload speeds could not even reach up to 128 kbps. Thus, you may not be able to receive good quality video while also streaming audio on a 128 kbps or lower connection. Even though the upload speed is more than 128kbps, for optimal video performance, disabling audio streaming will get better video performance.

Chapter 11.

Configure Port Forwarding Manually

The device can be used with a router. If the device wants to be accessed from the WAN, its IP address needs to be setup as fixed IP address, also the port forwarding or Virtual Server function of router needs to be setup. This device supports UPnP traversal function. Therefore, user could use this feature to configure port forwarding of NAT router first. However, if user needs to configure port forwarding manually, please follow the steps as below:

Manually installing the device with a router on your network is an easy 3–step procedure as following:

1. Assign a local/fixed IP address to your device
2. Access the Router with Your Web browser
3. Open/Configure Virtual Server Ports of Your Router

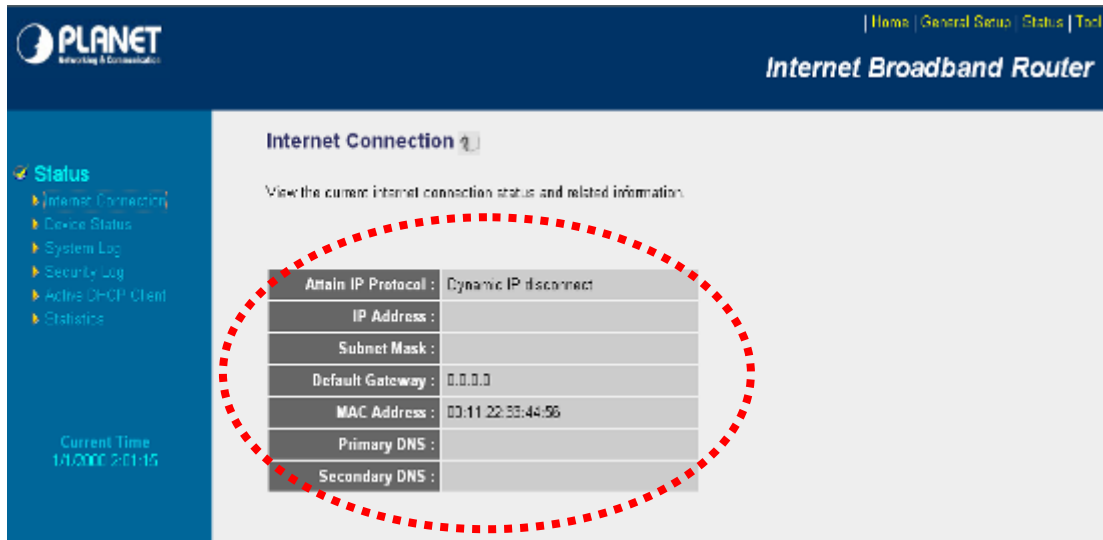
1. Assign a local/fixed IP address to your device

The device must be assigned a local and fixed IP Address that allows it to be recognized by the router. Manually setup the device with a fixed IP address, for example, *192.168.0.100*.

2. Access the Router with Your Web browser

The following steps generally apply to any router that you have on your network. The PLANET WNRT-620 is used as an example to clarify the configuration process. Configure the initial settings of the router by following the steps outlined in the router's **Quick Installation Guide**.

If you have cable or DSL service, you will most likely have a dynamically assigned WAN IP Address. 'Dynamic' means that your router's WAN IP address can change from time to time depending on your ISP. A dynamic WAN IP Address identifies your router on the public network and allows it to access the Internet. To find out what your router's WAN IP Address is, go to the **Status** screen on your router and locate the WAN information for your router. As shown on the following page the WAN IP Address will be listed. This will be the address that you will need to type in your web browser to view your camera over the Internet. Be sure to uncheck the **Reset IP address at next boot** button at the top of the screen after modifying the IP address. Failure to do so will reset the IP address when you restart your computer.



Your WAN IP Address will be listed here.

3. Open/set Virtual Server Ports to enable remote image viewing

The firewall security features built into the router and most routers prevent users from accessing the video from the device over the Internet. The router connects to the Internet over a series of numbered ports. The ports normally used by the device are blocked from access over the Internet. Therefore, these ports need to be made accessible over the Internet. This is accomplished using the **Virtual Server** function on the router. The Virtual Server ports used by the camera must be opened through the router for remote access to your camera.

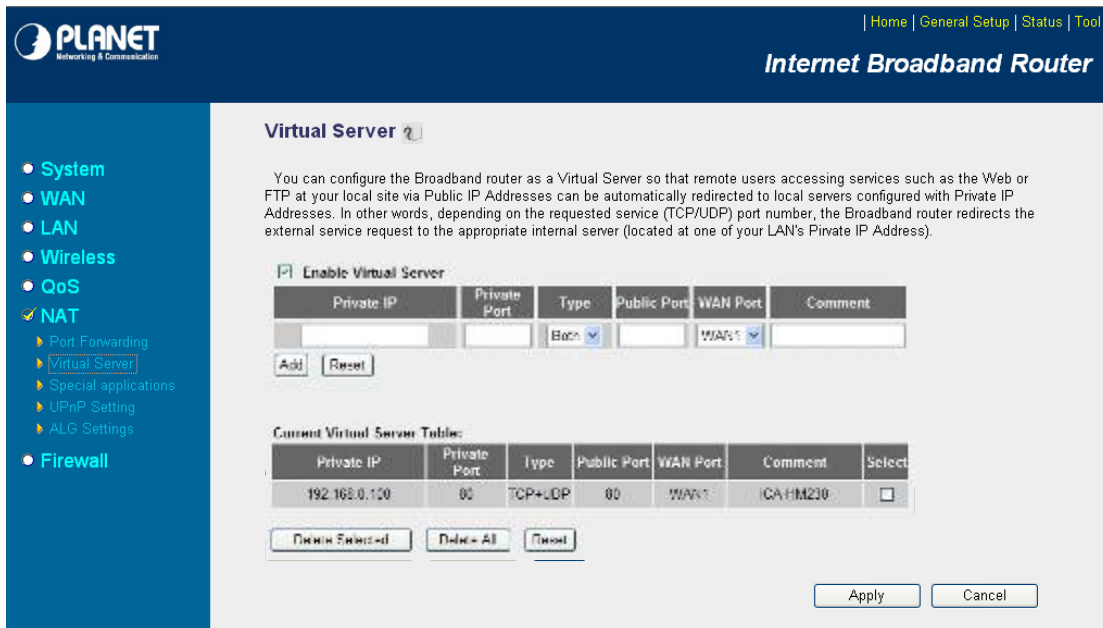
Follow these steps to configure your router's Virtual Server settings

- Click **Enabled**.
- Enter a unique name for each entry.
- Select **Both** under **Protocol Type (TCP and UDP)**
- Enter your camera's local IP Address (e.g., **192.168.0.100**, for example) in the **Private IP** field.
- If you are using the default camera port settings, enter **80** into the **Public** and **Private Port** section, click **Add**.

A check mark appearing before the entry name will indicate that the ports are enabled.

NOTE Some ISPs block access to port 80. Be sure to check with your ISP so that you can open the appropriate ports accordingly. If your ISP does not pass traffic on port 80, you will need to change the port the camera uses from 80 to something else, such as 8080. Not all routers are the same, so refer to your user manual for specific instructions on

how to open ports.



The screenshot shows the 'Virtual Server' configuration page in the PLANET Internet Broadband Router web interface. The page includes a navigation menu on the left with categories like System, WAN, LAN, Wireless, QoS, NAT, and Firewall. The NAT section is expanded to show 'Virtual Server' as the selected option. The main content area features a text description of Virtual Server functionality, a checkbox to 'Enable Virtual Server', and a table for adding new entries. Below this is a table showing the 'Current Virtual Server Table' with one entry for IP 192.168.0.100 on port 80. At the bottom, there are 'Apply' and 'Cancel' buttons.

Virtual Server

You can configure the Broadband router as a Virtual Server so that remote users accessing services such as the Web or FTP at your local site via Public IP Addresses can be automatically redirected to local servers configured with Private IP Addresses. In other words, depending on the requested service (TCP/UDP) port number, the Broadband router redirects the external service request to the appropriate internal server (located at one of your LAN's Private IP Address).

Enable Virtual Server

Private IP	Private Port	Type	Public Port	WAN Port	Comment
<input type="text"/>	<input type="text"/>	Both	<input type="text"/>	WAN1	<input type="text"/>

Add Reset

Current Virtual Server Table:

Private IP	Private Port	Type	Public Port	WAN Port	Comment	Select
192.168.0.100	80	TCP+UDP	80	WAN1	ICAHM210	<input type="checkbox"/>

Blank Enabled Blank All Blank

Apply Cancel

Enter valid ports in the **Virtual Server** section of your router. Please make sure to check the box on this line to enable settings. Then the device can be access from WAN by the router's WAN IP Address.

By now, you have finished your entire PC configuration for this device.

Chapter 12.

Power Line Frequency

COUNTRY	VOLTAGE	FREQUENCY	COMMENTS
Argentina	220V	50 Hz	*Neutral and line wires are reversed from that used in Australia and elsewhere.
Australia	230V*	50 Hz	*Outlets typically controlled by adjacent switch. Though <i>nominal</i> voltage has been officially changed to 230V, 240V is within tolerances and commonly found.
Austria	230V	50 Hz	
Brazil	110/220V*	60 Hz	*127V found in states of Bahia, Paran?(including Curitiba), Rio de Janeiro, S 綵 Paulo and Minas Gerais (though 220V may be found in some hotels). Other areas are 220V only, with the exception of Fortaleza (240V).
Canada	120V	60 Hz	
China, People's Republic of	220V	50 Hz	
Finland	230V	50 Hz	
France	230V	50 Hz	
Germany	230V	50 Hz	
Hong Kong	220V*	50 Hz	
India	230V	50 Hz	
Italy	230V	50 Hz	
Japan	100V	50/60 Hz*	*Eastern Japan 50 Hz (Tokyo, Kawasaki, Sapporo, Yokohoma, and Sendai); Western Japan 60 Hz (Osaka, Kyoto, Nagoya, Hiroshima)
Malaysia	240V	50 Hz	
Netherlands	230V	50 Hz	
Portugal	230V	50 Hz	
Spain	230V	50 Hz	
Sweden	230V	50 Hz	
Switzerland	230V	50 Hz	
Taiwan	110V	60 Hz	
Thailand	220V	50 Hz	
United Kingdom	230V*	50 Hz	*Outlets typically controlled by adjacent switch. Though <i>nominal</i> voltage has been officially changed to 230V, 240V is within tolerances and commonly found.

United States of America	120V	60 Hz	
--------------------------	------	-------	--

Chapter 13.

3GPP

To use the 3GPP function, in addition to previous section, you might need more information or configuration to make this function work.

Note: that to use the 3GPP function, it strongly recommends to install the Networked Device with a public and fixed IP address without any firewall protection.

RTSP Port:

Port 554 is the default for RTSP service. However, sometimes, some service providers change this port number for some reasons. If so, user needs to change this port accordingly.

Dialing procedure:

1. Choose a verified player (PacketVideo or Realplayer currently)
2. Use the following URL to access:

<rtsp://host/mpeg4/media.3gp>

Where *host* is the host name or IP address of the camera.

Compatible 3G mobile phone:

Please contact your dealer to get the approved list of compatible 3G phone.

Chapter 14. Troubleshooting & Frequently Asked Questions

Question	Answer or Resolution
Features	
The video and audio codec is adopted in the device.	The device utilizes H.264, MPEG4 and JPEG triple compression to providing high quality images. Where H.264 and MPEG4 are standards for video compression and JPEG is a standard for image compression. The audio codec is defined as G.711/G.726 for RTSP streaming.
The maximum number of users accesses the device simultaneously.	The maximum number of users is limited to 20. However, it also depends on the total bandwidth accessed to this device from clients. The maximum data throughput of the device is around 100~200Mbps for UDP mode and 50Mbps for HTTP mode. Therefore, the actual number of connected clients is varying by streaming mode, settings of resolution, codec type, frame rate and bandwidth. Obviously, the performance of the each connected client will slow down when many users are logged on.
The device can be used outdoors or not.	The device is weatherproof.
Install this device	
Status LED does not light up.	<ul style="list-style-type: none"> • Check and confirm that the DC power adaptor, included in packaged, is used. Secure the power connector and re-power it on again. • If the problem is not solved, the device might be faulty. Contact your dealer for further help.
The network cabling is required for the device.	The device uses Category 5 or better UTP cable allowing 10 Base-T, 100 Base-TX, or 1000 Base-T networking.
The device will be installed and work if a firewall exists on the network.	If a firewall exists on the network, port 80 is open for ordinary data communication. The HTTP port and RTSP port need to be opened on the firewall or NAT router.
The username and password for the first time or after factory default reset	Username = admin and Password = admin . Note that it's all case sensitivity.
Forgot the username and password	Follow the steps below. <ol style="list-style-type: none"> 1. Restore the factory default setting by pressing and holding down more than 5 seconds on the device. 2. Reconfigure the device.
Forgot the IP address of the device.	Check IP address of device by using the PLANET IP Wizard II program or by UPnP discovery.
PLANET IP Wizard II program cannot find the device.	<ul style="list-style-type: none"> • Re-power the device if cannot find the unit within 1 minutes. • Do not connect device over a router. IP Wizard II program cannot detect device over a router. • If IP address is not assigned to the PC which running IP Wizard II program, then IP Wizard II program cannot find device. Make sure that IP address is assigned to the PC properly.

	<ul style="list-style-type: none"> • Antivirus software on the PC might interfere with the setup program. Disable the firewall of the antivirus software during setting up this device. • Check the firewall setting of your PC or Notebook.
Internet Explorer does not seem to work well with the device	Make sure that your Internet Explorer is version 8.0 or later. If you are experiencing problems, try upgrading to the latest version of Microsoft's Internet Explorer from the Microsoft webpage.
PLANET IP Wizard II program fails to save the network parameters.	<ul style="list-style-type: none"> • Network may have trouble. Confirm the parameters and connections of the device.
UPnP NAT Traversal	
Cannot work with NAT router	<ul style="list-style-type: none"> • Maybe NAT router does not support UPnP function. Please check user's manual of router and turn on UPnP function. • Maybe UPnP function of NAT router is not compatible to the IP camera. Please contact your dealer to get the approval routers list.
Some IP cameras are working but others are failed	<ul style="list-style-type: none"> • Maybe too many IP cameras have been installed on the LAN, and then NAT router is out of resource to support more cameras. You could turn off and on NAT router to clear out of date information inside router.
Access this device	
Cannot access the login page and other web pages of the Network Camera from Internet Explorer	<ul style="list-style-type: none"> • Maybe the IP Address of the Network Camera is already being used by another device or computer. To confirm this possible problem, disconnect the Network Camera from the network first, and then run the PING utility to check it out. • May be due to the network cable. Try correcting your network cable and configuration. Test the network interface by connecting a local computer to the Network Camera via a crossover cable. • Make sure the Internet connection and setting is ok. • Make sure enter the IP address of Internet Explorer is correct. If the Network Camera has a dynamic address, it may have changed since you last checked it. • Network congestion may prevent the web page appearing quickly. Wait for a while. <p>The IP address and Subnet Mask of the PC and Network Camera must be in the same class of the private IP address on the LAN.</p> <ul style="list-style-type: none"> • Make sure the http port used by the Network Camera, default=80, is forward to the Network Camera's private IP address. • The port number assigned in your Network Camera might not be available via Internet. Check your ISP for available port. • The proxy server may prevent you from connecting directly to the Network Camera, set up not to use the proxy server. • Confirm that Default Gateway address is correct. • The router needs Port Forwarding feature. Refer to your router's manual for details. • Packet Filtering of the router may prohibit access from an external network. Refer to your router's manual for details. • Access the Network Camera from the Internet with the global IP address of the router and port number of Network Camera. • Some routers reject the global IP address to access the Network Camera on the same LAN. Access with the private IP address and

	<p>correct port number of Network Camera.</p> <ul style="list-style-type: none"> • When you use DDNS, you need to set Default Gateway and DNS server address. • If it's not working after above procedure, reset Network Camera to default setting and installed it again. • If the problem is not solved, the Network Camera might be faulty. Contact your dealer for further help.
Image or video does not appear in the main page.	<ul style="list-style-type: none"> • The first time the PC connects to Network Camera, a pop-up Security Warning window will appear to download ActiveX Controls. When using Windows XP, or Vista, log on with an appropriate account that is authorized to install applications. • Network congestion may prevent the Image screen from appearing quickly. You may choose lower resolution to reduce the required bandwidth.
Check the device's ActiveX is installed on your computer	<p>Go to C:\Windows\Downloaded Program Files and check to see if there is an entry for the file "IPCamera Control". The status column should show "Installed". If the file is not listed, make sure your Security Settings in Internet Explorer are configured properly and then try reloading the device's home page. Most likely, the ActiveX control did not download and install correctly. Check your Internet Explorer security settings and then close and restart Internet Explorer. Try to browse and log in again.</p>
Internet Explorer displays the following message: "Your current security settings prohibit downloading ActiveX controls".	<p>Setup the IE security settings or configure the individual settings to allow downloading and scripting of ActiveX controls.</p>
The device work locally but not externally.	<ul style="list-style-type: none"> • Might be caused from the firewall protection. Check the Internet firewall with your system or network administrator. The firewall may need to have some settings changed in order for the device to be accessible outside your LAN. • Make sure that the device isn't conflicting with any other web server running on your LAN. • Check the configuration of the router settings allow the device to be accessed outside your local LAN. • Check the bandwidth of Internet connection. If the Internet bandwidth is lower than target bit rate, the video streaming will not work correctly.
The unreadable characters are displayed.	<p>Use the operating system of the selected language. Set the Encoding or the Character Set of the selected language on the Internet Explorer.</p>
Frame rate is slower than the setting.	<ul style="list-style-type: none"> • The traffic of the network and the object of the image affect the frame rate. The network congestion causes frame rate slower than the setting. • Check the bandwidth of Internet connection. If the Internet bandwidth is lower than target bit rate, the video streaming will not work correctly. • Ethernet switching hub can smooth the frame rate.
Blank screen or very slow video when audio is	<ul style="list-style-type: none"> • Your connection to the device does not have enough bandwidth to support a higher frame rate for the streamed image size. Try reducing the video streaming size to 160x120 or 320x240 and/or disabling audio.

enabled.	<ul style="list-style-type: none"> • Audio will consume 32 kbps. Disable audio to improve video. Your Internet connection may not have enough bandwidth to support streaming audio from the device.
Image Transfer on e-mail or FTP does not work.	<ul style="list-style-type: none"> • Default Gateway and DNS server address should be set up correctly. • If FTP does not work properly, ask your ISP or network administrator about the transferring mode of FTP server.
Pan/Tilt does not work. (including Click to Center and Preset Positioning)	<ul style="list-style-type: none"> • Click [Refresh] on the Internet Explorer when the communication stops with the device. The image will refresh. • Other clients may be operating Pan/Tilt. • Pan/Tilt operation has reached the end of corner.
Pan/Tilt does not work smoothly.	There may be a slight delay when you are using the Pan/Tilt feature in conjunction with streaming audio and video. If you find that there is a significant delay while panning or tilting the camera, try disabling the audio streaming and/or reducing the video streaming size.
Video quality of the device	
The focus on the Camera is bad.	<ul style="list-style-type: none"> • The lens is dirty or dust is attached. Fingerprints, dust, stain, etc. on the lens can degrade the image quality.
The color of the image is poor or strange.	<ul style="list-style-type: none"> • Adjust White Balance. • To insure the images you are viewing are the best they can be, set the Display property setting (color quality) to 16bit at least and 24 bit or higher if possible within your computer. • The configuration on the device image display is incorrect. You need to adjust the image related parameters such as brightness, contrast, hue and sharpness properly.
Image flickers.	<ul style="list-style-type: none"> • Wrong power line frequency makes images flicker. Make sure the 50 or 60Hz format of your device. • If the object is dark, the image will flicker. Make the condition around the Camera brighter.
Noisy images occur.	The video images might be noisy if the device is located in a very low light environment. Make the condition around the camera brighter or turn the IR LED on.
Miscellaneous	
Cannot play the recorded ASF file	Have installed Microsoft's DirectX 9.0 or later and use the Windows Media Player 11.0 or later to play the AVI file recorded by the Device.