

System Requirements

- Windows 98/ 98SE/ 2000/ ME/ XP
- Mac OS 8.6.1 or above (USB 1.1)

Hardware Installation for UH-420

1. Connect the adapter's power connector and USB hub's power connector by the power cable.
2. Connect the series-A connector of the USB cable into the downstream port of PC's USB host connector or one downstream port of the upper level of USB hub.
3. Connect the series-B connector of the USB cable into the upstream port of the USB hub.

Note: Please plug in the power adapter in our package when hub does not work under bus-power mode.

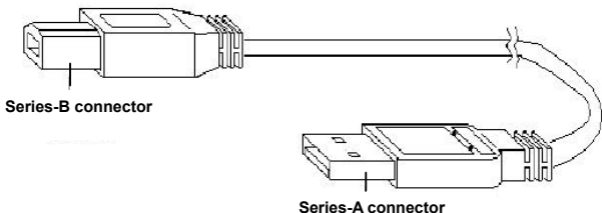


Figure1

Driver Installation Under Win 98 / 98SE

1. Windows will detect new hardware and start the Add New Hardware Wizard. See Figure 2. Click **Next**.

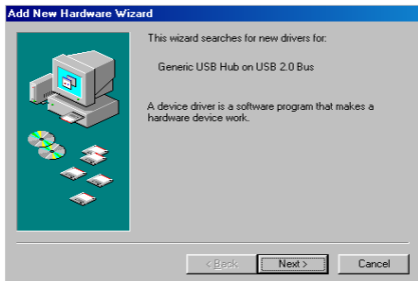


Figure 2

2. Select “Search for the best driver for your device”. See Figure 3. Click **Next**.

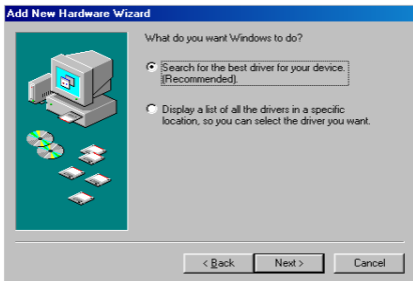


Figure 3

3. See Figure 4. Click **Next** to start the search for new drivers.



Figure 4

4. See Figure 5. Click **Next** to continue.



Figure 5

5. See Figure 6. Click **Finish** to complete driver installation.



Figure 6

6. Check the “Universal Serial Bus controllers” of “Device Manager” under “System Properties”. If it shows “Generic USB Hub on USB 2.0 Bus”, the driver for UH-420 is well installed. Shown as Figure 7.

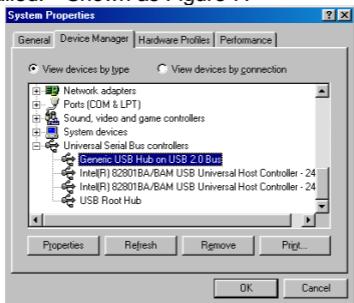


Figure 7

Driver Installation Under Win 2000 / ME / XP

1. See the welcome page of Found New Hardware Wizard as Figure 8. Click **Next**.

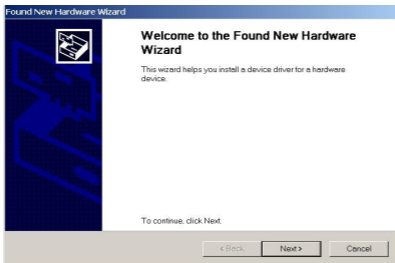


Figure 8

2. Select “Search for a suitable driver for my device (recommended)” as in Figure 9. Click **Next**.



Figure 9

3. See the “Locate Driver Files” page, as Figure 10. Click **Next**.

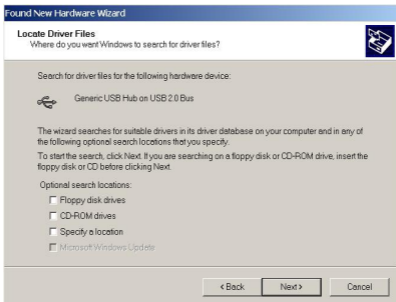


Figure 10

4. See the “Driver Files Search Results” page, as Figure 11. Click **Next**.



Figure 11

5. See “Completing the Found New Hardware Wizard”, as in Figure 12. Click **Finish** to complete driver installation.

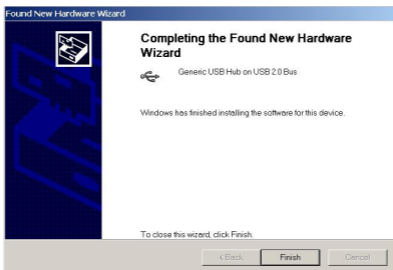


Figure 12

6. Check the “Universal Serial Bus controllers” of “Device Manager” under “System Properties”. If it shows “Generic USB Hub on USB 2.0 Bus”, the driver for UH-420 is well installed. Shown as Figure 13.

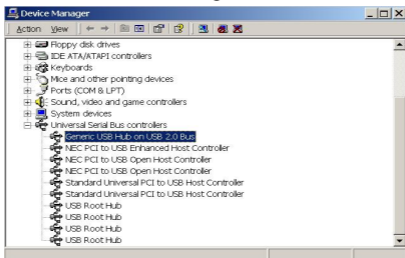


Figure 13