

CARDUSB3

Hardware User Manual

Revision 1.1
Monday, October 24, 2011

Contents

1 Revision History.....	3
2 Introduction	4
3 Scope.....	4
4 Attachment of 3MP camera board to USB port of PC	4
4.1 CARDUSB3 Camera View.....	4
4.2 CARDUSB3 to PC host interconnecting cable view	5
4.3 Attachment of Camera Board to PC Host.....	5
4.4 Final View of Camera board with cable	6
4.5 Attachment of Camera Board to PC	7

XtendLan USB Camera

1 Revision History

Rev	Date	Description	
1.0	12 – Aug– 2011	Initial Draft	
1.1	24 – Oct – 2011	Updating Rev.B Images	

2 Introduction

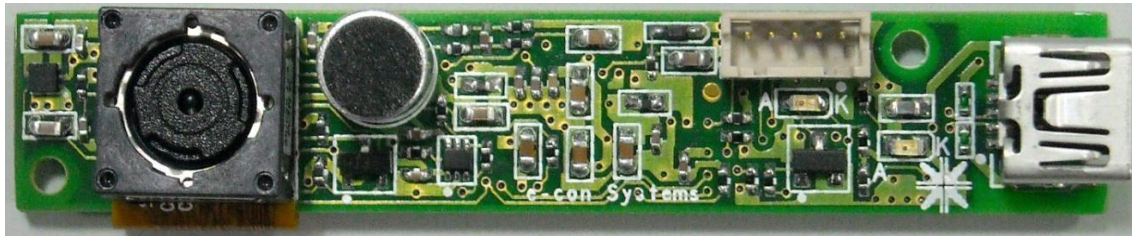
.This document indented to provide details of the CARDUSB3 camera sensor.

3 Scope

The scope of this document is to provide general instructions to start using the CARDUSB3 Camera Board

4 Attachment of 3MP Camera board to USB port of PC

4.1 CARDUSB3 camera view

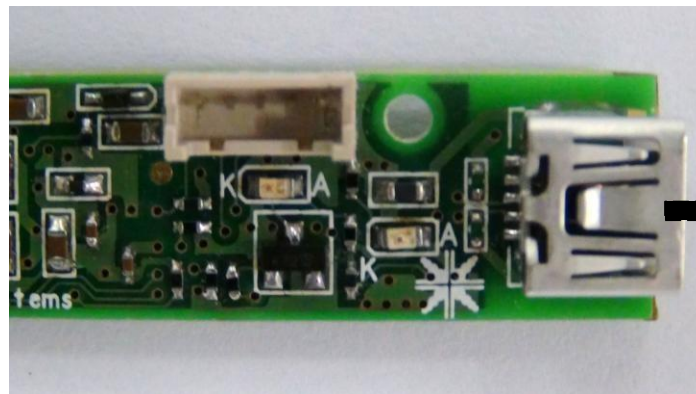


4.2 CARDUSB3 to PC HOST interconnecting cable view



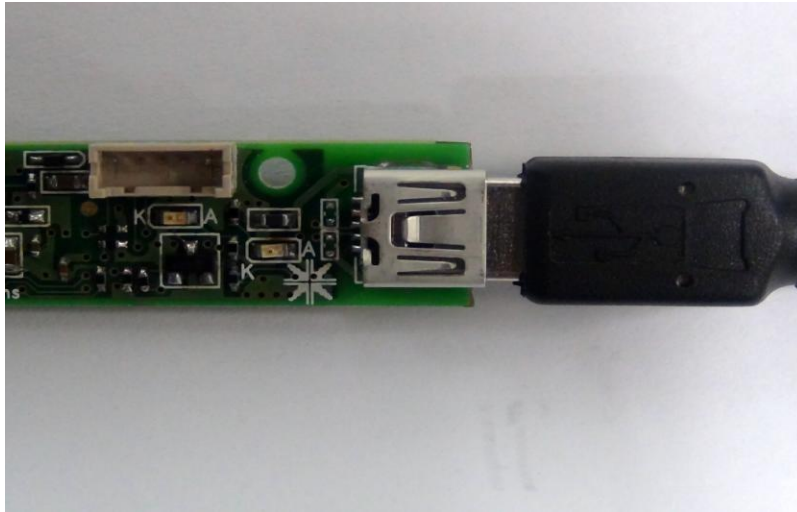
4.3 Attachment of Camera Board to PC HOST

Step 1 : Identification of USB Mini B connector



Mini B USB connector

Step 2 : Insertion of mating cable in connector



4.4 Final view of Camera Board with cable



4.5 Attachment of Camera Board to PC

