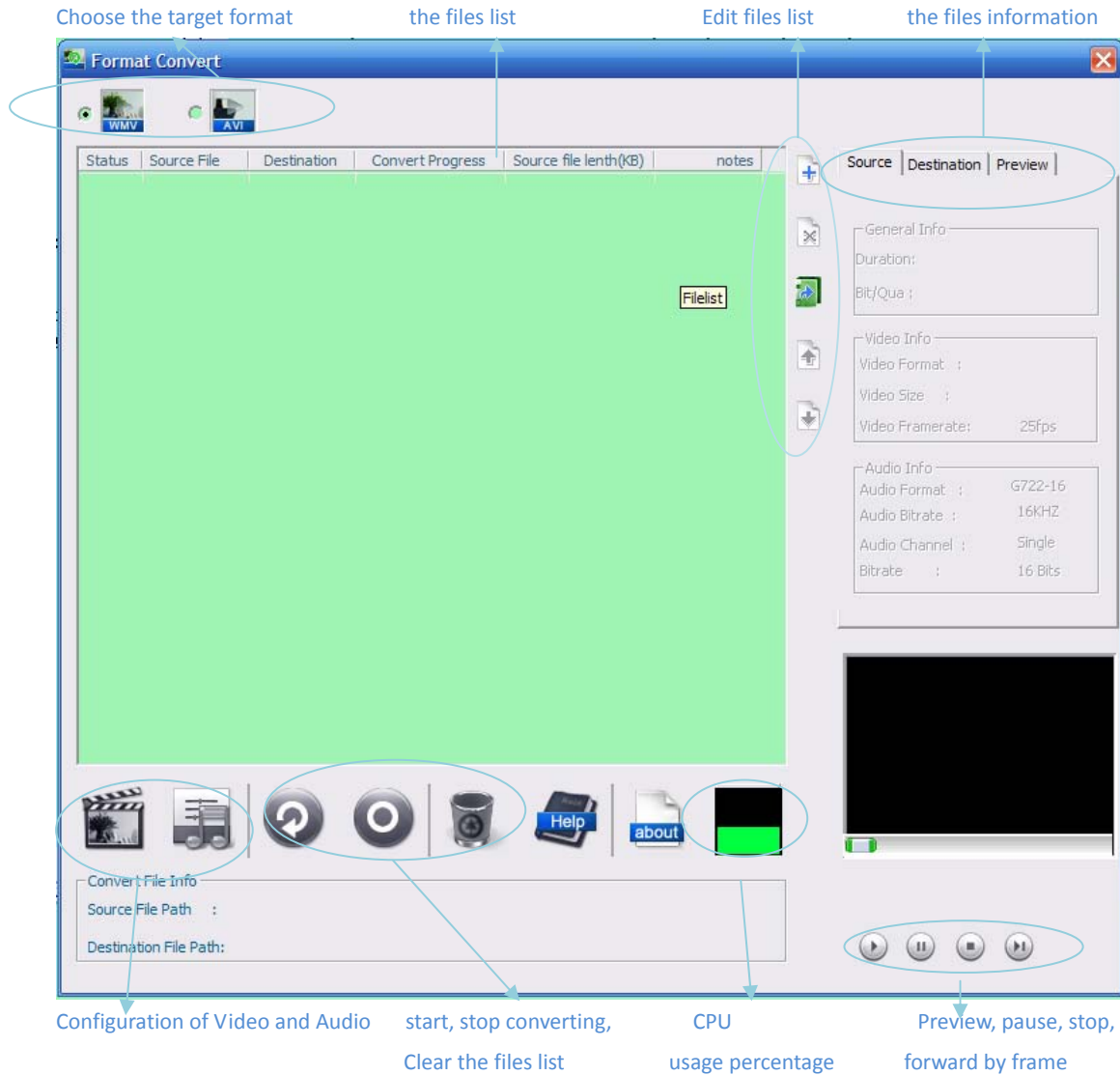


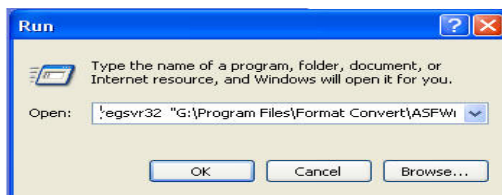
## Description of Format Convert

The format convert tool is developed based on DirectShow Windows Media Format technology, and has improved on interfaces and usage functions than Demo Version (based on the player plug-ins of our company, ffdshow). The main interface is shown as follows:



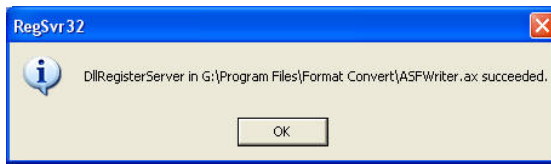
The main operation is as follows:

1. Because the tool is based on DirectShow Windows Media Format technology, before using the Format Covert, please install ffdshow, WMEncoder9 and ConvertFilters\_setup.exe plug-ins first; make sure filter has been registered. Input regsvr32 ASFWriter.ax(path) in the run box. Show as below:

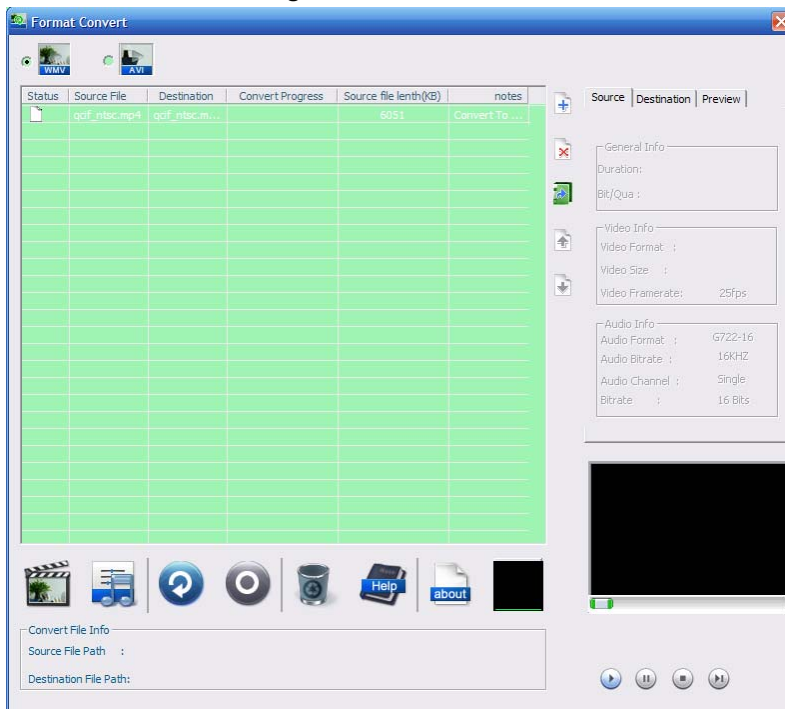


Click OK and the following message box will pop up to inform users that the Filter has been

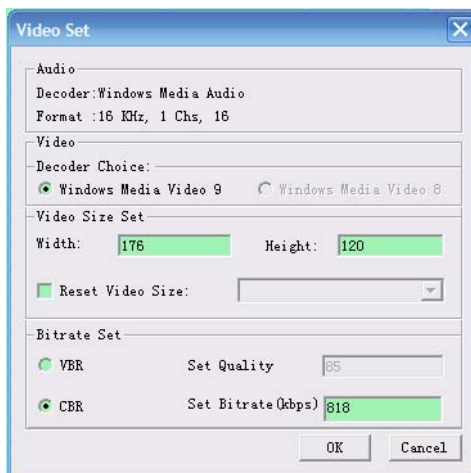
registered successfully!



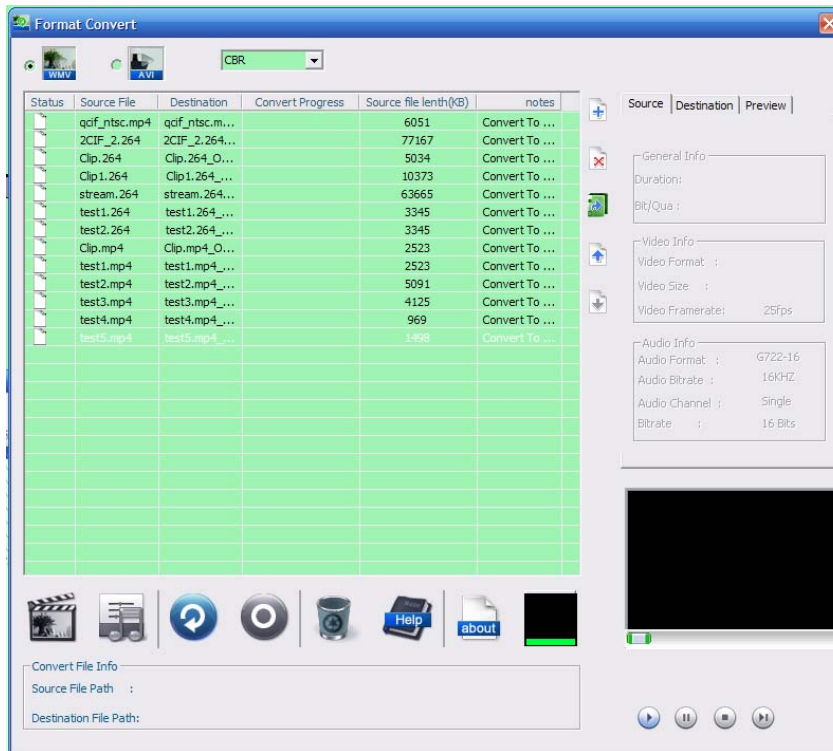
2. Right click the mouse in the file list box or click the edit file list to add a file. The tool will convert files into WMV file as default, if you need to convert files into AVI format, choose AVI on the top left corner.
3. Users can add one file or many files, but after editing file list, there is only one file in the file list, same effect as adding one file. Show as below:



You can set video and audio parameters, reset the video size and rate after conversion; or else it keeps the same as the original file.



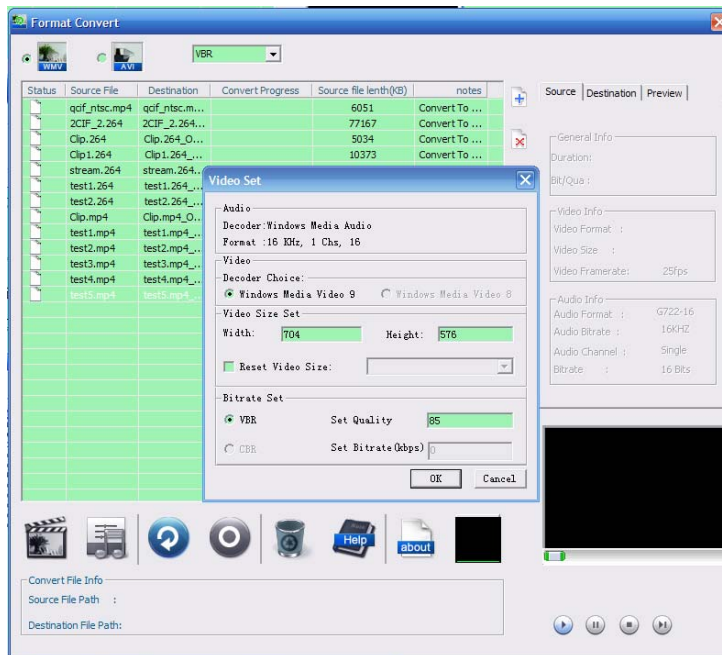
4. Adding multiple files is Show as below:



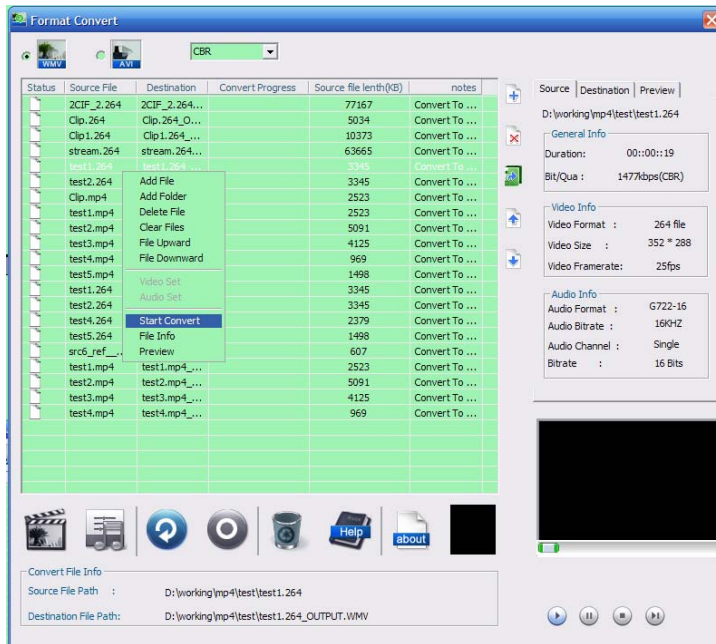
If convert into WMV format, there are two ways to convert, CBR and VBR, which can be chosen from the DropDownList on the right.

Using CBR way, the file will be converted with the original file size and rate.

Using VBR way, the size and quality of new size can be set, all the files have the same size and quality. (Show as below).

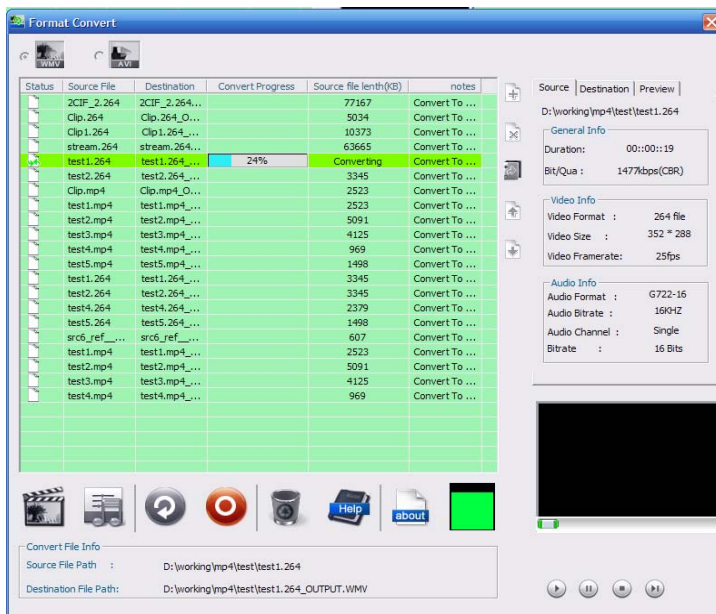


5. When there are more than one file in the list, users can change the conversion order, Show as below.

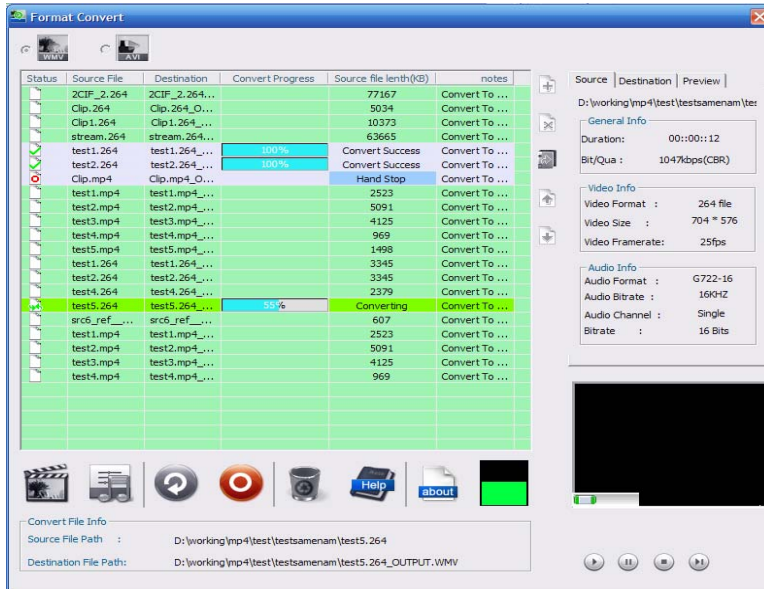


Choose a file that planned to be converted. At the same time, the file information appear on the File Information Dialog Box, and original file path and target file path appear on the state bar on the bottom. Right click to show the pop up menu, choose a operation, or choose a file, click the buttons on the main interface to do the operations.

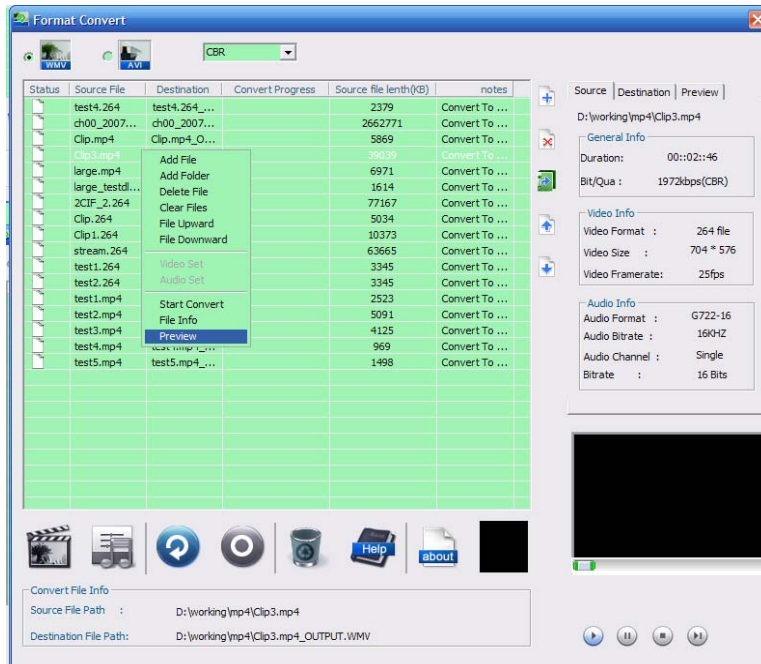
#### 6. Converting state is Show in the following picture:



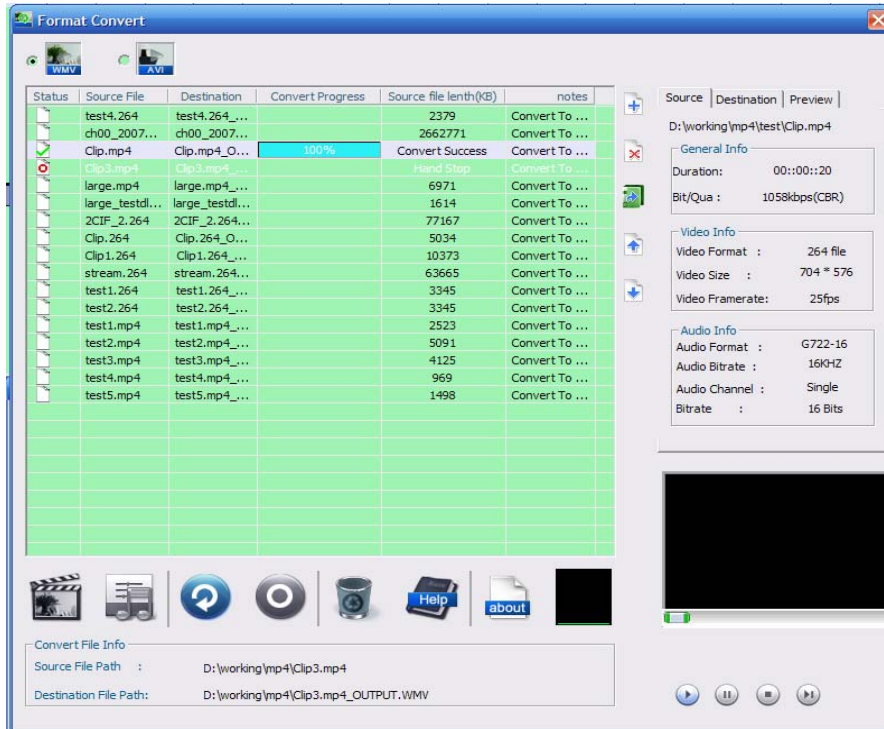
If user wants to stop one converting to convert another file, stop the current converting manually, and then choose another file using the same method. If don't change the order, the files will be converted one by one in the list order.



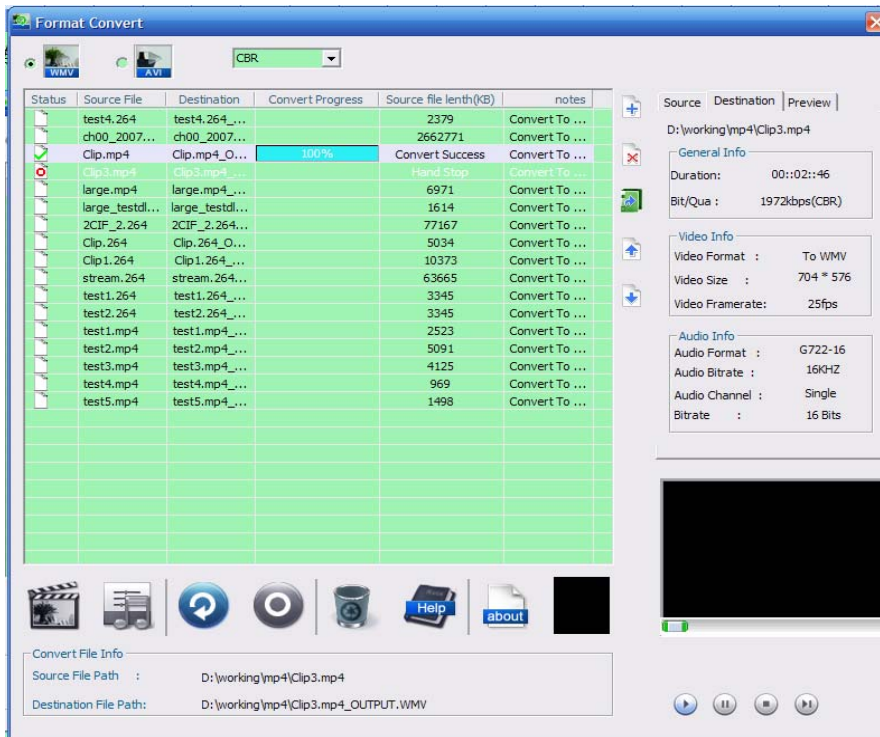
7. If preview the original file, choose the file, right click it and choose from the pop up menu, or click the buttons below the preview window. The file information will be shown in file information box. Converting and previewing can not be done at the same time. Show as below.



8. File information window shows the information of original file and new file. Show as below:  
The original file information:



The new file information:



9. AVI is much the same as WMV.

Note:

The tool does not support conversion of NASL and PAL at present.