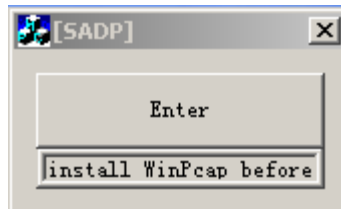


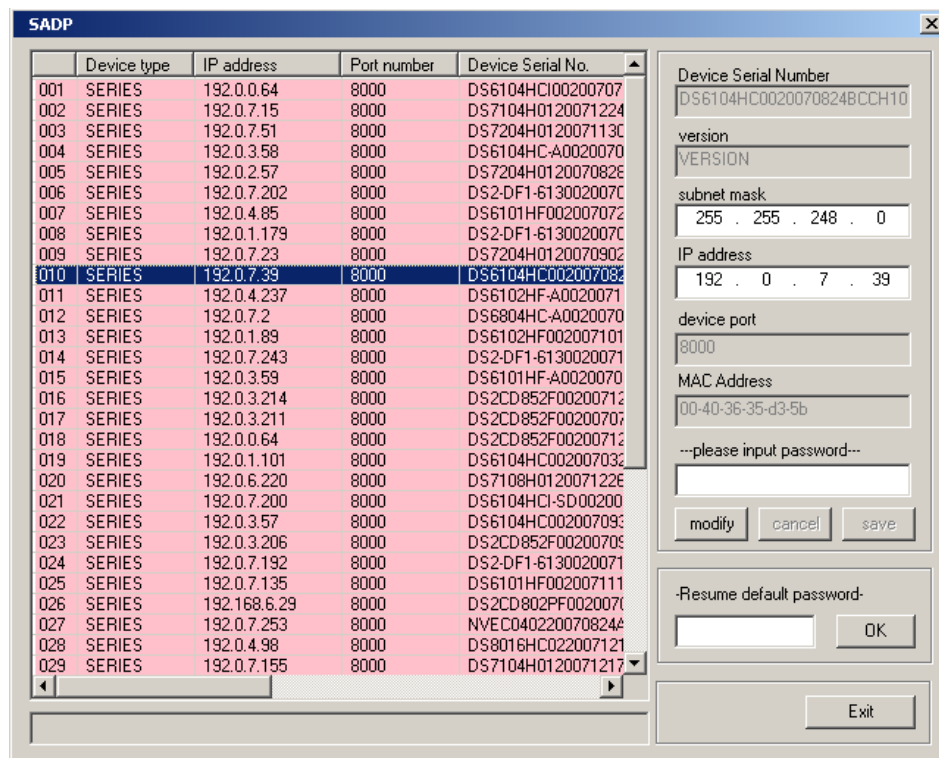
User manual of SADP

Step1: please install the WinPcap first.

Step2: double click the "sadpdlg" and you will see the picture 1 below. Just click "Enter" and you will enter into the SADP main interface, please see the picture 2.

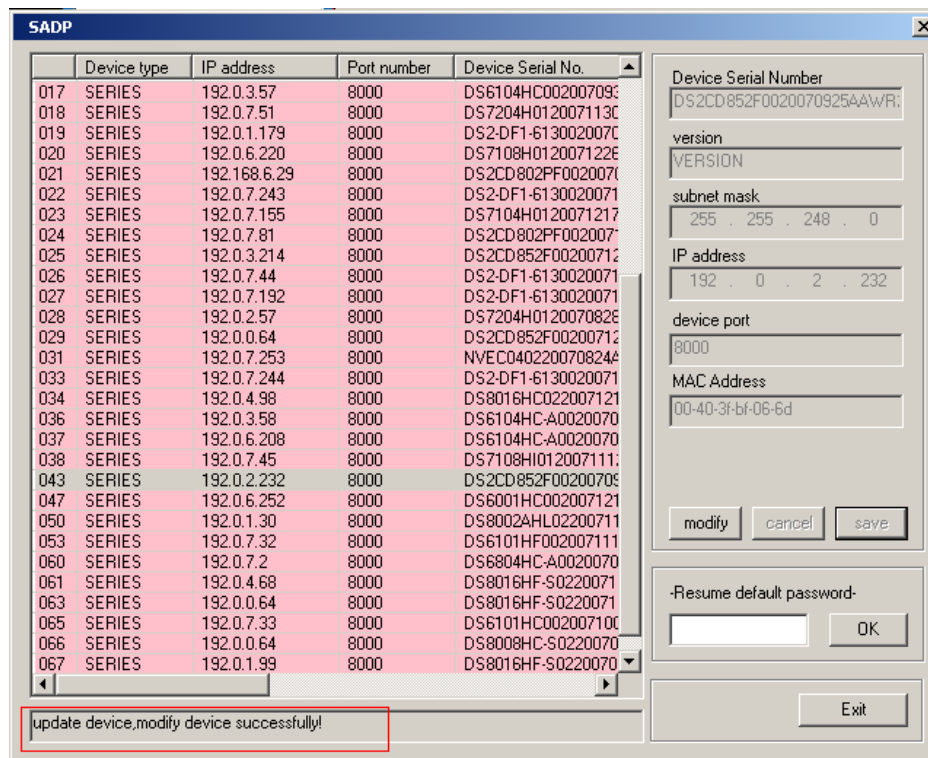


Picture 1

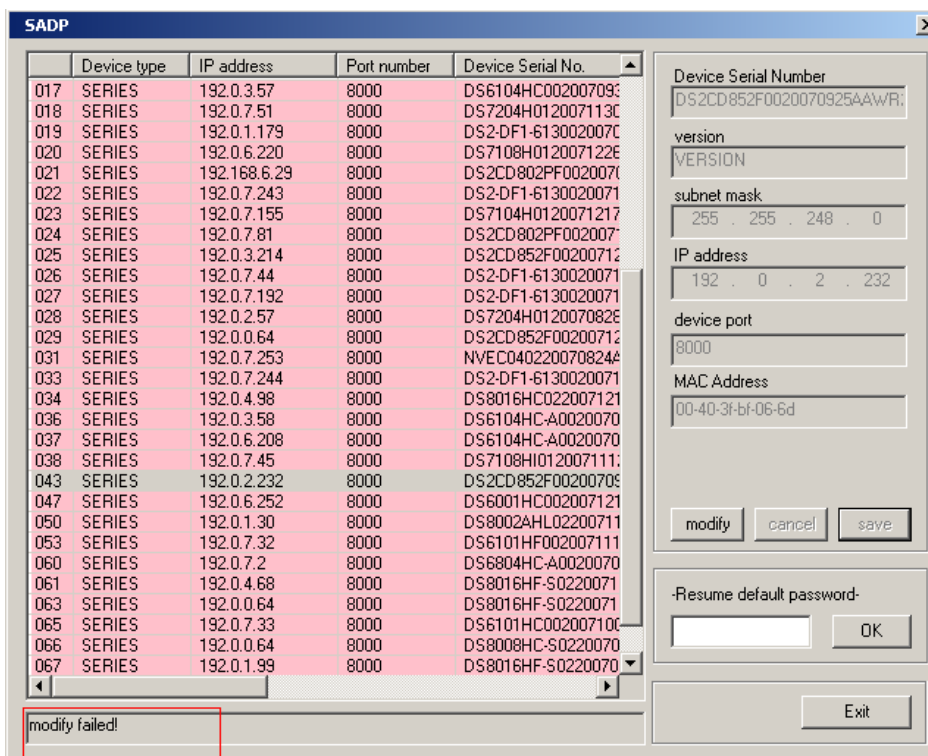


Picture 2

Step3: you can change the IP, mask IP and port in this software. just click "modify", then you can change the parameters. After that you need to input the password and click "save", if the password is correct, the successful information will be displayed, please see the picture 3. also if the password is wrong, the failed information will be displayed, please see the picture 4.



Picture 3



Picture 4