

**XtendLan**



# TC-V100

## Manual

---

# INDEX

1	TC-V100 Overview .....	1
2	Terminal User Guide .....	2
2.1	Applications .....	2
2.1.1	Network .....	2
2.1.2	Czech keyboard layout.....	6
2.1.3	Display .....	9
2.1.4	Sound .....	11
2.1.5	Cinfin CVUSB Client .....	12
2.1.6	User Password .....	15
2.1.7	Screen Lock .....	16
2.1.8	Network Diagnosis .....	17
2.1.9	Citrix Receiver.....	18
2.1.10	VMware View.....	19
2.1.11	ICA Global Settings.....	20
2.1.12	Date/Time .....	21
2.1.13	Save Data.....	22
2.1.14	CDMS Agent .....	22
2.2	Connection Manager .....	23
2.2.1	Remote Desktop.....	27
2.2.2	RDP Connection Guide.....	29
2.3	System Hotkey Instructions .....	35

# 1 TC-V100 Overview

TC-V100 cloud client is based on Marvell ARM CPU :

- Fan-less and ultra silent design frees the users from PC noises and creates a quiet and comfortable working environment for the users.
- With small and compact appearance, it can be placed vertically or mounted behind the monitor, saving more space on the desktop.
- Energy saving and environmental protection, ultra-low power consumption, saving the costs for the customers for a long term.
- Abundant cloud-computing clients ( RDP specially optimized, Citrix Receiver and VMware-view )
- Support CDMS management agent: centralized and convenient asset management, remote deployment and remote control.
- Automatic search for the terminal service system (CTSS) in LAN and zero configuration (automatically set up the connection item)
- Supports convenient module update: adopts TCPUP(system update tool) or FTP mode
- Supports automatic update of system: configure client IP (or DHCP) and server IP, and then restart to enter the auto-update mode.

# 2 Terminal User Guide

## 2.1 Applications

### 2.1.1 Network

#### 1. Using “Network”

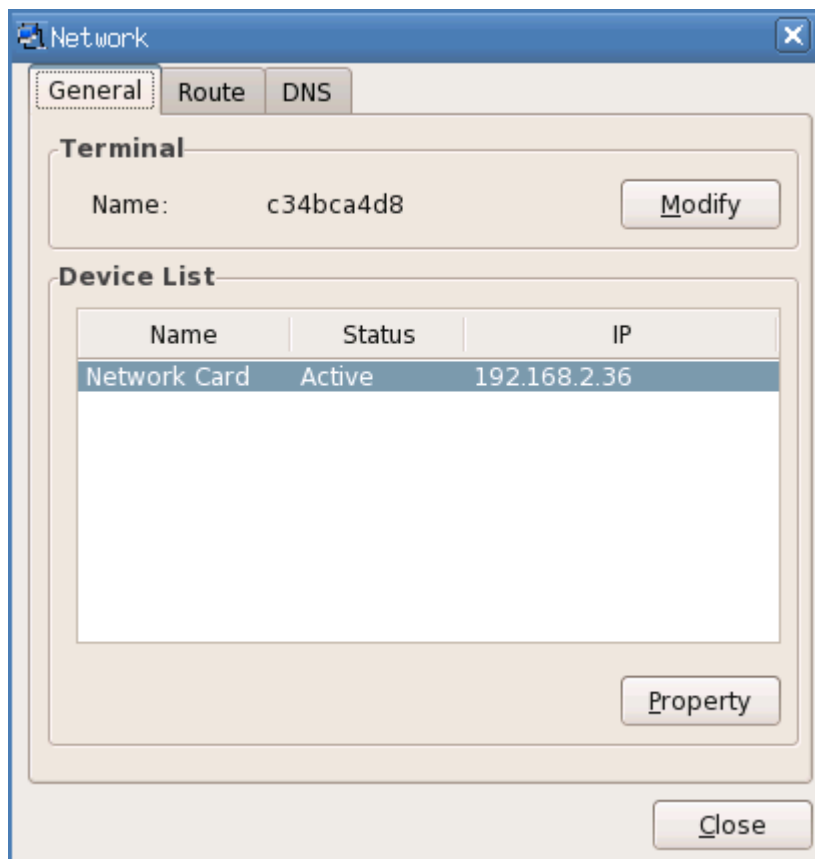
Through “Network” program, you can modify terminal name; activate, deactivate and configure the network card; add, edit and delete the router items, set the default router and set DNS, etc.

#### 2. Run “Network” program

Method:

Open control center ->Network.

The operating interface is as Picture 2-1-1 shows below:



Picture 2-1-1-1

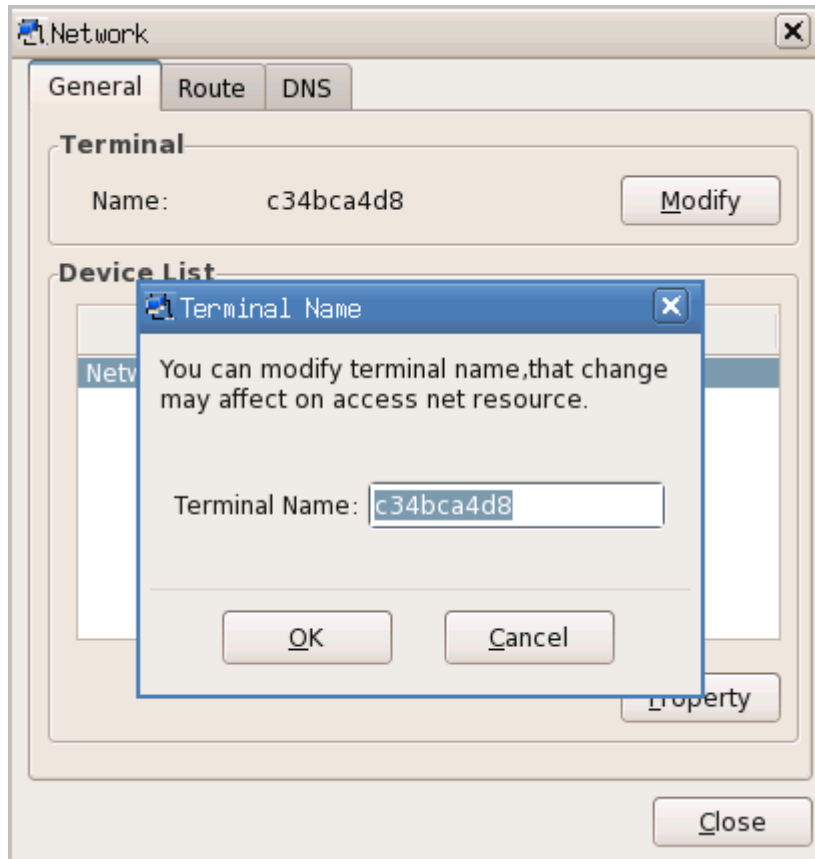
#### (1) General

This page lists the information of all network cards. In this page, you can modify the terminal

name, activate / deactivate and configure the network card.

- (a) Modify the terminal name

As the picture 2-1-1-2 shows below:



Picture 2-1-1-2

- (b) Activate the network card

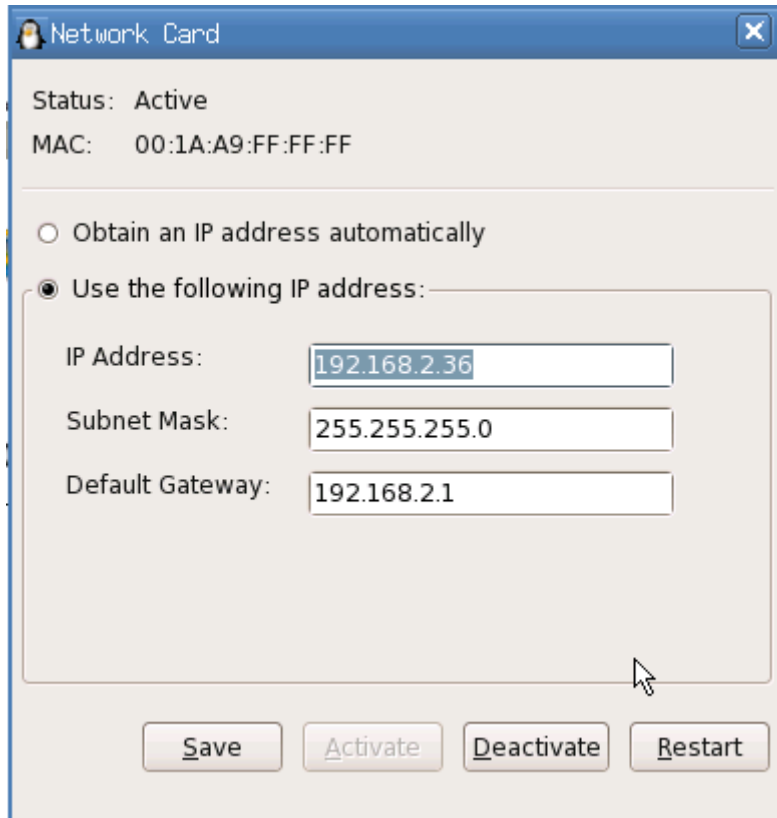
When the network card is inactive, please click "Activate" to activate the selected network card.

- (c) Deactivate the network card

Click "Deactivate" to deactivate the network card

- (d) Network card Property

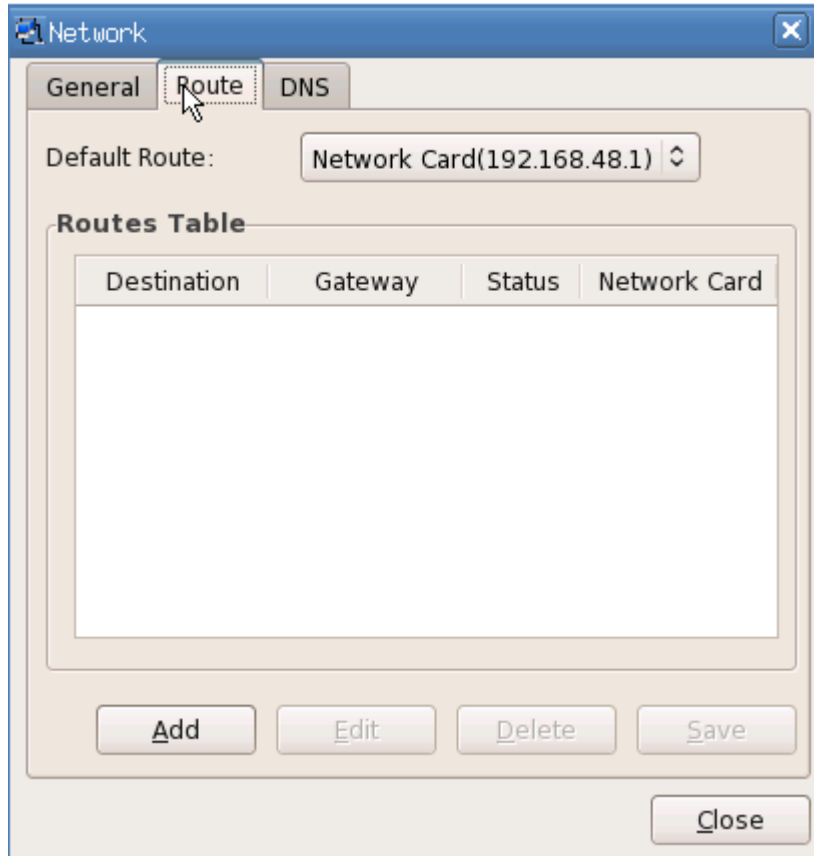
Select one network card and click "Property" button, the network card configuration window would pop up. As the picture 2-1-1-3 shows below:



Picture 2-1-1-3

## (2) Router

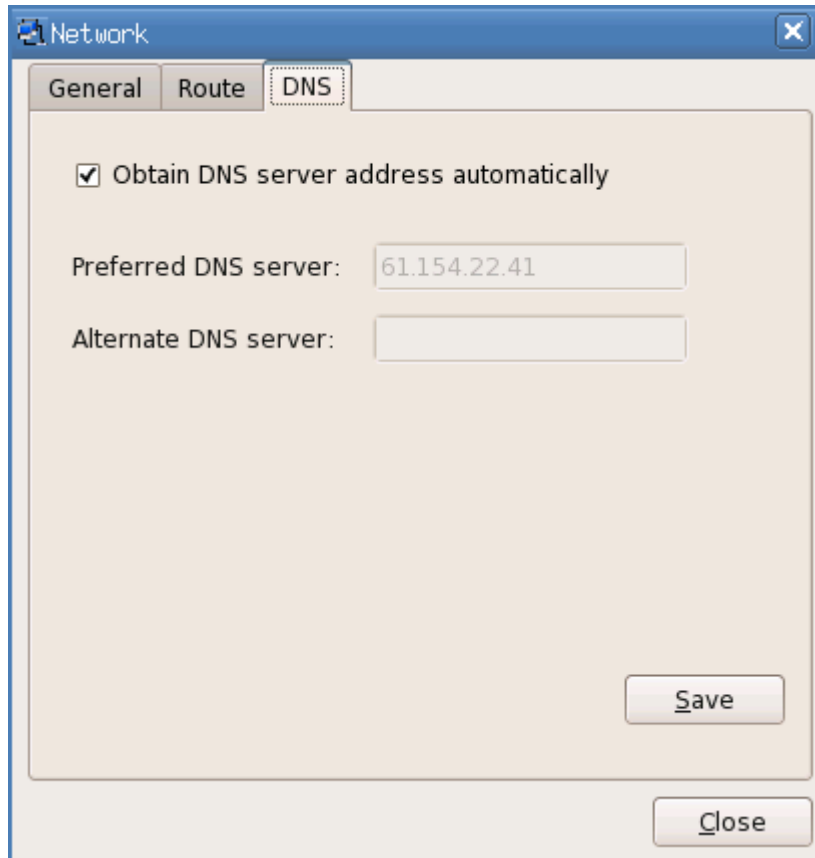
This page lists the router information of all the network cards. In this page, you can add, edit and delete the router, and set the default router. As the picture 2-1-1-4 shows below:



Picture 2-1-1-4

(3) DNS

You can set DNS in below page:



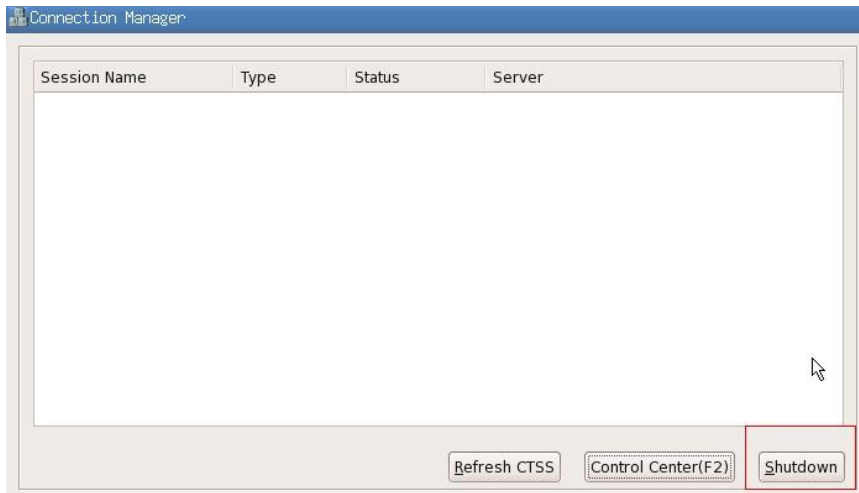
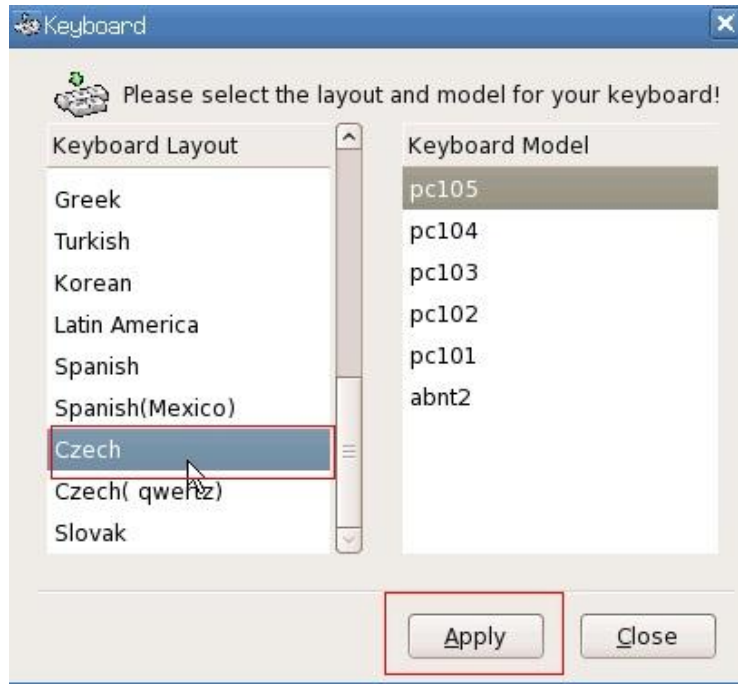
Picture 2-1-1-5

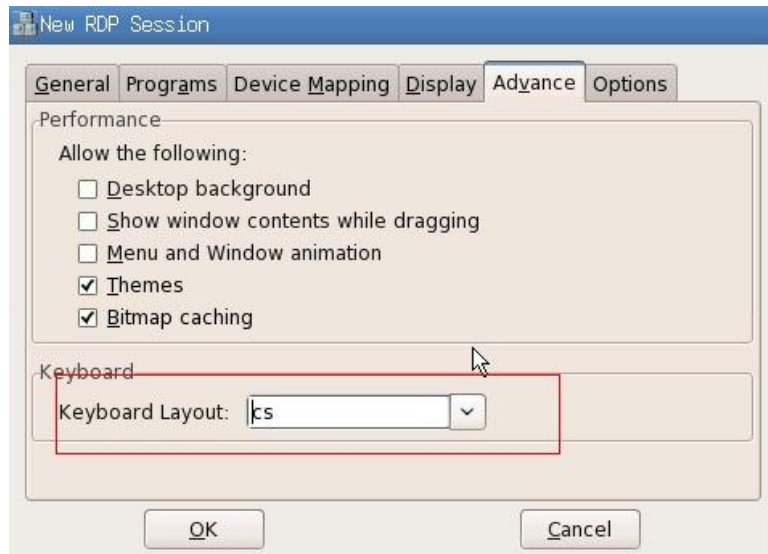
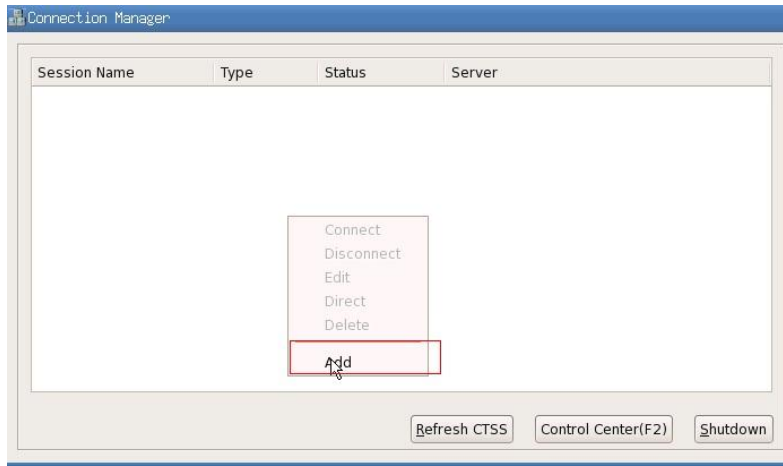
## 2.1.2 Czech keyboard layout

For right setting of the Czech keyboard layout do the settings according to following pictures. It is important to keep the restarts.









## 2.1.3 Display

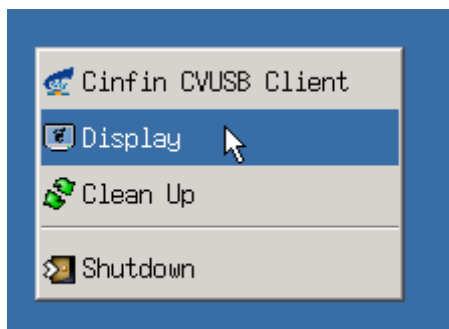
### 1. Using “Display”

In display property, you can customize the desktop wallpaper, screen saver and screen resolution. The display properties include: wallpaper, screen saver, screen resolution, refresh rate and color number, etc.

### 2. Run the display property

Method:

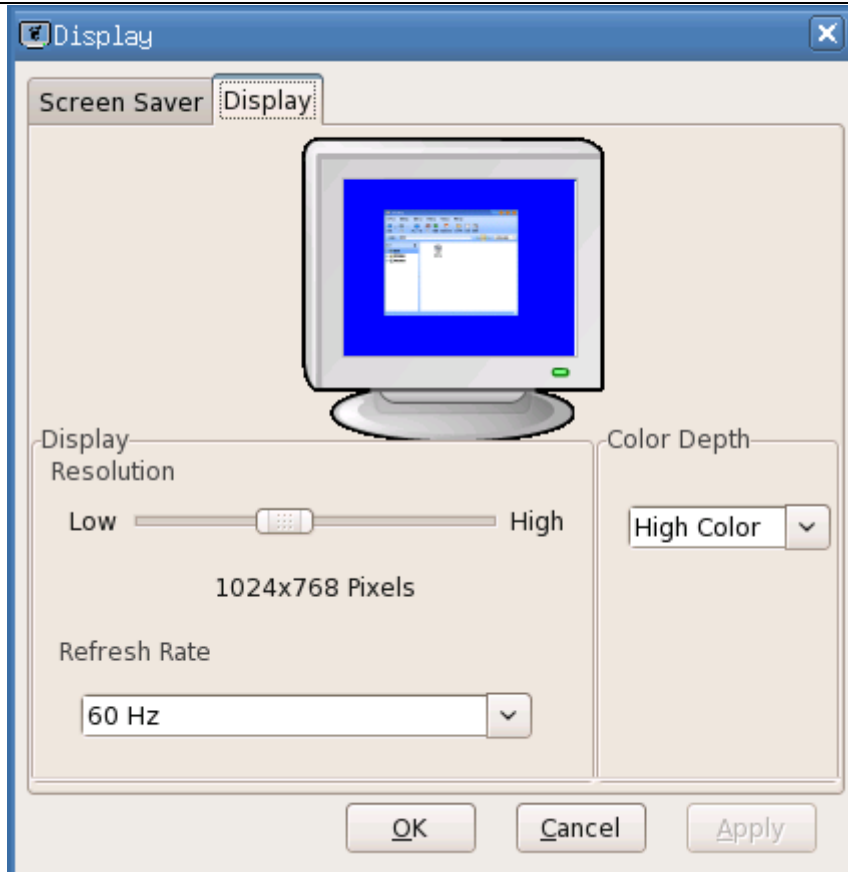
- (1) Right click on the desktop and select “Display”;



Picture 2-1-2-1

- (2) Enter control center->display.

The operating interface is as below:



Picture 2-1-2-2

3. Set the display property

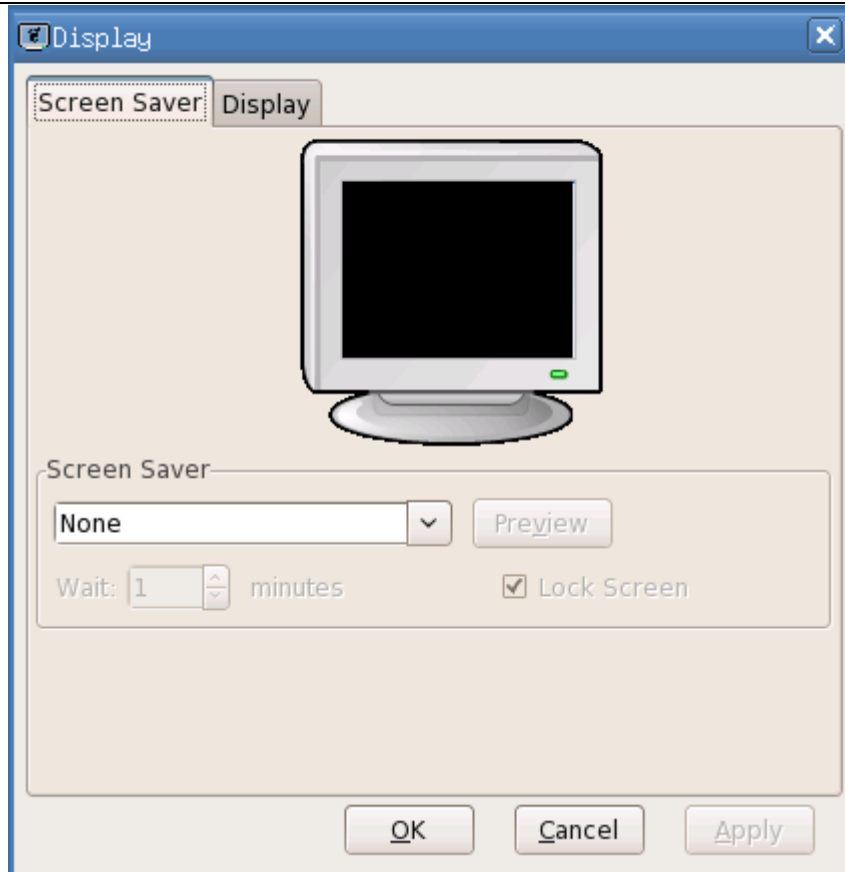
(1) Display setting

You can select the resolution and refresh rate;

The color depth can only be “High Color”

(2) Screen saver

In “Screen Saver” page, you can select and set the screen saver program for the terminal, as the picture shows below:



Picture 2-1-2-2

If you select “None” in “Screen Saver” bar, then all the other components in the bar would be gray; if you select one screen saver program, then you can preview it and set the wait time of the screen saver; if you need the screen saver program to lock the screen, please check “Lock Screen”.

## 2.1.4 Sound

1. Use “Sound” program

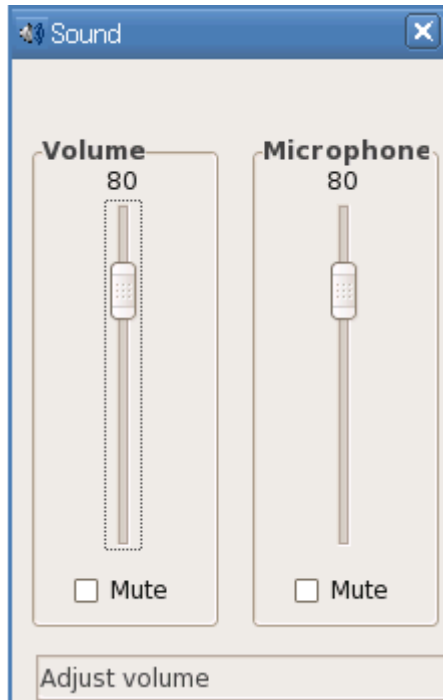
The “Sound” program is used to adjust the sound volume and microphone of the terminal system.

2. Run the “Sound” program

Method:

Enter “Control Center”->”Sound”

The operating interface is as below:



Picture 2-1-3-1

## 2.1.5 Cinfín CVUSB Client

1. Use “Cinfín CVUSB Client”

Map the USB device which is connected in local terminal to the server. Note: It can only be used with RDP protocol.

2. Run “Cinfín CVUSB Client”

Method:

Enter “Control Center”-> “Cinfín CVUSB Client”



Picture 2-1-4-1

### 3. Change Mode

In picture 4-1-4-1, click “Change Mode” to change USB device mode between “Local usage” and “Map usage”. As the picture shows below:

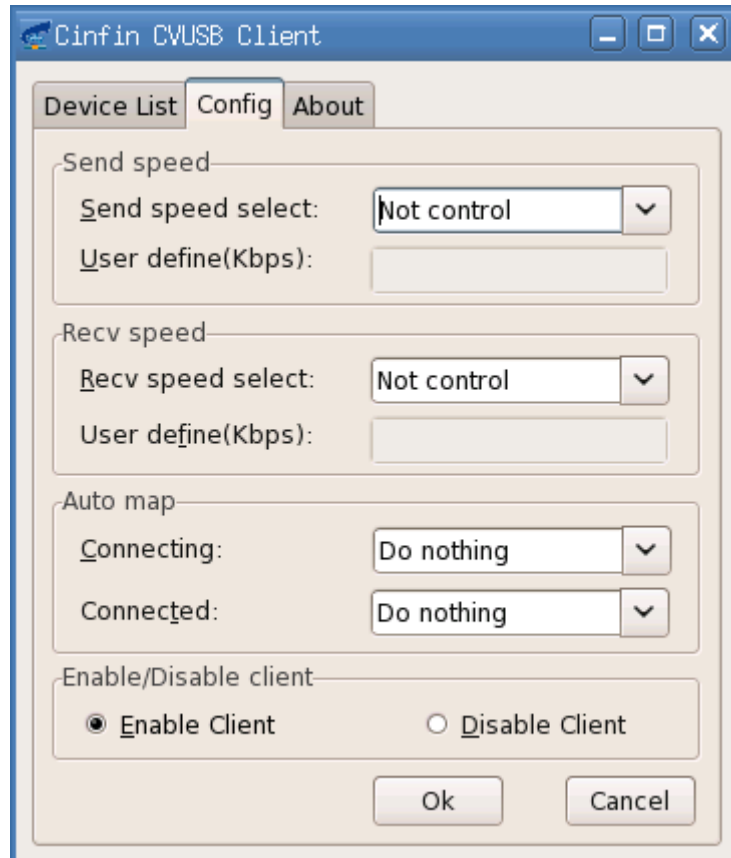


Picture 2-1-4-2

#### 4. Mapping Config

In the “Config” page of CVUSB Client, you can set “send speed”, “recv speed” “Auto map” and “Enable/Disable client”. As the picture shows below:





Picture 2-1-4-2

## 2.1.6 User Password

1. Use “User Password”

Through “User Password” program, you can set the user password which is the password of starting up / restarting the system, screen saver and system lock.

2. Run “User Password” program

Method:

Enter control center-> User Password

The operating interface is as the picture shows below:



Picture 2-1-5-1

## 2.1.7 Screen Lock

1. Use “Screen Lock”

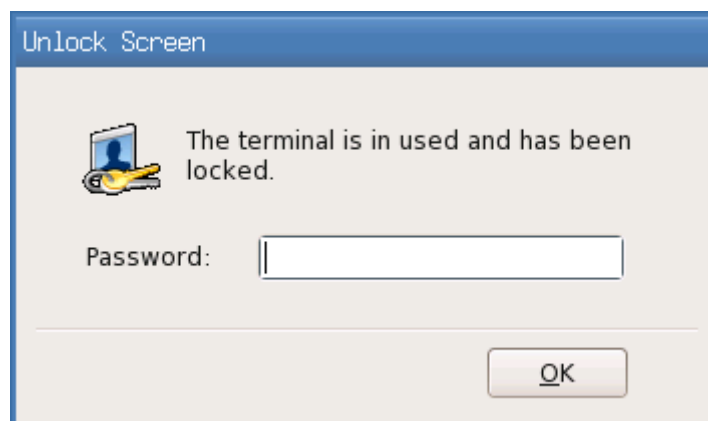
The “Screen Lock” program is used to lock the terminal screen when you do not use the terminal and ensure that the terminal would not be used by others.

2. Run the “Screen Lock” program

Method: Use the hotkey Ctrl+Alt+Del to open the screen lock program and lock the screen.

When the screen is locked, all the applications cannot be used and you can only return to the system interface by entering the correct unlock password.

The operating interface is as below:



Picture 2-1-6-1

If the password input is wrong, then it would pop up the prompt and keep the screen locked.

## 2.1.8 Network Diagnosis

1. Use “Network Diagnosis”

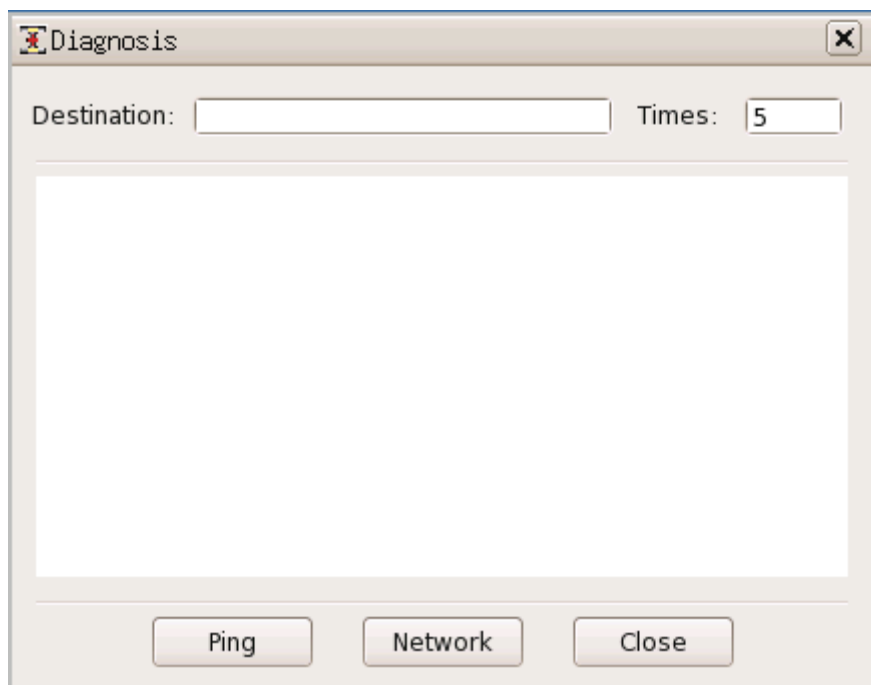
The network diagnosis program is used to check the network status.

2. Run the network diagnosis program

Method:

Enter control center->diagnosis

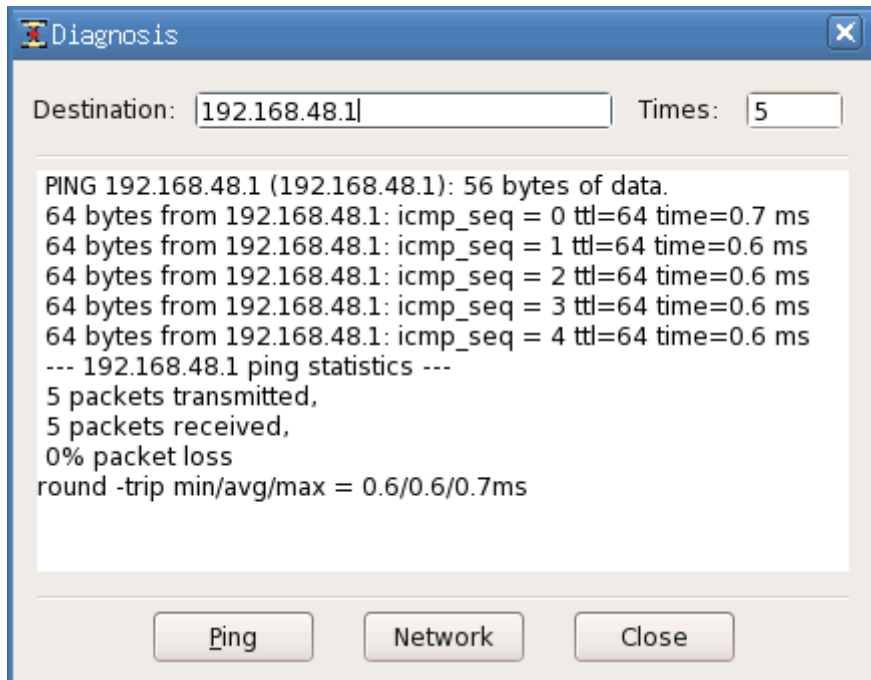
The operating interface is as below:



Picture 2-1-7-1

3. The destination of network diagnosis

When you ping a certain address, input the address in the destination bar and specify the ping times (which is 5 by default and 0 means infinite times). For example, enter the address 192.168.48.1 and click “ping” button. The operating interface is as below:



Picture 2-1-7-2

The destination bar cannot be blank, or it would pop up the prompt dialog box.

#### 4. Time limit of ping

When you ping some address, the content of time box must be number and should not be blank or it would pop up the prompt dialog box.

## 2.1.9 Citrix Receiver

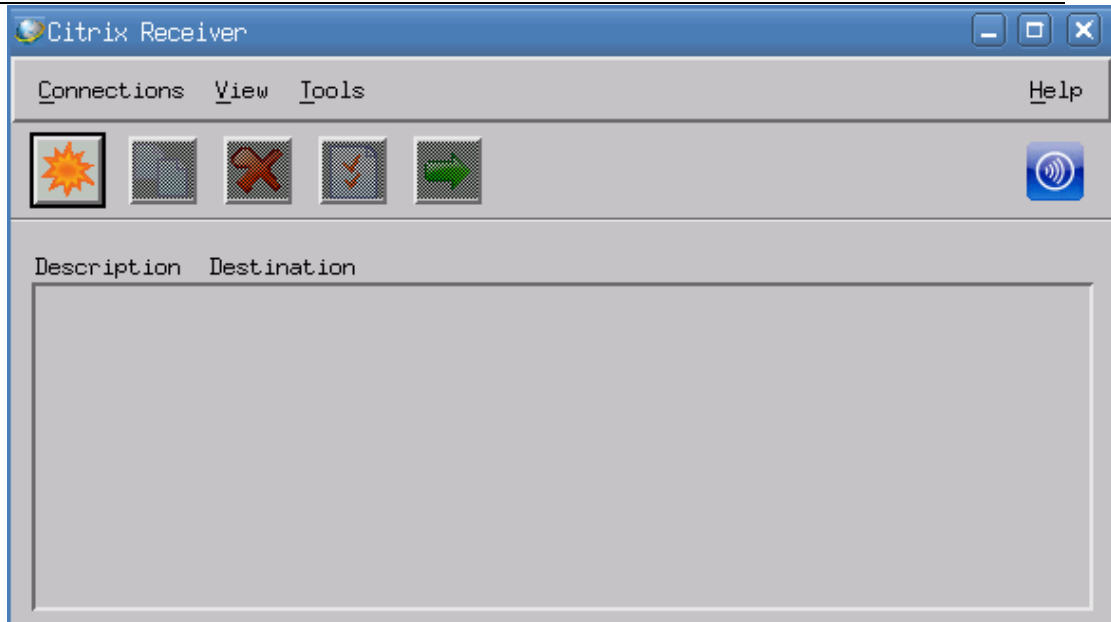
### 1. Use “Citrix Receiver”

“Citrix Receiver” is a Citrix cloud log on client and can connect to Citrix cloud server. It supports XenDesktop / XenApp

### 2. Run “Citrix Receiver” program

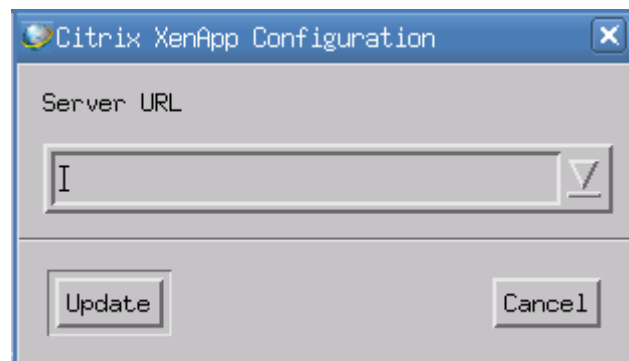
Enter “Control Center”-> Citrix Receiver

The operating interface is as below:



Picture 2-1-8-1

3. Connection
  - (a) Select “View” → “Citrix XenApp View”
  - (b) Enter the server URL
  - (c) Enter the username, password and domain.



Picture 2-1-8-2

## 2.1.10 VMware View

1. Use “VMware View”

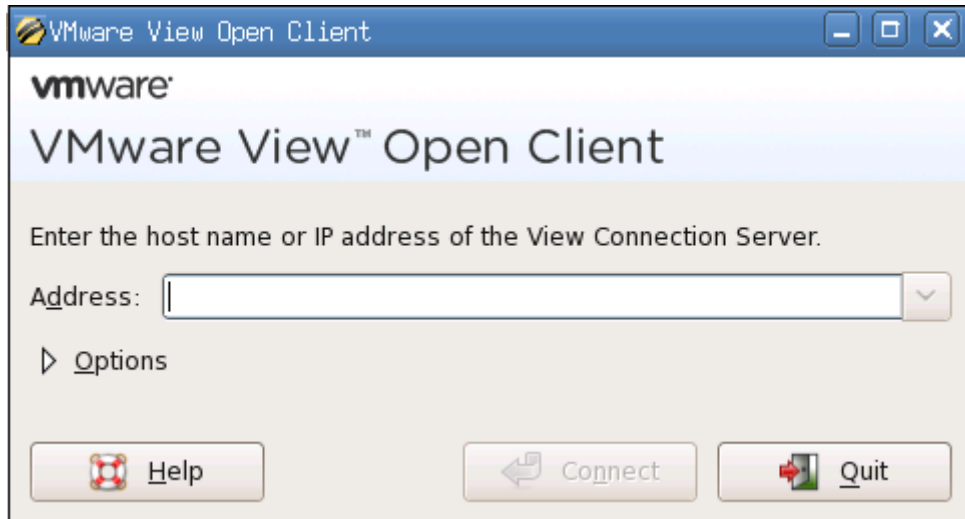
“VMware View” is the VMware cloud log on client and can connect to VMware cloud server.

Currently it only supports RDP protocol and does not support PCOIP

2. Run “VMware View” program

Enter control center-> VMware View

The operating interface is as the picture shows below:



Picture 2-1-9-1 VMware View

## 2.1.11 ICA Global Settings

1. Use “ICA Global Settings”

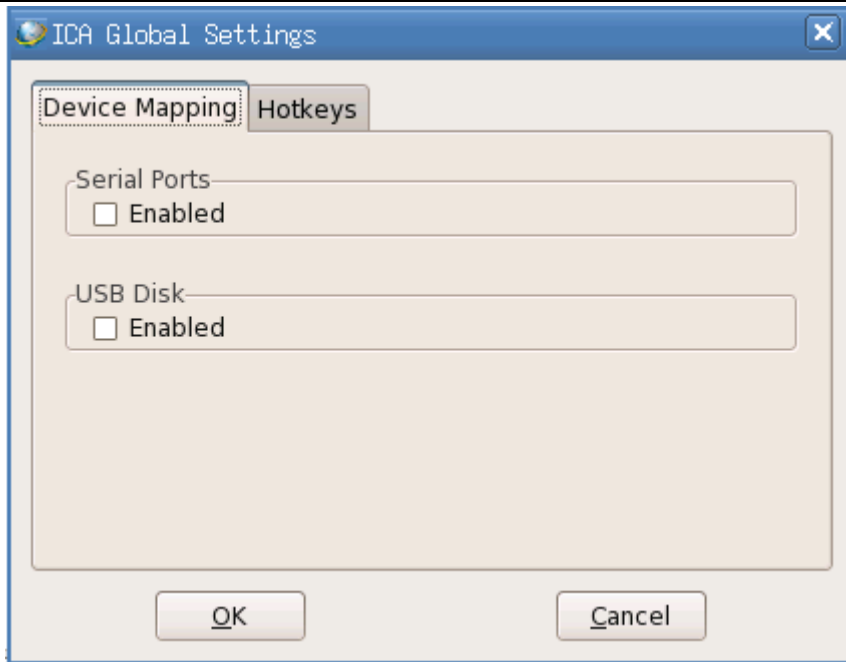
It is the global setting specified to ICA connections.

2. Run “ICA Global Settings”

Enter control center->ICA Global Settings

3. Setting

(1) Device Mapping, as the picture shows below:



Picture 2-1-10-1

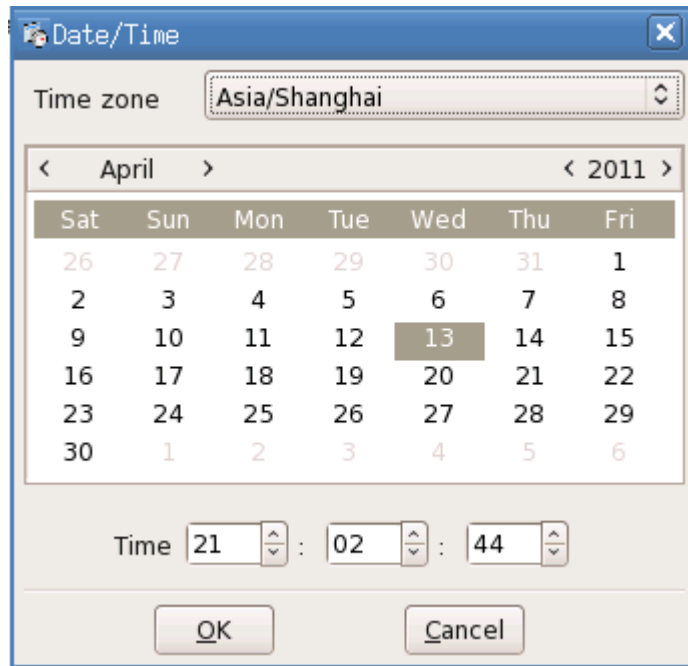
(2) Hotkey configuration, as the picture shows below:



Picture 2-1-10-2

## 2.1.12 Date/Time

1. Use "Date / time"  
You can set the time zone and your local date and time information in this program.
2. Run "Date / Time"  
Enter Control Center->Date / Time  
The operating interface is as below:



Picture 2-1-11-

### 2.1.13 Save Data

1. Use “Save Data”

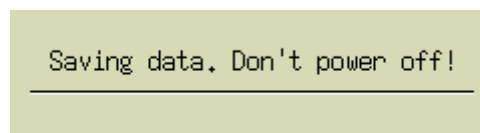
The “Save Data” program can save the system settings and even if it is powered off illegally, the settings can be saved.

2. Run “Save Data” program

Method:

- (1) Use the hotkey **Shift+F2**;
- (2) Enter control center->save data

The operating interface is as below:



Picture 2-1-12-1

### 2.1.14 CDMS Agent

1. Use “CDMS Agent”

In “CDMS Agent” program, you can set whether the terminal can be managed by the



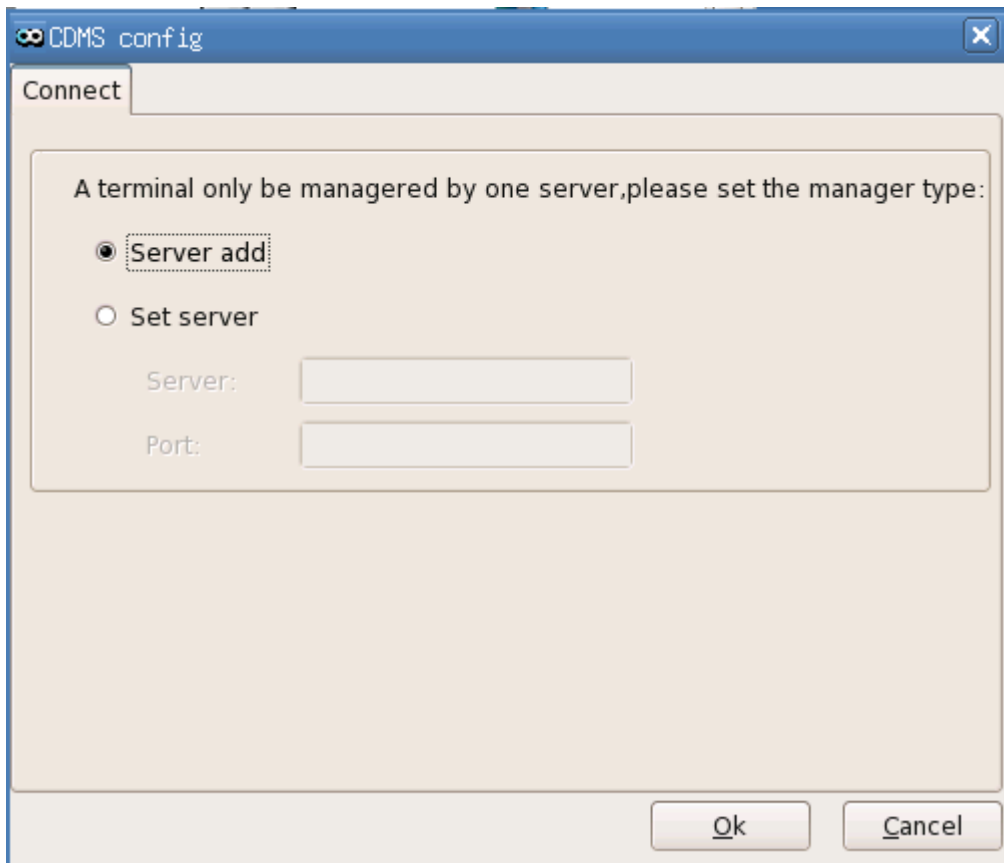
management server or specify the management server.

## 2. Run CDMS Agent

Method:

Enter control center->CDMS Agent

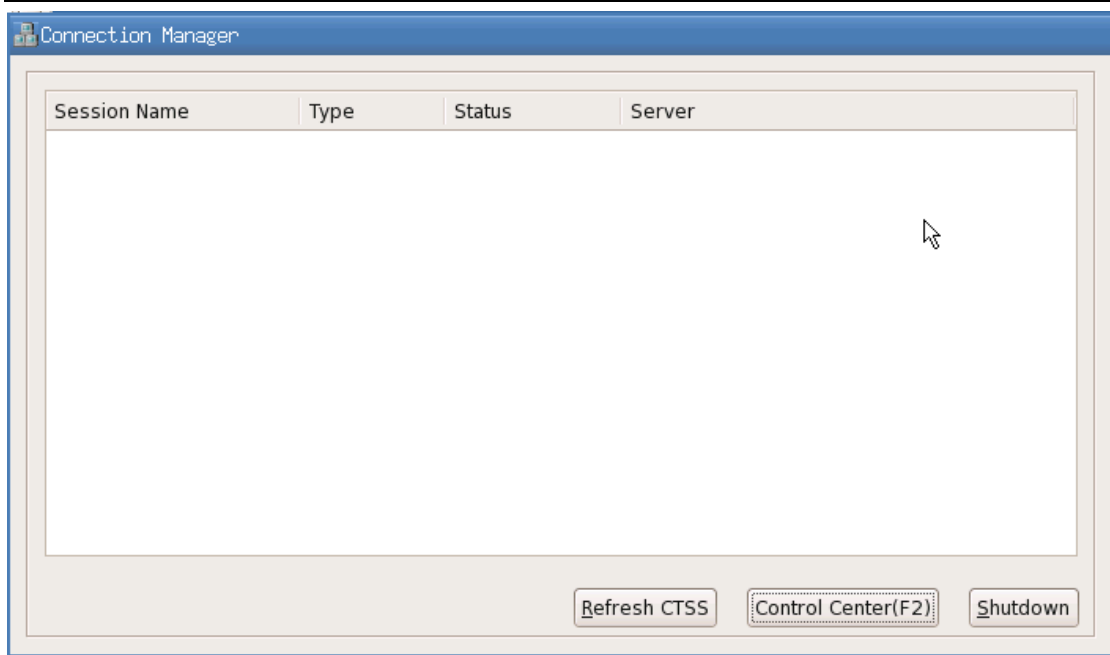
The operating interface is as below:



Picture 2-1-13-1

## 2.2 Connection Manager

Enter control center-> connection manager, as the picture shows below:



Picture 2-2-1

1. There is a list box in this interface which shows the connection items added by users. Each connection item has 4 sub-items:

- (1) Session name

Name of the connection added by the users

- (2) Type

It is the type of the connection item added by users, such as RDP, ICA, etc.

- (3) Status

When connected, it shows “connected” and when not connected, it would show nothing.

- (4) Server

It shows the name of the server or application the users want to connect to.

2. Under the list box, there are these buttons: “Refresh CTSS”, “Control Center(F2)” and “Shutdown”

The functions of these buttons are as below:

- (1) Refresh CTSS

Manually refresh and search for the CTSS server in LAN. When searched, the CTSS server would be added to the connection manager automatically.

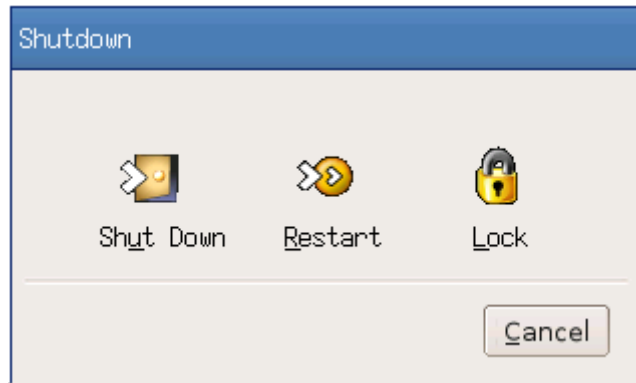
- (2) Control Center

Click the “Control Center” button and the “control center” interface would pop up, where you can do the settings.

### (3) Shutdown

After you click “Shutdown” button, the below interface would pop up which includes:

Shutdown, Restart and Lock, as the picture shows below:

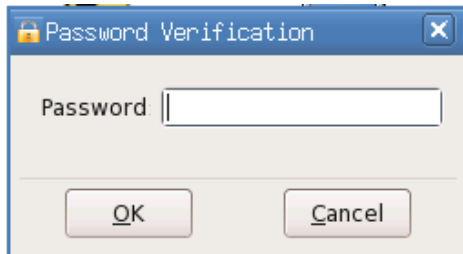


Picture 2-2-2

#### 2.1.14 Security

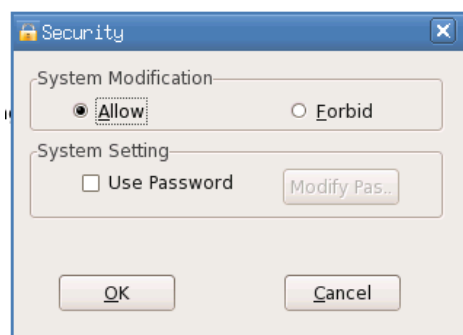
Go to the “control Center” and double click “Security” icon to run the program.

Below interface would pop up.



The initial password is blank, so just click “OK” button to enter the program.

Then you’ ll see its operating interface as below:

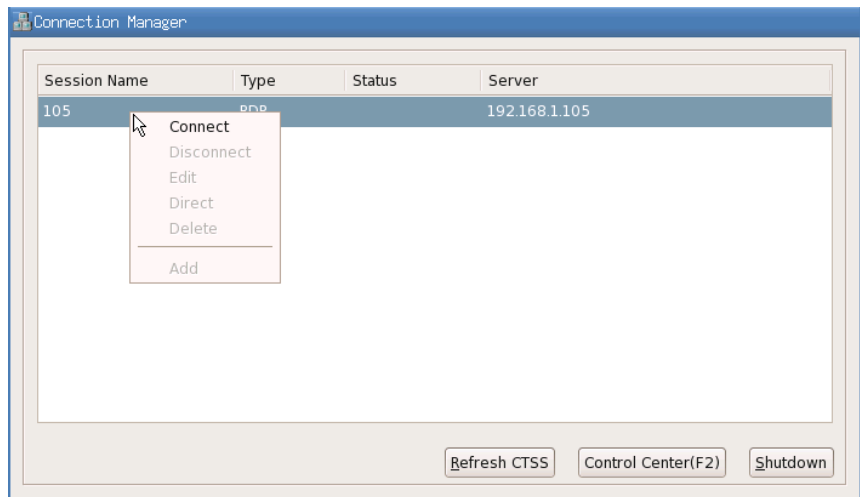
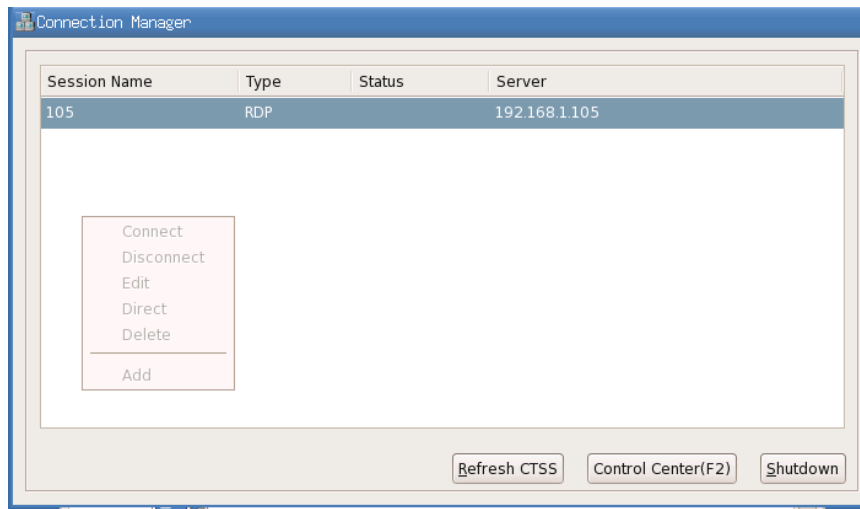


In “System Modification” frame, you can see two options “Allow” and “Forbid” .

If you select “Allow” , then you can access and configure all the programs in control center and also the connection manager.

If you select “Forbit” , then:

- (1) In connection manager, you cannot add, edit or delete the connection items, and you can only connect the exiting connection items, as the pictures blow:



- (2) In control center:

Some of the programs are forbidden to access and others are still allowed to access.

By default, when you select “Forbid” in security program, below programs are forbidden to access: Network, cloud client, cloud server, CDMS agent, Date/Time, ica global settings, services, startup and remote desktop.

If you want to add more programs into this protection mode or remove some programs out of this protection mode, please inform us and then we' ll send you a new system version.



## 2.2.1 Remote Desktop

1. Use "Remote Desktop"

3. The remote desktop program is used for the settings of some parameters related with the remote desktop when the terminal is used as the server side of the remote desktop (VNC).

4. Include: Whether allow the remote monitoring, select remote check or control and some security parameter settings of the terminal when the remote host connects the terminal desktop.

2. Run "Remote Desktop" program

Open control center and select "Remote Desktop"

5. The operating interface is as the picture shows below:



6.

Configuration Interface of Remote Desktop

### 3. Remote Desktop client

For the terminal is used as the server side of the remote desktop, the users only need to install the client program (VNC viewer) of the remote desktop on some client machine to use this client program to connect to the terminal desktop through specifying terminal IP address.

Remark: The version of the client program needs to be 3.3.4 or higher to support the function of checking the mouse status of the terminal.

### 4. Sharing

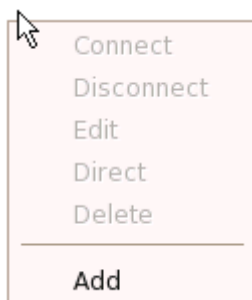
Select whether to allow the remote host to monitor the terminal desktop. If it is checked, you can configure the remote monitor or control and the parameters in the security bar. Or the other configuration items would be gray. As the picture shows below:



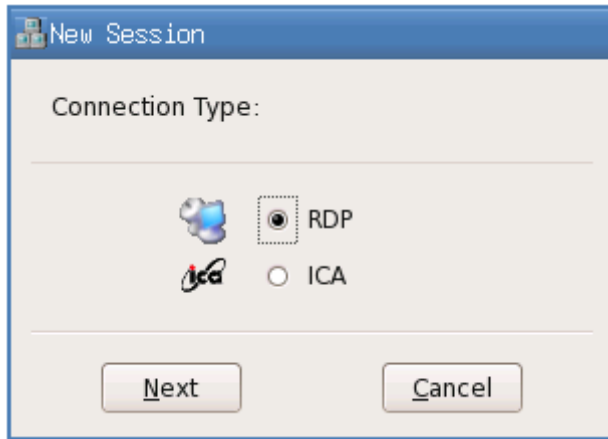
Do not allow the remote control

## 2.2.2 RDP Connection Guide

Right click on the connection manager->select "add"-> select "RDP" connection type->click "Next", and you would enter the interface of RDP connection settings.



Picture 2-2-1-1



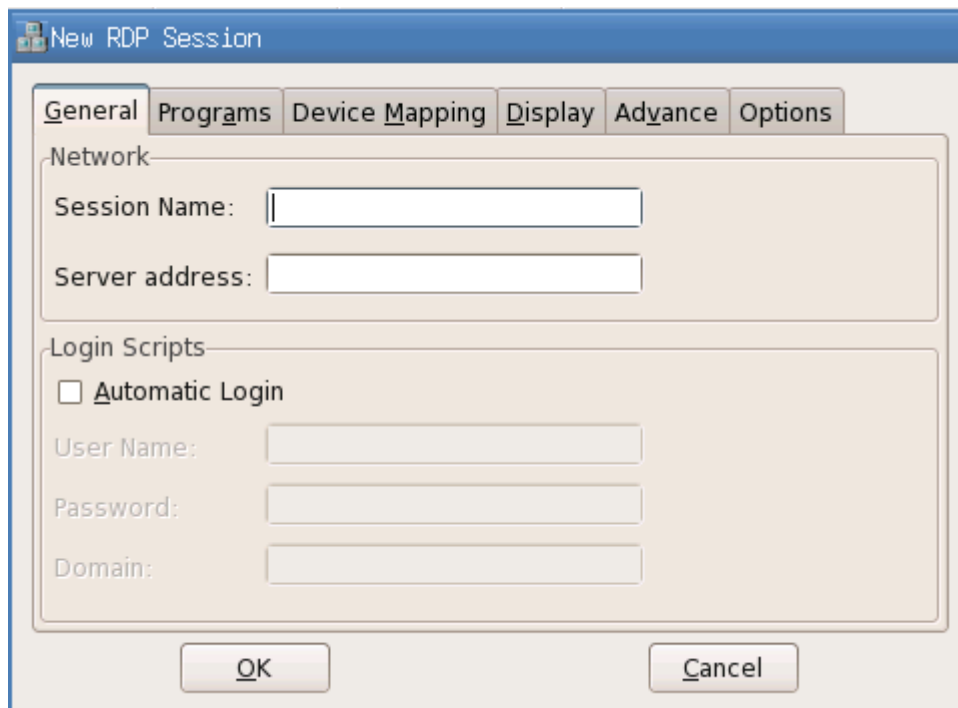
Picture 2-2-1-2

### 1. General

In this property page, you need to enter the name of the new session in the “Session Name” bar and enter the IP address or name of the server in “Server address” bar. The session name should not be the same with other RDP connections.

Check “Automatic Login” and you can enter the username, password and domain. When the system starts up, it would automatically connect this RDP session.

As the picture shows below:



Picture 2-2-1-3

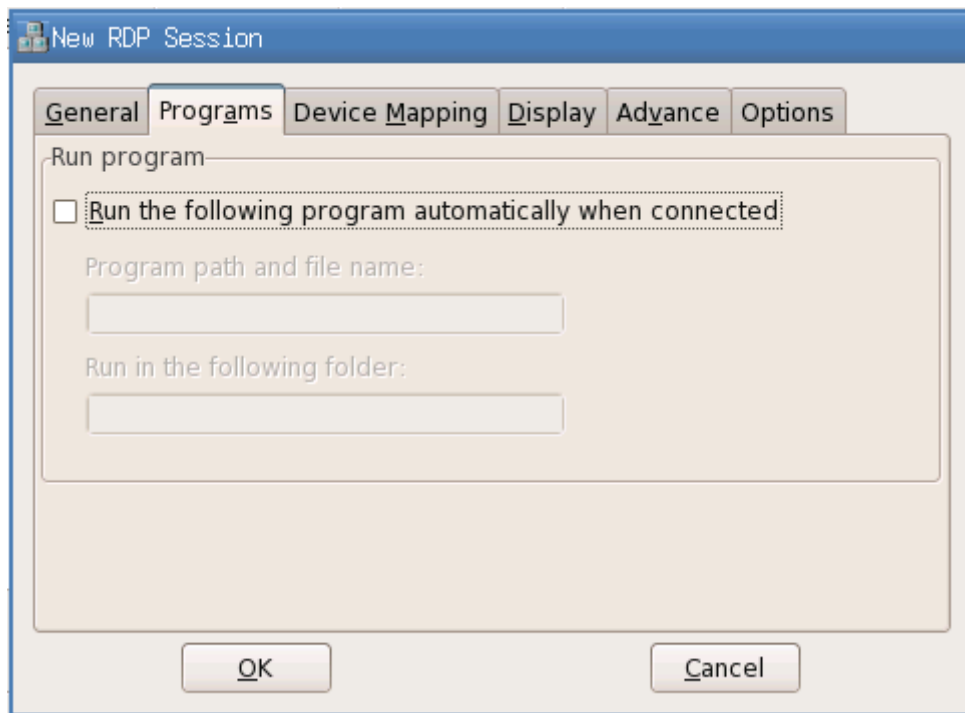


【 Note: The session name should not contain the special characters. Some Windows 2000/2003 Server versions would not support the automatic log on to the server considering the security.】

## 2. Programs

Check “Run the following program automatically when connected” and it would log on the server in application program mode. You need to enter the program path and file name and you can select to enter the name of the folder where the program exists.

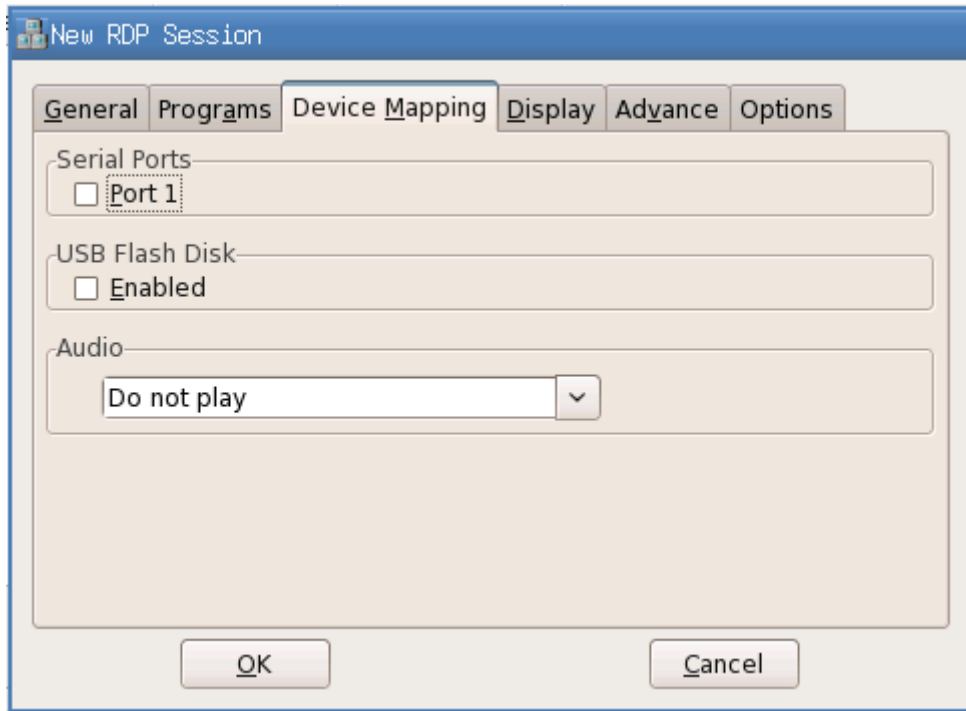
As the picture shows below:



Picture 2-2-1-4

## 3. Device Mapping

In this property page, you can set the audio property: “Bring to this terminal”, “Do not play”, “Leave at remote computer”. As the picture shows below:



Picture 2-2-1-5

#### 4. Display

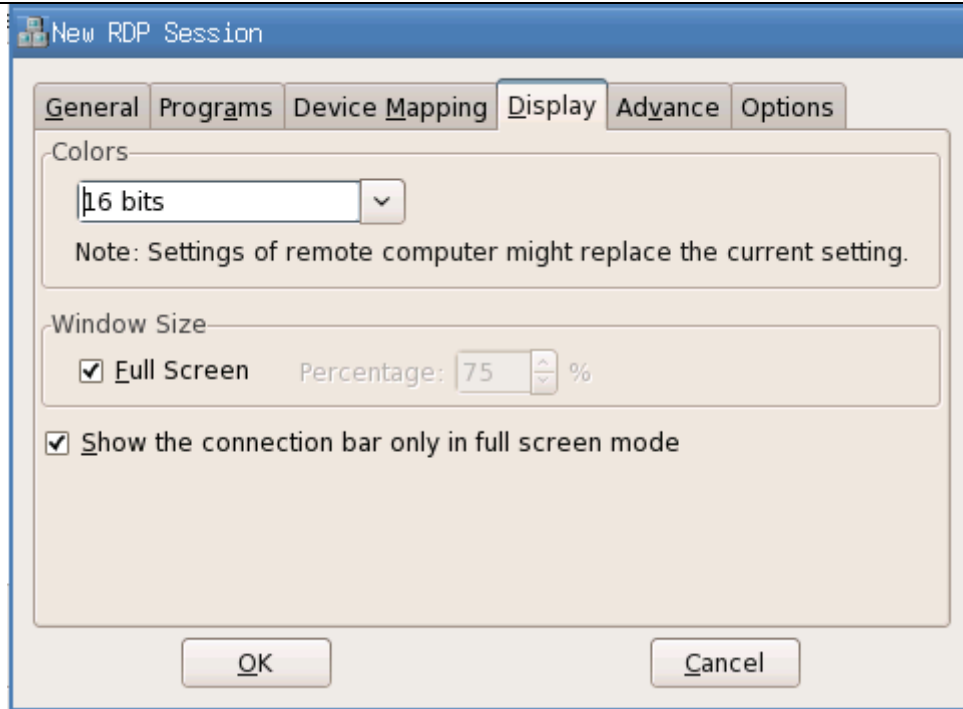
In this property page, you can set the “Colors”, “Window Size” and connection bar of the RDP session.

There are two options “8 bit” and “16 bit” in “Colors” setting.

If the full screen option is not checked, you can set the window size to 60%-90%

If you check “Show the connection bar only in full screen mode”, then when RDP session is in full screen, there would be a connection bar on the top of the screen. Users can use this connection bar to minimize or close the RDP window.

As the picture shows below:



Picture 2-2-1-6

## 5. Advance

In this property page, you can set the advanced settings and keyboard layout of the RDP session.

If the “Desktop background” option is checked, then when RDP session is successfully connected, it would show the desktop background set by the user on the server and you can modify the desktop background which needs the server support.

If the option “Show window contents while dragging” is checked, then after the RDP session is successfully connected, it would show the window content when the user drags the window. This option needs the server to support.

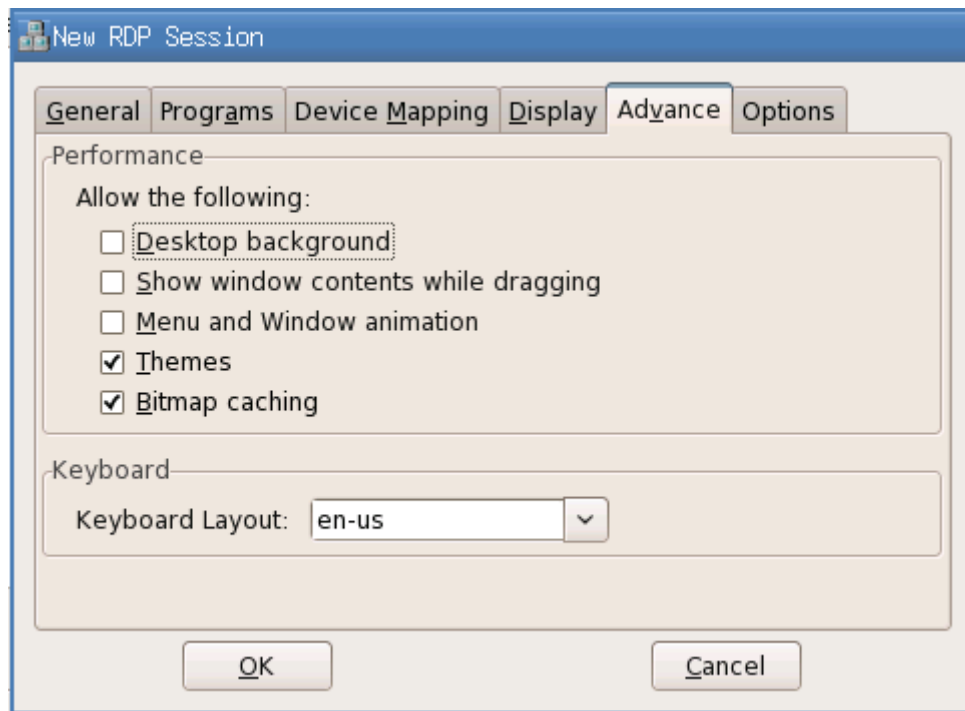
If the option “Menu and Window animation” is checked, then after RDP session is successfully connected, it would show in animation mode when you click the menu and minimize/maximize the window. This option needs the server to support.

The “Themes” option allows RDP session has the same theme settings with the server and you can modify the theme settings.

If the option “Bitmap caching” is checked, then it would open the bitmap caching area when the client connects to the server via RDP. Starting this option would improve the performance (especially when the network bandwidth is low) and reduce the network bandwidth usage.

In “Keyboard” option, you can set the keyboard layout of the terminal.

As the picture shows below:



Picture 2-2-1-7

## 6. Options

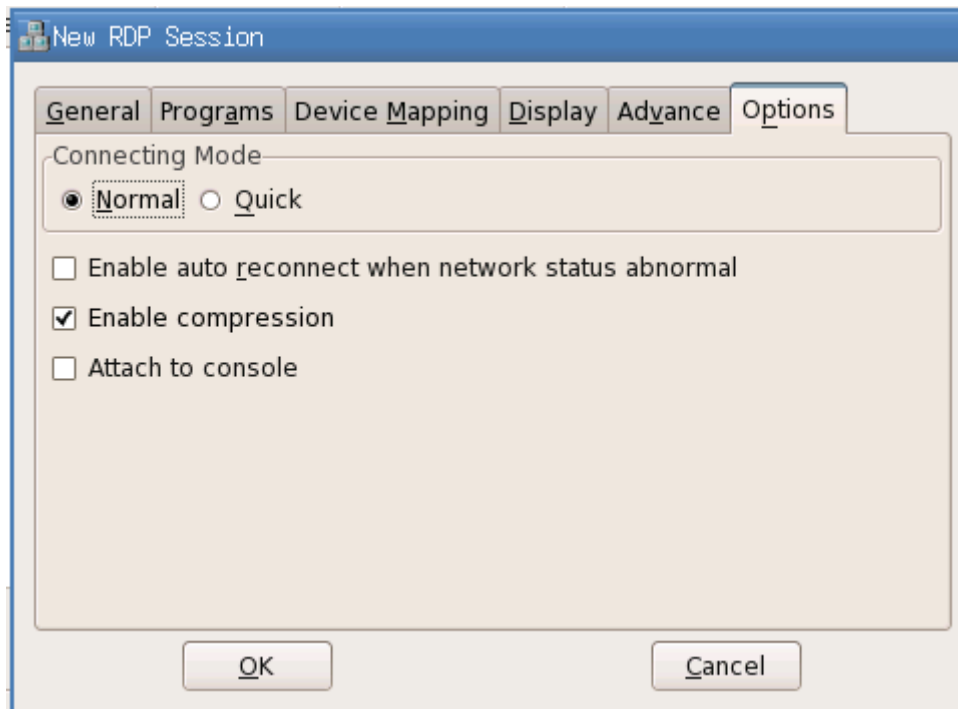
If the “Connecting Mode” is set as “Quick”, then the “Automatic Login” in “General” and the options in “Programs” would be gray. When connecting, the connection manager would prompt the user to input the server address to connect to.

If the option “Enable auto reconnect when network status abnormal” is checked, then it can prompt the users whether to reconnect when the network status is abnormal(the network cable is not plugged in or the network is blocked, etc)

If the option “Enable Compression” is checked, then it can obviously improve users’ visual experience when the network bandwidth is low. It is recommended that users use this function.

If the option “Attach to console” is checked, then it would prompt to install the driver when there is no driver installed for the peripheral connected to the server.

As the picture shows below:



Picture 2-2-1-8

## 2.3 System Hotkey Instructions

Hotkey	Function
Ctrl+Alt+S	Restore the default display parameter setting
Ctrl+Alt+Del	Lock the screen
Shift+F2	Save the system settings
Ctrl+Tab (or Alt+Tab)	Switch the windows on the desktop(When switching windows in RDP full screen window, it only supports Alt+Tab)
Ctrl+Alt+C	Open the control center
Ctrl+Alt+A	Check the version information
Ctrl+Alt+U	Module Update
Ctrl+Alt+Shift+U	Set the auto update of the system version. Input the terminal IP and update server IP and click "ok", then the system would restart automatically and enter the update mode.

