

Pop Center Software

User Manual



NOV 5, 09

CONTENTS

1. Introduction.....	3
2. Features.....	3
3. Install the POP Center Software.....	4
4. Start the POP Center Software.....	5
4.1 Basic Setup.....	5
4.2 Scrolling Setup.....	7
4.3 Schedule Setup.....	8
4.4 Server File List.....	10
4.5 Machine Status.....	11
4.6 Advance Setup.....	11

1. INTRODUCTION

The **POP Center (SPX01)** is the most powerful and intelligent centralized remote management software that enables you to manage up to 100 B1080PX deployments anywhere in the world. The **POP Center (SPX01)** provides you complete control to upload contents, schedule playlists, set multi-display modes and monitor the real-time status of each B1080PX.

The **POP Center (SPX01)** can effectively solve most problems without the need for costly onsite service.

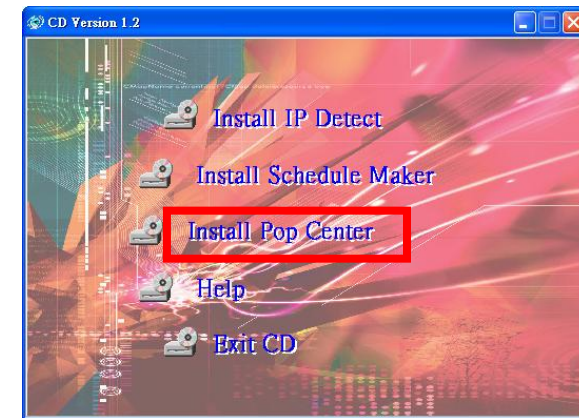
2. FEATURES

- Standard Version (free): Manage 5 B1080PX
- Professional Version (need charge): Manage up to 100 B1080PX.
- Upload contents
- Schedule playlists
- Set multi-display modes
- Monitor status and log files of each B1080PX
- Minimum System Requirements
 - OS: Windows XP/ 2000
 - Processor: Intel Pentium Dual Core 1.8 GHz or above
 - 1GB RAM or above

3. INSTALL THE POP CENTER SOFTWARE

Step1: Insert the driver CD into your CD-ROM drive, then the autorun function will start up the shell program. If the autorun window does not display, please execute the Autorun.exe program to bring out the autorun screen.

Step2: Click on the **Install Pop Center** to install the remote management software (POP Center).



click **Next** to continue



click **Install** to start the installation



Installing



click **Next** button to install WGuardBDE



click **Finish** button to complete WGuardBDE installation



click **Finish** button to complete PopCenter installation

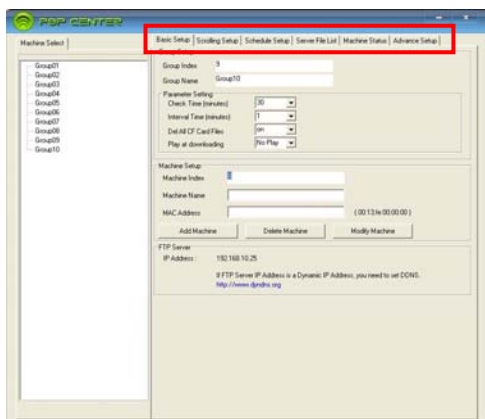
Step3: After installing the Pop Center software, the "Pop Center" icon should appear on your desktop.

Or you could also find the shortcut by click on < Start > → < Programs > → < PopCenter >.

4. START THE POP CENTER SOFTWARE

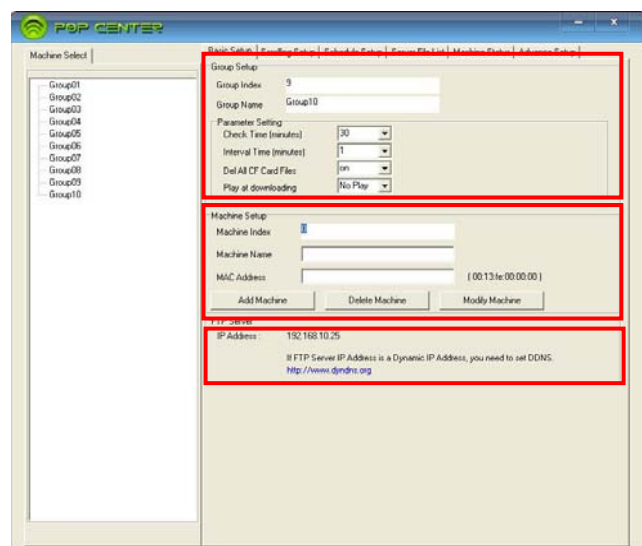
- Double click on the POP Center's execution file on Windows **Desktop** or in the PopCenter folder of the **Start menu**. When the program is executed, the following screen will appear.
- There are six tabs in the tab menu: "Basic Setup", "Scrolling Setup", "Schedule Setup", "Server File List", "Machine Status" and "Advance Setup".

NOTE: The standard version only supports Group01 and five machines. If you want to use professional version (manage up to 100 units), you need USB Lock hardware.

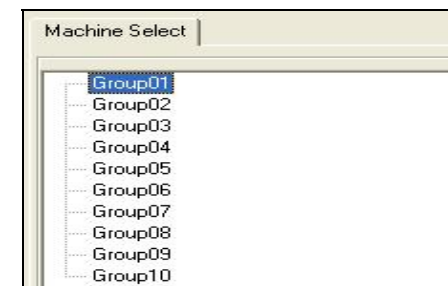


4.1 Basic Setup

There are three parts in the Basic Setup window: "Group Setup", "Machine Setup" and "FTP Server".



4.1.1 Group Setup: Please select one of the groups from the **Machine Select** before setting up the group parameters.



Parameter Setting:

- Check Time (minutes):** The B1080PX will connect to FTP server and check whether the commands file in the FTP server. The **Check Time** is the initial time to connect to the FTP server.
- Interval Time (minutes):** Set the next time to connect to the FTP server and check whether the commands file in the FTP server.
Example 1: The current time of the B1080PX is 00:00. The **Check Time** is 25 minutes and the **Interval Time** is 6 minutes.
The B1080PX will connect to the FTP server and check whether the commands file in the FTP server at 00:25, then again every 6 minutes (00:31, 00:37, 00:43, 00:49, 00:55...).
Example 2: The current time of the B1080PX is 00:10. The **Check Time** is 45 minutes and the **Interval Time** is 15 minutes.
The B1080PX will connect to the FTP server and check whether the commands file in the FTP server at 00:45, then again every 15 minutes (01:00, 01:15, 01:30, 01:45, 02:00...).
Del All CF Card Files: Delete the original files on the CF card after finish downloading.
 - on: Delete the original files on the CF card
 - off: Keep the original files. The B1080PX will overwrite a file of the same name.**Play at downloading:** Play files and FTP auto download simultaneously.
 - No Play: Disable the function (the speed of download will be faster).
 - Play: Enable the function (the speed of download will be slower).



4.1.2 Machine Setup: Enter the machine name and MAC address (EX: 00:13:fe:00:00:00) of the B1080PX, then click on the Add Machine button to add a new machine.

NOTE: Please select one of the groups from the **Machine Select** first before adding a new B1080PX.

Machine Setup

Machine Index0

Machine Name

MAC Address(00:13:fe:00:00:00)

Add Machine

Delete Machine

Modify Machine

4.1.3 FTP Server: When you run POP Center software, it will create a FTP Server. (If you want to use a Dynamic IP Address, you will need to set DDNS.)

FTP Server

IP Address : 192.168.10.25

If FTP Server IP Address is a Dynamic IP Address, you need to set DDNS.
<http://www.dyndns.org>

4.2 Scrolling Setup

Please select one of the groups from the **Machine Select** before setting up the scrolling function.

- Scrolling Setup:** Set the multi-display mode

Scrolling Setting-Group01

Display ModelModel3

Create PNG File

- Create PNG File:** Click on the **Create PNG File** button to import pictures (only supports png format, size: 213x641/ 96DPI).

Create PNG File

PNG File Control

PNG File List

1.png

2.png

3.png

C:\PopCenter\LocalGroup01\

0.png

1.png

2.png

3.png

4.png

5.png

6.png

7.png

8.png

9.png

Import File

Delete PNG File

Delete

Refresh

Apply

■ Scrolling Text

- Color:** Select the color of the text; user might select white, yellow and green.
- Background:** Turn on or off the background of the scrolling text.
- Slide:** Set the mode of picture slideshow (**By Slide Time/ Match Video**).
- Language:** Select the font that the user wants to use in the scrolling text. Support fonts are: Latin1, Latin2, Japanese and Greek.
- Speed:** Set the speed of the scrolling text.
- Text Maximum:** Display the remaining number of words can be input (the Scrolling text support up to 1000 chars). You can directly type the scrolling text in the blank field.
- Only Upload Scrolling Button:** Click on the button to finish and go to Server File List Sheet.
- Next Button:** Click on the button to finish and go to Schedule Setup Sheet.

Scrolling Text-Group01

ColorWhite

LanguageLatin1

BackgroundOff

Speedx1

SlideByTime

Text Maximum975

This is a scrolling text.

Only Upload Scrolling

Next

4.3 Schedule Setup

Please select one of the groups from the **Machine Select** before setting up the schedule function.

Step1: Click right mouse on the weekday half block to active the popup menu.

	Sun.	Mon.	Tue.	Wed.	Thur.	Fri.	Sat.
00:00							
01:00							
02:00							
03:00							
04:00							
05:00							
06:00							
07:00							
08:00							
09:00							
10:00							
11:00							
12:00							
13:00							
14:00							
15:00							
16:00							
17:00							
18:00							
19:00							
20:00							
21:00							
22:00							
23:00							

00:00

01:00

02:00

03:00

04:00

05:00

06:00

Sun.

Mon.

Tue.

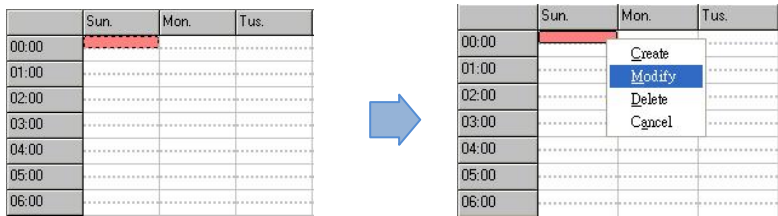
Create

Modify

Delete

Cancel

Step2: Select the Create item to mark the block. Click right mouse on the marked block again, and select the Modify item to open the Modify window.

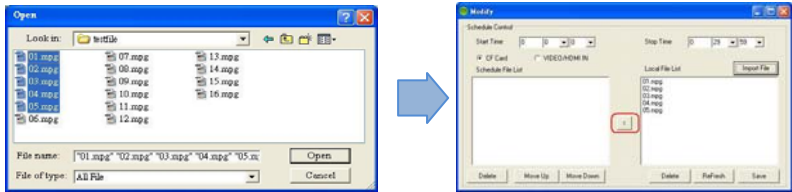


Step3: In the Modify window, you can import media files and set up the start and end time of each file.

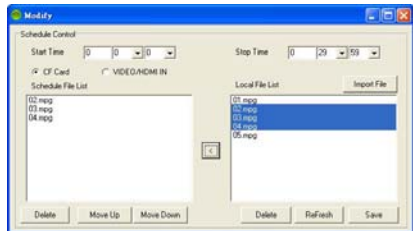


- **Start Time:** Set the time to start playing.
- **Stop Time:** Set the time to stop playing.
- **CF Card:** Play videos from CF card.
- **VIDEO/ HDMI IN:** Play videos from external devices (video in or HDMI in).
- **Import File:**

1. Click on the button to import media files. The import files will be list in the Local File List.

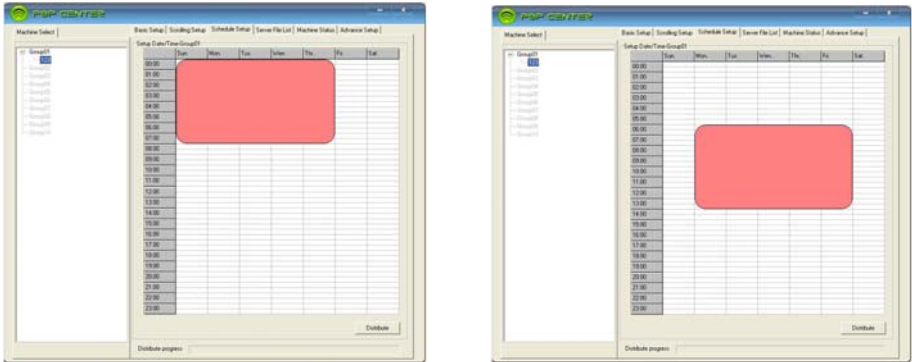


2. Select file from the Local File List and press "<" to add to Schedule File List.



3. Use the **Move Up** or **Move Down** Button to change the order that the files are played.
4. Use the Delete button to delete the selected file in the Local File List or Schedule File List.
5. Save Button: After finish setting, press the button to save and quit.

Step4: You can use mouse to directly extend or move the marked block.



Step5: Click on the **Distribute** button to finish and go to Server File List sheet.

4.4 Server File List

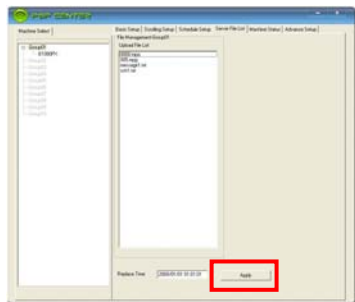
- **Upload File List:** Display all the files that will be uploaded.



- **Replace Time:** Set the time to restart the B1080PX after finish downloading (replace the downloaded files).



- **Apply Button:** Press the **Apply** button to create the **dmac.txt** file in the FTP server automatically, and the B1080PX will check the file at the specific time.



4.5 Machine Status

- **Auto Update Machine Status:** Display the connected B1080PX status. Select “Yes” to enable the function.
- **Light Define**



- **Play:** The B1080PX is playing.
- **Download:** The B1080PX is downloading.
- **Play/download:** The B1080PX is playing and downloading simultaneously.
- **Stop:** The B1080PX is stopped.
- **Disconnect:** Network connection error.
- **Disable:** The B1080PX is not set yet.

- **Group01**



- **Change Time (18:17:40):** Display the next time of update status.
- **Machine replace time:** Click left mouse on the status light to display the last replace time.
- **Log Function:** Double click the left mouse button on the status light to open the log file of the B1080PX.



4.6 Advance Setup

- **Language Selection:** Select the OSD language.
- **FTP Server Manager:** Set the FTP Server.

