

XL-ICA-370M2

Network camera



User manual

Contents

1. Login Interface.....	3
2. Preview	4
2.1 Open/Close Preview.....	5
2.2 Full-screen Preview.....	5
2.3 Electronic Zoom-in	5
2.3 PTZ Control	6
3. File Management.....	8
3.1 Search.....	8
3.2 Review Playback Image.....	8
3.3 View Preview Image	9
3.4 View Backup File	10
3.4 View Images in File Management.....	10
4. Parameter Settings.....	10
4.1 Device Parameters.....	10
4.1.1 Device Info.....	10
4.1.2 RS232.....	11
4.1.3 Decoder	11
4.1.4 DST Setting.....	11
4.2 Channel Parameters.....	12
4.2.1 Display Settings	12
4.2.2 Video Settings	12
4.2.3 Video Parameters	13
4.2.4 Schedule Record.....	13
4.2.5 Motion Detection	14
4.2.6 Video Tampering	15
4.2.7 Video Mask	16
4.3 Network Parameters	17
4.3.1 Network Settings.....	17
4.3.2 DDNS Settings.....	18
4.3.3 NTP Settings	18
4.3.4 Email Settings	18
4.3.5 3G Settings.....	19
4.3.6 WiFi Settings.....	20
4.4 Alarm & Exception	20
4.4.1 Alarm Input	20
4.4.2 Alarm Output.....	21
4.4.3 Exception Setting	21
4.5 User Info	21
4.5.1 User Management	21

4.5.2 Online User	display current online user information	22
4.6 System Management		22
4.6.1 System Update		23
4.6.2 Auto Reboot		23
4.6.3 Stream Info.....		23
4.6.4 HD Disk		23
4.6.5 Restore		23
4.6.6 Local Setting		24
5. Exit.....		24

Statement

The instruction is for guidance only. Detailed information is in accordance with the product.

The instruction may include some technical inaccuracies or typographical error though it is prepared with our every effort.

The product or procedures described in the instruction may be changed or updated at any time without prior notice.

Screenshots used in the instruction are from the other machine and are only for indications and explanations.

For any doubts or to request documents about latest products and complementary notes, please consult with the after-sales service department.

Precautions

The followings describe information about correct usage and risk prevention as well property loss prevention to be strictly followed.

Please use web cameras in an environment within allowable temperature (-10°C to +55°C) and humidity.

Check if the power supply works normally before operation.

Do not furiously strike on the product and be careful not to fall it over.

Do not install the product in a dusty or moist place, or a place with strong electromagnetic radiation.

Do not place a container or others with liquid on the product or allow liquid to flow into inside the product.

When the product is left unused, place install the preventive dust cover for the image sensor.

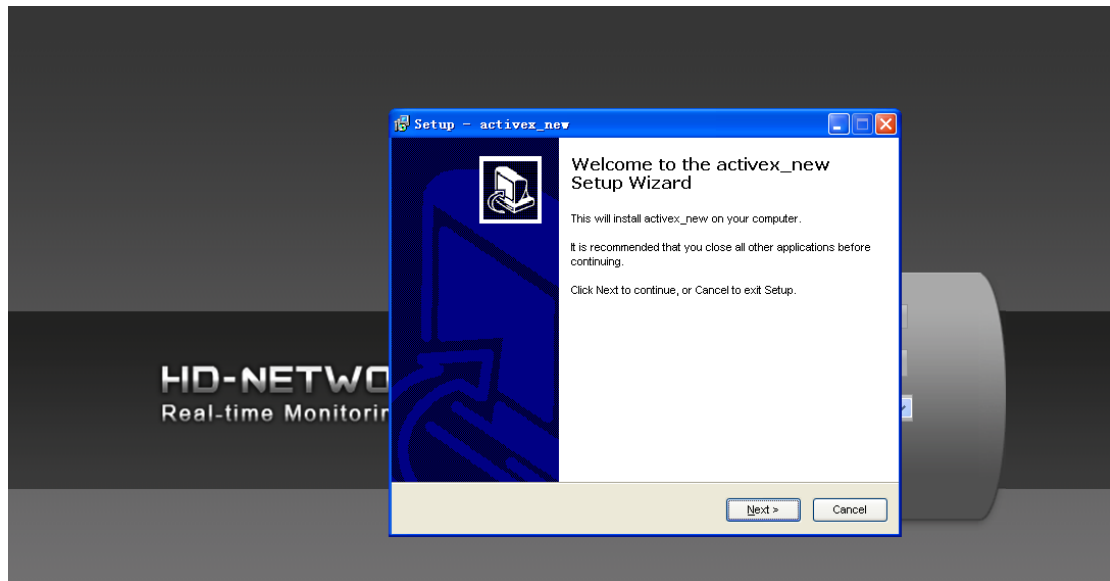
Do not disassemble the product without authorization.

1. Login Interface

Type the IP address of the front-end device into the IE address bar to access to the Login interface, as shown in the following figure:



Install Activex control. After entering the login interface, you will be asked to install the Activex control, as shown in the following figure:



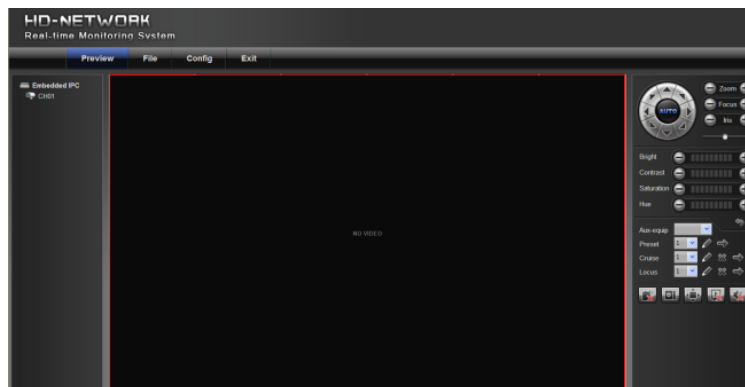
If it cannot be installed automatically, you can choose to manually install it. Then, you can:

Input user name: admin (default setting)

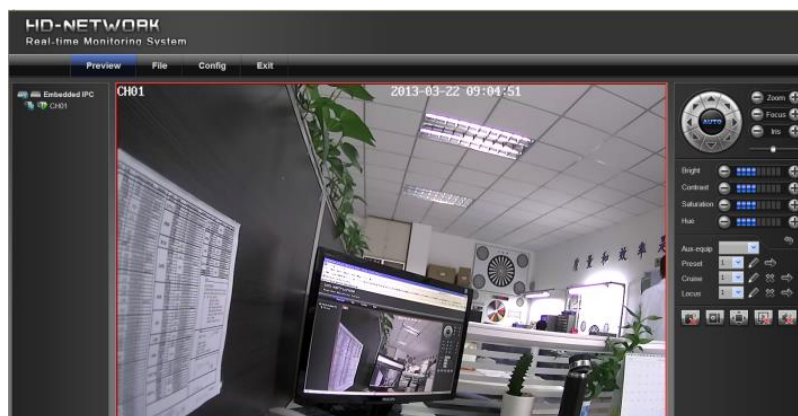
Input password: null (default setting)

Select language: Chinese or English

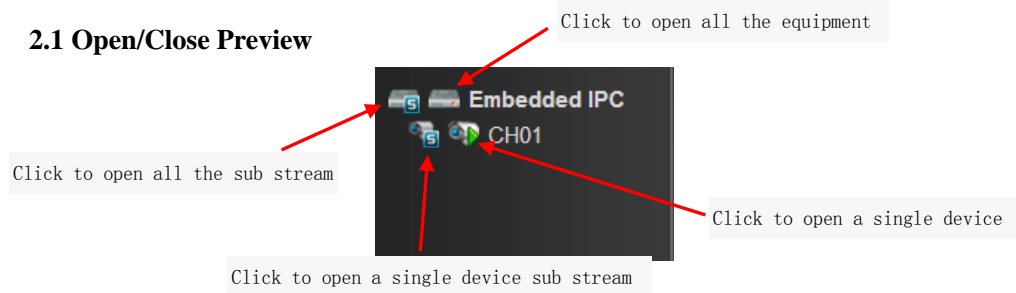
Click [Submit], as shown in the following figure:




2. Preview



2.1 Open/Close Preview



2.2 Full-screen Preview

Click the full-screen icon  in the lower right corner to preview in full screen. In the preview window, right click (or Esc key) to exit from full screen display.

2.3 Electronic Zoom-in

Use your mouse to select the preview channel to be zoomed in by scrolling the mouse wheel, as shown in the following figure:



2.3 PTZ Control



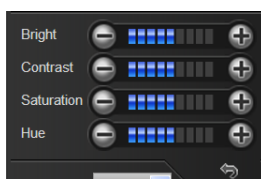
PTZ control: you can use eight directional keys to rotate front-end devices, and AUTO indicates auto-rotation.

Zoom in/out: to adjust degree of zooming in/out

Focus: to adjust size of focus

Aperture: to adjust size of aperture

Speed: use the slider to regulate the PTZ speed




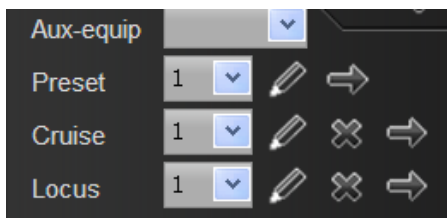
Bright: to adjust the brightness of the screen


Contrast: to adjust the contrast of the screen


Saturation: to adjust the saturation of the screen


Hue: to adjust the hue of the screen

The  arrow is used to restore default settings.

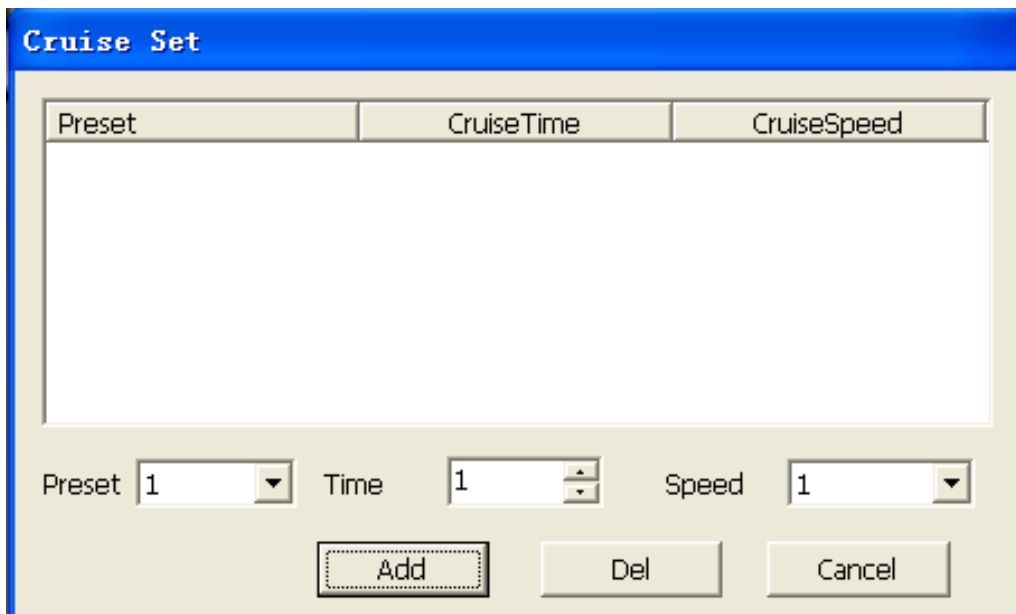


[Set a preset point] Set a preset point by using direction keys on the PTZ control to rotate the camera to the desired location, and then select a preset number from the "preset point" drop-down list and then pressing  button.

[Call a preset point] Call a preset point by selecting a preset number to be called from the "preset point" drop-down list and pressing  button.



[Set a cruise] Select a cruise number from the "cruise" drop-down list and press  button. The screen displays, as shown in the following figure: (click cancel after setting to exit from this screen)

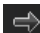
In the "cruise" setting page, select preset point, cruise time and cruise speed and then click "Add" button to add the preset point for the cruise path (you can add several preset points). Click "Delete" button to delete a preset point.



[Call a cruise] Call a cruise by selecting a cruise number from the "cruise" drop-down list and then clicking "➡" button.

[Delete a cruise] Delete a cruise by selecting a cruise number from the "cruise" drop-down list and then clicking "✕" button.

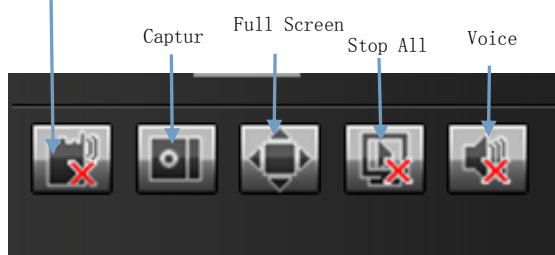
[Set a locus] Select a locus number from the "Locus" drop-down list and click "enable locus memory"  button. Then perform PTZ controls, and click "disable locus memory"  button. The locus is memorized.

[Call a locus] Call a locus by selecting a locus number from the "Locus" drop-down list and clicking  button.

(Currently, only one locus is supported)

[Delete a locus] Delete a locus by selecting a locus number from the "locus" drop-down list and then clicking "✕" button.

VOICE INTERCOM



[Voice Intercom] click it to enable or disable voice intercom

[Capture] capture for preview. Click it to pop up its storage path automatically.

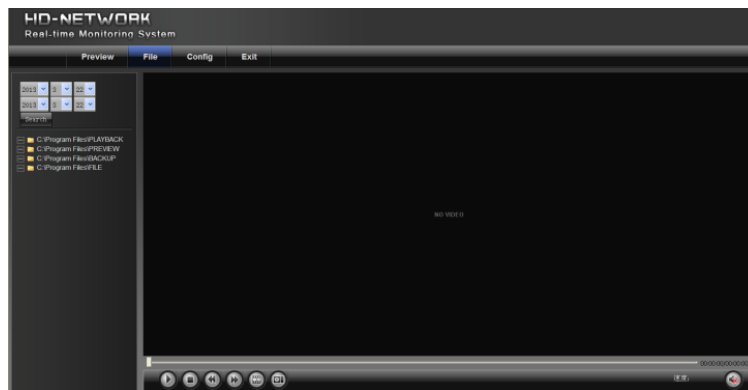
[Full screen] display the current preview in full screen

[Stop all] stop all current previews


[Voice] enable / disable front-end voice

Note: X indicates it is off or disabled

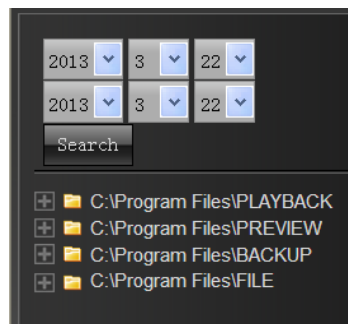
3. File Management



3.1 Search

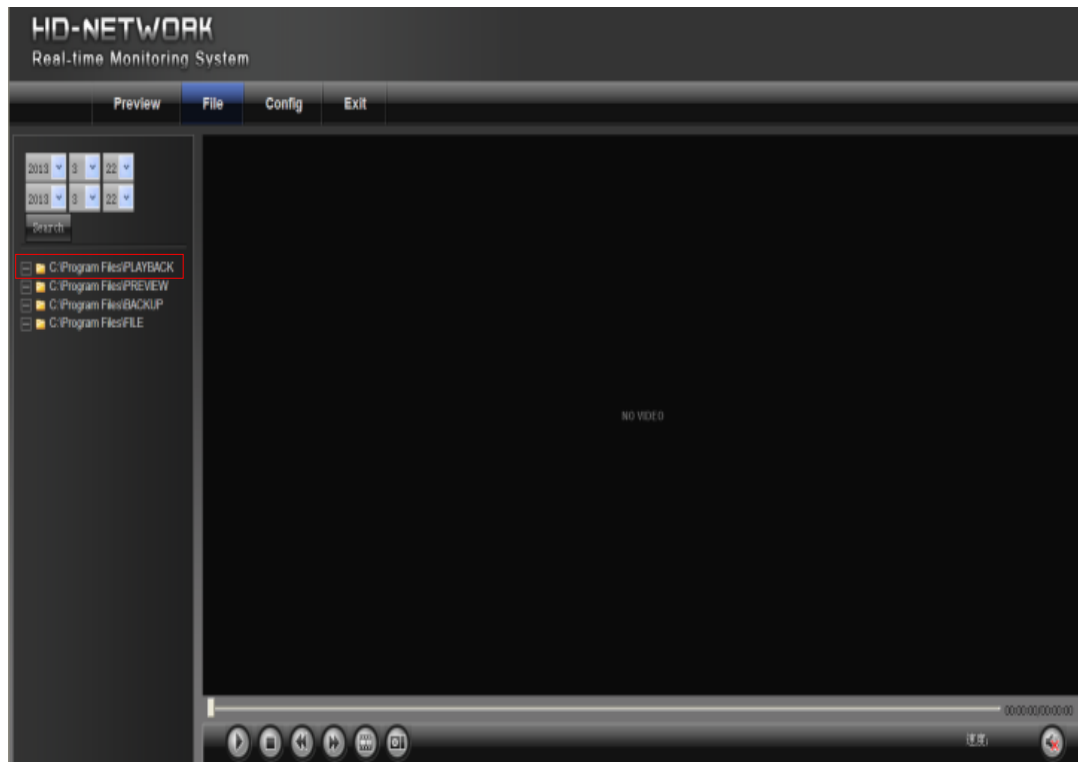
Select the start time, and click the  button, the lower part displays searched images and videos (double click to display files)

Note: You can change video or image storage path, which will be detailed later.



3.2 Review Playback Image

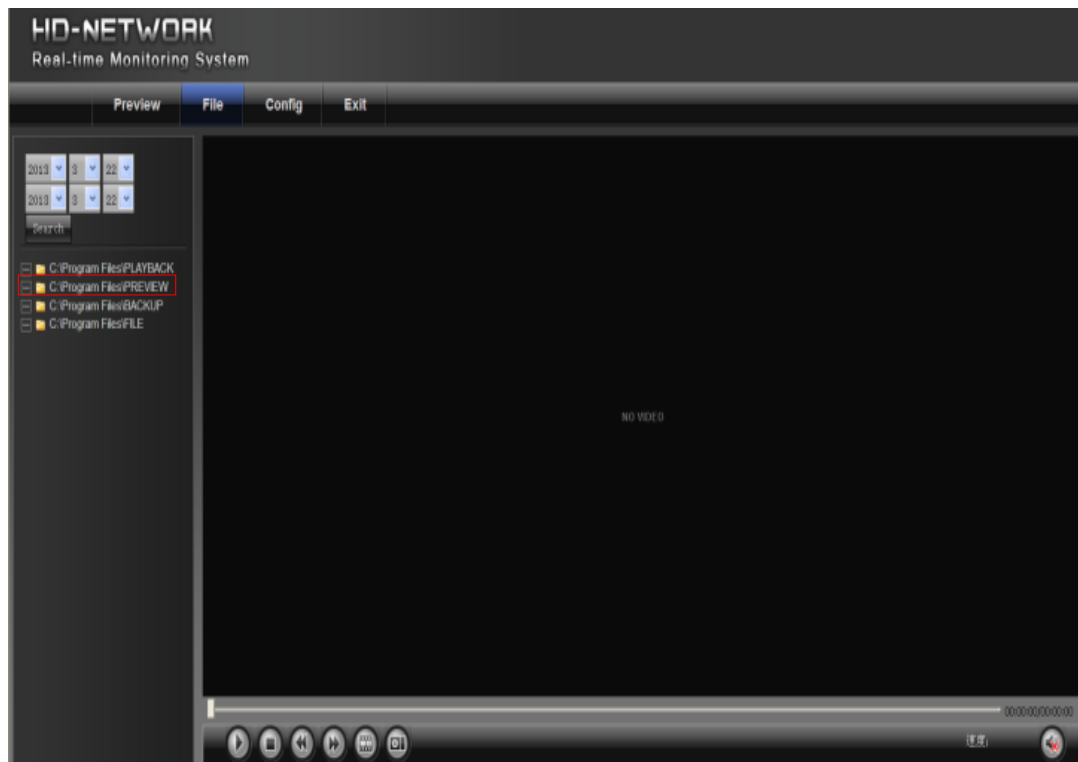
To review playback images under the C:\Program Files\PLAYBACK directory, double click the file, as shown in the following figure:



(Note: the front end device should support SD card storage to enable this function)

3.3 View Preview Image

To review preview images under the C:\Program Files\PREVIEW directory, double click the file, as shown in the following figure:



3.4 View Backup File

To review playback video files under the C:\Program Files\BACKUP directory, double click the file, as shown in the following figure:



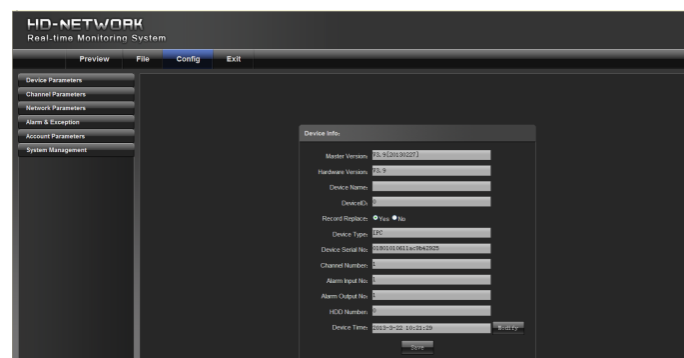
(Note: the front end device should support SD card storage to enable this function)

3.4 View Images in File Management

To view files in file management under the C:\Program Files\FILE directory, double click it.

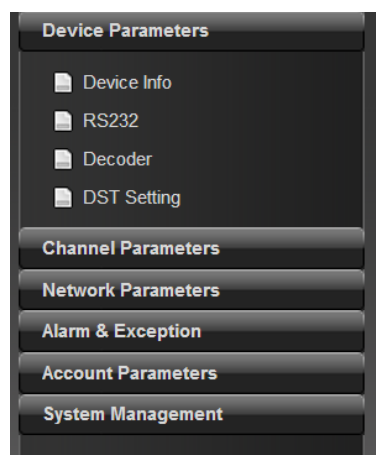
(Note: the front end device should support SD card storage to enable this function)

4. Parameter Settings



4.1 Device Parameters

Click parameter to display [Device info], [RS232], [Decoder] and [DST setting] options, as shown in the following figure:



4.1.1 Device Info

To view and edit basic information of the device

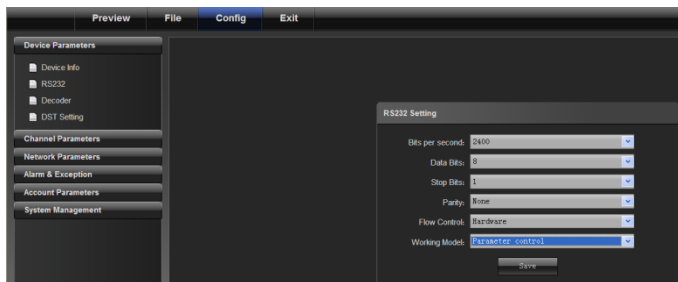


The 'Device Info' window displays various fields for device configuration. The fields and their values are as follows:

Field	Value
Master Version	V3.9[20130227]
Hardware Version	V3.9
Device Name	
DeviceID	0
Record Replace	<input checked="" type="radio"/> Yes <input type="radio"/> No
Device Type	IPC
Device Serial No	01801010611ac9b42925
Channel Number	1
Alarm Input No	1
Alarm Output No	1
HDD Number	0
Device Time	2013-3-22 10:21:29

Buttons: 'Save' and 'Modify'.

4.1.2 RS232



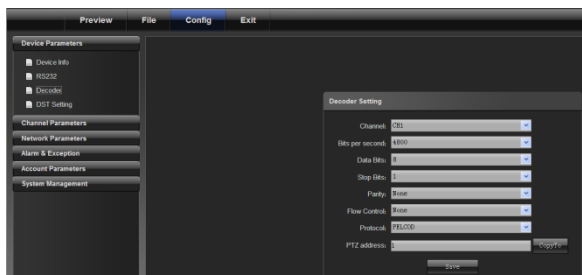
The 'RS232 Setting' window displays the following parameters:

Parameter	Value
Bits per second	2400
Data Bits	8
Stop Bits	1
Parity	None
Flow Control	Hardware
Working Model	Parameter control

Buttons: 'Save'.

To set RS232 parameters

4.1.3 Decoder



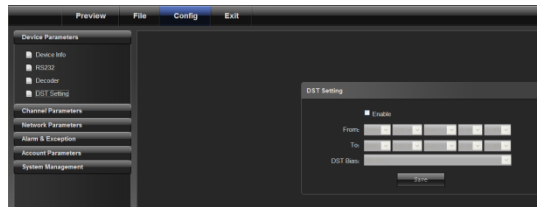
The 'Decoder Setting' window displays the following parameters:

Parameter	Value
Channel	01
Bits per second	4800
Data Bits	8
Stop Bits	1
Parity	None
Flow Control	None
Protocol	RTSP
PTZ address	1

Buttons: 'Save' and 'Copy'.

To set RS485 parameters (combined with PTZ)

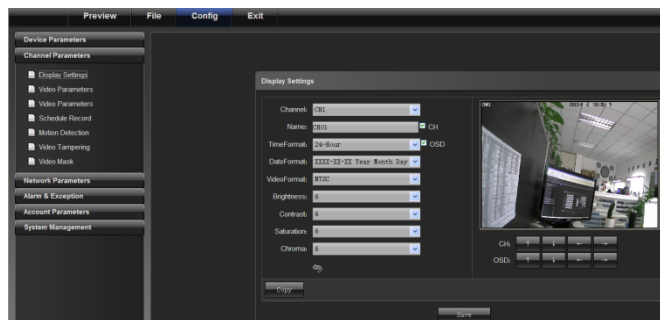
4.1.4 DST Setting



DST setting: to enable and set DST parameter

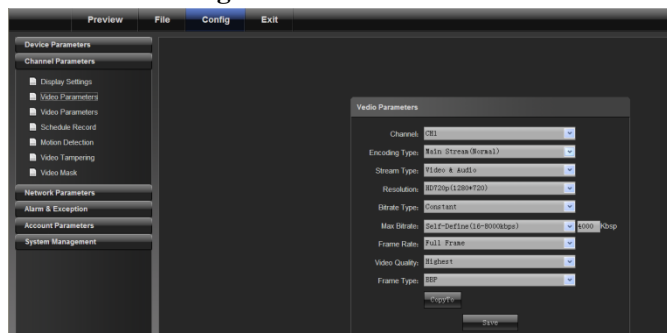
4.2 Channel Parameters

4.2.1 Display Settings



- 1) Channel No.: to change a channel No.
- 2) Channel Name: to modify the name for a specific channel
- 3) Time Format: to change a time format for a specific channel
- 4) Date Format: to change a date format for a specific channel
- 5) OSD location: to set the name and time for a specific channel
- 6) Parameter adjustment: to adjust brightness, contrast and saturation for a specific channel
- 7) Copy: to copy set parameters to other channels

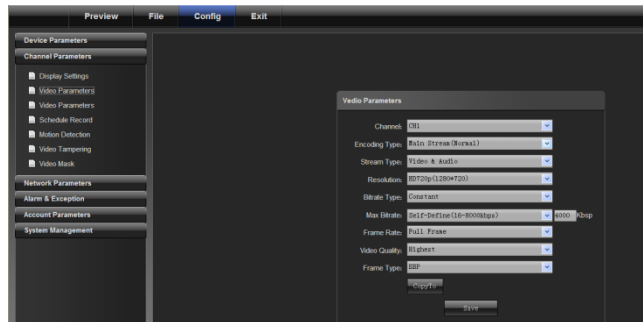
4.2.2 Video Settings



- 1) Channel No.: to change a channel number (the webcam has only one channel)
- 2) Encoding type: normal record, network record or event record
- 3) Stream type: complex stream and video stream
- 4) Resolution: displays resolution types supported by front-end Network camera
- 5) Bitrate type: Constant bit rate or variable bit rate
- 6) Max bitrate: set different code rate for different channels
- 7) Frame rate: select different value from the drop-down list. FULL is used by default.
- 8) Video quality: select different video qualities as required. "Highest" is used by default.
- 9) Frame type: select different frame types
- 10) I frame interval: set I frame interval

(Note: change of "video settings" will directly change front-end Network camera parameters.)

4.2.3 Video Parameters

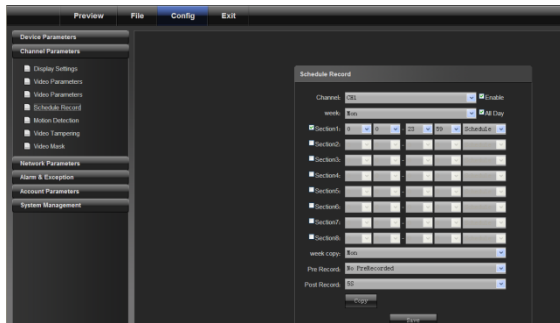


Set "Video Parameter" for front end devices

- 1) Current channel: select a different channel number (the webcam has only one channel)
- 2) Day/night auto switch: externally triggered, auto, color, black/white, day/night switching (0-30) is completed in 3 seconds by default.
For non-IR web models, auto is used by default; for IR web models, "externally triggered" is used by default. A user can select a day/night switch mode according to models and operating environment.
- 3) Image mode: standard, bright, natural
Standard is used by default
- 4) Auto gain: low, medium and high
Medium is used by default
The higher the auto gain is, the higher the sensitivity in low illumination level is, but noise is more significant.
- 5) White balance: auto, indoor, outdoor
Auto is used by default. A user can switch modes according to its working scenario.
- 6) Image: normal, level, vertical, 180°
Normal is used by default
- 7) Backlight compensation: off, BLC, HBLC
OFF is used by default. For BLC, Black Light Compensation is enabled, while for HBLC, strong light inhibition is enabled
- 8) Shutter mode: auto, flicker, 1/30(25)-1/5000, X2-X30
Auto is used by default
- 9) Lens aperture: auto and manual
- 10) Sharpness: on and off, 0-100 adjustable
On is used by default with its value being 80
- 11) 3D noise reduction: on and off, 0-100 adjustable
ON is used by default with its value being 25

(Note: this function should be support by front end devices)

4.2.4 Schedule Record

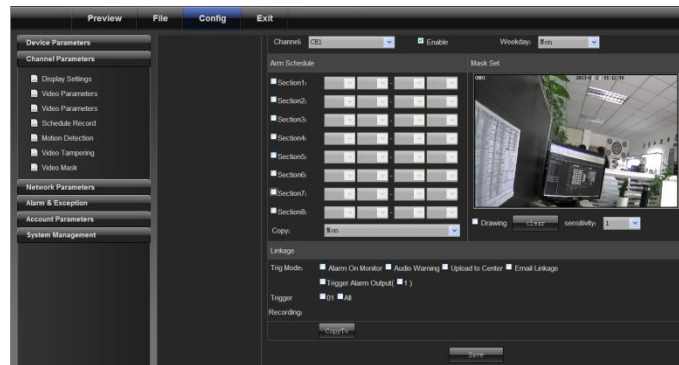


- 1) Channel No.: to change a channel No.
- 2) Enable: check Enable/Disable
- 3) All day: if it is checked, it is recorded all day
- 4) Week: select a different week day
- 5) Time section: you can set different types of records in 8 sections for a day
- 6) Week copy: you can copy set parameters to other weeks
- 7) Pre-record: set the pre-record time to trigger event record
- 8) Post-record: set the post-record time to trigger event record
- 9) Copy: to copy set parameters to other channels

(Note: the front end device should support SD card storage to enable this function)

4.2.5 Motion Detection

On the "Video Tampering" page, select a channel number for which the mask alarm is enabled. Check "Enable", and then select the week to be armed, as shown in the following figure:



Arm schedule:

You can set 8 sections of arm schedule, and then copy them to each week, as shown in the following figure:

Arm Schedule

<input checked="" type="checkbox"/> Section1:	0	0	-	23	59
<input type="checkbox"/> Section2:			-		
<input type="checkbox"/> Section3:			-		
<input type="checkbox"/> Section4:			-		
<input type="checkbox"/> Section5:			-		
<input type="checkbox"/> Section6:			-		
<input type="checkbox"/> Section7:			-		
<input type="checkbox"/> Section8:			-		

Copy: Mon

Settings on motion detection area:

Check "Drawing" to select the area to be detected

Click "Clear" to clear the designated area for the current channel

Sensitivity: the higher the sensitivity is, the better the motion detection effect is.

Mask Set

CH01 2013-01-22 11:13:19

☒ Drawing clear sensitivity: 1

Linkage:

Linkage

Trig Mode: ☐ Alarm On Monitor ☐ Audio Warning ☐ Upload to Center ☐ Email Linkage

☐ Trigger Alarm Output(1)

Trigger ☐ 01 ☐ All

Alarm on monitor: view alarm information on the monitor

Audio warning: the device gives warning sound

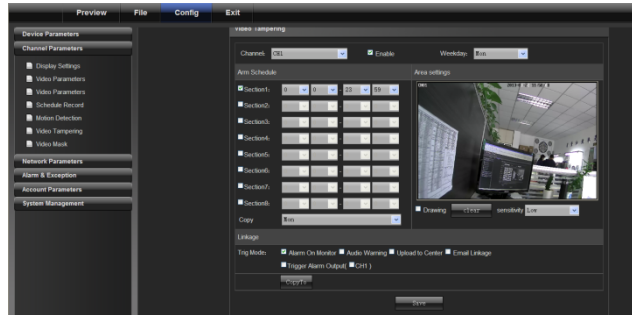
Upload to center: view alarm information in the control center

Email linkage: after an alarm is triggered, it will send an email to the designated email address

Trigger alarm output: trigger related alarm device

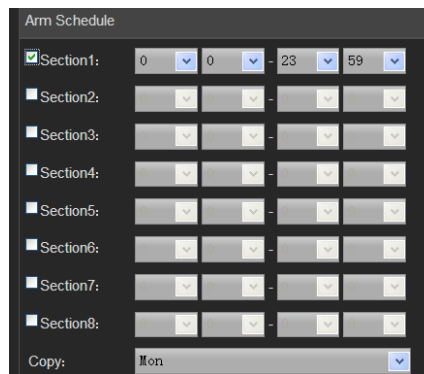
4.2.6 Video Tampering

On the "Video Tampering" page, select a channel number for which the mask alarm is enabled. Check "Enable", and then select the week to be armed, as shown in the following figure:



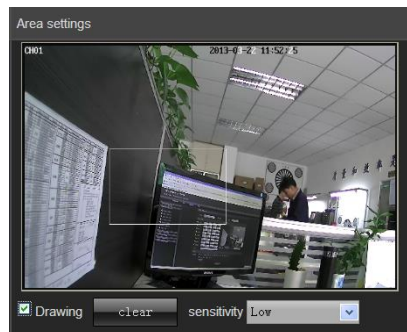
Arm schedule:

You can set 8 sections of arm schedule, and then copy them to each week, as shown in the following figure:



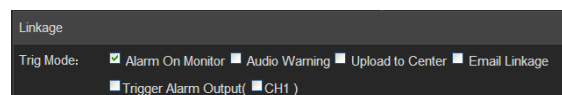
Mask set:

Check "Drawing" to set the area giving mask alarm, and adjust the sensitivity, as shown in the following figure:



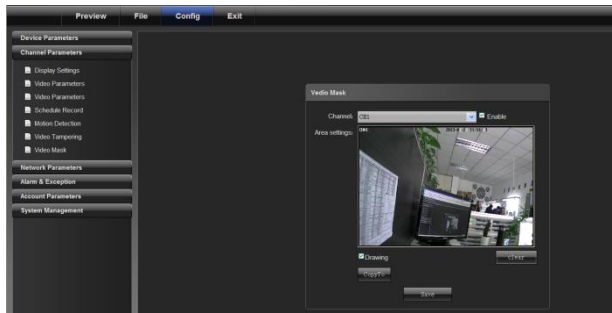
Linkage:

Choose a linkage mode if an alarm is triggered, as shown in the following figure:

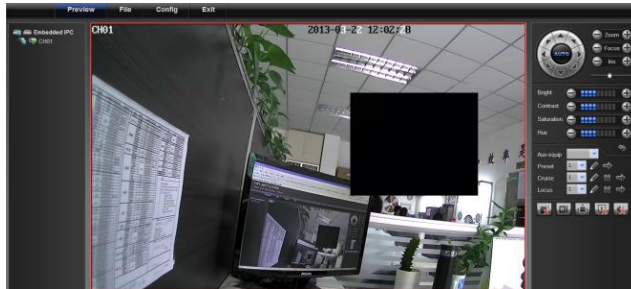


4.2.7 Video Mask

On the Video Mask page, select the channel No. to enable mask alarm, and then check "Enable", as shown in the following figure:

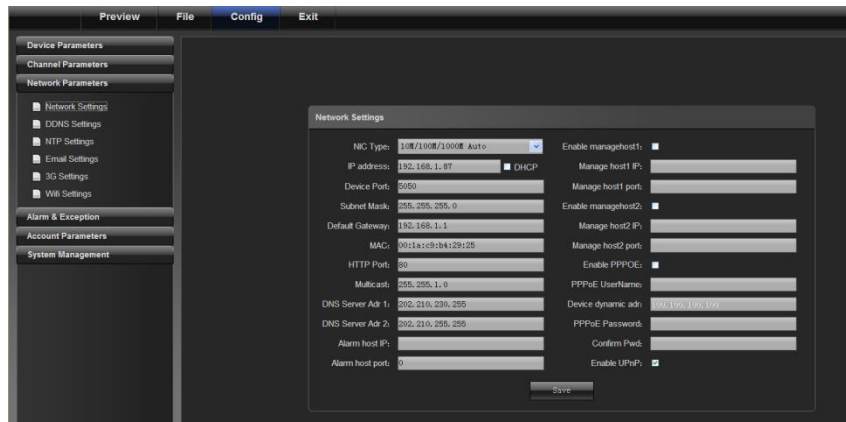


Video Mask Effect



4.3 Network Parameters

4.3.1 Network Settings

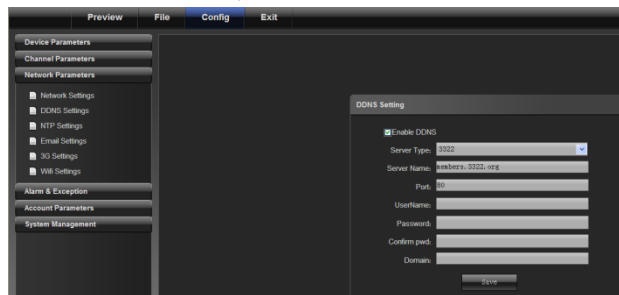


- 1) NIC type: select a NIC type as required.
- 2) IP address: input IP address.
- 3) Auto config.: if this is enabled, the device will auto gain a valid IP address according to DHCP of the router.
- 4) Device port: input the device port number.
- 5) Subnet mask: input the subnet mask corresponding to this IP address.
- 6) Default gateway: input the related gateway address.
- 7) MAC: display the physical address of the current network interface.
- 8) HTTP port No.: input the related port No. (80 by default)
- 9) Multicast: input the related multicast address.
- 10) "DNS server adr 1": IP address of DNS server.
- 11) DNS server Adr 2: IP address of DNS server.

- 12) Alarm host IP: input the IP address of the alarm host.
- 13) "Alarm host port": input the port No. of the alarm host.
- 14) "Enable PPPOE" : check it to enable this feature.
 - Input PPPOE user name.
 - Input device dynamic address.
 - Input PPPOE password.
 - Confirm password.
- 15) Enable UPNP: if it is enabled, device port and HTTP port will automatically be mapped into the router.

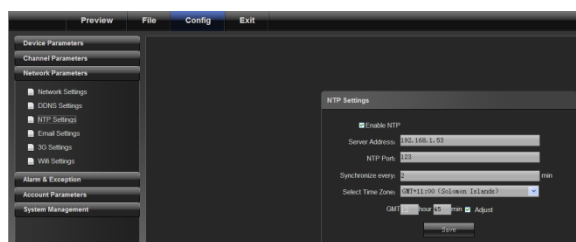
4.3.2 DDNS Settings

DDNS is implemented through a dynamic domain resolution server. It requires a PC with fixed IP address on the Internet, on which the dynamic domain resolution server runs.



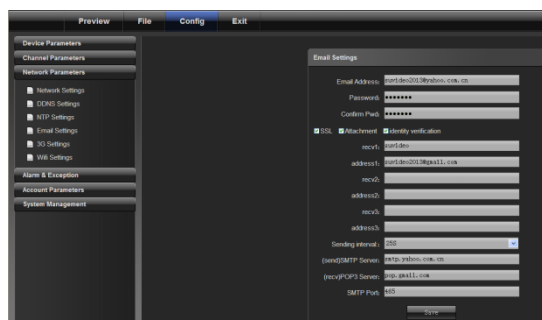
- 1) Select DDNS server type (Ipserver, Dyndns, PeanutHull and 3322, currently, only 3322 is supported)
- 2) Input server name, for example, member.3322.org
- 3) Input port No.
- 4) Input user name.
- 5) Input password.
- 6) Confirm password.
- 7) Input spare domain.

4.3.3 NTP Settings

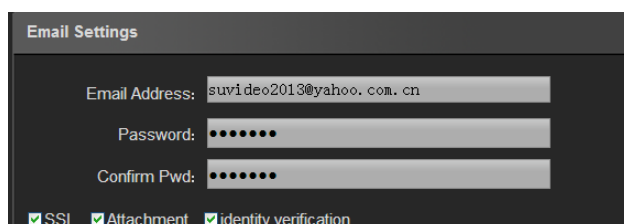


- 1) Input server address: IP address of NTP server.
- 2) NTP port: only TCP transmission is supported by SNTP. The port number is 123 by default.
- 3) Synchronize every: input the time interval to be adjusted.
- 4) Select time zone: optional time zone.
- 5) GMT: fine tune the time.

4.3.4 Email Settings



Outbox settings:



Email address: input the address of the outbox

Password: input the password of the outbox

Confirm password: confirm the password

Attachment: capture when attachment alarms

Identity verification: verify before sending an email

Inbox setting



(Note: you can set three receiving emails at most)

Sending server settings:



Sending interval: set the interval time to send an email

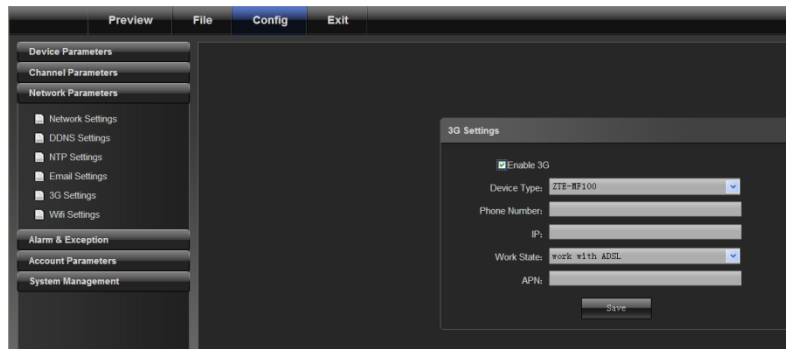
SMTP server: set the address of the smtp server for the sending email

POP3 server: set the address of the pop3 server for the sending email

SMTP port: set the port No. of the smtp server for the sending email

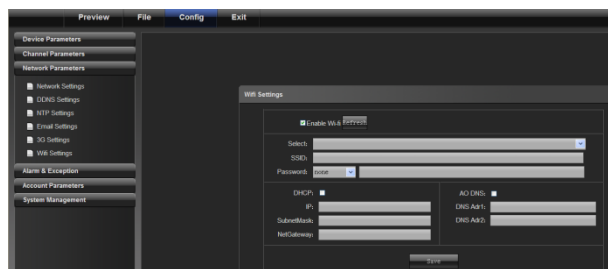
4.3.5 3G Settings

Connect to an external 3G device to enable 3G features. Select a device type, input phone number and then select work state. Finally, click "Save", as shown in the following figure:



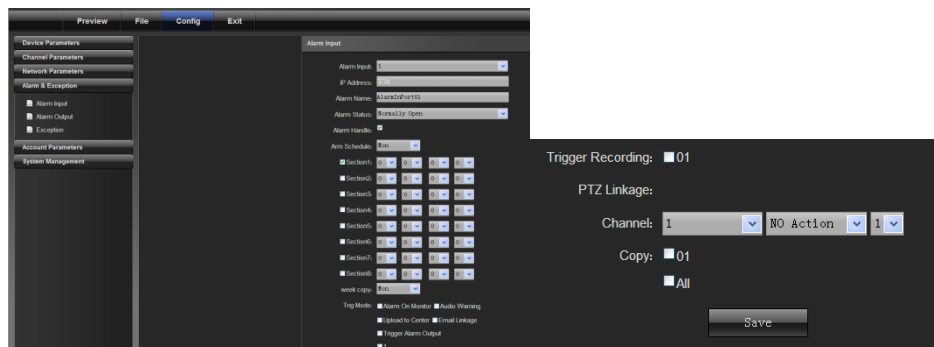
4.3.6 WiFi Settings

WiFi: connect to an external WiFi device, enable WiFi features and click refresh, and the device will automatically search the wireless network. Input related parameters and click "Save", as shown in the following figure:



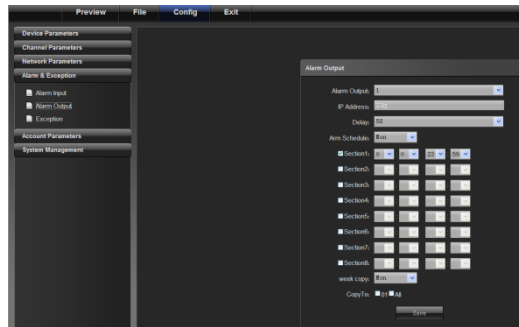
4.4 Alarm & Exception

4.4.1 Alarm Input



- 1) Select the alarm No. for alarm input
- 2) Select alarm status "Normally open/normally closed"
- 3) Alarm schedule
- 4) Select linkage mode
- 5) Set linkage PTZ (such as preset point, cruise and locus)

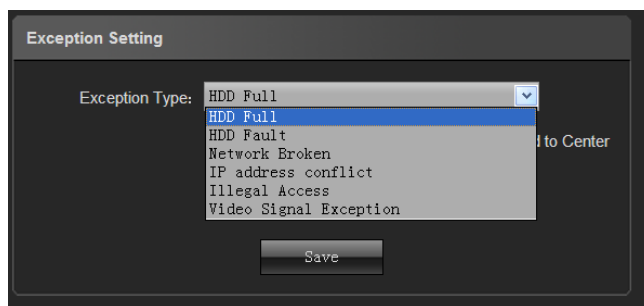
4.4.2 Alarm Output



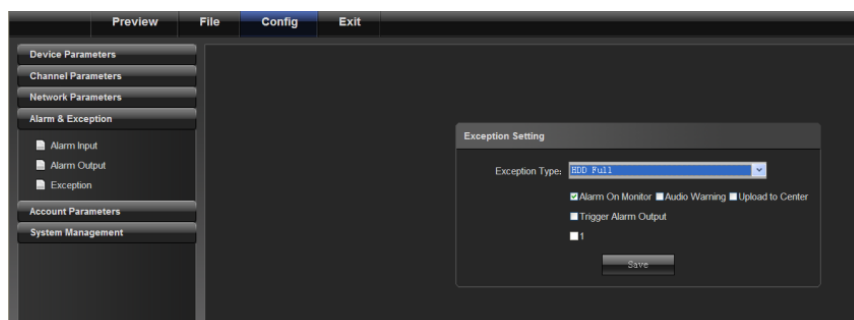
- 1) Select the alarm No. for alarm output
- 2) Select the delay for outputting an alarm (when the alarm finishes, the alarm outputs in the delayed time)
- 3) Alarm schedule
- 4) Copy set parameters to the related week day

4.4.3 Exception Setting

Including: HDD full, HDD fault, network broken, IP address conflict, illegal access and video signal exception, as shown in the following figure.

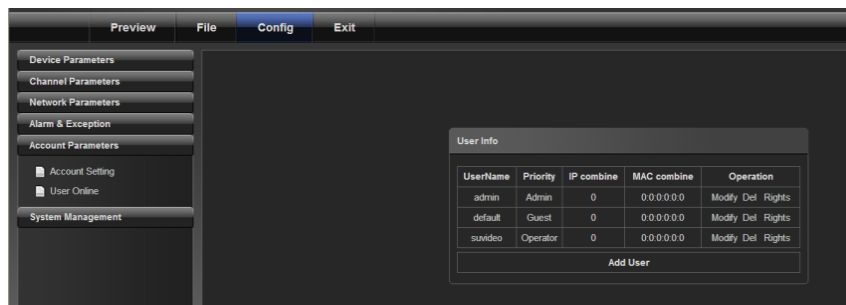


Their corresponding linkage modes are shown in the following figure:



4.5 User Info

4.5.1 User Management



Admin is the administrator (default)

Default indicates general users with permissions authorized to default users.(default)

Click [Add] to add a user, as shown in the following figure:

Click [RightsPermission] to assign permission to the new user, as shown in the following figure:

No.	UserName	Login Type	Login Time	IP
1	admin	Remote	2015-03-22 11:31:48	192.168.1.100
2	admin	Local	2015-03-21 16:45:52	0

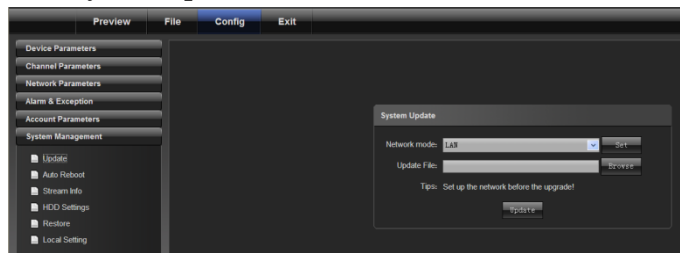
Click [Delete] to delete the new user

4.5.2 Online User display current online user information

No.	UserName	Login Type	Login Time	IP
1	admin	Remote	2015-03-22 11:31:48	192.168.1.100
2	admin	Local	2015-03-21 16:45:52	0

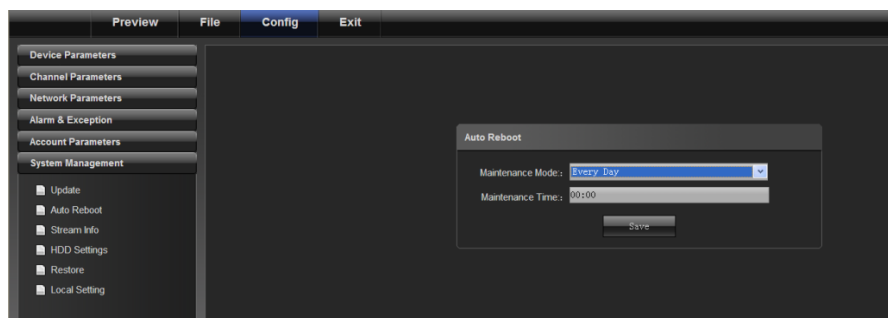
4.6 System Management

4.6.1 System Update



Click the related update package to locate it and click "Update".

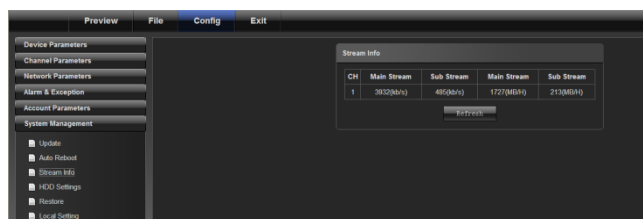
4.6.2 Auto Reboot



Selecting

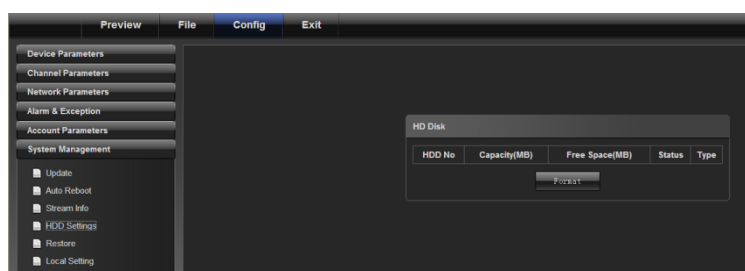
"maintenance mode" and "maintenance time", the device will reboot according to the designated mode.

4.6.3 Stream Info



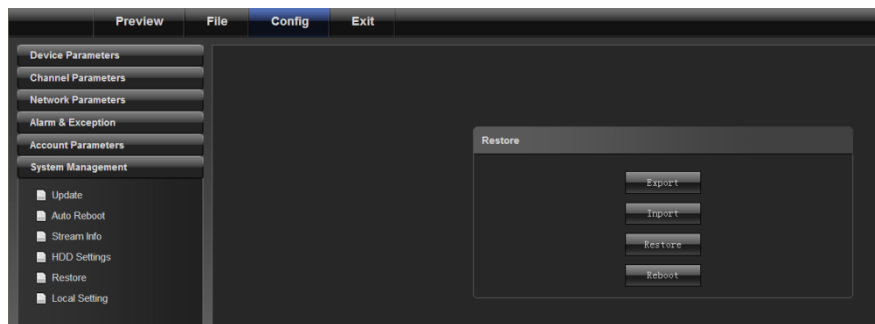
To view information about main stream and sub stream of current channels.

4.6.4 HD Disk



To view its capacity and free space, as well as to format it.

4.6.5 Restore



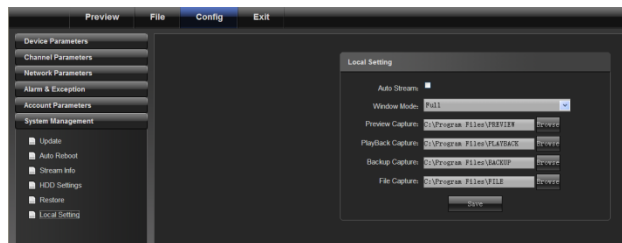
Export: export all configurations to PC or USB

Import: import selected configuration to the system

Restore: restore default settings

Reboot: restart the system

4.6.6 Local Setting



Auto stream: if it is checked, sub stream is connected for small screen, and main stream is connected for large screen.

Window mode: to set the aspect ratio of the preview window (filling, 4:3, 16:9)

Preview capture: to modify the path of the preview capture

Playback capture: to modify the path of the playback capture

Backup capture: to modify the path of the backup capture

File capture: to modify the path of the file capture

5. Exit

