

WM_Client User's Manual

Version 1.1





Product introduction

[Features]

- With this program installed on PDA, user can monitor the images on megapixel network camera over network.
- Wireless networks are easy to use without restrictions in place.
- It provides easy connection and site(camera) registration.
- You can control the system efficiently by ID and password with different authority.
- It can capture & save a still image.
- Full screen mode available.

Contents

Chapter 1. Program Installation

1.1 PDA specification	3
1.2 Program installation	3

Chapter 2. For the start of PDA Viewer 4

2.1 Site Registration, edit, delete(Network Camera Registration)	7
--	---

Chapter 1. Program Installation

1.1 PDA Specification

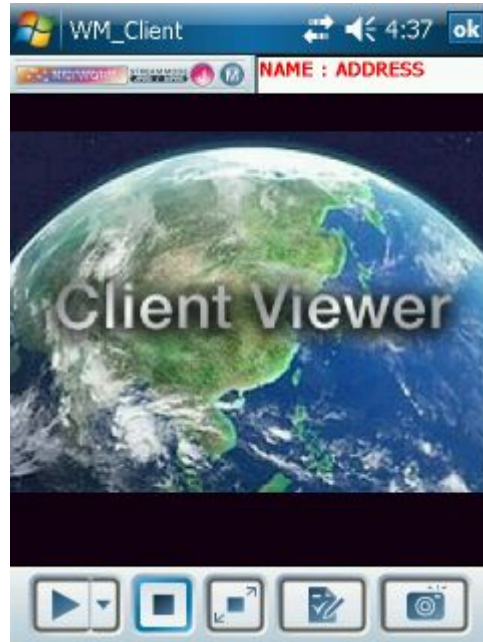
	Minimum Specifications	Recommended Specifications
CPU	Strong Arm	
O/S	Pocket PC 2003	Windows mobile 6.0 Classic
Resolution	320 x 240	640 x 480

1.2 Program installation

1. Copy the cab file into the PC from the install CD.
 - 1.1 Use the ActiveSync program then copy to PDA or
 - 1.2 Connect the memory card of PDA to user's PC then copy the file.
2. Click "cab file" and start the installation.











Chapter 2. For the start of PDA viewer

Start program by clicking Start → Program → WM_Client icon in order.

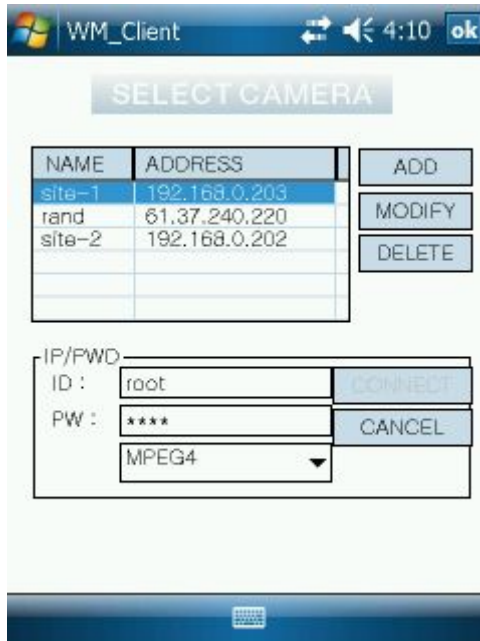


[Picture 2-1] Monitoring screen

[Button explain]

		Connect to JPEG stream
		Connect to MPEG4 stream
		Connect
		Select site to connect
		Disconnect
		Full Screen
		Site registration
		Capture



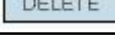

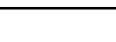
Chapter 2. For the start of PDA viewer



<Camera list management>
User can add, modify or delete the site.

[Picture 2-2] Camera list management screen

[Button explain]

	Site adding
	Site editing
	Site deletion
	Connect site
	Close this menu

Chapter 2. For the start of PDA viewer

2.1 Add, edit of site (Network camera registration)

Input the name address, port, ID and password.

[picture 2-4] Pop-up menu of site addition or deletion

[Button explain]

	Save and exit
	Cancel and close

•Please read this manual carefully before installing and using the product and preserve it for reference purposes.

•This specification is subject to change without any prior notice to improve the quality.