
VTMS System Configuration Manual

V2.0

Important Safeguards and Warnings

Please read the following safeguards and warnings carefully before using the product in order to avoid damages and losses.

Note:

- Do not expose the device to lampblack, steam or dust. Otherwise it may cause fire or electric shock.
- Do not install the device at position exposed to sunlight or in high temperature. Temperature rise in device may cause fire.
- Do not expose the device to humid environment. Otherwise it may cause fire.
- The device must be installed on solid and flat surface in order to guarantee safety under load and earthquake. Otherwise, it may cause device to fall off or turnover.
- Do not place the device on carpet or quilt.
- Do not block air vent of the device or ventilation around the device. Otherwise, temperature in device will rise and may cause fire.
- Do not place any object on the device.
- Do not disassemble the device without professional instruction.

Warning:

- Please use battery properly to avoid fire, explosion and other dangers.
- Please replace used battery with battery of the same type.
- Do not use power line other than the one specified. Please use it properly. Otherwise, it may cause fire or electric shock.

Special Announcement

- This manual is for reference only.
- All the designs and software here are subject to change without prior written notice.
- All trademarks and registered trademarks are the properties of their respective owners.
- If there is any uncertainty or controversy, please refer to the final explanation of us.

Please visit our website for more information.

Table of Contents

| | |
|------------------------------------------------|-----------|
| Important Safeguards and Warnings | 1 |
| 1 Overview..... | 4 |
| 2 System Login | 5 |
| 2.1 Before Login | 5 |
| 2.2 System Login..... | 5 |
| 2.3 System Config Flow Chart..... | 5 |
| 3 System Config | 7 |
| 3.1 User Management..... | 7 |
| 3.1.1 Add User..... | 7 |
| 3.1.2 Delete User..... | 8 |
| 3.1.3 Batch Delete User..... | 8 |
| 3.1.4 Search User..... | 8 |
| 3.1.5 Modify User..... | 8 |
| 3.2 Organizational Structure..... | 8 |
| 3.3 Device Management..... | 10 |
| 3.3.1 Add Device..... | 11 |
| 3.3.2 Batch Add Device | 12 |
| 3.3.3 Modify/Delete Device..... | 12 |
| 3.4 Channel Management | 12 |
| 4 Operation Setting | 14 |
| 4.1 Call Group..... | 14 |
| 4.1.1 Add Group and Terminal..... | 14 |
| 4.1.2 Adjust Priority..... | 16 |
| 4.2 Access Control | 16 |
| 4.2.1 Authority Group Management | 17 |

| | |
|--------------------------|-----------|
| 4.2.2 Issue Card..... | 17 |
| 4.3 Access Control | 20 |
| 4.4 Card Review | 20 |
| 5 Log..... | 22 |

1 Overview

VTMS integrates embedding technology, computer integration, A/V encoding, network, Internet of things technology, based on “economic, open and reliable” principals. It combines video talk, video monitoring and entrance/exit management and etc., contributing to a new property management platform plus a new model for future profit and expansion.

This manual introduces configuration of system administrator, and please read this manual carefully before use.

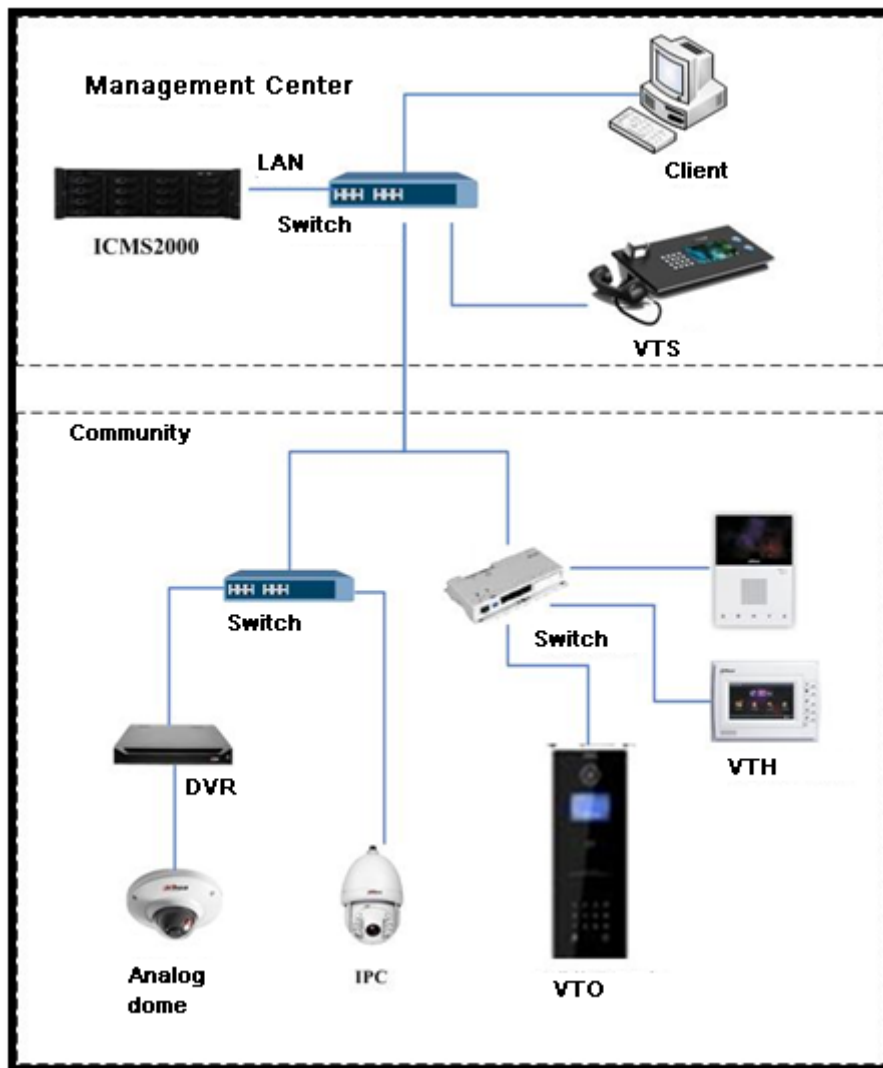


Figure 1- 1

2 System Login

2.1 Before Login

Confirm VTMS server is correctly connected to the Internet.
VTMS is correctly connected to device network.
VTMS is enabled.

2.2 System Login

Open Internet Explorer, in address field, input server IP address such as <http://serverIp:8787/admin>, and meanwhile replace server IP with IP of VTMS.

Input username and password, press Enter. System default admin and password is admin/123. See Figure 1- 1.

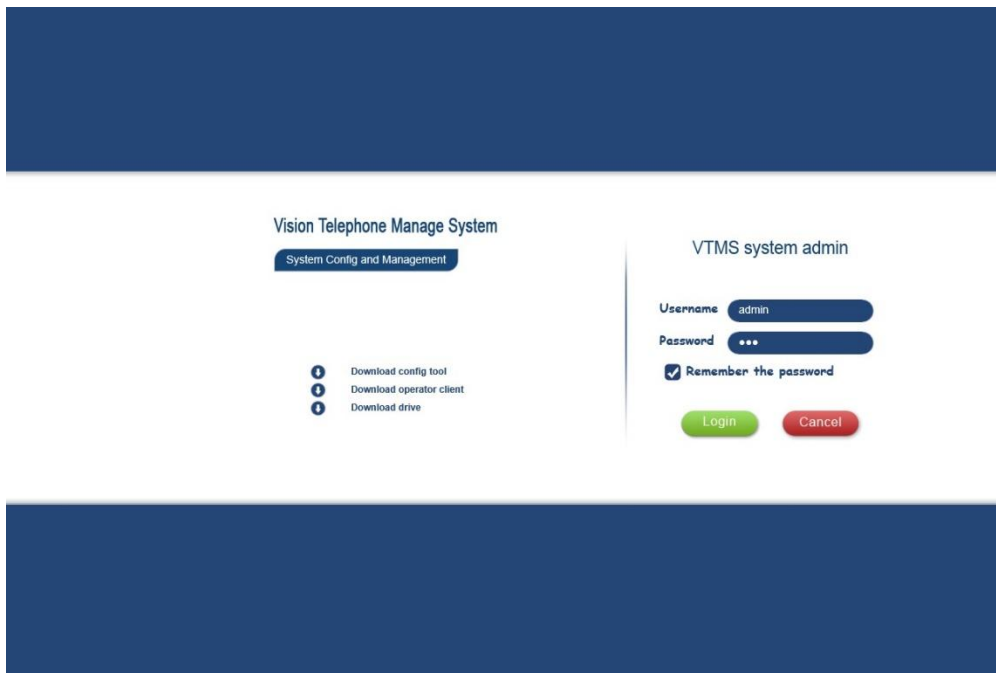


Figure 2- 1

2.3 System Config Flow Chart

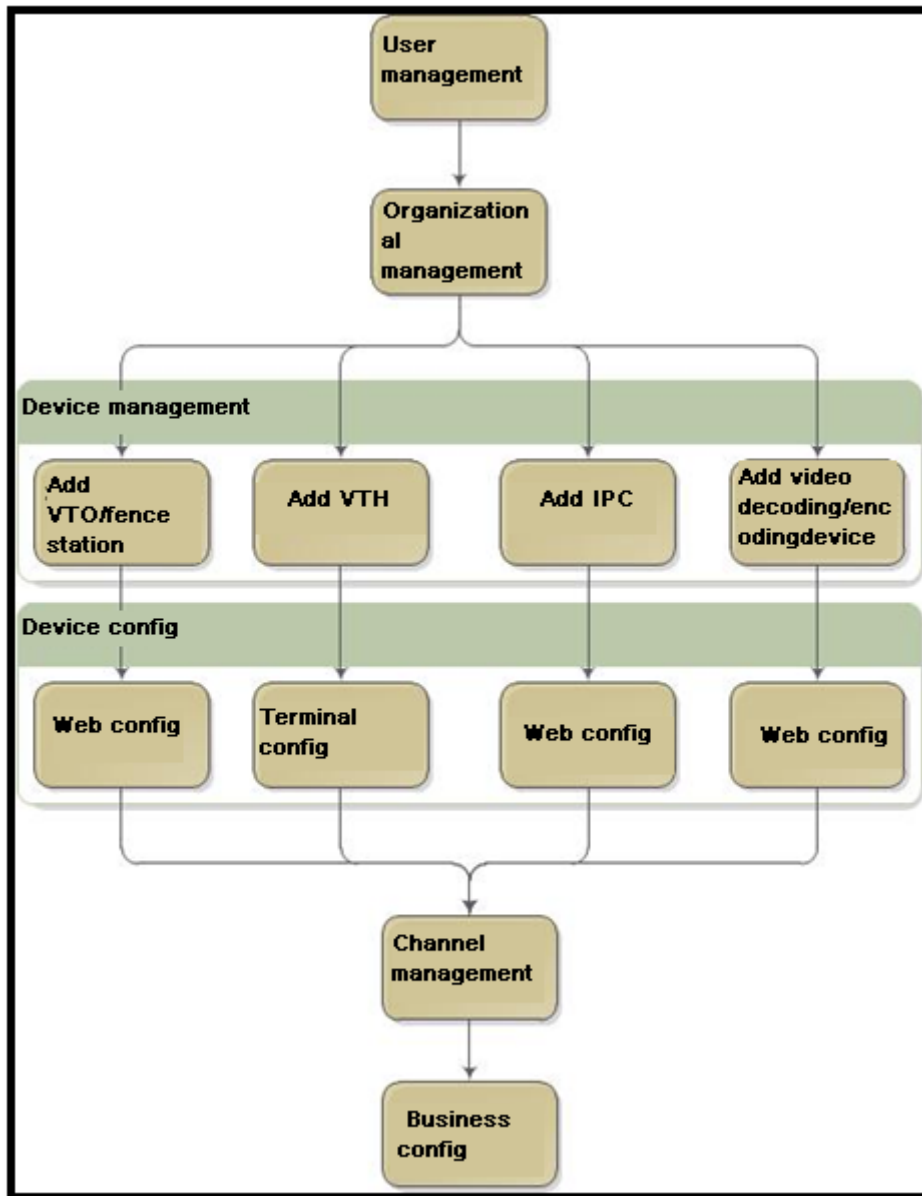


Figure 2- 2

3 System Config

Before using VTMS, you must config:

- User Management
- Organization Config
- Device Management
- Channel Management

3.1 User Management

User management includes add, delete, modify and etc. User includes admin and operator. Admin can config data on Manager and login Client with full rights. Operator can only login Client. You can set operator rights when you add operator.

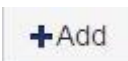
The system has one admin which cannot be deleted.

User management module is as Figure 3- 1.



| Serial | Username | User Type | Login IP | Status | Operation |
|----------------------------|----------|-----------|----------|---------|---------------------------------------------------|
| <input type="checkbox"/> 1 | fky | admin | - | offline | <input type="checkbox"/> <input type="checkbox"/> |
| <input type="checkbox"/> 2 | control | operator | - | offline | <input type="checkbox"/> <input type="checkbox"/> |
| <input type="checkbox"/> 3 | admin | admin | - | offline | <input type="checkbox"/> |
| | | | | | |
| | | | | | |
| | | | | | |
| | | | | | |
| | | | | | |
| | | | | | |
| | | | | | |
| | | | | | |

Figure 3- 1



3.1.1 Add User

- Click on  button.
- Fill in user info, select user type. Select info and add to default. Newly added user will be automatically added to default group.
- Click on OK.

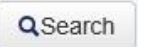
3.1.2 Delete User

- In Figure 3- 1 user list, select user to delete.
- Click on  on the right of record or  button.
- In pop-up box, click on OK to delete the user.

3.1.3 Batch Delete User

- In Figure 3- 1, check  in user list.
- Click on  on the right.
- In pop-up box, click on OK to batch delete the user.

3.1.4 Search User

- Input search criteria in the field above user status.
- Click on  button.

3.1.5 Modify User

- Select user in list.
- Click on  button.

3.2 Organizational Structure

Community structure has the following layers: community, building, unit and room. In VTMS, one server can only have one root directory via basic management---organizational page to add community structure. There are two ways to do it:

- Batch add
- Add

See Figure 3- 2.

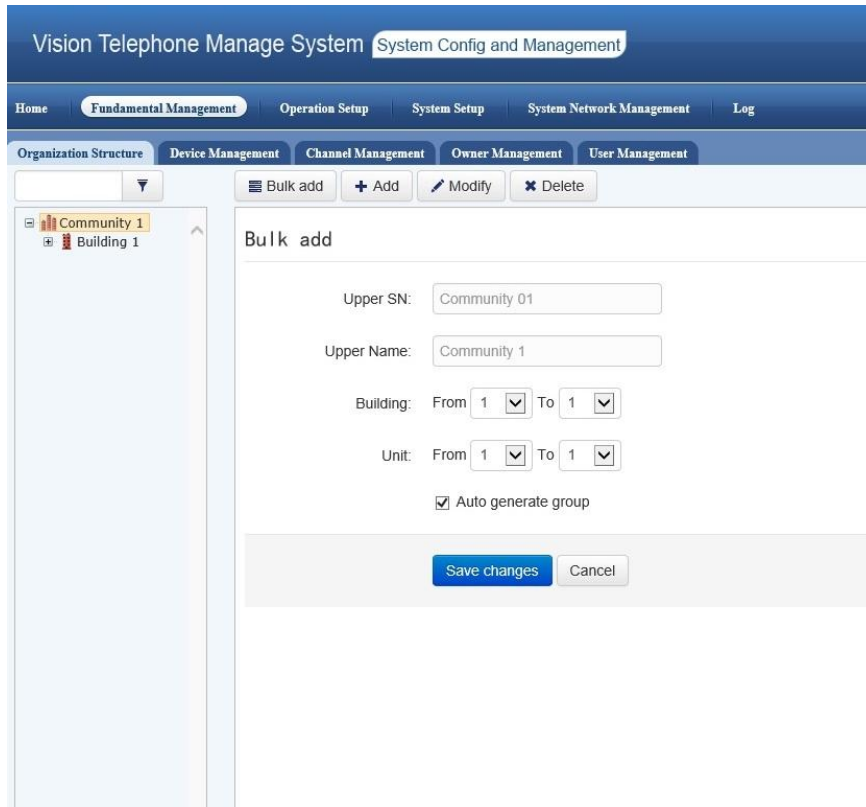


Figure 3- 2

- Via batch add, you can add multiple buildings to community at once or add multiple units to building at once. Select from A to B (building, unit). Added organizational structure will be automatically added to default group.
- Via add, you can add one building to a community at once or add one unit to a building at once. Fill in no., name , address and etc. Added organizational structure will be automatically added to default group.
- Modify button allow user to modify community, building and unit config.
- Delete button allows user to delete selected part as follows:

| Function | Mode | Step |
|---------------|-----------|---------------------------------------------------------------------------------------------------------------------------------------------------------|
| Add Community | Add | <ol style="list-style-type: none"> 1. Click on Add button. 2. Input community name and etc. 3. Click on save. |
| | Batch add | <ol style="list-style-type: none"> 1. Click on Batch add button. 2. Input community name and etc. 3. Click on save. |
| Add Building | Add | <ol style="list-style-type: none"> 1. Select community on the left. 2. Click on Add button. 3. Input config parameter. |

| | | |
|----------|-----------|------------------------------------------------------------------------------------------------------------------------------------------------------------------------------------------|
| | | 4. Click on save. |
| | Batch add | <ol style="list-style-type: none"> 1. Select community on the left. 2. Click on Batch add button. 3. Input config parameter. 4. Click on save. |
| Add Unit | Add | <ol style="list-style-type: none"> 1. Select building on the left. 2. Click on add button. 3. Input config parameter. 4. Click on save. |
| | Batch add | <ol style="list-style-type: none"> 1. Select building on the left. 2. Click on batch add button. 3. Input config parameter. 4. Click on save. |
| Modify | | <ol style="list-style-type: none"> 1. Select structure. 2. Click on modify button. 3. Modify parameter. 4. Save. |
| Delete | | <ol style="list-style-type: none"> 1. Select structure. 2. Click on delete. |

3.3 Device Management

VTMS configures and manages device via device management entry. Main devices include:

- Video talk device: fence station, VTO, analog VTH, digital VTH, VTS.
- Encoding device: DVR, IPC.
- Decoding device: decoder.
- Access control device: VTO, network to serial, access control extension module.

The following is device management page. On the left there is organizational structure tree. On the right there is added device list. Via the buttons above device list, we can add or delete device. See Figure 3-3.

| No. | Device Name | Device Type | Addr. | IP | status | Operation |
|--------------------------|-------------------------|-------------|-------------------------------|---------|---------|-----------|
| <input type="checkbox"/> | VTO 1,Unit 1,Building 1 | VTO | Unit 1,Building 1,Community 1 | 0.0.0.0 | Offline | Q / ✕ |
| <input type="checkbox"/> | VTO 1,Unit 2,Building 1 | VTO | Unit 2,Building 1,Community 1 | 0.0.0.0 | Offline | Q / ✕ |
| <input type="checkbox"/> | VTO 1,Unit 3,Building 1 | VTO | Unit 3,Building 1,Community 1 | 0.0.0.0 | Offline | Q / ✕ |
| <input type="checkbox"/> | VTO 1,Unit 1,Building 2 | VTO | Unit 1,Building 2,Community 1 | 0.0.0.0 | Offline | Q / ✕ |
| <input type="checkbox"/> | VTO 1,Unit 2,Building 2 | VTO | Unit 2,Building 2,Community 1 | 0.0.0.0 | Offline | Q / ✕ |
| <input type="checkbox"/> | VTO 1,Unit 1,Building 3 | VTO | Unit 1,Building 3,Community 1 | 0.0.0.0 | Offline | Q / ✕ |
| <input type="checkbox"/> | VTO 1,Unit 2,Building 3 | VTO | Unit 2,Building 3,Community 1 | 0.0.0.0 | Offline | Q / ✕ |
| <input type="checkbox"/> | VTO 1,Unit 1,Building 4 | VTO | Unit 1,Building 4,Community 1 | 0.0.0.0 | Offline | Q / ✕ |
| <input type="checkbox"/> | VTO 1,Unit 2,Building 4 | VTO | Unit 2,Building 4,Community 1 | 0.0.0.0 | Offline | Q / ✕ |
| <input type="checkbox"/> | VTO 1,Unit 1,Building 5 | VTO | Unit 1,Building 5,Community 1 | 0.0.0.0 | Offline | Q / ✕ |
| <input type="checkbox"/> | VTO 1,Unit 2,Building 5 | VTO | Unit 2,Building 5,Community 1 | 0.0.0.0 | Offline | Q / ✕ |
| <input type="checkbox"/> | VTO 1,Unit 1,Building 6 | VTO | Unit 1,Building 6,Community 1 | 0.0.0.0 | Offline | Q / ✕ |
| <input type="checkbox"/> | VTO 1,Unit 2,Building 6 | VTO | Unit 2,Building 6,Community 1 | 0.0.0.0 | Offline | Q / ✕ |

Figure 3- 3

3.3.1 Add Device

Step to add device is similar to the following:

- Click on add button in the upper right, select device type. There are mainly three types: talk device, encoding device and decoding device.
- Fill in config info. See Figure 3- 4.

Figure 3- 4

- Device no. is generated by the system, and do not input it.
- Device type can be selected from the dropdown list. VTH has analog and digital types and you can select on the right.
- Device name shall be filled in by user.
- Device address is filled by clicking on directory node at the left. VTS host can only be under

community node. If VTO is under community node, then it is treated as fence station. If VTO is under building or unit node, then it is treated as unit VTO. VTH can only be under unit node.

- Device IP and port shall refer to device user's manual.

➤ Click on save.

3.3.2 Batch Add Device

For large quantity of unit VTO and VTH, the system allow user to batch add them. Batch added devices' names are generated automatically by the system.

- Click on batch add VTO or batch add VTH button.
- Fill in config parameter.

See Figure 3- 5.

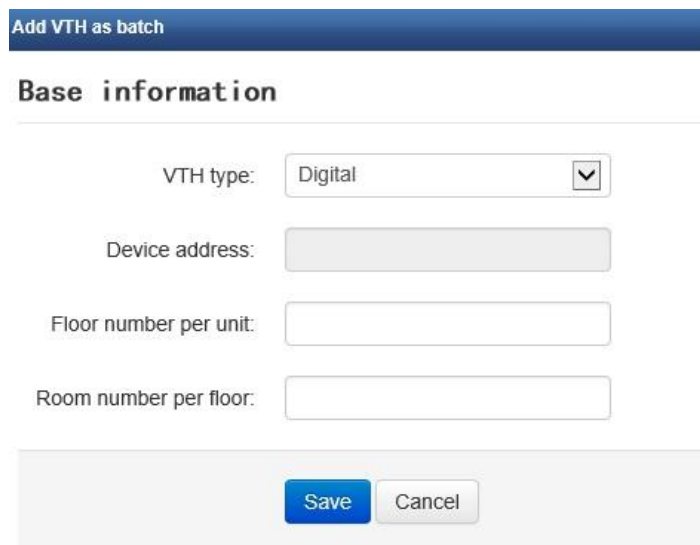


Figure 3- 5

- VTO: number of VTOs.
- Number of fence stations.
- VTH: VTH type, analog or digital.
- Device address, select in directory tree on the left. VTH can only select unit.
- Fill in info floor number of each building and room number of each unit according to actual condition.

➤ Click on save.

3.3.3 Modify/Delete Device

There is one operation entry next to each device in list, including view, modify and delete. User can modify and delete device here.

3.4 Channel Management

In channel management, VTO device will automatically add default channel. We usually manually add camera channel to video encoding device. Currently, VTMS support fixed camera and speed dome and you can add them in similar steps as follows:

Channel management page is shown in Figure 3- 6.

| No. | Channel Name | Channel Type | Addr. | Application | Operation |
|-----|---------------------------|--------------|-------------------------------|-------------|-----------|
| 1 | VTO 1,Unit 1,Building 1-1 | Door | Unit 1,Building 1,Community 1 | ACC App | Q / ✕ |
| 2 | VTO 1,Unit 2,Building 1-1 | Door | Unit 2,Building 1,Community 1 | ACC App | Q / ✕ |
| 3 | VTO 1,Unit 3,Building 1-1 | Door | Unit 3,Building 1,Community 1 | ACC App | Q / ✕ |
| 4 | VTO 1,Unit 1,Building 2-1 | Door | Unit 1,Building 2,Community 1 | ACC App | Q / ✕ |
| 5 | VTO 1,Unit 2,Building 2-1 | Door | Unit 2,Building 2,Community 1 | ACC App | Q / ✕ |
| 6 | VTO 1,Unit 1,Building 3-1 | Door | Unit 1,Building 3,Community 1 | ACC App | Q / ✕ |
| 7 | VTO 1,Unit 2,Building 3-1 | Door | Unit 2,Building 3,Community 1 | ACC App | Q / ✕ |
| 8 | VTO 1,Unit 1,Building 4-1 | Door | Unit 1,Building 4,Community 1 | ACC App | Q / ✕ |
| 9 | VTO 1,Unit 2,Building 4-1 | Door | Unit 2,Building 4,Community 1 | ACC App | Q / ✕ |
| 10 | VTO 1,Unit 1,Building 5-1 | Door | Unit 1,Building 5,Community 1 | ACC App | Q / ✕ |
| 11 | VTO 1,Unit 2,Building 5-1 | Door | Unit 2,Building 5,Community 1 | ACC App | Q / ✕ |
| 12 | VTO 1,Unit 1,Building 6-1 | Door | Unit 1,Building 6,Community 1 | ACC App | Q / ✕ |
| 13 | VTO 1,Unit 2,Building 6-1 | Door | Unit 2,Building 6,Community 1 | ACC App | Q / ✕ |

Figure 3- 6

- Click on add button (in the upper right).
- Select fixed camera or speed dome.
- Fill in config parameter.
- Save.

4 Operation Setting

The first two chapters introduces device connection and config, and to properly use VTMS's video talk and access control functions, user shall perform some operation settings.

This chapter mainly introduces operation settings of client which includes two parts.

1. Call group
 - There is only one VTS for a community, but VTMS supports login of multiple users on different PCs. How to make a call of user reach a certain operator? You will need call group function.
2. Access Control Management
 - VTMS integrates UCMS which has talk, a&c, monitoring functions. Besides issuing card, authorizing, reporting loss, cancelling, it can connect to VTO, extension, VTS and swipe card, snapshot, call, remotely unlock, announce and etc.

4.1 Call Group

Call group have two concepts: group and terminal. We add community layer into group (entire community or certain buildings); terminal is the server terminal of community. Group member create communication by binding terminal.

Figure 4- 1 is group call interface. On the left there is group list. On the right there is bound terminal list.

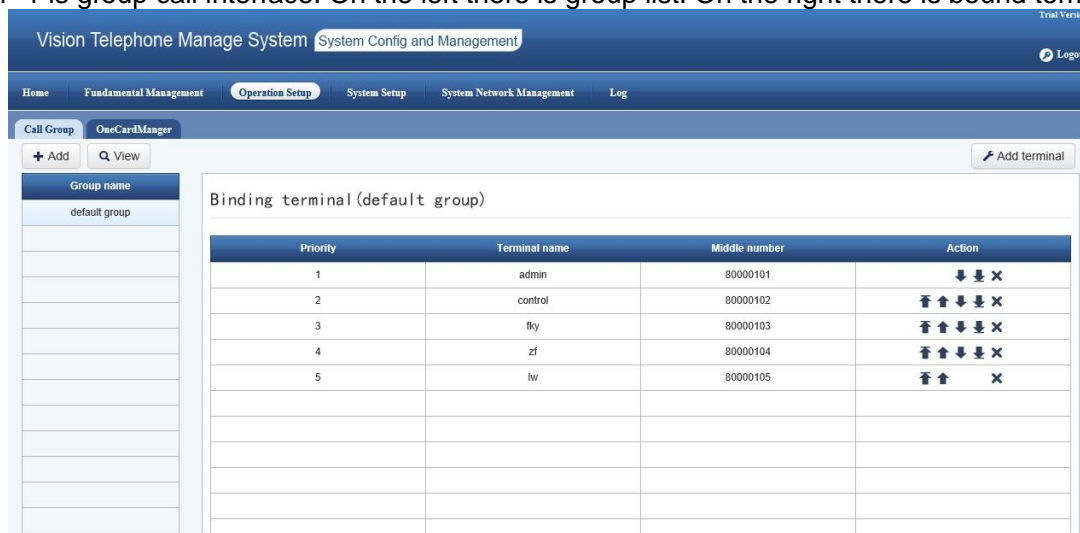


Figure 4- 1

4.1.1 Add Group and Terminal

- Add Group
 - Click on add button on the left.
 - Fill in group name, add building to group. See Figure 4- 2.
 - Save.

Add group

Group name:

Buildings:

Search:

| | | |
|------------------------|---|----------|
| Building 1,Community 1 | » | Selected |
| Building 2,Community 1 | » | |
| Building 3,Community 1 | « | |
| Building 4,Community 1 | « | |
| Community 1 | | |

Figure 4- 2

- Bind Terminal
 - Select group on the left.
 - Click on add bound terminal button.
 - Select terminal, and move it to the right. See Figure 4- 3.
 - Save
- You can adjust terminal priority on bound terminal page (via button on the very right).

Binding terminal (default group)

Binding terminal:

Search:

Selected

admin
control
fky
zf
lw

>

>>

<

<<

Sort

Top

Up

Down

Bottom

Save changes

Cancel

Figure 4- 3

4.1.2 Adjust Priority

A group of member can bind multiple terminals. To avoid conflict, we set priority for each terminal. When a group has call, the call will be forwarded to online terminal with the highest priority. When this terminal is busy, the call automatically goes to next.

As in Figure 4- 4, the sequence of terminal is their priority. Each group's corresponding bind terminal has a set of buttons: move to top, move up one, move down one and move to bottom. Each terminal has four buttons, except the most top and bottom ones only have two.

Via these buttons, user can adjust their priority.

| Priority | Terminal name | Middle number | Action |
|----------|---------------|---------------|-----------|
| 1 | admin | 80000101 | ↓ ↓ × |
| 2 | control | 80000102 | ↑ ↑ ↓ ↓ × |
| 3 | fky | 80000103 | ↑ ↑ ↓ ↓ × |
| 4 | zf | 80000104 | ↑ ↑ ↓ ↓ × |
| 5 | lw | 80000105 | ↑ ↑ × |

Figure 4- 4

4.2 Access Control

4.2.1 Authority Group Management

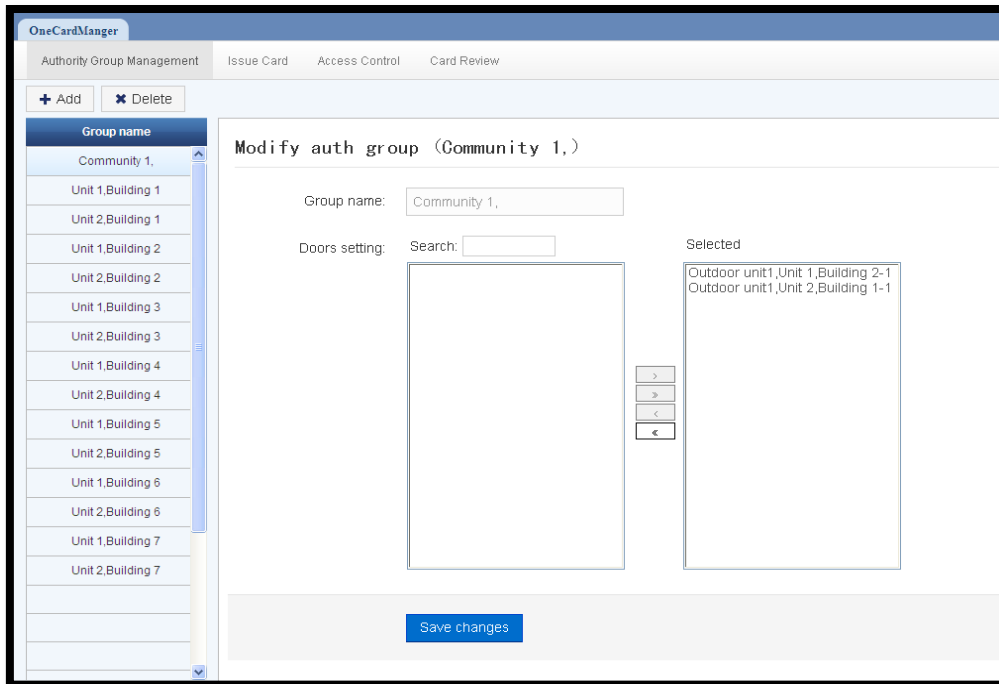


Figure 4- 5

- System will generate authority group according to the organizational structure. User can also manually add, delete authority group. By selecting authority group, user can add corresponding door.

4.2.2 Issue Card

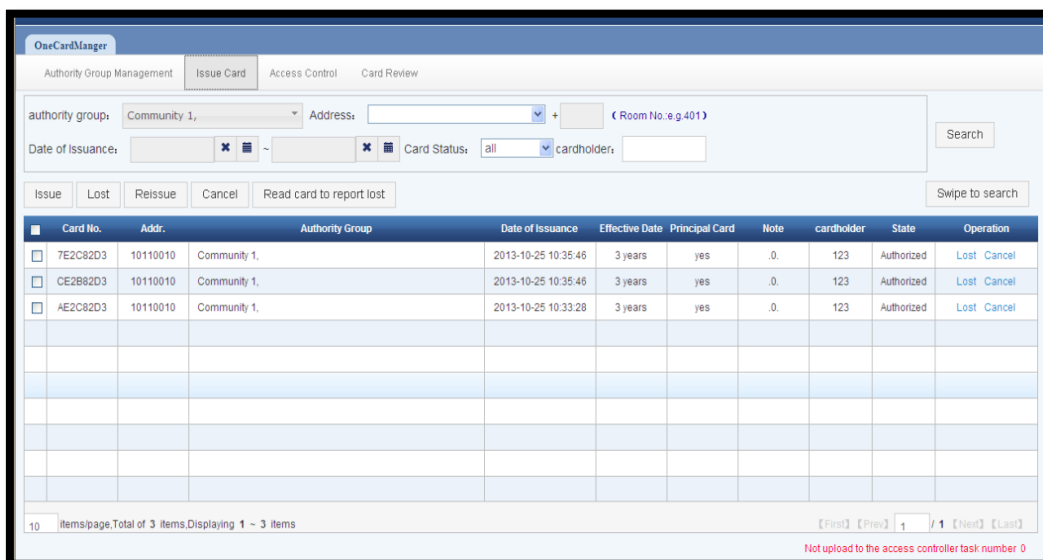


Figure 4- 6

Figure 4- 6 is Issue Card interface. Here you can issue, report card loss, reissue, cancel, read card to

report loss, and swipe to search. The following sections introduce these functions.

4.2.2.1 Issue Card

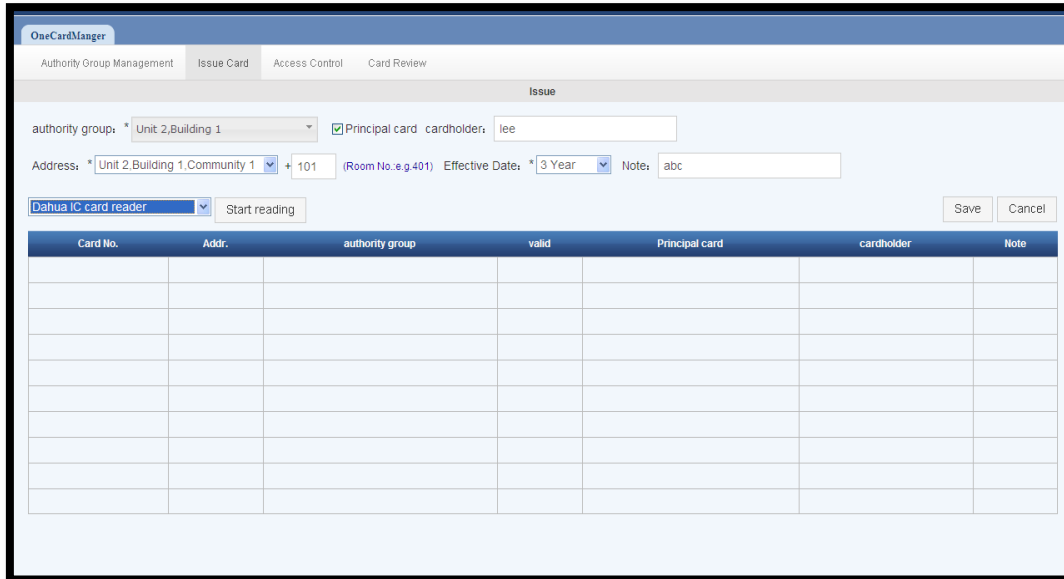


Figure 4- 7

- Click on Issue Card tab to enter above interface. User can select authority group, card address, fill in room no. via dropdown list. Check Principal card if you want to make current card master card. Fill in cardholder name, and select effective date, add note. Then check is card issuer is correctly connected, and click on Start reading button to issue card.

4.2.2.2 Search, report loss, reissue and cancel

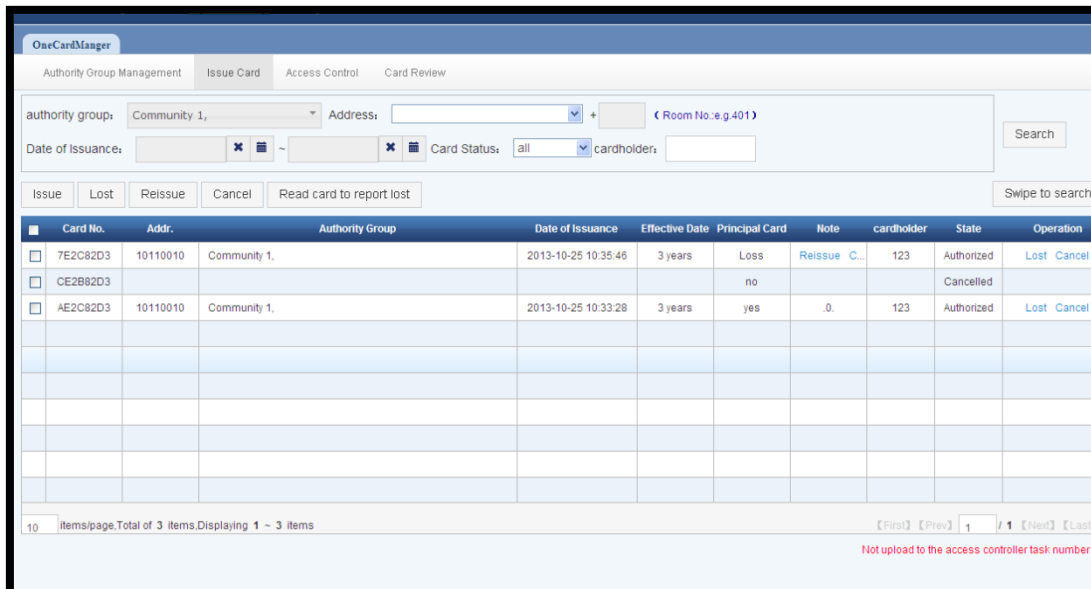


Figure 4- 8

- Search: Select authority group, address via dropdown list. Click on Search button to search corresponding card info.

- Lost, cancel: Search card info of corresponding authority group, user can click on lost and cancel button to report card loss and cancel.
- Reissue: User can reissue card that was reports as lost by clicking on reissue button.

4.2.2.3 Read Card to Report Loss

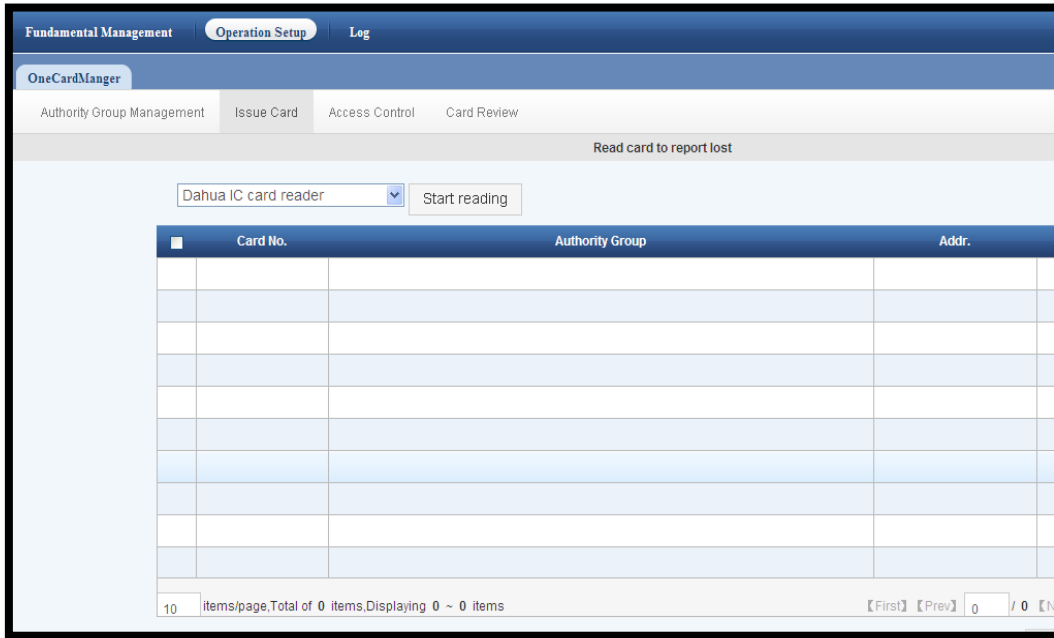


Figure 4- 9

- In main interface, click on read card to report loss button, user enter above interface. Check if card issuer is properly connect, and click on Start reading button.
- Read card to report loss: Each member in a household has his/her own card, so when one member loses his/her card, the other members' cards can be swiped to report lost of the lost card.

4.2.2.4 Card Inquiry

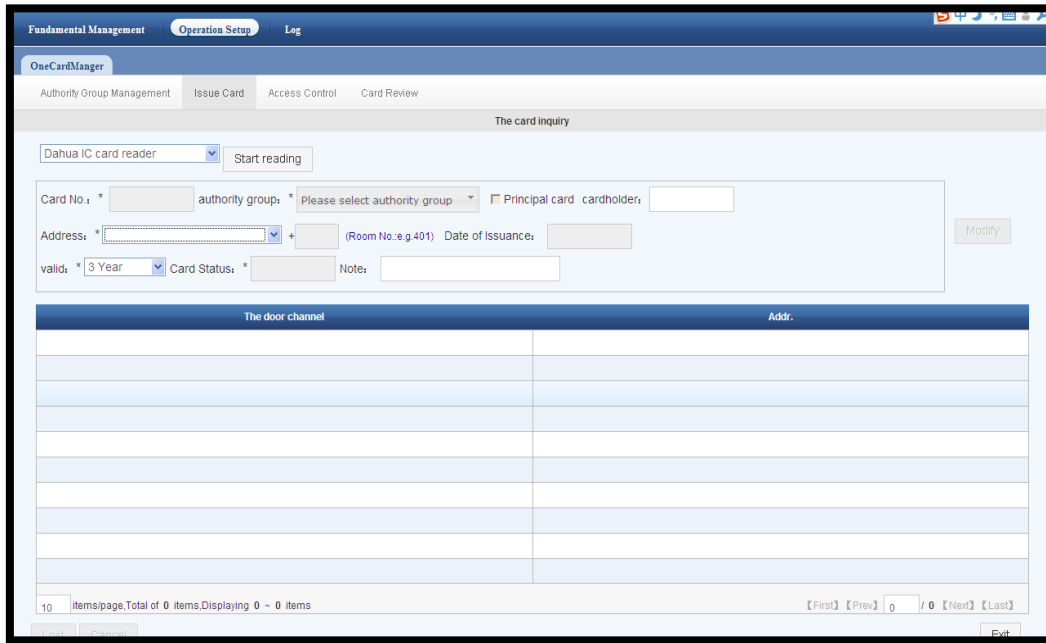


Figure 4- 10

- Click on issue card search button to enter the above interface. Check if card issuer is properly installed, and click on Start reading button.

4.3 Access Control

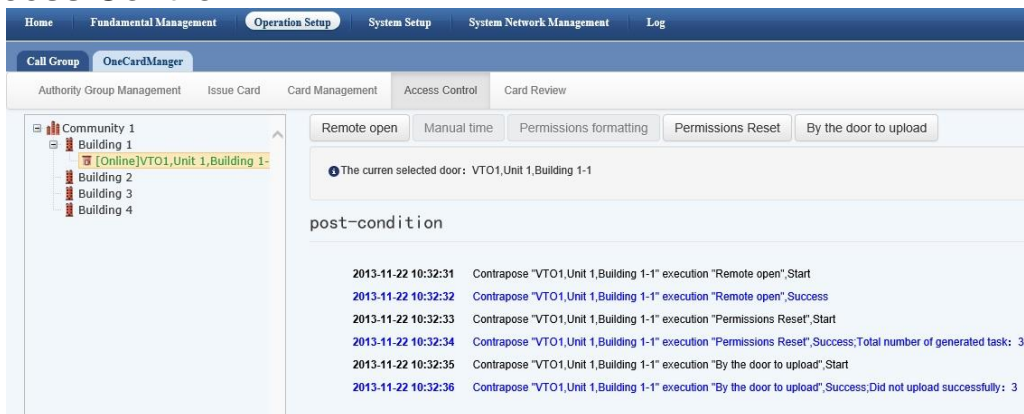


Figure 4- 11

- As shown above, select online VTO device in organizational structure. User can remotely operate VTO with the following functions:
 - Remotely unlock
 - Manual time sync
 - Format authority
 - Upload by door

4.4 Card Review

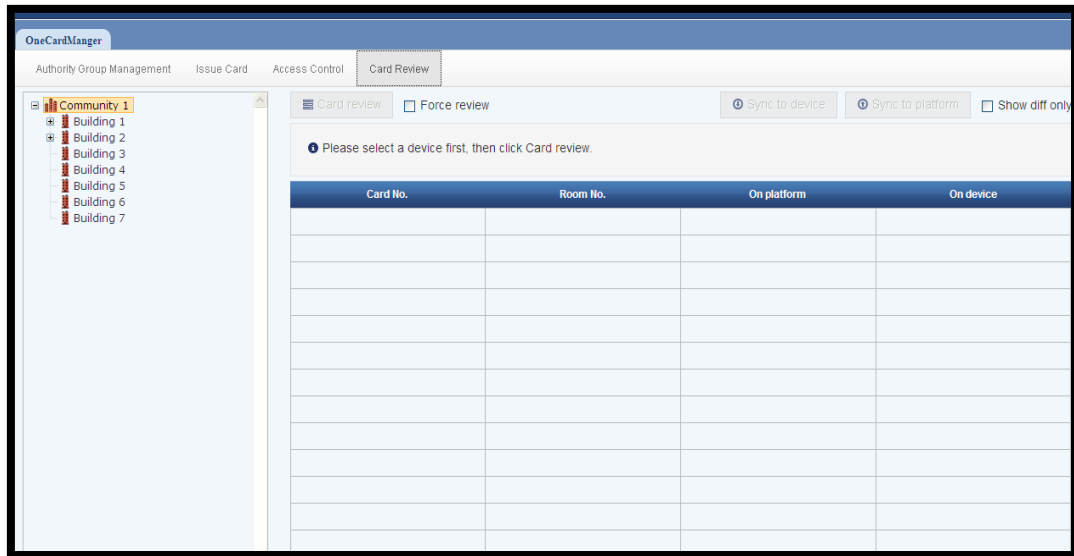


Figure 4- 12

- The objective of card review is to sync card authorization info on UCMS with VTO. Therefore before sync, we must confirm card authorization info. First as the above figure, user shall select VTO to review in organizational structure, and then check Force review box. Click on card review button to review. After successfully reviewed, user can click on Sync to device and Sync to platform to make info consistent with device and platform.

5 Log

VTMS config and Manager mainly show two types of info:

- System network management
- Log

Detailed display info refer to:

| | Info Type | Display Info |
|---------------------------|-------------------|----------------------------------------------|
| System Network Management | Device status | Device basic info; device is online/offline. |
| | User status | User basic info; user s online/offline.. |
| Log | Alarm log | Alarm record |
| | Device status log | Device login/logout record |
| | User status log | User login/logoff record |