

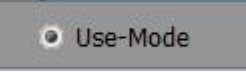




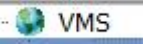
**Network Video Monitor Software
V2.0.1.6**

user manual

Updated date: 2016-06-22

Contents

1	Product Overview.....	1
1.1	Overview.....	1
1.2	System operation environment.....	1
2	Software Introduction.....	1
2.1	Video preview and recording.....	6
2.1.1	Right mouse button for devices /channels.....	7
2.1.2	Right mouse button for windows.....	7
2.1.3	Single preview windows toolbar.....	8
2.1.4	Total video preview windows toolbar.....	9
2.1.5	Device video group polling.....	9
2.1.6	PTZ.....	9
2.1.6.1	PTZ control.....	9
2.1.6.2	Preset.....	10
2.1.6.3	Cruise.....	11
2.1.6.4	Param.....	11
2.1.7	Preview window video image electronic zoom.....	12
2.2	Video playback.....	12
2.2.1	Local video search.....	12
2.2.2	video playback operation.....	13
2.2.3	Record download.....	14
2.2.4	Tool bars.....	14
2.2.5	Playback image electronic amplification.....	14
2.3	Electronic map/ Configuration map.....	14
2.3.1	Add map.....	16
2.3.1.1	Right-click on map name.....	16
2.3.1.2	Right-click on  /  icon.....	17
2.3.2	Electronic map 	17
2.3.2.1	Right mouse click on  /  icon.....	18
2.4	TV -Wall.....	18
2.4.1	TV-wall daily.....	20
(1)	Video image resolution.....	21
(2)	The following icon functions of output screen.....	21
2.4.1.1	Decoder preview.....	22
2.4.1.2	Decoder rotation.....	23
2.4.2	TV-wall playback.....	24
2.5	Log.....	26
2.5.1	Alarm logs.....	26
2.5.2	Operation logs.....	27
2.5.3	Remote logs.....	27

2.6 configuration.....	27
2.6.1 Device manage.....	27
2.6.1.1 Right mouse click on  icon.....	28
2.6.1.2 Access controller.....	30
2.6.1.3 Remote configuration.....	33
2.6.1.4 Right click to add group node.....	33
2.6.2 local config.....	34
2.6.3 users manage.....	35
2.6.4 alarm linkage.....	37
2.7 All protocol products function parameters.....	38

1 Product Overview

1.1 Overview

Network video monitoring software is a centralized management software for I8 protocol surveillance devices which include NVR, DVR, IPC, MDI, SDI, etc. It support video preview, playback, electronic map, TV wall, Log, configuration and other kinds of functions, greatly promoted the users supervision and control.

Each PC only support one software operation, it is free for I8 protocol products access, it is free for 16 PCS ONVIF protocol products access. Other protocol products access need authorization (Without authorization, it only support 1 product access).

Note: After authorization, the automatically memory function let the accessed devices number recorded, users have to delete the recorded channels information as the front devices log out.

1.2 System operation environment

Operation system: Microsoft Windows XP or later

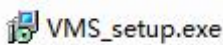
CPU: Intel(R) Celeron(R) CPU E3400 @2.6GHZ or later

HDD: 2G or later

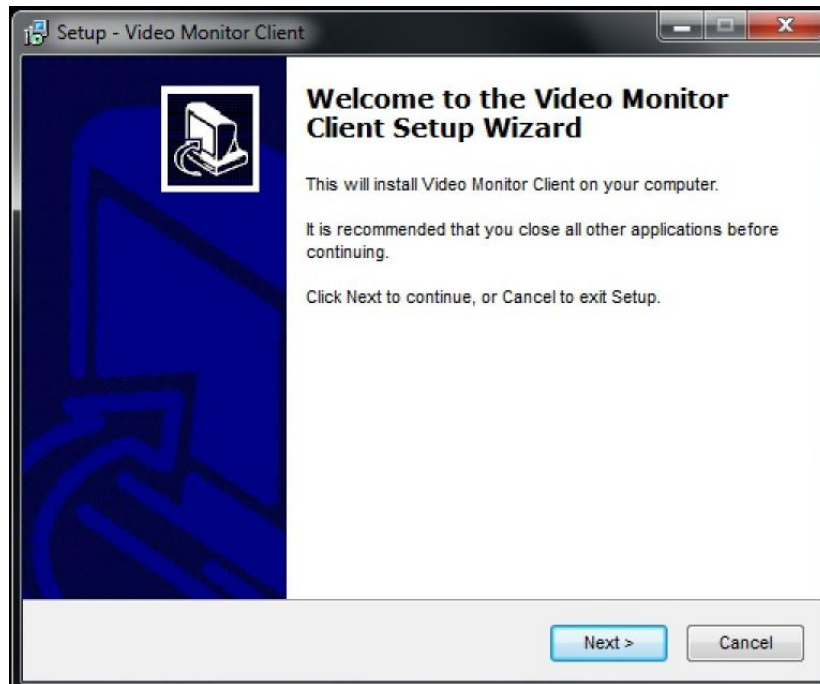
Network: Gigabit network interface controle for PC, Gigabit network for interchanger


2 Software Introduction

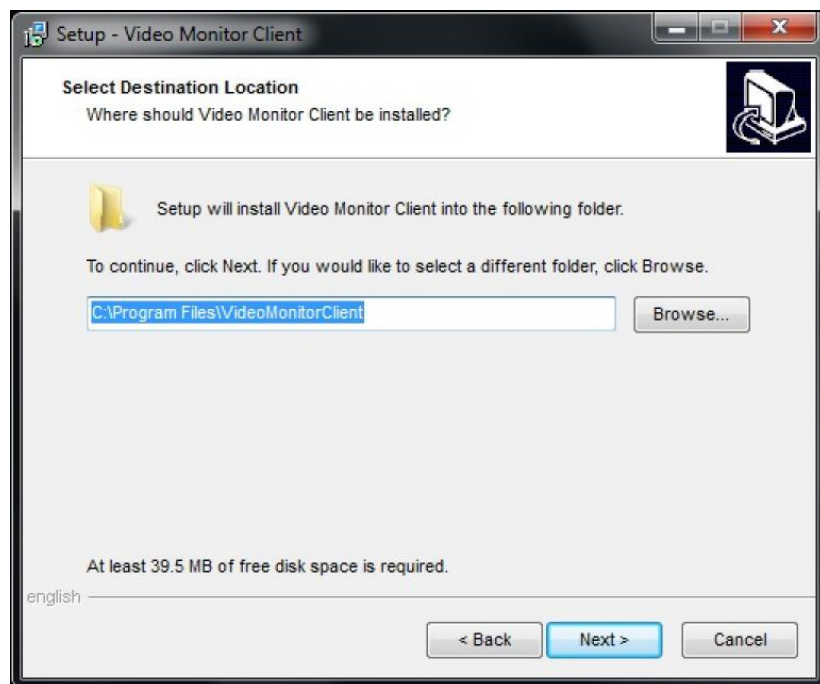
Installation instruction

Double click installation program icon  to operate the software, and the below interface will pop out, select the language version, and click "OK":

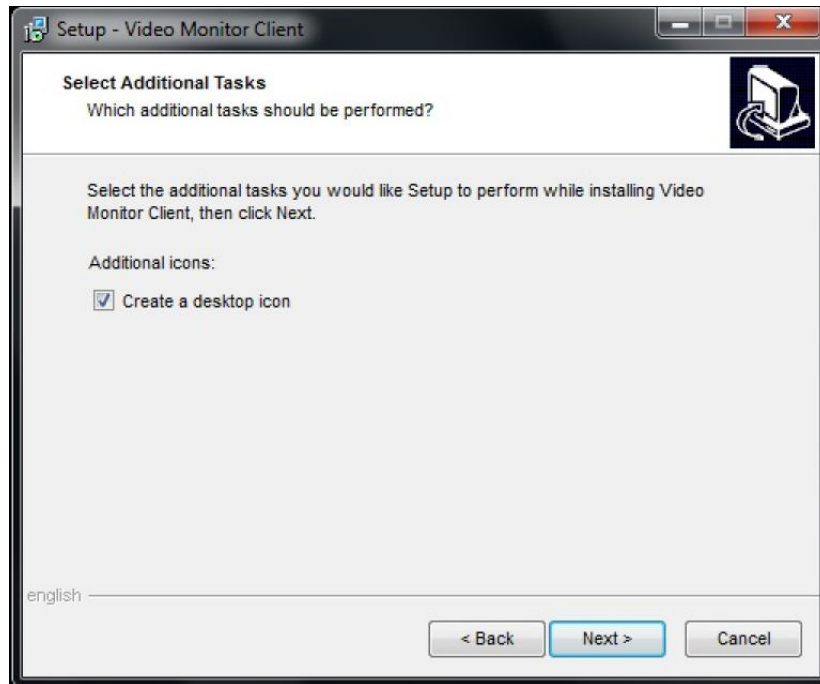




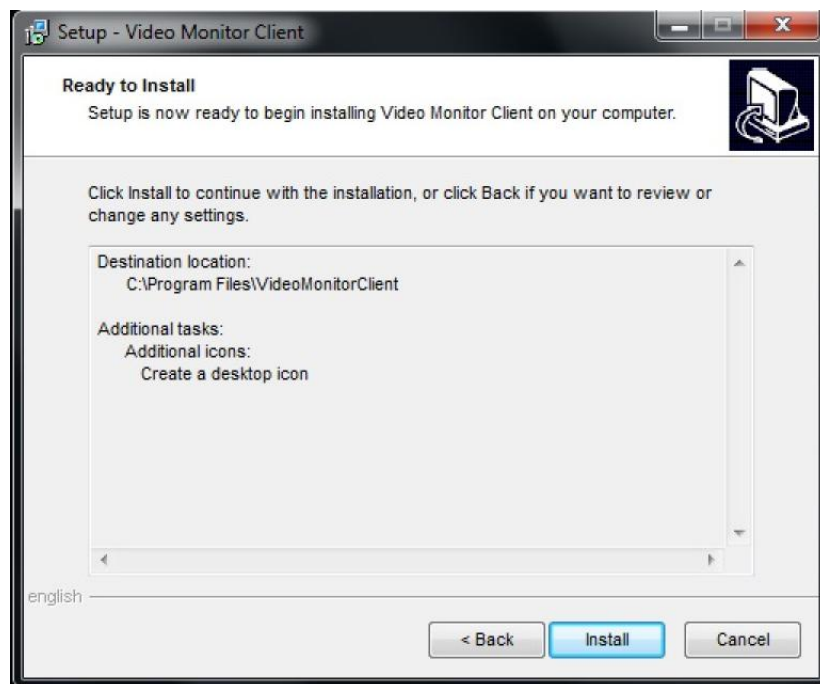
Click **Next** to go to store location selection interface, users can click  to select the store location file:

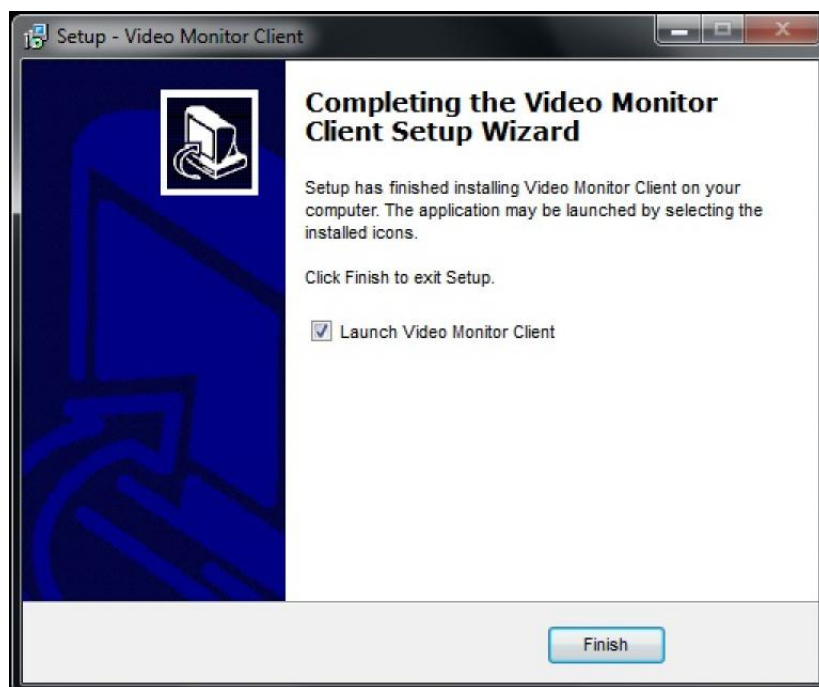
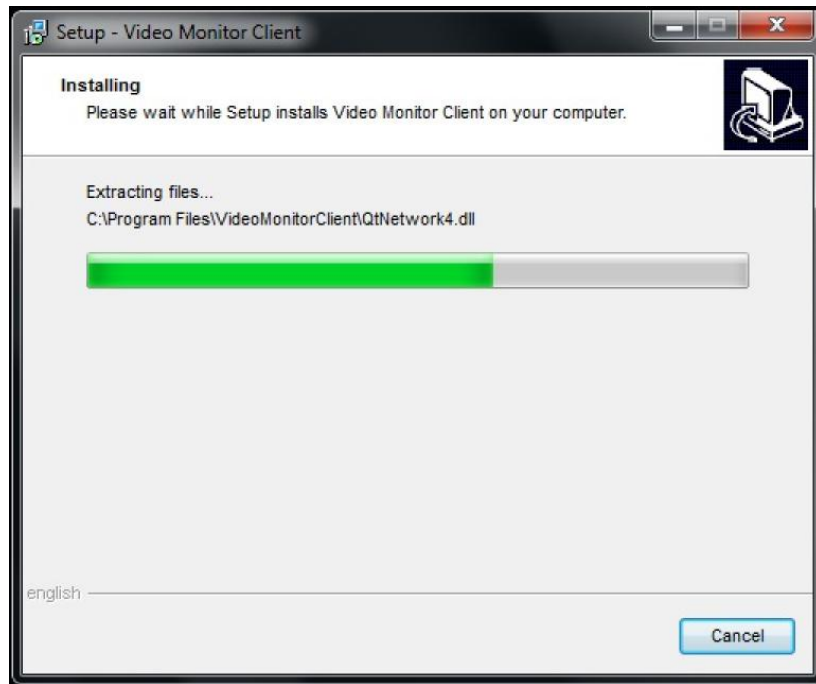


Click **Next**, and the below interface will pop out, it will convenient to select **Create a desktop icon**:




Click **Next**, it will create a desktop icon and then click **Install**, meanwhile software installation running.



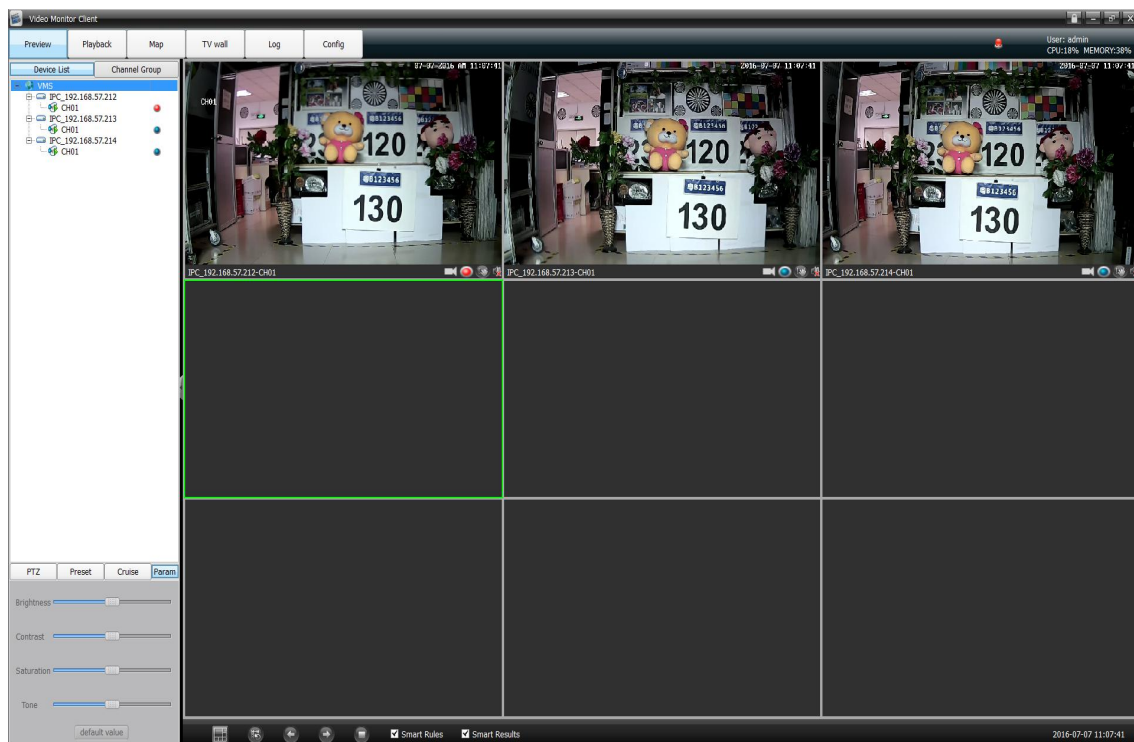


Click Finish to complete installation.

After software installation successfully, click the corresponding desktop icon  to operate it. The follow interface will pop out, input user name and password (Default User name is admin, password is blank) to log in. Any modification for ADMIN please go to client-side to handle:



As log in the main interface, it divide into 6 modules include **Preview**, **Playback**, **Map**, **TVwall**, **Log**, **Config**:





CPU:43% MEMORY:72% is the computer CUP and In-memory data,  means lock VMS interface,  Can be enlarged or reduced VMS interface,  means alarm information coming, and the details alarm information as below:

	time	type	source	remark	state
1	2014-10-17 17:50:39	AlarmInput	CMS-NVR_12.120.130.248-NetAlarmIn1		Alarm Begin
2	2014-10-17 17:50:40	AlarmInput	CMS-NVR_12.120.130.248-NetAlarmIn2		Alarm Begin

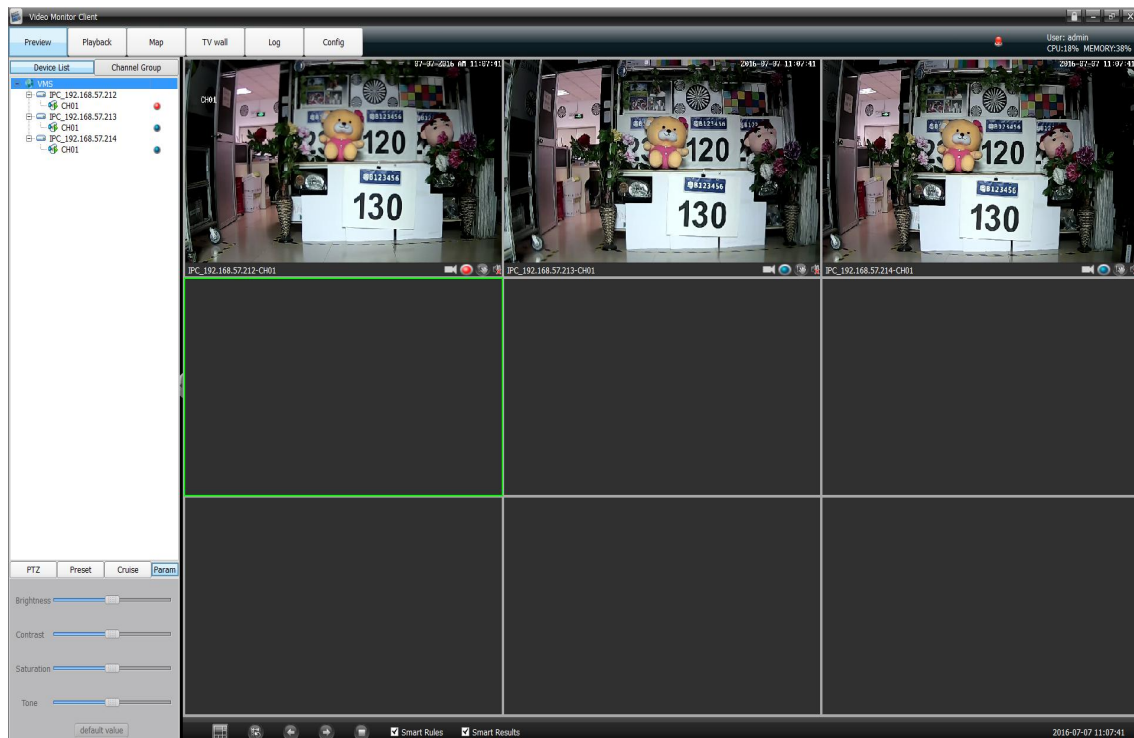
User: admin

is the current client logged in user.



Note: When you have to log out, please click  icon at the displayer right corner, it is useless to click  icon at top right corner.

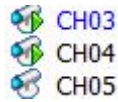
2.1 Video preview and recording

Double click the selected device address information at the left list, and the device corresponding channels will come out, double click the selected channel or drag the selected channel to right window to open the video preview(There is a triangle icon at the channel number left when the corresponding channel device operation). See as below:



2.1.1 Right mouse button for devices /channels

- Channels status
 - 1) There is a same circle icon behind the channel number and the preview window right corner, blue icon  means video recording not open, red icon  means video recording open.
 - 2) When you selected the video preview window, the corresponding channel number on left list will turn

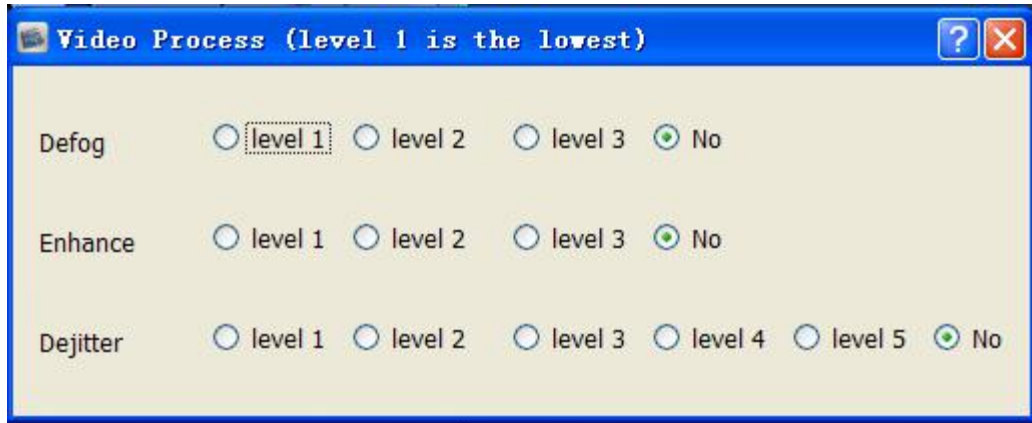


blue. As figure

- Right mouse button for devices
 - 1) Open all preview
Click right mouse button at device to select open all video preview
 - 2) Close all preview
Click right mouse button at device to select stop all video preview
 - 3) Open all record
Click right mouse button at device to select and then start all channel devices video recording
 - 4) Close all record
Click right mouse button at device to select close all channel devices video recording
 - 5) All channel main stream
Select the devices, set all channel video images mode to main stream
 - 6) All channel sub-stream
Select the devices, set all channel video images mode to sub stream
 - 7) Start/stop intercom

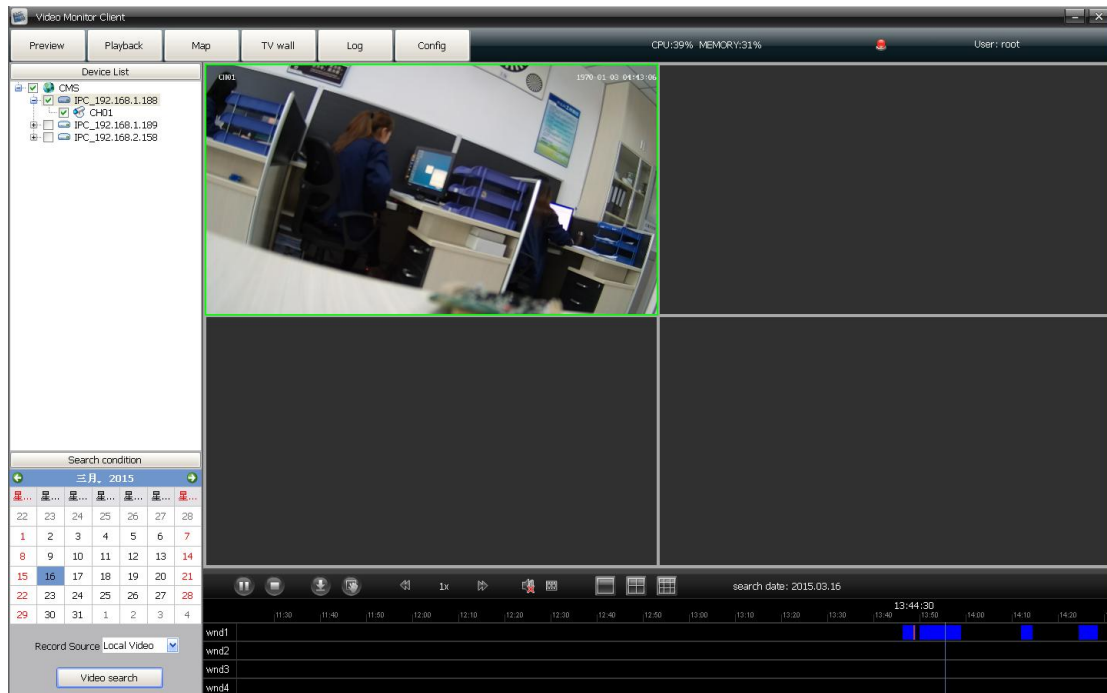
2.1.2 Right mouse button for windows

- 1) Stop preview
Click right mouse button to stop the selected window video preview
- 2) Capture
Click right mouse button to do real-time capture for preview interface, and then store the capture file to specified directory
- 3) Start/ Stop record
Click right mouse button to start or stop the the corresponding channel local video recording
- 4) Open/ Close sound
Click right mouse button to set open or close the corresponding channel audio preview(There are only support opening one channel sound simultaneously)
- 5) Stop all preview/ tour
Click right mouse button to stop all video preview or group tour preview
- 6) Full screen/ Exit full screen
- 7) Image process



There are defog, image enhance, dejitter functions.

- 8) Enable 3D Positioning
- 9) Click right mouse button to select enable 3D positioning or not
- 10) Playback



There is the video playback interface, More details for operation steps please refer to **video playback** module introduction.

2.1.3 Single preview windows toolbar

show the device name at the toolbar left, gray icon means front device does not do video recording (Green icon means front device is doing video recording), blue icon means local channel does not do video recording (red icon means local channel is doing video recording), means capture, means open or close the sound.

2.1.4 Total video preview windows toolbar



respectively is Set split-screen, Start/ Stop

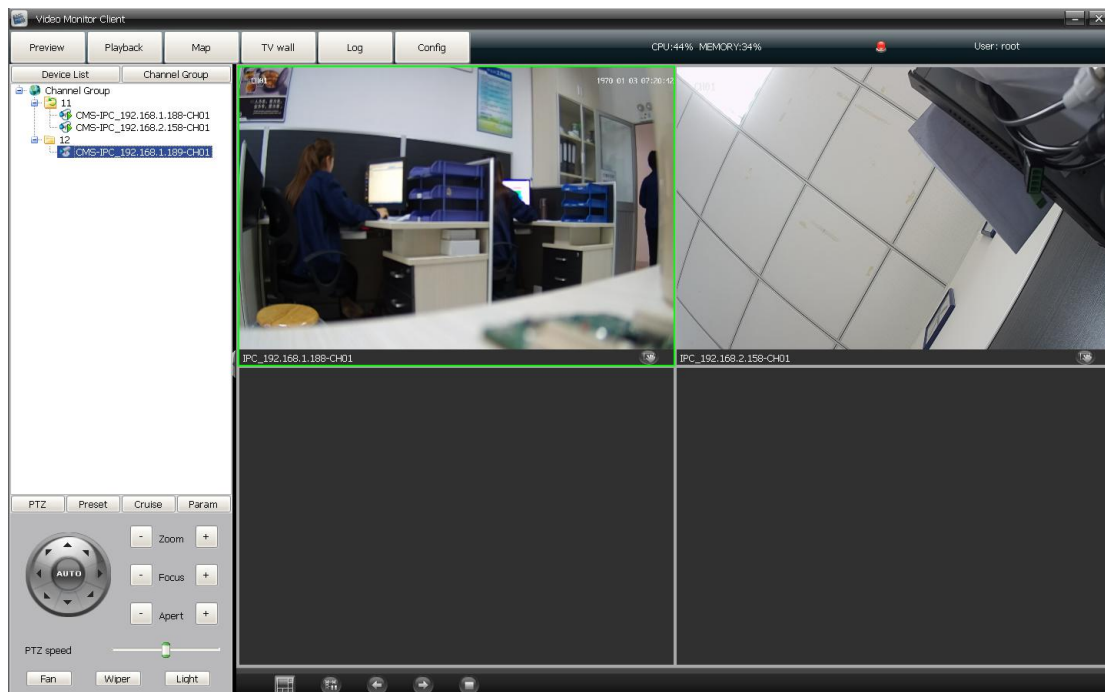
polling, Last group, Next group, Stop all preview/ Polling.

2.1.5 Device video group polling

Add two or more then two channels video to compose a group(More details for operation steps please



refer to **Config** module introduction), Click icon to start group video polling. As figure below:



Click the icon once again to stop group video polling, Click icon to close group video polling.



2.1.6 PTZ

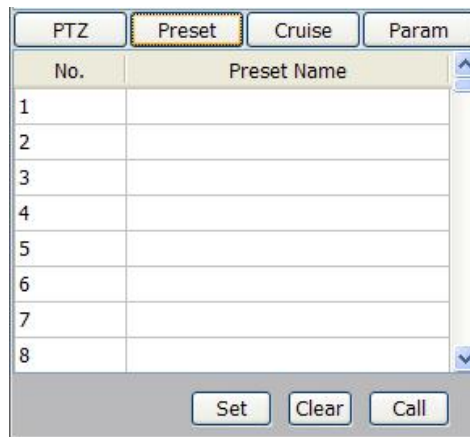
2.1.6.1 PTZ control

Click **PTZ** , it control the camera lens 8 directions respectively is Up, Down, Left, Right, Up left, Down left, Up right, Down right, Zoom +/-, Focus+/-, Apert +/-, PTZ speed, Light, Wipers, Fan. As figure below:

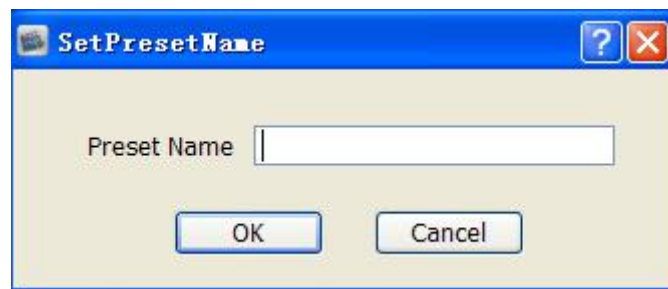


2.1.6.2 Preset

Click **Preset** to enter into preset setting interface:



Turn the camera lens to appointed location, and select the serial number, click **Set** and there is a "Set Preset Name" interface pop out, edit preset name and click **OK**.



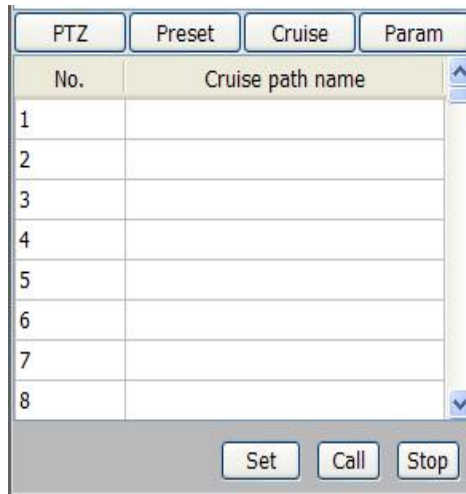
If you want to modify the preset location, turn the camera lens to appointed location directly and click **Set** to change and save it. Total configurable presets depend on front device supporting.

Click **Clear** to delete the setted preset

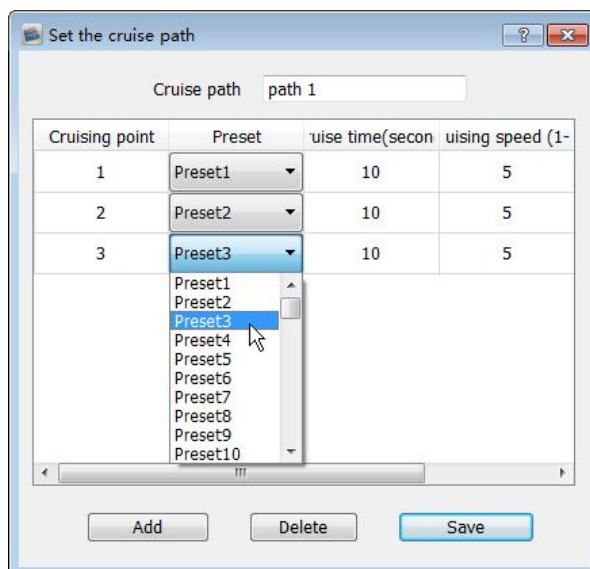
Select the serial number and click **Move to**, the camera will go to the corresponding setted location directly.

2.1.6.3 Cruise

Click **Cruise** to enter into preset setting interface:



Select a serial number and click **Set**, the below interface will pop out:



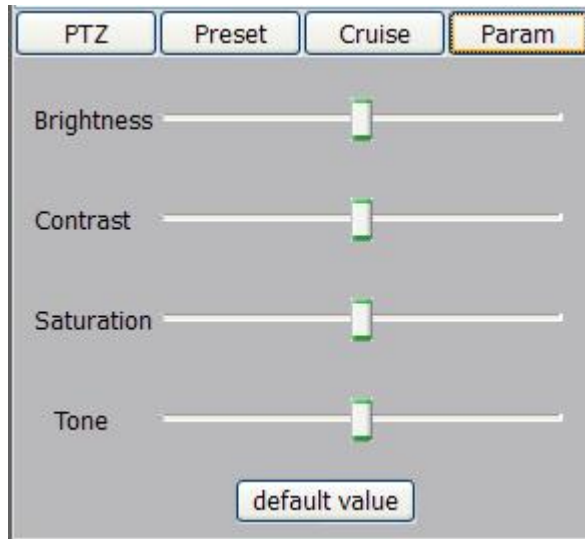
Input the cruise name, click **Add**, and select the specified preset, then set the cruising time and speed. Repeat above operation to add the second and third cruising point, configurable cruise point numbers depend on front device supporting.

Select the cruising point number and click **Delete** to delete the corresponding cruising point,

After complete the setting, click **Save**. Click **Call** to start cruising, and click **Stop** to close the cruising.

2.1.6.4 Param

Click **Param** to enter into parameters setting interface:



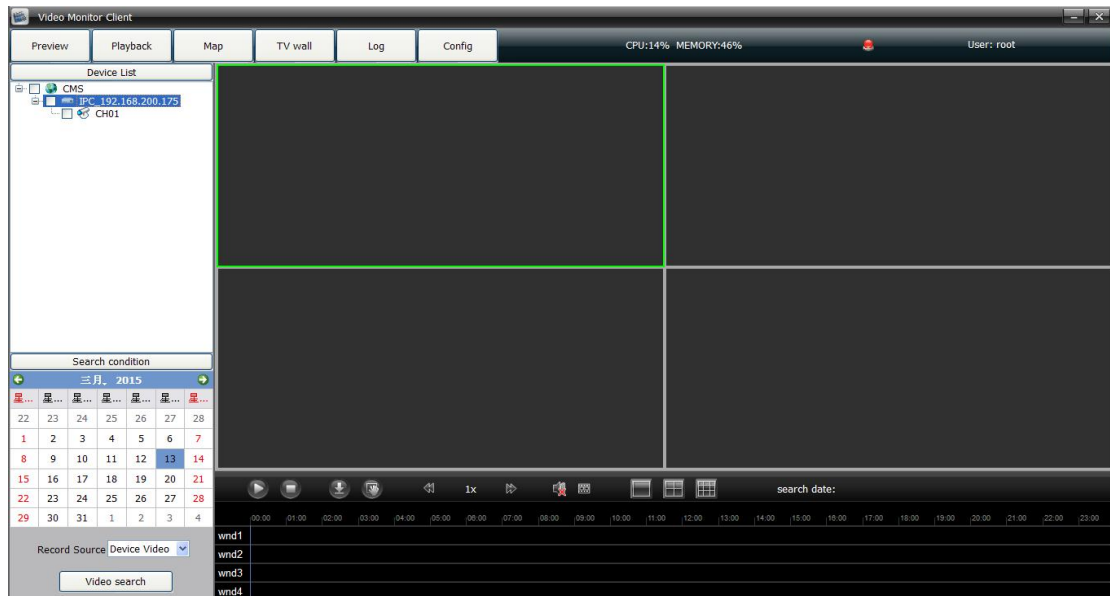
Set the selected channel preview window brightness, contrast, saturation and tone, click **default value** to make the parameters restore default. It only support brightness and contrast setting for current I8 protocol.

2.1.7 Preview window video image electronic zoom

As select the channel preview window, it support video image electrical smooth zoom in by mouse middle button wheel operation.



2.2 Video playback

Click **Playback** to go to video playback module, as figure below:





2.2.1 Local video search

Click icon in front of the device information while all channels following this device will be selected,

click  icon in front of  icon to show the scope selection drop-down list, and determine to search the needed channels video(Each device only support 9channels video playback at the same time, different devices record video can not playback at the same time). Set the date, select record scope(**Local video/ Device video**) and click **video search** to view the record video. As figure below:



2.2.2 video playback operation


Click  to play, click  to stop, double-click on the blue video progress bar can pinpoint playback. As figure below:

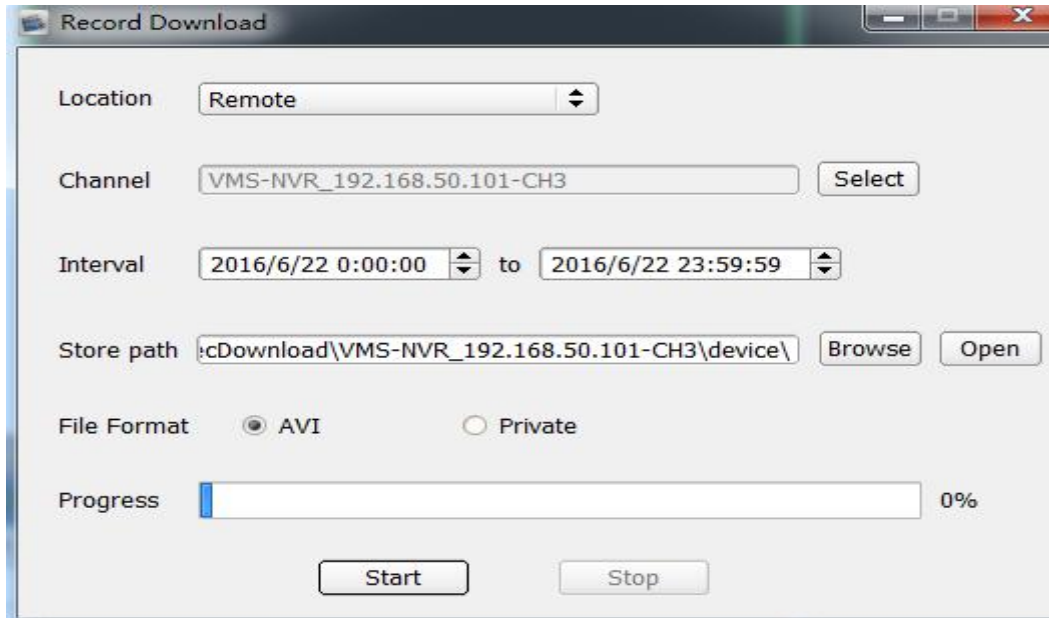


In the playback interface, double-click a playing window can get a preview interface full-screen display, or right

mouse click on the playing window to select **Full screen**, it will get a displayer full-screen display.

2.2.3 Record download


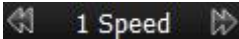


Click  icon to download the video image, there a video record download page will pop out. As figure below:



Select the video location(Remote/ Local), download channel, time interval and video store path, click start or stop to download, the file will save in the specified path.

Attention: It is best to use VLC media player to play the downloaded file.

2.2.4 Tool bars

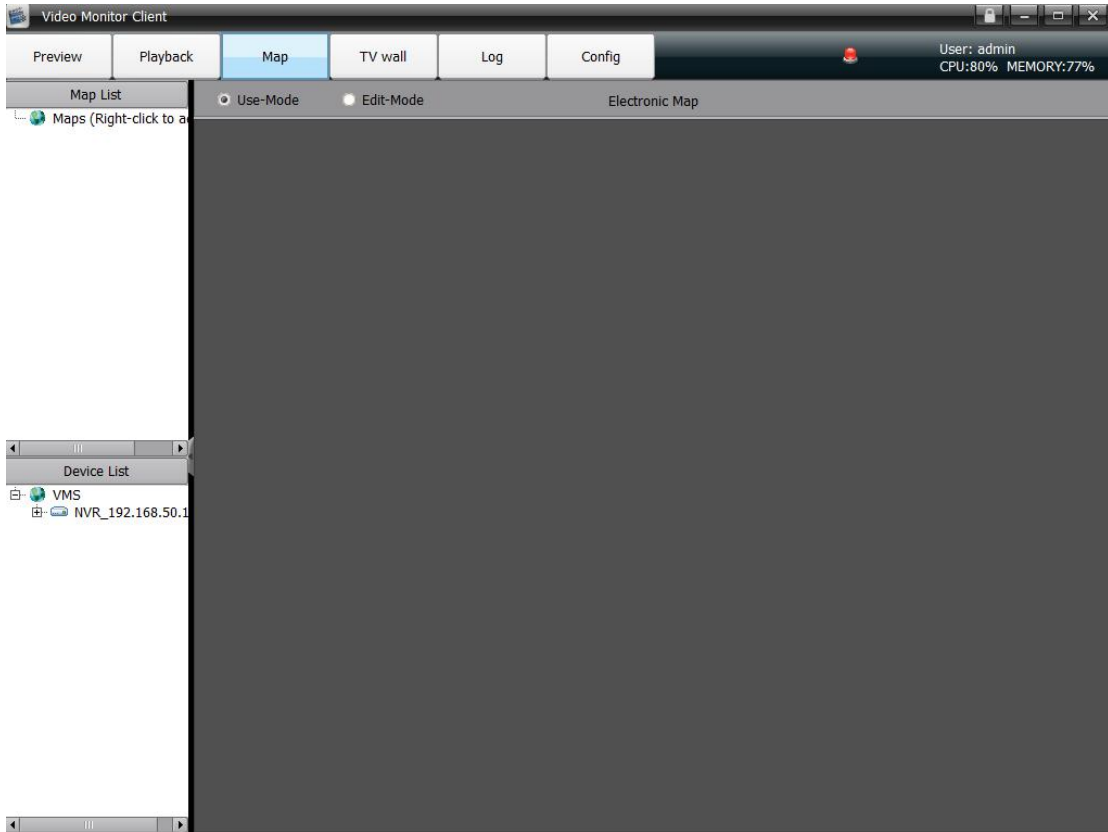
 capture,  control the speed of playback,  open or close the voice(It only support 1 channel voice playing every time),  1, 4, 9 split screen switch.

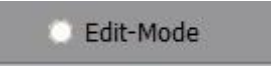
2.2.5 Playback image electronic amplification

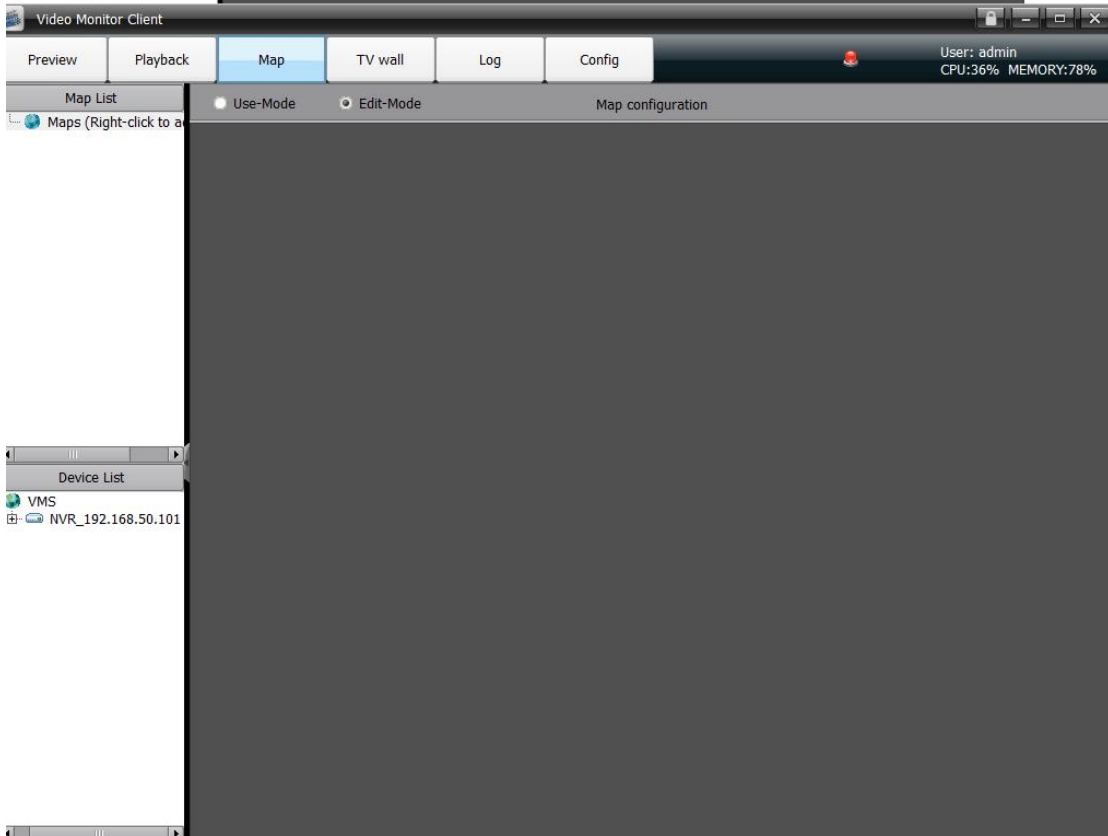
During video playback, select one window and scroll with the mouse, the video image will Zoom in.

2.3 Electronic map/ Configuration map

Click **Map** to enter into map function module,  means the electronic map are opening(*Electronic map). As figure below:

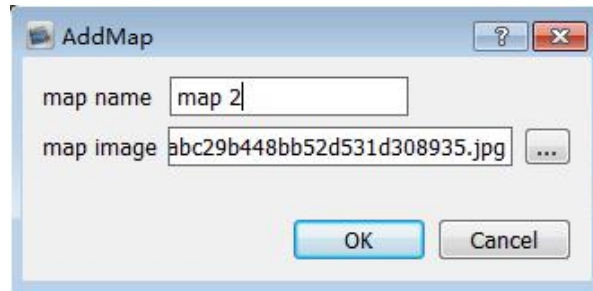


Select  means the electronic map are in configuration(*Configuration map). As figure below:

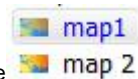
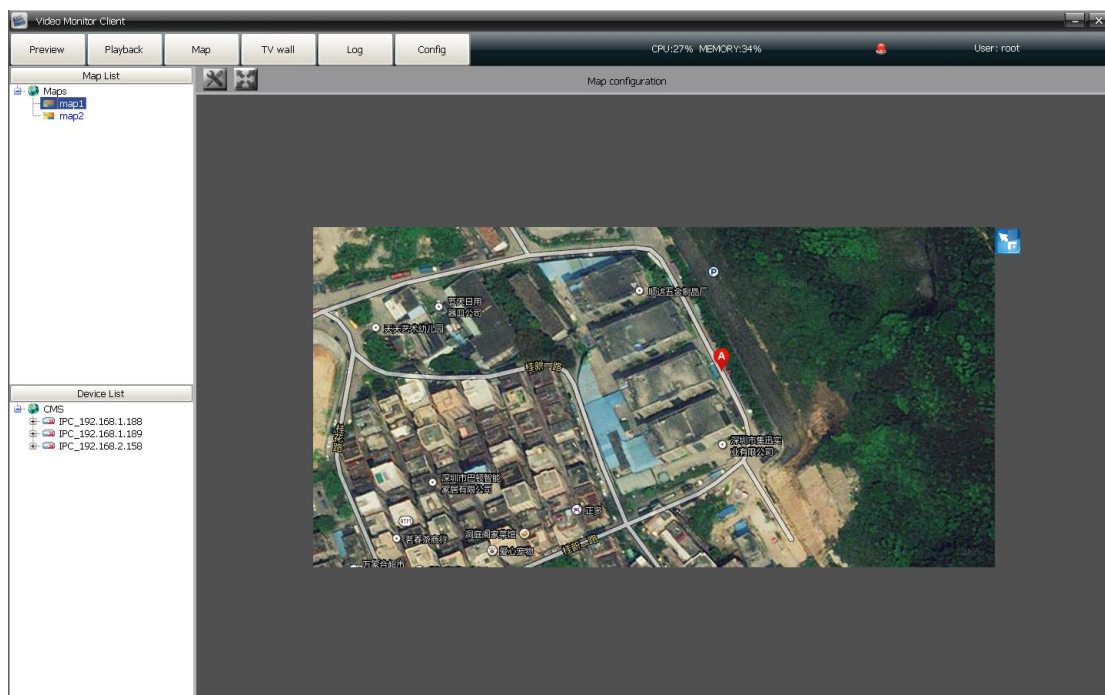


2.3.1 Add map

Configuration map  status, right mouse click on  and select **New Map**, the follow interface will pop out,




Edit the map name and add a map picture, click OK, the map added successfully:




When the electronic map display, the corresponding name will turn to blue  

2.3.1.1 Right-click on map name



- Delete map
Delete the current map
- Add child map

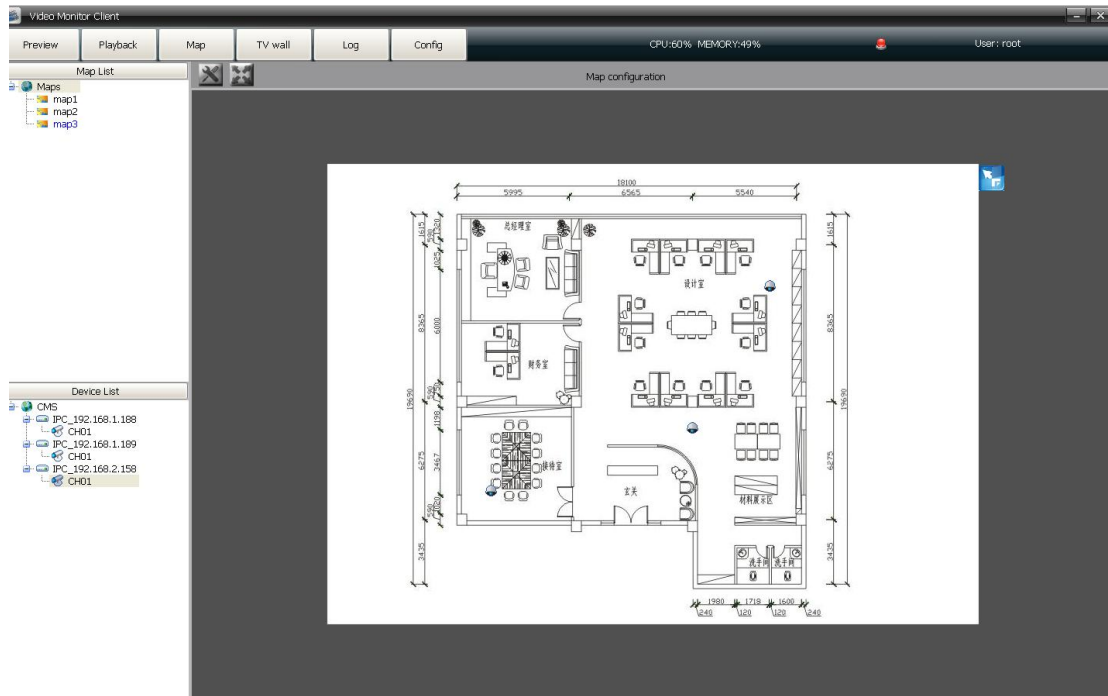
Add a sub map for the current main map,  icon will appear on the main map, there are only 2 levels for each main map, so it can not add a new map under the sub map. double click to open the sub map(It is only



available for the Electronic map  status)

Click  icon on sub-map to return to the main map.

2.3.1.2 Right-click on / icon

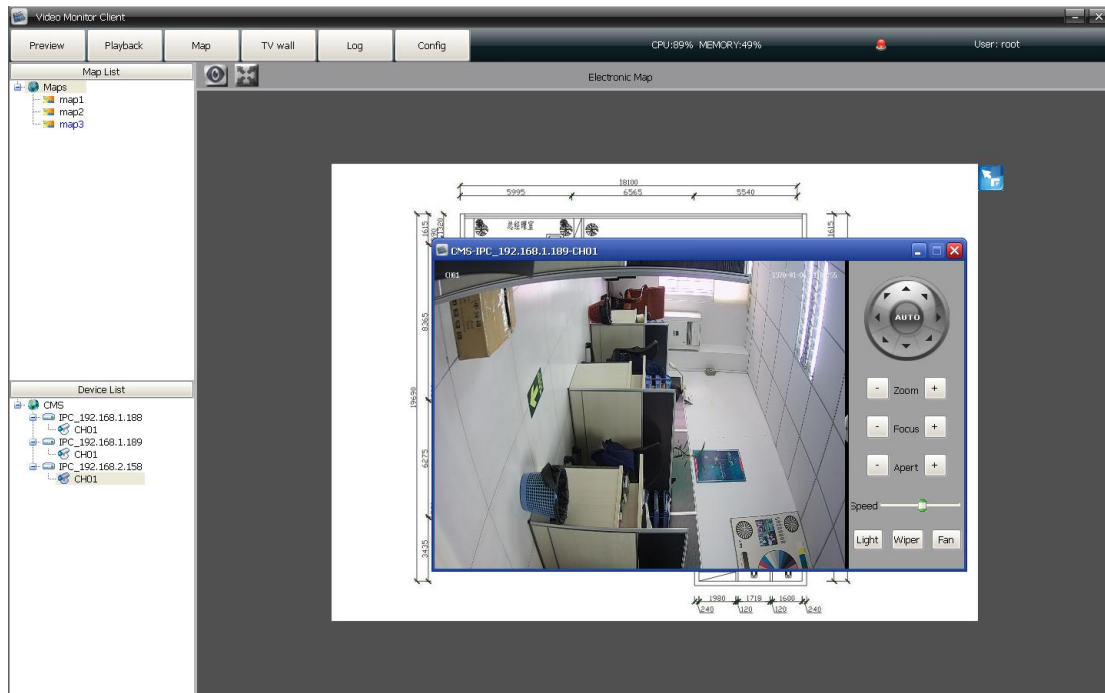
Select the channel in the device list and drag on the map to successful set up a defence, there are tow kinds of icon  / . As figure below:



Right mouse click on the icon to select delete the defence or change the icon  / .

2.3.2 Electronic map

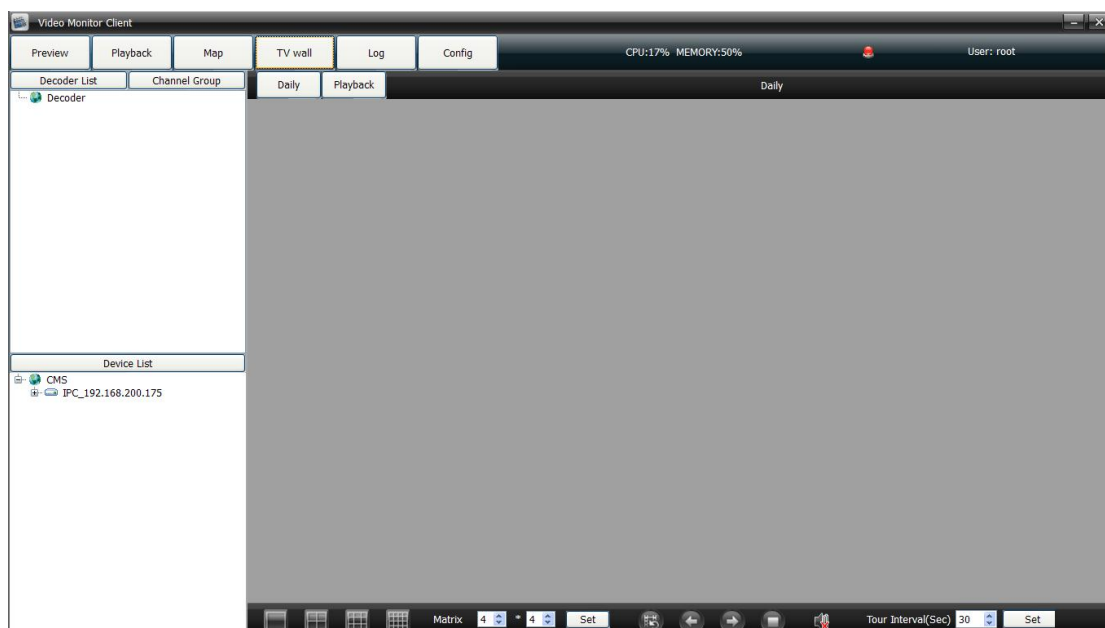
Click to the electronic map  :




2.3.2.1 Right mouse click on / icon

- Channel preview
- Channel playback (More details for operation steps please refer to **video playback** module introduction).

2.4 TV -Wall



Decoder list is used to add new decoder and show the added decoders. Right mouse click on

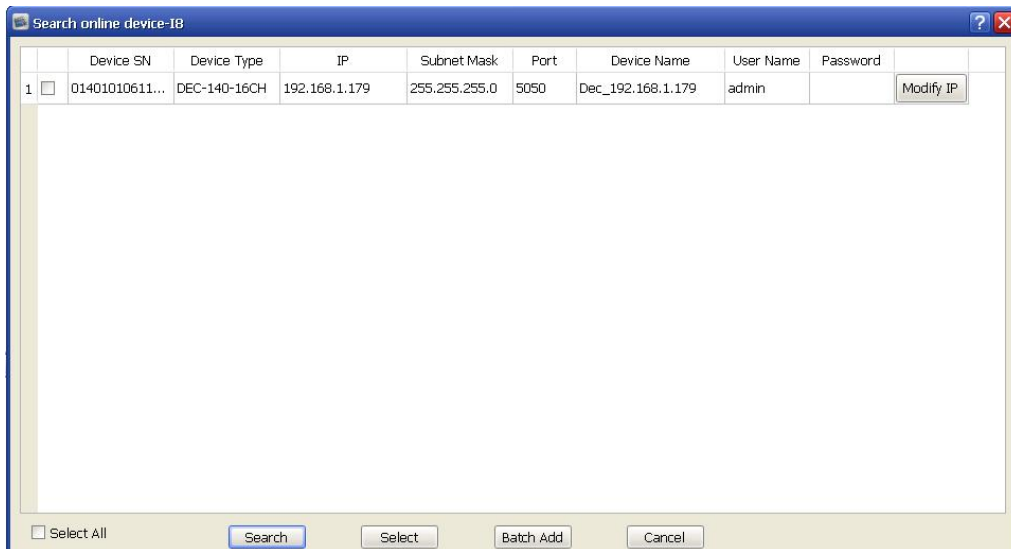
 Decoder , select **Add decoder** , the follow interface will pop out, As figure below:



The 'Add decoder' dialog box contains the following fields and buttons:

- Device IP: Search
- Port:
- Device Name:
- User:
- Password:
- Area Belong:
- Buttons: OK, Cancel

Input the device IP, port, device name of decoder and then click OK. If there are many decoders, click search and open the search interface. As figure below:



	Device SN	Device Type	IP	Subnet Mask	Port	Device Name	User Name	Password		
1	<input type="checkbox"/>	01401010611...	DEC-140-16CH	192.168.1.179	255.255.255.0	5050	Dec_192.168.1.179	admin	<input type="text"/>	Modify IP

Buttons: Select All, Search, Select, Batch Add, Cancel

Check multiple decoder devices , click **Bulk add**. Or check and add the decoder device one by one.

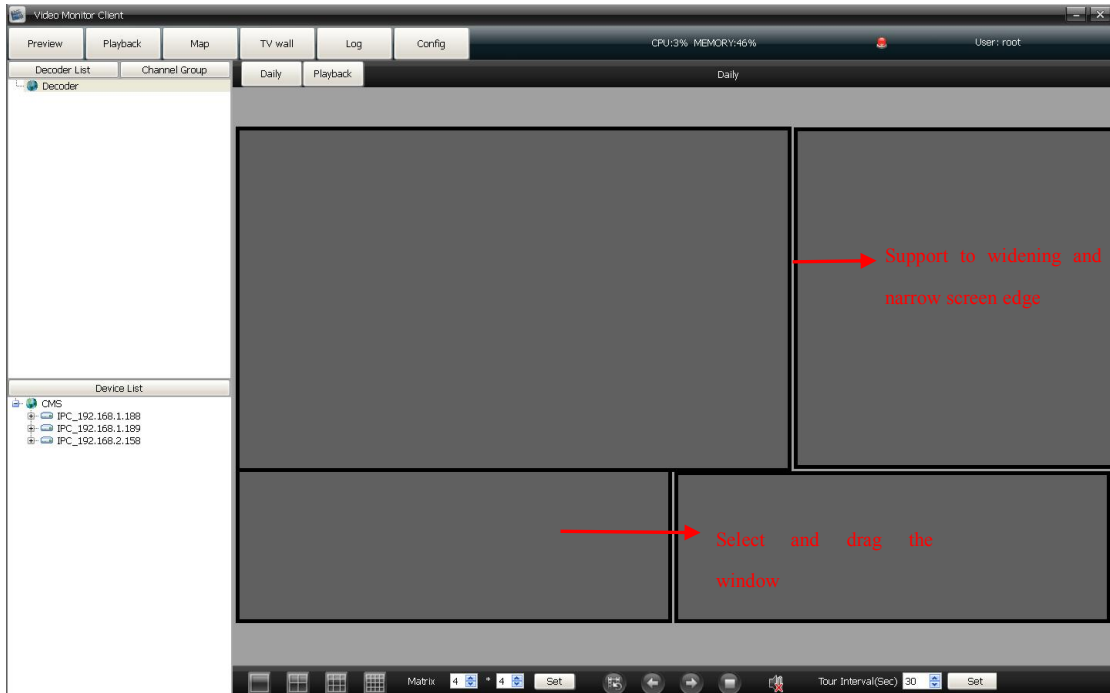
(1) Add ordinary decoder matrix:

After add the decoder, according to the TV-wall to set matrix display through the toolbar on the screen below



(Or click right mouse button-add preview window), input the numbers

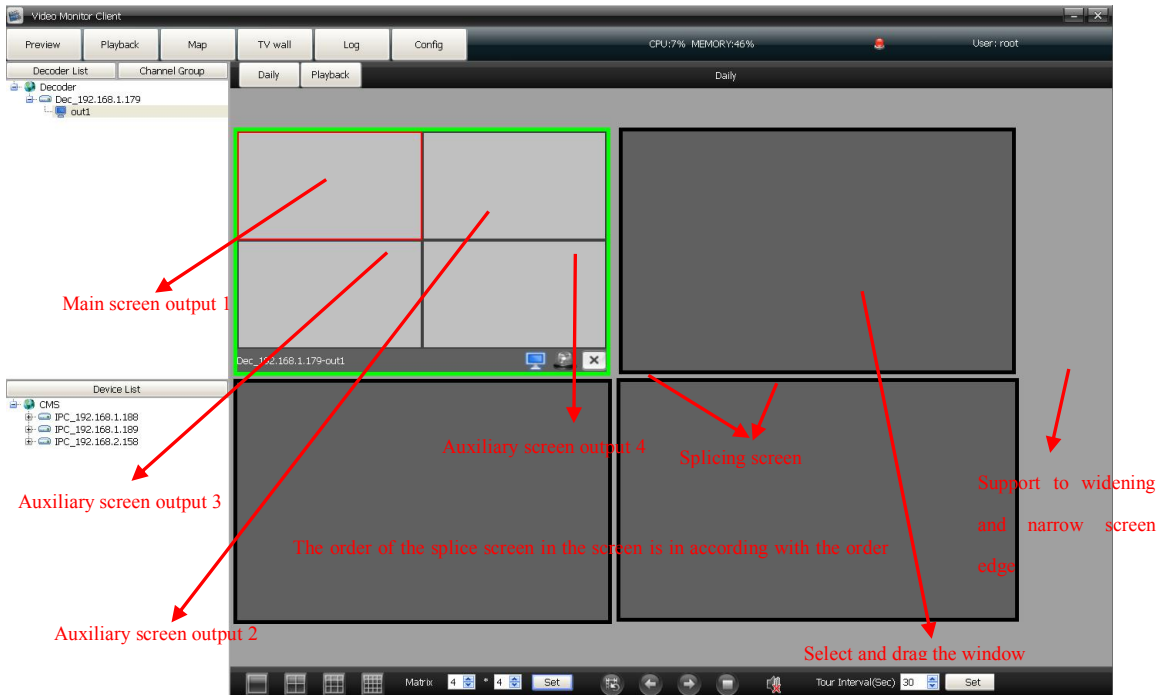
and click **SET**. As figure below:



Preview window right-click menu: Add new preview window /delete Preview window .

(2) Add joint decoder matrix:

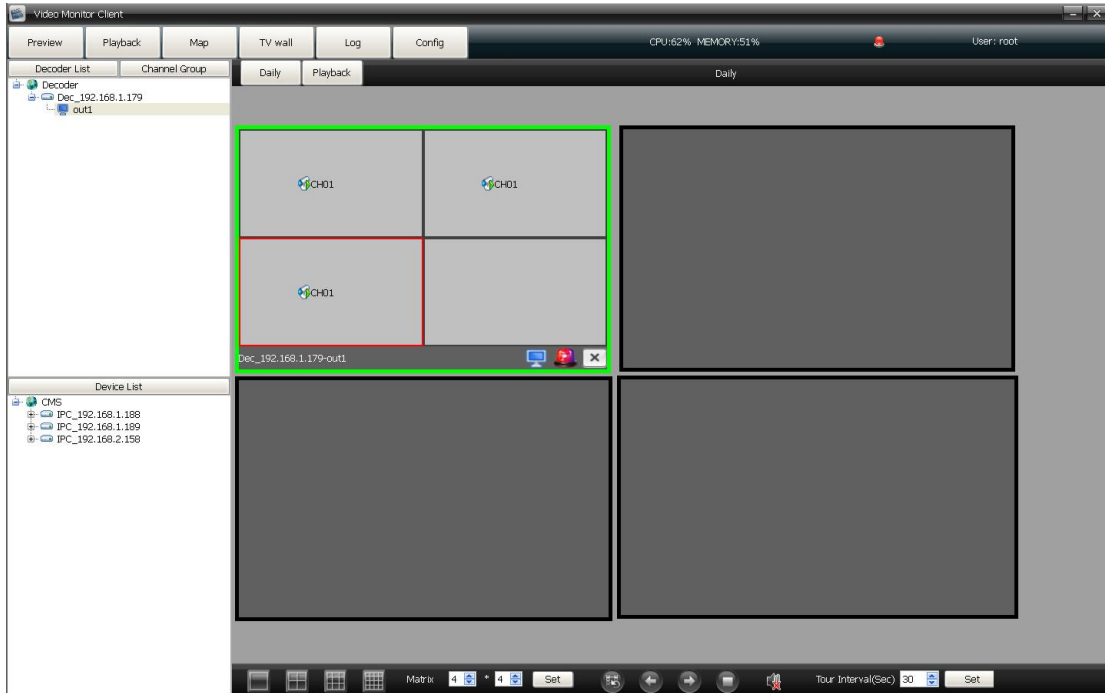
Preview window right-click to add new preview window and according to the TV wall to set it directly, as figure below:



Preview window right-click menu: Add new preview window /delete Preview window .

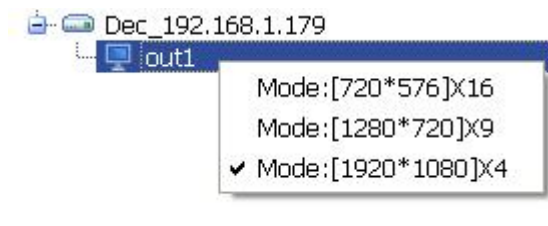
2.4.1 TV-wall daily

TV-wall daily include decoder preview and decoder rotation. Drag the decoder to the matrix, there will appear relevant information about decoder on the screen. As figure below:



(1) Video image resolution

Click the right mouse button on preview window to select the video image resolution, as figure below:



Mode: (720*576) *16 means the highest resolution is 720*576, and support max 16 channels preview at same time










Mode: (1280*960) 9means the highest resolution is 1280*960, and support max 9 channels preview at same time

Mode: (1920*1080) 4 means the highest resolution is 1920*1080, and support max 4 channels preview at same time

Note:

- Different decoder have different resolution mode, high resolution is compatible with low resolution video image, but low resolution can not analysis the high resolution video image.
- Users can select the video resolution only for No.3521 and No.3520D decoder board. As the No. 3535 decoder board does not support resolution right mouse click to select, users can split screen to change the video image resolution, 4screen: 1920*1080, 9 screen: 1280*720.

(2) The following icon functions of output screen

-  icon shows the condition of decoder:
 -  means the decoder is used to preview only
 -  means the decoder is used to rotation only
 -  shows the decoder status of set/remove defence
 -  means the decoder removed the defence and can not support video display on the TV wall
 -  means the decoder set the defence and can support video display on the TV wall
 -  means it is used to delete the channel of decoder : select the split screen, and click 
 -  icon is used to amend the split screen of decoder

Right-click menu of conventional decoding output wall: delete the decoder output relationship, screen magnifying(client port)

Right-click menu of stitching decoding output wall: delete the decoder output relationship, images stitching 1/4 magnifying, images stitching/normal. In the condition of opening splices,the decoder can be offset settings, when there is gap between the splicing display,it can fine-tune the picture by this function.


(3) Output screen right-click menu:

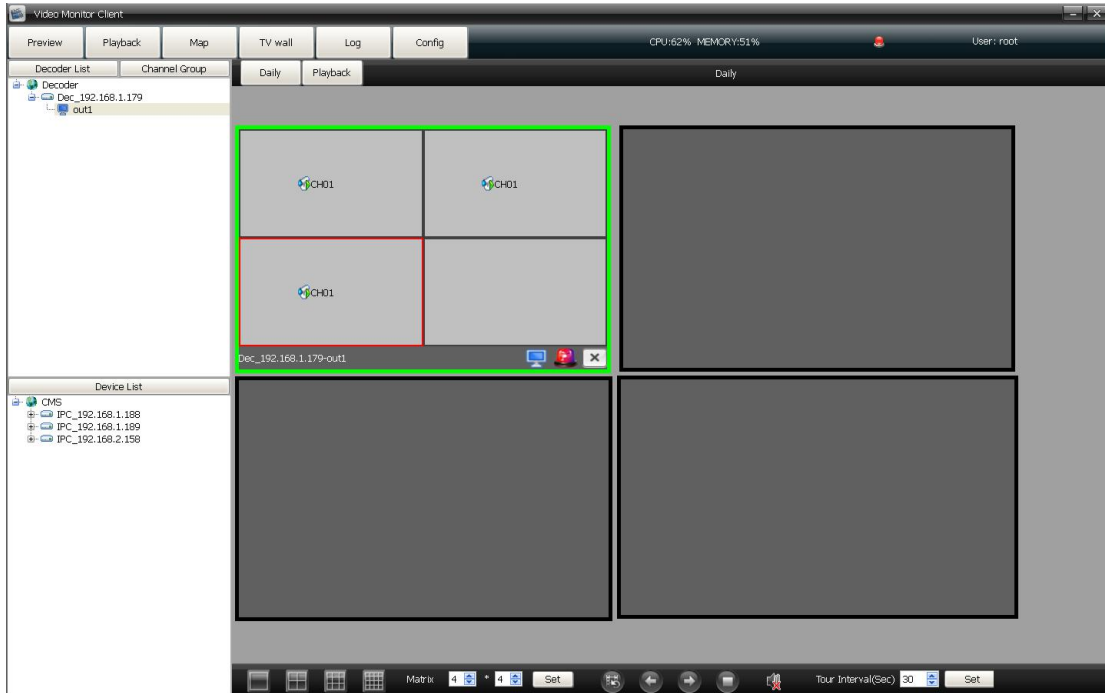
Delete the decoding output relationship: delete decoder connection on the matrix, if you want to delete the decoder connection, must first disconnect all preview or playback on the decoder.

Screen magnification (client port): decoding output relationship is magnified on the client port operation interface.

Client port preview: in the client interface, you can open the sub stream of dragged into the channel, then identify the monitor picture.


2.4.1.1 Decoder preview

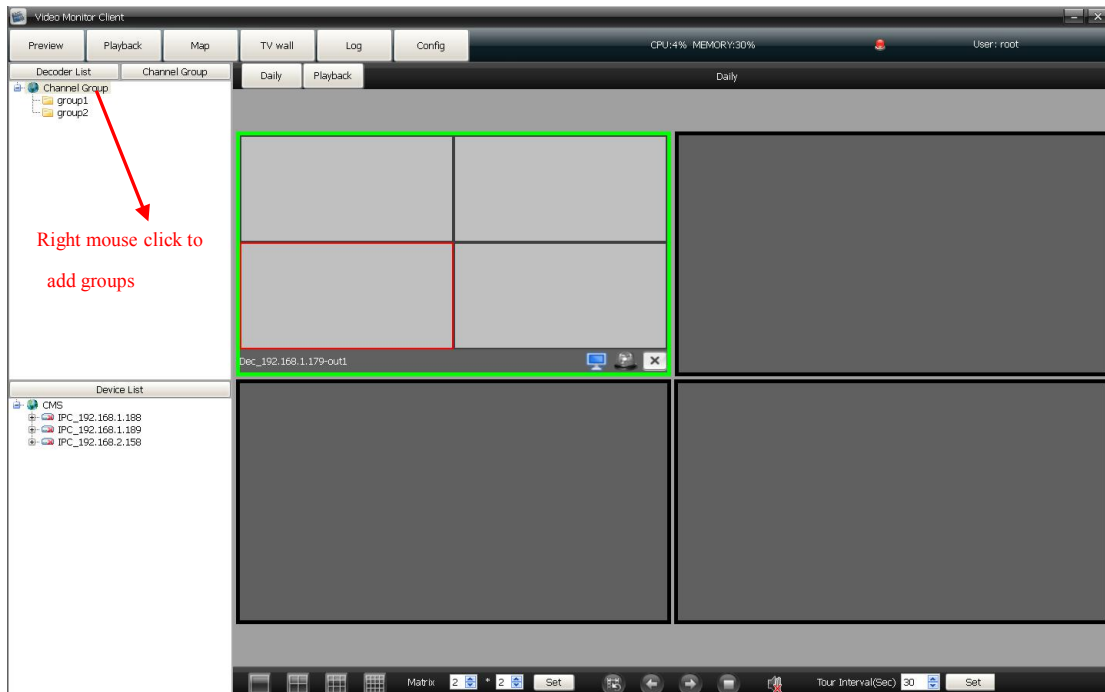
Transfer the wall into preview status , drag the device channel into decoder split screen directly. As figure below:




2.4.1.2 Decoder rotation

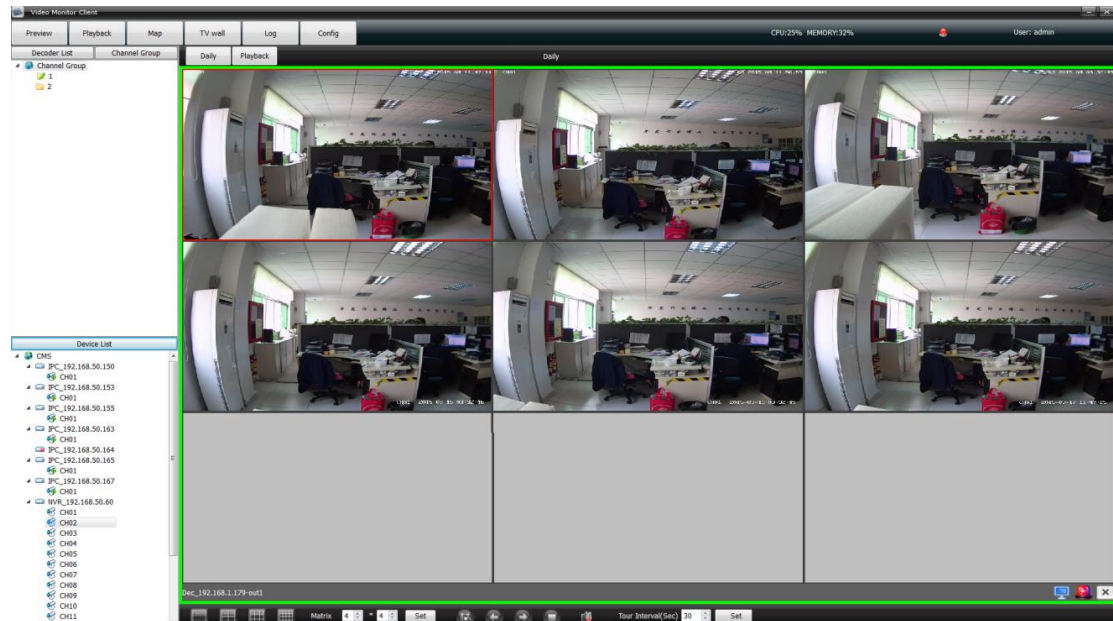


Transfer the wall into rotation status , it indicate the wall is in rotation condition. User add channels into group. As figure below:




- Right mouse click to select the video channel
- Delete group: Select the group and right mouse click to select deletion
- Modify name: Select the group and right mouse click to select name modification
- Delete node: Delete the group channels

After added group successfully, double-click a group icon into configuration state  group 1. Then drag the channel to the group, the dragged channels will be recorded in the decoder. As figure below:



- Rotation operation buttons

While all group are setting done, click  to open rotation.



switch to last group to monitoring



switch to next group to monitoring



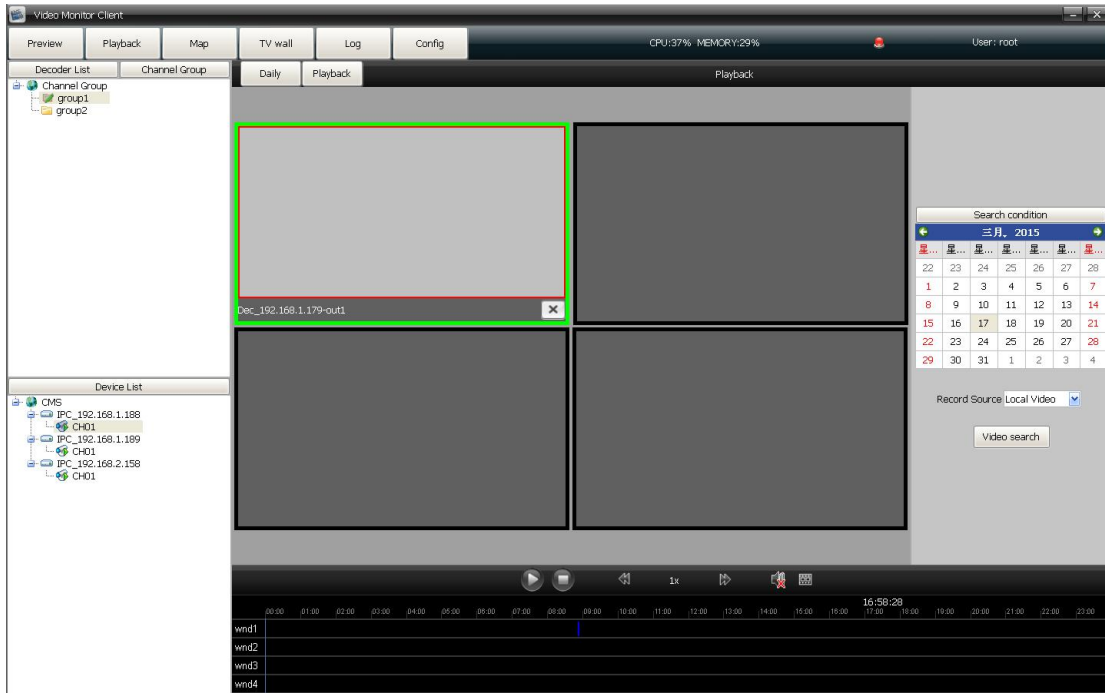
close the rotation



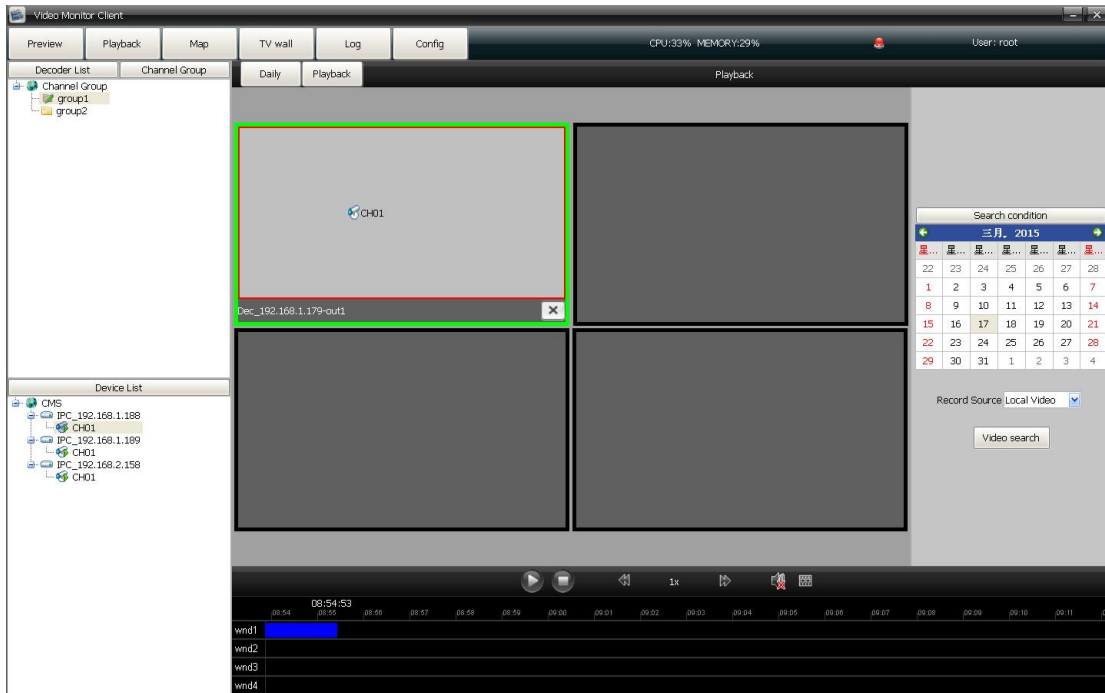
it is used to set the time of rotation.

2.4.2 TV-wall playback

Click playback to check the record video. As figure below:



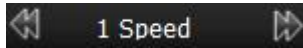
One decoder only support one channel record video playback at every time, each device only support 9channels video playback at the same time, different devices record video can not playback at the same time. Drag channels to the decoder then select the time and position of video, finally click the button of video search. As figure below:



click to play record video, or precisely click the record video blue bar directly



close the playback

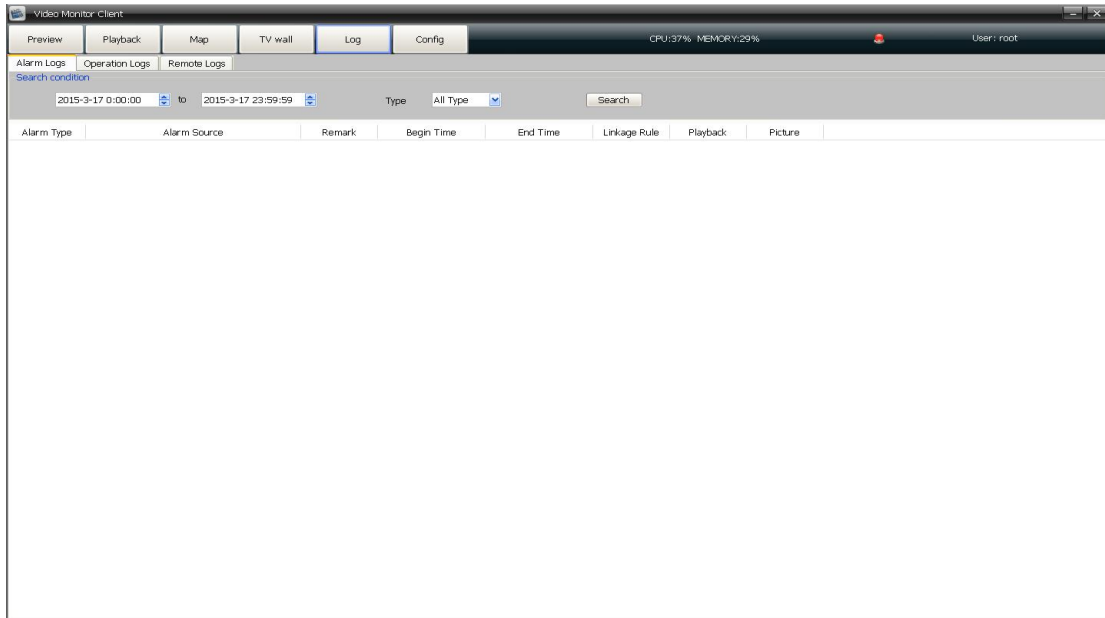


control the playback speed.

Ordinary decoder matrix right mouse click: Screen magnification(Client)

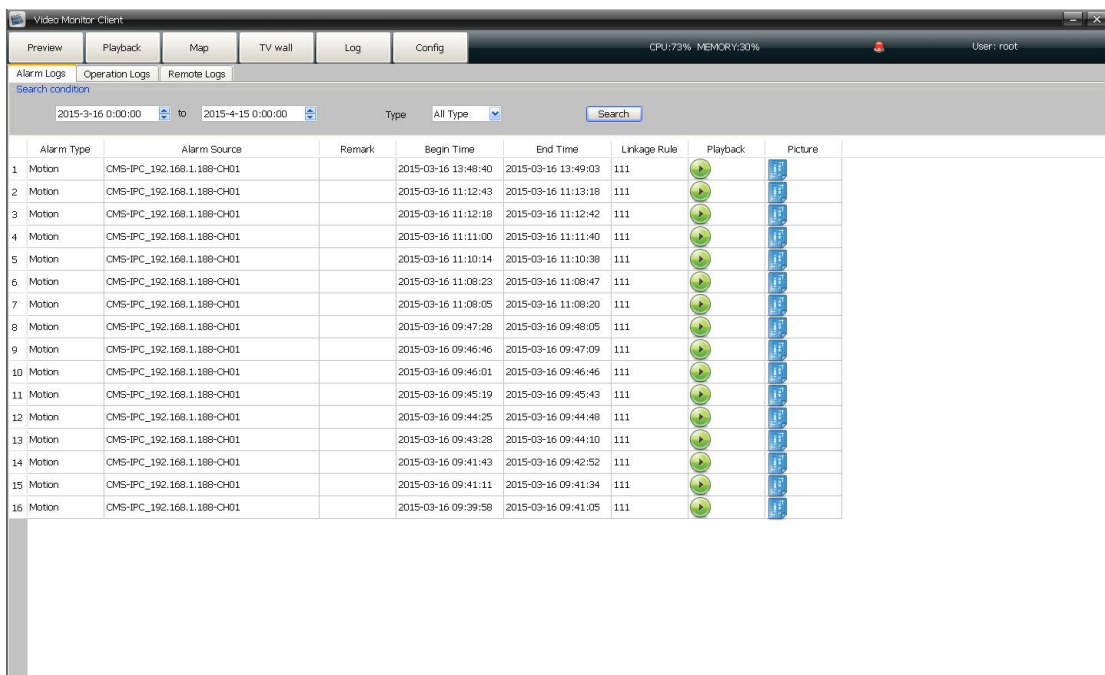
Joint decoder matrix right mouse click: Video image 1 divide 4, normal images stitching.

2.5 Log



2.5.1 Alarm logs

Alarm logs: It can be search out as the front device marked alarm signal upload center, it can be search out if check the alarm of upload center in device side which respond to the alarm linkage rule in client-side. It will show the relevant information of rules in linkage action and playback. As the figure below:






The type of alarm can be divided into alarm input, motion detection, video shelter, video lost.

Alarm source come from the device channels.

Begin time and end time is the time of alarm triggered and the time of alarm stop.

Linkage action shows the relevant linkage rule information, such as there will show **pop image** chars if set video action linkage.

In the playback,  icon indicate that there a record video, click the  icon to play.

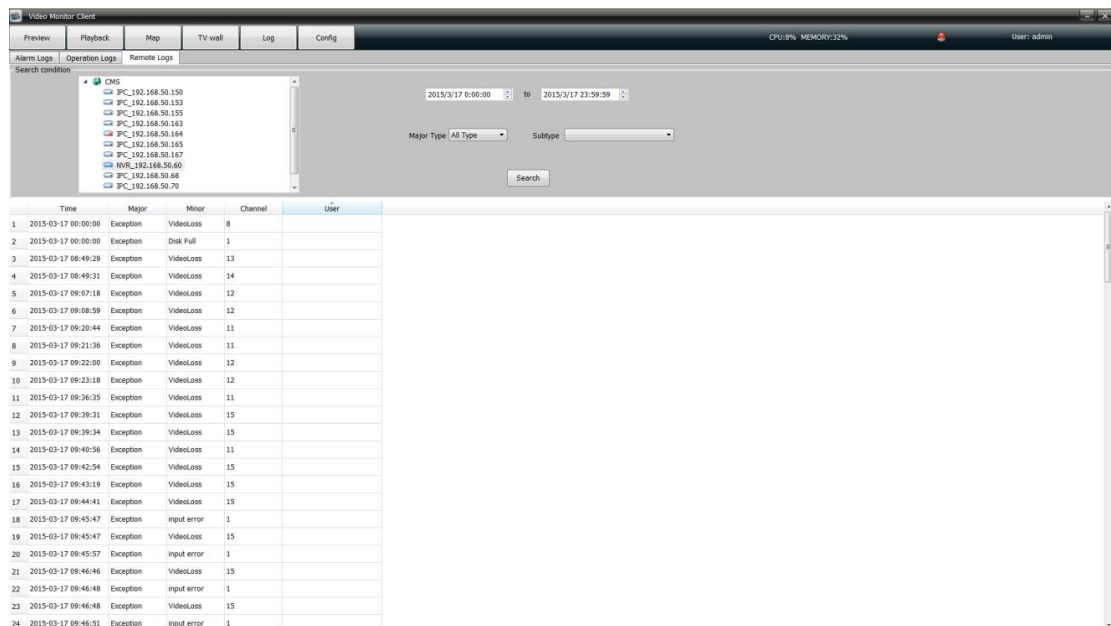
 mean the alarm capture, double click to check.

2.5.2 Operation logs

Operation logs : All users operations will be recorded, and the operation type include: All type, log in/out, add/delete devices, setup/ cancel alarm, open/ close record, remote configuration, set alarm linkage.

2.5.3 Remote logs

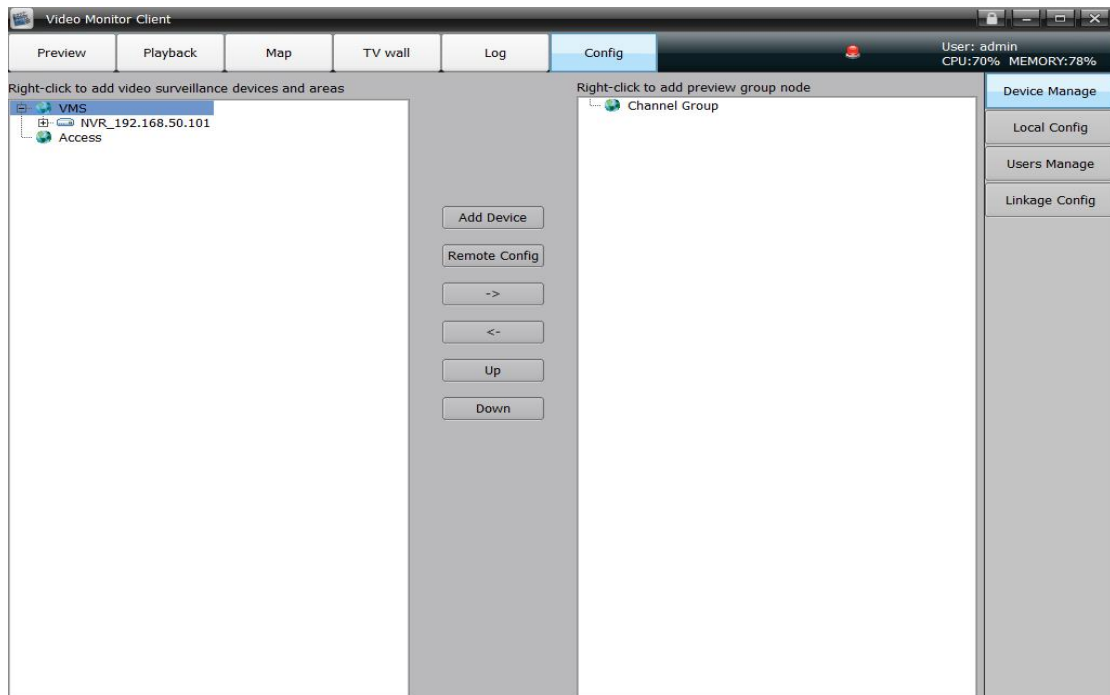
Remote log is to search the alarm information saved in the front-end device. Select the front-end device, set date and type then click **Search**, all alarm information of the preset time period will appear in the blank area. As figure below:



2.6 configuration

2.6.1 Device manage

Click and enter into the configuration page. As figure below:



2.6.1.1 Right mouse click on icon

- Add area

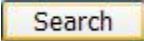
Right mouse click to add a new sub-area, input the area name and save it.


- Add device

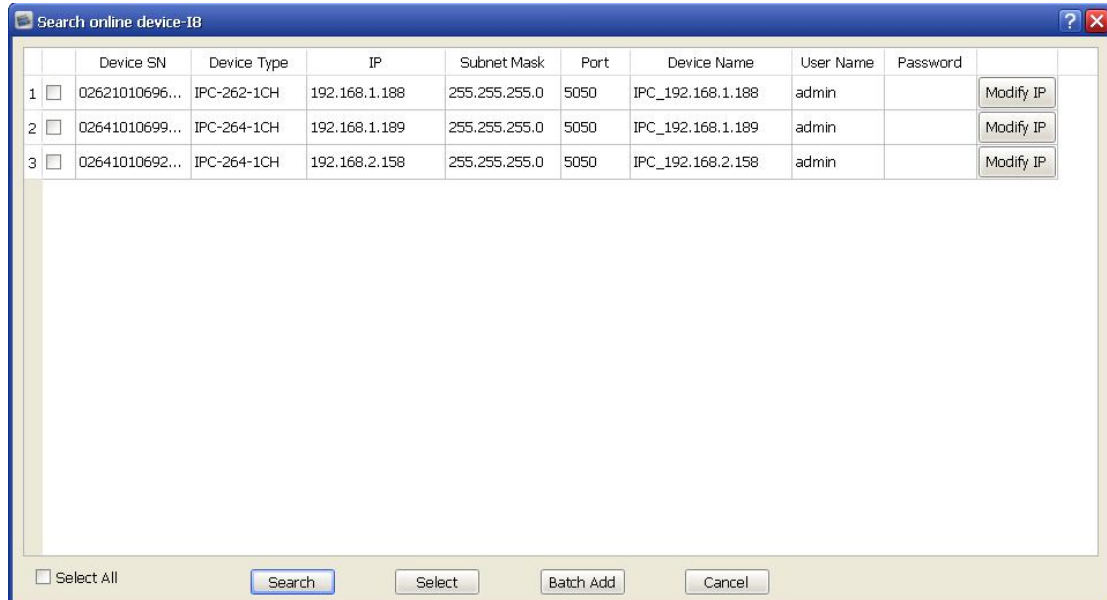
Right mouse click to select **Add device**, and the follow interface will pop up:


Add Device

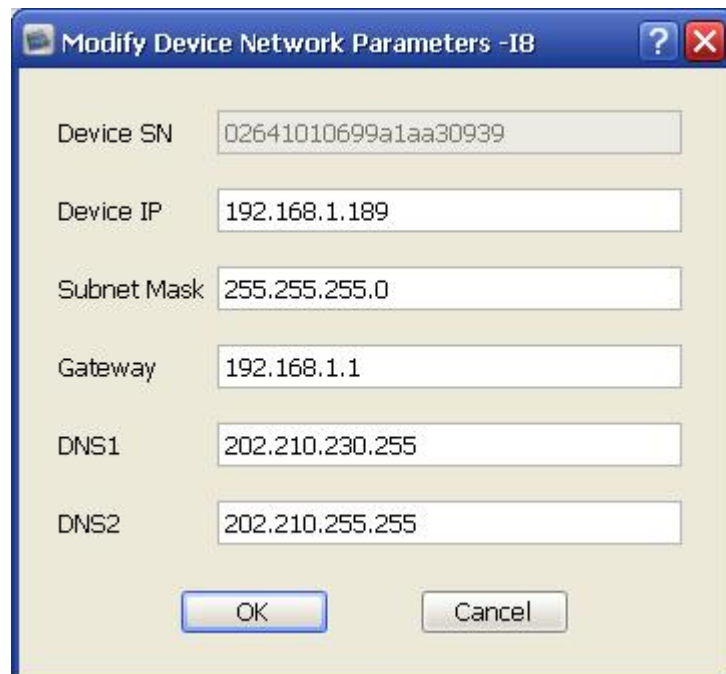
Device Protocol	<div style="border: 1px solid gray; padding: 2px;"> <p>I8 Protocol</p> <p>Onvif Protocol</p> <p>HK Protocol</p> <p>Dahua Protocol</p> <p>I8H Protocol</p> <p>I8E Protocol</p> </div>	<input type="button" value="Search"/>
Device IP	<input type="text"/>	
Port	<input type="text"/>	
Device Name	<input type="text"/>	
User	<input type="text"/>	
Password	<input type="text"/>	
Area Belong	<input type="text" value="VMS"/>	


It support 6 kinds protocol products: I8, ONVIF, HK, Dahua,I8H,I8E.Click  can add I8, ONVIF, Dahua protocol products.

Input the device information manually and click OK to add successfully, or click  to search online devices, the follow interface will pop up:



Modify IP address: Click  to modify the device IP parameters (It can not get the subnet mask and gateway for Onvif protocol devices). As figure below:



Search: Click  again to update the device information


Select: Select one device and click to select, add the device into VMS. As figure below:

The screenshot shows a dialog box titled "Add Device". It has the following fields and buttons:

- Device IP: 192.168.0.65 (with a Search button to its right)
- Port: 5050
- Device Name: NVR_192.168.0.65
- User: admin
- Password: (empty)
- Area Belong: CMS
- Buttons: OK and Cancel

Batch add: check one or more device simultaneously, click the **Batch add** to add series devices one-time .

Cancel : Close the device online search window

Note: Users may have to input the ONVIF product password when click  button to select device.

- Modify the device
 - Modify the added devices IP, port, user name and password.
- Modify the name
 - Modify the area/device name

◆ Refresh channel name

Right mouse click to select to refresh the channel name

● Set alarm

Click to open alarm linkage

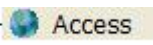
Right mouse click on the device information to select delete node(As any present device channels video in the preview/ playback/ recoding, it can not delete)

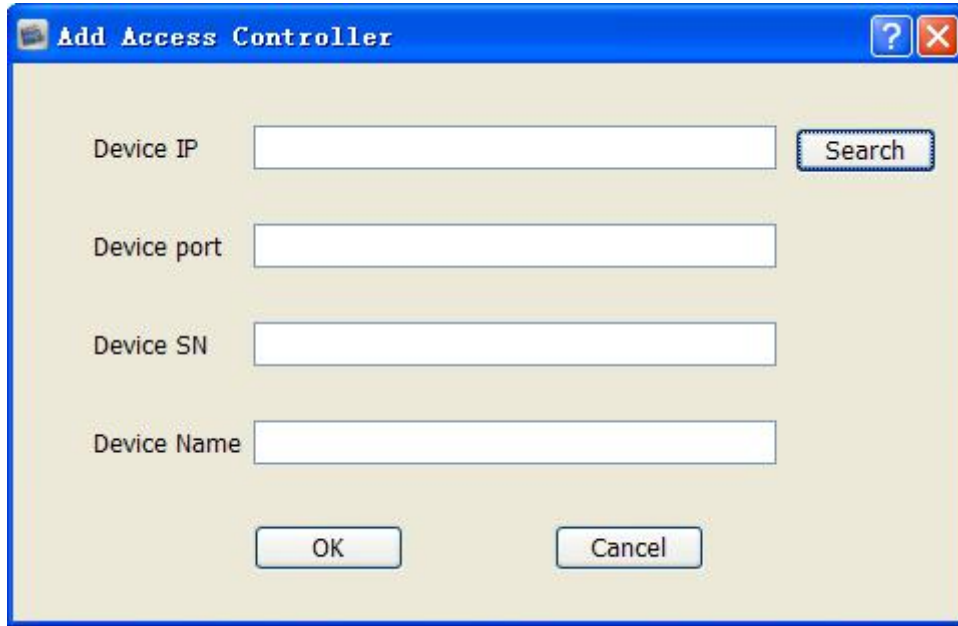
● Modify device


Right mouse click to to select **modify device**, and users and edit the device local name

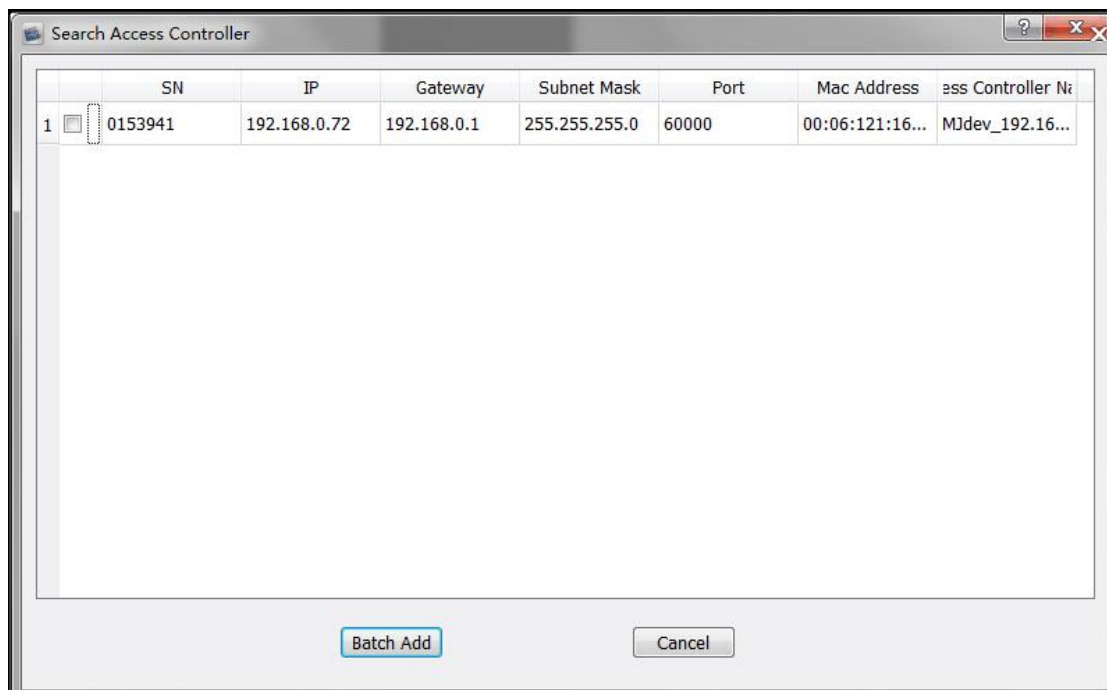
2.6.1.2 Access controller

● Add access controller

Right mouse click on  icon to select **Add access controller**, and the below interface will pop out:



Users can input the access controller device IP and other information, or click , as figure below:





Batch add: Select devices and click batch add.

Cancel: Close the online devices window.

- Access controller status

After the access controller add successfully, as figure below:



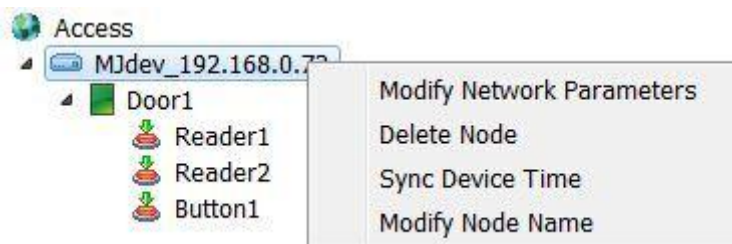
Door1: Attendance & access system controlled the door1,  means door open,  mean door closed;

Reader 1/2: Card reader 1, Card reader 2;

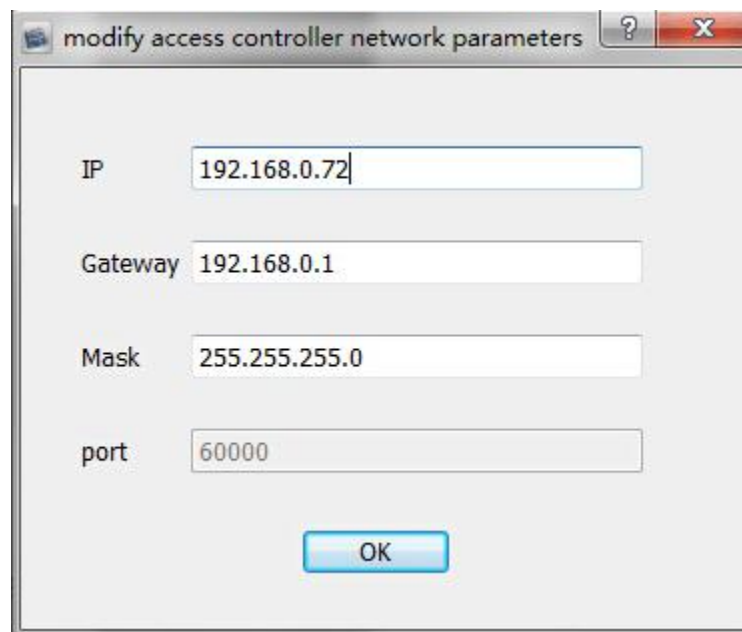
Button 1: Button 1 for the door open/close.

- Attendance & access system setting

Right mouse click on the access device name, as figure below:



Modify network parameters: Modify the IP address, as figure below:



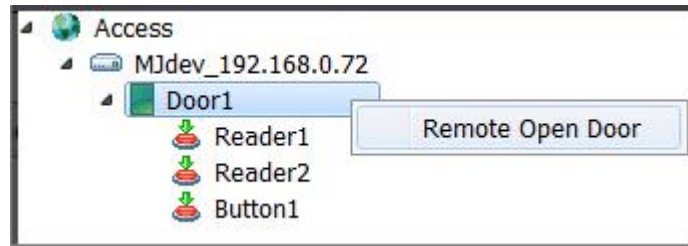
Delete node: Delete the attendance & access system

Sync device time: Set the attendance & access system time same with PC client

Modify node name: Select to modify the access device name

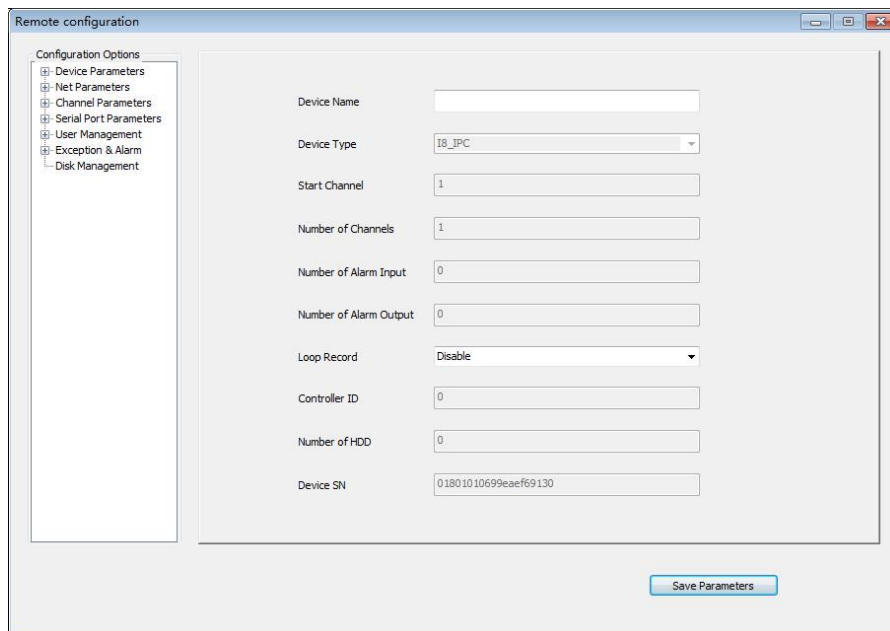
- Door remote operation

Right mouse click on the **door 1** and select **Remote Open door**, and open the door. As figure below:




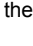
2.6.1.3 Remote configuration

Select the device and click **remote config**:




Remote configuration can be used to modified device parameter, more specific operations please refer to device specification manual.

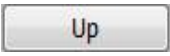

2.6.1.4 Right click to add group node

- Right click on  **Channel Group** icon to add group
- Right click on group name to select **Delete group** to delete it
- Select the device channel in the left area, and select specified group in the right area, click  then click

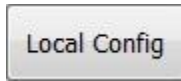


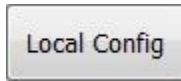
to add the channel in the specified group.

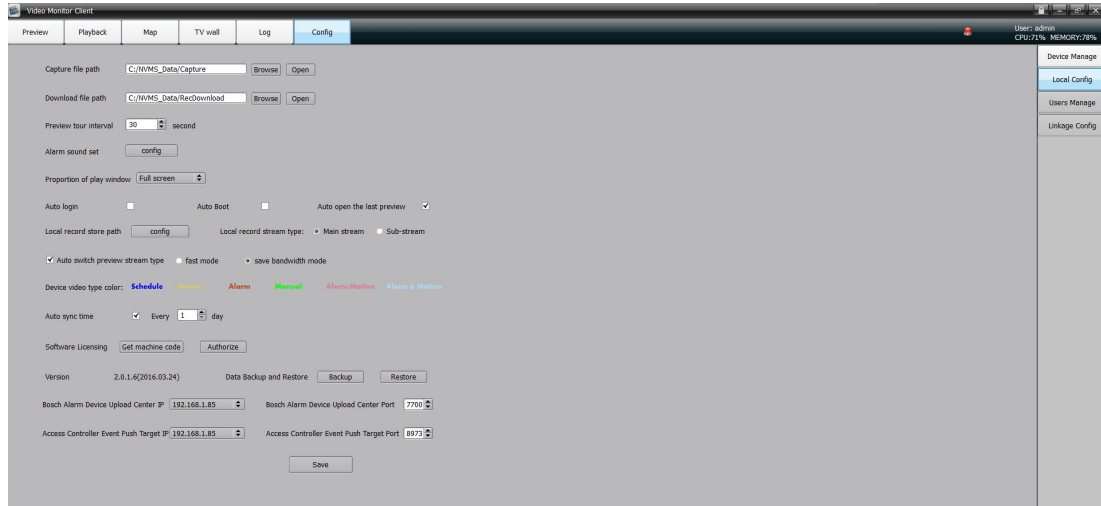
- Select the device information in the right area and click  to remove it

- Select the group and click ,  to sorting it.

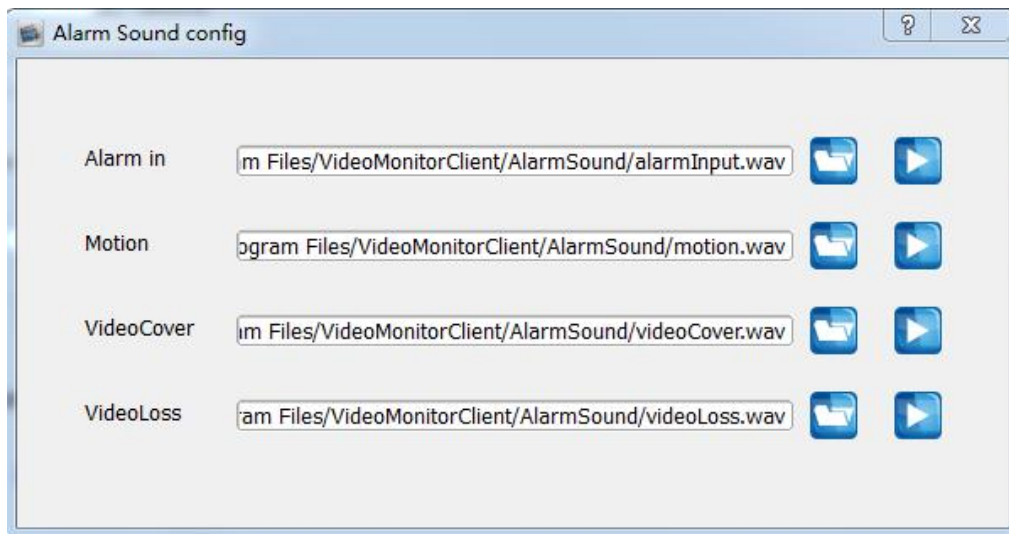
2.6.2 local config




Click  enter into the local configuration page. As figure below:



- Capture file path/ Download file path: Set the file store path. Click **Open** to find the file location.
- Preview tour interval: Set the group preview time 30 seconds in general.
- Alarm sound set:

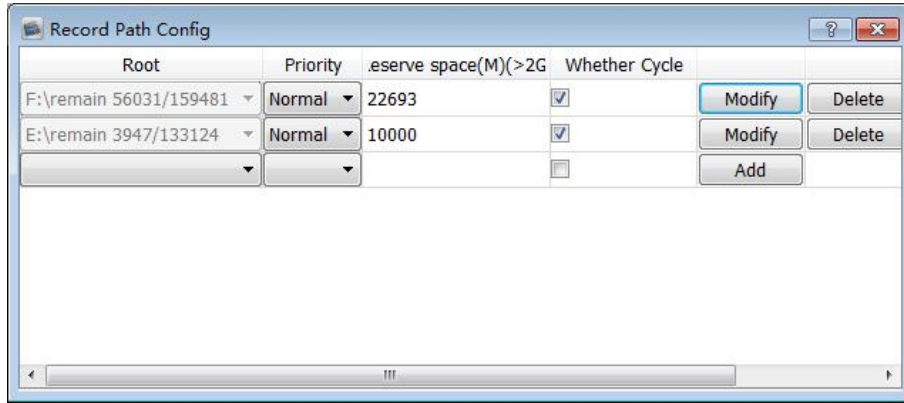


Users can set the custom alarm sound , click  to select the audio file, change the old audio file into the

new audio file, click  to preview audio file .

Attention: Only support WAV format audio.

- Proportion of play window: Set the video display scale, users can select 16:9, 4:3 and full screen.
- **Auto login**: user can log in directly next time after select **Auto login**.
- **Auto Boot**:Auto boot from the start
- Auto open the last preview: Users can get continuous video preview as who turn off the software directly before, and the record video stored also.
- Local record store path



Select the saved path of local video, set reserve space and whether cycling the video. It will work after modified the param and click the button of modify.



- Click auto switch stream

Sub stream for above 4 split screen, main stream for 1/4 split screen.

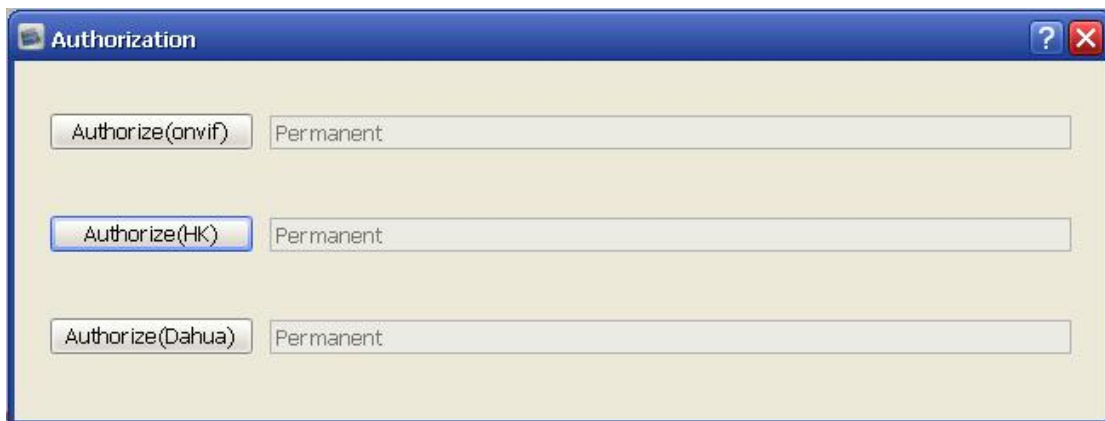
Fast mode: Opened the main stream and sub stream simultaneously in fact, it only change the display chars at every stream switch

Save switch stream: It have to turn off the current stream then turn to another stream, the speed is a little slow then Fast mode

- Non click auto switch stream: Right click on the preview window to select the stream type
- Color for front-end video record type

Different color means different video record type for front-end device.

- Auto sync time: Click devices and open time correction function.
- Software authorize: Get the devices access authorization, input the devices machine code, see the picture below:

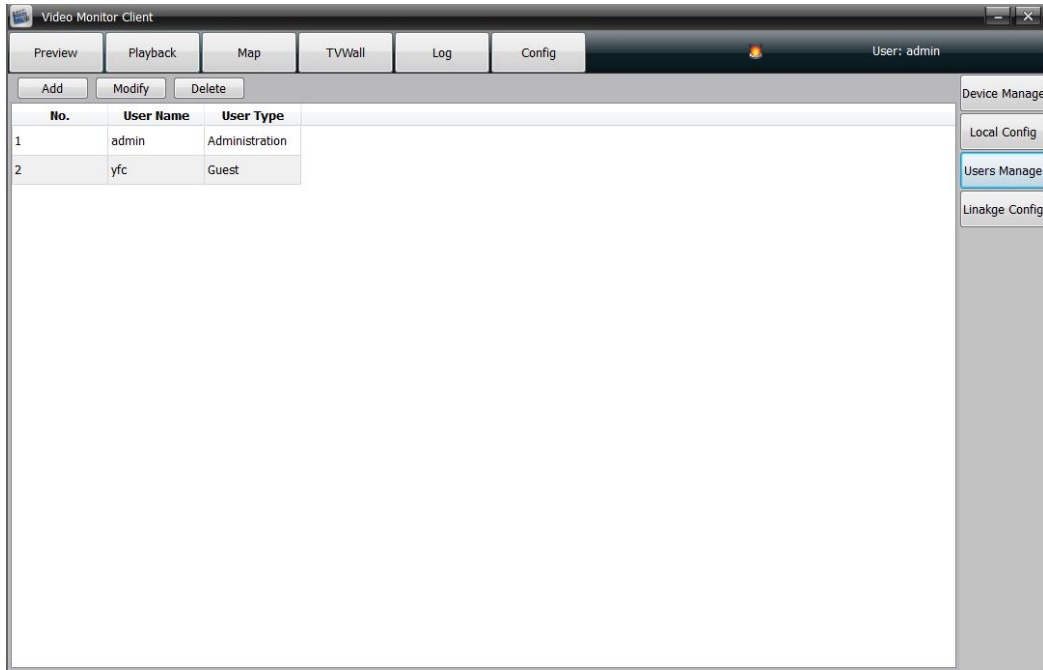


Click the corresponding authorization button, after authorize successfully, reset the software.

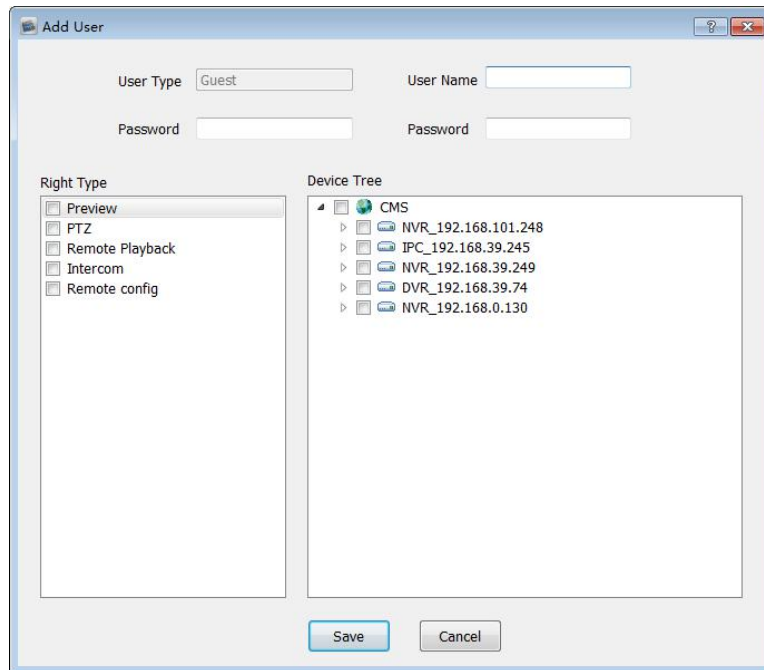
- Version: The current software version.

2.6.3 users manage

Click users manage in configuration module then enter into the users manager page.



Add user: click **Add** to open the add user page:



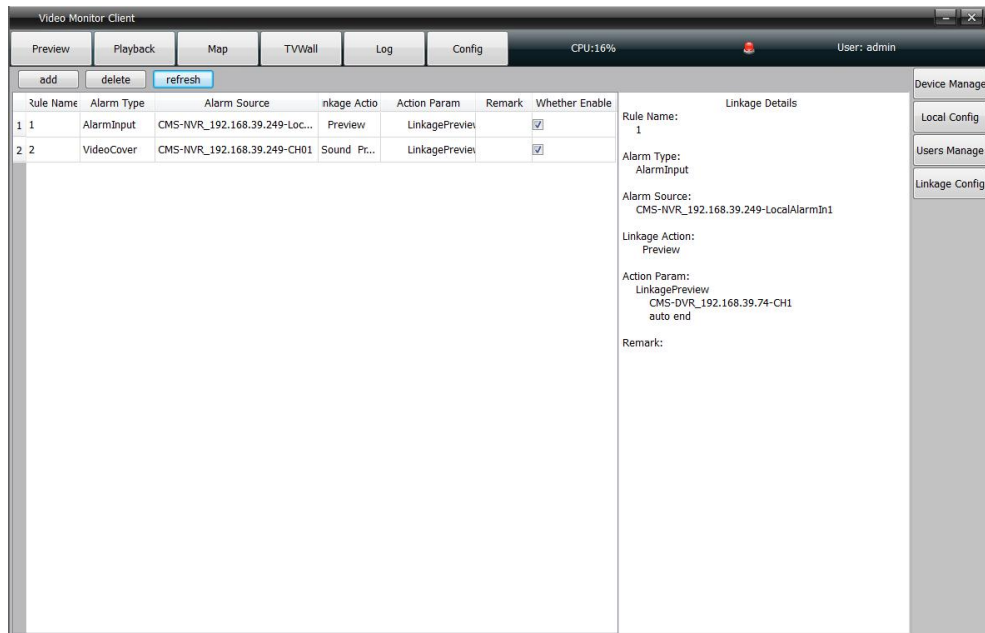
Define user name and password, user authority can be subdivided to single device channel when checking . To note here is: If device has no preview authority, it will not offer other permissions, if the channel has preview authority, it support video record automatically.

User modify: Modify the name, password, permission of ordinary user, superuser (It is the first client , we call it root) allowed to modify password only.

User delete: cancel the ordinary user but super-user.

2.6.4 alarm linkage

Click **Linkage config** to enter the alarm linkage setting page. As figure below:



This is used to configurate alarm linkage information and manage the configured alarm linkage . Click new alarm linkage ,as figure below :

Rule Name:

Type: Alarm Input Motion Detection Video Cover Video Lost

Source:

Linkage Action Choose:

Action: Sound Map TV Wall Preview Record Capture PTZ

Action param:

Remarks:

Rule name: Rule name (user defined)

Type: Alarm input ,motion detection, video cover, video lost

Source: Select any device channel for alarm linkage

Linkage action: Corresponding actions for alarm signal receiving, user can select one or more linkage action including :

- sound: Buzzer alarm
- Map: Alarming on the electronic map
- TV wall: Alarming on the TV wall
- Preview: Popp up a preview window
- Record: Alarm triggered video record
- Capture: Alarm triggered capture
- PTZ: Alarm triggered PTZ control

Action param: Display the relevant action information

Remark : Indicate the alarm information(user defined)

2.7 All protocol products function parameters

Preview

	Digital zoom	Capture	PTZ	Audio	Talk-back	Local video recording	Video parameters	image enhance	Group rotation	Front- end video recording status display
I8	Support	Support	Support	Support	Support	Support	Support	Support	Support	Support
ONVIF	Support	Support	Unsupport DC, IRIS	Support	Support	Support	Support	Support	Support	Support
Hiklife	Support	Support	Unsupport DC, cruise	Support	Unsupport	Unsupport	Unsupport	Unsupport	Support	Support
Dahua	Support	Support	Unsupport DC, cruise	Support	Unsupport	Unsupport	Unsupport	Unsupport	Support	Unsupport

Playback

	Front- end video recording playback	Local video recording playback	video recording playback capture	Download front- end video recording	Download Local video recording	Change the playback speed	Playback audio preview	Frame display
I8	Support	Support	Support	Support	Support	Support	Support	Support
ONVIF	Unsupport	Support	Support	Unsupport	Support	Support	Support	Support
Hiklife	Support	Unsupport	Support	Support	Unsupport	Support	Support	Support
Dahua	Support	Unsupport	Support	Support	Unsupport	Support	Support	Support

Map and TV wall

	Map	Map local	Map	Pictures pop	Map	Video	Video	Audio	Group

	preview	video recording playback	front-end video recording playback	up on the map as alarm in	monitoring point alarm blink	display on the TV wall by decoder	display on the TV wall	display on the TV wall	video rotation
I8	Support	Support	Support	Support	Support	Support	Support	Support	Support
ONVIF	Support	Support	Unsupport	Support	Support	Support	Support	Support	Support
Hiklife	Support	Unsupport	Support	Support	Support	Unsupport	Unsupport	Unsupport	Unsupport
Dahua	Support	Unsupport	Support	Support	Support	Unsupport	Unsupport	Unsupport	Unsupport

Log and user configuration

	Alarm log	Operation log	Remote log	Remote configuration	User management	Get channel name	Modify IP	Time correction
I8	Support	Support	Support	Support	Support	Support	Support	Support
ONVIF	Support	Support	Only support abnormal log search	Unsupport	Support	Support	Support	Support
Hiklife	Unsupport	Support	Support	Unsupport	Support	Support	Unsupport	Support
Dahua	Unsupport	Support	Unsupport	Unsupport	Support	Support	Unsupport	Support

Alarm

	Alarm linkage audio	Alarm linkage map	Alarm linkage TV wall display	Alarm linkage picture pop up	Alarm linkage video recording	Alarm linkage screen capture	Alarm linkage PTZ
I8	Support	Support	Support	Support	Support	Support	Support
ONVIF	Support	Support	Support	Support	Support	Support	Support
Hiklife	Support	Support	Unsupport	Support	Unsupport	Support	Support
Dahua	Support	Support	Unsupport	Support	Unsupport	Unsupport	Unsupport

Client data backup: As users install the client software, it will create a NVMS_Data file, click to open this file, please notice **videoMonitorDb.s3db** subfile, all parameters configuration saved in this subfile. When users have to recover the data, replace **videoMonitorDb.s3db** to **C:\NVMS_Data** file is ok.