

ETHERNET ADSL MODEM



Quick Installation Guide

Table of Contents

Check and Prepare

Package Checklist.....	1
Hardware Requirements.....	1
Data Requirements.....	1

Features.....	2
ATM Protocol Support	2
Bridge Mode.....	3
Router Mode.....	3

Introduction

LEDs of Front Panel.....	4
Hardware Installation.....	4

Configuration Setting

LAN Card Setting.....	5
ADSL Modem Router Parameter Setting.....	6

ANNEX A

ADSL Modem Router Configuration Guide.....	9
--	---

Check and Prepare

Package Checklist

- One Ethernet ADSL Router
- One power adaptor
- One RJ45 crossover cable
- One RJ11 phone cable

Hardware Requirements

- ADSL Line
- Ethernet card inside your PC or Uplink port on Switch HUB

Data Requirements

You must get the following data information from your ISP or phone company to set up this Ethernet ADSL Modem Router.

For Static IP address user:

- IP address
- Gateway Address
- Subnet mask
- DNS
- VPI value
- VCI value
- Encapsulation mode(example: RFC 1483, 1577...etc.)

For Dynamic IP address user:

- VPI value
- VCI value
- Encapsulation mode(example: RFC 2516, 2364...etc.)
- User name & password

Features

- RJ-45 Ethernet interface
- ANSI T1.413 Issue 2, ITU G.DMT(G.992.1), ITU-T G.Lite(G.992.2)
- DHCP server & client: Automatically assign IP address to network users & automatically get IP address from DHCP server
- IP Sharing: sharing a single IP account within your entire network via NAT routing function
- NAT(Network Address Translation) function for NetMeeting, ICQ or CUseeMe..etc. Internet application programs
- PPPoE function: time recorder function for Internet connection
- Full ATM protocol support
- Support IP, PPP, Transparent bridging...etc. multi-protocols
- Configuration, management & firmware update via Web browser
- Two-level password protection for management
- Flash memory included for future firmware upgrade

ATM Protocol Support

- RFC 2364 – PPP over ATM VCMUX
 - RFC 2364 – PPP over ATM LLC
 - RFC 2516 – PPP over Ethernet VCMUX
 - RFC 2516 – PPP over Ethernet LLC SNAP
 - RFC 1577 - Classic IP over ATM
 - RFC 1483 – Bridged IP over ATM LLC SNAP
 - RFC 1483 – Routed IP over ATM LLC SNAP
 - RFC 1483 – Bridged IP over ATM VCMUX
 - RFC 1483 – Routed IP over ATM VCMUX
 - ATMAAL5
-

Bridge Mode

- Ethernet to ADSL self learning Transparent bridging (IEEE 802.1D)
- Supports up to 16 MAC learning addresses

Router Mode

- IP routing - RIPv2
 - Static routing
 - DHCP server and client
 - NAT
 - ICMP
-

Introduction

LEDs of Front Panel



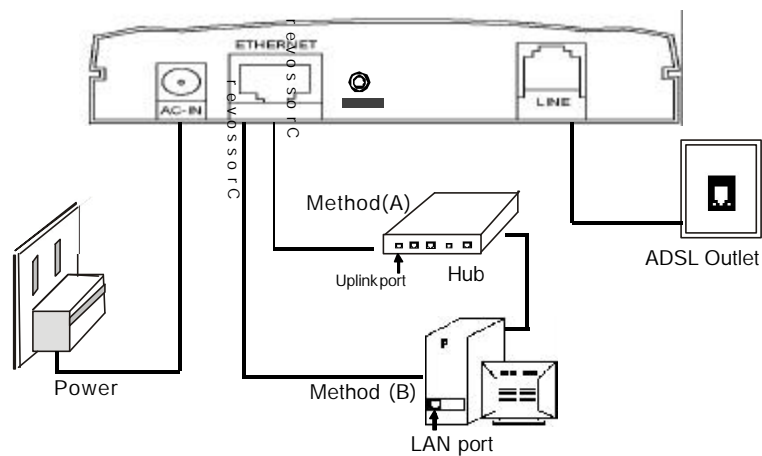
LAN When the LAN LED is on, the Ethernet has connected with PC successfully.

ADSL When the ADSL LED blinks, the ADSL Router is ready to connect. The ADSL LED is always on when connection is successful.

Hardware Installation

**** Note:** When plug in power cord, router will start working after around 15 seconds.

**** Note:** If you push the "Reset" button, all the parameter setting will back to factory default value.



Configuration Setting

LAN Card Setting

When PC is on. Move cursor to 'Network Neighborhood'

1. Push the right button of mouse, click '**Properties**'
2. Select the **TCP/IP of your LAN card**
3. Click '**Properties**'
4. Under '**IP address**', select '**Obtain an IP address automatically**'
5. Under '**DNS Configuration**', select '**Disable DNS**'
6. Under '**Gateway**', please remove all installed gateway
7. Click '**OK**', system will ask you to reboot your PC.
8. Restart your PC.

ADSL Modem Router Parameter Setting

1. Run browser first. Enter the IP address: **http://10.0.0.2**(factory default) to access this ADSL Modem Router. The WEB-based management panel is shown on screen. Please enter the user name and password.

2. This ADSL Modem Router provides two-level password protection(see figure 1). Default user name and password as below.

- * User level User Name: **user** Password: **password**
- * Administration Level User Name: **admin** Password: **conexant**

**** Note:** The User and Administration password can be changed at the Password Configuration page. If you forget the changed password, please reset your ADSL Modem Router by reset button and all the parameter settings will back to factory default.



Figure 1

3. After entering the user name and password, you will see the Homepage shown as below(see Figure 2). Please select the **Configuration** section to start setting up your ADSL Modem Router.

**** Note:** Please refer Annex A(page 9) for ADSL Modem Router configuration.

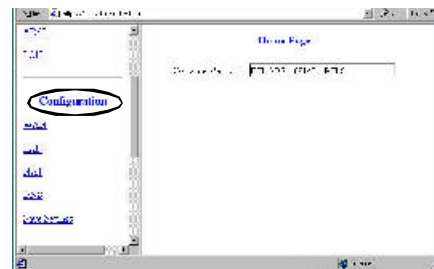


Figure 2

4. Following is example of "Router mode for Static IP with DHCP function" (see figure 3).

Go to the **Configuration** section, click **WAN**. Enable **VC 0**, enter **VPI**, **VCI**, **Static IP address**, **Subnet Mask** value(Note: please get this data information from your ISP or phone company). Click "**submit**" first and then click **Advanced Setup** to setup **Encapsulation**.

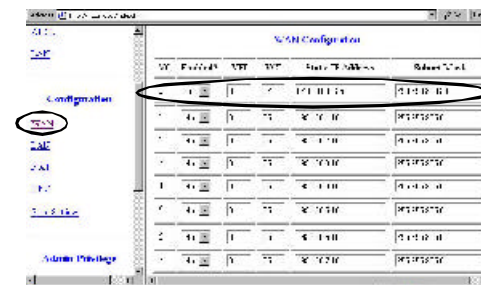


Figure 3

5. The **WAN Advanced Configuration** menu appears(see figure 4), please set the settings. **ENCAPSULATION**: refer to the data from your ISP or the phone company; **BRIDGE**: select **Disable**, keep the other setups unchanged and then select **Execute**.



Figure 4

5. Please select **DNS**. Enter the **Default Gateway**, **Preferred DNS Server**, **Alternate DNS Server**, then Click "**Submit**".

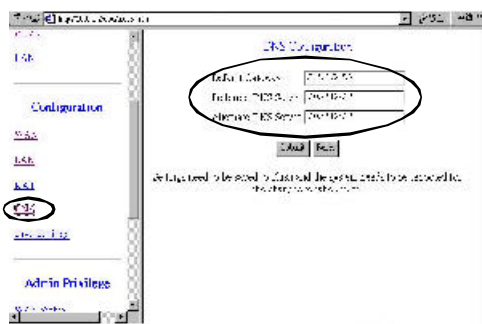


Figure 5

6. Click **Save Settings** -> "**Submit**". This ADSL Modem Router will save these parameter settings and restart automatically. It takes about 15 seconds.

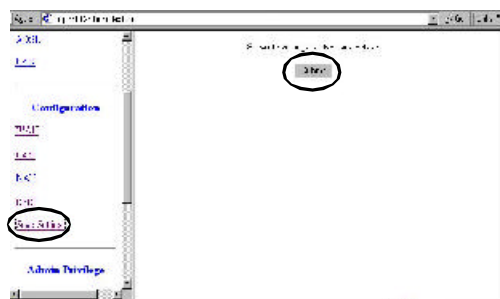


Figure 6

7. Finished!

**** Note:** The default IP address of this ADSL Modem Router is 10.0.0.2. Please keep the changed address in mind if you modify it. If you lose it, you can't access this Modem Router. The only solution is to reset this Router.

Annex A

ADSL Modem Router Configuration Guide

	Bridge Mode (Dynamic IP)	Router Mode (Dynamic IP)	Router Mode (Static IP)
WAN Configuration			
VC0 Enabled	Yes	Yes	Yes
VC1 - VC7 Enabled	No	No	No
VC0 Static IP Address	N/A (0.0.0.0)	N/A (0.0.0.0)	Provided by ISP
VC0 Subnet Mask	N/A (0.0.0.0)	N/A (0.0.0.0)	Provided by ISP
WAN Advanced Configuration			
Encapsulation*	1483 Bridged IP LLC	PPPoE LLC / PPPoA VCM	1483 Routed IP LLC
Bridge	Enabled	Disabled	Disabled
PPP Service Name	N/A	Blank	N/A
PPP User Name	N/A	Provided by ISP	N/A
PPP Password	N/A	Provided by ISP	N/A
DHCP client enable	Check None	Checked	Check None
LAN Configuration			
DHCP Server	Not Checked	Checked	Checked
NAT Configuration			
NAT	Disabled	NAPT	NAPT
DNS Configuration			
Default Gateway	N/A (0.0.0.0)	N/A (Automatically Assigned by ISP)	Provided by ISP
Preferred DNS Server	N/A (0.0.0.0)	N/A (Automatically Assigned by ISP)	Provided by ISP
Alternate DNS Server	N/A (0.0.0.0)	N/A (Automatically Assigned by ISP)	Provided by ISP
RIP Configuration			
RIP	Disabled	Disabled	Disabled

* Encapsulation is based on the ISP configuration. It may be different for different ISPs and countries.