

ISDN TA PC Card User Manual

CONTENTS

Introduction.....	1
System Requirements	1
Specifications.....	1
Parts Names	2
FIRST THING TO KNOW ABOUT SOFTWARE INSTALLATION.....	4
Software Installation for Windows 95/98.....	6
Installing the Device Driver.....	6
Installing The Application Programs	6
VCOMM Mode	6
Making PPP Connection (Basic Internet).....	6
Making Multilink PPP Connections.....	9
Making V.110 Connections	9
Making V.120 Connections	10
Making Multi-destination Connections	10
CAPI Mode.....	12
Installing RVS.COM Lite	12
Making PPP connections.....	14
Making Multilink PPP Connections.....	15
Making V.110 Connections	19
Making V.120 Connections	19
Making X.75 Connections.....	20
EuroFile Transfer Applications.....	20
Making “Modem over ISDN” Connections	22
Making G3 Fax over ISDN.....	23
Voice Applications	26

NDIS Mode.....	30
Making PPP Connections.....	30
Making Multilink PPP Connections.....	31
Software Installation for Windows NT4.x.....	34
Installing the Device Driver.....	34
Installing the Application Programs	39
NDIS Mode.....	39
Internet Access.....	40
CAPI Mode.....	41
Installing RVS-COM Lite.....	41
Applications.....	41
Making PPP connections.....	41
Making Multilink PPP connections.....	42
Making “Modem over ISDN” Connections (Using CAPI software)	
.....	43
Making G3 Fax over ISDN.....	44
ISDN AT Commands	45
Using ISDN AT Commands.....	45
Appendix: ISDN AT Command.....	47

INTRODUCTION

The ISDN TA PC Card brings the latest in mobile communication technology with flexibility and convenience. With the wide range ISDN signaling protocols switches supports, mobile experts may enjoy the mobile communication across the world and the high speed digital service.

System Requirements

- Pentium 75 or above
- At least 30MB free hard disk space
- At least 16MB RAM
- PCMCIA Type II/III slot
- PCMCIA Card Services and Socket Services v.2.1 or higher pre-installed
- Windows 95/98 or Windows NT pre-installed

Specifications

Standard

PCMCIA 2.1 & JEIDA 4.1 compliant

ISDN standards

Basic Rate Access (2B+D)

S/T-Interface:

Compliant with ITU-T I.430

D-channel:

ITU-T Q.921, Q.931

ETSI NET3

B-channel:

V.120,

V.110,

X.75/T.70NL/ISO8208

Async-to-Sync PPP conversion

Multilink PPP,

56 K Modem (CAPI only)

G3 fax (CAPI only)

Voice (CAPI only)

Line Rate

64/56 Kbps on 1 B-channel

128/112 Kbps on 2 B-channel
(PPP/MP)

64/56Kbps on 1 B-channel

16Kbps on D-channel

ISDN Network & Switch Compatibility

National ISDN-1 (NI-1)

AT&T 5ESS Custom

Northern Telecom DMS-100 Custom

DSS1 (Euro-ISDN)

INS-Net 64

Application Program Interface Supported

VCOMM

WinISDN

CAPI 2.0

NDIS WAN

Operating System Supported

Windows 95 and OSR2

Windows 98

Windows NT 4.0

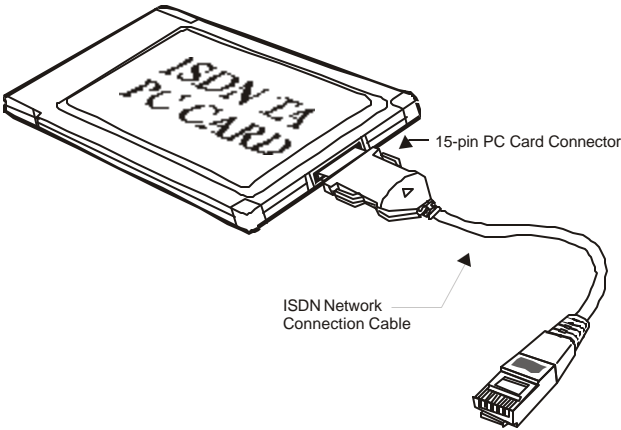
Physical Specifications

RJ-45 ISDN line interface

Dimension: 85.6 x 54 x 5 (mm)

PCMCIA Type II

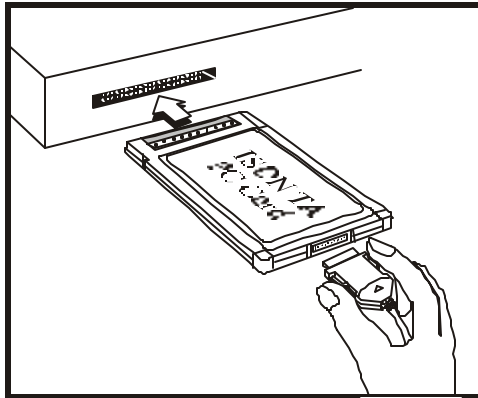
Parts Names



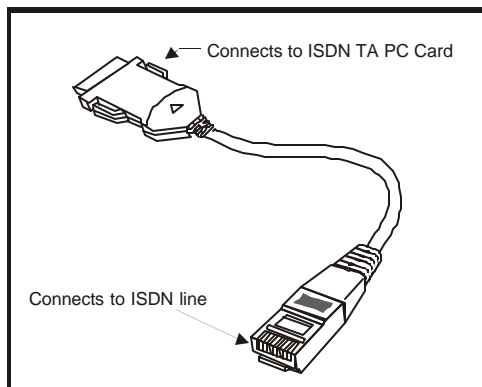
HARDWARE INSTALLATION

If you are using the ISDN TA PC Card under Windows 95/98, Do NOT insert the PCMCIA card until after the software installation is completed.

1. Align the PC card with the arrow sign pointing toward the computer's PCMCIA slot.
2. Connect the 15-pin PC card connectors with the two exposed end of the PC card. Push evenly and steadily until the units 'click'.



Connect the ISDN line to the opposite end of the ISDN Network Connection Cable.

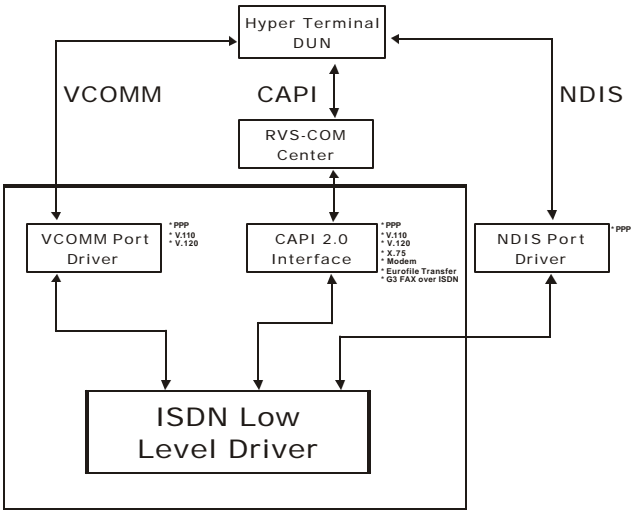


FIRST THING TO KNOW ABOUT SOFTWARE INSTALLATION

The ISDN TA PC Card is designed to support a wide bandwidth of interfaces/drivers for a total solution in different environments. The software setup procedures accordingly vary from interfaces/drivers to interfaces/drivers. To help you set up the software efficiently, the software installation is organized by interfaces under **Windows 95/98** and **Windows NT** respectively.

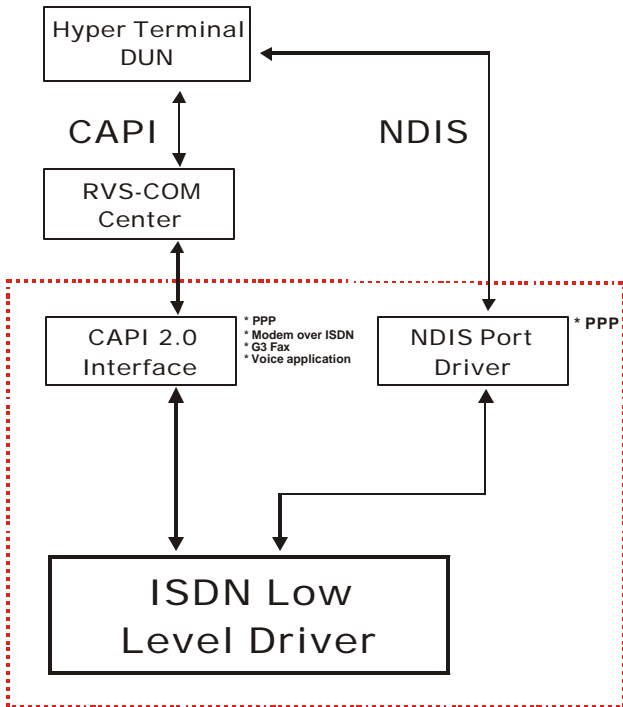
The following figures are illustrated as guideline-like flow charts. If something goes wrong, track down the flow to check if there is any procedure missing while setting up; and move to the corresponding section for details.

Windows 95/98



- ❖ The blocked area indicate that after when **setup.exe** has been executed (see section titled “**Installing Device Driver**”), the Phone Dialer VCOMM Port driver, CAPI 2.0 and the ISDN Low Level Driver were also installed. You may then use Phone Dialer or the functions with VCOMM directly.
- ❖ For CAPI mode, however, it is required to install RVS.COM Center beforehand to enable the functions with CAPI.
- ❖ For NDIS mode, unless the NDIS Port Driver has been installed, the ISDN Low level Driver won’t be able to work.

Windows NT



- ❖ The blocked area indicate that after when **setup.exe** has been executed (see section titled “**Installing Device Driver**”), the Phone Dialer CAPI mode and NDIS were also installed. You may then use Phone Dialer or the functions with NDIS mode directly.
- ❖ For CAPI mode, however, it is required to install RVS.COM Center beforehand to enable the functions with CAPI.

SOFTWARE INSTALLATION FOR WINDOWS 95/98

Installing the Device Driver

1. Insert the device driver compact disc or disks by sequence into your computer.
2. Double-click **My Computer**.
3. Double-click the drive whichever contains the device driver. For example, if you are using disks, insert the disks into drive A, double-click “**3½ Floppy (A:)**”. Or if you are using compact disc, select the CD-ROM drive and double-click folder **Win9x**.
4. Double-click **Setup.exe**. Follow the on-screen instruction.
5. When finished, you will be asked to restart your computer. Before your computer is reset, insert the PCMCIA card into your PCMCIA socket and select **YES** to continue.

When your computer is reset, two additional icons will be added to the tool bar on the bottom right of your screen, i.e. the Line Status and the Dialer, which means the device driver has been installed successfully. You may perform the following procedures to continue.

Installing The Application Programs

*Before you start, make sure the type of your Application Program Interface. The Application Program Interface (API) is used as the interface between the hardware (ISDN TA PC Card) and the application programs. Before performing the installation, make sure the type of API matching your system. The currently supported APIs are **VCOMM**, **NDIS**, and **CAPI**. Move to the specific section titled the appropriate API for your need for installation.*

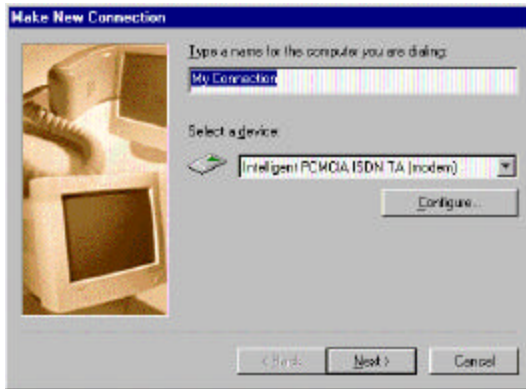
VCOMM Mode

COM port is commonly used for connecting to the external ISDN devices. With the VCOMM COM port emulation, the ISDN multifunction PC Card works exactly like an ISDN TA (Terminal Adapter) external box, which can run with traditional terminal program packages, such as Windows 95 Hyper Terminal, Procom Plus for Windows, Telix, pcAnywhere, etc., to hook up to the on-line services and bulletin boards. In this mode, ISDN AT commands are usually used to drive the ISDN multifunction PC Card.

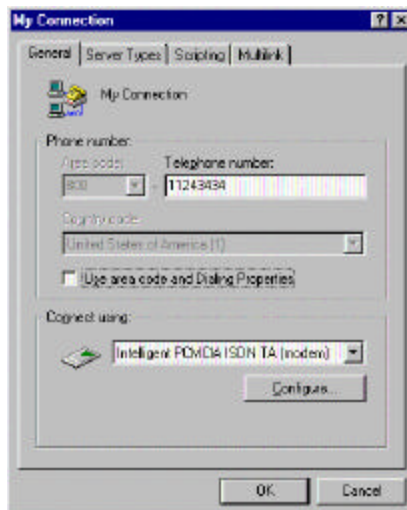
Making PPP Connection (Basic Internet)

1. Go to **My Computer**.

2. Select **Dial-Up Networking**. Double-click **Make a New Connection**, a dialogue box will appear as shown below.



3. Name the new connection appropriately.
4. Select **Intelligent PCMCIA ISDN TA (modem)**.
5. Enter in the area code and phone number of your Internet Service Provider (ISP). Leave out the '-'. (Example: '1234567' NOT '123-4567') Typically, the country and area codes are not required and should be disabled.



- 6. From the **Dial-Up Networking** window right-click your newly created connection. Select **Properties**. On the **General** tab, cancel the selection of **“Use area code and Dialing Properties”** and click **OK**.
- 7. From the **Start** menu, select **Programs**. Select **Configuration Utility**. Click **Config**. A dialogue box will prompt you to change the settings to fit your needs.



- 8. Select the proper switch type corresponding to your need. Switch Type varies between countries. Although you have the option of **“Automatic”** as a selection, it is highly recommended that you chose a specific selection, to reduce the chance of incompatibility. Typically the selections are as follows:

Areas	Switch Types
Canada & United States	Northern Telecom & NI-1
Japan	INS Net 64
Taiwan	DSS1 (ETSI)
Europe	DSS1 (ETSI)

- 9. Enter the ISDN phone numbers and the Service Profile Identifier. Number (SPID) will be supplied by your local ISDN telephone company.

[NOTE: With the “INS Net 64” & “DSS1 (ETSI)” switch types, there are no SPID’s to be entered.]

- 10. Now you are ready to connect the ISDN TA PC card to your system. Refer to the Hardware Installation section for details.

Making Multilink PPP Connections

The Intelligent ISDN TA PC Card supports the combining of two 64 Kbps data channels into the equivalent of a single 128 Kbps line, which is known as Multi-Link connection. To make the multilink PPP connections, firstly the PPP connection has to be completed, and the hardware (the ISDN TA PC Card) has been properly installed. Perform the following steps to proceed.

1. Go to the **Start** menu. Point to **Program**. Select **Configuration Utility**. Execute **CONFIG**.
2. Open “**General**” tab. Click “**MP Enabled**” in “**PPP Setting**”.
3. Apply the other settings, “**BOD Enabled**” and “**Second Phone No.**” if available.

Making V.110 Connections

1. Execute “**Config**” in **Configuration Utility**.
2. Select the **COM Port Setting** tab. Select “**V.110**” for “**B-Channel protocol**” in “**1st COM port setting**”.
3. Make sure **Dial-Up Networking** is well installed.
4. Double-click “**Make New Connection**”.
5. Name the new connection appropriately. For example, “**V.110**”.
6. Select “**Intelligent PCMCIA ISDN TA (modem)**” in the “**Select a device**” box.
7. Click **Configure**, and specify the V.110 user rate in the **Maximum speed** box. Click **Next**.

Maximum speed=1200 V.110 user rate = 1200 bps.

Maximum speed=2400 V.110 user rate = 2400 bps.

Maximum speed=4800 V.110 user rate = 4800 bps.

Maximum speed=9600 V.110 user rate = 9600 bps.

Maximum speed=19200 V.110 user rate = 19200 bps.

Maximum speed=38400 V.110 user rate = 38400 bps.

Maximum speed=57600 V.110 user rate = 57600 bps*

* Available only for Japan

- If the maximum speed you selected is not listed above, the system will automatically adapt the V.110 user rate to the default setting at 38400 bps.
8. Enter the ISDN phone number of the remote party that you want to call.
 9. Click “**Next**”, and click “**Finish**” to complete the setting.

Making V.120 Connections

1. Execute “**Config**” in “**Configuration Utility**”.
2. Select **COM Port Setting** tab. Select “**V.120**” for “**B-Channel protocol**” in “**1st COM port setting**”.
3. Go to **My Computer**. Make sure “**Dial-Up Networking**” (DUN) is well installed.
4. Double-click **Make New Connection**.
5. Name the new connection appropriately. For example, “V.120”.
6. Select “**Intelligent PCMCIA ISDN TA (modem)**” in the “**Select a device**” box.
7. Click “**Configure**” button, and give the appropriate settings. Ignore the “**Maximum speed**” setting (but you are still recommended to set to the speed at higher than 64000 bps, such as 115200 or higher). Click “**Next**”.
8. Enter the ISDN phone number of the remote party that you want to call.
9. Click “**Next**”, and click “**Finish**” to complete the setting.

Making Multi-destination Connections

The Intelligent ISDN TA PC Card enables the connections between the different destinations with two different protocols at the same time. For example, you can separately and independently use one ISDN B-Channel (say B1-Channel) with PPP protocol to connect to ISP, and the other B-Channel (say B2-Channel) with V.110 or V.120 to connect to the corporate network in head quarter or branches. This feature lets the ISDN TA PC Card fully utilize the ISDN two B-Channel resources.

1. Set up the PPP connection for the first application. Refer to the “**PPP Connection (method 1)**” section for setting details.
2. Set up the second application, for example, V.120:

(a) Add the 2nd COM port.

- Enter “**Control Panel**” → “**Modem**”. Click “**Add**” button.
- Check “**Other**”. Click “**Next**”.
- Check “Don’t detect my modem; I will select it from a list”. Click “**Next**”.
- Select “**Intelligent ISDN**” in “**Manufacturers**”, and “**Intelligent PCMCIA ISDN TA (modem)**” in “**Models**”. Click “**Next**”.
- Select “**ISDN_2nd_COM**”. Click “**Next**”.
- Click “**Finish**”.
- Now you can find “**Intelligent PCMCIA ISDN TA (modem) #2**” in “**Control Panel**” → “**Modem**”.

(b) Follow the steps in “**V.120 Connection**” section. Select “**Intelligent PCMCIA ISDN TA (modem) #2**” for V.120 connection setting at step (6).

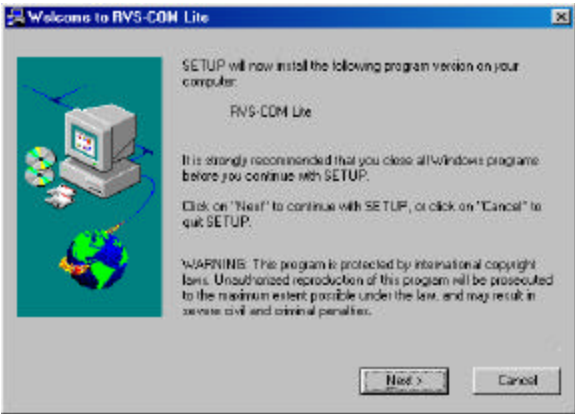
(c) Finish the other steps to complete the V.120 connection settings.

CAPI Mode

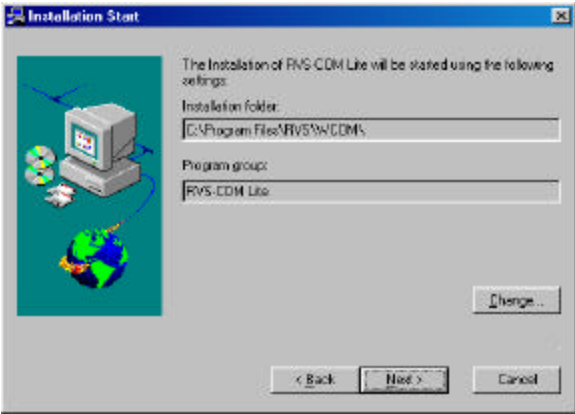
Before starting any applications in CAPI mode, the RVS-COM “CommCenter” is required to be executed. If the RVS.COM is not yet installed on your computer, perform the following procedures.

Installing RVS.COM Lite

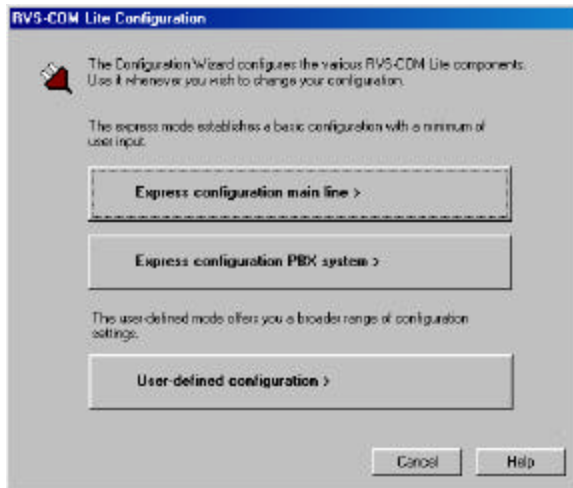
1. Insert the RVS-COM compact disc into your CD-ROM drive. Press **Yes** when the opening screen appears.



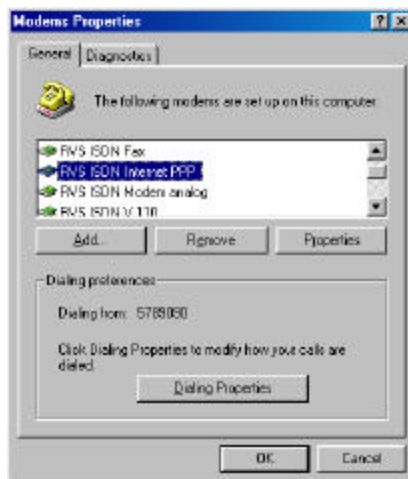
2. Follow the on-screen instruction to proceed.



3. When finished, the installation program will restart your computer. When your computer is restarted, the following screen will appear.

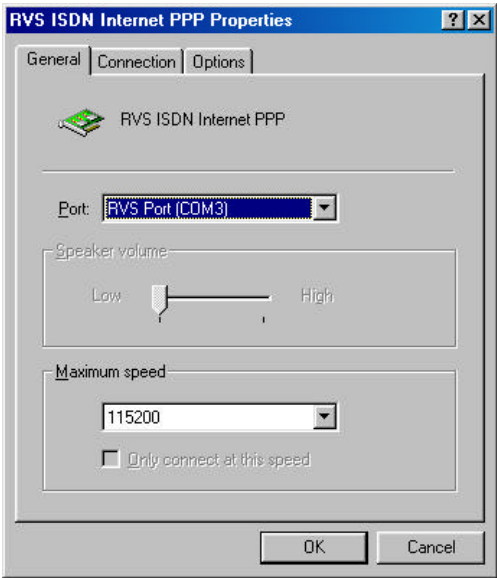
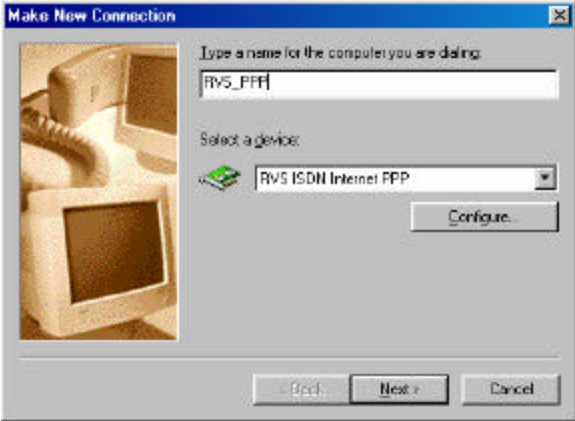


4. Click **Express configuration main line**>. Follow the on-screen instruction to finish the installation.
5. To make sure if the RVS-COM has been well installed, you may check by going to the **Start** menu->**Settings**->**Control Panel**->**Modems** to see if “**RVS ISDN Internet PPP**” exists in there as illustrated below.



Making PPP connections

- 1. Execute **RVSCommCenter**.
- 2. Click **“Make new Connection”** in the **Dial-Up Networking** folder. Name the new connection appropriately, for example, **“RVS_PPP”**. Select **“RVS ISDN Internet PPP”**.



- 3. Click **Configure....** Select **“RVS Port (COM#)”**. Click **OK**.

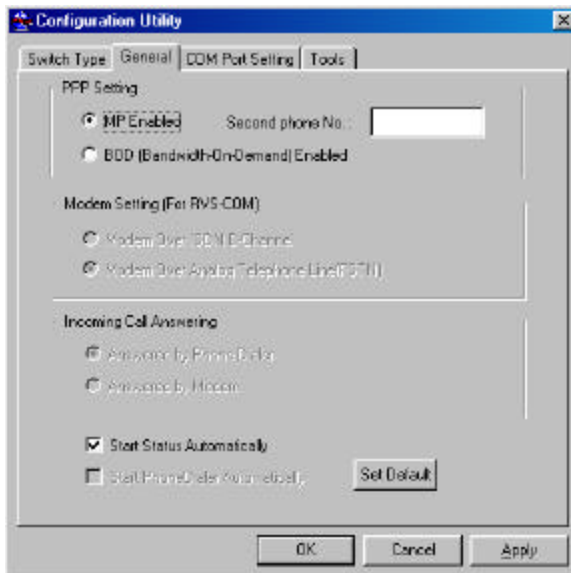
4. Click **Next**. Enter the ISDN phone number of your ISP. Click **Next**.
5. Click **Finish**. Now you are ready for Internet access through CAPI.

Making Multilink PPP Connections

There are two ways to setup the ISDN PC Card for Multilink PPP (MP or MLP) connections through CAPI mode.

Method 1

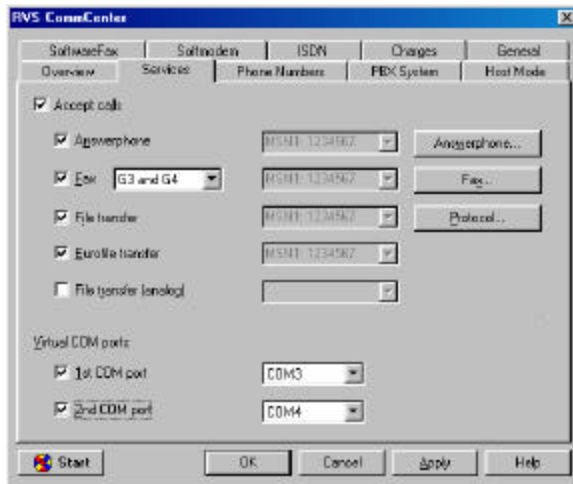
1. Execute **RVSCmmCenter**.
2. Complete the PPP connection setup as described in the previous section.
3. Execute **Config. (Start->Programs ->Configuration Utility)**.
4. Open the **General** tab. Click **MP Enabled** in **PPP Setting**. Apply the other settings, **BOD Enabled** and **Second Phone No.** if available.



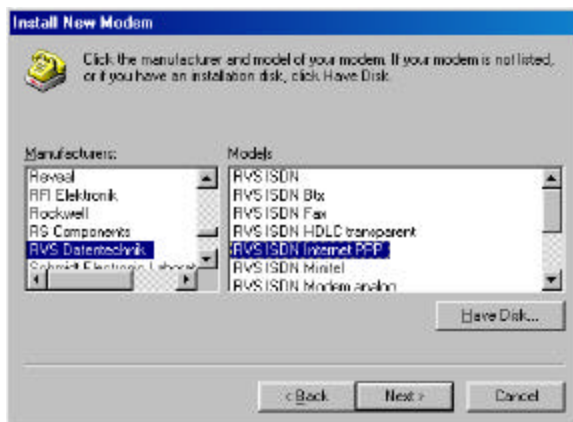
5. Now you are ready for Internet access.

Method 2

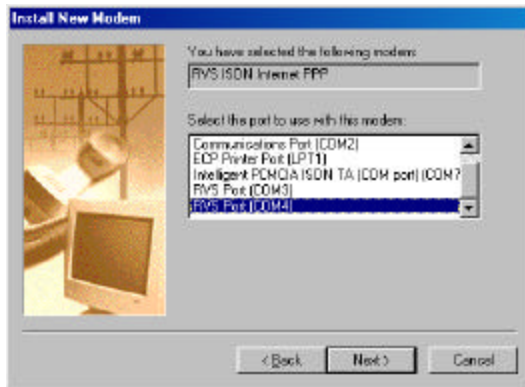
1. Execute **RVSCmmCenter**. Click the **Service** tab.



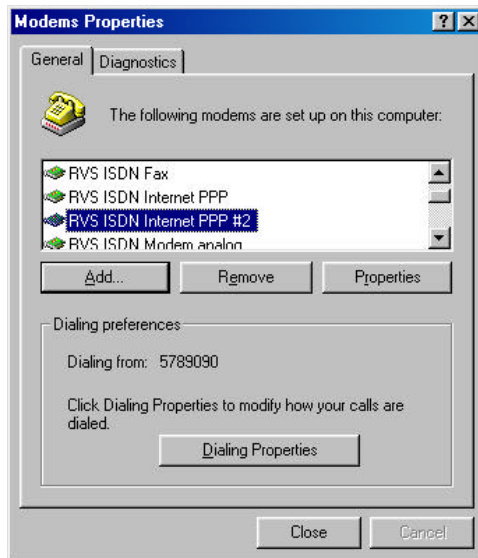
2. When the above dialog box appears, check **2nd COM port** and click **OK**.
3. Go to **My computer**. Select **Control Panel**. Double-click **Modem**. Click **Add**.
4. Select **“Other Modem”**. Click **“Next”**.
5. Select **“Don't detect my modem; I will select it from a list”**. Click **Next**.
6. Select **“RVS Datentechnik” – “RVS ISDN Internet PPP”**. Click **Next**.



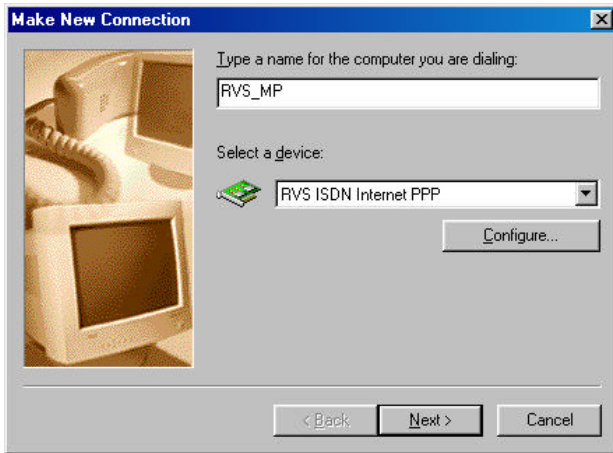
7. Select the RVS COM ISDN port that you just added. Click **Next**.



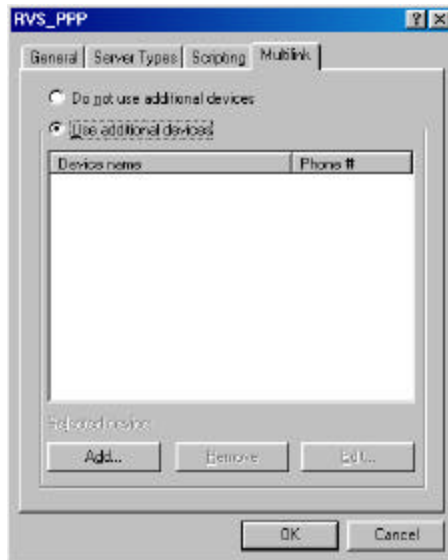
8. Click **“Finish”**.
9. Now you can see **“RVS ISDN Internet PPP #2”** in the modem list in **“Control Panel”** → **“Modem”**.



10. Enter **“Dial-Up Networking”** folder in **My Computer**.
11. Click **“Make new Connection”**, and name the new connection appropriately. For example, **“RVS_MP”**. Select the modem **“RVS ISDN Internet PPP”**. Click **Next**.



12. Enter the ISDN phone number your ISDN ISP. Click Next to finish.
13. Right-click the new connection in **Dial-Up Network**. Click **Property**.
14. Click the “**Multilink**” tab. Check “**Use additional device**”. Click **Add**. Select **RVS ISDN Internet PPP #2**. Click **OK** to complete the Multilink PPP settings.



Making V.110 Connections

1. Execute “**CommCenter**”. And make sure all the settings are well and correctly configured.
2. Go to **My Computer**. Make sure **Dial-Up Networking** (DUN) is well installed.
3. Double-click “**Make New Connection**”.
4. Name the new connection appropriately. For example, “RVS_V.110”.
5. Select “**RVS ISDN V.110**” in “**Select a device**” box.
6. Click “**Configure**” button, and specify the V.110 user rate in “**Maximum speed**” box. Click “**Next**”.

Maximum speed=1200 V.110 user rate = 1200 bps.

Maximum speed=2400 V.110 user rate = 2400 bps.

Maximum speed=4800 V.110 user rate = 4800 bps.

Maximum speed=9600 V.110 user rate = 9600 bps.

Maximum speed=19200 V.110 user rate = 19200 bps.

Maximum speed=38400 V.110 user rate = 38400 bps.

Maximum speed=57600 V.110 user rate = 57600 bps*

* Available only for Japan

If the maximum speed you selected is not in the above list, the system will automatically adapt the V.110 user rate to the default setting at 38400 bps.

7. Enter the ISDN phone number of the remote party that you want to call.
8. Click “**Next**”, and click “**Finish**” to complete the setting.

Making V.120 Connections

1. Execute “**CommCenter**”. And make sure all the settings are well and correctly configured.
2. Double-click “**Make New Connection**”.
3. Name the new connection appropriately. For example, “V.120”.
4. Select “**RVS ISDN V.120**” in the “**Select a device**” box.

5. Click “**Configure**” button, and give the appropriate settings. Ignore the “**Maximum speed**” setting (you are recommended to set to the speed at higher than 64000 bps, such as 115200 or higher). Click “**Next**”.
6. Click “**Next**”.
7. Enter the ISDN phone number of the remote party that you want to call.
8. Click “**Next**”, and click “**Finish**” to complete the setting.

Making X.75 Connections

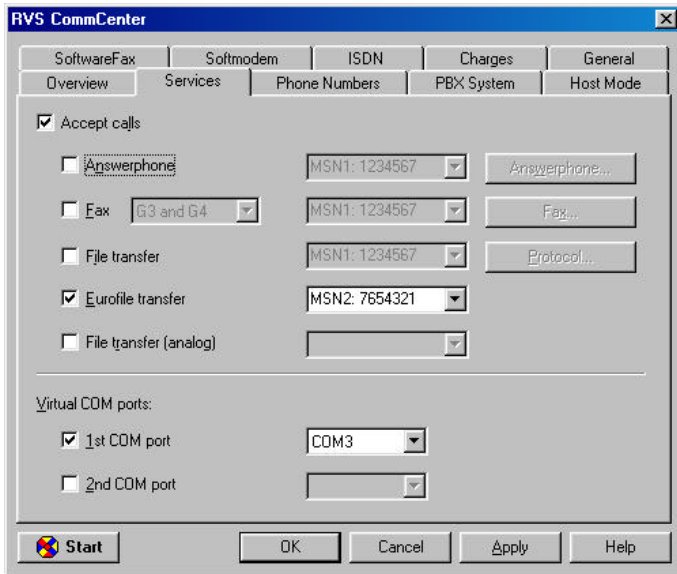
1. Execute “**CommCenter**”. And make sure all the settings in the tab are well and correctly configured.
2. Enter “**Control Panel**” → “**Modems**”. Select “**RVS ISDN X.75 transparent**”. Click “**Properties**” button. Make sure the COM port setting is correctly assigned.
3. Run Windows 95 “**Hypertrm**”. Name the new connection appropriately. For example, “**RVS_X75**”. Click “**OK**”.
4. Enter the ISDN phone number that you want to connect to.
5. Select “**RVS ISDN X.75 transparent**” in “**Connect using**” box. Click “**OK**”.
6. Click “**Dial**” button to make dialing.

After establish the ISDN link, you can use the data transmission protocol, such as Z-modem or X-modem, for data transfer.

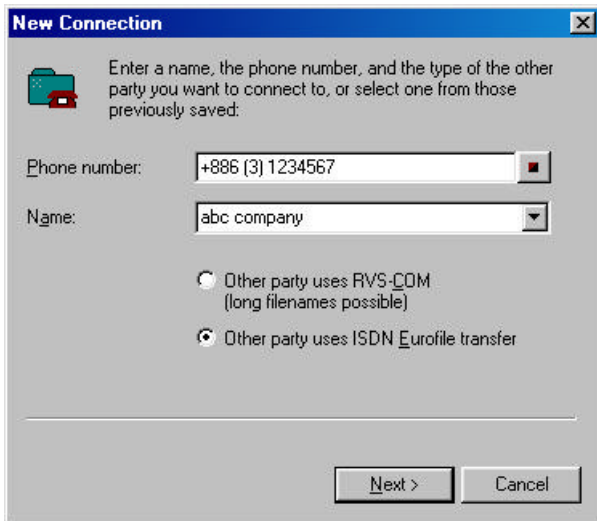
For servers which support X.75 T.70NL protocol, you have to choose “**RVS ISDN X.75 T.70NL**” in the above setup steps.

EuroFile Transfer Applications

1. Start **RVS CommCenter**. If your are to act as an answering party (host mode), select the **Accept calls** check box, otherwise clear this box to act as the calling party. Check **Eurofile transfer**.



2. Start the RVS **TransferMaster**. The **New Connection** dialog appears.



3. Select, by opening the list of the field Name, another party that has already been saved, or enter a Name for a new other party. Enter the

Phone number of the other party and check **Other party uses ISDN Eurofile transfer**. Click **Next**.

4. Enter the details for the connection in the **Connect To** dialog box. Click **Connect**.

Connect To

qqq

Enter your user name/ID and your password for the other party you are calling. If you do not have a name/ID leave the fields blank.

User name/ID:

Password:

Save password

Phone number: +886 (3) 1234567

Device: ISDN Eurofile Transfer

Location: New Location

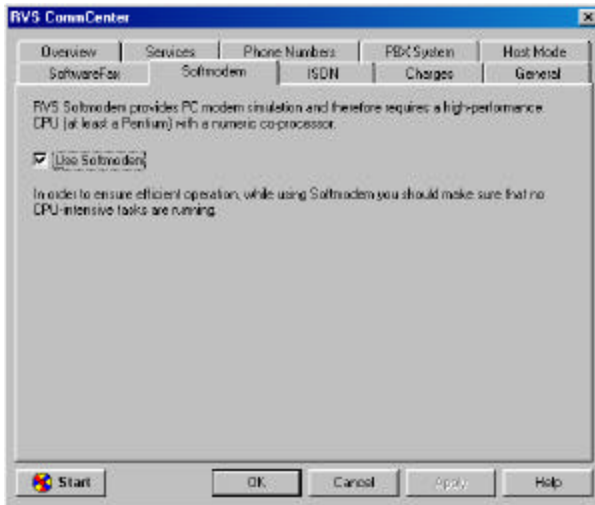
Connect Apply Cancel

5. The connection will be established and you will then see the folder that the other party has made available to you for access. Use Drag & Drop or the Clipboard (Copy / Paste) to transfer files between Explorer windows or the Desktop on your PC and the folder on the other party's PC, and vice versa. Access any sub-folders on the remote PC by double-clicking on the symbols. To disconnect, select **Disconnect** from the **Connection** menu, or click the **Disconnect** symbol.
6. If you have entered new connection data you are prompted to save the connection data when you **Exit** RVS TransferMaster. The new other party is then added to the selection list of the field Name in the dialog box **New Connection**.

Making "Modem over ISDN" Connections

Using RVS-COM Softmodem

1. Start **RVSCommCenter**.
2. Open **Softmodem** tab. Check **Use Softmodem**. Click **OK**.

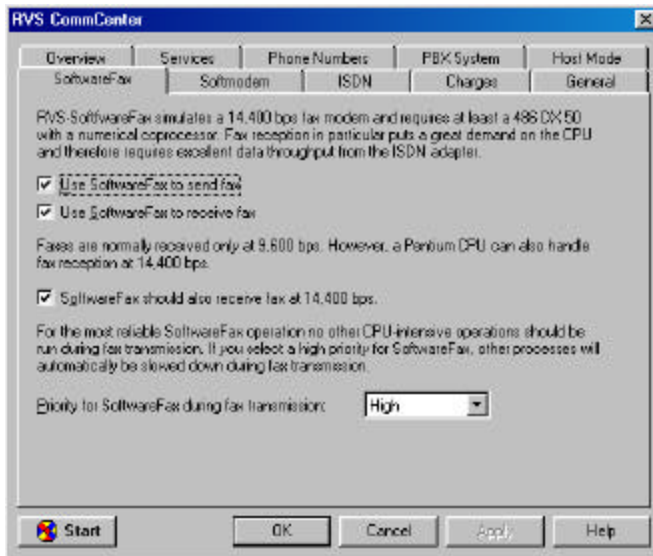


3. Open the **ISDN** tab. Select appropriate ISDN voice encoding scheme for your location. Generally, you should select “**A-law**” for European countries, and “**Mu-law**” for N. America.
4. Run “**Config**” in “**Configuration Utility**”.
5. Open “**Switch type**” tab. Choose appropriate “**Voice Encoding**” scheme.

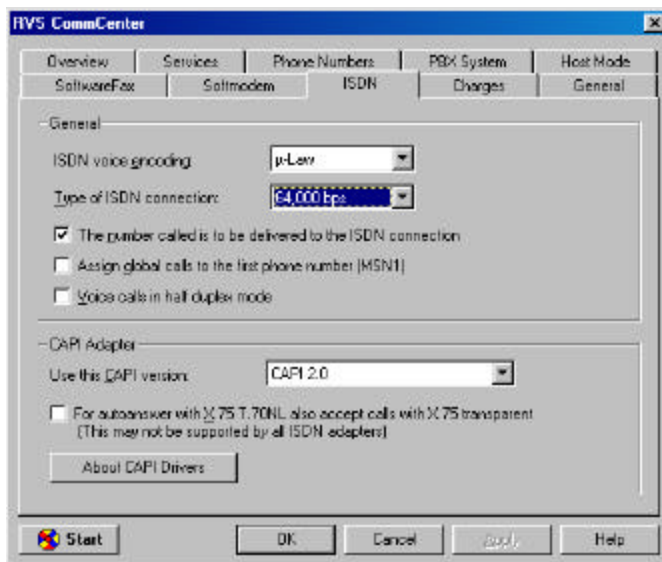
Now you are ready to use the RVS-COM’s Softmodem function. Refer to the RVS-COM on-line documentation for application details.

Making G3 Fax over ISDN

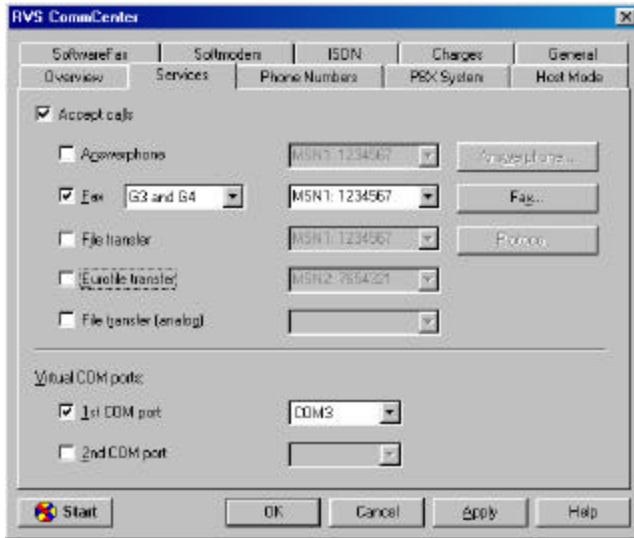
1. Start **CommCenter**.
2. Open the **SoftwareFax** tab. Select “**Use SoftwareFax to receive fax**” to receive a fax. Or select “**Use SoftwareFax to send fax**” to send a fax.



- Open “ISDN” tab. Select appropriate ISDN voice encoding scheme for your location. Generally, you should select “A-law” for European countries, “Mu-law” for North America

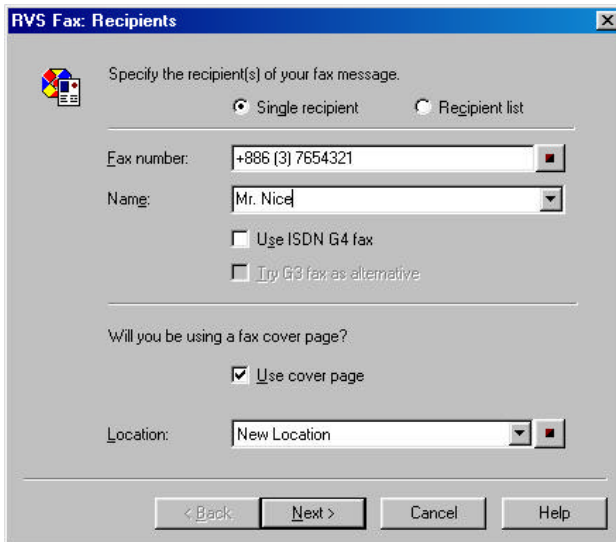


4. Open the **Service** tab. Select **Accept calls**. Select **Fax**. Click **OK**.

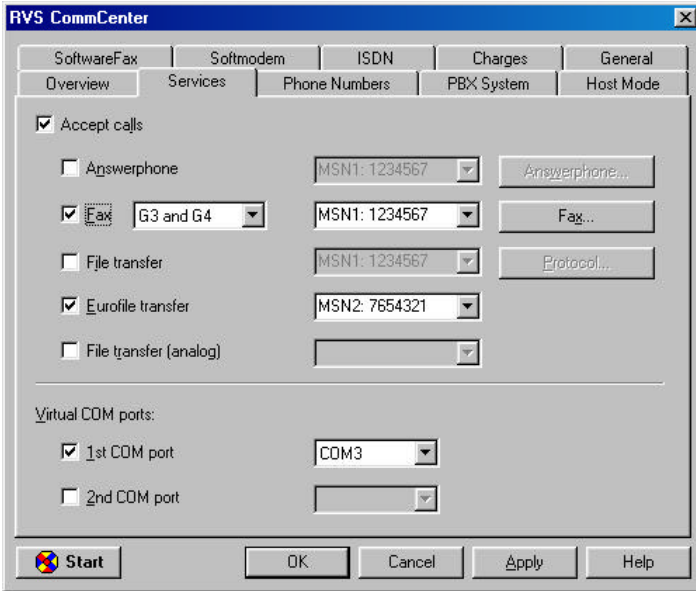


Sending a fax

1. Start **Create New Fax** in the RVS-COM group programs. Click **OK**.



1. Follow the on-screen instruction to enter the necessary information. When all set, RVS will send out the fax for you automatically.



Receiving a fax

1. Wait for incoming fax calls.
2. You can go to **Inbox** to read the incoming fax.

Voice Applications

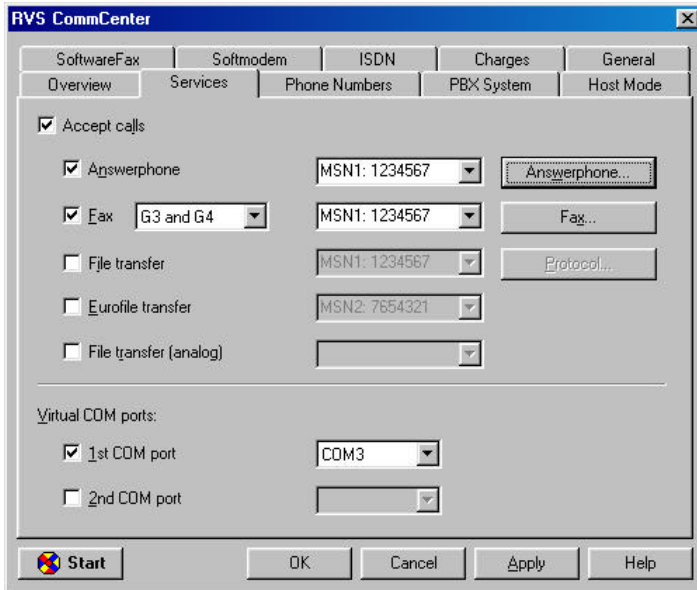
The voice applications includes:

1. Digital answering machine
2. ISDN Phone (acting like a telephone set, that you can communicate with the remote parties over ISDN line)

To fully use the voice applications, especially the ISDN Phone service, a full-duplex audio device (sound card) is required. Full-duplex means, that your audio device can handle incoming and outgoing sound signals simultaneously (i.e. you can listen and talk at the same time). If you do not have full-duplex, then you can only hear from the caller. However, this will still let you run the answering machine function.

Digital Answering Machine

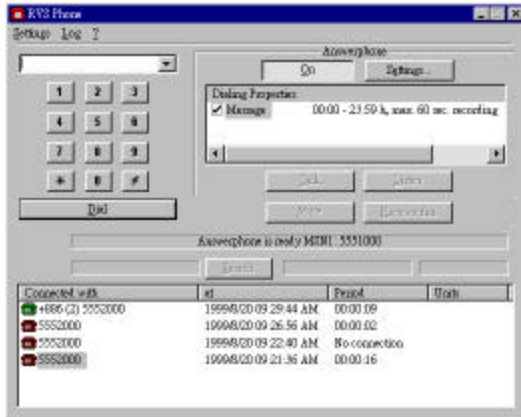
1. Start **RVS CommCenter**.
2. Open the **Service** tab. Check **Accept calls**. Check **Answerphone**.



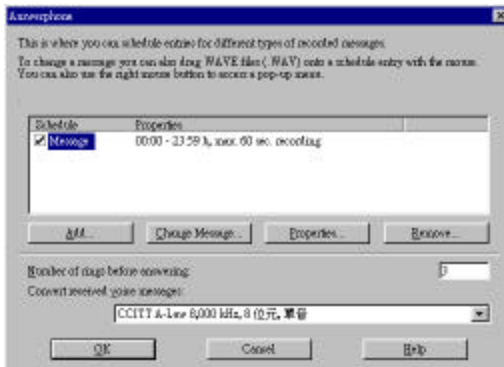
3. Open the **ISDN** tab, select the appropriate ISDN voice coding scheme for your location. A-law is usually used in European countries, and Mu-law for North America.
4. Make sure all the other settings in ‘**RVS CommCenter**’ are correctly configured. Click **Ok**.
5. Run “**Config**” in “**Configuration Utility**”.
6. Open “**Switch type**”. Choose appropriate “**Voice Encoding**” scheme. The setting should be consistent with RVS-COM in step (3). Perform the following steps to record

Voice recording

1. Start **Telephone** in RVS-COM program group. Click the **Answerphone** function bar to toggle to the **ON** state. (for the **OFF** state is for **ISDN Phone** utility.)



2. Click **Settings** to record/edit your greeting message.



The incoming voice message will be stored in “**Inbox**”. Double-click the received voice mails to play back the messages.

ISDN Phone

1. Start RVS-COM “**CommCenter**”.
2. Open the **Service** tab. Clear the selections of the **Accept calls** and the **Answerphone** check box.
3. Open the **ISDN** tab, select the appropriate ISDN voice coding scheme for your location. A-law is generally used in European countries, and Mu-law for North America.

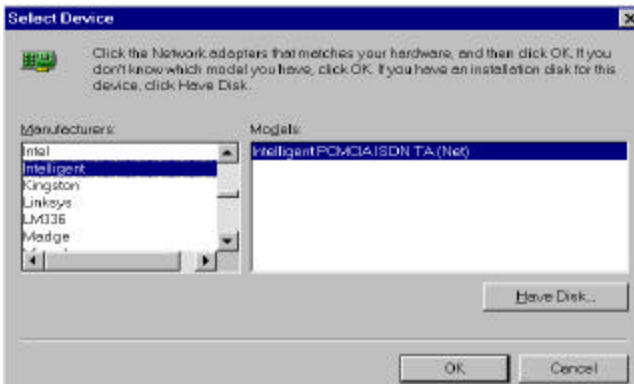
4. Make sure all the other settings in “**CommCenter**” are correctly configured. Click **OK**.
5. Run “**Config**” in “**Configuration Utility**”.
6. Open “**Switch type**”. Choose appropriate “**Voice Encoding**” scheme. The setting should be consistent with RVS-COM in step (3).
7. Start **Telephone** in “**RVS-COM Lite**” program group.
8. Click “**Answerphone**” function bar to the **OFF** state (for the **ON** state is for “**Answering machine**” services).
9. Connect the microphone and speakerphone to the audio interface(s) on your laptop.

When the calls come in, the “**RVS Phone**” will appear automatically. Click **Accept** button to pick up the calls. When finished, click “**Hang Up**” to end the connections.

NDIS Mode

NDIS is dedicatedly designed for Internet connections with Microsoft ISDN Accelerator Pack. Perform the following steps to install the NDIS driver,.

1. Make sure ISDN Accelerator Pack is pre-installed, and the PC Card is firmly seated.
2. Go to **Control Panel**. Select **Add New Hardware**. Click **Next**.
3. Select “**No**” for “**Do you want Windows to search for your new hardware**”. Click “**Next**”.
4. Select “**Network adapters**” in “**Hardware types**” list. Click “**Next**”.
5. Select “**Intelligent**” in “Manufacturers”, and “**Intelligent PCMCIA ISDN TA (Net)**” in “Models”. Click “**OK**”.

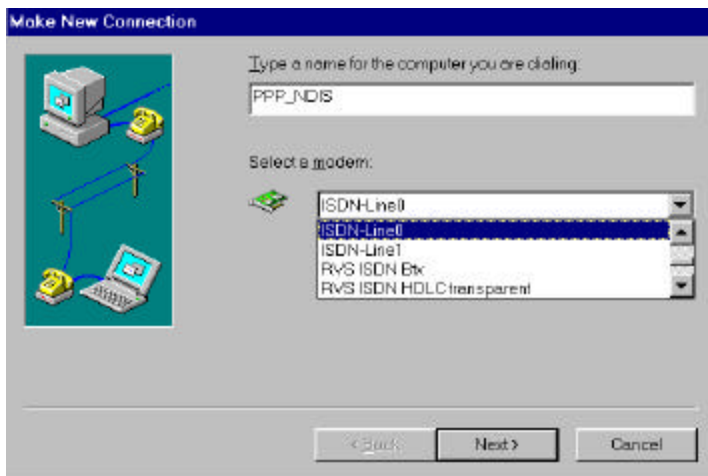


6. Click “**Finish**”.
7. Click “**Next**”.
8. Select the appropriate ISDN “**Switch protocol**”. Click “**Next**”. (The settings will be used for “**Dial-Up Networking**” utility through NDIS WAN application program interface.)
9. Enter the ISDN phone number(s). Click “**Next**”.
10. Click “**Finish**”. When system prompts to ask for updating Windows and NDIS drivers, enter the correct driver path(s) to complete the installation.

Making PPP Connections

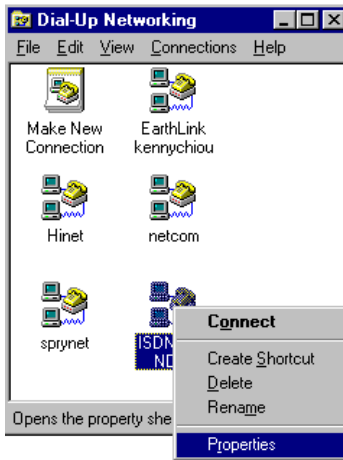
1. Make sure “**Dial-Up Networking**” (DUN) is well installed.

2. Double-click “**Make New Connection**”.
3. Name the new connection appropriately. For example, “PPP_NDIS”.
4. Select “**ISDN-Line#**” (in this case “ISDN-Line0”) in the “**Select a device**” box. Click “**Configure**” to check and configure the other settings. Click “**Next**”
5. Type the ISDN phone number of your ISP that you want to call.
6. Click “**Next**”, and click “**Finish**” to complete the setting.
7. Now you can use the Internet application software, for example, Microsoft Internet Explorer or Netscape Communicator, to connect to ISP.

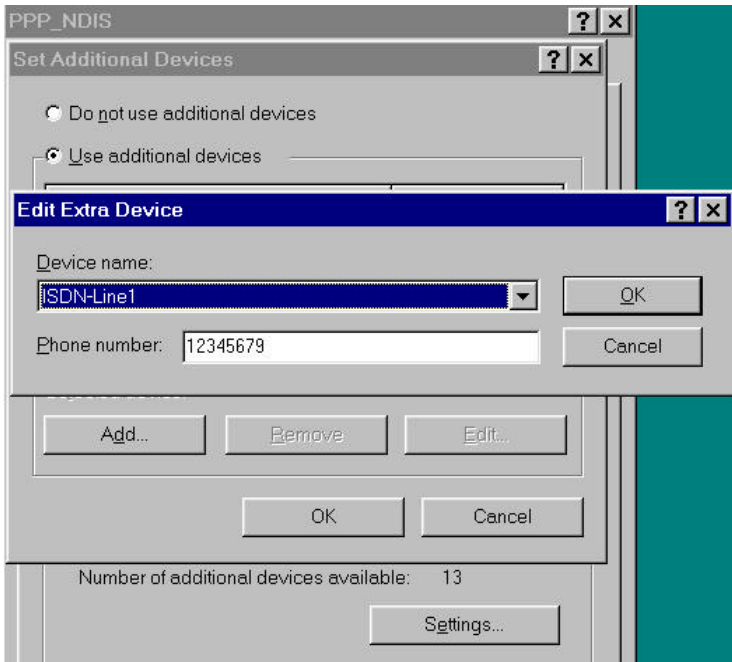


Making Multilink PPP Connections

1. When the PPP connection settings “**method 2**” in the previous section is completed, right-click the NDIS connection icon in DUN and select “**Properties**” (or click the NDIS connection icon, then click “**File**”, then select “**Properties**”).



2. Click **“Settings”** button in **“General”** settings folder. Select **“Use additional devices”**. Click **Add**, and specify the additional device name and the secondary phone number, if available, for making Multi-Link PPP connections.
3. Click **“OK”** to finish the Multi-Link PPP settings.
4. Open the **“Server Types”** folder and complete all the TCP/IP settings accordingly, refer to the information provided by your Internet Service Provider (ISP). Click **“OK”**.

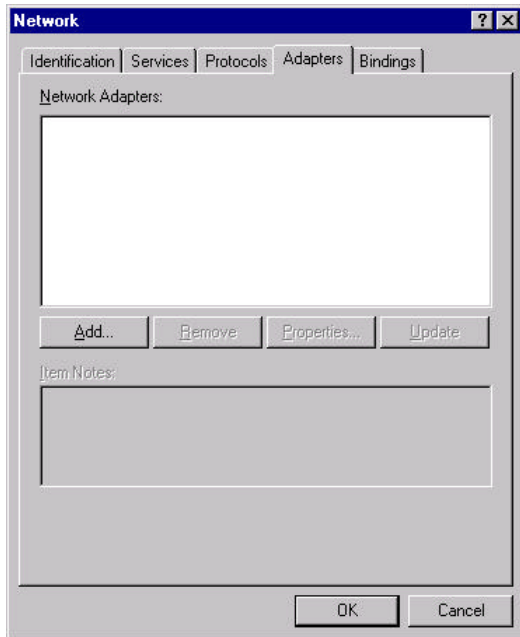


5. Now you can use the Internet application software, for example, Microsoft Internet Explorer or Netscape Communicator, to connect to ISP with Multilink PPP mode.

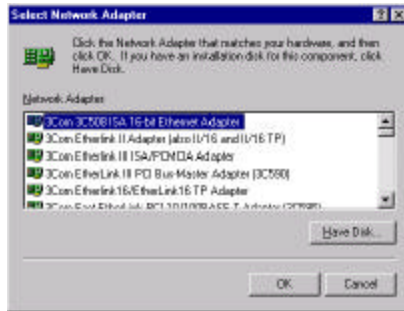
SOFTWARE INSTALLATION FOR WINDOWS NT4.X

Installing the Device Driver

1. Go to **Control Panel**. (You may go to the **Start** menu, select **Settings** to open the **Control Panel** folder.)
2. Select **Network**. A **Network** dialog box will appear as illustrated below.



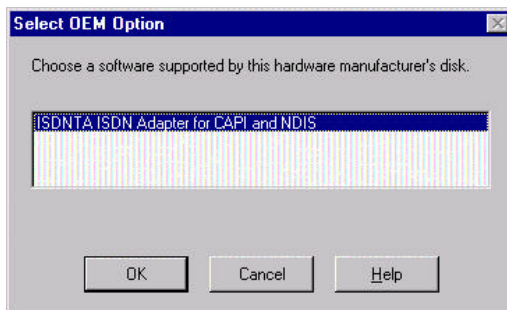
3. Select **Adapter** tab. Click **Add...**
4. The following dialog box will appear. Click **Have Disk...** and click **OK** to continue.



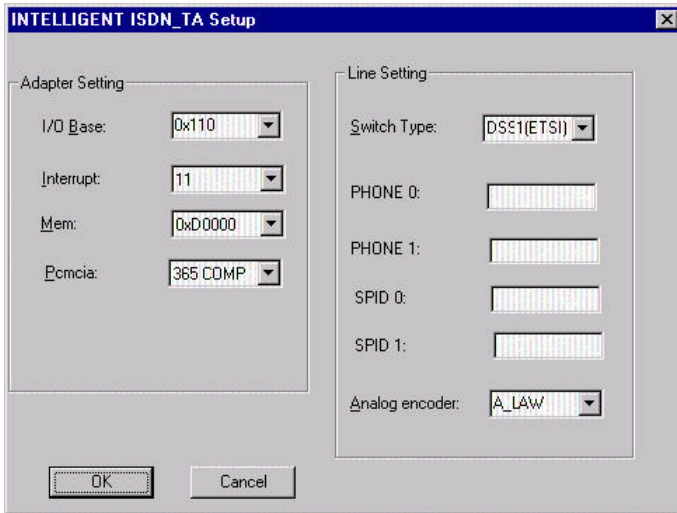
5. If you are using disks to install the device driver, insert the disk into your free floppy drive and type in the drive name, for example, **A:**, to continue. Or if you are using compact disk to install, insert the compact disk into your computer and type in the CD-ROM drive letter followed by **winnt\driver**, and click **OK** to continue.



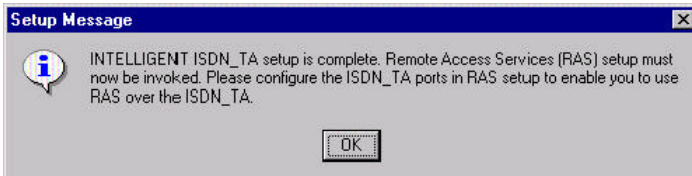
6. When the **Select OEM Option** dialog box appears, click **OK** to continue.



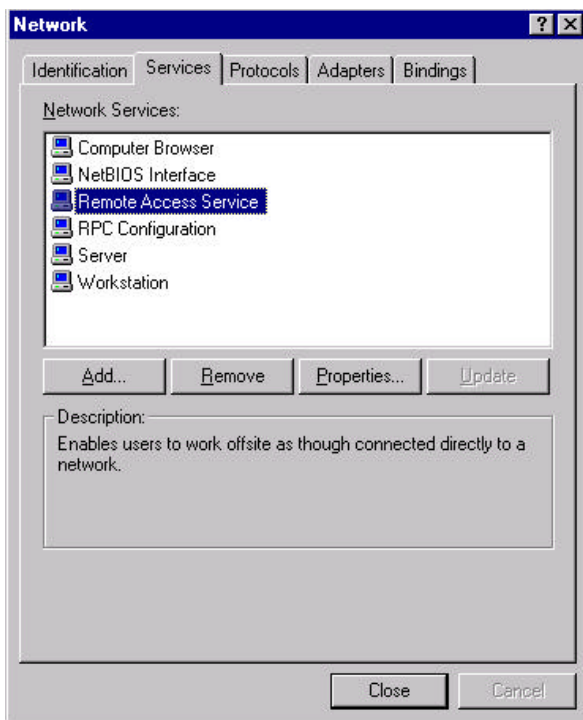
7. The following dialog box will prompt you to change the I/O and IRQ settings. You may refer to the **Hardware Detection** to know the available addresses to avoid any conflicts with your system. (Go to the **Start** menu. Click **Programs**. Select **Configuration Utility**. Open **Hardware Detection**.)



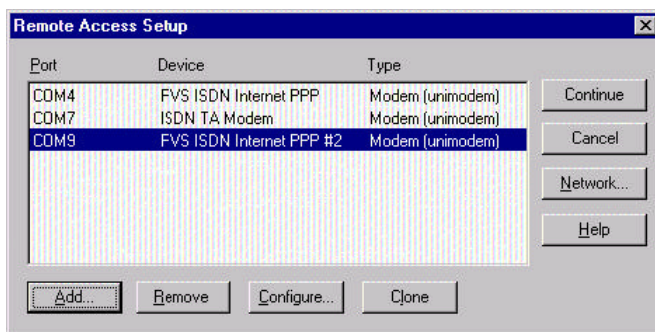
8. Press **OK** to continue. The installation program will proceed automatically.
9. When finished, a **Setup Message** will prompt you to invoke **Remote Access Services (RAS)** setup. Press **OK** to continue.



10. When the **Network** dialog box appear, select the **Services** tab.

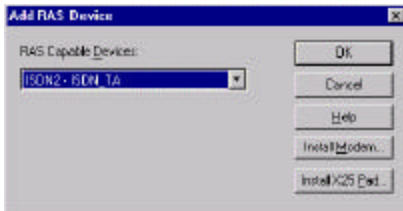
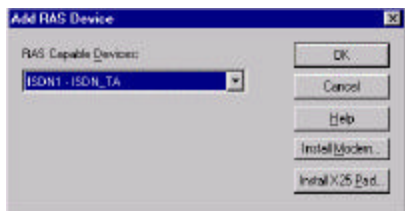


11. Select **Remote Access Service**. Click **Properties**. The following figure will appear.



12. Select **Add...** When the **Add RAS Device** dialog box appears, select **ISDN1 – ISDN_TA** and click **OK**. Press **Add...** again to add **ISDN2-ISDN_TA**. When completed, press **Continue**. You will be prompted to

the **Network** dialog box again. Click **Close** to continue. The installation program will continue automatically. When finished, Windows will prompt you to restart your computer. Click **Yes** to continue.

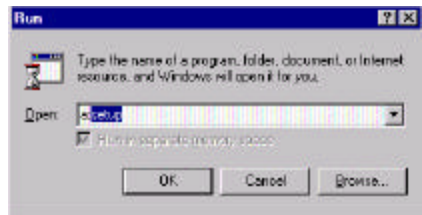
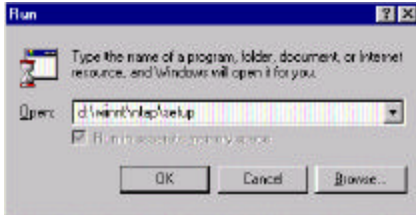


Installing the Application Programs

*Before you start, make sure the type of your Application Program Interface. The Application Program Interface (API) is used as the interface between the hardware (ISDN TA PC Card) and the application programs. Up to date, the available Application Program Interface for Windows NT are **NDIS** and **CAPI**. Make sure the type of API matching your system. Move to the specific section titled the appropriate API for your need for installation.*

NDIS Mode

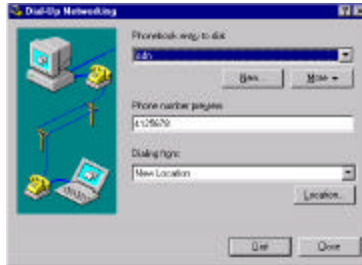
1. Insert the application software disk or compact disc into your computer.
2. Go to the **Start** menu. Click **Run**.
3. If you are using compact disc to install the application software, type in the CD-ROM drive letter followed by **winnt\ntap\setup**. Or if you are using disk, type in **a:setup**. The **Configuration Utility** installation program will proceed automatically.



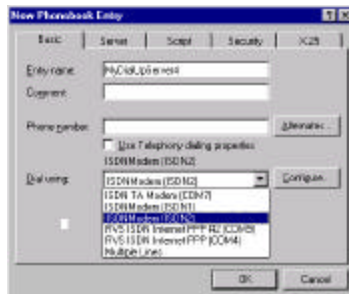
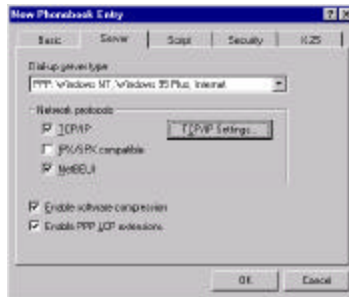
4. Follow the on-screen instruction to continue. When finished. Windows will prompt you to restart your computer. Click **Finish** to restart your computer.
5. For Windows NT does not support hot swap, remember to insert the PC card in the PCMCIA socket of your computer while you are restarting your computer.

Internet Access

1. Go to **My Computer**. Select **Dial-Up Networking**.
2. Click **New...** to name the phonebook. Enter in the name properly.



3. Shift to the next tab to enter in the required data as illustrated below.



4. When finished, click **OK**. Select **Dial** to continue.
5. When the **Connect to ISDN** dialogue appears, you are on the Internet.

CAPI Mode

Installing RVS-COM Lite

Make sure the RVS-COM Lite “**CommCenter**” has been well installed and executed before start any application in CAPI mode. For details, refer to the previous section with the same title in the Windows 95/98 environment.

Applications

All the applications applied in Windows NT can be executed as in Windows 95/98. For better illustrations, refer to the previous sections with the same titles.

Making PPP connections

1. Run RVS-COM “**CommCenter**”.
2. Enter “**Control Panel**” → “**Modems**”. Click “**Add**” button.
3. Select “**Don't detect my modem; I will select it from a list**”. Click “**Next**”.
4. Select “**RVS Datentechnik**” – “**RVS ISDN Internet PPP**”. Click “**Next**”.
5. Select the COM port that is identical to the COM port assignment in “**Windows Port**”. Click “**Next**”. Click “**Finish**”.
6. Now you will see “**RVS ISDN Internet PPP**” in the modem properties list. Click “**Close**”.
7. Click “**Yes**”, when “**Modem Setup**” window appears.
8. Click “**Add**” in “**Remote Access Setup**” dialog window.
9. Select “**COM# RVS ISDN Internet PPP**” in RAS device list. Click “**OK**”.
10. Click “**Continue**”. Then, restart Windows NT.
11. Run RVS-COM “**CommCenter**”.
12. Double-click “**Dial-Up Networking**” in “**My Computer**”.
13. Go to **Dial-up Networking**, click “**New**” command button. If this is your first connection, just skip it. Name the new connection appropriately. For example, “**RVS_PPP**”. Click “**Next**”.

14. Select **“Send my plain text password...”** (recommended). Click **“Next”**.
15. Select **“RVS ISDN Internet PPP (COM#)”**. Click **“Next”**.
16. Give the phone number that you want to dial to. Click **“Next”**.
17. Click **“Finish”**.
18. Click **“Dial”** to make connection immediately. Or click **“Close”** to wait for later PPP applications.

Making Multilink PPP connections

1. Perform the above steps as illustrated in the previous section to complete the PPP connection.
2. Run RVS-COM **“CommCenter”**. If only one COM port is assigned, you have to add another ISDN port.
3. Click the **“Add”** button. Select **“An ISDN channel on your local PC”**. Click **“Next”**. Assign a free COM port for the second ISDN port. Click **“Next”**. Click **“Finish”**.
4. Make sure the second ISDN port **“ISDN2”** is activated (the check box is selected). Click **“OK”**.
5. Enter **“Control Panel”** → **“Modems”**. Click **“Add”** button.
6. Select **“Don’t detect my modem; I will select it from a list”**. Click **“Next”**.
7. Select **“RVS Datentechnik”** – **“RVS ISDN Internet PPP”**. Click **“Next”**.
8. Select the COM port that you just assigned at step (2). Click **“Next”**.
9. Click **“Finish”**.
10. Now you will see **“RVS ISDN Internet PPP #2”** in the modem properties listed in **“Control Panel”** → **“Modems”**. Click **“Close”**.
11. Click **“Yes”**, when **“Modem Setup”** window appears.
12. Click **“Add”** in **“Remote Access Setup”** dialog box.
13. Select **“COM# RVS ISDN Internet PPP #2”** in RAS device list. Click **“OK”**.
14. Click **“Continue”**. Then, re-start Windows NT.

15. Run RVS-COM “**CommCenter**”.
16. Double click “**Dial-Up Networking**” in “**My Computer**”.
17. If you are not new of using Dial-up Networking, click “**New**” command button. If this is your first connection, just skip it. Give the new connection name. For example, “**RVS_MP**”. Click “**Next**”.
18. Select “**Send my plain text password...**” (recommended). Click “**Next**”.
19. Select “**RVS ISDN Internet PPP (COM#)**”. Click “**Next**”.
20. Give the phone number that you want to dial to. Click “**Next**”.
21. Click “**Finish**”.
22. Click “**More**” command button.
23. Select “**Edit entry and modem properties**”. Open “**Basic**” tab. Select “**Multiple Lines**” in “**Dial using**” box.
24. Click “**Configure...**” command button. Enable (tick) “**RVS ISDN**”
25. **Internet PPP #2...**).
26. Click “**Phone numbers...**”. Give the 2nd ISDN phone number for your Multilink PPP connections, if any. If your ISP just support single phone number for Multilink PPP connections, you must enter the number here. Click “**Add**”. Click “**OK**” to complete the configuration.

Making “Modem over ISDN” Connections (Using CAPI software)

Using RVS-COM Softmodem

1. Run RVS-COM “**CommCenter**”.
2. Enter “**Softmodem**” tab. Enable “**Use Softmodem**”. Click “**Apply**” and “**OK**”.
3. Open “**ISDN**” tab. Select appropriate ISDN voice encoding scheme for your location. Generally “**A-law**” is for European countries, and “**Mu-law**” for North America.
4. Run “**Config**” in “**Configuration Utility**”.
5. Open “**Switch type**”. Choose appropriate “**Voice Encoding**” scheme. The setting should be consistent with RVS-COM in step (3).

Now you are ready to use the RVS-COM's Softmodem function. Refer to the RVS-COM on-line documentation for application details.

Making G3 Fax over ISDN

1. Start **CommCenter**.
2. Open the **SoftwareFax** tab. Select "**Use SoftwareFax to receive fax**" to receive a fax. Or select "**Use SoftwareFax to send fax**" to send a fax.
3. Open "ISDN" tab. Select appropriate ISDN voice encoding scheme for your location. Generally, you should select "**A-law**" for European countries, "**Mu-law**" for North America
4. Open the **Service** tab. Select **Accept calls**. Select **Fax**. Click OK.

Sending a fax

1. Start **Create New Fax** in the RVS-COM group programs. Click **OK**.
2. Follow the on-screen instruction to enter the necessary information. When all set, RVS will send out the fax for you automatically.

Receiving a fax

3. Wait for incoming fax calls.
4. You can go to **Inbox** to read the incoming fax.

ISDN AT COMMANDS

Besides using **configuration utility** as described in the previous section, you can alternatively use **ISDN AT command** to configure and use the Intelligent ISDN TA PC Card.

More specifically, AT commands are usually issued to the ISDN TA PC Card to control the TA's operation and configuration. AT commands can only be entered while the TA is in command mode. The format for entering AT commands is:

ATXn ↵

where **X** is the AT command, and **n** is the specific value for that command.

↵ means pressing the ENTER button.

Any command issued is acknowledged with a response in either text or numeric values. If the commands and command-values are correct, the **OK** message will appear; otherwise **ERROR** message will prompt.

This chapter describes how to use the AT commands for the users who need special parameters in order to meet their applications. Refer to the appendix for the detailed ISDN AT command definition.

Using ISDN AT Commands

As mentioned above, you can use ISDN TA PC card through AT besides except through communication software carefully every time, because they can cause your software to loose its ability to control the modem. When you do find any AT command causes ISDN TA mau-function, turn the computer off and then on. That will reset most of the AT command settings to the factory defaults.

In order to use an AT command, you need to have done the following:

1. Run your communication software.
2. Configure the software for the appropriate COM port and IRQ setting if necessary.
3. Enter terminal mode (aka command mode, local mode, or directmode.). This is usually the mode that communications software starts up. Then, type the AT command for you needs, then press **Enter** key. For example,

AT!C0=0<Enter> Set the ISDN TA to connect to AT&T

5ESS switch

AT!Z=9<Enter> Select async to sync PPP Conversion

AT&N0=0<Enter> Select Single-Link PPP mode

Mostly the AT commands can also be entered in the same command line. For example,

AT!C0=0!Z=9&N0=0<Enter>

As shown above, it is not necessary to put spaces between the commands (there is no space between **AT**, **!C0=0**, **!Z=9**, and **&N0=0**).

The ISDN TA usually returns an response at the next line if it understands the command. The response is usually **OK** or **ERROR** unless the AT command has other extended messages. Add **&Wn** at the end of the AT command string to save the changes to ISDN TA's memory (refer to **AT&Wn** commands for details), otherwise the changes will get lost when you restart or shut down the computer. Type **AT&F&Wn<Enter>** if you get lost in the AT command and want to go back to the factory default settings.

Exception:

Do not proceed the following commands with an **AT** prefix or end it by pressing **Enter**.

+++ Escape sequence

The escape sequence allows the modem to exit data mode and enter on-line command mode. While in on-line command mode, you may communicate directly to your modem using AT commands. Once you are finished, you may return to data mode using the ATO command.

APPENDIX: ISDN AT COMMAND

Command	Description
ATA	Go off-hook (answer the incoming call immediately)
ATB?	Display V.110 user rate for out-going calls
ATBn n=0	V.110 user rate: 600 bps
n=1	V.110 user rate: 1200 bps
n=2	V.110 user rate: 2400 bps
n=3	V.110 user rate: 4800 bps
n=4	V.110 user rate: 9600 bps
n=5	V.110 user rate: 19200 bps
n=6	V.110 user rate: 38400 bps
n=7	V.110 user rate: 48000 bps
n=8	V.110 user rate: 57600 bps (for Japan only)

Note : The V.110 rate is depend on the DTE speed . When HyperTerminal open , if DTE speed is 600 , 1200 , 2400 , 4800 ,9600 ,19200 ,38400 ,48000, and 57600 . Key in "ATB?" will display the matchV.110 rate, If DTE speed is not in one of the V.110 legal rate , then the "ATB?" will be set to default speed 38400 .

ATD<number>	Make ISDN data calls, e.g. ATD5551000
ATDM<number>	Make modem calls over ISDN line, e.g. ATDM5551000
ATDT<number>	Dial out the ISDN phone number, e.g. ATDT5551000
ATDV<number>	Make ISDN Phone voice calls, e.g. ATDV5551000
ATDSn	Dial out the pre-stored phone number (n=0, 1, 2.). Refer to AT&Zn=<number> command for phone number storage
ATDL	Re-dial the last ISDN phone number
ATEn n=0	Echo in command mode is disabled
n=1	Echo in command mode is enabled

ATH	Hang up the ISDN data calls
ATH1	Disconnect ISDN Phone voice calls
ATH3	Disconnect ISDN data calls and ISDN Phone voice calls
ATI3	View driver version
ATO	Return to connection (on-line) mode
AT!C0=n	ISDN D-channel protocol and switches selection
n=00	AT&T 5ESS Custom
n=01	Northern Telecom DMS-100 Custom
n=02	ETSI Europe ISDN
n=05	U.S. National ISDN-1 (NI-1), factory default
n=06	INS 64 , for Japan
AT!C6=n	Set Service Profile ID 0 (SPID 0), where " n" is the SPID number up to 20 characters. Example, ISDN phone number: 5551000 SPID 0: 0555100001
AT!C2=n	Set Service Profile ID 1 (SPID 1), where " n" is the SPID number up to 20 characters. Example, ISDN phone number: 5553000 SPID 1: 0555300001
AT!N0=n	Set ISDN Directory Number 0 (DN 0), where "n" is the ISDN phone number. Example, DN 0: 5551000 => n=5551000
AT!N1=n	Set ISDN Directory Number 1 (DN 1), where "n" is the ISDN phone number. Example, DN 1: 5553000 => n=5553000
AT!Q=n n=0	Set B-channel speed to 64 K
n=4	Set B-channel speed to 56 K
AT!V=n n=0	The incoming voice-grade calls are answered by ISDN Phone
n=1	The incoming voice-grade calls are answered by modem (Modem over ISDN)
n=2	Enable audio speech

n=3	Enable 3.1K Hz audio
AT!Z=n	B-channel protocol selection
n=05	V.120
n=06	V.110
n=09	Async to Sync PPP conversion

Note: The "!" commands are used to change certain fundamental configuration parameters which are changed very infrequently - often, only once at installation. Using these "!" commands during normal operation with the telephone line connected to the Terminal Adapter (TA) can cause unpredictable results. It is best to issue the "!" commands when the TA is not connected to the ISDN network to avoid confusion between the TA and ISDN network. The recommended procedure for using the "!" commands is as follows:(1) Disconnect the ISDN phone line from the TA. (2) Issue the "!" commands to set the correct value for the "!" command related parameters.(3) Issue the AT&Wn" command to store the parameters changed during step (2) in the user profile ".(4) Reconnect the ISDN phone line.(5) Reset or reboot the ISDN sub-system with the updated configuration parameters.