

ISDN T/A 128

Passive ISDN Adapter

ISA / PCI

Copyright Statement

Copyright ©1998 PLANET Technology Corporation.

No part of this publication may be reproduced in any form or by any means or used to make any derivative such as translation, transformation, or adaptation without permission from PLANET Technology Corporation.

Trademarks

This guide and the accompanying product are each provided "as is," without warranty as to their performance, merchantability or fitness for any particular purpose. PLANET Technical Corporation reserve the right to revise this publication and to make changes to its contents at any time, without obligation to notify any person or entity of such revisions or changes.

Reversion

This guide is used for PLANET ISDN T/A 128 card series:

Model: IA128-STD, IA128-STDV,

IA128P-STD, IA128P-STDV

IA128P-UD, IA128P-UDV

IA128P-UD, IA128P-UDV

Reversion: 2.0 (August, 1998)

Part No.: EMIA128-2

Table of Contents

CHAPTER 1 INTRODUCTION	1
ABOUT ISDN T/A 128.....	1
THE FEATURES OF ISDN T/A 128.....	1
WHY ISDN?	2
WHY HIGH SPEED ANALOG MODEMS CAN NOT COMPETE WITH ISDN DIGITAL CONNECTIONS?	3
CHAPTER 2 BEFORE INSTALLATION	5
PACKAGE CHECKLIST.....	5
SUGGESTED SYSTEM ENVIRONMENT.....	5
ISDN BRI LINE	5
<i>What is SPID?</i>	5
NT1 CONNECTION	6
INTERNET ACCESS ACCOUNT.....	6
ENVIRONMENT SETUP	6
CHAPTER 3 INSTALLATION	9
INSTALLATION FOR WINDOWS 3.1 ENVIRONMENT.....	9
<i>Installing and Configuring the Drivers</i>	9
<i>Application Environment Setup</i>	11
<i>Removing ISDN T/A for Windows 3.1</i>	12
INSTALLATION FOR WINDOWS 95 ENVIRONMENT.....	12
<i>Installing and Configuring the Drivers</i>	12
<i>Application Environment Setup</i>	14
<i>Removing ISDN T/A 128 for Windows 95</i>	28
INSTALLATION FOR WINDOWS 98 ENVIRONMENT.....	28

INSTALLATION FOR WINDOWS NT ENVIRONMENT.....	29
<i>Installing and Configuring the Drivers.....</i>	29
<i>Configuring an Access Account over ISDN.....</i>	35
<i>Accessing the Outside World Using Dial-Up Networking.....</i>	37
<i>Reconfigure the ISDN Settings.....</i>	38
<i>Removing ISDN T/A 128 for Windows NT.....</i>	38
CHAPTER 4 COMPORT EMULATOR.....	39
CHAPTER 5 TROUBLESHOOTING.....	43
ISDN T/A 128 LINETEST.....	43
<i>LINETEST Error Messages (CAPI 2.0).....</i>	43
<i>ISDN T/A 128 ISDN LOG.....</i>	44
<i>Error Messages.....</i>	45
APPENDIX A SPECIFICATIONS.....	47
APPENDIX B EC-TYPE EXAMINATION AND FCC REGULATION	48
APPENDIX C APPLICATIONS.....	50
TRUMPET SETUP THROUGH COM PORT EMULATION.....	50
MICROSOFT HYPERTERMINAL.....	52
RVS-COM.....	53
PC ANYWHERE.....	54
WINGATE.....	54
COMPUSERVE CONNECTION.....	54
APPENDIX D VIRTUAL MODEMS.....	55

Chapter 1 Introduction

The proliferation of PCs and LANs with bandwidth intensive application, has generated a powerful demand for high-speed connections. The worldwide standardization of ISDN, combined in many countries with its growing availability and falling cost, make it a natural choice for enhancing data throughput.

ISDN T/A 128 provide high-performance solutions for **Internet access, file transfer, remote access service (RAS)**, and running **existing modem applications** through the ISDN network.

About ISDN T/A 128

There are two ISDN interface options of ISDN T/A 128 adapter, ST and U interface and two bus interface options, -PCI / ISA. If you purchased the ST interface adapter (IA128-ST or IA128P-ST), you need an ISDN NT1 devices connect to the ISDN switch. If you purchased the U interface adapter (IA128-U or IA128P-U), it can directly connect to the ISDN switch.

Each interface card has two models. For example, IA128-STD and IA128-STDV for ST interface, IA128-UD and IA128-UDV for U interface. All of the features of "D" and "DV" models are the same, except "DV" model provide an extra standard a/b (POTS) port.

The following sections are using **IA128** or **ISDN T/A 128** to representation all the PLANET ISDN Internal cards.

All of the current analog devices, including telephone set, G3 fax, answering machine, modem, and PBX trunk line can be connected to the a/b port (RJ-11 jack) in "DV" model. The data transmission rate of the "DV" model can up to 64 Kbps while analog communication on-line, or up to 128 Kbps through Multilink PPP connection.

The Features of ISDN T/A 128

You can use the ISDN T/A 128 for Internet access, file transfer, remote access to the computer network, and running existing modem applications through the ISDN network.

The Specification & featur of ISDN T/A 128

- ◆ PnP with 16 bits address decoding. Supporting of Windows 3.1, 95

(OSR-2), 98 and NT.

- ◆ Multilink PPP connection. Supporting of Microsoft's ISDN Accelerator Pack.
- ◆ D Channel protocols. Including Euro-ISDN (DSS1 and 1TR6), US standards of NI-1 & NI-2, AT&T 5ESS, Nortel DMS-100, and Japan INS-64.
- ◆ Full B Channel protocols. Including V.110, V.120, HDLC, X.75 (Transparent, T70NL, EuroFT), PPP, MLP, async. to sync. PPP conversion and MLP+BOD.
- ◆ MLP+BOD. Customers can use the Dialup Networking and select our MLP or MLP+BOD virtual modem to get 128K connection. The BOD is based on the data traffic, voice call ...to drop/establish another B channel for saving time and money.
- ◆ Supporting the application interfaces including WinISDN, CAPI 2.0, Windows Comm. API with AT command sets, and NDISWAN Miniport.
- ◆ Supporting the popular modem application with ISDN throughput and digital transmission quality, eg. PC Anywhere.
- ◆ Supporting of other applications, eg. RVS-COM, WinGate, cfof, CuSeeMe, Microsoft's HyperTerminal.
- ◆ Comm. server capability in the Windows NT Server. It could be used as Internet comm. server in the ISP, RAS applications for SOHO market, and connection into Internet shared by all of the LAN users!
- ◆ LINETEST feature tests the ISDN line conditions for trouble shooting.
- ◆ LOG feature provides the embedded protocol analyzer to decode D-channel signaling information and raw data on two B channels.
- ◆ Supporting IDSL technology solution without need ISDN switch inter-connection.
- ◆ Supporting multi-language of MS-Windows drivers and quick installation guide.
- ◆ Supporting the multi-processors of Windows NT platform.
- ◆ All of the ISDN T/A 128 passive cards with the same driver, no matter ISA or PCI bus, or current version or new version. The latest ISDN T/A 128 drivers from web-site download can backward compatible with ISDN T/A 128 passive cards.

Why ISDN?

The ISDN (Integrated Services Digital Network) is the standard for carrying both data and voice simultaneously. ISDN BRI (Basic Rate Interface) line provides two B-Channels for voice or data transmission, and each B-Channel can provide data transmission of up to 64 Kbps. The ISDN network uses the same transmission lines as the existing analog telephone network, but using a digital signal and higher bandwidth between the central office (phone company) and the customer. Aside from four times faster than a standard 28.8 Kbps modem, ISDN also provides an extremely reliable and stable digital connection.

The ISDN network can set up a connection in about 3 seconds. This is much quicker than the PSTN network. This feature alone can result in great time savings in the longer term.

Why High Speed Analog Modems Can Not Compete With ISDN Digital Connections?

"The high speed modem can run at 28.8 Kbps and will move data at ISDN-type speeds when you consider data compression". This assumes a noise-free telephone line and that the data is easily compressed. Unfortunately, many image files cannot be compressed easily, and many telephone lines are far from ideal. ISDN always operates at its rated speed. Of course, ISDN cards can also use data compression technology to multiply its raw data transmission speed.

Telephone monopolies allowing, ISDN will inevitably replace the existing analog telephone network. The conversion is being driven by applications such as telecommuting, home-working, remote LAN access, video conferencing and access to the Internet. Today, ISDN is available almost everywhere so all users can should be able to get the benefits from ISDN now.

Chapter 2 Before Installation

Before installation ISDN T/A 128 adapter, you need to check the package contents, apply an ISDN BRI line, prepare a NT1 device (for IA128-ST adapter only), and get an Internet access account (if Internet access required).

After you prepared the above items, you can start your environment setup before installation ISDN T/A 128 adapter. If you purchased the adapter is "DV" model, you can connect your analog device to the RJ-11 jack (in the UK an adapter is supplied).

Package Checklist

In your ISDN T/A 128 package, you will find the following contents.

- ◆ ISDN T/A 128 adapter 1 piece.
- ◆ Installation Disk(s) for Windows 3.1, 95, and NT.
- ◆ RJ-45 cable, 6 feet, for ISDN connection.
- ◆ RJ-11 cable for a/b port connection (DV model only).
- ◆ This Installation Guide for ISDN T/A 128 adapter.

Suggested System Environment

Hardware

IBM PC (or compatible computer) with 8 MB or more of RAM, 386 CPU or later capable of running Microsoft Windows.

Software

Microsoft Windows environment.

ISDN BRI Line

Before running the ISDN T/A 128 adapter, you need to get an ISDN BRI (Basic Rate Interface) line from your local telephone company. Sometimes, your ISP may, upon your request, order an ISDN BRI line for you when you apply an ISDN Internet access account.

You should get the subscriber information from your ISDN telephone company, who may inform you about your ISDN central switch type and SPID (Service Profile Identifier) number, when you are in the US country.

What is SPID?

SPID stands for Service Profile ID. SPIDs are a series of numbers that informs

the central office switch which services and features to provide to an ISDN device. The generic SPID format comprises 14 digits. The first 10 digits are the main telephone number on the terminal. The last 4 digits are dependent on the number of terminals on the interface and the services they support.

Note: The SPID is applicable to the US country only.

NT1 Connection

The ISDN U-loop is terminated by NT1 device at the customer premises. The connection between the NT1 and Terminal Adapter (TA) is called point "T". The NT1 drives a 4-conductor S/T-bus which may be expanded to 8 conductors to provide for emergency power. If your ISDN product with a S/T outlet interface, you need an NT1 device connect to the ISDN switch. IA128-ST adapter needs an NT1 device to connect to the ISDN switch, but IA128-U adapter does not require NT1 device. In the UK, and in many European countries, an NT1 device is supplied by your telephone company. Therefore the -ST adapters are required for these countries.

Internet Access Account

If you want to use ISDN T/A 128 adapter to connect to the Internet, you must get an Internet access account from an ISP (Internet Service Provider) in your country. You must also confirm with your ISP that they support ISDN access (either single channel 64K or 128K MLP).

Environment Setup

All ISDN T/A 128 are truly Plug and Play (PnP) compatible. Even if the BIOS or computer main board does not provide PnP feature, the ISDN T/A 128 device driver still can automatically configure ISDN card with proper I/O addresses and IRQ number.

1. Terminator setup of ISDN T/A 128 -- IA128-ST, IA128P-ST adapter

Note: Please jump to the next section (2.) if you are the user of IA128-U adapter.

ISDN S/T interface can support up to 8 ISDN terminals and through NT1 device connecting to the ISDN network. One and only one ISDN S/T device should have the terminator enabled. Normally the ISDN terminal which is farthest from NT1 should have the terminator enabled.

ISDN T/A 128, model IA128-ST adapter provides two jumpers of JP1 and JP2 for the terminators setup. The default setting of IA128-ST adapter with terminator enabled. If there are other ISDN devices connected to the NT1

with IA128-ST adapter, and you do not require the IA128-ST adapter as terminator, then please remove the JP1 and JP2 (open circuit).

2. Insert the ISDN T/A 128 adapter

- a. Turn off your computer power and remove the lid.
- b. Insert the ISDN T/A 128 adapter into a spare PC ISA slot and secure it.
- c. Replace the lid.

3. Analog device connection (DV model only)

"DV" model of ISDN T/A 128 (IA128-STDV and IA128-UDV) provide a POTS interface with RJ-11 jack to connect with current analog devices. Users can connect analog telephones, G3 fax, modem, or answering machine with the RJ-11 connector cable into the RJ-11 jack of the ISDN T/A adapter. In the UK an adapter is supplied to convert from the UK type 103 plug to the US RJ11 plug. The REN (Ringer Equivalence Number) drive capability or parallel ring number is 3, so you can connect up to 3 analog devices, assuming each device has a REN of 1.

4. ISDN connection

Connect the IA128-ST adapter and NT1 with RJ-45 cable connector, and insert the ISDN BRI line into the correct NT1 socket.

OR

Directly Insert the ISDN BRI line with the RJ-45 connector cable into the RJ-45 jack on the IA128-U adapter. Please kindly be informed that even RJ-45 connector has 8 pins and RJ-11 has 4 or 6 pins, but you can still plug cable from wall jack with RJ-11 connector into RJ-45 jack on the IA128-U adapter. The IA128-U adapter still work correctly.

Now, your ISDN PC environment is ready for installation. The IA128-ST adapter attaches to the ISDN T interface from NT1 and the IA128-U adapter attaches to the ISDN U interface directly with ISDN switch.

Chapter 3 Installation

After you setup your ISDN environment, now, turn on your computer power ON and start the driver installation. ISDN T/A 128 supports Microsoft Windows environments, please read the appropriate installation section for your PC system.

Installation for Windows 3.1 Environment

You can install the ISDN T/A 128 adapter with ISDN connection either through COM port emulation, or the standard WinISDN interface, or standard the CAPI 2.0 interface in Windows 3.1. Please read the following steps.

Installing and Configuring the Drivers

1. Insert the ISDN T/A 128K installation diskette into the disk drive.
2. Select the "File" menu from the Program Manager, then choose the "Run" item to execute the "Setup.exe" file on the disk drive. The ISDN T/A 128 installation software will automatically process the necessary setup steps.
3. ISDN Configuration. After step 2. completes, setup will automatically pop-up the ISDN Configuration dialog box (see figure 3-1). Please fill the necessary information in the text boxes of ISDN Configuration dialog box.

ISDN Switch Type. Choose the country name for your location, or select an appropriate ISDN switch type in your country (especially for US customers).

Codec. Countries follow the European telecommunication standard may choose A-Law. Countries follow the US telecommunication standard may choose u-law.

Standby Time. This is a timer which wait any keypads input from analog device before sending message out. Please leave it as the default value.

MSN (POTS). MSN (POTS) parameter is used for ISDN switches supporting MSN (Multiple Subscriber Number) service. MSN service is supported by some European telephone companies. If you enter the number here then the called telephone number of incoming call will be required to match the MSN (POTS) value, otherwise the analog device connect to the POTS (a/b) port will not be enabled.

SPID-1 and SPID-2. SPID parameters only need to be setup for some US customers, please check with your telephone company if it is necessary.

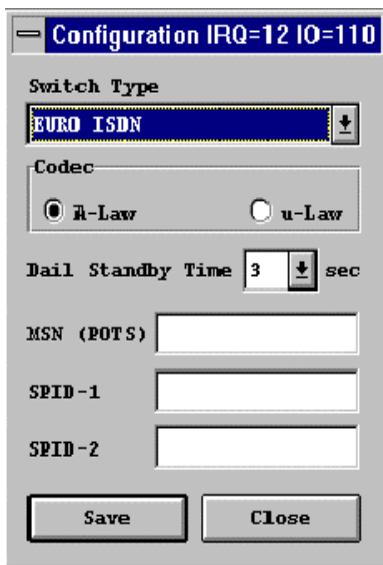


Figure 3-1 ISDN configuration

4. **Now you have finished installation of ISDN T/A 128 adapter, please restart windows.** The ISDN T/A 128 driver will be automatically loaded after started the Windows 3.1, and the ISDN T/A 128 group folder appears as figure 3-2. The ISDN LOG application is used to record the handshaking and data transfer process during the communication. It can be used for debugging purpose so it is often useful to have the log running while first starting to use the ISDN system. The Line Diagnostic is used for on-line channels test between ISDN switch and subscriber site, and to get the ISDN line status. Please refer to chapter 5 for detailed information.

Note: You can re-configure the parameters of step 3 by executing ISDN Configurer in the ISDN T/A 128 group folder. The Configuration dialog box also displays IO address and IRQ value in the message bar.

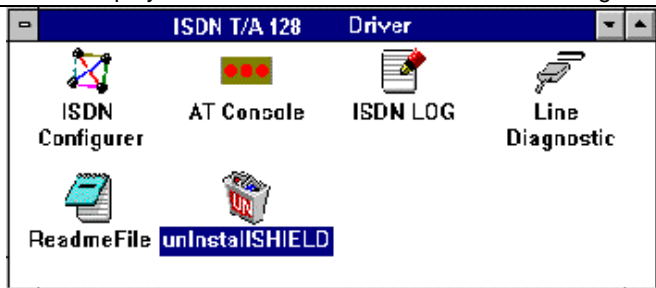


Figure 3-2 ISDN group folder

Application Environment Setup

Under Windows 3.x applications can use the ISDN T/A 128 device using either COM port emulation, the standard WinISDN interface, or the CAPI 2.0 interface.

1. COM Port Emulation. The ISDN T/A 128 driver provides AT Command Set interpreter to emulate modem's actions and transfer/receive data through the ISDN network. For current modem users, you need set up your application software to the appropriate COM ports (COM3 or COM4) to communicate with ISDN T/A 128 adapter. AT Console program (see figure 3-2) can redirect the AT commands and data through COM3 or COM4 to the ISDN T/A 128 driver to process them.

If you want to setup Internet environment through COM port emulation then **TRUMPET** is the popular Internet shareware and includes the TCP/IP and PPP protocols with Winsock interface. Most Windows 3.1 Internet modem systems use TRUMPET connect to the Internet and run Internet applications such as Netscape Navigator. The TRUMPET user should modify the Network Configuration and Script files to access the Internet through ISDN T/A 128. See the Appendix C, the example of modification of TRUMPET setup.

- ◆ When entering the Windows 3.1 system, you must run the AT Console to enable the COM port emulation capability.
- ◆ Multilink PPP is not supported at the AT-Console. You may get Multilink PPP connection through the applications which include TCP/IP & Multilink PPP stack with WinISDN or CAPI interface.

2. WinISDN Interface. The ISDN T/A 128 driver can transmit/receive data with applications through the standard WinISDN interface. The following TCP/IP stacks support the WinISDN interface.

- ◆ NetManage's Chameleon
- ◆ FTP's Explore
- ◆ Frontier's SuperHighway Access

Please refer to their respective documents to setup the dial-up environment for WAN and LAN. We recommend **NetManage's Internet Chameleon** (version 4.5 or later) for compatibility using both PPP and Multilink PPP.

3. CAPI Interface. Applications can also access the ISDN T/A card for up to 128K data transmission and receiving through the standard CAPI 2.0 (or later) interface.

Removing ISDN T/A for Windows 3.1

If you want to remove ISDN T/A 128K driver from your Windows 3.1, please click the unInstallSHIELD icon (see figure 3-2).

Installation for Windows 95 Environment

This section includes the installation of ISDN T/A 128 adapter and application environment setup. The supported application interfaces including WinISDN, CAPI 2.0, NDISWAN Miniport adapter, and virtual modem in Windows 95.

Please read the following Windows 95 installation steps and setup procedures of the NDISWAN Miniport adapters and virtual modems.

Installing and Configuring the Drivers

1. After you have inserted the IA128 card, switch computer power on and allow Win95 to startup. When the Windows 95 system starts it should auto-detect a new PnP card and request you to install its driver. Please insert ISDN 128K driver diskette/CD into appropriate disk drive, run the "ISDN100.INF" file from the installation diskette, then Windows 95 system will automatically process the necessary installation steps.
2. Please refer figure 3-3 for ISDN Configuration dialog box. In Windows 95 system, you can **set up (or change)** the ISDN configuration of Switch Type, values of MSN and SPID through the following procedures. Start -> Settings -> Control panel -> System -> Device Manager -> ISDN Card -> ISDN PC Adapter, Properties -> Settings.

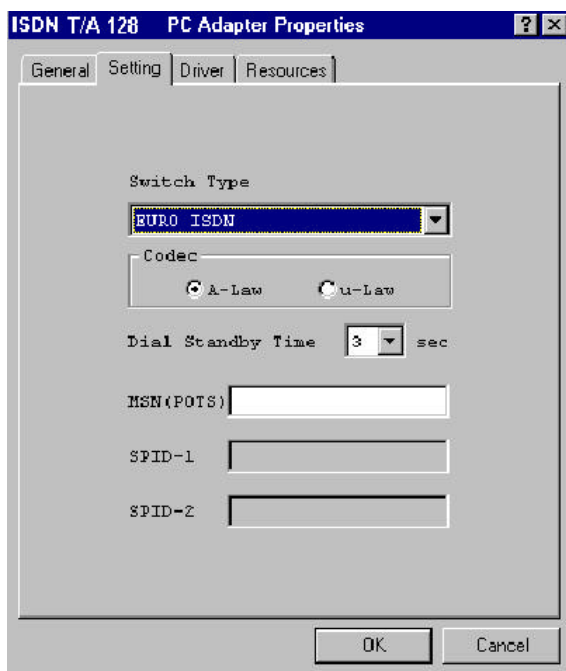


Fig. 3-3 ISDN T/A 128 Adapter configuration

This feature of ISDN configuration in Windows 95 is similar with the installation in Windows 3.1 environment as figure 3-1. The MSN (POTS) value is only relevant to the DV model and determines which telephone number to associate with the POTS interface e.g. if the number 341317 was entered then a normal telephone attached to the POTS interface would ring on a call coming in to the number 341317. **If you want your analog device always ringing when receiving an incoming call, please keep this field blank.** For the UK and most European countries select the EURO ISDN switch type with A-law Codec.

Note: If you want your analog device always ringing when receiving an incoming call, please keep this field blank.

3. After configuring the switch type Win95 will need to restart. After restart the Windows, if you choose the "DV" model then you can connect a standard analog telephone set into RJ-11 jack and should be able to hear the dial tone from the telephone handset.
4. If you already installed the ISDN Accelerator Pack 1.1 (**MSISDN11.EXE**) in the Windows, then directly jump to the application environment setup section.

To update the Dial-Up Networking to support 2B channel (MLP) connection and NDISWAN Miniport interface you will need to install the Win95 MSISDN11.EXE (version 1.1 or above) upgrade pack. You can get the file from our Windows 95 installation diskette and also accessible from Microsoft web site. **Run the MSISDN11.EXE program and follow the installation instructions.**

5. Please reboot your PC for effectively ISDN Accelerator Pack features.

Application Environment Setup

After you complete the ISDN T/A driver installation, you can execute the applications based on the WinISDN and CAPI interfaces. Of course, you need installation the software before executing the applications, please see the example of Appendix C for RVS-COM (lite version) software installation. In Windows 3.1, you need to run the AT Console to enable the COM port emulation capability. Under Win95 the COM port emulation is automatically loaded at startup.

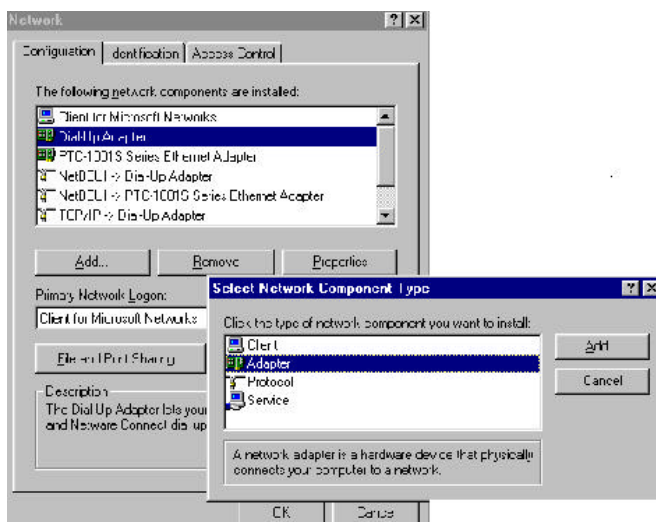
You can choose the either way of NDISWAN and virtual modem to connect to the Internet or remote LAN. If you want to execute the Internet related applications or RAS, we suggest that you setup and use the NDISWAN Miniport adapter interface. Using the NDISWAN Miniport driver is the Microsoft preferred connection method.

Note: If you want to execute the current modem applications, eg. Microsoft's HyperTerminal or PC Anywhere, you should setup and use the virtual modem interface through our COM port emulation function (we named it "virtual modem" in this user's manual).

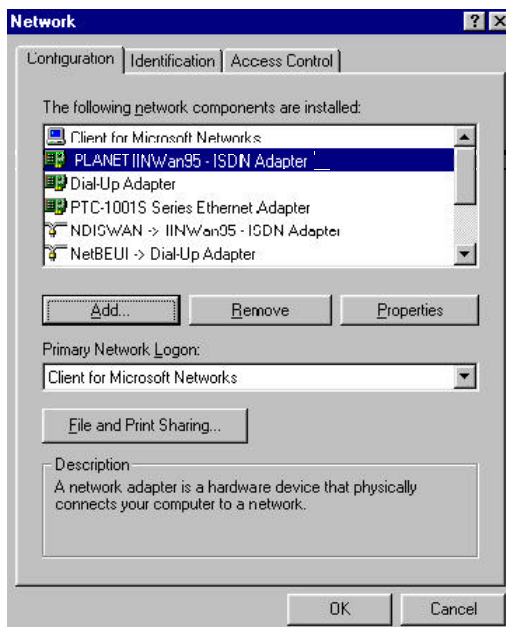
1. Connection through the NDISWAN Miniport Adapter

You must have installed the Microsoft ISDN Accelerator Pack 1.1 (MSISDN11.EXE), or later version (eg. MSDUM2.EXE) before install the NDISWAN Miniport driver.before install the NDISWAN Miniport driver.

- a. Add NDISWAN Miniport driver. Please follow the following steps to add NDISWAN Miniport driver. Start -> Settings -> Control Panel -> Network -> Add -> choose Adapter, Add -> Have Disk. Specify the directory for the iinwan95.inf file (under installation diskette of NDISWAN directory, e.g. A:\NDISWAN), then click OK.



- b. Win95 will now say that it has found one compatible device. Click OK and Windows will install the IINWan95-ISDN adapter and bind the NDISWAN protocol to this ISDN adapter as follows.



- c. Click OK, you will see an ISDN Configuration window as follows. Because you have installed our ISDN NDISWAN driver, the ISDN Accelerator Pack requests some information about your ISDN service. Click Next.



- d. Select "Automatic" for Switch protocol, click Next.

- e. Leave the Phone number and SPID fields blank. Click Next, Finish, then reboot the system to take effect the setting.
- f. Configure the Dial-Up Networking to access Internet. Now when you use the dial-up networking to create a new connection (Start -> Programs -> Accessories -> Dial-Up Networking -> Make New Connection), you can select the first device of IINWan95 in the connect using field. (such as IINWan95-Line01, in this case, the real number assigned by Windows system). See figure 3-4. Click Next.



Fig. 3-4 Dial-Up Networking Setup through NDISWAN - 1

- g. Type the phone number which you need connect to your ISP or remote LAN. Click Next, then Finish. You will see a new connection icon (PLANET NDISWAN) be added into Dial-Up Networking folder. Choose the new connection icon, click the right mouse button, choose Properties. You will see the picture as follows.

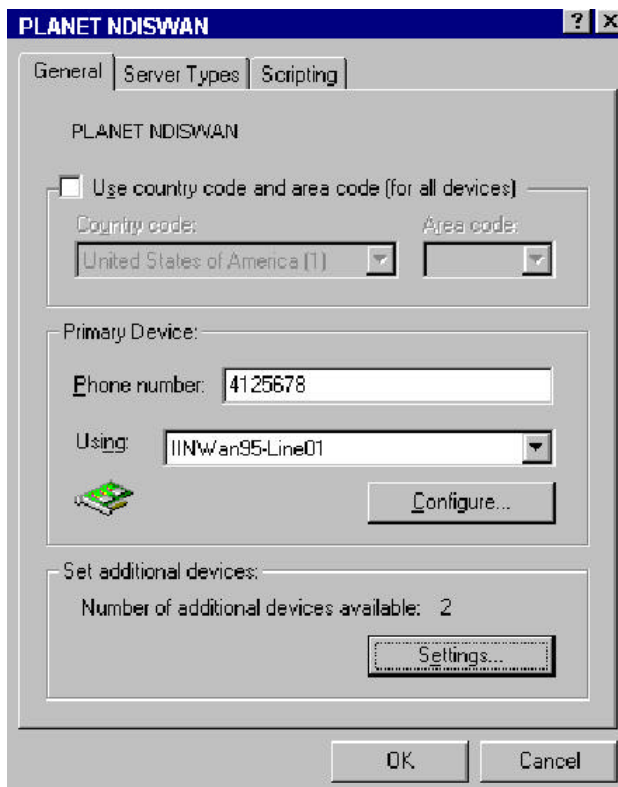


Fig. 3-5 Dial-Up Networking Setup through NDISWAN - 2

- h. If you want to use 128K MLP (check your ISP supports this feature) connection, you need choose another IINWan95 device. In figure 3-5, Settings -> Use additional device -> Add -> select the second IINWan95 device (IINWan95-Line02 in this case). Please see figure 3-6 for 128K MLP setup.

Please ensure that you choose the correct ISP settings such as Server Type and TCP/IP values. Please contact your ISP or refer figure 3-7 as an example.

You are now ready to make a connection to your ISP and access the Internet through the NDISWAN Miniport adapter!

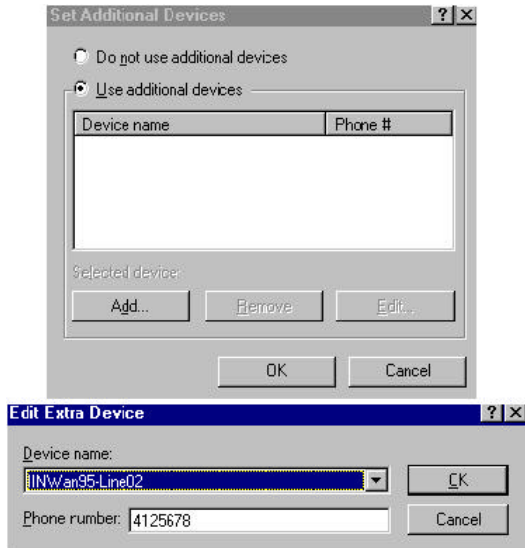


Fig. 3-6 NDISWAN 128K MLP Setup

Configure the NDISWAN adapter

There are four parameters need to be configured. Please refer the below by clicking Start -> Settings -> Control Panel -> System -> Device Manager -> Network -> Adapters -> ISDN adapter, Properties.

The MSN1 and MSN2 are used for filtering the incoming call in separated ISDN port1 (ex. IINWan95-Line01) and ISDN port2 (ex. IINWan95-Line02).

For example, if you want ISDN port 1 to receive telephone number 12345 only, you can enter 12345 into MSN1. The subaddress works like an extension number that your local ISDN switch must provide this feature also. Usually, leave these fields with blank. The Calling Party 1 and Calling Party 2 are used to indicate the ISDN switch (PTT) that this call is made from this telephone number and bills the communication cost based on this telephone number. Be noticed that MSN1 and Calling Party 1 are reserved by ISDN port1, the MSN2 and Calling Party 2 are reserved by ISDN port2.

2. Connection through the Virtual Modem

After the successful installation of the Win95 drivers, two extra of virtual ISDN COM ports will be automatically created. You need check the virtual COM port value, add the modem (virtual) connection with the ISDN COM port, and check the virtual modem parameter's value. You can refer the Chapter 4 about AT Command Sets descriptions.

- a. Check the virtual COM port value.** Please refer figure 3-8 for details of the ISDN COM port Configuration dialog box. If there is any parameter which does not match with our suggested value, then please alter it accordingly. Even you choose "115200" at the "Bits per second" field, the actual physical connection speed is "128000" when connection with 128K connection (MLP).

Our recommended values as follows.

Bits per second : **115200**
 Data bits : **8**
 Parity : **None**
 Stop bits : **1**
 Flow control : **None**
 FIFO control : **None (fill at Advanced tab)**

Select the Start -> Settings -> Control Panel -> System -> Device Manager -> Ports (COM & LPT), **ISDN ComPort1 / ISDN Comport2**, Properties -> Port Settings to check the **ISDN COM1 / ISDN COM2** port parameters.

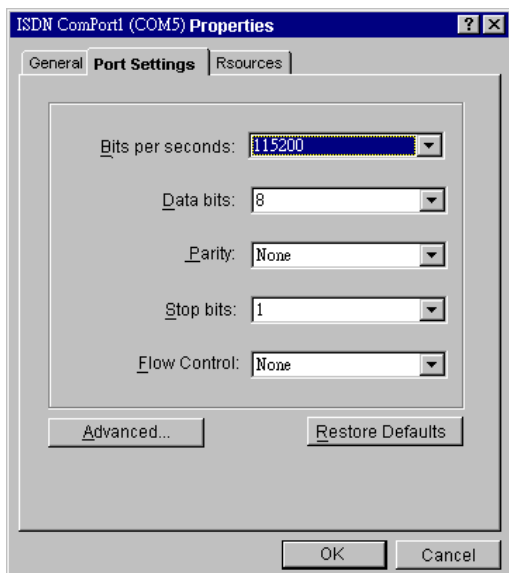
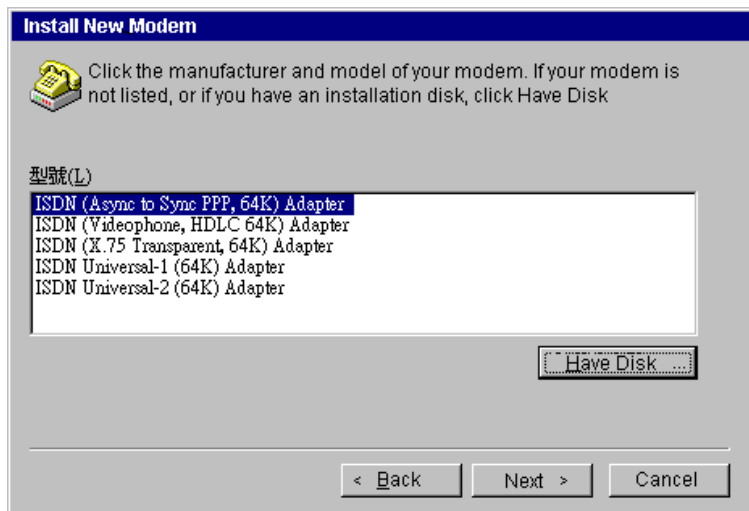


Figure 3-7 ISDN ComPort configuration

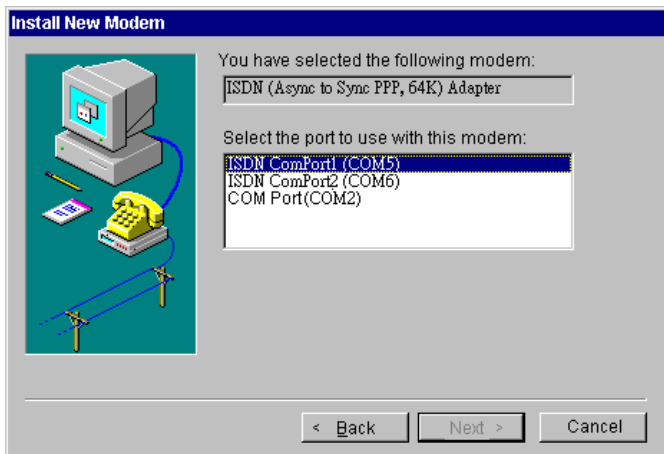
- b. Adding virtual modems connecting with two ISDN COM ports.** You can add virtual modem with ISDN T/A_ proprietary virtual modem. For installation convenience, ISDN T/A_ driver provides several proprietary

virtual modems in Windows 95. We list the following procedures as the examples to add ISDN T/A 128 virtual modems in Windows 95.

- 1) Select Start -> Settings -> Control panel -> Modems -> Add -> Select "do not detect my modem, I will select it from a list", Next
- 2) Click "Have Disk", and browse to the MODEM sub-directory on the Windows 95 installation diskette (eg. A:\MODEM). Select the **mdmasu.inf** file. Choose the appropriate modem type from the Models' text box. (see the Install New Modem dialog box below)



- 3) Click on Next, then link this modem to the ISDN Com Port.



Each modem type will automatically issue the appropriate protocol command to ISDN T/A 128 driver when you select it to make a connection.

The ISDN T/A 128 modems are used for following purposes.

- ◆ **The Async to Sync PPP modem** is used for 64K Internet Access.
- ◆ **X.75 Transparent modem** is used for BBS Access and file transfer.
- ◆ **The Universal-1 and -2 are multi-purpose modems.** With the Universal modem mode, the ISDN driver selects HDLC as default, but you can change to the appropriate protocol through our supported ATBn commands in Chapter 4. Before making a connection, you can change through Start -> Settings -> Control Panel -> Modems -> ISDN Modem, Properties -> Connection, Advanced -> Extra settings (see figure 3-10).

Note: You can use the Universal modems for 128K MLP Internet access, in which case both ISDN ports must have the Universal modem selected.

- c. Check the virtual modem parameter value.** Please check (and modify if necessary) the default modem setting pertaining to each of the two ISDN COM ports/modems. Select Start -> Settings -> Control Panel -> Modems -> ISDN modem for ISDN ComPorts (eg. In figure 3-9), Properties -> Connection, set Data bits to 8, Parity to None, and Stop bits to 1. Do not select to use FIFO buffers in Port Settings tab and do not select flow control in Advanced tab. Please refer to **figure 3-8** and **3-9** about modem configuration.

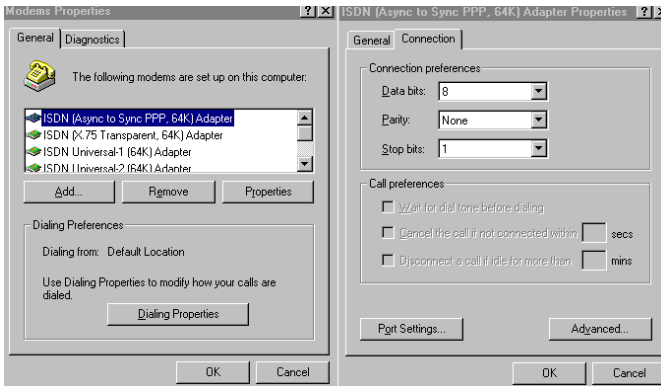


Figure 3-8 ISDN MODEM Parameter Configuration - 1

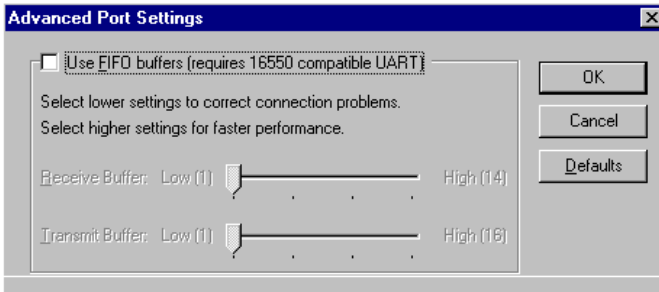
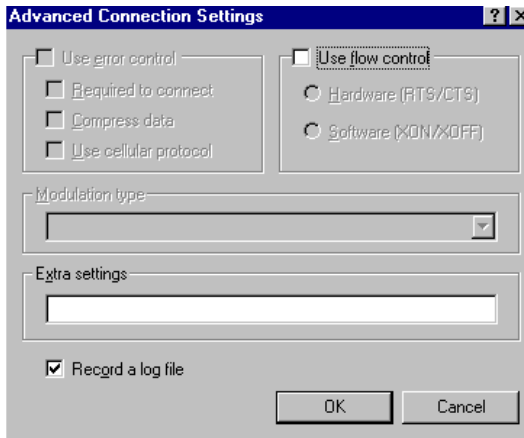


Figure 3-9 ISDN MODEM Parameter Configuration - 2

- d. Configure the Dial-Up Networking to access Internet.** Please see the examples of 64K and 128K Internet connection with Dial-Up Networking through the ISDN T/A 128 virtual modem.

64K Access

- 1) You can make a new connection from the following steps. Select Start -> Programs -> Accessories -> Dial-Up Networking -> Make New Connection. **Select the ISDN (Async to Sync PPP, 64K) Adapter modem**, click Configure tab, make sure the modem either connection to the ISDN ComPort1 or ComPort2. (see figure 3-10)
- 2) Please ensure that you choose the correct ISP settings such as Server Type and TCP/IP values. Please contact your ISP or refer figure 3-7 as an example. You can change or check the parameter's setting of Dial-Up Networking from Start -> Programs -> Accessories -> Dial-Up Networking, choose the connection icon, then click the right mouse button choose Properties. You can also input the dial-up ISDN phone number from General tab.
- 3) Now, you are ready to make a connection to your ISP and access the Internet through the our virtual modem interface (64K connection), and enjoy the related Internet applications.

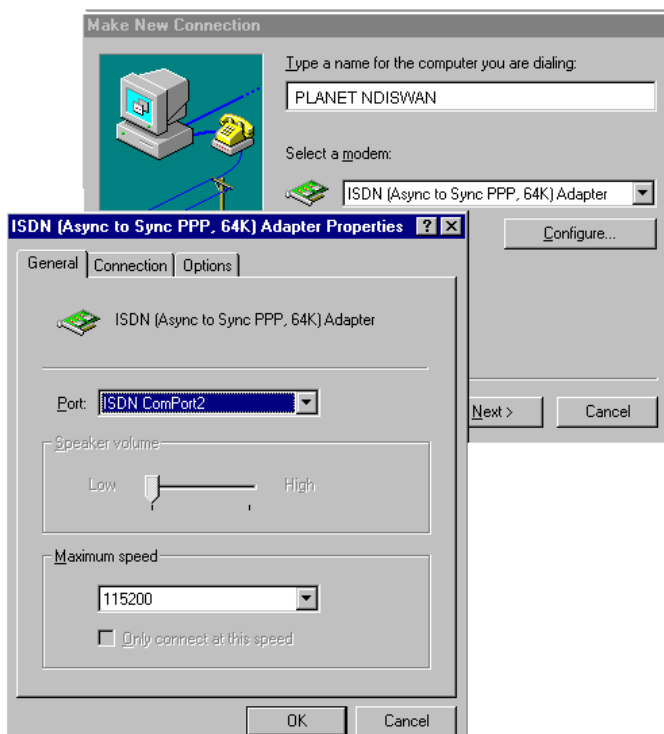


Figure 3-10 Choose ISDN (Async to Sync PPP, 64K) Adapter

128K/MLP Access

- 1) If you want to make a connection with 128Kbps, then first of all please confirm that your ISP supports 128K MLP - some don't or if they do then often they will only allow this service at extra cost. Secondly you must have installed the Microsoft's ISDN Accelerator Pack (MSISDN11.EXE). Next go to Dial-Up Networking to Make New Connection.
- 2) Make a New Connection (Start -> Programs -> Accessories -> Dial-Up Networking), **select the Universal-1 Modem related to the first ISDN COM port. Please see figure 3-11.**

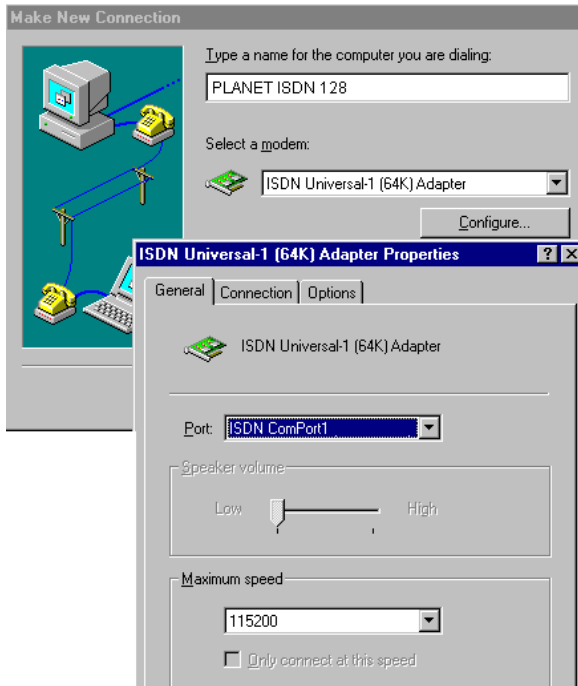
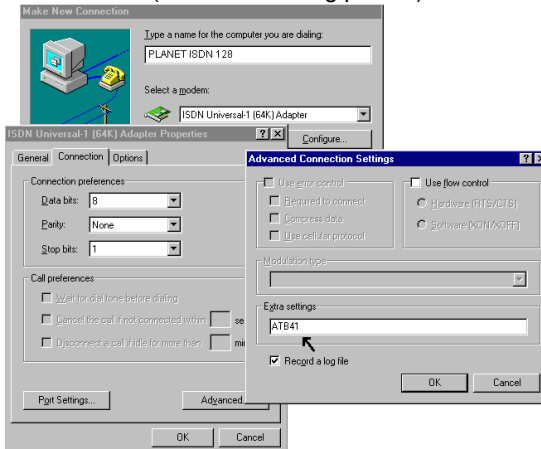


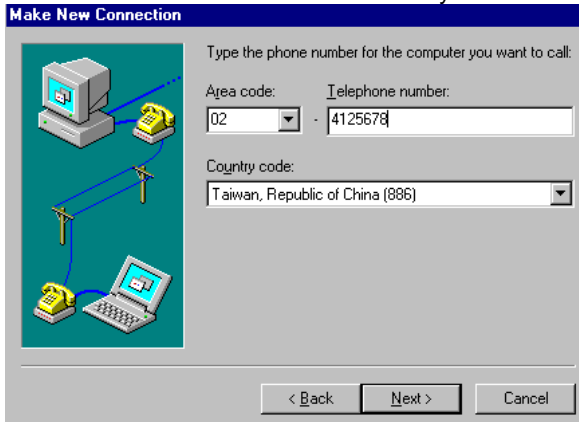
Figure 3-11 Choose ISDN Universal-1 Modem

- 3) Using Configure -> Connection -> Advanced -> Extra Settings to add the **ATB41** command (see the following picture). Click OK, OK.



- 4) Click on Next, on the next dialog box enter the area code and phone

number to use for first connection channel with your ISP.



- 5) Click on Next, Finish. There is now a new connection icon on the Dial-Up Networking group. **Click on right mouse button over the new connection icon to access Properties.**
- 6) On the Properties/General screen for the new connection make sure that Primary Device is set to the Universal-1 Modem related to the first ISDN COM port.
- 7) On the Properties/General screen click Settings tab and select the "Use additional device" option. Then click on Add ... so that you can **select the second Universal-2 Modem related to the second ISDN COM port under the "Device name:" list.** Then enter the phone number to use for second connection/channel. Please see the figure 3-12. Select OK.
- 8) Next go to the Properties -> Server Type screen and select "PPP: Windows 95, Windows NT 3.5, Internet" for the "Type of Dial-Up Service". Then under TCP/IP Setting make sure you enter the IP Address of user and DNS address for your ISP. Please refer the figure 3-7 for an example.

Now, setup for 128K (MLP) connection through virtual modem is done.

You can double click on the connect icon or click on the right mouse button and then select the Connect menu item the "Connect To" dialog is accessed. On the screen enter User name and the password and click on Connect. The system then dials and connects on first channel and then dials and connects on the second channel. Under certain circumstances Windows network will pop up with a connection dialog just after the first channel connection is made asking for user name and password. This can be disabled for future connections by entering your user name id and password again on this second screen.

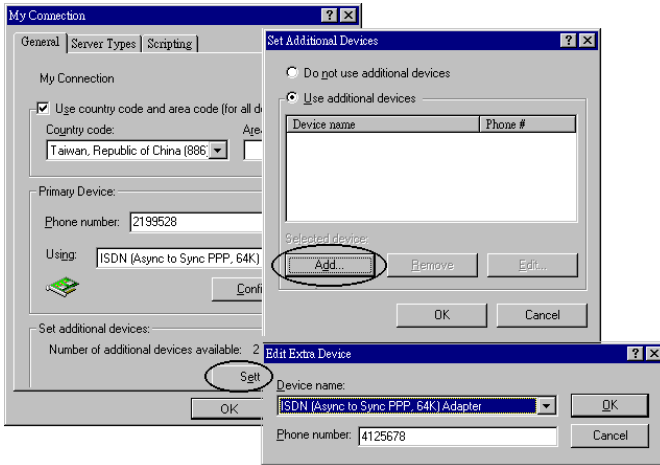


Figure 3-12 Choose additional device for 128K connection

Removing ISDN T/A 128 for Windows 95

To remove ISDN T/A 128 drivers from Windows 95 use the following steps.

1. Remove the NDISWAN adapter (NDISWAN driver), please do not select reboot windows after removing. Start ->Settings ->Control Panel ->Network, choose PLANET IINWan95 - ISDN Adapter, -> Remove.
2. Remove all of the virtual modems associated with ISDN T/A 128 Adapter COM ports. Please do not select reboot windows after removing Start -> Settings -> Control Panel -> Modem, Remove.
3. Remove the ISDN adapter from multifunction adapter. Please do not select reboot windows after removing. Start -> Settings -> Control Panel -> System -> Device Manager -> Multi-function adapters -> ISDN PC Adapter, Remove.
4. Run "iinclean.exe" located in installation disk to move away files and system information from Win95.
5. Reboot the windows to take effect.

Installation for Windows 98 Environment

The current Windows 95 driver can be installed in Windows 98 and work fine. However, due to Windows 98 includes the NDISWAN miniport interface, you

do not need install the ISDN pack (MSISDN11.EXE), and directly install our NDISWAN driver from installation disk.

We will also provide Windows 98 driver at the installation disk, this installation program can install the ISDN driver, virtual COM port, and NDISWAN miniport driver at that same time. Please refer the section of "Installation for Windows 95 Environment". Please feel free to browse our FTP server for our latest drivers as well.

Installation for Windows NT Environment

In the Windows NT system, the ISDN T/A 128 driver supports of multi-processors platform. It can benefit to the powerful users running the ISDN T/A 128 internal card on the multi-processors NT system.

You can install the ISDN T/A 128 Adapter with ISDN connection under Windows NT using either the standard CAPI interface, or the NDISWAN Miniport adapter. Please read the following steps for details of NDISWAN Miniport setup, Dial-Up Networking, and RAS applications in Windows NT 4.0. The installation for Windows NT 3.51 is very similar to NT 4.0. Please refer the following steps for Windows NT 3.51 also.

Installing and Configuring the Drivers

After you insert the ISDN card into the available slot and turn on your computer as described before, your computer should boot into Windows NT. Please follow the instructions below to install the ISDN T/A 128 driver.

1. Click the Network Icon in the Control-Panel and Adapters tab. You will get the below window .

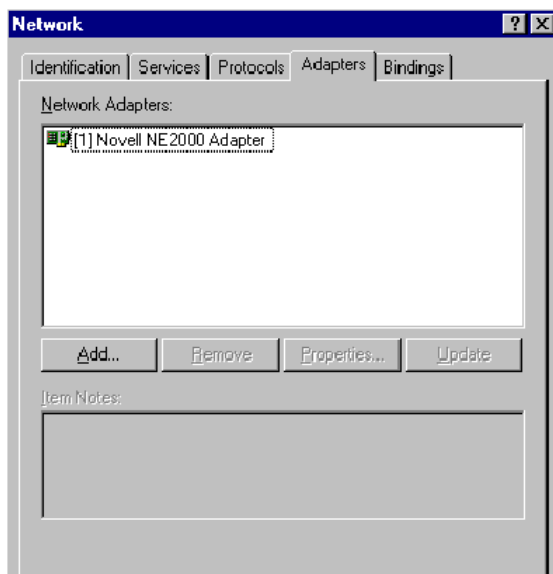
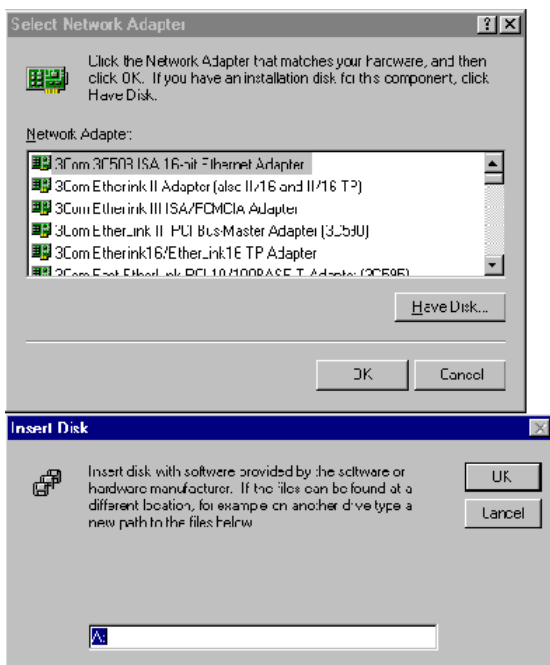
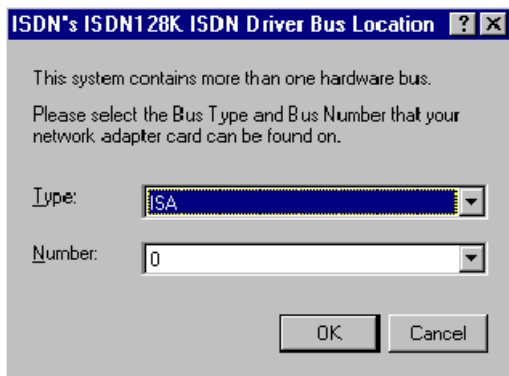


Figure 3-13 NT Installation

2. Click Add, then you get a window as below.



3. Click Have Disk tab and specify the Drive and Directory of ISDN T/A128 NT driver.
4. Select the "PLANET's ISDN PC Adapter", click OK.
5. You will see the ISDN Driver Bus Location dialog box, please fill the Bus Type to ISA or PCI and the Bus Number to 0, then click OK. (The example here is using IA128, ISA Adapter)



6. Windows NT copies the ISDN driver into system.
7. The ISDN configuration windows will now be shown as below (figure 3-14). We provide the IRQ and IO configuration by manually when it is required. But we suggest that **use our Auto configuration** first even your BIOS not support PnP feature. In the ISDN Configuration dialog box, you can fill the "calling party number" and "calling party subaddress" from NDISWAN Setting tab. If your telephone company offers the MSN service, you can use these parameters to get the bill of your respective MSN ISDN telephone number. All of the other parameters please refer the section above for Windows 3.1 installation.

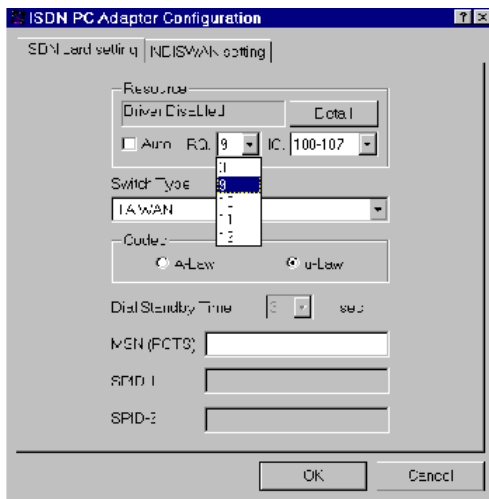
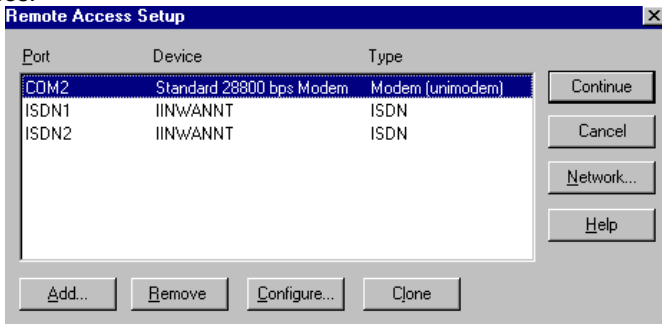


Figure 3-14 ISDN Configuration

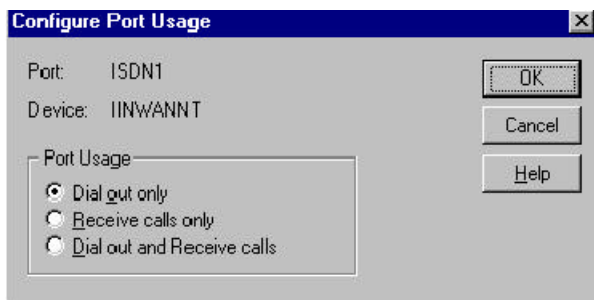
8. Click OK to continue.
9. If you change any value in the ISDN configuration dialog box, you will be warned that you will need to restart the Windows NT for the settings to take effect.
10. Click OK to install and setup RAS.



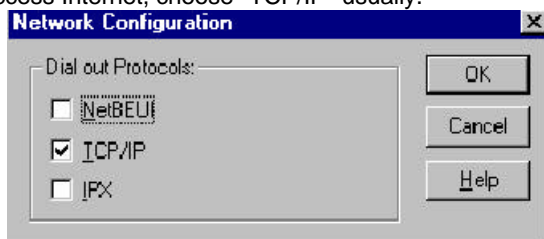
11. If you have installed the RAS, please refer next step to install ISDN ports for RAS. If not, please install the RAS now. Please refer figure 3-13, click the services tab to add RAS. The RAS is provided by Microsoft, you need to prepare the Installation disks or CD of Windows NT to continually install it. You should jump to next step when RAS installer asks to add port device.
12. You will get a window like below. If you do not see the ISDN ports with the device name of IINWANNT, then click the Add tab to add both IINWANNT devices.



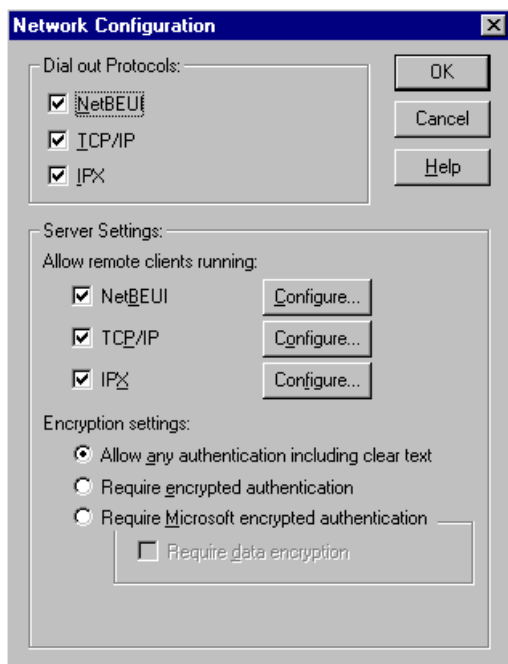
13. Select the ISDN1 and click Configure tab to set the parameter (Port Usage) to this ISDN1port for "Dial out only", "Receive calls only", or "Dial out and Receive calls" then click OK.



14. If you choose "Dial out only", click OK, and then click the Network tab, you will get a window like below, check which protocol you want. If you are going to access Internet, choose "TCP/IP" usually.



15. If you choose "Receive calls", or "Dial out and Receive calls", click OK and then click the Network tab, you will get a window like below. Please check your ISP or network administrator for TCP/IP settings (see Appendix C for assistance). Also check that you have enabled, "allow any authentication including clear text", in the Security settings. Then click OK.

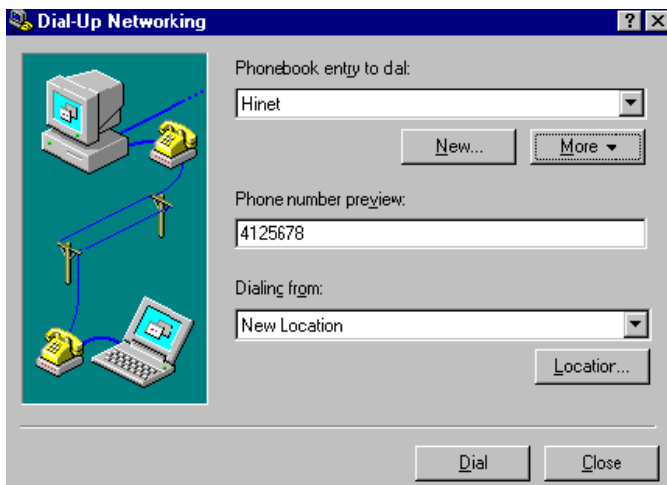


16. Select the ISDN2 and do the same things as above, then click Continue tab.
17. At this stage, you have installed the ISDN drivers in your Windows NT successfully, then click Close tab.
18. You need to restart your computer now.

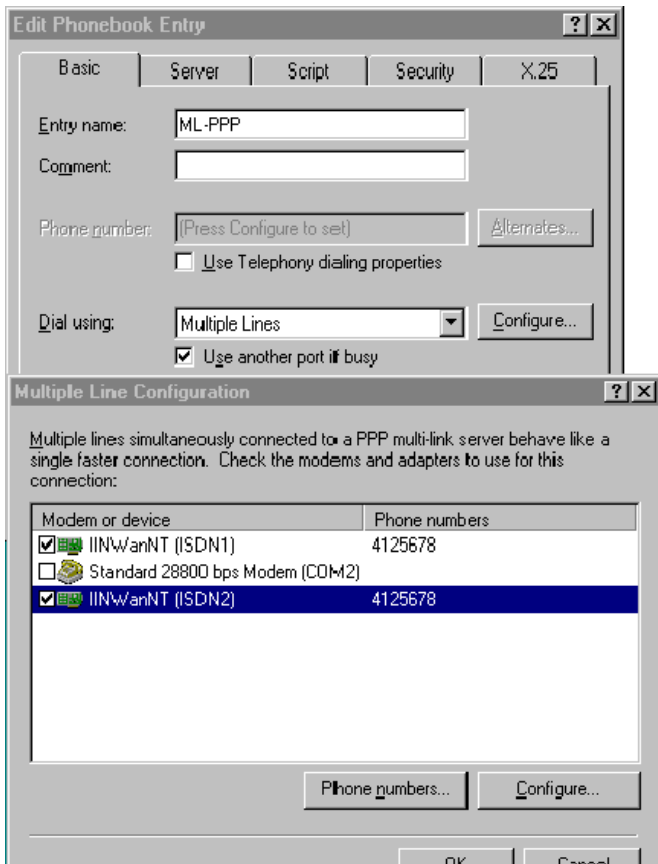
Configuring an Access Account over ISDN

Now, you need to configure an access account over ISDN in Dial-Up Networking.

1. Select Start -> Programs -> Accessories -> Dial-Up Networking. And then enter the name of the new Dial-Up account and click "Next >". Enter the server type details for your ISP. Click "Next >" and select IINWANNT and click "Next >". Enter the phone number of ISP and click "Next". Click "Finish". You will get a window like below.



2. To configure server settings or dialing properties, click on the "More" button and select the item you want to change from the pull down list. Click "Dial" to make a connection with server over ISDN. To compare with Windows95 Dial-Up Networking, these parameters (phone number, dial using port, server type, and security) are located in the item "Edit entry and modem properties.." when click on the "More" button. In the "Security" sub-window, check that you have enabled "Accept any authentication including clear text".
3. If you want to use Multilink PPP connection (128Kbps), please follow the steps below.
 - a. Click "More" button and select the item "Edit entry and modem properties".
 - b. Under the Basic tab, set "Dial using:" to Multiple Lines.
 - c. Click Configure and check the check boxes for IINWANNT(ISDN1) and IINWANNT(ISDN2).
 - d. Select IINWANNT(ISDN1), click "Phone numbers", enter the first phone number, click Add, and click OK.
 - e. Select IINWANNT(ISDN2), click "Phone numbers", enter the first phone number, click Add, and click OK.
 - f. You are now ready to make 2B connection with server. Please make sure that your ISP or remote server does in fact support 128K MLP and also that it has been enabled for you by the remote server.



Accessing the Outside World Using Dial-Up Networking

You are now done with the configuration process and should be ready to make a connection with your server. Click the Dial-Up Networking icon, and select the name configured above in the phone book entry and click "Dial". The system should then dial and connect to your ISP at either 128k or 64k depending on how you setup the call. The server will verify your login name, password, and register you on the server.

If you double-click the small icon of Dial-Up Networking at the right-bottom of the Windows, the Dial-Up Networking Monitor shows your connection status including connection speed, server type, etc. You are now ready to use the Internet tools to access the Internet or network tool to access remote network.

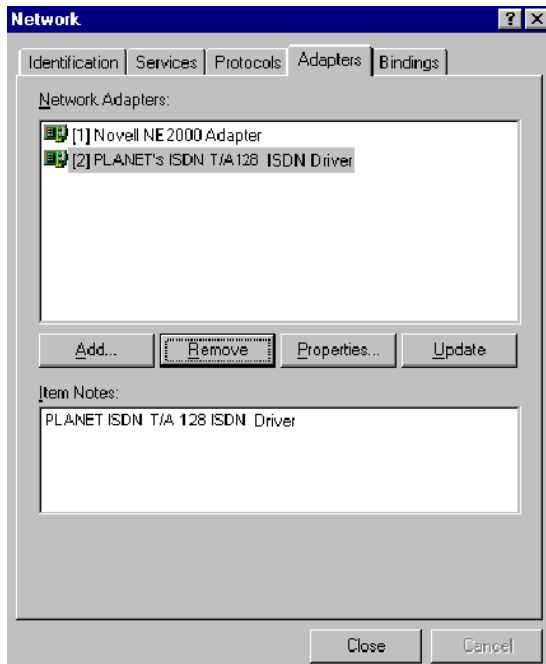
If you find problems after connecting such as the line is dropped or you cannot access the Internet, or you cannot access your remote network, please go back to check your network settings with your ISP or network administrator.

Reconfigure the ISDN Settings

If you want to reconfigure the ISDN settings such as Switch type, Codec and so on, please click the Network icon in the Control Panel and Adapter tab. Select the "PLANET ISDN PC Adapter" and click Properties. You will see the a Bus Location dialog box, please click OK. Then the ISDN configuration windows will be shown on the screen, see figure 3-14.

Removing ISDN T/A 128 for Windows NT

Click the Network Icon in the Control-Panel and Adapters tab. You will get the below window, and choose PLANET's ISDN T/A ISDN Driver, then click Remove.



Free driver upgrades and update product news are available from our web site at <ftp://ftp.planet.com.tw>. You are welcome to visit our web site and send your comments to us.

Chapter 4 ComPort Emulator

The ISDN T/A 128 support Microsoft Windows Comm. API interface. This allows applications to access ISDN T/A 128 as if they were a modem (please note that this emulation does NOT support fax features). Windows Comm. API also enables existing applications based on the AT command set to access ISDN. This feature is called the Comport Emulator and also allows extra AT commands to enable ISDN features such as HDLC, X.75, V.120, or Async to Sync PPP (see list below). The V.110 will be provided soon, please contact <ftp://ftp.planet.com.tw> for information and to download the latest driver.

1. Windows 3.1 system. Windows Comm. API is enabled only after running the `atloader.exe` program, (double click the AT Console icon, see figure 3-2). AT console will not be activated automatically at startup unless you add it to the StartUp group in Windows 3.1. Normally you should activate yourself.
2. In Windows 95 system. Windows Comm. API is enabled automatically.

Note: Windows Comm. API can only provide AT-emulation if the application requests its COM port services from Windows. It cannot support the application if it tries to access the com port hardware directly or if your software does not use the standard Windows comm. driver interface.

The following AT Commands are provided to allow control of the ISDN connections, line protocols and call handling. You should change your application setup-strings using these parameters to access ISDN T/A 128 Adapter with the correct protocol and settings.

Command	Samples	Description
ATA		Answer an incoming call
ATBn		Select protocol of transmission in B channel
	ATB0	64K HDLC (default with universal modems under Win95)
	ATB20	V.120 Async.
	ATB21	V.120 Sync.
	ATB3	X.75 Transparent, the same as ATB30 (default with ISDN X.75 Transparent modem under Win95)
	ATB30	X.75 Transparent
	ATB31	X.75 T.70 NL
	ATB32	X.75 ISO 8208

	ATB4	Async- to-Sync PPP converter (default setting with Win95 Async to Sync PPP modem)
	ATB41	Async-to-Sync PPP conversion in ML PPP mode, compatible with Microsoft ISDN Accelerator pack
	ATB42	Async-to-Sync PPP conversion in ML PPP mode
	ATB43	Async-to-Sync PPP conversion in ML PPP + BOD (Bandwidth on Demand)
	ATB6	Async-to-Sync PPP conversion over X.75 Trans
	ATB61	Async-to-Sync PPP conversion over X.75, but need to setup secondary device in Dial-Up Networking
	ATB62	Async-to-Sync PPP conversion in ML PPP over X.75.
	ATB63	Async-to-Sync PPP conversion in ML PPP + BOD over X.75.
ATDs		Dial a telephone number
	ATDL	Dial the last number
	ATD2199528	Dial telephone number 2199528
ATEn		Echo characters when in command mode
	ATE0	Echo off
	ATE1	Echo on (default)
ATHn		On-Off Hook
	ATH	On-Hook, Disconnect (same as ATH0)
	ATH1	Off-Hook
ATI		Display version number, selected protocol, packet size, connected speed, MSN, and outgoing call number.
ATO		On-Line command, switch to on-line mode from command mode
ATQn		Return the result code
	ATQ0	Return the result code (default)
	ATQ1	Does not return the result code
ATSr		Set or display the register value
	ATS0=1	Set register 0 to 1, (S0=0 default, disable the auto-answer mode)
	ATSr?	Display register r content
	ATS1?	Register 1 is read only, display the ring count
	ATS2	Escape code character (S2=43, ASCII "+")
	ATS3	Carriage return character (S3=13, representing a carriage return)
	ATS4	Line feed character (S4=10, representing "CTRL J" or the line feed character)
	ATS5	Back space character (S5=8, representing "CTRL H")
ATS7	Wait for carries after dial (S7=30 seconds default)	

	ATS12	Escape code guard time (S12=50 default)
	ATS25	Delay to DTR (S25=5 default)
	ATS38	Windows size of HDLC 56K or 64K, 7 default
	ATS39	Packet size of HDLC 56K or 64K from 1 to 2048, 2048 default
	ATS40	Windows size of V.120, 7 default
	ATS41	Packet size of V.120, 256 default
	ATS44	Window size of X.75 (Transparent), 2 default
	ATS45	Packet size of X.75 (Transparent) from 1 to 2048, 1024 default
	ATS46	Window size of X.75 T.70 NL, 2 default
	ATS47	Packet size of X.75 T.70 NL from 1 to 2048, 130 default
	ATS50	Window size of X.75 ISO 8208, 2 default
	ATS51	Packet size of X.75 ISO 8208 from 128 to 2048, 1024 default
	ATS51	Average data flow from 1000 to 7000 bytes (default 4, it means 4000 bytes) Active the second channel if average data flow is over 4000 bytes in 10 second. This register is only available in ML PPP+BOD mode. (ATB43 enabled)
	ATS54	Time period from 5 to 20 minutes (default 5) Disconnect the second channel if average data flow below N bytes (set by ATS53) in 5 minutes. This register is only available in ML PPP+BOD mode. (ATB43 enabled)
ATVn		Verbose command
	ATV0	Return digit result code
	ATV1	Returns word result code (default)
ATXn		Enable extended result code
ATZ		Reset
+++		Escape command
AT&Cn		Control DCD
	AT&C0	Keep always the DCD line ON (the same as AT&C, default)
	AT&C1	DCD line is active if connected
AT&E		Select the line speed in the B channel
	AT&E0	64K bps (default)
	AT&E1	56K bps
AT&F		Reset registers to factory setting
AT&R		Request to send
AT&S		Handle DSR
	AT&S0	Keep DSR always ON (the same as AT&S)
AT&ZIn*m		Filter the incoming call and accept it when called party number is the same as n and called party sub-

		address is the same as m (option, * is the sub-address symbol)
AT&ZOn*m		Make a call with this caller party number (n * m). "n" is the local telephone number, "*" is the sub address symbol, if needed (option), and "m" is the sub address (option).
AT#C		Caller ID setting
	AT#C?	Display the current Caller ID mode
	AT#C0	Disable Caller ID (default)
	AT#C1	Enable Caller ID

Chapter 5 Troubleshooting

ISDN T/A 128 provide "LINETEST" and "LOG" utilities to test ISDN line status, and monitor/record ISDN handshaking procedures and transmit/receive data contents.

You can use "LINETEST" to loopback test between ISDN switch and subscriber site, and get the ISDN line status. If ISDN line work okay, you can use "LOG" to get detailed information during ISDN communication. If you have any problems about connections, you can use these tools to do self-diagnostic. You can also email or send the contents of "LOG" file to our local technical support or us.

ISDN T/A 128 LINETEST

You can run "linetest.exe" in Windows 3.1 and 95, or "lt32.exe" in Windows NT to enable our "LINETEST" utility. After executed this program and you will be asked to enter your own ISDN telephone number. After you click the START, ISDN T/A_ will enable the call setup for testing. LINETEST will test the line status of ISDN B and D channels between the ISDN T/A_ adapter and the ISDN switch network.

If any errors are reported during the loopback test then please see the following listing for explanations of the messages. If you get an error of 3301 or 3302, that means your ISDN line is not connected properly. Please check your ISDN line connections.

<p>Note: Before execute LINETEST, you must make sure ISDN line is available for testing (i.e. no other person is using the ISDN line).</p>

LINETEST Error Messages (CAPI 2.0)

0x3301	protocol error layer 1
0x3302	protocol error layer 2
0x3303	protocol error layer 3
0x3304	another application got that call
0x3401	unsigned number
0x3402	no route to specified transmit network
0x3403	not route to destination
0x3406	channel unacceptable
0x3411	user busy
0x3412	no user responding

0x3413	no answer from user
0x3415	call reject
0x3416	number changed
0x341a	non-selected user clearing
0x341b	destination out of order
0x341c	invalid number format
0x341d	facility rejected
0x341e	response to status inquiry
0x341f	normal, unspecified

ISDN T/A 128 ISDN LOG

There are six functions in the ISDN "LOG" utility, START/STOP, SAVE, CLEAR, PRINT, OPTION, and CLOSE. Figure 5-1 below shows a typical log screen. The upper text box of the LOG dialog box records the ISDN communication information contents and the lower white screen area logs statistical details of D and B-Channels events.

In Windows 3.1, "ISDN Log" will be executed after clicking "ISDN LOG" icon (figure 3-2). In Windows 95, "ISDN Log" will be executed after run the "log.exe" located in \windows directory. In Windows NT, "ISDN Log" will be executed after you run the "log32.exe" located in \winnt\system32 sub-directory.

The screenshot shows the "ISDN monitor v2.20" window with a menu bar (START, SAVE, CLEAR, PRINT, OPTION, CLOSE) and a log window. The log contains the following text:

```

20:22.3222 Net C SAPI=0 TEI=126 RR P=1 NR=4
20:22.3222 Usr R SAPI=0 TEI=126 RR F=1 NR=3
20:23.3223 Usr C SAPI=0 TEI=126 INFO P=0 NR=3 NS=4
          Orig PD=Q.931 CR=0X02 SETUP
1 10100001 INFORMATION ELEMENT : Sending complete
1 00000100 INFORMATION ELEMENT : Bearer capability
2 00000010 IE Length : 2 Octets
3 1----- Extension Bit : Not Continued
  -00----- Coding Standard : CCITT
  ---01000 Info. trans. cap. : Unrestricted digital information
4 1----- Extension Bit : Not Continued
  -00----- Transfer Mode : Circuit mode
  ---10000 Info. transfer rate : 64 kbit/s
1 01110000 INFORMATION ELEMENT : Called party number
2 00001000 IE Length : 8 Octets
3 1----- Extension Bit : Not Continued
  -000---- Type of Number : Unknown
  ---0000 Numbering Plan Id. : Unknown
4 ***** Number Digits : 4125678
20:23.3223 Net R SAPI=0 TEI=126 RR F=0 NR=5
20:23.3223 Net C SAPI=0 TEI=126 INFO P=0 NR=5 NS=3
          Dest PD=Q.931 CR=0X02 CALL PROCeeding
  
```

At the bottom, there is a status table:

	Status	Tx PKTs	Tx BYTEs	Rx PKTs	Rx BYTEs	UnderRUN	OverRUN	FrameERR
D	ACTIVE	29	189	29	188	0	0	0
B1	IDLE	34	1676	28	5603	0	0	0
B2	IDLE	0	0	0	0	0	0	0

Figure 5-1 ISDN T/A 128 "ISDN LOG"

- START/STOP** : Begin or end data logging.
- SAVE** : Save the entire log history contents to a disk file. If there is any problem, customers can use this function e-mail or fax the LOG file to our local technical support center or us.
- CLEAR** : Clears the Log contents. You may want to save the data before erasing it.
- PRINT** : Send the Log contents to the printer.
- OPTION** : When you click the OPTION tab, you will see the Options dialog box as shown below. Using this dialog you can select to log specific types of line information for the ISDN D channel, B channels, and CAPI messages. If you do not enable the Show statistic item, you will not see the bottom part of the LOG dialog box (see figure 5-1). The information pertaining to the ISDN D channel is presented in a manner similar to that presented on a protocol analyzer. The information for ISDN B channel and CAPI is presented with Hex format.



- CLOSE** : Terminate the "PLANET ISDN Log" function.

Error Messages

You may encounter the following runtime problems.

1. "Can not find CTL3D.DLL". This reports that your Windows system does not provides 3D graphics. The ISDN T/A 128 driver will continue to execute normally but without the 3D control graphic feature. You may contact your PC or system dealer to upgrade your Windows system to get this extra feature.
2. "IRQ Selftest Fail". This reports that ISDN T/A 128 VxD driver failed its IRQ self-test. Check the IRQ values in system Resources. Select Start -> Setting -> Control Panel -> System -> Device Manager -> ISDN card, ISDN PC Adapter -> Resource. The PC system may have a non-PnP device using the same IRQ number as ISDN T/A 128 Adapter. This error is common in systems which have an ISA bus sound card installed in the PC (using IRQ5). In this case choose another IRQ number (probably both hardware and software configurations) for this non-PnP device and reboot

the system.

If using Win95 then you can change the IRQ used by the ISDN card in the device manager. Use Control Panel/System/Device Management/Multi-function adapters/ISDN T/A PC Adapter (Master Device)/Properties/Resources then disable the "Use automatic settings" option. Then select the Interrupt Request/ Change Setting and select a non-clashing IRQ value to use. If IRQ 5 is not available then a good choice could be IRQ 10 or 12 but which ever one you use check that there are no clashes.

3. "Can not find ISDN card". This message describes that ISDN T/A 128 VxD driver does not find the ISDN T/A 128 Adapter when Windows starts. The problem may be associated with an I/O address or IRQ clash during PnP initialization. Please check your system resources. You may need to reinstall the ISDN T/A 128 driver.

Appendix A Specifications

Physical Interface:

1. RJ-45 "S/T" Interface or RJ-45 "U" Interface
2. POTS (a/b) Interface (DV model)

D Channel Signaling Protocol Compatibility

1. US NI-1 & NI-2, AT&T 5ESS, Nortel DMS-100
2. Euro-ISDN (DSS1, 1TR6)
3. Japan INS-64

B Channel Protocol Compatibility

1. V.110, V.120
2. Data (56K, 64K, 112K or 128K HDLC)
3. X.75 (Transparent, T70NL, EuroFT)
4. PPP, MLP, Async-to-Sync. PPP conversion and MLP+BOD
5. Voice

Application Interfaces

1. WinISDN
2. CAPI 2.0
3. Windows Comm. API with AT command sets (COM port emulation)
4. NDISWAN Miniport for Windows 95 and NT

Supported Applications

1. WinISDN interface such as NetManage's Internet Chameleon, ...
2. CAPI interface such as RVS-COM, ...
3. Windows Comm. API such as Microsoft HyperTerminal, PC Anywhere, Co-Session, ...
4. NDISWAN interface such as Microsoft Dial-Up Networking and RAS, ...

Hardware

1. 16-bits adapter available in ISA or PCI bus
2. PnP with 16 bits address decoding for Windows 3.1, 95, and NT systems

The specification is subjected to change without notice. All brand and product names are acknowledged as trademarks of their respective companies.

Appendix B EC-Type Examination and FCC Regulation

Both ISDN T/A 128 ST models (IA128-STD and IA128P-STD) have passed the necessary EMC & LVD tests and are fully Euro-ISDN (EC) and German BZT approved. Depends on the exact model name, it may also approved in Slovenia and other European countries. The EC Registered Certificate numbers for ISA ST (IA128-STD) models are as follows, the EC certificate number will be changed when the next generation model unveiled.

Model number	CE	BZT
IA128-STD	9741780-01	D131717J
IA128-STDV	607410	D132608J

Both ISDN T/A 128 U models (IA128-UD and IA128-UDV) have passed FCC rules. The FCC Part 15 ID and Part 68 registration numbers as follows.

Model number	Part 15 ID	Part 68 REG. NO.
IA128-UD	M2G100-I-UDD	5ZDTAI-24422-DE-N
IA128-UDV	M2G100-I-UDV	5ZDTAI-24419-DE-N

Operation is subject to the following two conditions:

1. This device may not cause harmful interference.
2. This device must accept any interference received including interference that may cause undesired operation.

ETS 300 047 Requirements

To comply with NET3/ETS 300 047 safety requirements covering basic rate access ISDN equipment intended for installation in a PC system the following restrictions apply:

The ISDN cord(s) must remain disconnected from the telecommunications system until the card has been installed within the PC and the PC cover replaced.

If it is subsequently desired to open the PC equipment for any reason, the ISDN cord(s) must be disconnected prior to effecting access to the ISDN communications card.

The power requirement for the ISDN T/A(ST adapter are:

All voltages are DC and the voltage tolerances are +/- 10%.

	5V	12V	-5V	Total Power
Idle mode	241.9mA	26.49mA	6.63mA	1587mW
B1 <-> B2	242.1mA	26.50mA	6.63mA	1589mW
Analog Port used	250.7mA	168mA	6.85mA	3346.6mW

The Relevant Equipment shall be installed such that with the exception of the host bus connector, a clearance distance of 4.0mm and a creepage distance of 5.0 (8.0)mm is maintained between the Relevant Equipment and all other parts of the host including any expansion cards which use or generate a voltage less than 250V (rms or dc); the creepage distance shown in brackets applies where the local environment within the host is subject to conductive pollution or dry non-conductive pollution which could become conductive due to condensation.

For a host or other expansion cards fitted to the host using or generating voltages greater than 250V (rms or dc), advice from a competent telecommunications safety engineer must be obtained before installation of the Relevant Equipment.

EN60950 Requirements

All ports on the ISDN T/A(ST cards operate within limits of SELV with the exception of the POTS ringer port which operate within TNV limits. SELV and TNV limits are as defined in EN60950.

FCC Requirements

These equipments comply with Part 68 of the FCC Rules. On the bottom of this equipment is label that contains, among other information, the FCC Registration Number.

When registering the service, provide the following information to the telephone company:

PORT	FIC	SOC	JACK
144Kbps Subrate	02LS5	6.0N	RJ49C

If your telephone equipment cause harm to the telephone network, the telephone company may discontinue your service temporarily. If possible, they will notify you in advance. But if advance notice is not practical, you will be informed of your right to file a compliant with the FCC.

Your telephone company may changes in it's facilities, equipment, operations or procedures that could affect the proper functioning of your equipment. If they do, you will be notified in advance to given you an opportunity to maintain uninterrupted telephone service.

Appendix C Applications

This Appendix gives the introductions of ISDN T/A 128 (with the popular applications).

TRUMPET Setup through COM Port Emulation

In Windows 95 system, the virtual COM port driver will automatically be enabled on system startup through Microsoft's Windows Comm. API.

In Windows 3.1 system, run the AT Console application from the ISDN T/A 128 group to enable the COM port emulation capability. Trumpet is the popular Internet dialup software in Windows 3.1. TRUMPET Provides the TCP/IP stack including PPP and COM port interface. You should change the following parameters to access ISDN T/A 128 driver in Windows 3.1.

Note: Run "AT Console" first to enable COM port emulation.

1. Select Setup ... option from the File menu. Use COM3 or COM4 for SLIP port. Sometimes the default for TCP MSS is 1460, this does not work and should be changed to 1400.

Network Configuration					
IP address	0.0.0.0				
Netmask	255.255.255.0	Default Gateway	0.0.0.0		
Name server	139.175.1.10	Time server			
Domain Suffix	tpts1.seed.net.tw				
Packet vector	00	MTU	1500	TCP RWIN	4096
				TCP MSS	1400
Demand Load Timeout (secs)	5			TCP RT0 MAX	60
<input type="checkbox"/> Internal SLIP <input checked="" type="checkbox"/> Internal PPP					
SLIP Port	3	Online Status Detection			
Baud Rate	30400	<input checked="" type="radio"/> None			
<input checked="" type="checkbox"/> Hardware Handshake		<input type="radio"/> DCD (RLSD) check			
<input type="checkbox"/> Van Jacobson CSLIP compression		<input type="radio"/> DSR check			
Ok		Cancel			

2. Select Edit Scripts ... option from the Dialer menu and select to edit login.cmd. You must to edit login.cmd to make a successful PPP connection through ISDN. Refer to the following statements to edit your own login.cmd

```
#trace on
#
# set up some strings for dialling up in TRUMPET 2.0B
#
if ![load $number]
  if [query $number "Enter your dial up phone number"]
    save $number
  end
end
if ![load $username]
  if [username "Enter your login username"]
    save $username
  end
end
if ![load $password]
  if [password "Enter your login password"]
    save $password
  end
end
$modemsetup = "Z"
$prompt = ">"
$userprompt = "sername:"
$passprompt = "assword:"
$slipcmd = "slip"
$addrtarg = "Your address is"
$pppcmd = "ppp"

%attempts = 10
#-----
# initialize modem
#
output "atz"\13
if ![input 10 OK\n]
  display "Modem is not responding"\n
  abort
end
#
# enable the Async to Sync PPP conversion
#
output "atb4"\13
if ![input 10 OK\n]
  display "Modem is not responding"\n
  abort
end
#
# setup our modem commands
```

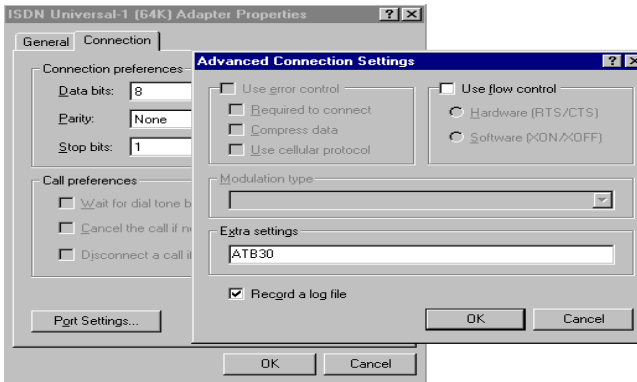
```
#
output "at"$modemsetup\13
input 10 OK\n
#
# send phone number
#
%n = 0
repeat
  if %n = %attempts
    display "Too many dial attempts"\n
    abort
  end
  output "atdt"$number\13
  %ok = [input 60 CONNECT]
  %n = %n + 1
until %ok#
```

3. This completes the basic setup for ISDN access. You will also need to modify certain other parameters, such as dial number, login name, and password if required. These parameters are application dependent and are not covered any further here. If you use different the TRUMPET version, you may contact our local distributor for support.

Microsoft HyperTerminal

If you are trying to use the HyperTerminal of point to point or BBS connection, you should choose or add a virtual modem which is attached to the ISDN ComPort. Please refer to Chapter 3 about Installation of ISDN T/A 128 driver and setup for virtual modem in Windows 95 system. Ensure that you use the ISDN (X.75 Transparent, 64K) Adapter modems or use the universal modems but use the ATB3n command in Advanced Settings to select the X.75 protocol. (see below)

At the receiving site, you should enter ATSO=1 to automatically answer incoming calls. Note that the default protocol in the B channel is HDLC 64K with packet size 2048. If you would like to change the B channel protocol use the following steps.



Go to extra setting field : Start -> Settings -> Control panel -> Modems -> Properties -> Connection -> Advanced -> Extra settings. Please see Figure 3-7 and Chapter 4 about ATBn setup.

We recommend you change the package size in B channel to improve reliability and performance. Set packet size to 512 bytes using "ATS39 = 512" in Extra Setting field or input the value manually. For example, to select a X.75 Transparent with 1024 packet size for B channel connection use, ATB30S45=1024.

Note: the setting values for B channel protocol, packet size, or Window size will be reset to default value when finish the application. If you would like to make these changes permanent then enter the settings in the Extra settings field as shown above.

RVS-COM

The ISDN CAPI (ISDN T/A(driver) have to be installed first - before installing RVS-COM. Here's how you install RVS-COM on your computer:

1. Place the RVS-COM CD in your CD drive.
2. If the Setup program doesn't start by itself: In the Taskbar select Start: Run. Enter D:\SETUP (substitute the appropriate drive letter for your CD drive, if necessary). Click on OK.
3. You will be asked to type in the key for your copy of RVS-COM. Depending on the version of the program, you will find this information on a separate card or on the back of the CD case.

4. The Setup program will now start. Please follow the instructions on the screen.
5. Depending on the version, you may also have received a Service Pack with your RVS-COM CD which takes into account the most current changes in the program. Please insert the diskette into the drive when you are prompted to do so.
6. Restart your computer if the program requests you to do so.
7. The Installation Wizard will then start automatically and will help you to configure RVS-COM. The Wizard will prompt you for all relevant settings.
8. After installation, the RVS-COM programs will be located in the list of programs named RVS-COM. You reach this by clicking on Start in the Taskbar and then selecting Programs.

Open the online documentation to quickly familiarize yourself with RVS-COM.

PC Anywhere

ISDN T/A 128 provide COM port emulation function, so it could be used by standard remote access products such as PC Anywhere and Co-Session. PC Anywhere is a very popular application for point-to-point remote access. Recent versions of PC Anywhere can also be configured to interface to CAPI2 ISDN devices. When PC Anywhere is configured to use CAPI2 it will automatically work with the CAPI driver interface installed with the ISDN T/A_ adapter.

WinGate

ISDN T/A 128 support the popular proxy server software, such as WinGate, GateKeeper and LANTASTIC. Through these software, the LAN user can login into the Internet share the same ISDN card. It will save more communication cost. To interface these applications with the ISDN T/A(system use Win95 or NT4 Dial-Up Networking.

Compuserve Connection

Compuserve is the worldwide Internet connection service provider. ISDN T/A 128 Adapter supports the connection with Compuserve. Please directly contact our local distributor for detailed information.

Appendix D Virtual Modems

In this Appendix, it gives more explanations of the ISDN T/A 128 virtual modems and their purposes. Through these virtual modems, it can benefit to our customers [more easy installation, and flexibly control your time and cost](#).

1. [“Internet MLPPP”](#), the MLP (128K) access through our virtual modem of [“Internet MLPPP”](#), customer does not need to install the MSISDN11.EXE or DUN1.2 for adding the secondary device to achieve 128K Internet access.
2. [“Internet MLPPP+BOD”](#), the MLP+BOD (128K) access through our virtual modem of [“Internet MLPPP+BOD”](#), customer dose not need to install the MSISDN11.EXE or DUN1.2 for adding the secondary device to achieve 128K Internet access, and also benefits the Bandwidth-on-Demand capability. It means bandwidth (64K or 128K) will be depend on the data traffic and incoming/outgoing voice call. At the beginning stage, it will establish 1B (64K) data channel and wait the data traffic over the specific value (refer ATS53). If over this value, it will establish another B channel and bundle it to be 128K communication link for better performance. Once it is in the 128K mode and will drops 1 B channel (64K) based on the following three conditions.
 - a. The average data traffic is lower than the value (ATS53) in a specific time period (ATS54).
 - b. The customer wants to make an outgoing voice call such as picking up the handset.
 - c. There is an incoming voice call, the analog telephone device will have a ring signal. [With this BOD function, customer will have more flexibility to handle voice and data simultaneously.](#)
3. We also provide the virtual modems of [PPP, MLPPP, and MLPPP+BOD over X.75 capability](#). If your ISP or RAS server provide these kind of function, please select the virtual modem from our modem script file. Then it is more easy to configure and make a connection with ISP or RAS server. We provide the `ATS30=n` command for application to tell driver to disconnect the active connection automatically if there is no data traffic for $n \times 10$ seconds

How to configure the ISDN driver for above function?

Please refer Chapter 3 section of [“Adding virtual modems connecting with two ISDN COM ports”](#). You will see 5 more virtual modems in the selection list named [“Internet MLPPP”](#), [“Internet MLPPP+BOD”](#), [“Internet PPP over X.75”](#), [“Internet MLPPP over X.75”](#), and [“Internet MLPPP+BOD over X.75”](#) adapters. Select the appropriate virtual modem to meet your ISP or RAS server

requirement and select the ISDN Com port to use with this modem. All of the other steps are the same as described in the Chapter 3.

The 128K/MLP Access is still available, but now you have more easy-to-use virtual modem (adapter) to achieve 128K or 128K with BOD access goal.