



Cam Viewer Lite /

Cam Viewer Pro 30 days trial version

Quick Installation Guide

Version 1.0

Thank you for purchasing PLANET Internet Cameras. This quick installation guide illustrates the central manage software - Cam Viewer installation for Windows platform.

Cam Viewer Lite is the basic bundle software, provides the general function for your daily operation. For more powerful functions, you may install the Cam Viewer Pro 30 days trial version to experience more. After 30 days testing, you can contact your local dealer or direct connect PLANET sales team (sales@planet.com.tw) for this Cam Viewer Pro.

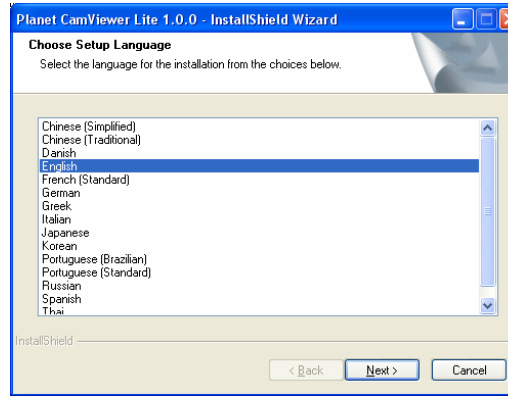
Software Installation

Note: The Cam Viewer Lite/Pro 30 days trial version installation steps are similar. Below is the installation of Cam Viewer Lite.

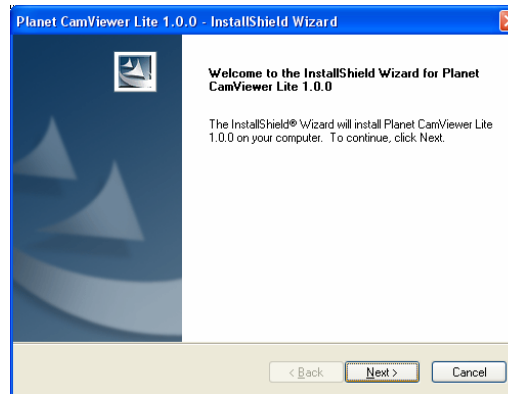
1. Insert the bundled Cam Viewer CD disk into the CD-ROM drive to launch the autorun program. Once completed, a welcome menu screen will appear. Click the "Cam Viewer Lite" hyperlink, the below InstallShield Wizard dialog box will appear.

Note: If the welcome screen does not appear, click "Start" at the taskbar. Then, select "Run" and type "D:\Cam Viewer Lite\setup.exe", assume "D" is your CD-ROM drive.

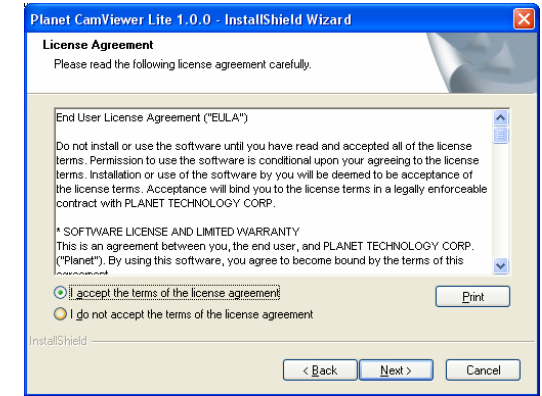
2. Selects the language which you want, Cam Viewer is current including fifteen languages. Please select one of the language and click "Next" to continue.



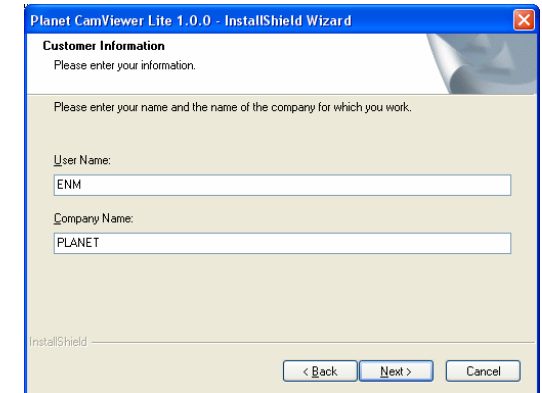
3. The "Welcome to the InstallShield Wizard for Planet Cam Viewer Lite 1.0.0" will display on the screen, please click "Next".



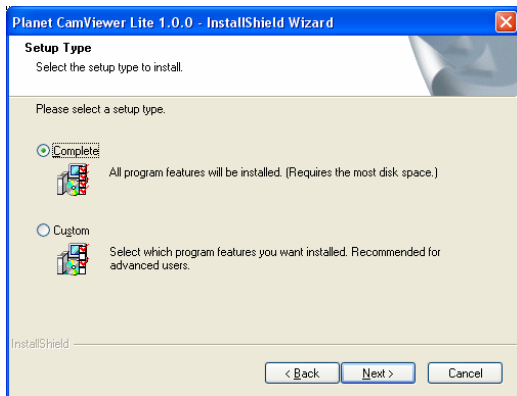
4. Please read the license agreement and then check "I accept the terms of the license agreement" if you are agreed and click "Next" to continue the installation



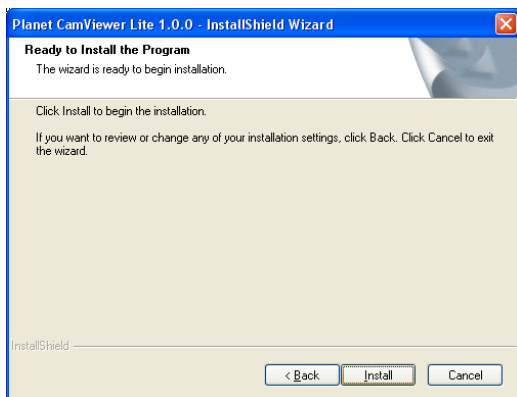
5. Please key in user name and company name for which you want and click "Next" to continue installation.



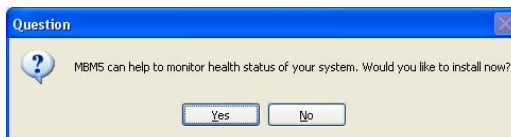
6. Check the option “Complete” – all program features will be installed (Requires the most disk space) and click “Next” to continue installation.



7. “Ready to Install the Program” will appear to prompt you to start the installation. Please click “Install” to start.



8. Please click “No” to finish the Cam Viewer Lite installation.



Note: In above step, when Cam Viewer works with MBM5 (Motherboard Monitor 5), Cam Viewer will display CPU temperature and fan speed. Please click “Yes” if you need this function and refer to the manual of Cam Viewer CD disk for complete installation.

For more information, please refer to the User’s manual in the bundled CD.

Appendix A: Suggest Hardware / System Requirement

Total FPS	CPU	RAM
~120	Intel P4 2.8 GHz	1GB
120 ~ 240	Intel P4 3.0 GHz	1GB
240 ~ 480	Intel Pentium D 930	2GB
480 ~ 600	Intel Core 2 Duo E6600	2GB
600 ~	Intel Core 2 Duo QX6800	4GB

Total FPS: Means all the cameras will spend how many frames when this software works. Suppose there are 10 cameras, each one will work with 30fps, the total fps should be 300fps.

Chipset of Motherboard	Intel 946 or 965 chip, Intel Chipset recommended
VGA Card	ATI Radeon 9200, nVIDIA GeForce FX-5200, Intel 945/965 or above (ATI recommended)
Ethernet	100 BaseTX or above, Gigabit LAN recommended
Hard Disk	160 GB or above
O.S.	Windows 2000 / XP / 2003

Appendix B: Feature Listing for Cam Viewer

Software Version	Cam Viewer Lite	Cam Viewer Pro
IP Camera Input	32	16 / 32 / 64
Dual Monitor	-	V
Smart Guard	-	V
I/O Device	V	V
Hotline	-	V
Address Book	-	V
Log Viewer	Unusual event System log	Unusual event System log Counting application
Counting Application	-	2 way counting
Remote Playback Server	-	Unlimited
Concurrent Playback	1 Channel	16 Channels
Counting Application	-	V
Smart Search	General Motion	General Motion Missing Object Foreign Object Lose Focus Camera Occlusion
Remote Live Viewer	1 Channel	16 Channel

Ordering Information for Cam Viewer Pro

Model	Description
CVP-16	16-Channel Cam Viewer Professional
CVP-32	32-Channel Cam Viewer Professional
CVP-64	64-Channel Cam Viewer Professional