

Professional
Central Management Software

Cam Viewer Pro
Quick Installation Guide

Table of Contents

Chapter 1. Introduction	3
1.1 Before Installation.....	3
1.2 System Requirements	4
1.3 Comparison Sheet.....	5
Chapter 2. Cam Viewer Installation	6
Chapter 3. Import Surveillance Product	19

Chapter 1. Introduction

Thank you for purchasing the IP surveillance application program. The Cam Viewer is a multi-camera video surveillance application that enables you to set up a comprehensive and effective surveillance system quickly and easily. It works with PLANET network cameras and video servers to provide video monitoring, recording and event management functions.

1.1 Before Installation

Before installation, please be sure to read this quick installation guide and user's manual (CD) carefully to complete machine installation.

This QIG includes the following chapter:

- Chapter2. Cam Viewer Installation
- Chapter3. Import Surveillance Product

1.2 System Requirements

The system consumes huge of computation power to decode and record multiple video streams from IP cameras. Therefore, bear in mind that much faster CPU speed and higher system memory will be very useful to handle and process multi-channel video streams. Here is a minimum recommendation of system requirement as below:

Total FPS at VGA (30FPS for Each Camera)	~600	600~480	480~240	240~120	120~
CPU	Intel Core 2 Duo QX6800	Intel Core 2 Duo E6600	Intel Pentium D 930	Intel P4 3.0 GHz	Intel P4 2.8 GHz
RAM	4 GB	2 GB	2 GB	1 GB	1 GB
Chipset of Motherboard	Intel 946 or 965 chip, Intel Chipset recommended				
VGA Card	ATI Radeon 9200, nVIDIA GeForce FX-5200, Intel 945/965 or above (ATI recommended)				
Ethernet	100 Base-TX or above, Gigabit LAN recommended				
Hard Disk	160 GB or above				
O.S.	Windows 2000 / XP / 2003				

Also it does strongly recommend that close the unnecessarily programs while running Cam Viewer to monitor and record video stream from IP cameras.

1.3 Comparison Sheet

	Cam Viewer Lite	Cam Viewer Pro
IP Camera Input	Up to 32 channels	Up to 64 channels
Dual Monitor	No	Yes
Recording Schedule	Motion Record	Motion Record
Smart Guard	No	Yes
General Setting	Yes	Yes
Camera Setting	Yes	Yes
I/O Device Setting	Yes	Yes
PTZ configuration	Yes	Yes
Send Mail	No	Yes
User Account	Yes	Yes
Counting Application	No	Yes
Log Viewer	System log	Unusual event; System Log: Counting Application
Backup	CD-ROM; Hard Disk	CD-ROM; Hard Disk
Live Streaming Server	Yes	Yes
Remote Playback Server	No	Yes
Concurrent Playback Channel	1	16
Save Video	AVI	AVI
Multiple Language	Yes	Yes

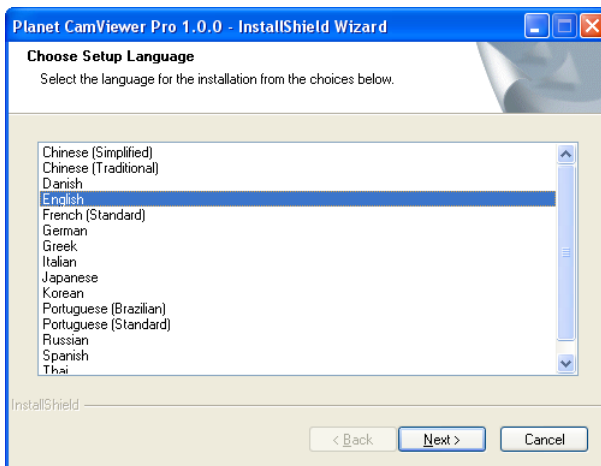
Note: We will charge license for Pro, otherwise it is a 30 days trial version.

Chapter 2. Cam Viewer Installation

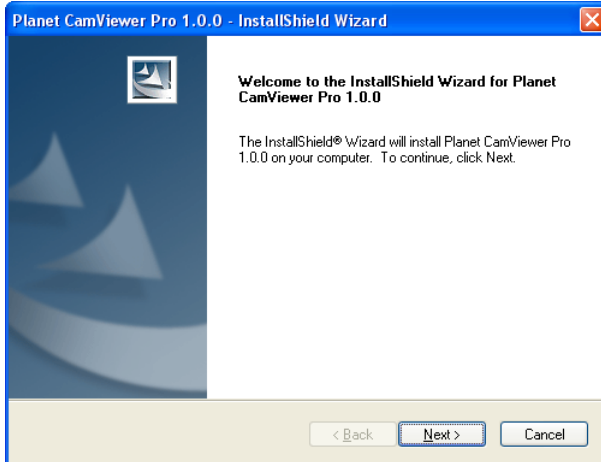
1. Insert the bundled Cam Viewer CD disk into the CD-ROM drive to launch the autorun program. Once completed, a welcome menu screen will appear. Click the "Cam Viewer Pro" hyperlink, the below InstallShield Wizard dialog box will appear.

Note: If the welcome screen does not appear, click "Start" at the taskbar. Then, select "Run" and type "D:\Cam Viewer Pro\setup.exe", assume "D" is your CD-ROM drive.

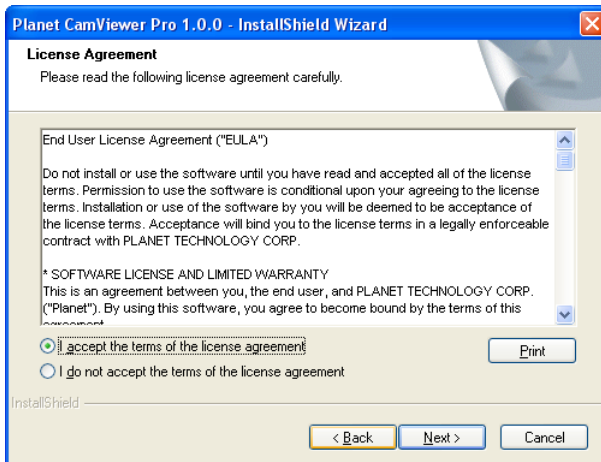
2. Selects the language which you want, Cam Viewer is current including fifteen languages – Chinese (Simplified), Chinese (Traditional), Danish, English, French (Standard), German, Greek, Italian, Japanese, Korean, Portuguese (Brazilian), Portuguese (Standard), Russian, Spanish and Thai. Please select the language and click "Next" to continue.



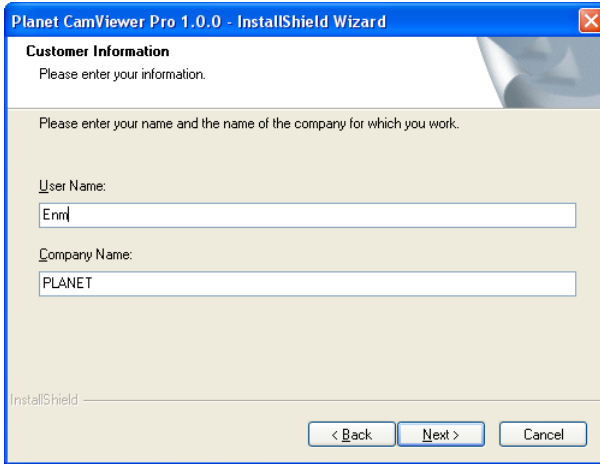
3. The "Welcome to the InstallShield Wizard for Planet Cam Viewer Pro 1.0.0" will display on the screen, please click "Next".



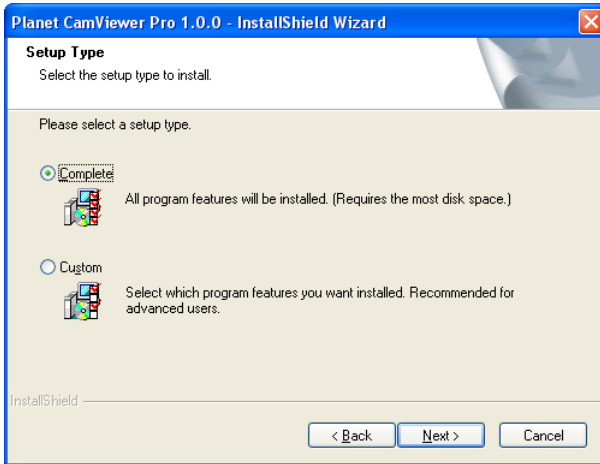
4. Please read the license agreement and then check "I accept the terms of the license agreement" if you are agreed and click "Next" to continue.



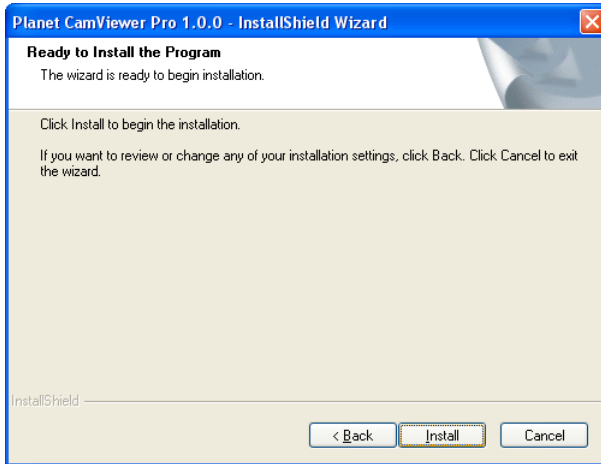
- Please key-in user name and company name for which you want and click "Next" to continue.



- Check the option "Complete - all program features will be installed (Requires the most disk space)" and click "Next".

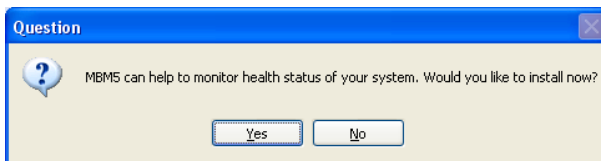


7. "Ready to Install the Program" will appear to prompt you to start the installation. Please click "Install" to start.



8. You may click "No" to finish the Cam Viewer installation or click "Yes" to install the additional utility - MBM5.

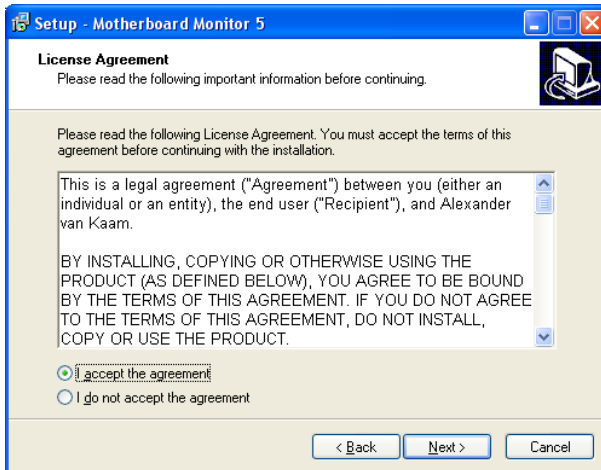
Note: When Cam Viewer works with MBM5 (Motherboard Monitor 5), Cam Viewer will display CPU temperature and fan speed. Please click "No" if you don't need this function and the Cam Viewer installation will be finished. When you click "Yes", please refer to below steps to start the MBM5 installation.



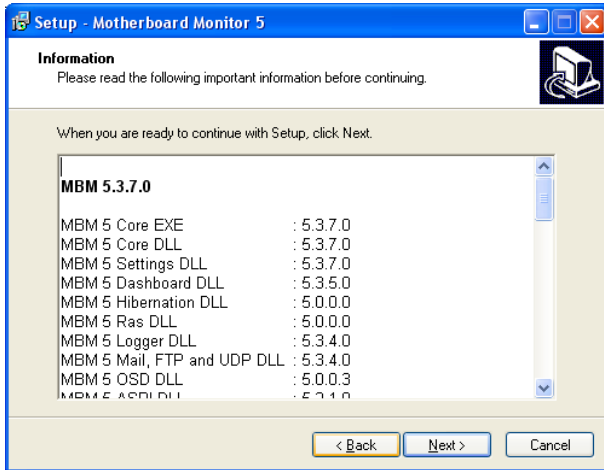
9. The “Welcome to the Motherboard Monitor 5 Setup Wizard” will display on the screen and click “Next”.



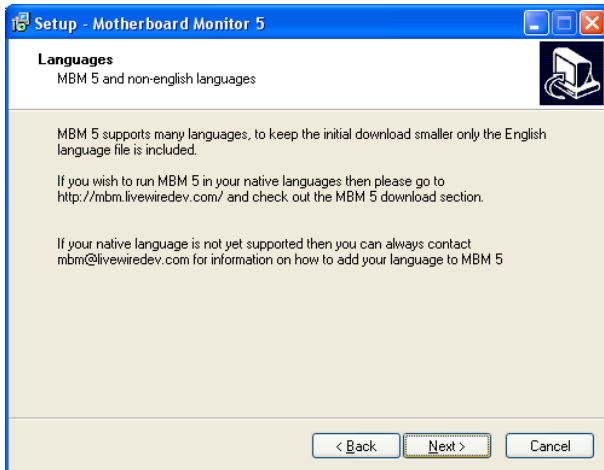
10. Please read the license agreement and then check “I accept the agreement” if you are agreed and click “Next” to continue.



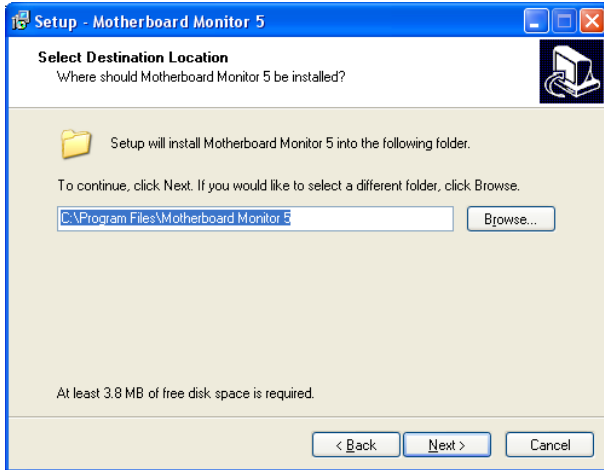
11. Please read the following important information before continuing and click "Next" to continue.



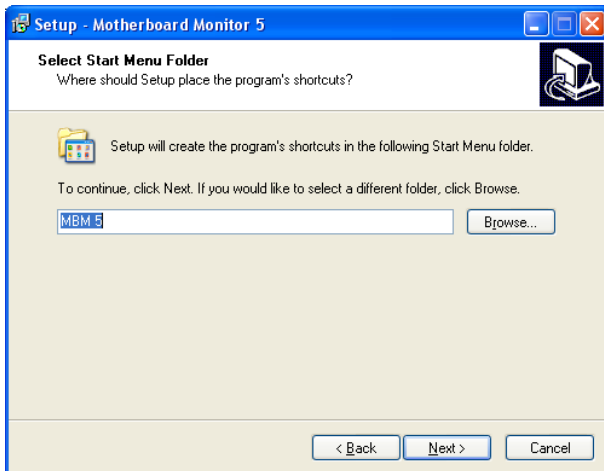
12. Please click "Next" to continue installation.



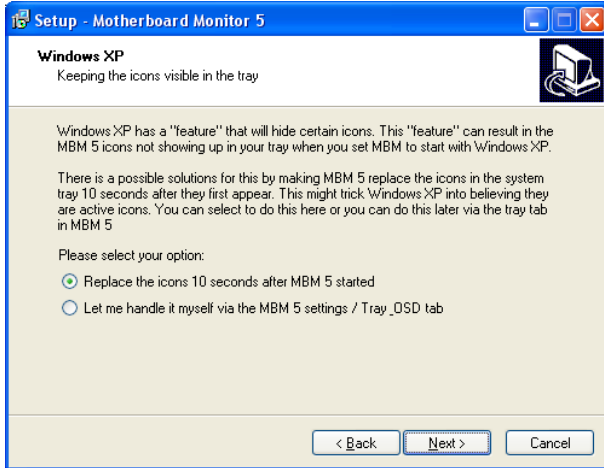
13. Please click "Next" to install with original settings, or you may click "Browse..." button to assign an install folder then press "Next".



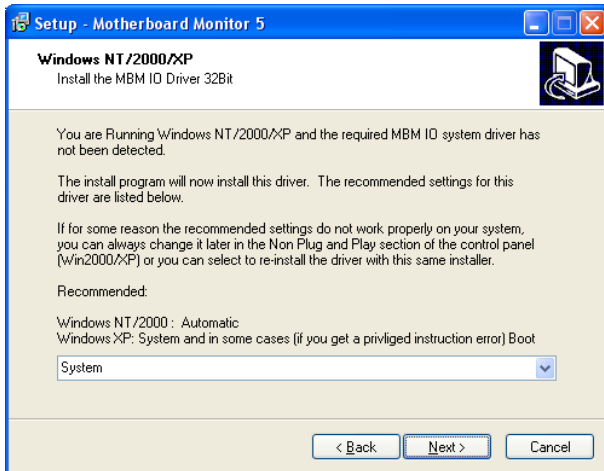
14. Please click "Next" to install with original settings, or you may click "Browse..." button to rename the program's shortcut of Start Menu then press "Next".



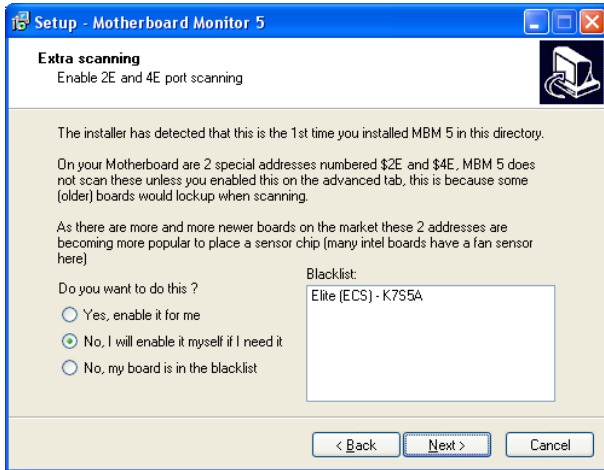
15. Please select "Replace the icons 10 seconds after MBM5 started" and click "Next" to continue installation.



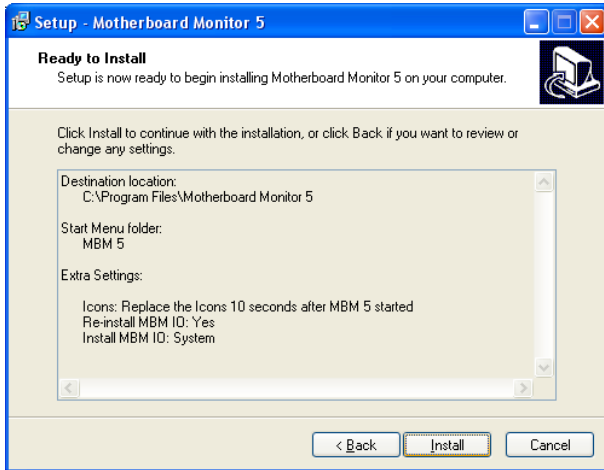
16. Please click "Next" to continue installation.



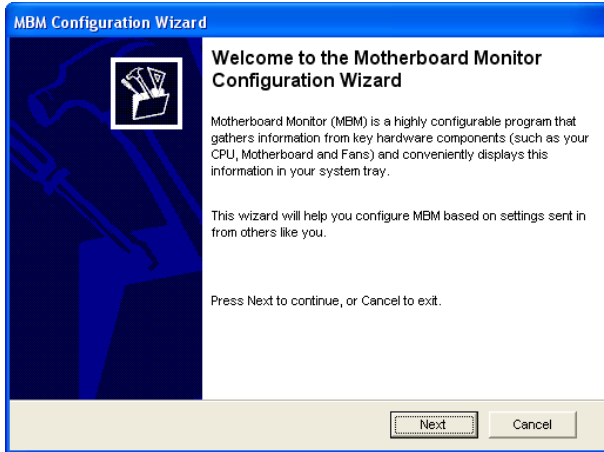
17. According to your motherboard to select correct option and click "Next" to continue.



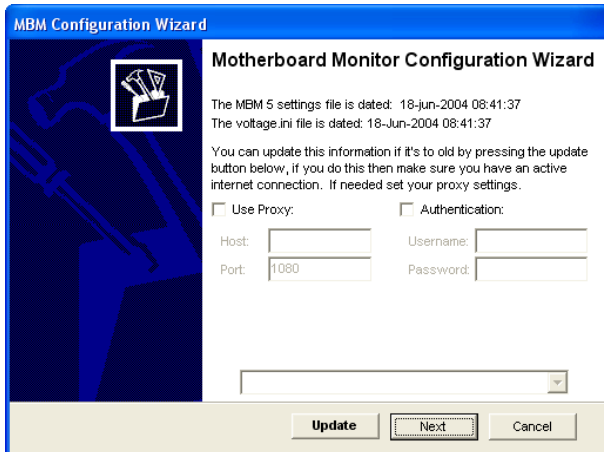
18. When "Ready to Install the Program" will display on the screen and click "Install" to continue.



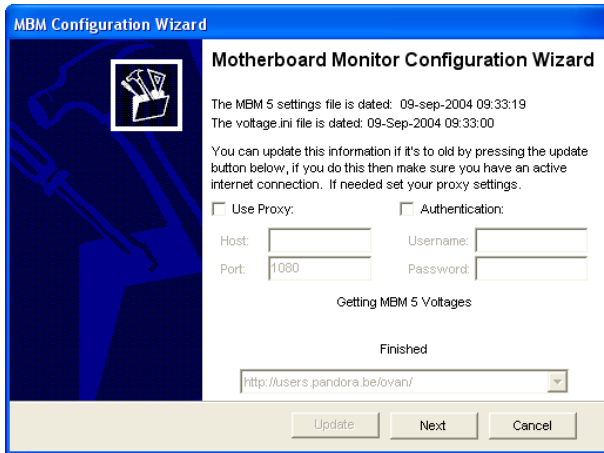
19. The “Welcome to the Motherboard Monitor Configuration Wizard” will display on the screen, please click “Next” to continue.



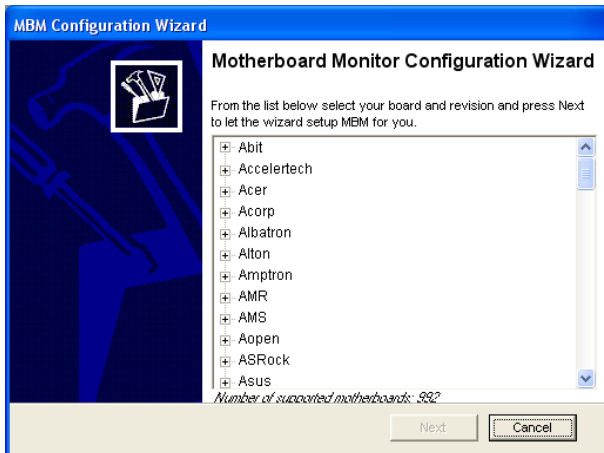
20. The “Motherboard Monitor Configuration Wizard” will display on the screen, please click “Update” to update data. Before update, please make sure your PC is connected to Internet already.



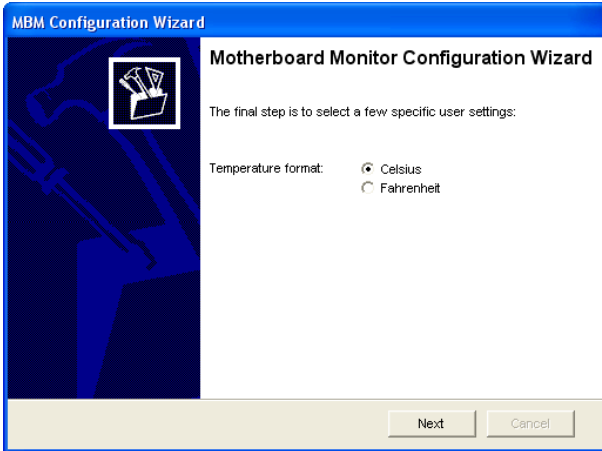
21. Wait a moment, after the program update finish, please click "Next" to continue.



22. Please select your motherboard vendor and model name, then click "Next" to continue



23. Please select temperature format and click "Next" to continue.



24. Please click "Finish" to end the motherboard monitor configuration wizard.



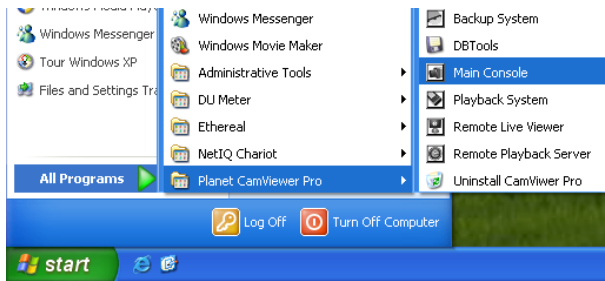
25. Please click "Yes" to restart your computer.



Chapter 3. Import Surveillance Product

Note: Before open the Cam Viewer Pro, please insert USB dongle in the computer first.

To start the Cam Viewer that click on Start > All Program > Planet CamViewer Pro > Main Console



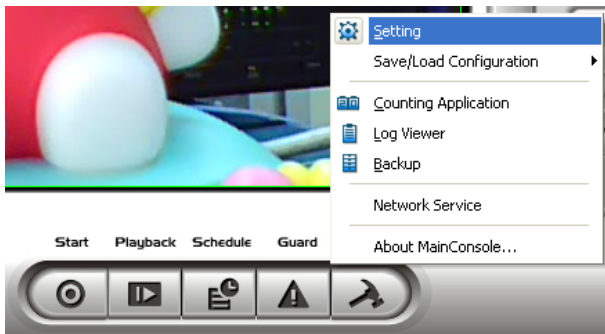
Enter the password you like into the edit box and enter again at the edit of password confirm. And the press "OK".



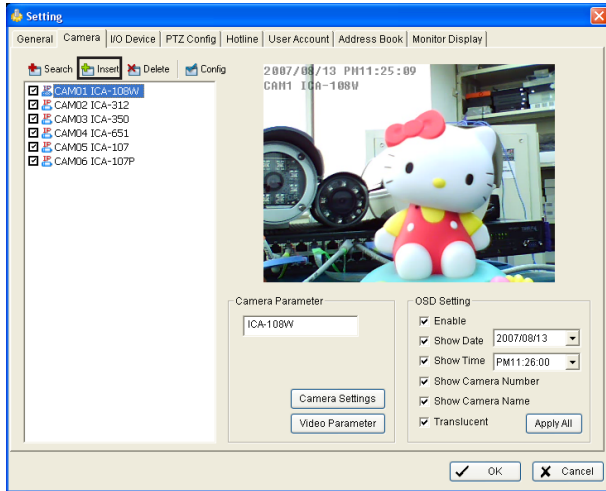
The Main Console will display on the screen.



In Main Console, go to "Config" and click "Setting" to open the Setting dialog box



The Setting window will display on the screen, please go to "Camera" page and click "Insert" for insert IP camera.



The "IP Camera / Video Server Setting" dialog box will display. Please enter the Name, IP Address, User Name and Password, then click "Auto Detect" and "OK" to finish inserted camera procedure.

IP Camera / Video Server Setting

Network

Name: ICA-108W

IP Address: 192 . 168 . 0 . 110 Use DNS

Http Port: 80

User Name: admin

Password:

Protocol: TCP UDP HTTP

Device

Vendor: PLANET

Camera Model: ICA-108W

Camera: 1 2 3 4
 5 6 7 8

Description

Video Codec: MPEG4
Audio Codec: None
Camera: 1, DI: 0, DO: 0

Further Configuration

If you want to configure more detail settings of Cam Viewer, please refer to the user manual in the CD disk.

This page is intentionally left blank