

## Speed Dome Internet Camera Installation Guide



**Step 1:**  
**Take out Speed dome IP Cam from carton**

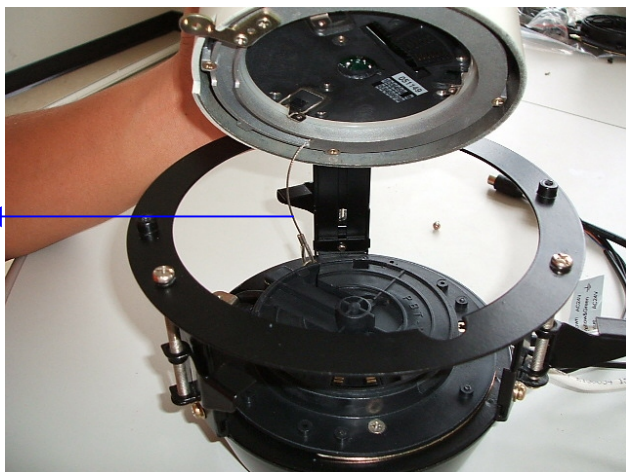
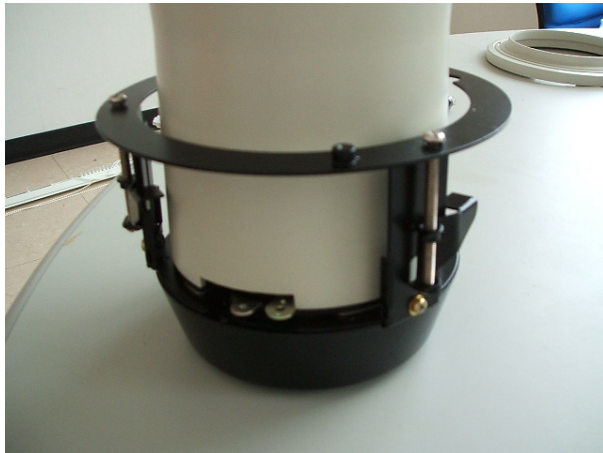


**Step 2:**  
**Use screw drive to take off the decoration ring**



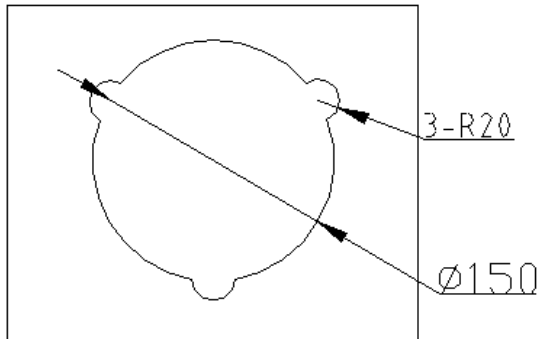


**Step 3:**  
**Use screw driver to take off the screw of embedded mount**



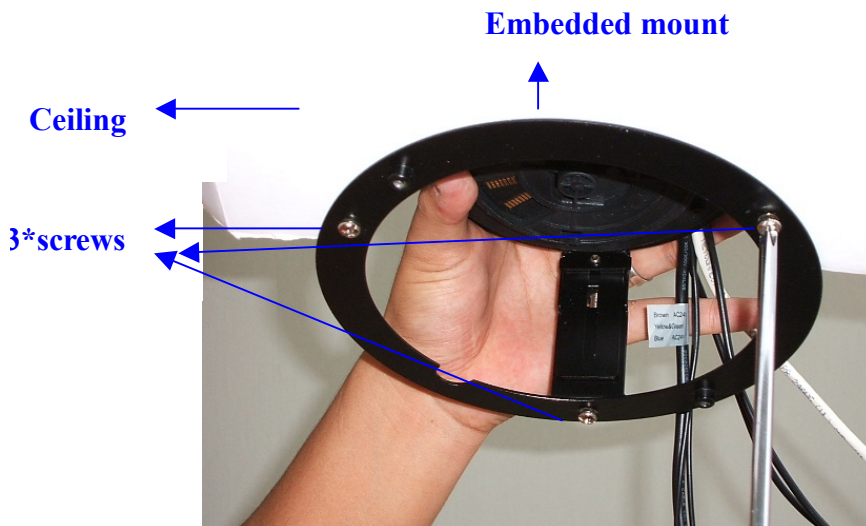
**Safety  
Hook**

**Step 4:**  
**Follow the anti-clockwise direction to take away the Speed dome body from the embedded mount. Take off the safety hook**  
**Note: "Safety hook" is to avoid the IP cam falling down to the floor**



**Step 5:**

**Cut a hole as following in the false ceiling**



**Step 6:**

**Push the embedded mount to the hope, and drive the 3 screws until the embedded ring fits the ceiling tightly and solidly**



**Step 7:**

**Make sure the safety hook is connected, and follow the clockwise direction to close the Speed dome body to the embedded ring**



**Step 8:**

**Use screw drive to drive the screw within Speed dome body and embedded ring**



**Step 8:**

**Use screw drive to fix the decoration ring. Installation procedure finished**