

2 Mega-Pixel 20M IR Vari-Focal Dome IP Camera

ICA-HM132



www.planet.com.tw

Copyright © PLANET Technology Corporation. All rights reserved.

Presentation Outline

Product Overview

Product Features

Management

Application

Comparison



2 Mega-Pixel Dome Type Solution



Outdoor

1.3MP
to
2MP

ICA-HM135

ICA-HM136

Fish-Eye

ICA-HM830

Indoor

1.3MP
to
2MP

ICA-HM130

ICA-HM132

Mini

ICA-HM131/R

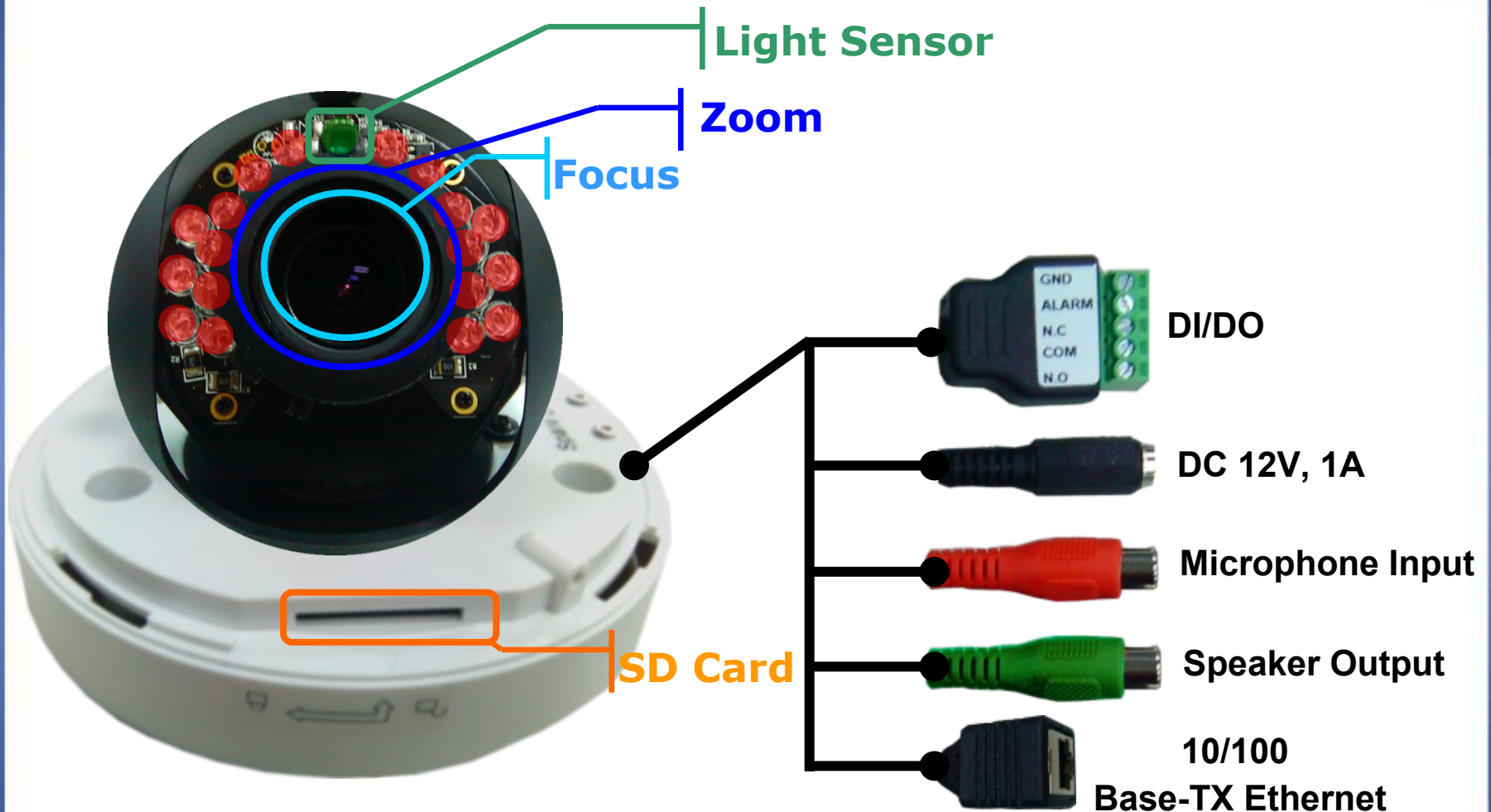
Product Overview

◆ **ICA-HM132**



Product Overview

◆ ICA-HM132



Product Overview

◆ **ICA-HM132**



Product Feature (Hardware)

- ✓ **2 Mega-Pixel CMOS Sensor** with **20** meters IR distance
- ✓ **1/3.2" Vari-Focal 2.7-9mm Lens**
- ✓ **Day and Night** supported with **ICR** (IR-Cut Removable) function
- ✓ **2-Way Audio** function with external microphone and speaker
- ✓ Compliant with **IEEE 802.3af standard PoE** interface
- ✓ **External I/O** trigger for various surveillance applications
- ✓ **SD slot** for save the AVI and JPEG files when event alarm or schedule snapshot

Product Feature (Software)

- ✓ **H.264 / MPEG-4 / M-JPEG** video compression
- ✓ Max. **1600x1200 (UXGA)** Video resolutions
- ✓ **3GPP** for 3G mobile remote applications
- ✓ **Motion Detection** feature can monitor any suspicious movement in specific area
- ✓ **DDNS, PPPoE, Mail** and **FTP** upload supports more alternatives in surveillance network
- ✓ Support **Save-to-NAS(SAMBA)** function
- ✓ **Multi-Language** support: English, Traditional Chinese, Simplified Chinese, France, Russian, Italian, Spanish, German, Portuguese and Polish
- ✓ **Easy configuration** and management via web interface
- ✓ **Cam Viewer 3** - Central management software supported
- ✓ Supports **ONVIF** Standard to Simplify Integration and Enhance Interoperability

Product Feature

- ◆ **Compliant with IEEE-802.3af standard PoE interface**

- ✓ **IEEE802.3af** support makes the camera can be installed anywhere without the need for additional power socket for the IP camera.

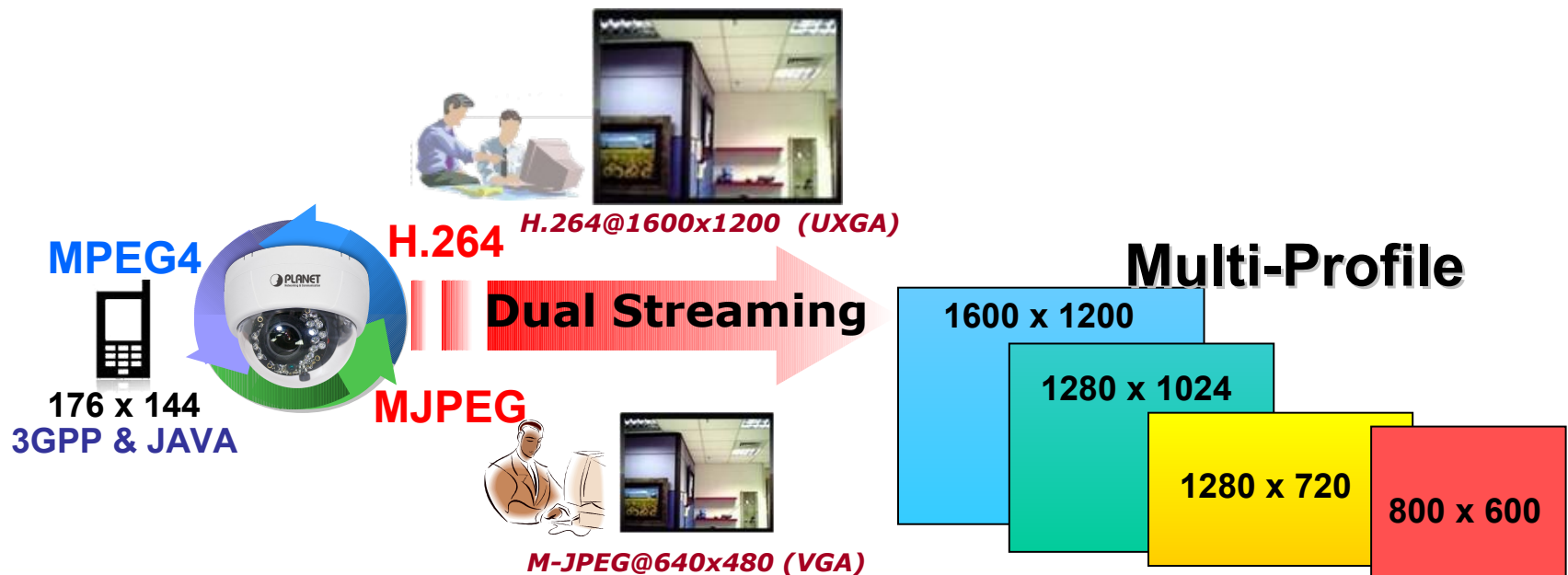
It assist in locating cameras in places where there are no power outlet.



Product Features

◆ Multi-Profile & 3GPP

- ✓ Support **multiple resolutions** and **video compressions** simultaneously can generate different video stream per user's command.
- ✓ User A can get **H.264, UXGA** resolution from ICA-HM132. Yet, at the same time, another user, say User B can have **M-JPEG, VGA** resolution simultaneously.
- ✓ For mobile user, **3GPP** provides the most convenient way of monitoring their offices and houses.

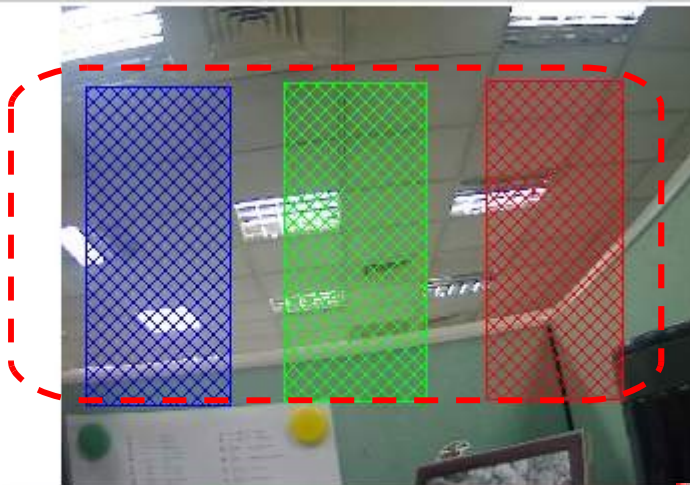


Product Features

◆ 3 motion detection areas / Trigger

- ✓ With the support for motion detection, once there is any moving activity in the specified area, the camera can soon send a message to the manager by email or upload recording/picture onto FTP, SAMBA, Email and SD Card.

Motion Detection



FTP/SAMBA



Email



Digital Output



SD Card



Area Setting:

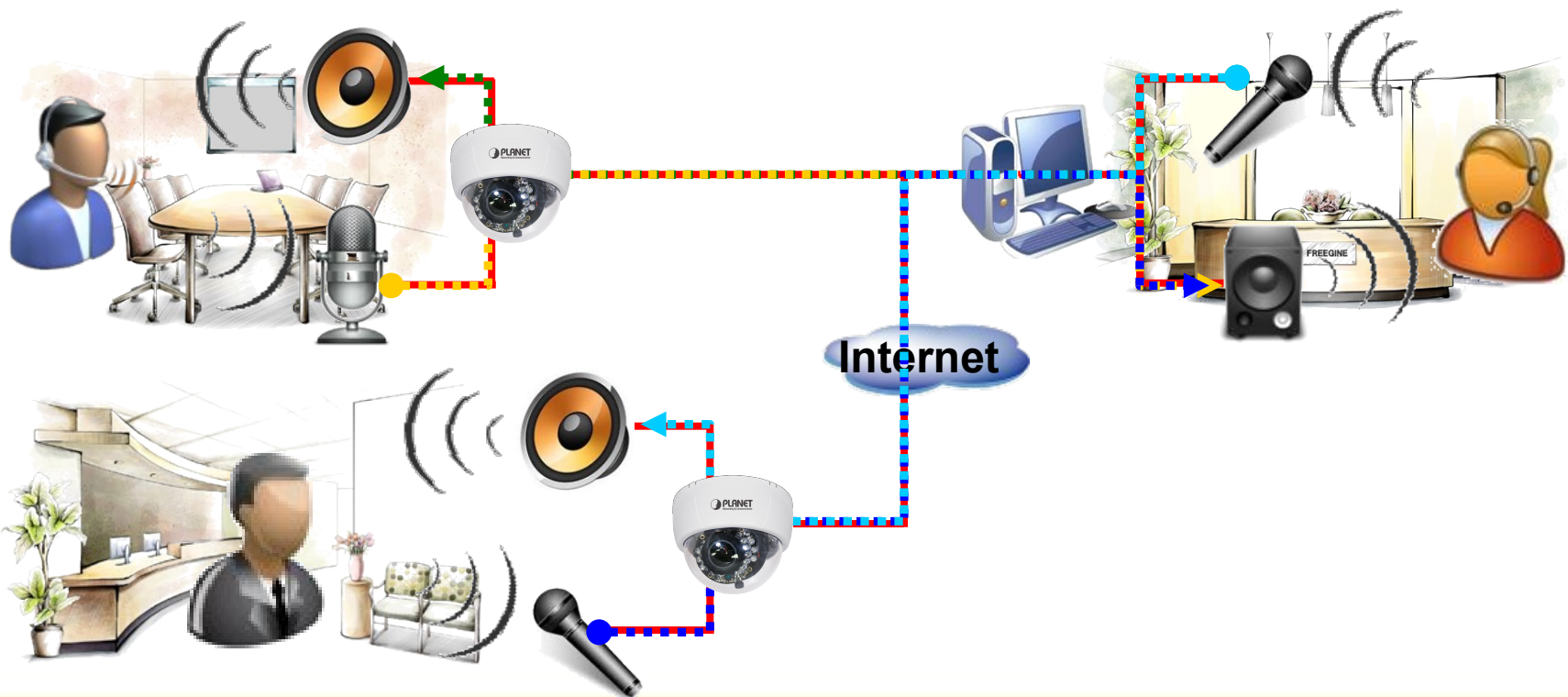
<input type="checkbox"/> Area 1	<input type="checkbox"/> Area 2	<input type="checkbox"/> Area 3
Sensitivity: 5	Sensitivity: 5	Sensitivity: 5

<input type="checkbox"/> Area 1:	<input type="checkbox"/> E-mail	<input type="checkbox"/> FTP	<input type="checkbox"/> Out1	<input type="checkbox"/> Save to SD card	<input type="checkbox"/> Samba
<input type="checkbox"/> Area 2:	<input type="checkbox"/> E-mail	<input type="checkbox"/> FTP	<input type="checkbox"/> Out1	<input type="checkbox"/> Save to SD card	<input type="checkbox"/> Samba
<input type="checkbox"/> Area 3:	<input type="checkbox"/> E-mail	<input type="checkbox"/> FTP	<input type="checkbox"/> Out1	<input type="checkbox"/> Save to SD card	<input type="checkbox"/> Samba

Product Features

◆ Support 2-way Audio

- With **2-Way** audio function, IP camera becomes a bridge that helps users to talk to other people.
- Via two IP cameras, users can easily communicate to each other no matter for a international meeting or a personal chat.



Product Features

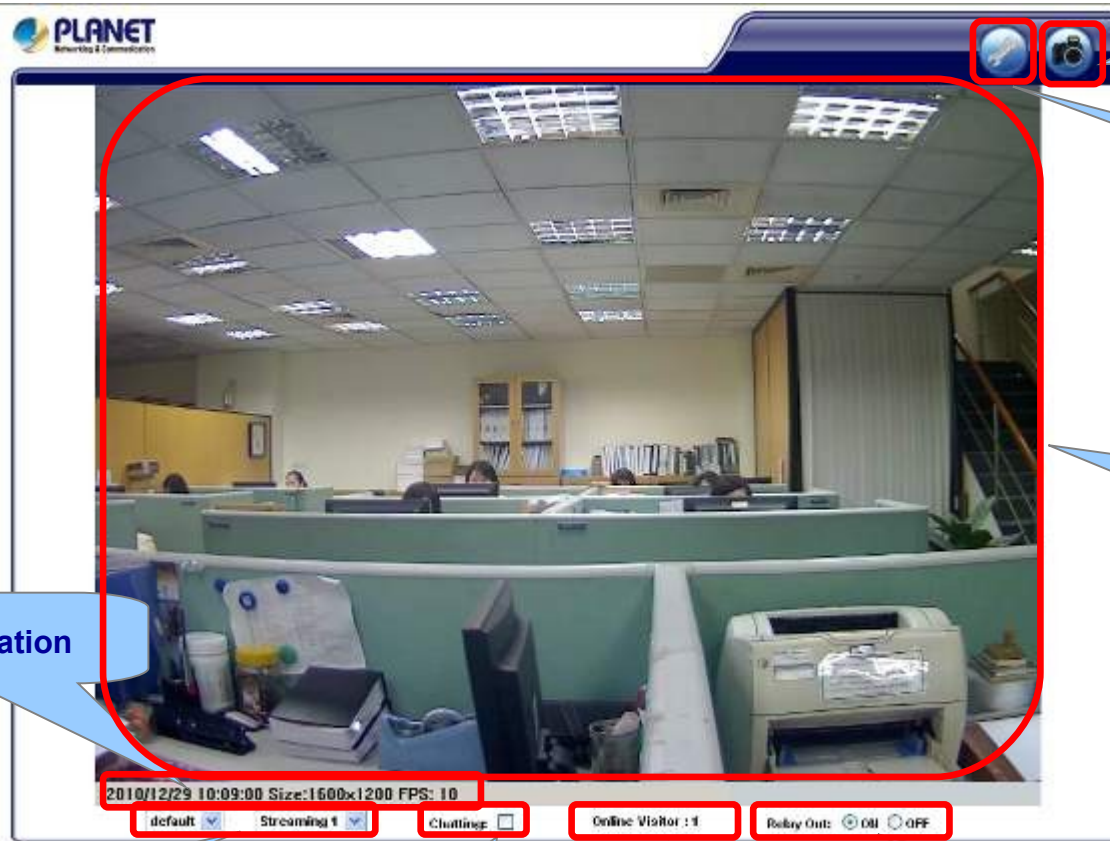
◆ IR-Cut Removable (ICR)

- ✓ With **ICR** features, ICA-HM132 can better video quality in the low light environments.
- ✓ Color image in day time, black & white image in dark place.



Management

◆ View Video & Administration



Snapshot

Configure

View Screen

Video Information

Streaming Protocol

2-way audio

Online Visitor

Control the relay

Management

◆ Web Configure - System

System

- System Information
- User Management
- System Update

Network

- IP Setting
- PPPoE
- DDNS
- Mail & FTP

AV Setting

- Image Setting
- Video Setting
- Audio

Event

- Event Setting
- Schedule
- IO Setting
- Log List

System Information

Server Information

MAC Address: 00:08:4F:FA:11:1B

Server Name: PLANET IP Camera Status Bar

LED Indicator: ON OFF

Language: English 繁體中文 简体中文 French
 Russian Italian Spanish German
 Portuguese Polish

Multi-Language

OSD Setting

Time Stamp: Enabled Disabled

Text: Enabled Disabled

OSD Display Text Edit

Time Setting

Server Time: 2010/12/29 10:39:57 Time Zone: GMT+08:00

Date Format: yymm/dd mm/dd/yy dd/mm/yy

Time Zone: GMT+08:00

NTP:

NTP Server: 198.123.36.132

Update: 6 Hour

Time Shift: 0 Minutes [-1440..1440]

Synchronize with PC's time

Date: 2010/12/29

Time: 10:39:5

Manual

Date: 2010/12/29

Time: 10:39:4

The date and time remain the same

NTP (Network Time Protocol)

Apply

Management

◆ Web Configure - Network

Network Setting

Network

The screenshot displays the PLANET web management interface. The left sidebar contains a 'Network' section with a red border, which includes the following items:

- System Information
- User Management
- System Update
- IP Setting
- PPPoE
- DDNS
- Mail & FTP

The main content area, also highlighted with a red border, is titled 'IP Setting' and contains the following sections:

- IP Assignment**
 - DHCP
 - Static
 - IP Address: 192.168.0.136
 - Subnet Mask: 255.255.255.0
 - Gateway: 192.168.0.1
 - DNS 0: 168.95.1.1
 - DNS 1: 8.8.8.8
- Port Assignment**
 - Web Page Port: 80
 - RTSP Port: 554
 - RTP Start Port: 5000 [1024_9997]
 - RTP End port: 9000 [1028_10000]
- UPnP**
 - UPnP: Enabled Disabled
 - UPnP Port Forwarding: Enabled Disabled
 - External Web Port: 80
 - External RTSP Port: 554
- Multicast Setting**
 - Streaming 1:**
 - IP Address: 234.5.6.78 [224.3.1.0 - 239.255.255.255]
 - Port: 6000 [1 - 65535]
 - TTL: 15 [1 - 255]
 - Streaming 2:**
 - IP Address: 234.5.6.79 [224.3.1.0 - 239.255.255.255]
 - Port: 6001 [1 - 65535]
 - TTL: 15 [1 - 255]

Management

◆ Web Configure – A/V Setting

PLANET
Networking & Communication

System

- System Information
- User Management
- System Update

Network

- IP Setting
- PPPoE
- DDNS
- Mail & FTP

Event

- Image Setting
- A/V Setting**
- Audio
- Event Setting
- Schedule
- I/O Setting
- Log List

Video Setting

- Input Resolution: 1600x1200 @ 15fps
- Video System: NTSC
- TV Output: NTSC (Auto : Based on the Video System)

Streaming 1 Setting

- Basic Mode Advanced Mode
- Resolution: 1600x1200
- Bitrate Control Mode: CBR VBR
- Video Quantitative: 7
- Video Bitrate: 2Mbps
- Video Frame Rate: 15 FPS
- GOP Size: 1 X FPS (GOP=15)
- Video Format: H.264
- RTSP Path: exrtsp://IP_Address/ Audio:G.711

Streaming 2 Setting

- Basic Mode Advanced Mode Close
- Resolution: 640x480
- Quality: Best
- Video Frame Rate: 15 FPS
- Video Format: JPEG
- RTSP Path: v2 exrtsp://IP_Address/v2 Audio:G.711

3GPP Streaming Setting

- Enabled Disabled (Resolution=176x144, FPS=5, Format=MPEG4)
- 3GPP Path: 3g exrtsp://IP_Address/3g Audio:AMR
- exrtsp://IP_Address/3gx No Audio

Annotations:

- A/V Setting** (points to sidebar menu)
- Video Streaming Setting** (points to Streaming 1 and 2 sections)
- H.264/M-JPEG** (points to Video Format)
- 1600 x 1200 @15fps** (points to Resolution and Frame Rate)
- MPEG-4** (points to 3GPP Format)
- 3GPP Streaming Setting** (points to 3GPP section)

Apply

Management

◆ Web Configure - Event



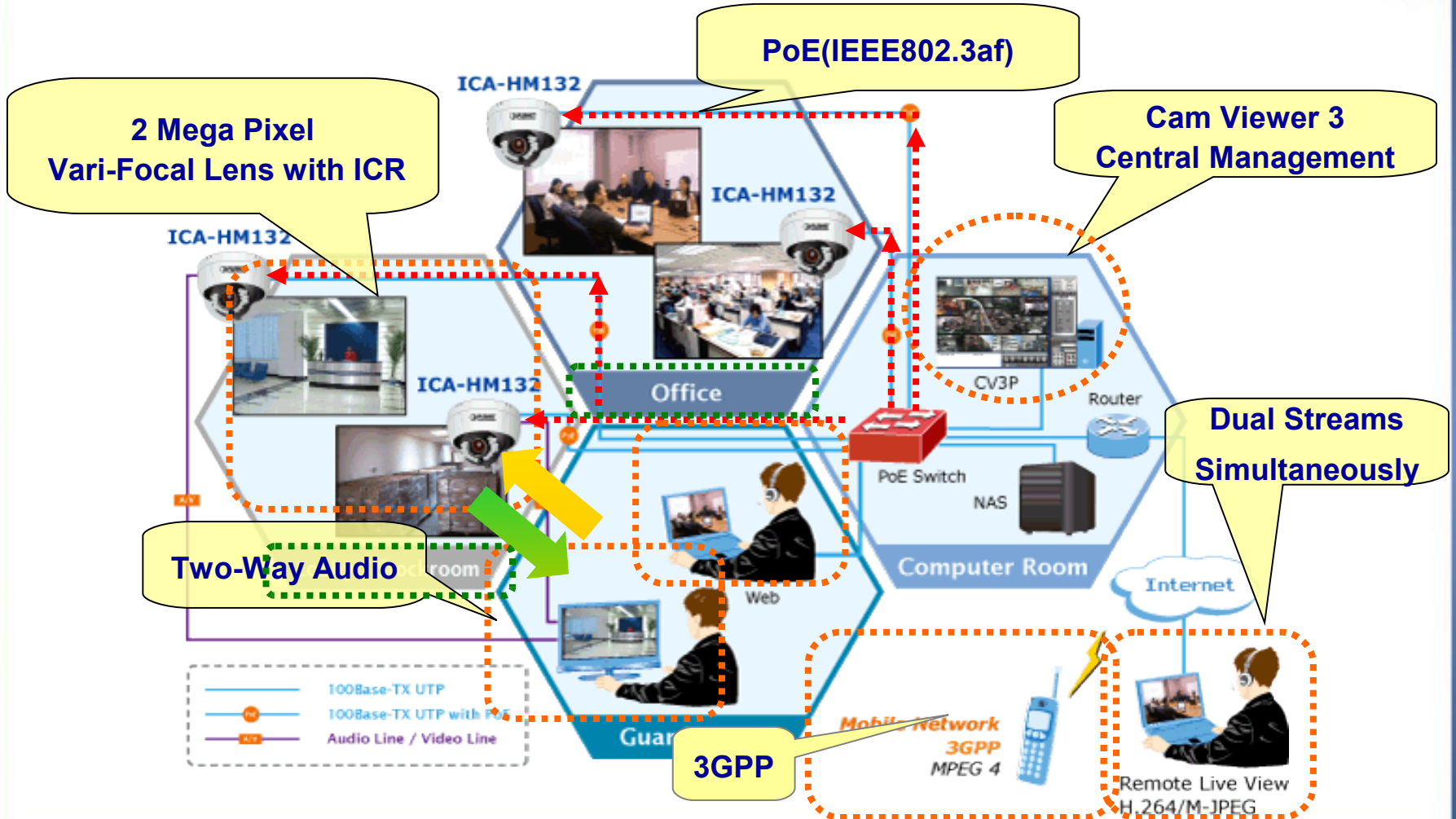
Event

View



Motion Detection Setting

Application

- ◆ Provide various surveillance applications



Product Comparison - Internal

Model	ICA-HM132	ICA-HM130
Features		
Image sensor / size	1/3.2" CMOS	1/4" CMOS
Max. resolution	2MP	1.3MP
Sensibility (Lux)	0 Lux	0 Lux
Lens	f = 2.7-9mm / F1.4	f = 4.3mm / F1.8
IR Distance	20 meter	-
ICR	V	V
Image Compression	H.264 / MPEG-4 / M-JPEG	H.264 / MPEG-4 / M-JPEG
Max. Video resolution	1600 x 1200 (UXGA)	1280 x 1024 (SXGA)
Max. Frames per second	15	15
PoE Interface	IEEE802.3af	IEEE802.3af
DI / DO	1 / 1	1 / 1
Multi-Profile	V	V
2-Way Audio	V	V
Video Out	V	-
SD Storage	V	-
3GPP	V	V

Product Comparison - External

Model	PLANET ICA-HM132	D-link DCS-6113	Vivotek FD8161
Features			
Image sensor / size	1/3.2" CMOS	1/2.7" CMOS	1/3.2" CMOS
Max. resolution	2MP	2MP	2MP
Sensibility (Lux)	0 Lux	0 Lux	0 Lux
Lens	f = 2.7-9mm / F1.4	f = 4.3mm / F2.0	f = 3-9mm / F1.2
IR Distance	20 meter	10 meter	15 meter
ICR	V	V	V
Image Compression	H.264 / MPEG-4 / M-JPEG	H.264 / MPEG-4 / M-JPEG	H.264 / MPEG-4 / M-JPEG
Max. Video resolution	1600 x 1200 (UXGA)	1600 x 1200 (UXGA)	1600 x 1200 (UXGA)
Max. Frames per second	15	15	15
PoE Interface	IEEE802.3af	IEEE802.3af	IEEE802.3af
DI / DO	1 / 1	1 / 1	1 / 1
Multi-Profile	V	V	V
2-Way Audio	V	V	V
Video Out	V	V	V
SD Storage	V	V	V
3GPP	V	-	-

Appendix Sales Target

◆ Target Markets

- ✓ Enterprise / SMB Office
- ✓ IP Surveillance System Integrator
- ✓ Reseller

◆ Target Customers

- ✓ Who buy our Indoor Dome type IP Camera
 - ICA-HM130 / ICA-HM131/R
- ✓ Who buy our Outdoor Dome type IP Camera
 - ICA-HM135 / ICA-HM136
- ✓ Who buy our Analog Dome type Camera
 - CAM-DM33 / CAM-VP38 / CAM-IVP55 / CAM-IVP55V



ACTIVATING IP POWER