

2Mega-Pixel 15M IR Vandal Proof Dome IP Camera **ICA-HM136**



www.planet.com.tw

Copyright © PLANET Technology Corporation. All rights reserved.

Presentation Outline

Product Overview

Product Features

Management

Application

Comparison



2 Mega-Pixel Dome Type Solution

Outdoor



ICA-HM135

1.3MP to **2MP**



ICA-HM136

Indoor



ICA-HM130

1.3MP to **2MP**



ICA-HM131/R



ICA-HM830

Product Overview

◆ Front View of ICA-HM136

IP-66 Weather-Proof

Vandal-Proof

1/3.2" 2 Mega-Pixel
CMOS Sensor

Vari-Focal
2.7~9mm Lens



Infrared Sensor

18 Infrared LED

Product Overview

◆ Connectors of ICA-HM136



DI/DO (1/1)



Speaker Output



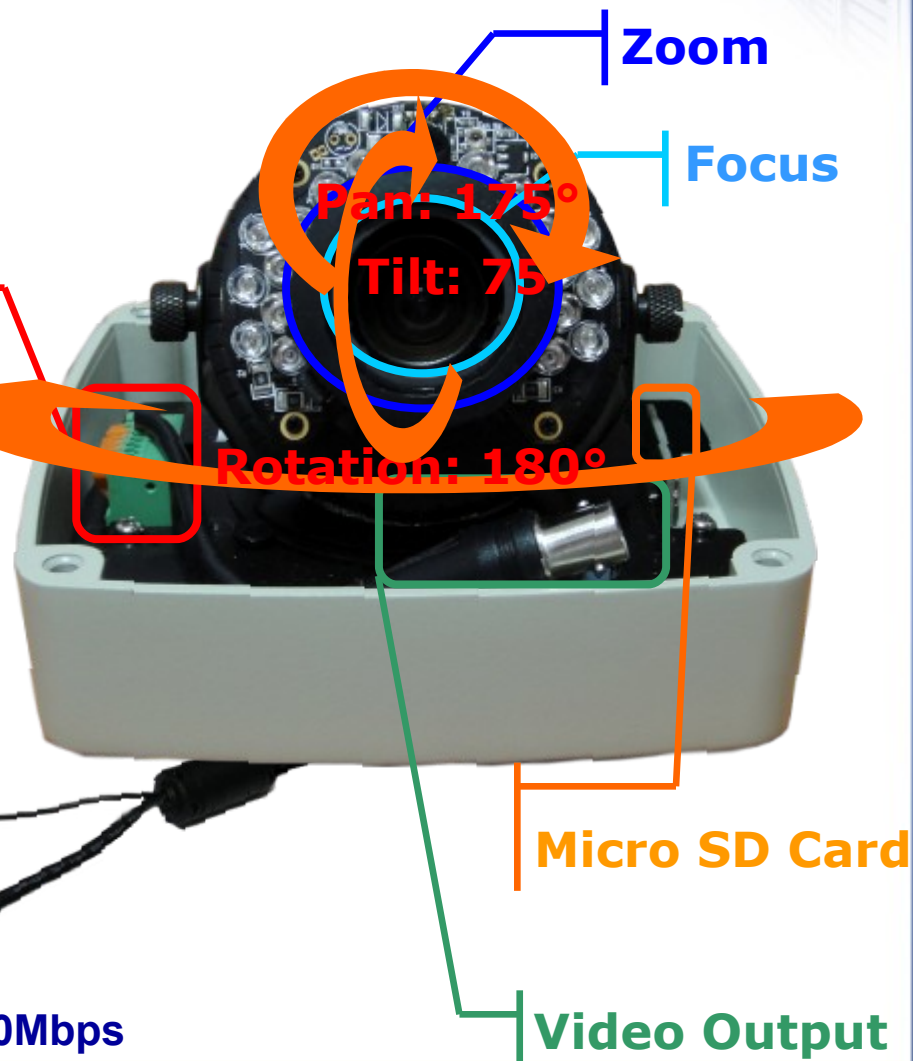
Microphone Input

I/O Terminal

	N.O
	COM
	N.C
	GND
	ALARM_IN
	AUDIO_OUT
	MIC_IN
	GND
	VIDEO_OUT

DC 12V, 1A

RJ-45 LAN 10/100Mbps



Product Feature (Hardware)

- ✓ **2 Mega-Pixel** CMOS Sensor with **15** meters IR distance
- ✓ **1/3.2" Vari-Focal 2.7-9mm** Lens
- ✓ **Day and Night** supported with **ICR** (IR-Cut Removable) function
- ✓ **Vandal-Proof** can shield **400** pounds of impact.
- ✓ **IP-66** outdoor classification for rigorous environment
- ✓ **2-Way Audio** function with external microphone and speaker
- ✓ Compliant with **IEEE 802.3af standard PoE** interface
- ✓ **External I/O** trigger for various surveillance applications
- ✓ **Micro SD slot** for save the AVI and JPEG files when event alarm or schedule snapshot

Product Feature

1/3.2" 2 Mega-Pixel CMOS Sensor
with **Vari-Focal 2.7-9mm Lens**



9mm
View Angle

2.7mm
View Angle

Built-in IR LED can visible distance 15 meters
Day and Night supported with **ICR**



15 meters

Vandal-Proof shield 400 pounds
IP-66 Weather Proof



2-Way Audio function with
external microphone and speaker



Product Feature

◆ Compliant with IEEE-802.3af standard PoE interface

- ✓ **IEEE802.3af** support makes the camera can be installed anywhere without the need for additional power socket for the IP camera.

It assist in locating cameras in places where there are no power outlet.



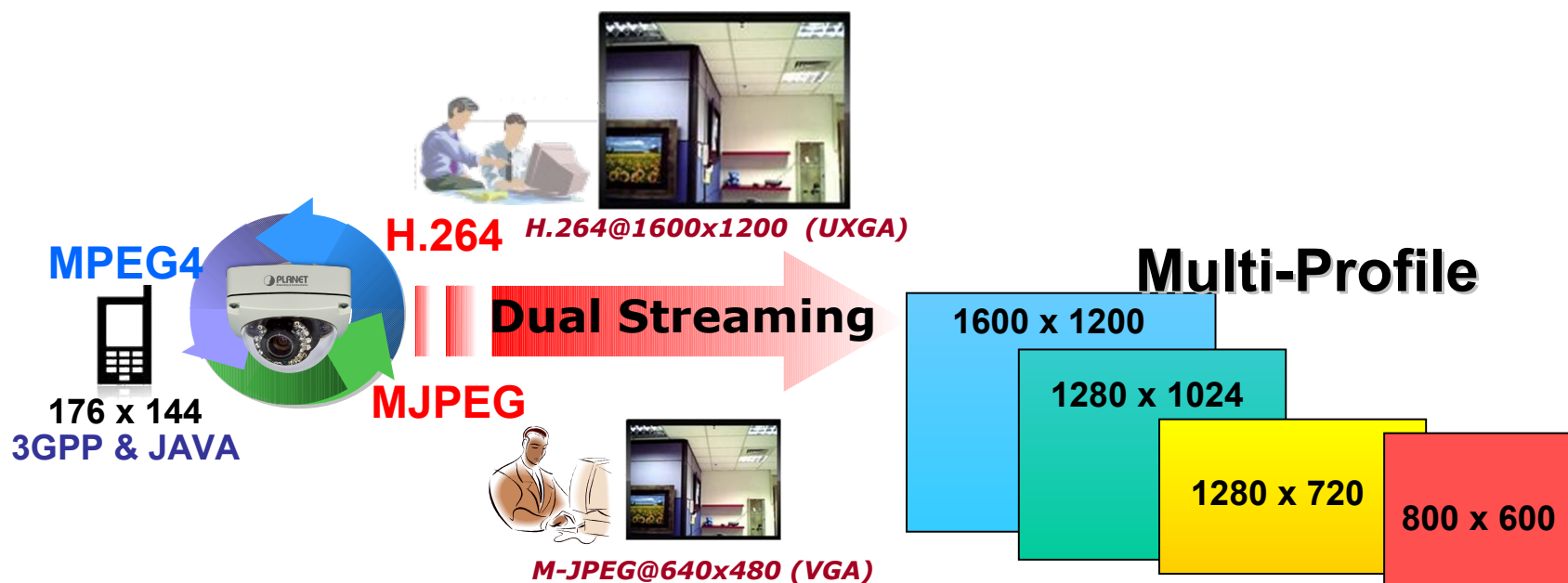
Product Feature (Software)

- ✓ **H.264** / **MPEG-4** / **M-JPEG** video compression
- ✓ **Max. 1600x1200 (UXGA)** Video resolutions
- ✓ **3GPP** for 3G mobile remote applications
- ✓ **Motion Detection** feature can monitor any suspicious movement in specific area
- ✓ **DDNS, PPPoE, Mail** and **FTP** upload supports more alternatives in surveillance network
- ✓ **Multi-Language** support: English, Traditional Chinese, Simplified Chinese, France, Russian, Italian, Spanish, German, Portuguese and Polish
- ✓ **Easy configuration** and management via web interface
- ✓ **Cam Viewer 3** - Central management software supported
- ✓ Supports **ONVIF** Standard to Simplify Integration and Enhance Interoperability

Product Features

◆ Multi-Profile & 3GPP

- ✓ Support **multiple resolutions** and **video compressions** simultaneously can generate different video stream per user's command.
- ✓ User A can get **H.264, UXGA** resolution from ICA-HM136. Yet, at the same time, another user, say User B can have **M-JPEG, VGA** resolution simultaneously.
- ✓ For mobile user, **3GPP** provides the most convenient way of monitoring their offices and houses.

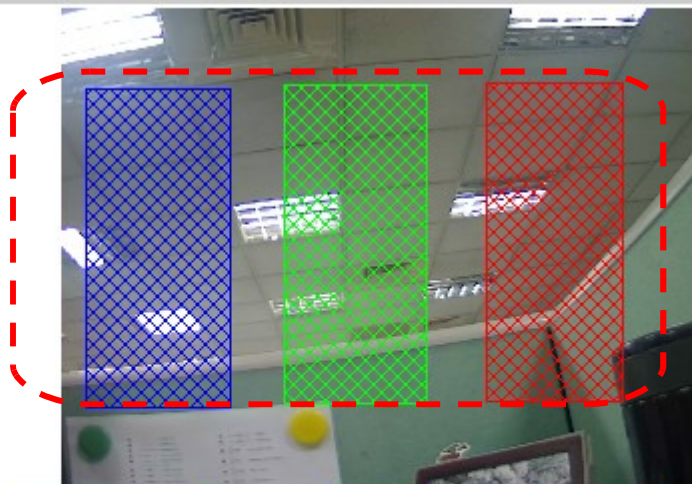


Product Features

◆ 3 motion detection areas / Trigger

- ✓ With the support for motion detection, once there is any moving activity in the specified area, the camera can soon send a message to the manager by email or upload recording/picture onto FTP, Email and Micro SD Card.

Motion Detection



Area Setting:

Area 1	Area 2	Area 3
Sensitivity: 5	Sensitivity: 5	Sensitivity: 5

- | | | | | |
|----------------------------------|---------------------------------|------------------------------|-------------------------------|--|
| <input type="checkbox"/> Area 1: | <input type="checkbox"/> E-mail | <input type="checkbox"/> FTP | <input type="checkbox"/> Out1 | <input type="checkbox"/> Save to SD card |
| <input type="checkbox"/> Area 2: | <input type="checkbox"/> E-mail | <input type="checkbox"/> FTP | <input type="checkbox"/> Out1 | <input type="checkbox"/> Save to SD card |
| <input type="checkbox"/> Area 3: | <input type="checkbox"/> E-mail | <input type="checkbox"/> FTP | <input type="checkbox"/> Out1 | <input type="checkbox"/> Save to SD card |

FTP



Email



Digital Output



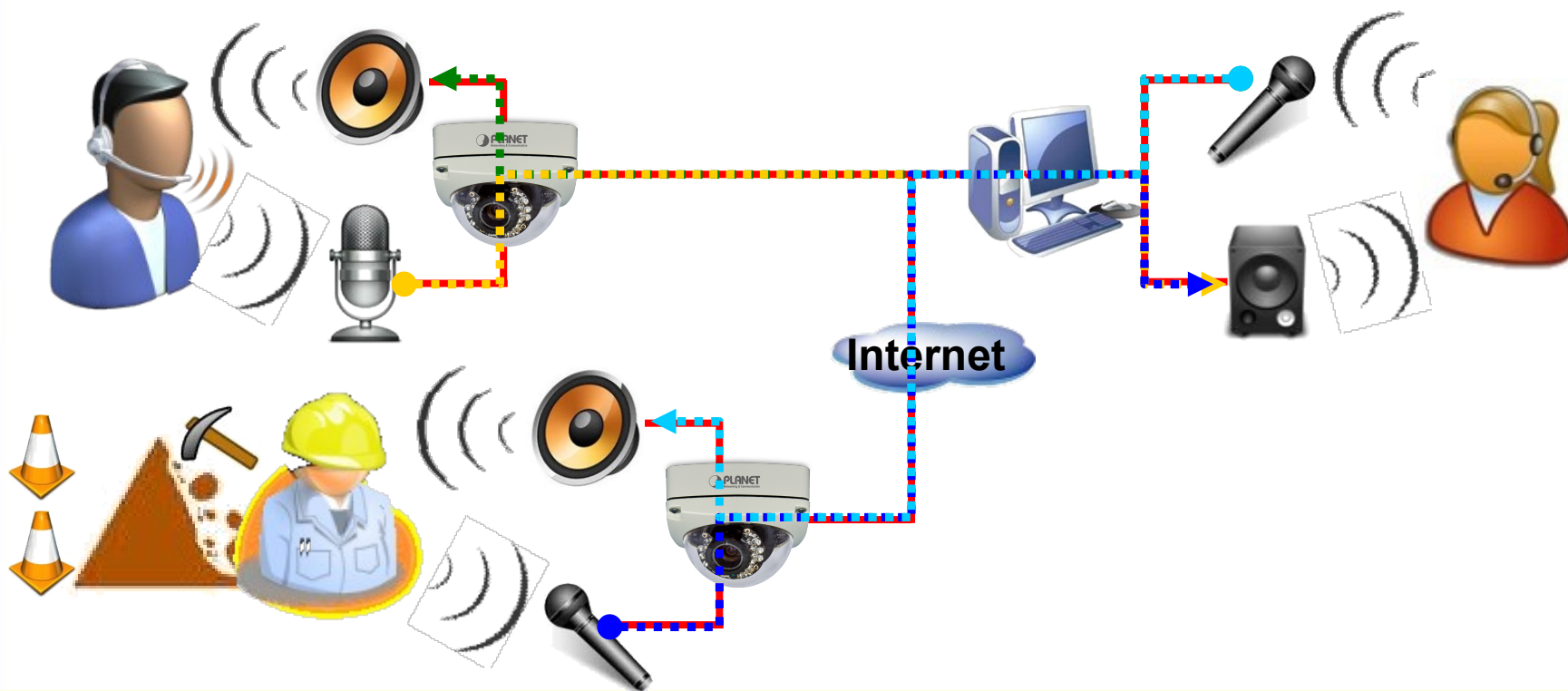
MicroSD Card



Product Features

◆ Support 2-way Audio

- With **2-Way** audio function, IP camera becomes a bridge that helps users to talk to other people.
- Via two IP cameras, users can easily communicate to each other no matter for a international meeting or a personal chat.



Product Features

◆ IR-Cut Removable (ICR)

- ✓ With **ICR** features, ICA-HM136 can better video quality in the low light environments.
- ✓ Color image in day time, black & white image in dark place.



Management

◆ View Video & Administration

The screenshot displays the PLANET video management interface. At the top left is the PLANET logo. The main area shows a live video feed of an office interior, outlined with a red border. In the top right corner of the interface, there are two icons: a globe (labeled 'Snapshot') and a camera (labeled 'Configure'). Below the video feed, there is a status bar showing the date and time '2010/12/29 10:09:00', the video size 'Size:1600x1200', and the frame rate 'FPS: 10'. Below the status bar, there are several controls: a dropdown menu for 'default' (labeled 'Streaming Protocol'), a dropdown menu for 'Streaming 1' (labeled '2-way audio'), a checkbox for 'Chattering' (labeled '2-way audio'), a text box for 'Online Visitor : 1' (labeled 'Online Visitor'), and a radio button for 'Relay Out: ON' (labeled 'Control the relay').

PLANET
Networking & Communication

Snapshot

Configure

View Screen

Video Information

2010/12/29 10:09:00 Size:1600x1200 FPS: 10

default Streaming 1 Chattering Online Visitor : 1 Relay Out: ON OFF

Streaming Protocol

2-way audio

Online Visitor

Control the relay

Management

◆ Web Configure - System

The screenshot displays the PLANET Web Configure interface. On the left, a sidebar menu is organized into five categories, each highlighted with a red box and a blue callout bubble:

- System**: Includes System Information, User Management, and System Update.
- Network**: Includes IP Setting, PPPoE, DDNS, and Mail & FTP.
- AV Setting**: Includes Image Setting, Video Setting, and Audio.
- Event**: Includes Event Setting, Schedule, MD Setting, and Log List.

The main content area is titled "System Information" and contains several configuration sections:

- Server Information**: Includes MAC Address (00:00:0F:00:00:00), Server Name (PLANET IP Camera), and a checkbox for Status Bar.
- LED Indicator**: Includes a checkbox for ON/OFF.
- Language**: A section highlighted with a red box containing radio buttons for English, 繁體中文, 简体中文, French, Russian, Italian, Spanish, German, Portuguese, and Polish. A blue callout bubble labeled "Multi-Language" points to this section.
- OSD Setting**: Includes Time Stamp (Enabled/Disabled) and Text (Enabled/Disabled) options.
- Time Setting**: Includes Server Time (2010/12/29 10:39:57), Time Zone (GMT+08:00), Date Format (yy/mm/dd, mm/dd/yy, dd/mm/yy), and Time Zone (GMT+08:00).
- NTP**: A section highlighted with a red box containing radio buttons for NTP and Synchronize with PC's time. The NTP section includes fields for NTP Server (198.123.30.132), Update (Hour), and Time Shift (0 Minutes). A blue callout bubble labeled "NTP (Network Time Protocol)" points to this section.
- Synchronize with PC's time**: Includes Date (2010/12/29) and Time (10:35:5) fields.
- Manual**: Includes Date (2010/12/29) and Time (10:35:4) fields.
- The date and time remain the same**: A checkbox option.

An "Apply" button is located at the bottom right of the configuration area.

Management

◆ Web Configure - Network

Network Setting

Network

PLANET
Networking & Communication

System

- System Information
- User Management
- System Update

Network

- IP Setting
- PPPoE
- DDNS
- Mail & FTP

A/V Setting

- Image Setting
- Video Setting
- Audio

Event

- Event Setting
- Schedule
- I/O Setting
- Log List
- SD Card

IP Setting

IP Assignment

☐ DHCP
☒ Static

IP Address: 192.168.0.136
Subnet Mask: 255.255.255.0
Gateway: 192.168.0.1
DNS 0: 168.95.1.1
DNS 1: 8.8.8.8

Port Assignment

Web Page Port: 80
RTSP Port: 554
RTP Start Port: 5000 [1024..9997]
RTP End port: 9000 [1028..10000]

UPnP

UPnP: ☒ Enabled ☐ Disabled
UPnP Port Forwarding: ☐ Enabled ☒ Disabled
External Web Port: 80
External RTSP Port: 554

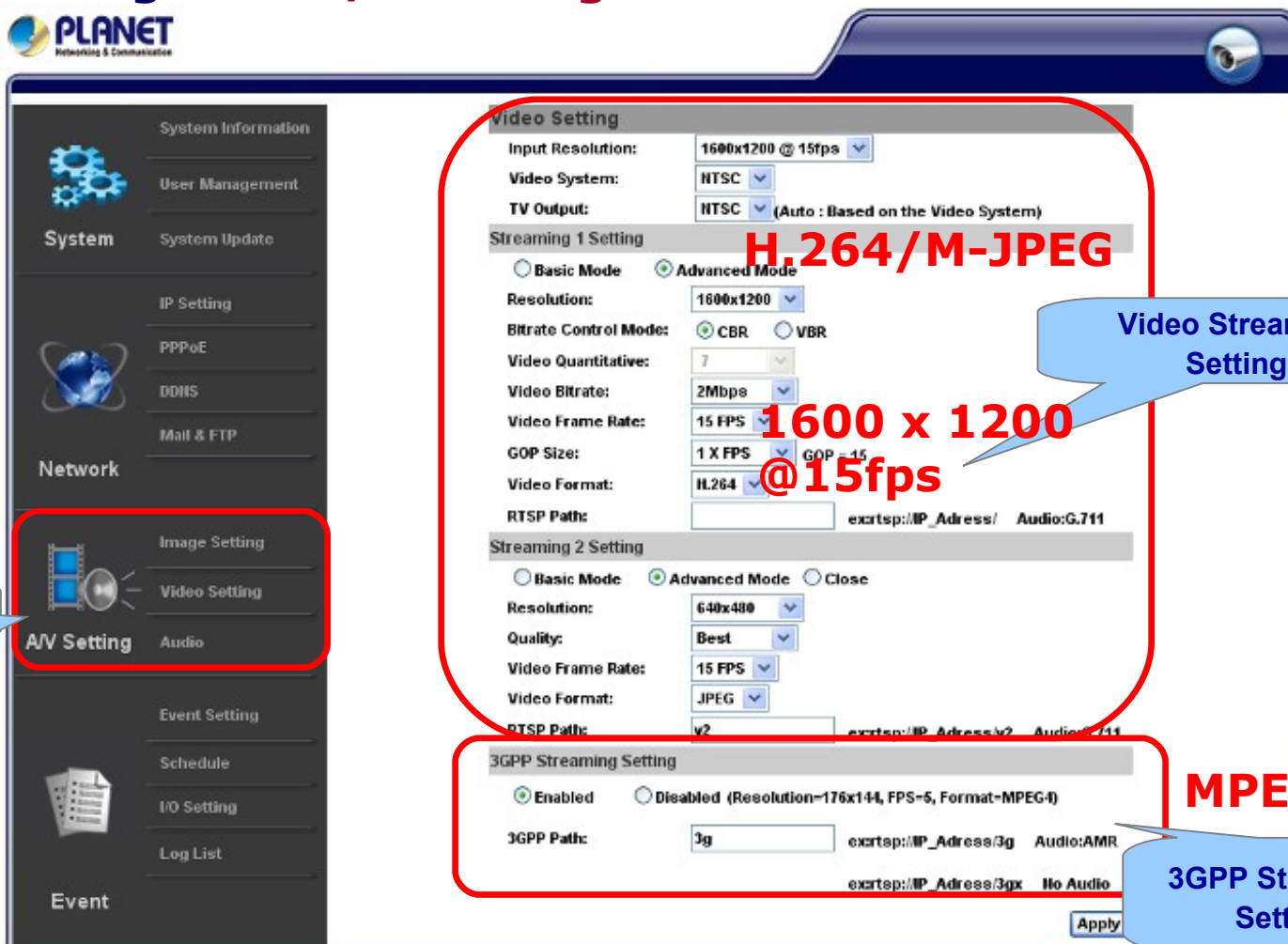
Multicast Setting

Streaming 1:
IP Address: 234.5.6.78 [224.3.1.0 ~ 239.255.255.255]
Port: 6000 [1 ~ 65535]
TTL: 15 [1 ~ 255]

Streaming 2:
IP Address: 234.5.6.79 [224.3.1.0 ~ 239.255.255.255]
Port: 6001 [1 ~ 65535]
TTL: 15 [1 ~ 255]

Management

◆ Web Configure – A/V Setting

System

- System Information
- User Management
- System Update

Network

- IP Setting
- PPPoE
- DDNS
- Mail & FTP

Event

- Event Setting
- Schedule
- I/O Setting
- Log List

Image Setting

- Video Setting
- Audio

Video Setting

Input Resolution: 1600x1200 @ 15fps

Video System: NTSC

TV Output: NTSC (Auto : Based on the Video System)

Streaming 1 Setting

☐ Basic Mode ☒ Advanced Mode

Resolution: 1600x1200

Bitrate Control Mode: ☒ CBR ☐ VBR

Video Quantitative: 7

Video Bitrate: 2Mbps

Video Frame Rate: 15 FPS

GOP Size: 1 X FPS

Video Format: H.264

RTSP Path: exrtsp://IP_Address/ Audio:G.711

Streaming 2 Setting

☐ Basic Mode ☒ Advanced Mode ☐ Close

Resolution: 640x480

Quality: Best

Video Frame Rate: 15 FPS

Video Format: JPEG

RTSP Path: v2 exrtsp://IP_Address/v2 Audio:G.711

3GPP Streaming Setting

☒ Enabled ☐ Disabled (Resolution=176x144, FPS=5, Format=MPEG4)

3GPP Path: 3g exrtsp://IP_Address/3g Audio:AMR

exrtsp://IP_Address/3gx No Audio

Apply

H.264/M-JPEG

Video Streaming Setting

1600 x 1200 @15fps

MPEG-4

3GPP Streaming Setting

Management

◆ Web Configure - Event



Event Setting

Motion Detection

Test

Area Settings:

	Area 1	Area 2	Area 3
Sensitivity:	5	5	5
<input type="checkbox"/> Area 1:	<input type="checkbox"/> E-mail <input type="checkbox"/> FTP <input type="checkbox"/> Out1 <input type="checkbox"/> Save to SD card		
<input type="checkbox"/> Area 2:	<input type="checkbox"/> E-mail <input type="checkbox"/> FTP <input type="checkbox"/> Out1 <input type="checkbox"/> Save to SD card		
<input type="checkbox"/> Area 3:	<input type="checkbox"/> E-mail <input type="checkbox"/> FTP <input type="checkbox"/> Out1 <input type="checkbox"/> Save to SD card		

Subject: PLANET IP Camera Warning!

Interval: 10 sec a period of time between every two motions detected

☐ Based on the schedule

Record File

File Format: AVI File(with Record Time Setting)

Record Time Setting

Pre Alarm: 5 sec Post Alarm: 5 sec

Network Dis-connected

Dis-connected: ☐ Save to SD card

Network IP Check

IP Check: ☐ Enabled ☒ Disabled

IP Address: www.google.com

Interval: 30 sec

IP Check: ☐ Save to SD card

Apply

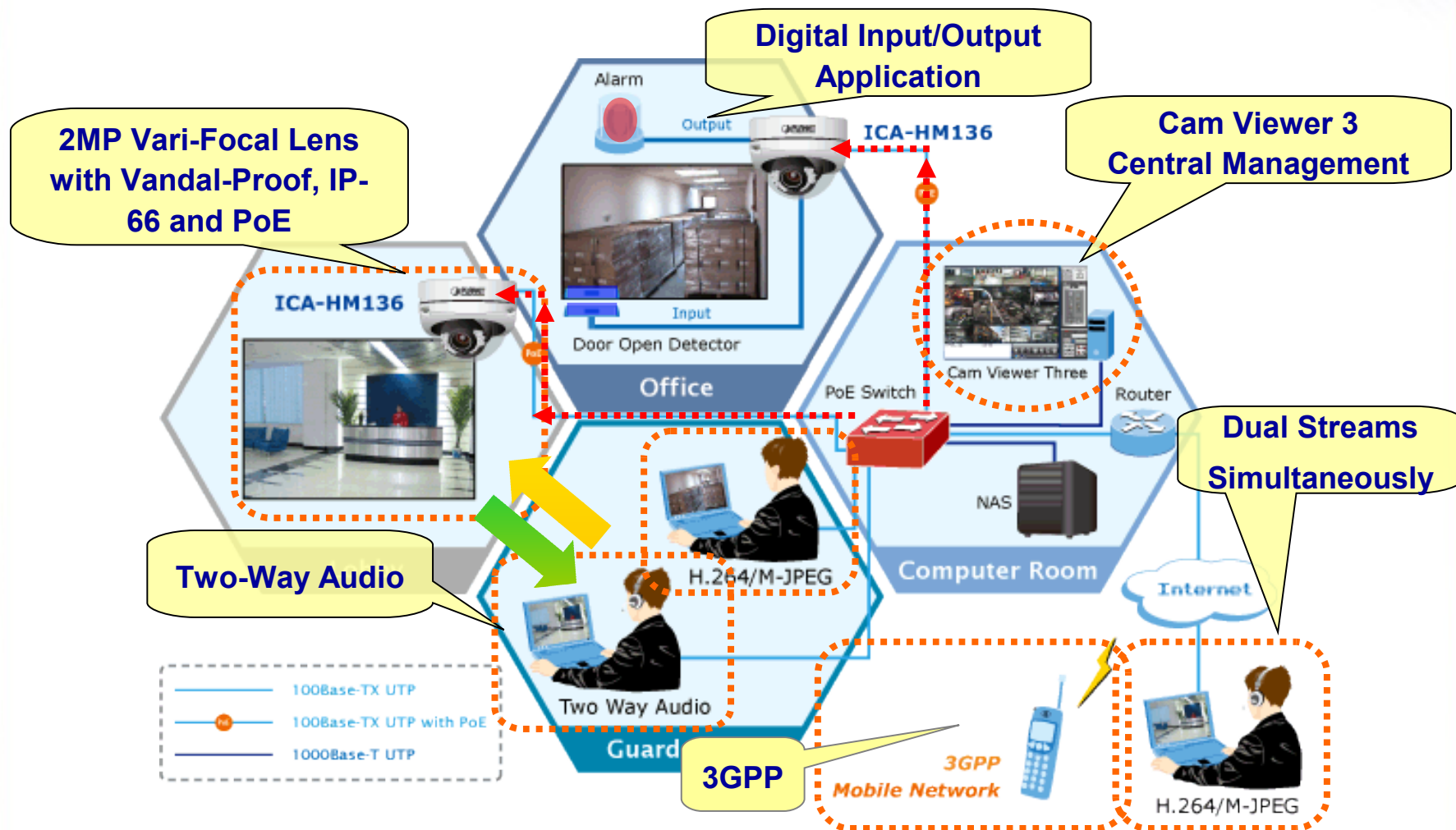
Event

View



Motion Detection
Setting

Application



◆ Provide various surveillance applications



Product Comparison

Model	ICA-HM136	ICA-HM135
Features		
Image sensor / size	1/3.2" CMOS	1/4" CMOS
Max. resolution	2.0 Mega	1.3 Mega
Sensibility (Lux)	0 Lux	0 Lux
Lens	f = 2.7-9mm / F1.4	f = 2.7-9mm / F2.0
IR Distance	15 meter	15 meter
ICR	V	V
Image Compression	H.264 / MPEG-4 / M-JPEG	H.264 / MPEG-4 / M-JPEG
Max. Video resolution	1600 x 1200 (UXGA)	1280 x 1024 (SXGA)
Max. Frames per second	15	15
PoE Interface	IEEE802.3af	IEEE802.3af
DI / DO	1 / 1	1 / 1
Multi-Profile	V	V
2-Way Audio	V	V
Video Out	V	-
Micro-SD Storage	V	-
3GPP	V	V
IP rating	IP-66	IP-66

Product Comparison

Model	PLANET ICA-HM136	Vivotek IP8361
Features		
Image sensor / size	1/3.2" CMOS	1/3.2" CMOS
Max. resolution	2.0 Mega	2.0 Mega
Sensibility (Lux)	0 Lux	0 Lux
Lens	f = 2.7-9mm / F1.4	f = 3-9mm / F1.2
IR Distance	15 meter	15 meter
ICR	V	V
Image Compression	H.264 / MPEG-4 / M-JPEG	H.264 / MPEG-4 / M-JPEG
Max. Video resolution	1600 x 1200 (UXGA)	1600 x 1200 (UXGA)
Max. Frames per second	15	15
PoE Interface	IEEE802.3af	IEEE802.3af
DI / DO	1 / 1	1 / 1
Multi-Profile	V	V
2-Way Audio	V	V
Video Out	V	V
Micro-SD Storage	V	V
3GPP	V	-
IP rating	IP-66	IP-66

Appendix Sales Target

◆ Target Markets

- ✓ Enterprise / SMB Office
- ✓ IP Surveillance System Integrator
- ✓ Reseller

◆ Target Customers

- ✓ Who buy our Analog Dome type Camera
 - CAM-IVP55 / CAM-IVP55V
- ✓ Who buy our Outdoor Dome type IP Camera
 - ICA-HM135
- ✓ Who buy our Indoor Dome type IP Camera
 - ICA-HM130 / ICA-HM131/R



ACTIVATING IP POWER