

Trademarks

Copyright © PLANET Technology Corp. 2003.

Contents subject to revision without prior notice.

PLANET is a registered trademark of PLANET Technology Corp. All other trademarks belong to their respective owners.

Disclaimer

PLANET Technology does not warrant that the hardware will work properly in all environments and applications, and makes no warranty and representation, either implied or expressed, with respect to the quality, performance, merchantability, or fitness for a particular purpose.

PLANET has made every effort to ensure that this User's Manual is accurate; PLANET disclaims liability for any inaccuracies or omissions that may have occurred.

Information in this User's Manual is subject to change without notice and does not represent a commitment on the part of PLANET. PLANET assumes no responsibility for any inaccuracies that may be contained in this User's Manual. PLANET makes no commitment to update or keep current the information in this User's Manual, and reserves the right to make improvements to this User's Manual and/or to the products described in this User's Manual, at any time without notice. If you find information in this manual that is incorrect, misleading, or incomplete, we would appreciate your comments and suggestions.

FCC Warning

This equipment has been tested and found to comply with the regulations for a Class B digital device, pursuant to Part 15 of the FCC Rules. These limits are designed to provide reasonable protection against harmful interference when the equipment is operated in a commercial environment. This equipment generates, uses, and can radiate radio frequency energy and, if not installed and used in accordance with this user's guide, may cause harmful interference to radio communications. Operation of this equipment in a residential area is likely to cause harmful interference, in which case the user will be required to correct the interference at his own expense.

CE Mark Warning

In a domestic environment, this product may cause radio interference, in which case the user may be required to take adequate measures.

Revision

User's manual for PLANET Internet Conferencing Phone

Model: ICF-1000P

Rev: 1.0 (August. 2003)

Part No. EM-ICF1KP

Safety Instructions

Please read and understand all instructions before using this product.

- All openings on the housing of this product are designed for ventilation. Do not block or cover them. Do not insert any foreign objects in the openings. Doing so might cause a short circuit, electrical shock and/or fire.
- Before cleaning, unplug the machine and wipe it gently with soft cloth damped with water or diluted liquid soap. To avoid damage or malfunction to the machine, do not use alcohol or other strong solutions.
- Avoiding Electrical Shock:
 - Be sure to ground your machine so that the built-in shock arrester will function and reduce the chance of being shocked.
 - Do not connect the grounding wire to a gas or water pipe.
 - If possible, switch power off and unplug the machine during a thunderstorm.
- Do not try to disassemble the machine. Unplug the machine and call for service in the following situations:
 - The power cord or plug is damaged or frayed.
 - Some liquid is spilled into the machine.
 - The machine appears wet with water.
 - The machine appears faulty and cannot be repaired despite having followed all instructions in the manual.
 - The machine is damaged from being dropped or the housing is broken.
- Power Requirements and Power Cords:
 - Use a single wall outlet with the power of 100-240 V AC, 50/60 Hz 1A depending on label indication.
 - Do not place anything on the power cord. Avoid having people step on it.

Table of Contents

Chapter 1 Introduction	1
1.1 Features	1
1.2 Specification	2
Chapter 2 Installation	5
2.1 Package Contents	5
2.2 Front Panel introduction	6
2.3 Back panel introduction	8
2.4 Hardware Installation	9
Chapter 3 System Configuration	11
3.1 Power On and Access Configuration Menu	11
3.2 General Settings	12
3.3 Network	16
3.4 H.323	20
3.5 Exit the System Configuration	23
3.6 Phone Book Setup	23
Chapter 4 Getting Started	25
4.1 Making Video Calls	25
4.2 Using the Hand-free function	25
4.3 Using the Phone Book	26
4.4 Receiving Video Calls	27
Chapter 5 On-line Operation	29
5.1 Snapshot	29
5.2 Switch the Video and Audio source	30
5.3 Activate Video/Audio Mute	31
5.4 View	32
5.5 Picture Quality	32
5.6 Adjust on-line video and audio quality	32
Chapter 6 Troubleshooting	39

Chapter 1

INTRODUCTION

PLANET's Video Conferencing Phone, the ICF-1000P, brings you a vivid video conferencing experience through the Internet. No PC is required and none of the usual complications of complex web camera, sound card and software settings and specialized data connections. The ICF-1000P is an easy-to-use integrated system. All that is needed is a high speed Internet connection. Using simple setup procedures through keypad on the phone, you can install and use voice and video conferencing in a few minutes. Furthermore, the ICF-1000P has a built-in 6.8" LCD monitor in a telephone form factor ideal for desktop use.

ICF-1000P is H.323 compliant, which means you can have a seamless conferencing experience with other H.323 compliant video conferencing systems, VoIP gateway/phones and Microsoft NetMeeting. With Gatekeeper and MCU support, the ICF-1000P from PLANET makes communication with your business partners quick and cost-effective.

The ICF-1000P has two video inputs which can be used to connect to external cameras for group meetings and/or a document camera for showing detailed documents or photographs. With up to 30 fps frame rate, outstanding picture and sound quality, the PLANET Internet Video Conferencing Phone offers you a superior communications experience using the Internet.

1.1 Features

- ITU H.323 version 2 compliant
- Support H.263 Video Codec and G.723,1, G.711 Audio Codec
- Compatible with H.323 VoIP gateway, Gatekeeper , MCU (Multipoint Control Unit) and Microsoft NetMeeting
- Built-in High Quality CCD Camera
- Full-duplex Voice Conversation
- Superior voice quality with Voice Activity Detection(VAD), Automatic Gain Control(AGC), Acoustic Echo Cancellation(AEC) and Electrical Echo Cancellation(EEC) support
- Support Static IP, PPPoE, DHCP Connection
- Support Dynamic DNS
- 3 video resolution mode supported, CIF, QCIF and SQCIF
- Control bandwidth to 128K, 256K, 384K, 512K, 768K and no limit
- Supports frame rate up to 30 fps
- Phone book of 100 Names/Addresses and quick search
- On-line change of remote / local video size (PIP)

- On-line video/audio mute function
- On-line snapshot of remote video function
- On-line call status information about Tx/Rx frame rate and bandwidth usage
- Provide Auto-answer mode which allow you to surveil remote location with real-time picture and voice
- Built-in 6.8" TFT LCD monitor, angle adjustable
- Built-in High sensitive microphone
- Built-in high volume speaker
- 2 x mini-din A/V input interfaces for multiple camera connection
- 1-pair RCA Audio/Video Output for TV connection

1.2 Specification

Product	Internet Video Conferencing Phone
Model	ICF-1000P
Hardware	
LAN	1 x 10/100Mbps RJ-45 port
Camera	Built-in High quality CCD Camera, adjustable focus/tilt
Audio/Video Input	2 mini-din audio/video input 1 telephone handset 1 built-in microphone
Audio/Video Output	1 built-in 6.8" TFT LCD, adjustable angle 1 pair RCA Audio/Video output 1 built-in speaker
LED indicator	1 PWR/LNK LED
Dimension(WxDxH)	320 x 225 x 247 mm
Weight	2.4 kg
Operating Environment	0~40 degree C, 10~90% humidity
Power Requirement	12V DC, 3A
Power Consumption	20W, 68 BTU
EMC/EMI	CE, FCC
Protocols and Standard	

Standard	ITU-T H.323 v.2
Video Standard	H.263, H.263+
Audio Standard	G.723.1, G.711
Control Standard	H.245
Compatibility	Compatible with Gatekeeper, H.323 Videophone, H.323 VoIP gateway, Microsoft NetMeeting, Multipoint Control Unit (MCU)
LAN standard	IEEE 802.3 Ethernet IEEE 802.3u Fast Ethernet
Network and Configuration	
Connection Type	ADSL, Cable, VPN, LAN
Access Mode	Static IP, PPPoE, DHCP
Bandwidth Usage	128K, 256K, 384K, 512K, 768K and No Limit
Video Resolution	CIF(352x288), QCIF (176x144) and SQCIF (128x96)
Configuration Interface	Keypad with On Screen Display (OSD)



Chapter 2

INSTALLATION

2.1 Package Contents

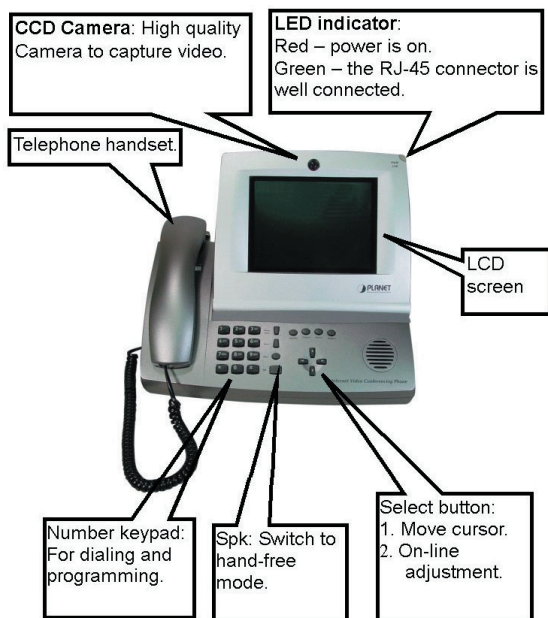
Check the contents of your package for following parts and quantity:

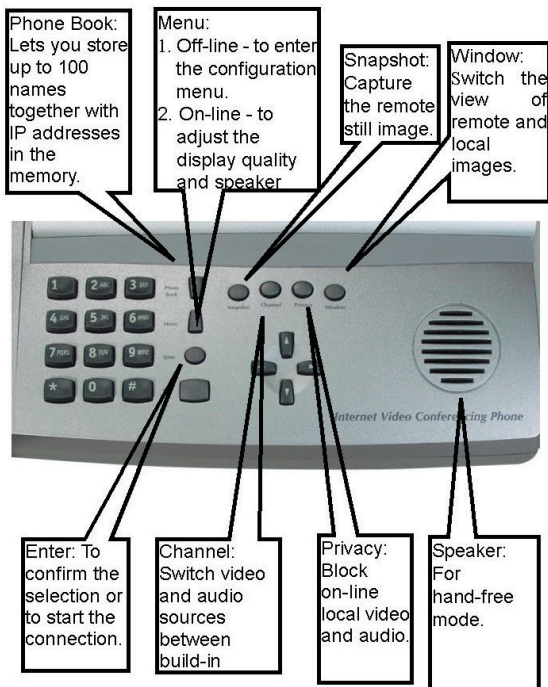
1. Videophone ICF-1000P x1 	2. Power Adapter & AC Cord x1 
3. RCA Cable x1 	4. Mini-din cable x 2 
5. User Manual x1 	

If any of these pieces are missing or damaged, please contact your dealer immediately, if possible, retain the carton including the original packing material, and use them against to repack the product in case there is a need to return it to us for repair.

2.2 Front Panel introduction

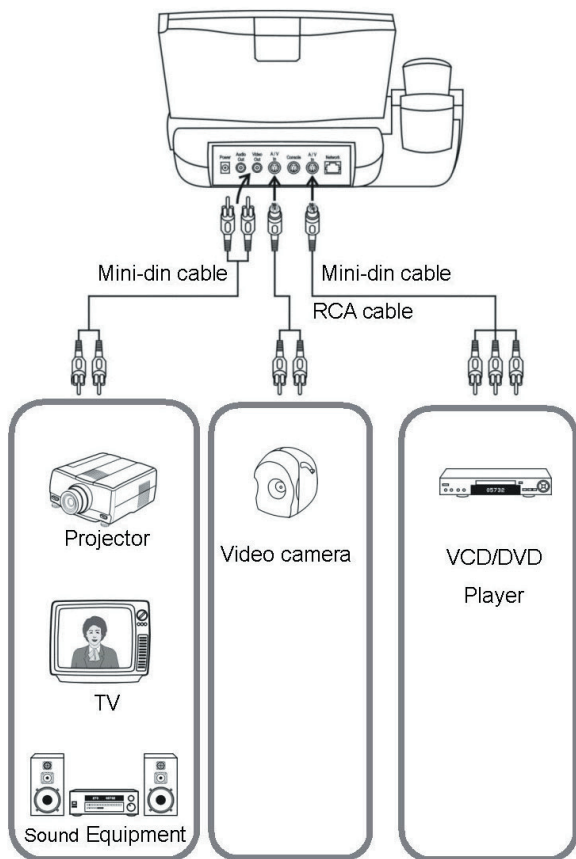
The following show the front panel of ICF-1000P and its button definition.





2.3 Back panel introduction

The real panel of ICF-1000P has two video inputs which can be used to connect to external cameras for group meetings and/or a document camera for showing detailed documents or photographs. It also provides 1 set of RCA AV output connector for connecting to TV, projector or stereo.



The following table lists all the connectors on the back panel of ICF-1000P and their function.

Connector	Function
12V DC	Connect to the DC output of supplied power adapter. This device requires at least 12V DC, 2.5A power input
Video Out*	Connect to TV or stereo
Audio Out	Connect to TV or projector
A/V In 1	Connect to other camera, microphone or VCD/DVD player
Console	Reserved for factory use
A/V In 2	Connect to other camera, microphone or VCD/DVD player
Ethernet	Connect to your local network or Cable/DSL modem. This port supports both 10Mbps and 100Mbps speed

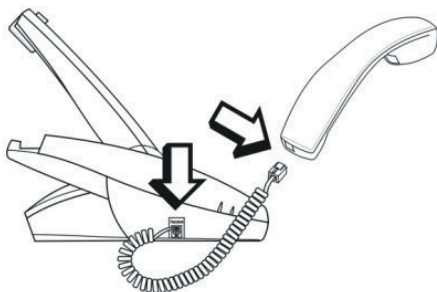
Note

1. For PAL-M model, the Video out connector can only supply black/white image.
2. The device is a power-required device, it means, the device will not work until it is powered. If you need to use it all the time, please consider use an UPS (Uninterrupted Power Supply) for this device.
3. In some area, installing a surge suppression device may also help to protect your device from being damaged by unregulated surge or current to the device or the power adapter.

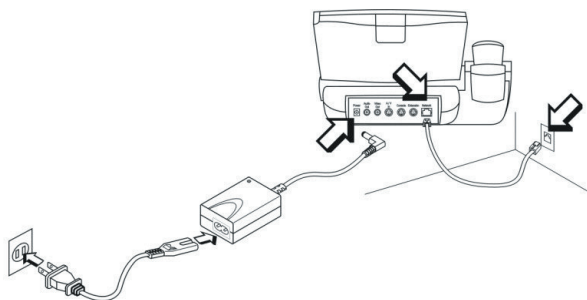
2.4 Hardware Installation

Please follow below steps to install the ICF-1000P on a suitable location:

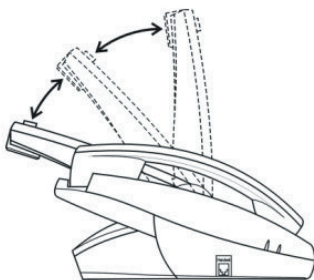
1. Insert the handset cord into the socket upon the handset and the other end into the socket on the left side of the ICF-1000P.



-
2. Plug in power cord and use the supplied cable to connect the ICF-1000P. Connect the network cable to your switch / hub, cable modem, xDSL modem or the wall-socket which connect to switch/hub.



3. The LCD panel can be tilted up or down to obtain the most comfortable viewing position.



Chapter 3

System Configuration

3.1 Power On and Access Configuration Menu

After power on, the PWR/LNK LED on the top-right of LCD monitor turn red to indicate it have received power. The LED will then turn green if the Ethernet network connection is established. The conferencing phone should take about 50 seconds to make power on self-test and system start up. In this period, the screen is still blank. Please do not press any button on this period.

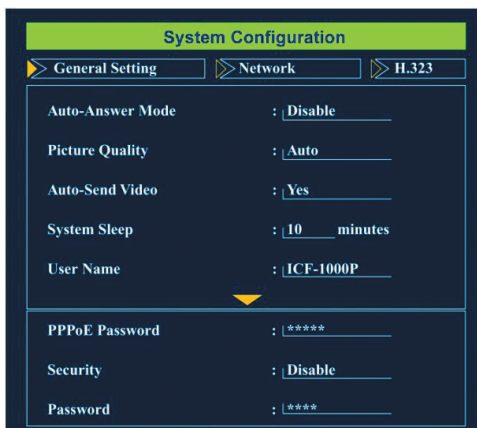
After the booting process is completed, the following page is shown on the LCD monitor.



Press [Menu] button, a System Configuration page is shown. Please use [▲], [▶], [▼] and [◀] to move the highlight to the function you need to configure and [Enter] to enter the function menu.

3.2 General Settings

General Settings provides some general parameters on using the ICF-1000P.



System Configuration		
> General Setting	>> Network	>> H.323
Auto-Answer Mode	:	Disable
Picture Quality	:	Auto
Auto-Send Video	:	Yes
System Sleep	:	10 minutes
User Name	:	ICF-1000P
▼		
PPPoE Password	:	*****
Security	:	Disable
Password	:	*****

3.2.1 Auto-Answer Mode

This feature allows the videophone to answer incoming calls automatically.

1. Press [Menu] key to enter the Main Menu of System Configuration.
2. Press [▲] or [▼] key to highlight "Auto-Answer Mode".
3. Press [Enter] key to show the choice list.
4. Press [▲] or [▼] key to select the setting you want.

Enable – ICF-1000P automatically answers any incoming calls.

Disable – Incoming calls can be answered only when receiver picks up the handset or presses the [Spk] key.

5. Press [Enter] key to confirm the setting.

3.2.2 Picture Quality

This function is responsible for the video quality that is sent to the remote site. There are three kinds of format (CIF, QCIF, SQCIF) provided.

1. Press [Menu] key to enter the Main Menu of System Configuration.
2. Press [▲] or [▼] key to select the Picture Quality.
3. Press [Enter] key to show the choice list.

4. Press [▲] or [▼] key to select the setting you want.

CIF – Common Intermediate Format, also known as Full CIF (FCIF). The video resolution is 352 x 288 pixels.

QCIF – Quarter CIF. The video resolution is 176 x 144 pixels.

SQCIF – Sub-Quarter CIF. The video resolution is 128 x 96 pixels.

Auto switch –The system automatically switches to a suitable quality.

5. Press [Enter] key to confirm the setting.

NOTE: While bandwidth is low, low-resolution image format (QCIF or SQCIF) is suggested for getting real-time image. The following table shows the maximum frame rate for each picture format on different bandwidth settings.

Bandwidth(Kbps)	Picture Format	Maximum frame rate (fps)	
		NTSC	PAL
No Limit	CIF	30	25
	QCIF	30	25
	SQCIF	30	25
768	CIF	30	25
	QCIF	30	25
	SQCIF	30	25
512	CIF	25	25
	QCIF	30	25
	SQCIF	30	25
384	CIF	20	20
	QCIF	30	25
	SQCIF	30	25
256	CIF	15	15
	QCIF	15	15
	SQCIF	20	20
128	CIF	10	10
	QCIF	15	15
	SQCIF	20	20

3.2.3 Auto-Send Video

Allows the user to decide whether to send local image to the remote site automatically or not. If disabled, no image of local site can be sent to the remote site during the call.

1. Press [Menu] key to enter the Main Menu of System Configuration.
2. Press [▲] or [▼] key to select the Auto-Send Video.
3. Press [Enter] key to show the choice list.
4. Press [▲] or [▼] key to select the setting you want.

Yes -> Auto Send Video enabled

No -> Auto Send Video disabled

5. Press [Enter] key to confirm the setting.

3.2.4 System Sleep

System Sleeping mode will be on when system is idle for a pre-set period.

1. Press [Menu] key to enter the Main Menu of System Configuration.
2. Press [▲] or [▼] key to select the System Sleep.
3. Press [Enter] key and use number key to input sleep time. (Up to 99 minutes)

NOTE: To disable the System Sleep mode, please set the time to "0" minute.

4. Press [◀] key for correction.
5. Press [▼] key to select the "Exit" and press [Enter] to return to the previous page.

NOTE: When system is under sleeping mode, press any key to wake up the system.

3.2.5 User Name

The User Name is the name assigned to the PPPoE server.

Press [Menu] key to enter the Main Menu of System Configuration.

1. Press [▲] or [▼] key to select the User Name.
2. Press [Enter] key to enter the on-screen keyboard to input your name. Select the "←" and press the [Enter] to delete the word.
3. Press [▼] key to select "Exit" and press [Enter] to return to the previous page.

3.2.6 PPPoE Password

The PPPoE Password is the name assigned to the PPPoE server.

1. Press [Menu] key to enter the Main Menu of System Configuration.
2. Press [▲] or [▼] key to select the PPPoE password.
3. Press [Enter] key to enter the on-screen keyboard to input your PPPoE password. Select the "✖" and press the [Enter] to delete the word.
4. Press [▼] key to select the "Exit" and press [Enter] to return to the previous page.

3.2.7 Security

When this function is enabled, you need to input the password for entering the System Configuration.

1. Press [Menu] key to enter the Main Menu of System Configuration.
2. Press [▲] or [▼] key to select the Security.
3. Press [Enter] key to show the choice list.
4. Press [▲] or [▼] key to select the setting you want.

Yes -> Security function is enabled.

No -> Security function is disabled.

5. Press [Enter] key to confirm the setting.

If the security is set to be enabled, a Password field is shown below Security. To configure the password:

1. Press [Menu] key to enter the Main Menu of System Configuration.
2. Press [▲] or [▼] key to select the Password.
3. Press [Enter] key to enter the on-screen keyboard to input your password. Select the "✖" and press the [Enter] to delete the word.
4. Press [▼] key to select the "Exit" and press [Enter] to return to the previous page.

NOTE: The default password is "0000".

3.3 Network

Network page allows you to set network relative parameters.

The screenshot shows a 'System Configuration' window with a green header. Below the header are three tabs: 'General Setting', 'Network' (which is selected and highlighted with a yellow arrow), and 'H.323'. The 'Network' tab contains a list of settings, each with a label, a value, and a unit or description. The settings are: Bandwidth (384 Kbps), Network Mode (Manual), Subnet Mask (255.255.255.0), User IP Address (192.168.0.254), Router IP Address (192.168.0.1), DNS IP Address (168.95.192.1), DDNS Hostname (empty), DDNS User Name (ICF-1000P), and DDNS Password (*****). A yellow arrow points to the 'Network' tab.

Parameter	Value	Unit/Description
Bandwidth	384	Kbps
Network Mode	Manual	
Subnet Mask	255.255.255.0	
User IP Address	192.168.0.254	
Router IP Address	192.168.0.1	
DNS IP Address	168.95.192.1	
DDNS Hostname		
DDNS User Name	ICF-1000P	
DDNS Password	*****	

3.3.1 Bandwidth

Select appropriate bandwidth in compliance with your Internet transmission speed when placing a call.

1. Press [Menu] key to enter the Main Menu of System Configuration.
2. Press [◀] or [▶] key to go to the Network page.
3. Press [Enter] key to show the choice list.
4. Press [▲] or [▼] key to select the bandwidth you need. ICF-1000P supports the following bandwidth settings.
No Limit, 768k, 512k, 384k, 256k and 128k
5. Press [Enter] key to confirm the setting.

3.3.2 Network Mode

The Network Mode function is used for network configuration.

NOTE: You can get the network setup information from your Internet Service Provider (ISP).

1. Press [Menu] key to enter the Main Menu of System Configuration.
2. Press [◀] or [▶] key to go to the Network page.
3. Press [▲] or [▼] key to select the Network Mode.
4. Press [Enter] key to show the choice list.

-
5. Press [▲] or [▼] key to select the setting you need.

Manual – Fixed IP Mode. Acquire the IP address, default gateway address, and subnet mask address from your ISP or your network administrator.

DHCP – Dynamic Host Configuration Protocol is used to automatically assign IP addresses within a LAN. Most cable modem Internet connection also use DHCP to dynamically assign IP address.

PPPoE – PPPoE (Point-to-Point Protocol over Ethernet) is a protocol used by many Internet Service Providers with ADSL Internet connection. A User Name and PPPoE Password should be provided.

6. Press [Enter] key to confirm the setting.

3.3.3 Subnet Mask

Enter the subnet mask for the LAN. (Please acquire Subnet Mask address from your ISP.)

1. Press [Menu] key to enter the Main Menu of System Configuration.
2. Press [◀] or [▶] key to go to the Network page.
3. Press [▲] or [▼] key to select the Subnet Mask.
4. Press [Enter] key and use the number key to input your Subnet Mask Address. Press [◀] for correction.
5. Press [▼] key to select "Exit" and press [Enter] to return to the previous page.

3.3.4 User IP Address

Enter the static IP address assigned to the ICF-1000P. (Please acquire Subnet Mask address from your ISP.)

1. Press [Menu] key to enter the Main Menu of System Configuration.
2. Press [◀] or [▶] key to go to the Network page.
3. Press [▲] or [▼] key to select the User IP Address.
4. Press [Enter] and use the number key to input your Router IP Address. Press [◀] to delete the word.
5. Press [▼] key to select "Exit" and press [Enter] to return to the previous page.

3.3.5 Router IP Address

Enter the network's default router IP address. (Please acquire Subnet Mask address from your ISP or your network administrator.)

-
1. Press [Menu] key to enter the Main Menu of System Configuration.
 2. Press [◀] or [▶] key to go to the Network page.
 3. Press [▲] or [▼] key to select the Router IP Address.
 4. Press [Enter] and use the number key to input your Router IP Address. Press [◀] for correction
 5. Press [▼] key to select "Exit" and press [Enter] to return to the previous page.

3.3.6 DNS IP Address

1. Press [Menu] key to enter the Main Menu of System Configuration.
2. Press [◀] or [▶] key to go to the Network page.
3. Press [▲] or [▼] key to select the DNS IP Address.
4. Press [Enter] and use number key to input your DNS IP Address. Press [◀] for correction.
5. Press [▼] key to select "Exit" and press [Enter] to return to the previous page.

3.3.7 DDNS Hostname

ICF-1000P currently supports the dynamic DNS service from DynDNS.org. It allows Internet users to connect to your ICF-1000P using a URL, rather than an IP Address.

This also solves the problem of having a dynamic IP address. With a dynamic IP address, your IP address may change whenever you connect, which makes it difficult to connect to you.

The Service works as follows:

1. You must register for the service at <http://www.dyndns.org> (Registration is free). Your password will be E-mailed to you.
2. After registration, use the "Create New Host" option (at www.dyndns.org) to request your desired Domain name.
3. Enter your data from www.dyndns.org in the DDNS Hostname, DDNS User Name and DDNS Password field.
4. ICF-1000P will then automatically ensure that your current IP Address is recorded at <http://www.dyndns.org>
5. From the Internet, users will be able to connect to ICF-1000P using your Domain name.

The following illustrate the procedures to configure the DDNS Hostname.

-
1. Press [Menu] key to enter the Main Menu of System Configuration.
 2. Press [◀] or [▶] key to go to the Network page.
 3. Press [▲] or [▼] key to select the DDNS Hostname.
 4. Press [Enter] and use the on-screen keyboard to input your DDNS Hostname. For example, "icf-1000p.dyndns.org", "icf-1000p.homeip.net", etc. Select the "✖" and press [Enter] for correction.
 5. Press [▼] key to select "Exit" and press [Enter] to return to the previous page.

3.3.8 DDNS User Name


1. Press [Menu] key to enter the Main Menu of System Configuration.
2. Press [◀] or [▶] key to go to the Network page.
3. Press [▲] or [▼] key to select the DDNS User Name.
4. Press [Enter] key to enter the on-screen keyboard to input your DDNS User Name. Select the "✖" and press [Enter] for correction.
5. Press [▼] key to select "Exit" and press [Enter] to return to the previous page.

3.3.9 DDNS Password

1. Press [Menu] key to enter the Main Menu of System Configuration.
2. Press [◀] or [▶] key to go to the Network page.
3. Press [▲] or [▼] key to select the DDNS Password.
4. Press [Enter] key to enter the on-screen keyboard to input your DDNS Password. Select the "✖" and press [Enter] for correction.
5. Press [▼] key to select "Exit" and press [Enter] to return to the previous page.

3.4 H.323

The screenshot shows a 'System Configuration' window with a green header. Below the header are three tabs: 'General Setting', 'Network', and 'H.323'. The 'H.323' tab is selected and highlighted with a yellow arrow. The settings listed are:

Gatekeeper Mode	: <u>Disable</u>
GK IP Address	: <u>192.168.0.253</u>
Phone Number	: <u>12345</u>
Alias Name	: <u>ICF-1000P</u>
Default	: <u>No Action</u>
	
Audio Format	: <u>Auto</u>
Software Keyboard	: <u>Disable</u>

3.4.1 Gatekeeper Mode

When register a gatekeeper, you can assign a number to the videophone. This makes the videophone user-friendly, as users only have to dial a number instead of entering an IP address when making a call.

1. Press [Menu] key to enter the Main Menu of System Configuration.
2. Press [◀] or [▶] key to go to the H.323 sheet.
3. Press [▲] or [▼] key to select the Gatekeeper Mode.
4. Press [Enter] key to show the choice list.
5. Press [▲] or [▼] key to select the setting you want.

Disable -> not to register a gatekeeper.

Auto -> Automatically search for gatekeeper IP.

Manual -> User must input gatekeeper IP address.

6. Press [Enter] key to confirm the setting.

3.4.2 GK IP Address

Enter the Gatekeeper IP address assigned to the ICF-1000P. (Please acquire Subnet Mask address from your ISP.)

1. Press [Menu] key to enter the Main Menu of System Configuration.
2. Press [◀] or [▶] key to go to the H.323 sheet.
3. Press [▲] or [▼] key to select the GK IP Address.
4. Press [Enter] and use number key to input your GK IP Address. Press [◀] for

correction.

5. Press [▼] key to select "Exit" and press [Enter] to return to the previous page.

3.4.3 Phone Number

This function is to assign a dedicated number to your videophone.

1. Press [Menu] key to enter the Main Menu of System Configuration.
2. Press [◀] or [▶] key to go to the H.323 sheet.
3. Press [▲] or [▼] key to select the Phone Number.
4. Press [Enter] key and use number key to input your Phone Number. Press [◀] for correction.
5. Press [▼] key to select "Exit" and press [Enter] to return to the previous page.

3.4.4 Alias Name

The alias name is the GK name given to the ICF-1000P by the GK Manager. It may be used in place of an IP address when dialing H.323 calls.

1. Press [Menu] key to enter the Main Menu of System Configuration.
2. Press [◀] or [▶] key to come to the H.323 sheet.
3. Press [▲] or [▼] key to select the Alias Name.
4. Press [Enter] key to enter the on-screen keyboard to input your Alias name. Select the "✖" and press [Enter] for correction.
5. Press [▼] key to select "Exit" and press to return to the previous page.

3.4.5 Default Setting

You can use this function to reset System Configuration back to factory default value.

1. Press [Menu] key to enter the Main Menu of System Configuration.
2. Press [◀] or [▶] key to go to the H.323 sheet.
3. Press [▲] or [▼] key to select the Default Setting.
4. Press [Enter] key to show the choice list.
5. Press [▲] or [▼] key to select the setting you want.

No Action – Retain the present setting.

Configuration – Initiate System Configuration to default value.

Phone Book – Initiate Phone Book to default value.

6. Press [Enter] key to confirm the setting.

3.4.6 Audio Format

PLANET Videophone complies with two audio protocols – G.711 and G.723.

The audio format can be adjusted to compensate for audio distortion caused by high packet loss. Select a proper audio protocol for audio transmission.

1. Press [Menu] key to enter the Main Menu of System Configuration.
2. Press [◀] or [▶] key to go to the H.323 sheet.
3. Press [▲] or [▼] key to select the Audio Format.
4. Press [Enter] key to show the choice list.
5. Press [▲] or [▼] key to select the setting you need.

Auto – The system automatically switch.(Default)

G.711 – 64kbps

G.723 – 6.3kbps

6. Press [Enter] key to confirm the setting.

3.4.7 Software Keyboard

Software Keyboard allow you to edit the dial number and Address field of phone book by using an on-screen keyboard. Enable this function if you need to dial destination device by DNS name.

1. Press [Menu] key to enter the Main Menu of System Configuration.
2. Press [◀] or [▶] key to go to the H.323 sheet.
3. Press [▲] or [▼] key to select the Software Keyboard.
4. Press [Enter] key to show the choice list.
5. Press [▲] or [▼] key to select the setting you want.

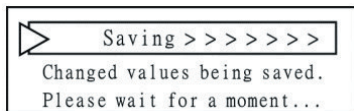
Disable – The Software Keyboard Mode is off.

Enable – The Software Keyboard Mode is on.

6. Press [Enter] key to confirm the setting.

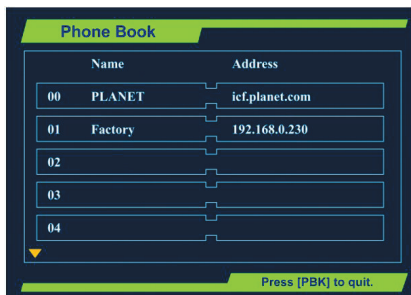
3.5 Exit the System Configuration

After completing the system configuration, please press [Menu] key to save and exit.



3.6 Phone Book Setup

The ICF-1000P provides an address book to store access names and numbers. You can make a speed dial directly from the phone book. The ICF-1000P address book can store up to 100 entries.



1. From the main screen, press [Phone Book] key to enter the Phone Book page.
2. Press [▲] or [▼] key to select the entries.
3. Press [◀] [▶] to switch between Name column and Address column
4. Press [Enter] key to input the Name or Address.
5. Press [Phone Book] key again to save and exit the Phone Book page.

NOTE: You can press a number to jump to the phone book entry started with this number. For example, you can press 5 to jump to 50th phone book entry.

3.6.1 Input Name

1. From the Phone Book page, select one entry and switch to the Name column.
2. Use [Enter] and select buttons to input characters.

NOTE: for correction, please move the cursor to "◀" and press [Enter].

3.6.2 Input Address

1. From the Phone Book sheet, switch to the Address column.
2. Use the number key to input your User IP Address.
3. Press [◀] key for correction.
4. Press * key to input the "."(Dot).
5. Press [▼] key to select "Exit" and press [Enter] to return to the previous page.
6. Press [Phone Book] key again to save and exit the Phone Book sheet.

NOTE: If software keyboard is enabled (3.4.7), an on-screen keyboard is shown. Please use [▲][▶][▼] and [◀] to move the highlight to the word you want and press [Enter] to input. Select the "◀" and press the [Enter] for correction.

Chapter 4

Getting Started

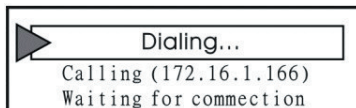
Before making a video call, please make sure that the unit has been installed and set up successfully.

4.1 Making Video Calls

1. From the main screen, pick up the handset and dial the IP Address of the remote site.



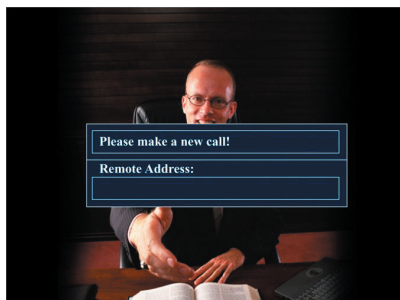
2. Press [Enter] key to establish a connection.



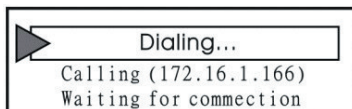
3. When the connection is set up successfully, the video communication starts and the remote site video will be shown on the local screen.
4. Hand up the handset to end the connection.

4.2 Using the Hand-free function

1. From the main screen, press [Spk] key then you can hear the dial tone.
2. Dial the IP Address of the remote site.



3. Press [Enter] key to establish a connection.



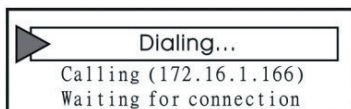
4. When the connection is set up successfully, The video communication starts and the remote site video will be shown on the local screen.
5. Press [Spk] key to end the connection.

4.3 Using the Phone Book

This Phone Book provides user with a convenient way for retrieving the IP addresses of some regularly called parties.

1. From the main screen, press [Phone Book] key to enter the phonebook sheet.
2. From the phonebook sheet, use Select Buttons to select the name/IP address you want to call.
3. Press [Spk] key to establish a connection.





4. When the connection is set up successfully, the video communication starts and the remote site video will be shown on the local screen.
5. Press [Spk] key to end the connection.

4.4 Receiving Video Calls

4.4.1 Auto-Answer Mode

When a video call comes in, the videophone rings and answers it automatically. The connection will be established within a few seconds.

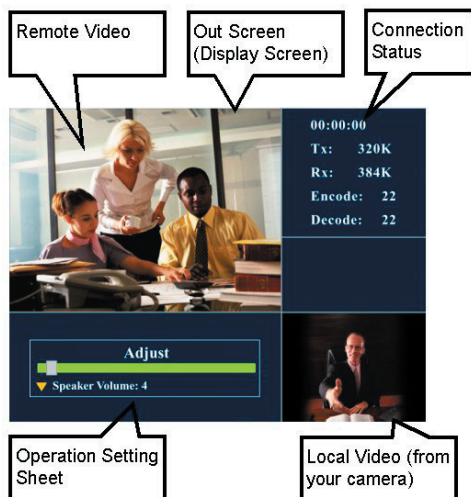
4.4.2 Manual Mode

When a video call comes in, just pick up the handset or press [Spk] key to answer the phone.



Chapter 5

On-line Operation



5.1 Snapshot

The snapshot function captures the remote image. This function allows the two parties to see more details of the pictures.

1. Press [Snapshot] key once to take a snapshot of the remote site image.
2. Press [Snapshot] key again to release the image and return to current video call.



5.2 Switch the Video and Audio source

ICF-1000P allows you to connect with two external video and audio sources, for example, a camera. When external devices are connected to the videophone, you can switch to the video and/or audio taken by other external devices.

5.2.1 Video channel

1. Press [Channel] key to enter the channel selecting function.
2. Use [◀] or [▶] to switch to other cameras.

Main (Built-in) → Channel 1(from A/V In 1) → Channel 2 (from A/V In 2)



5.2.2 Audio channel

1. Press [Channel] key to enter the channel selecting function.
2. Use [▲] or [▼] key to select the Audio Channel.
3. Use [◀] or [▶] to switch to other audio sources.

Main (Built-in) → Channel 1(from A/V In 1) → Channel 2 (from A/V In 2)



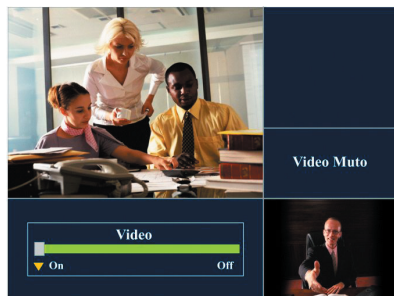
5.3 Activate Video/Audio Mute

If you want to temporarily stop video or audio transmission to remote site during the connection, you can use this function to conceal the local video or audio.

5.3.1 Activate Video Mute

1. Press [Privacy] key to enter Privacy function.
2. Use [◀] or [▶] key to control video On/Off.

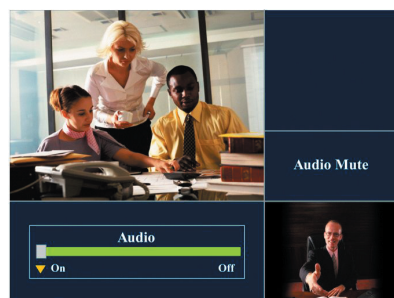
Press [Privacy] key again to exit the privacy setting mode.



5.3.2 Activate Audio Mute

1. Press [Privacy] key to enter Privacy function.
2. Use [▲] or [▼] key to select the Audio Channel.
3. Use [◀] or [▶] key to control audio On/Off.

Press [Privacy] key again to exit the privacy setting mode.



5.4 View

The ICF-1000P supports PIP (Picture in Picture) for you to view remote site and local site on same screen. You can use this function to switch the video showing mode. There are three modes available for selection.

Press [Window] key to switch the video display mode in the sequence as below:

Remote and local video → Remote full screen video → Local full screen video.

5.5 Picture Quality

This function is to display the status of Network connecting, for example, connecting time, TX/RX Bit Rate as well as TX/RX Frame Rate and so on. For getting better quality you can adjust the settings below under online mode.

Press [Menu] key to show the connecting status and to adjust the camera and display picture parameters and speaker volume.

TX: Transmitting Rate. RX: Receiving Rate

Encode: Encoding Rate Decode: Decoding Rate



5.6 Adjust on-line video and audio quality

For getting better video and audio quality you can adjust the settings below under online mode.

- Speaker Volume
- Camera Hue
- Camera Saturation
- Camera Contrast
- Camera Brightness
- Display Hue
- Display Saturation
- Display Contrast
- Display Brightness

5.6.1 Adjust Speaker Volume

1. Press [Menu] key to enter on-line adjustment.
2. Use [▲] or [▼] key to locate Speaker Volume.
3. Use [▶] key to increase the speaker volume.
4. Use [◀] key to decrease the speaker volume.
5. Press [Menu] key again to exit on-line adjustment.



5.6.2 Adjust Camera Hue

This function can adjust video color from camera input.

1. Press [Menu] key to enter on-line adjustment.
2. Use [▲] or [▼] key to locate Camera Hue.
3. Use [▶] key to increase the video hue from camera input.
4. Use [◀] key to decrease the video hue from camera input.

Press [Menu] key again to exit on-line adjustment.



5.6.3 Adjust Camera Saturation

This function can adjust video saturation from camera input.

1. Press [Menu] key to enter on-line adjustment.
2. Use [▲] or [▼] key to locate Camera Saturation.
3. Use [▶] key to increase the video saturation from camera input.
4. Use [◀] key to decrease the video saturation from camera input.
5. Press [Menu] key again to exit on-line adjustment.



5.6.4 Adjust Camera Contrast

The function is to adjust the video contrast from camera input.

1. Press [Menu] key to enter on-line adjustment.
2. Use [▲] or [▼] key to locate Camera Contrast.
3. Use [▶] key to increase the video contrast from camera input.
4. Use [◀] key to decrease the video contrast from camera input.
5. Press [Menu] key again to exit on-line adjustment.



5.6.5 Adjust Camera Brightness

The function is to adjust the video brightness from camera input.

1. Press [Menu] key to enter on-line adjustment.
2. Use [▲] or [▼] key to locate Camera Brightness.
3. Use [►] key to increase the video brightness from camera input.
4. Use [◄] key to decrease the video brightness from camera input.
5. Press [Menu] key again to exit on-line adjustment.



5.6.6 Adjust Display Hue

The function is to adjust display video hue.

1. Press [Menu] key to enter on-line adjustment.
2. Use [▲] or [▼] key to locate Display Hue.
3. Use [►] key to increase the display video hue.
4. Use [◄] key to decrease the display video hue.
5. Press [Menu] key again to exit on-line adjustment.



5.6.7 Adjust Display Saturation

The function is to adjust display video saturation.

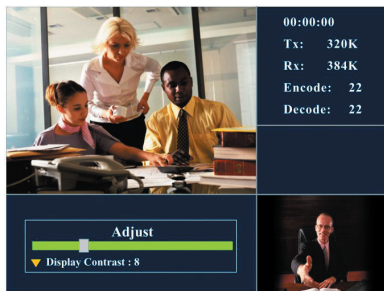
1. Press [Adjust] key to enter on-line adjustment.
2. Use [▲] or [▼] key to locate Display Saturation.
3. Use [▶] key to increase the display video saturation.
4. Use [◀] key to decrease the display video saturation.
5. Press [Menu] key again to exit on-line adjustment.



5.6.8 Adjust Display Contrast

The function is to adjust display video contrast.

1. Press [Menu] key to enter on-line adjustment.
2. Use [▲] or [▼] key to locate Display Contrast.
3. Use [▶] key to increase the display video contrast.
4. Use [◀] key to decrease the display video contrast.
5. Press [Menu] key again to exit on-line adjustment.



5.6.9 Adjust Display Brightness

The function is to adjust display video brightness.

1. Press [Menu] key to enter on-line adjustment.
2. Use [▲] or [▼] to locate Display Brightness.
3. Use [▶] key to increase the display video brightness.
4. Use [◀] key to decrease the display video brightness.
5. Press [Menu] key again to exit on-line adjustment.





Chapter 6

Troubleshooting

Your ICF-1000P is a reliable and easy to use videophone. If you encounter any problems when you use this product, please refer to the following solutions, which might help you solve your problems. If none of these solutions are helpful, please contact us for assistance.

1. The ICF-1000P can't be turned on.

Please make sure that the LED on the Adapter is always green and the LED on the ICF-1000P is always red or green. Also check the input voltage is correct. If you still can't turn on the ICF-1000P, please contact the local dealer.

2. ICF-1000P can't make a call successfully.

- Please make sure that the RJ-45 plug has been put into the socket correctly and firmly. The LED on ICF-1000P should turn green if well connected with Ethernet.
- Press the [Menu] key to check all the setting of "Network" and "H.323" is correct.
- Please reconfirm the remote IP address or DNS name.

3. ICF-1000P can't receive an incoming call automatically.

Press the [Menu] key and switch the setting page to "General", and check whether the function of Auto-Answer Mode has been activated. Otherwise you should press [Spk] key or pick up the handset to receive the incoming call.

4. The IP phone or VoIP Gateway cannot communicate with ICF-1000P.

- Please verify that the devices are compliant with H.323 standard.
- Press the [Menu] key and enter "General" sheet to check the function of Auto Send Video hasn't been activated.

5. The remote site only receives the local video without audio.

At the remote site, please adjust the "Speaker Volume" and make sure that the AV connector has been connected correctly and firmly to the videophone.

6. The voice quality is not clear or not continuous.

- The microphone input volume should be moderate.
- If the speaker volume is too high, the echo cancellation might become invalid. Please set the speaker volume to default value.

-
- Please check if your bandwidth is broad enough. The minimum bandwidth required is 128Kbps for both upstream and downstream.
 - Please set the bandwidth of the remote site and local site to the same level.
7. The video quality is low. (The image is blocking or freezing.)
- Please check if your bandwidth is broad enough. The minimum bandwidth required is 128 Kbps for both upstream and downstream.
 - Please set the bandwidth of the remote site and local site to the same level.





Part No.:EM-ICF1KP

