



# Internet Video Conference Phone

**ICF-1600**

User's manual

Version 1.0

## Copyright

Copyright (C) 2008 PLANET Technology Corp. All rights reserved.

The products and programs described in this User's Manual are licensed products of PLANET Technology, This User's Manual contains proprietary information protected by copyright, and this User's Manual and all accompanying hardware, software, and documentation are copyrighted.

No part of this User's Manual may be copied, photocopied, reproduced, translated, or reduced to any electronic medium or machine-readable form by any means by electronic or mechanical. Including photocopying, recording, or information storage and retrieval systems, for any purpose other than the purchaser's personal use, and without the prior express written permission of PLANET Technology.

## Disclaimer

PLANET Technology does not warrant that the hardware will work properly in all environments and applications, and makes no warranty and representation, either implied or expressed, with respect to the quality, performance, merchantability, or fitness for a particular purpose.

PLANET has made every effort to ensure that this User's Manual is accurate; PLANET disclaims liability for any inaccuracies or omissions that may have occurred.

Information in this User's Manual is subject to change without notice and does not represent a commitment on the part of PLANET. PLANET assumes no responsibility for any inaccuracies that may be contained in this User's Manual. PLANET makes no commitment to update or keep current the information in this User's Manual, and reserves the right to make improvements to this User's Manual and/or to the products described in this User's Manual, at any time without notice.

If you find information in this manual that is incorrect, misleading, or incomplete, we would appreciate your comments and suggestions.

## CE mark Warning

The is a class B device, In a domestic environment, this product may cause radio interference, in which case the user may be required to take adequate measures.

## WEEE Warning



To avoid the potential effects on the environment and human health as a result of the presence of hazardous substances in electrical and electronic equipment, end users of electrical and electronic equipment should understand the meaning of the crossed-out wheeled bin symbol. Do not dispose of WEEE as unsorted municipal waste and have to collect such WEEE separately.

## Trademarks

The PLANET logo is a trademark of PLANET Technology. This documentation may refer to numerous hardware and software products by their trade names. In most, if not all cases, their respective companies claim these designations as trademarks or registered trademarks.

## Revision

User's Manual for PLANET Internet Video Conference Phone:

Model: ICF-1600

Rev: 1.0 (May, 2008)

Part No. EM-ICF-1600V1

## TABLE OF CONTENTS

---

|   |           |
|---|-----------|
| <b>Safety Instructions .....</b>                                  | <b>6</b>  |
| <b>Chapter 1 Introduction .....</b>                               | <b>7</b>  |
| Overview.....   | 7         |
| Package Content .....   | 7         |
| Physical Details .....  | 8         |
| <b>Chapter 2 Preparations &amp; Installation .....</b>            | <b>10</b> |
| Physical Installation Requirement .....                           | 10        |
| Basic Operating Instructions .....                                | 12        |
| <b>Chapter 3 Network Service Configurations.....</b>              | <b>16</b> |
| Configuring Network and monitoring your Video Phone .....         | 16        |
| Network Setup (On LCD Screen).....                                | 16        |
| Network Setup (Web Interface).....                                | 23        |
| <b>Chapter 4 VoIP Setup.....</b>                                  | <b>25</b> |
| Configuration VoIP and System Settings for your Video Phone ..... | 25        |
| VoIP Setup (On LCD Screen).....                                   | 25        |
| VoIP Setup (Web Interface) .....                                  | 27        |
| Data / Time Setup .....   | 28        |
| Accepting and Making Phone Call.....                              | 30        |
| Holding and Transferring a Call .....                             | 37        |
| Auto Call Forwarding.....   | 39        |
| Auto Call Rejection (DND Function).....                           | 40        |
| Call Waiting .....  | 41        |
| Adjust Handset / Headset / Speakerphone Volume .....              | 41        |
| Selecting Default Audio Codec .....                               | 42        |
| <b>Chapter 5 Advanced Configurations.....</b>                     | <b>44</b> |
| Manages your Address Book and video phone settings .....          | 44        |
| Address Book edits.....   | 44        |
| View Call Records .....   | 46        |
| Personalize – Change Screen Saver.....                            | 46        |
| Change Video Preference .....                                     | 48        |
| Change Display Language.....                                      | 50        |
| View System Status .....  | 50        |
| Video Privacy .....   | 51        |
| Shutdown.....   | 52        |
| <b>Chapter 6 Web Browser Operates.....</b>                        | <b>53</b> |
| Using Web Browser .....   | 53        |
| <b>Appendix A .....</b>   | <b>57</b> |
| Firmware Upgrade .....  | 57        |

|                                      |           |
|--------------------------------------|-----------|
| <b>Appendix B</b> .....              | <b>59</b> |
| <b>FAQ</b> .....                     | <b>59</b> |
| <b>Appendix C</b> .....              | <b>61</b> |
| <b>ICF-1600 Specifications</b> ..... | <b>61</b> |

## **Safety Instructions**

Please follow the following safety instructions while you're using this video phone, or you could damage this phone and yourself.

1. Do not place this phone in high-humid and / or hot environment, like bathroom or kitchen. Please refer to the specification of this phone to understand the environmental requirements of this phone.
2. This phone is designed for indoor use; do not use this phone at places like garden or any other outdoor environment.
3. Do not point the video camera to strong light; it will damage the image sensor.
4. If you want to place this phone at high places, please make sure that the phone is properly secured. Falling down from high places will damage this phone!
5. Do not drag any connected cord with force; the terminal and cord will be damaged.
6. Only use dry cloth with water to clean this phone; do not use alcohol or other chemical solution to clean this phone.
7. There's no user-serviceable part inside this phone; if the phone is not working properly, please contact the dealer of purchase to ask for help.
8. Do not set the volume control of handset or headset to a too high setting; high volume could damage your ear if you use this phone for too long time.
9. Do not put the phone and / or A/C adapter on paper, cloth, or other flammable materials.
10. If you smell something strange or even see smoke coming out from the phone or A/C adapter, disconnect the power cord immediately, and call your dealer of purchase for help.

# Chapter 1

## Introduction



### Overview

PLANET's latest Video Conferencing product, ICF-1600, brings you a vivid video conferencing experience through the Internet. Neither the PC nor the complex web camera is required for Internet video communications. Furthermore, the ICF-1600 has a built-in 7" LCD monitor **in a telephone form factor** ideal for desktop use.

**The ICF-1600 is** compliant with SIP standard, which brings you a seamless conferencing experience with other SIP compliant video conferencing systems, voice gateway, IP phones, ATA and IP PBX System. With SIP Proxy Server and MCU support, the ICF-1600 from PLANET makes quick and cost-effective communications possible for you and your business partners.

The ICF-1600 has multiple video inputs which can be used to connect to external cameras for group meetings and/or a document camera for showing detailed documents or photographs. With up to 30 fps frame rate, outstanding picture and sound quality, the PLANET Internet Video Conferencing Phone offers you a superior communications experience via the Internet.

### Key Features

- 7" Color TFT LCD display with video/audio output function
- Max. 30 Frames per Second
- Built-in Web Browse for Internet navigation
- Personalize phone ring tone and screensaver
- User-friendly GUI/Web-based Management

### VoIP Features

- Video Conferencing H.263 / Mpeg 4 compliant with Auto-Negotiation
- Speak Phone function for Hands-Free operation
- SIP Outbound Proxy, STUN (RFC3489)
- Call Wait / Forward / Transfer support
- G.711, G.729 AB, G.723 voice codec

### Package Content

The contents of your product should contain the following items:

- Video IP Phone unit
- Power Adapter
- Quick Installation Guide
- User's Manual CD
- RJ-45 cable x 1

## Physical Details

The following figure illustrates the components of ICF-1600:

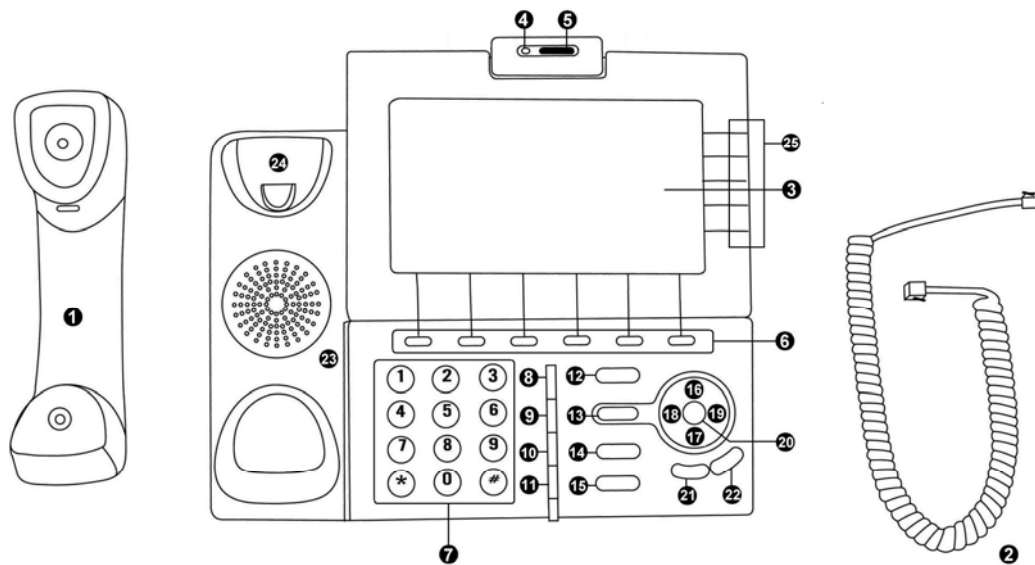


Figure 1. All keys of ICF-1600

| Item No. | Description   | Item No. | Description     |
|----------|---|----------|-----------------|
| 1        | Handset   | 2        | Handset Cord    |
| 3        | LCD Display   | 4        | Video Camera    |
| 5        | Camera Lid  | 6        | Soft Key 1 to 6 |
| 7        | Numeric Keypad  | 8        | Brightness Up   |
| 9        | Brightness Down                                       | 10       | Redial Key      |
| 11       | TV-Out Switch   | 12       | Mute Key        |
| 13       | Camera Key  | 14       | Headset Key     |
| 15       | Speaker Key   | 16       | Up Key          |
| 17       | Down Key  | 18       | Left Key        |
| 19       | Right Key   | 20       | OK Key          |
| 21       | Volume Down   | 22       | Volume Up       |
| 23       | Speaker   | 24       | Hook            |
| 25       | Soft Key A to E (Located on the right of LCD display) |          |                 |



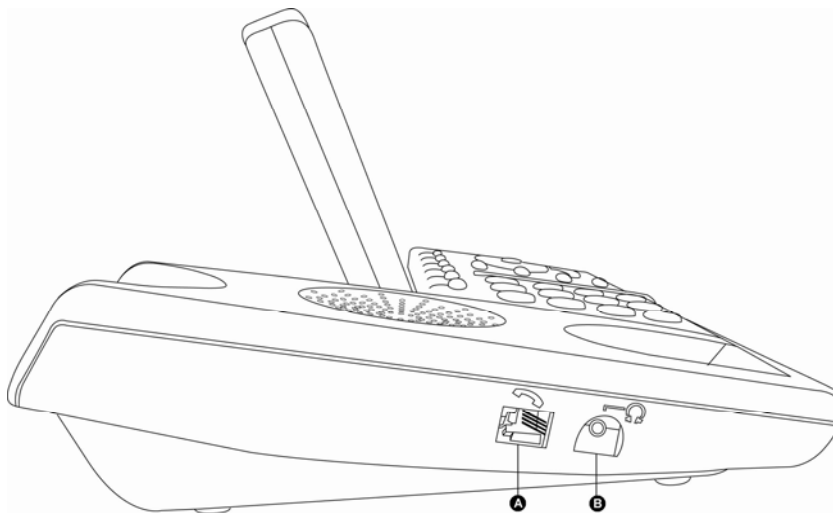


Figure 2. Left views of ICF-1600

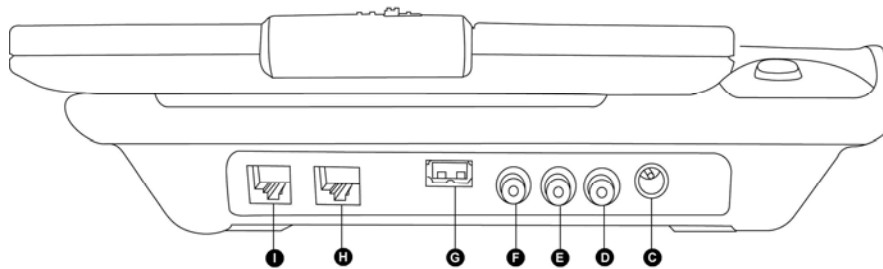


Figure 3. Rear views of ICF-1600

| Item No. | Description         | Item No. | Description          |
|----------|---------------------|----------|----------------------|
| A        | Handset Jack        | B        | Headset Jack         |
| C        | Power Jack          | D        | Audio Output – Right |
| E        | Audio Output – Left | F        | Video Output         |
| G        | USB Jack            | H        | Network Jack – LAN   |
| I        | Network Jack - PC   |          |                      |

# Chapter 2

## Preparations & Installation

# 2

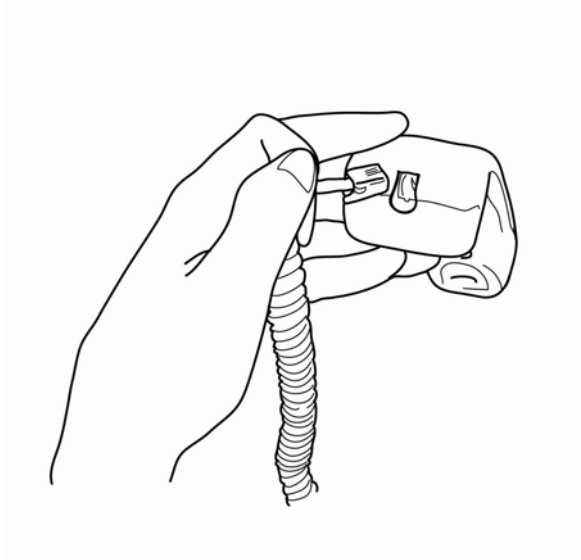
### Physical Installation Requirement

This chapter illustrates basic installation of ICF-1600

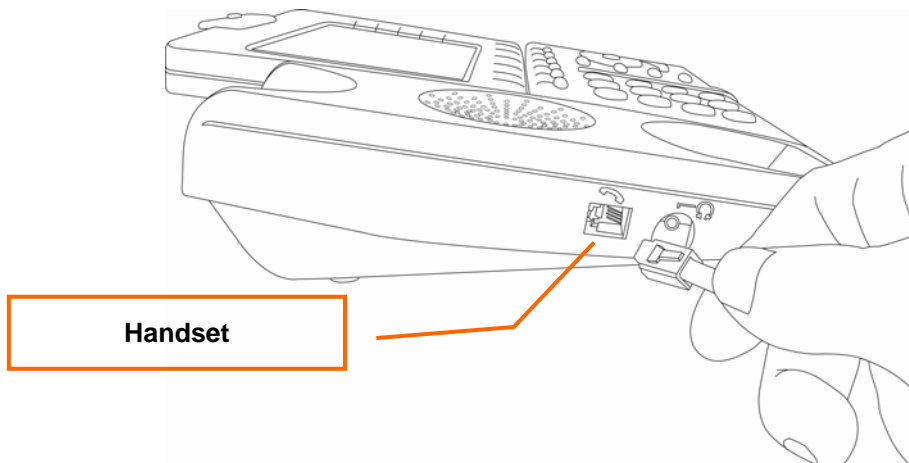
- Physical basic Install
- Basic operating.
- TCP/IP protocol must be installed on PC.

Please follow the following instructions to install ICF-1600 video phone:

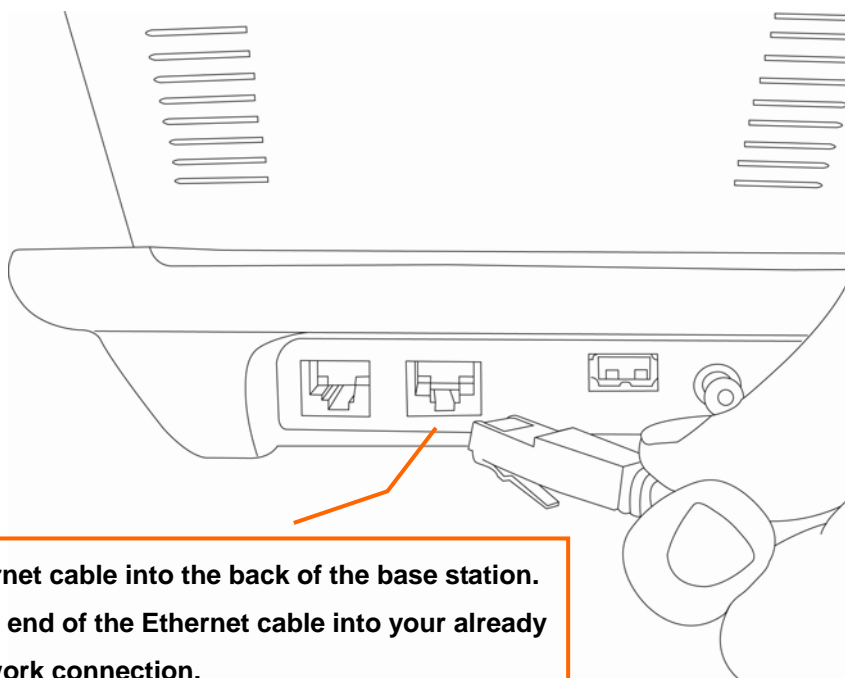
- (1) Unpack the package and check if there's anything missing
- (2) Insert the handset cord to the handset, as shown on the picture.



- (3) Insert the other end of handset to the handset jack <A>, and put the handset on the phone.



- (4) Connect the Ethernet cable to the LAN Ethernet jack <H>, and connect the other end of Ethernet cable to your LAN (Local area network).



**Plug the Ethernet cable into the back of the base station.  
Plug the other end of the Ethernet cable into your already prepared network connection.**

- (5) If you have a computer or other network device, you can connect its Ethernet cable to PC Ethernet jack <I> on this phone, then your PC or network device can be connected to the LAN via this phone.

- (6) [Optional] This IP phone supports standard USB mouse. You can connect a USB mouse to the USB port, this also can help to quick select the button on the screen.

You can skip this step if you don't want to use mouse with this phone.

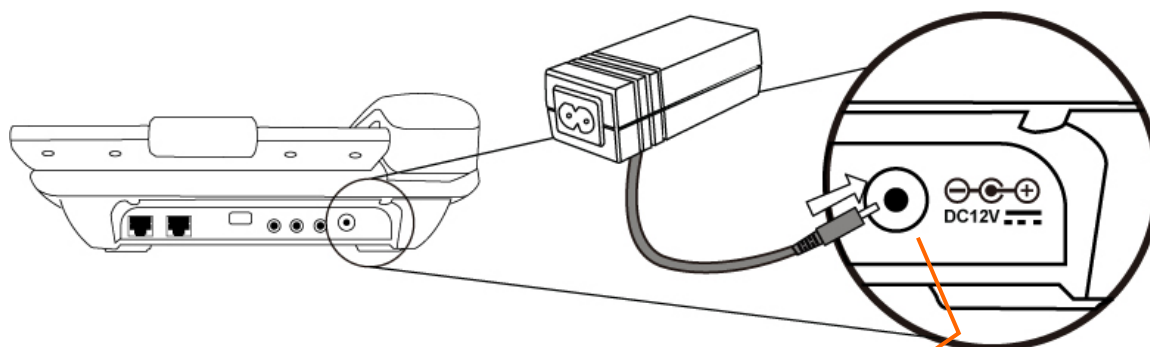
- (7) [Optional] Build the connection between your TV set and this video phone by A/V cable (package not included, please buy it separately). A/V cable is color-coded (yellow for video, white for left audio channel, and red for right audio channel), please connect this IP phone and your TV set's A/V connector according to the color shown on the A/V cable.

You can skip this step if you don't want to use TV with this phone.

**Note**

If your TV set only has 1 audio input (mono speaker), please connect the left audio channel (white color-coded) of this phone to your TV set.

- (8) Insert the power plug of A/C adapter to the power jack.



**Power Adapter (12V DC)**

**NOTE: Use only the power adapter shipped with the unit to ensure correct functionality.**

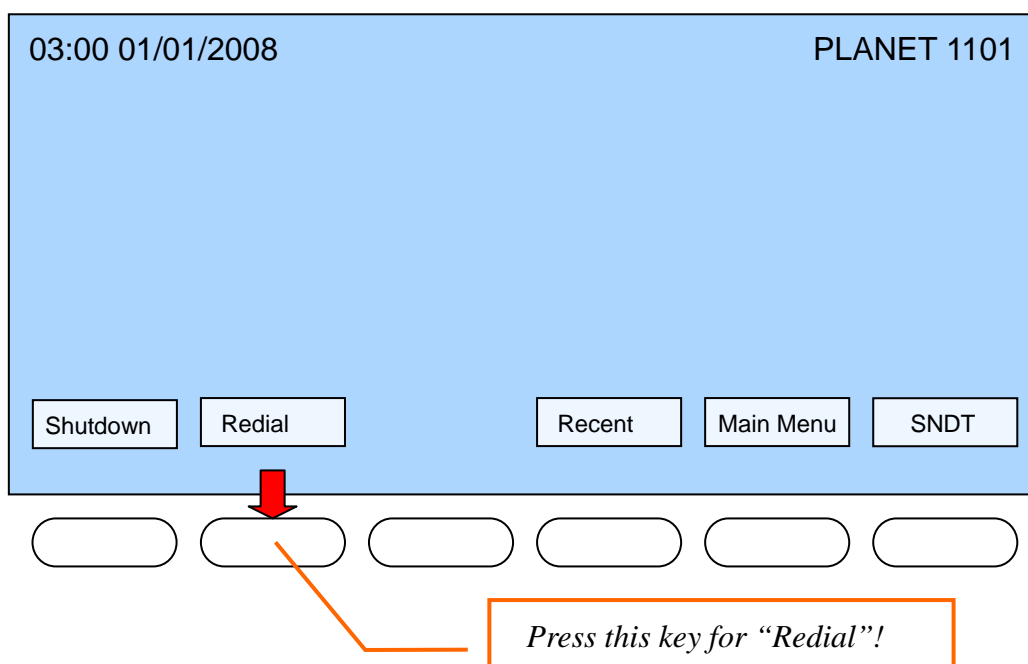
- (9) Please check the LCD display of this IP phone, there should be something displayed on the LCD in 1 or 2 minutes.  
If not, please re-check all procedures listed in this section, or contact your dealer of purchase for help.

## Basic Operating Instructions

### Using Soft Keys

There are 11 soft keys on this IP phone (Soft Keys 1 to 6, and A to E). Unlike other keys, the function of soft key is not always the same. It will change in different menu. The function of soft key in every menu will be displayed on the corresponding area of LCD display.

For example, there are 5 soft keys available on main menu:



If you want to execute “Redial” function, just press the second soft key from the left. There are also 5 soft keys located on the right side of LCD display; you can use them just like the soft keys below the LCD display.

## Using Hard Keys

There is another kind of keys on your PLANET video IP phone, which are called as “Hard Keys”. The function of these keys is always the same. Please refer to the table listed below for detailed descriptions of hard keys:

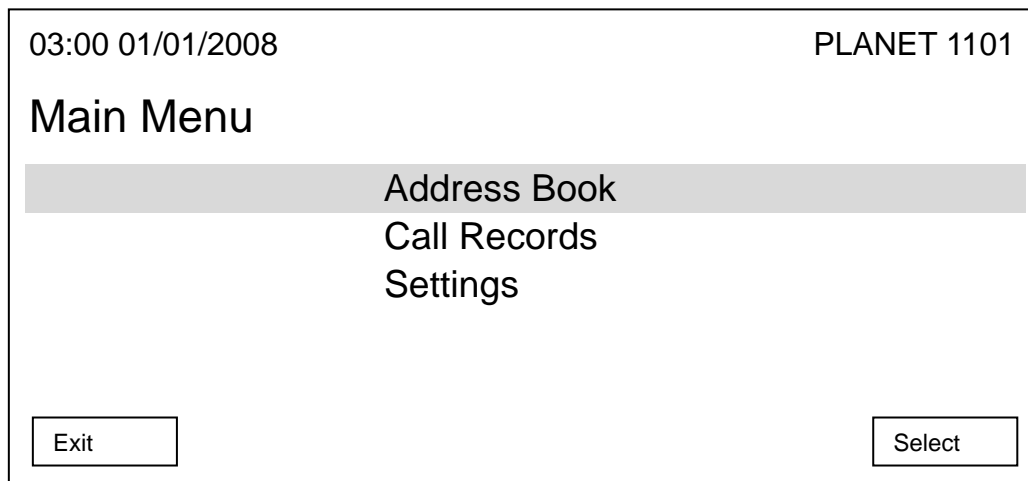
| Item                      | Description  |
|---------------------------|--|
| <b>Numeric Keypad</b>     | Used to input numbers, alphabet, and special characters like * and #.  |
| <b>Brightness Up/Down</b> | Adjust the brightness of LCD display by these two keys immediately.  |
| <b>Redial Key</b>         | Press this key to redial the last number dialed.   |
| <b>TV-Out Switch</b>      | Press this key to toggle TV-out function of this phone. When TV-out function is activated, nothing will be displayed on LCD display, and the content of LCD display will be displayed on the TV set connected to this phone instead. Press this key again to deactivate TV-out function. |
| <b>Mute Key</b>           | Press this key to activate mute function. When mute is activated, remote party will not hear anything from you. Mute key will be illuminated when mute function is activated, press this key again to deactivate mute function.  |
| <b>Camera Key</b>         | Press this key to switch built-in camera on / off. You can switch camera on or off during a call, so remote party will or will not see your image. You can also  |

|                        |  |
|------------------------|--|
|                        | press this call when no call is in progress, and you can see your own image taken by camera. Camera key will be illuminated when camera function is activated, press this key again to switch camera off.  |
| <b>Headset Key</b>     | Press this key to use headset to make or answer phone call, a headset must be connected to this phone before you press this key, or you will not be able to hear anything during the call. Headset key will be illuminated when headset function is activated, press this key again during the call to terminate the call, or you can press headset key to transfer the call to headset when you're using handset or speakerphone. |
| <b>Speaker Key</b>     | Press this key to use speakerphone to make or answer phone call, Speaker key will be illuminated when speakerphone function is activated, press this key again during the call to terminate the call, or you can press speaker key to transfer the call to speakerphone when you're using handset or headset.  |
| <b>Navigation Keys</b> | You can use these 4 keys to move cursor or light bar on LCD display to select the item you want.   |
| <b>OK</b>              | Press this key to make affirmative answer to a question, or enter a submenu.   |
| <b>Volume Key</b>      | You can adjust the volume of ring tone directly by these 2 keys when the phone is not in use, and you can adjust the volume of handset / headset / speakerphone when they are in use.  |

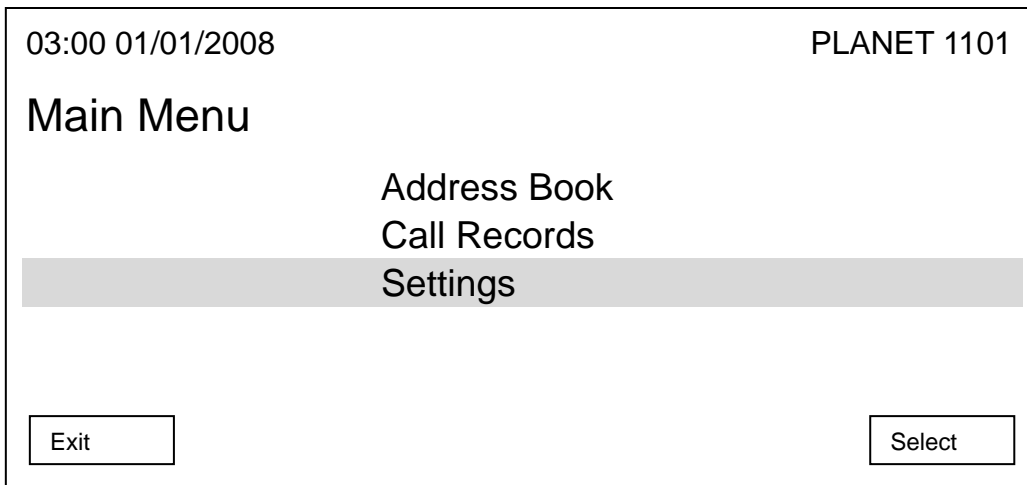
## Using 5-way Joystick

There is a special set of keys on this phone (keys <21> to <25>), which is called as "5-way joystick" (Four directions and 'OK'). You can use left, right, up, and down key to move cursors on LCD display, and press OK key to decide.

For Example, in main menu:



You can press down key to move the cursor down, and the display on LCD display will become:



When the item you want to select is highlighted, press OK key (or “Select” soft key) to select it. If you want to back to previous menu, press “Exit” or “Back” soft key.

#### **Return From Screen Saver**

To protect the LCD display panel, a built-in screen saver will be activated after a certain period of time. You’ll see several color pictures displayed alternately. To return to normal state, simply press any key on the phone, and the key you pressed will not function when screen saver is activated.



## Network Service Configurations

### Configuring Network and monitoring your Video Phone

The ICF-1600 integrates LCD display and web-base GUI that can cover most configurations and machine status monitoring. You can configure and check machine status from 7" LCD display or the GUI system.

#### Network Setup (On LCD Screen)

Before you can use ICF-1600, a valid IP address is required. Please follow the following instructions to setup IP address:

1. Press "Main Menu" key to enter main menu, then use up / down key and OK key to go "Setting" -> "Device Configurations" -> "LAN Configuration".

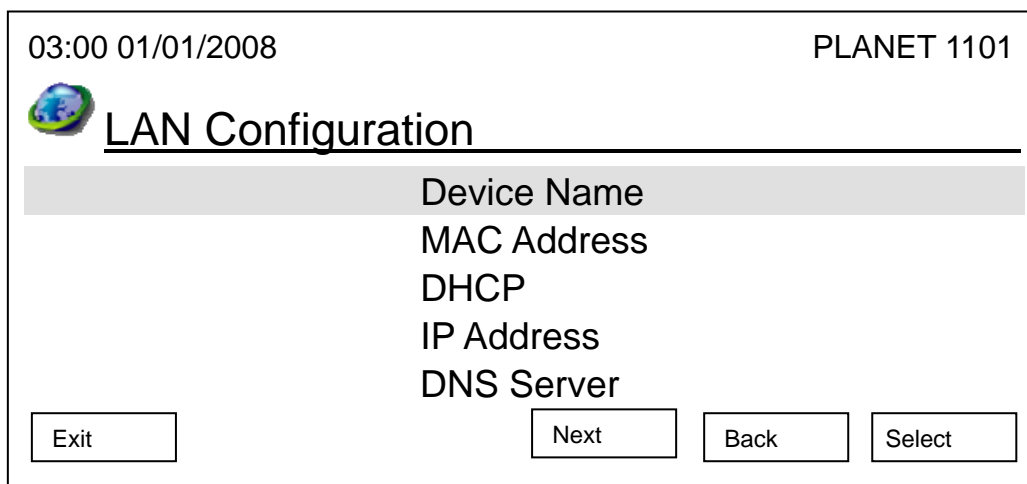
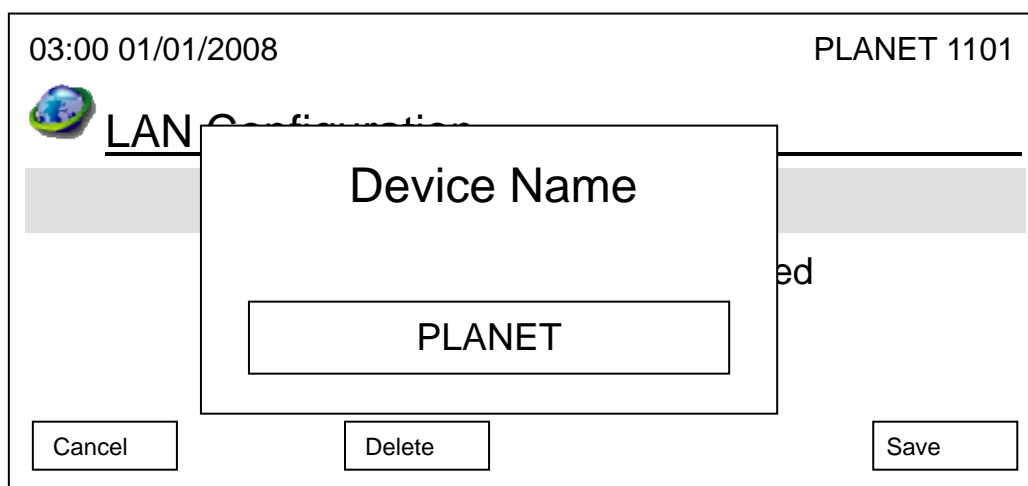


Figure 7. LAN Configuration

2. Please use up / down key to select the setup item you wish to set, then press "OK" key. You can press "Next" key to jump to next page for more setup items, and press "Previous" to back to first page.



## Device Name:



Please input the device name of this video phone here. You can use numeric keypad to input alphabet and number, to erase a character, press “Delete” key; to save new device name, press “Save” key. Or you can press “Cancel” key to keep original device name unchanged.

### ***Hint: How to input number, and alphabet?***

Every number key in numeric keypad area represents a set of number, and / or alphabet. You can press a key repeatedly to select next character for that key. For example, you can press “2” key for 3 times repeatedly to get “c”, and press “5” key for 5 times to get “J”. If you pause between keystrokes, a character will be entered into field, so you can input a new character.

The character set of every key is listed as follow (left to right):

|                             |                         |                             |
|-----------------------------|-------------------------|-----------------------------|
| <b>1: 1</b>                 | <b>2: a b c 2 A B C</b> | <b>3: d e f 3 D E f</b>     |
| <b>4: g h l 4 G H I</b>     | <b>5: j k l 5 J K L</b> | <b>6: m n o 6 M N O</b>     |
| <b>7: p q r s 7 P Q R S</b> | <b>8: t u v 8 T U V</b> | <b>9: w x y z 9 W X Y Z</b> |
|                             | <b>0: 0</b>             |                             |

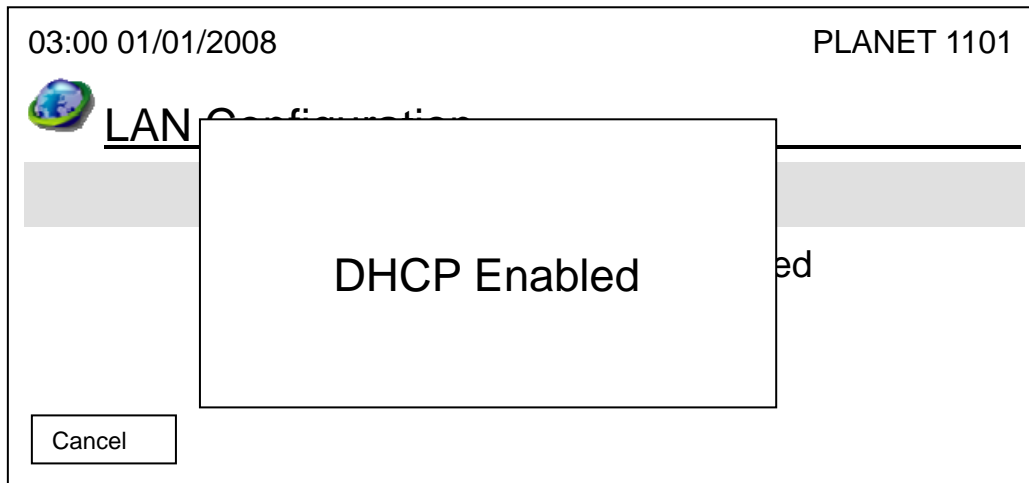
## MAC Address:

MAC address is the network identification of this video phone and can not be changed. However, you can select “MAC Address” item to view the MAC address of ICF-1600.

## DHCP:

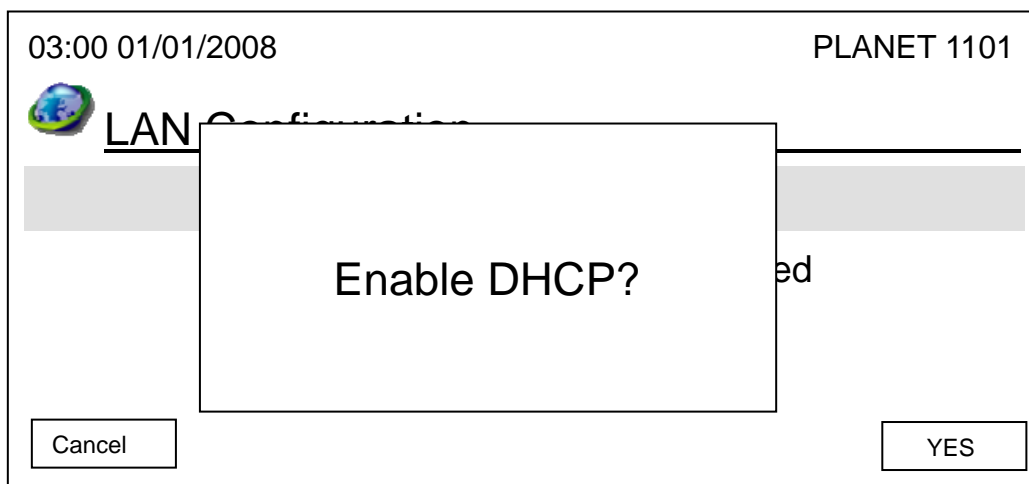
You can activate or deactivate dynamic host configuration protocol (DHCP) function of this phone, so this phone can obtain a valid IP address from the DHCP server on your LAN. To use this function, a working DHCP server must be available. If you’re not sure, please ask your network administrator.

When you selected 'DHCP' and pressed 'OK' key, and the phone is already configured to use DHCP, the following message will appear:

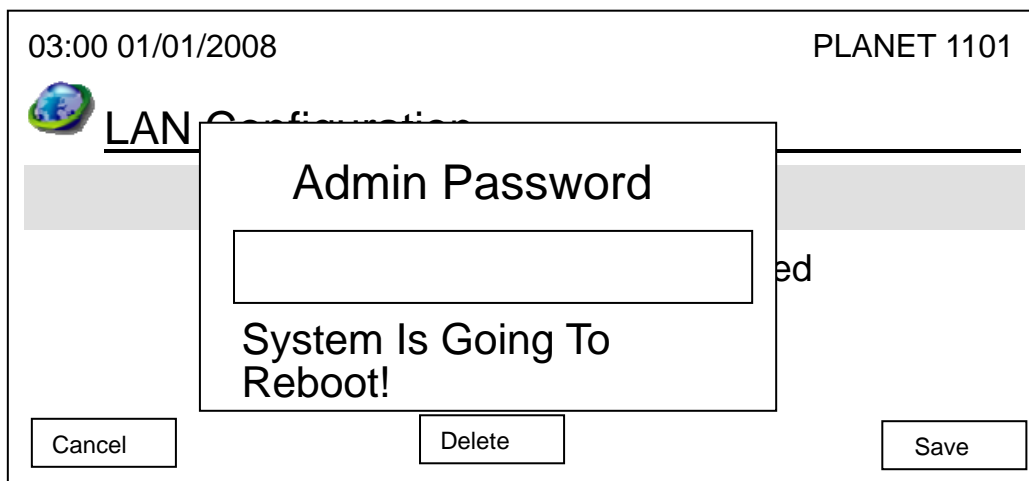


Please press 'OK' or 'Cancel' to exit. If you wish to deactivate DHCP function, please following the instructions given in 'IP address' section to input IP address manually, and DHCP function will be disabled.

The following message indicates that DHCP function is currently disabled:



If you still wish to use manually-assigned IP address, please press 'Cancel'; if you wish to enable DHCP function, please press 'Yes', and the following message will appear:



Please input correct admin password (default value is '123456'), and then press 'Save' key. This phone will reboot after you pressed 'Save' key, please wait for few minutes until reboot procedure is complete.

### IP Address:

When you select IP address, current network setting will be displayed. If you need to change the IP address of this phone, please press "Edit" key after you select this item and you'll see the following information displayed on LCD display:

03:00 01/01/2008 PLANET 1101

IP Address

Subnet Mask

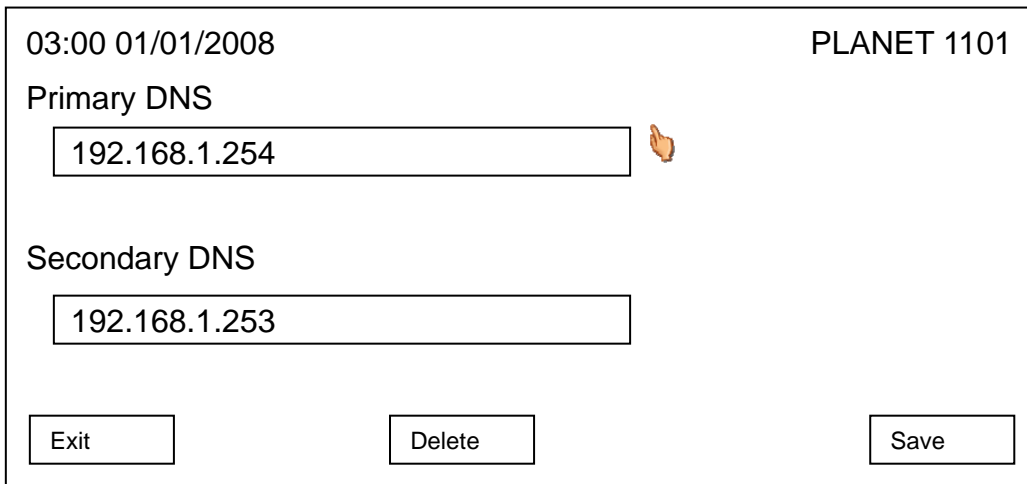
Default Gateway

Please press up/down key to select the item you wish to set, and input the setting information by numeric keypad (press "\*" key for dot), to erase a character, press "Delete" key; to save new device name, press "Save" key. Or you can press "Cancel" key to keep original IP address information name unchanged. After you pressed 'Save' key, you'll be prompted to setup DNS server address:

03:00 01/01/2008 PLANET 1101

Do you want to set  
DNS?

After you pressed 'Yes' key, you'll be prompted to setup DNS server's IP address:



03:00 01/01/2008 PLANET 1101

Primary DNS

192.168.1.254

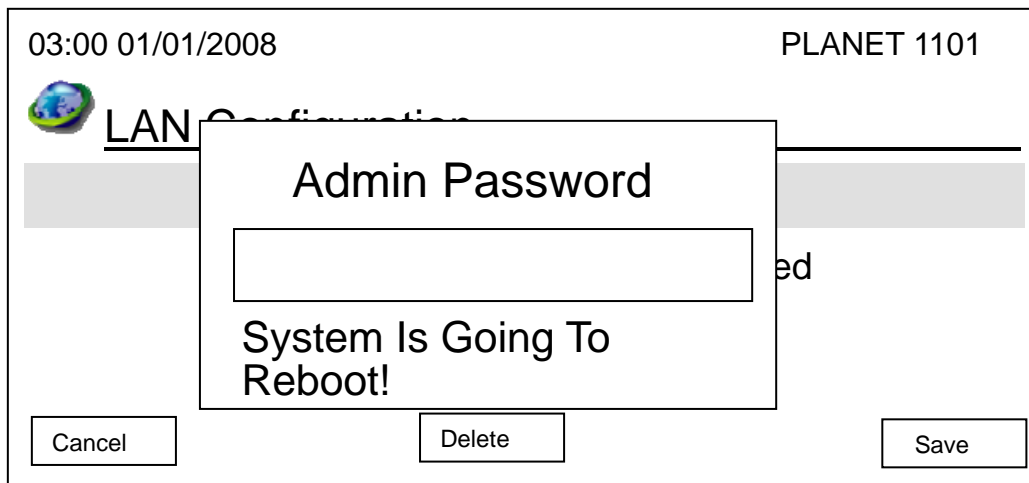
Secondary DNS

192.168.1.253

Exit Delete Save

Please setup the IP address of DNS server, if you didn't setup the IP address of DNS server, many functions of this phone may not working properly. If you don't know the IP address of DNS server, please ask your Internet service provider or network administrator. You can press 'Delete' to remove an inputted character. Press 'Save' key to keep changes or press 'Exit' to keep original settings.

After you pressed 'Save' key, you'll be prompted to input admin password:



03:00 01/01/2008 PLANET 1101

LAN Configuration

Admin Password

System Is Going To Reboot!

Cancel Delete Save

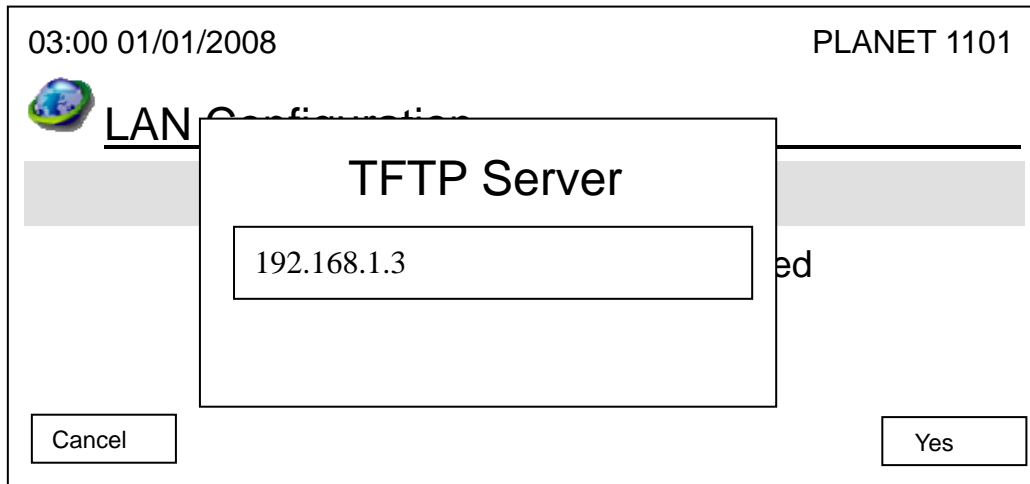
Input correct admin password (default value is '123456') and press 'Save' to reboot the phone, or press 'Cancel' to abort.

## DNS Server:

DNS server address can be modified by web interface only (see next section). However, you can select this item to view the DNS setting, and press "Cancel" key to back to previous menu.

## TFTP Server:

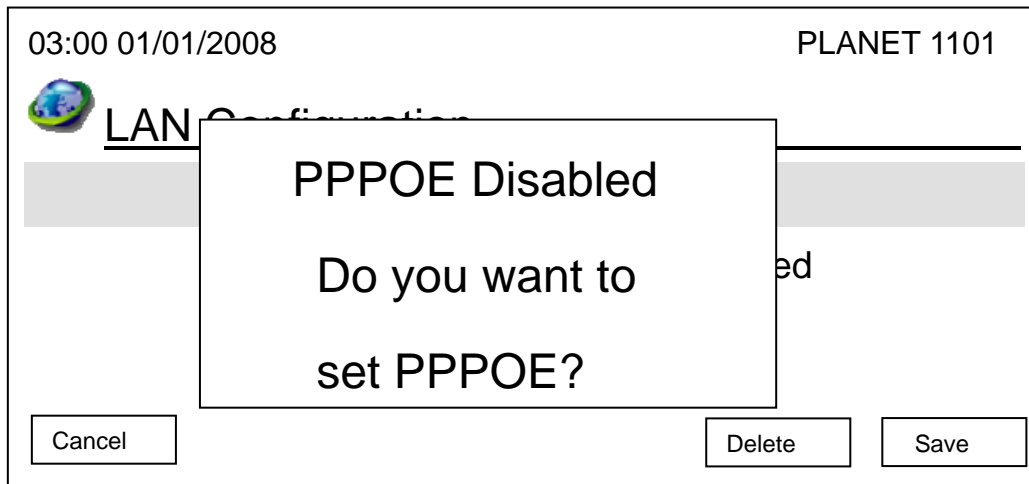
TFTP Server is used to upgrade the firmware of this video phone. You can check the address setting of TFTP server by selecting this item. Press “Cancel” key to back to previous menu.



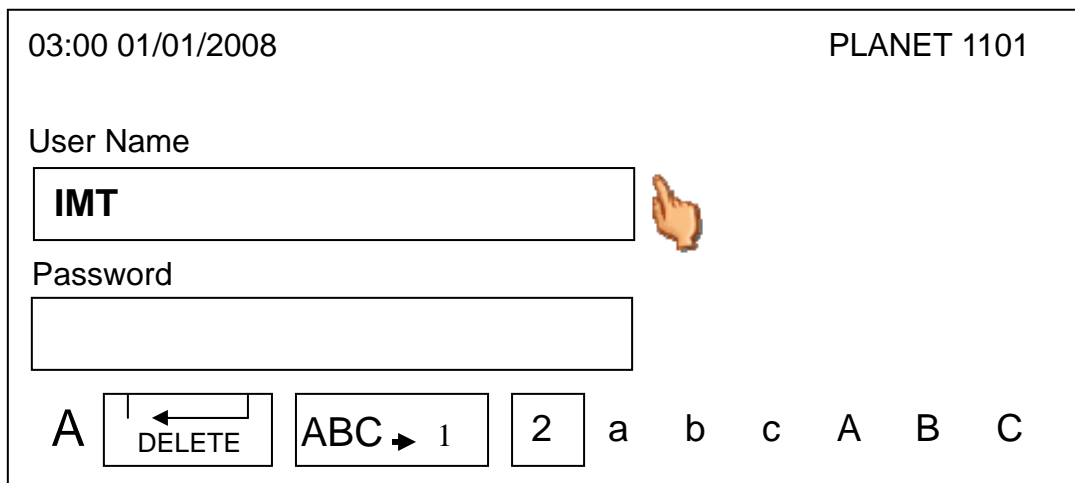
**PPPoE:**

This phone supports PPPoE (PPP over Ethernet) protocol, if your Internet service provider requires you to connect to Internet by PPPoE, you can use this function to establish Internet connection.

If PPPoE is not configured currently, the following message will appear, to ask you if you want to enable and setup PPPoE:

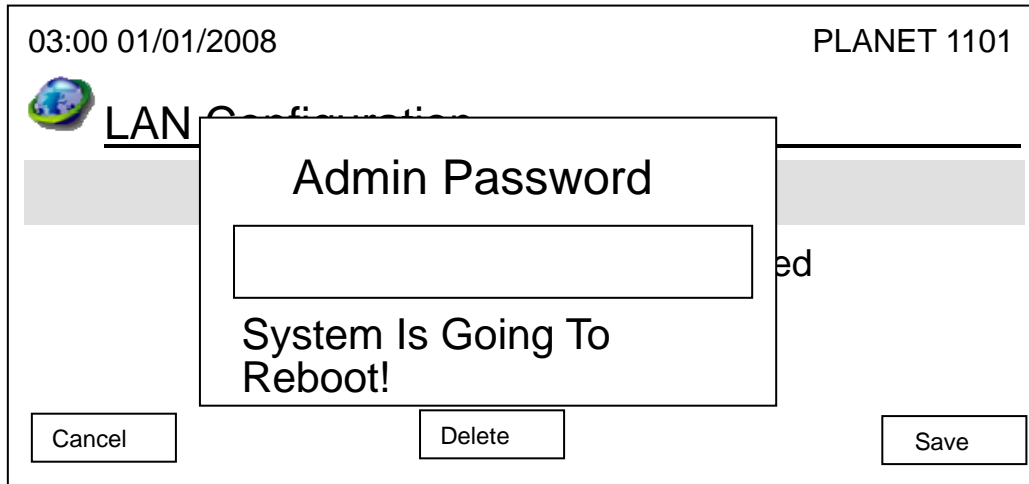


If you want to enable PPPoE now, please press 'Yes' key, and you'll be prompted to input PPPoE user name and password:



Please use up / down key to move hand icon, and press 'OK' key to input PPPoE user name or password. Please note that you can only input English alphabets or numbers here. After you inputted user name or password, please press 'OK' key again to quit text input mode (the text input bar at the bottom of display will appear), then press 'Save' key to save current settings. If you changed your mind and want to keep PPPoE settings untouched, please press 'Exit'.

If you changed PPPoE settings, you'll be prompted to input admin password:



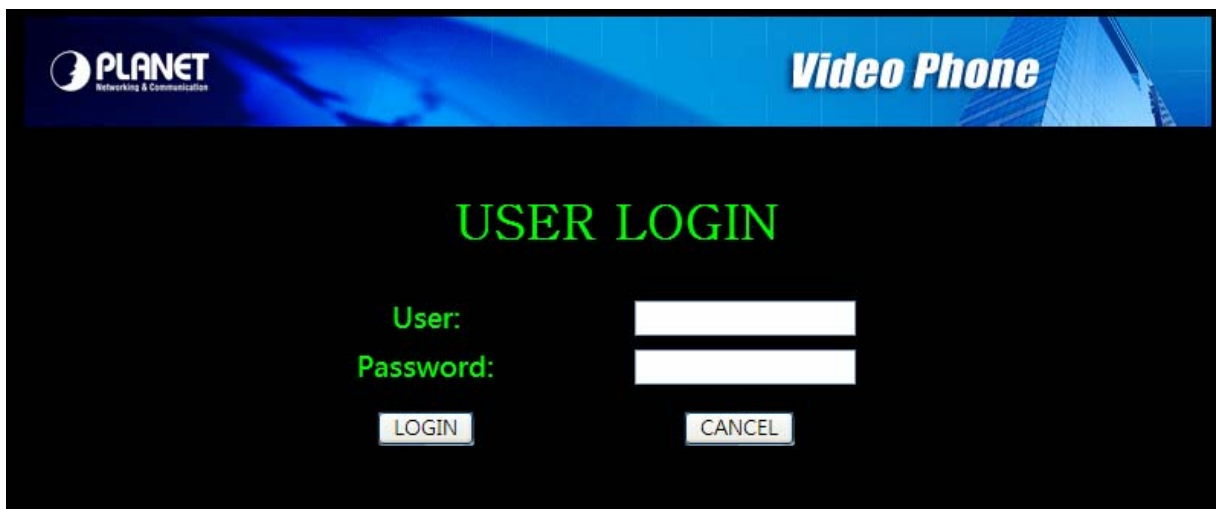
## Network Setup (Web Interface)

To start ICF-1600 web configuration, you must have one of these web browsers installed on computer for management

- Microsoft Internet Explorer 6.0 or higher with Java support

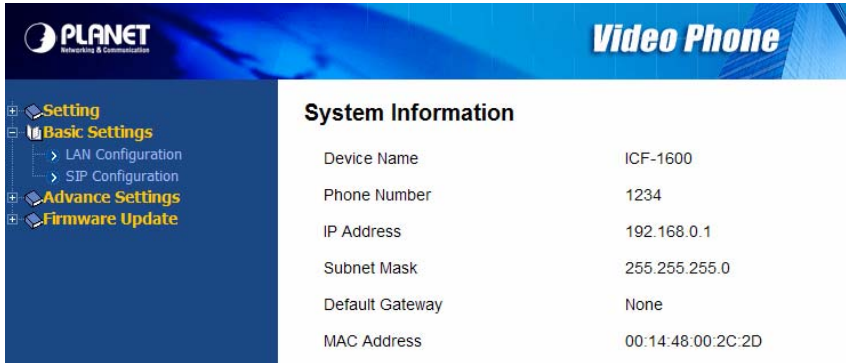
Default LAN interface IP address of ICF-1600 is **192.168.0.1**. You may now open your web browser, and insert **http://192.168.0.1** in the address bar of your web browser to logon ICF-1600 web configuration page.

ICF-1600 will prompt for logon username/password, please enter: **root / null** (no password) to continue machine administration and then follow the following instructions.

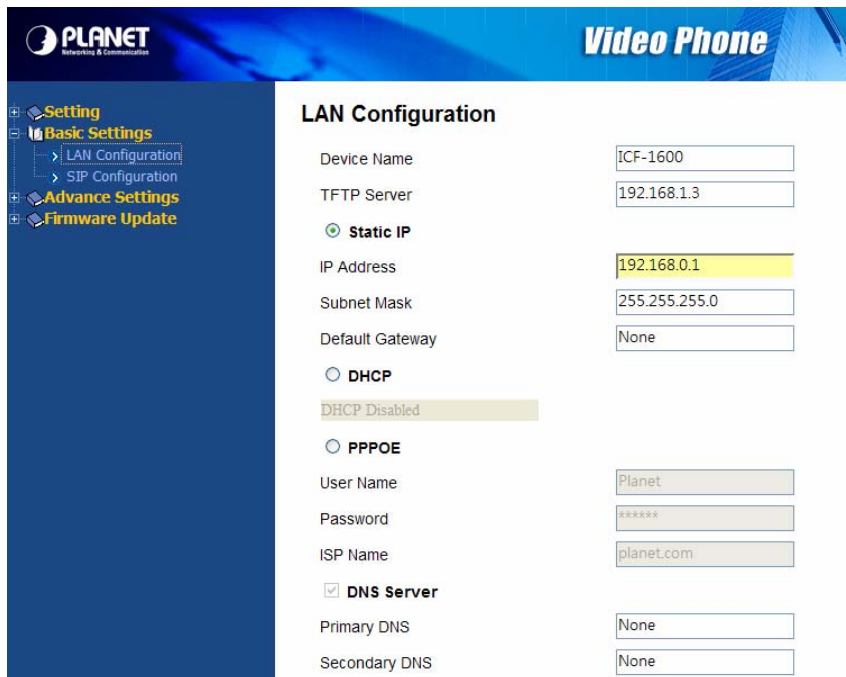


**Note**

Please locate your PC in the same network segment (192.168.0.x) of ICF-1600. If you're not familiar with TCP/IP, please refer to related chapter on user's manual CD or consult your network administrator for proper network configurations.



Click "Basic Setting" link on the left, then click "LAN Configuration".



Please input the following information, and click "Apply" button on the bottom of page to save changes:

**Static IP:**

Use static IP mode. Please input IP address, subnet mask, and default gateway here.

**DHCP :**

Use DHCP, obtain IP address information from server automatically.

**PPPoE :**

Use PPPoE mode. Please input username and password, and select authentication type here (ISP name is optional).

**DNS Server :**

Please input the IP address (not host name) of DNS server here. At least one DNS server is required, and this option is only available in static IP mode.

**Device name:**

name of this IP phone, like "PLANET" or any word you like.

**TFTP Server:**

Input the address of TFTP server here. If you don't have one, just left it blank.



# Chapter 4

## VoIP Setup



### Configuration VoIP and System Settings for your Video Phone

VoIP server plays an important role in VoIP environment, it helps all IP phones to communicate with each other. VoIP server settings should be provided by service provider, please obtain them from your VoIP service provider first.

#### VoIP Setup (On LCD Screen)

1. Press “Main Menu” key to enter main menu, then use up / down key and OK key to go “Setting” -> “Device Configurations” -> “SIP Configurations”.

03:00 01/01/2008 PLANET 1101

### SIP Configurations

SIP Registration  
SIP Proxy Server

Exit Back Select

2. Please use up, down, left, and right key to move cursor to the setup item you wish to set, then input value by numeric keypad. You can press ‘Delete’ key to erase existed characters. After all required values are entered, please press ‘Save’ key to save change.

03:00 01/01/2008 PLANET 1101

### SIP Registration

Phone Number Authentication User

1101 1101

SIP Register Server Password

192.168.1.2 \*\*\*\*

Exit Delete Save

If any setting in this menu is changed, and 'Save' key is pressed, you'll be prompted to enter admin password to prevent unauthorized access. Please enter admin password by numeric keypad, then press 'Save' key. The phone will reboot and changes will take effect after reboot procedure is complete.

03:00 01/01/2008 PLANET 1101

**SIP Registration**

Phone Number: 1101

SIP Register Server: 192.168.1.2

User Name: [ ]

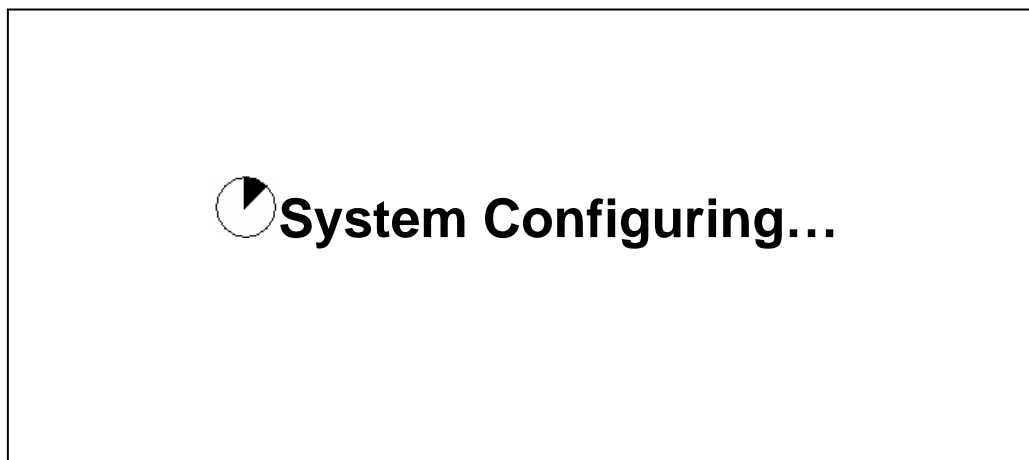
Password: \*\*\*\*\*

Exit Delete Save

**Admin Password**

**System Is Going To Reboot!**

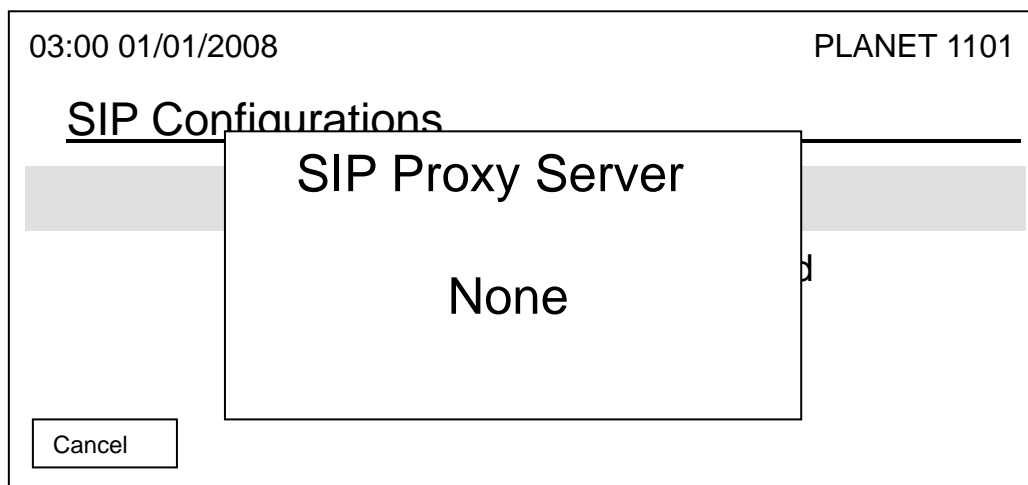
After you pressed 'Save' key, the following message will appear:



The phone is not re-configuring, please wait for 10 to 15 seconds.

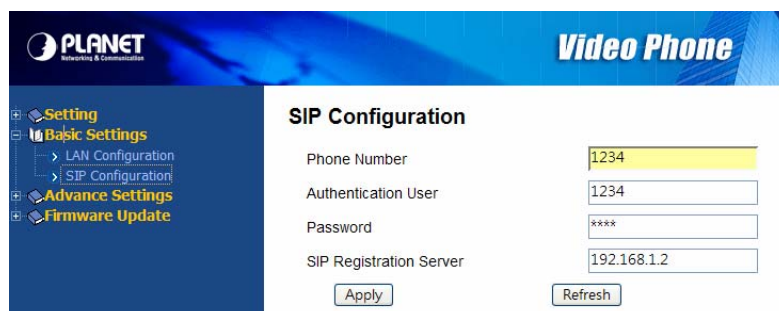
3. If SIP proxy server is required in your network environment, please proceed to section 2-5 and use web interface to setup SIP proxy server. You can check current SIP proxy server setting by selecting 'SIP Proxy Server' in step 1.

Please ask your service provider or network administrator to know if you need SIP proxy server or not.

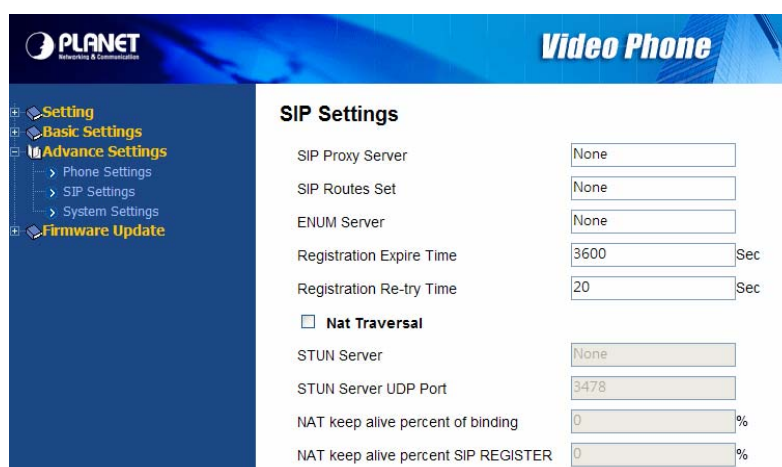


### VoIP Setup (Web Interface)

Please refer to previous section to connect to the IP phone by web browser, login onto web interface, and then follow the following instructions to configure VoIP setting:



Click "Basic Setting" link on the left, then click "SIP Configuration". Please input the phone number, user name, password, and the IP address / host name of SIP registration server, then click "Apply" button to save changes.



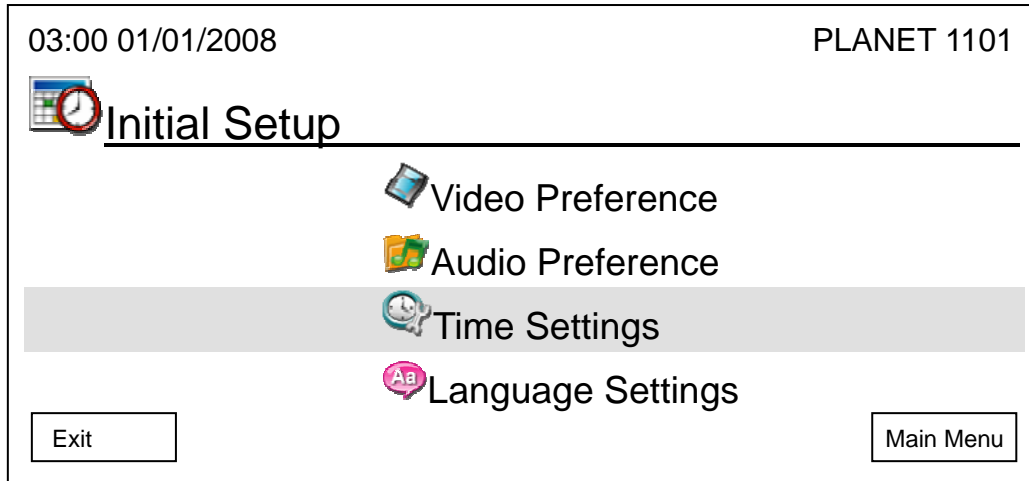
If the use of SIP proxy server and STUN server is required in your LAN or requested by service provider, please click "Advance Settings" link on the left, and then click "SIP Settings". All advanced settings about SIP proxy server and STUN server can be found here.

Please fill all fields in this page, and then click "Apply" button to save changes.

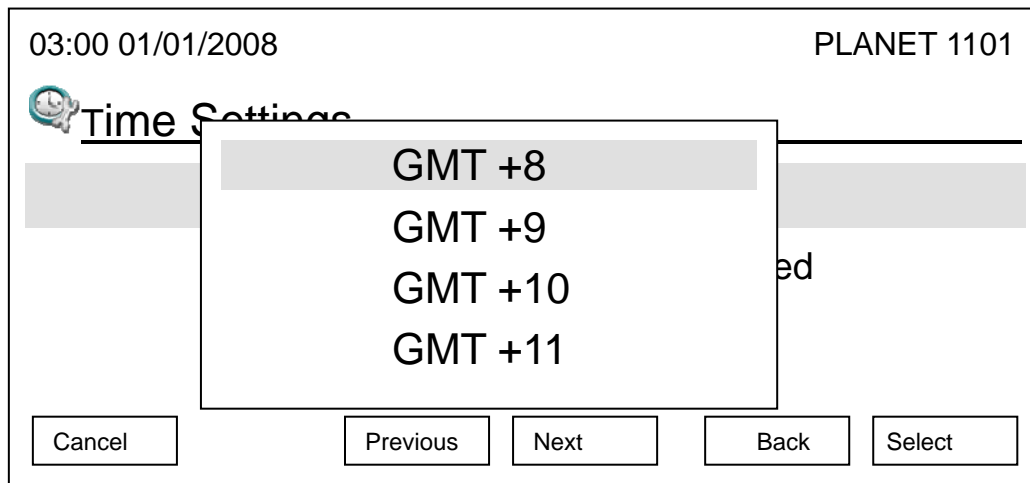
## Data / Time Setup

Time and date will be displayed on the upper-left corner of LCD display, and it will be synchronized with SIP server automatically, so you don't need to input current date and time by yourself. However, there are several options available. Please follow the following instructions to change these options:

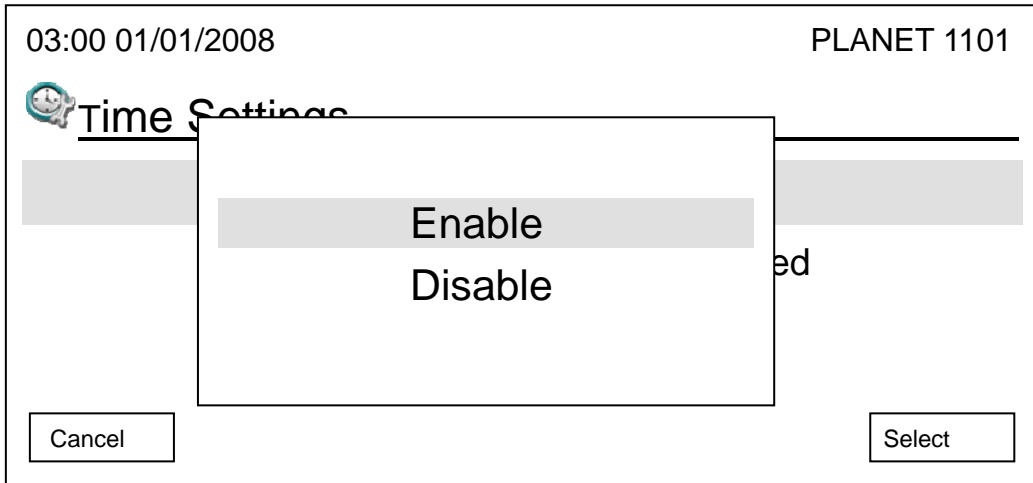
1. Press "Main Menu" key to enter main menu, then use up / down key and OK key to go "Setting" -> "Initial Setup" -> "Time Settings".



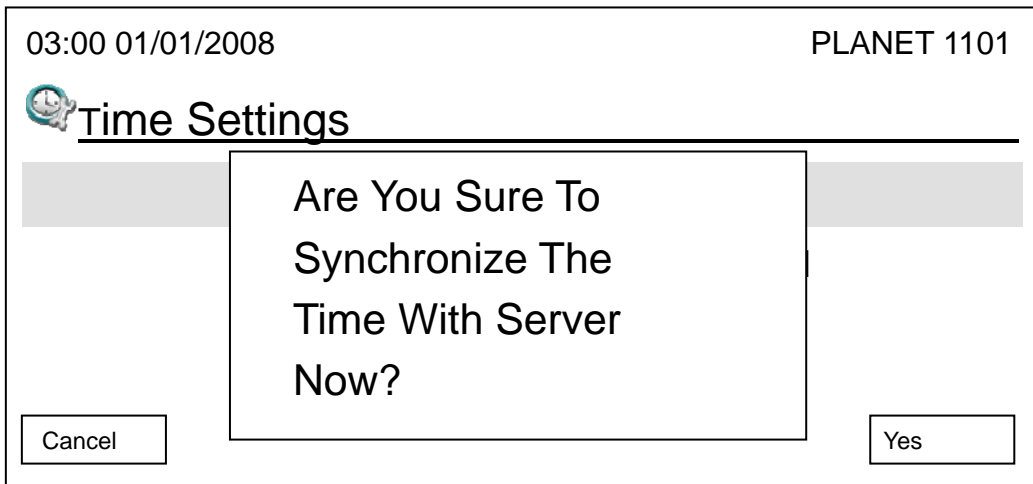
2. There are four options here, as shown on LCD display. You can change time zone setting in "Time Zone Setting". Each page has 4 time zones; you can press "Up" and "Down" key to select time zone, and if the time zone is not displayed, press "Previous" and "Next" key to switch to previous or next page, then press "OK" or "Select" key to save setting, to abort, press "Cancel" key.



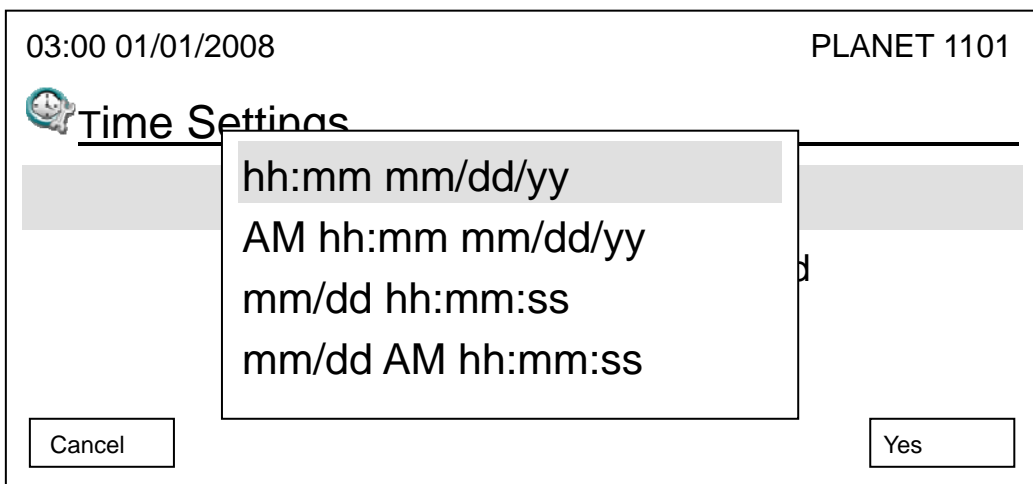
3. You can also activate or deactivate daylight saving. Select "Day Light Saving Enabled" item and you can enable or disable daylight setting here.



4. This phone will obtain current date and time automatically. However, if you found the date and / or time is incorrect, you can force the phone to get date and time from time server again. To do so, simply select "Synchronization" item, then press "Yes" button.



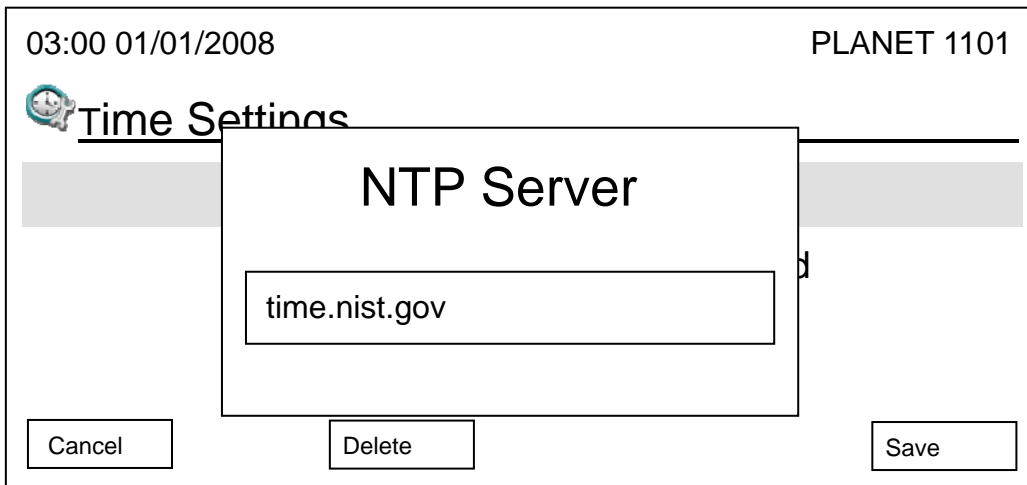
5. This phone provides 4 date and time display format to choose from. If you want to change display format, select "Date Format" item, then pick a date / time format.



**Note**

Hint: The Character in date/time format represents:  
hh:mm:ss = hour:minute:second    mm/dd/yy = month/date/year.

- 6. This phone also supports NTP (Network Time Protocol) function, and you can set default NTP server here, so this phone will synchronize its time with time server to keep correct time. Default time server is 'time.nist.gov', you can use this setting. However, if you wish to use your own time server, please select 'NTP Server' and input the NTP server address, then press 'Save' to use new NTP server.



**Accepting and Making Phone Call**

Before user can accept and make phone call, please check the icon located at the left corner of LCD display:

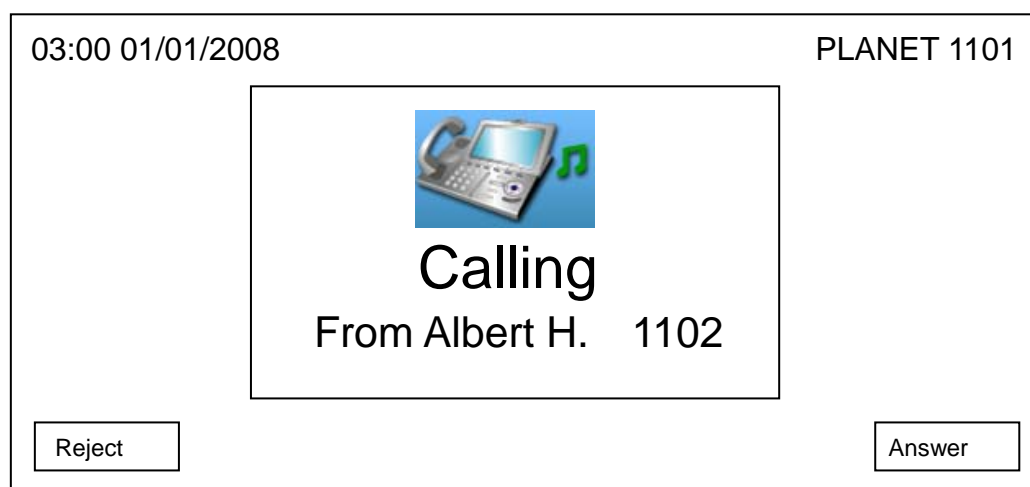


If you see this icon on the left of LCD display, the registration to VoIP Server is not successful, please re-check SIP settings, and make sure that VoIP server is reachable by the network you connected to.

If you see this icon on the left of LCD display, the connection between the phone and network is lost. Please re-check or re-build the network connection, until this icon is disappeared.

## To accept phone call:

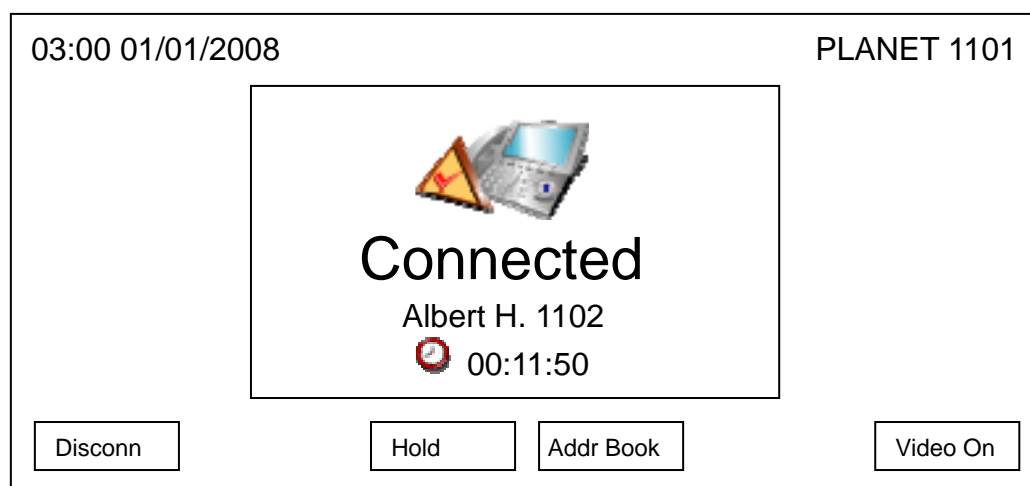
When someone's calling, you'll hear ring tone, and see the following message displayed on LCD display, and the message indicator will flash:



The phone number of remote party will be displayed on LCD display (Name of remote party will be displayed too, if the phone number is present in address book). When you got a call, you have 3 choices:

- A. Pick up the handset to use handset to answer the call
- B. Press "Speaker" or "Answer" key to use speakerphone to answer the call. You can also press "Headset" key to answer the phone by headset, if you have a headset and it's connected.
- C. If you don't want to accept the call, you can press "Reject" key, or you can just ignore it until the ring stops by itself

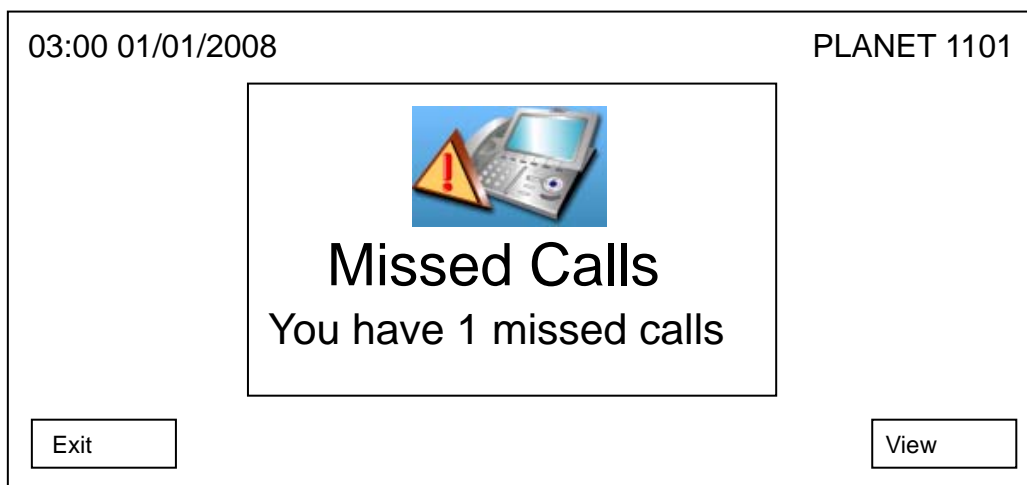
After you answered the call, the following information will be displayed on LCD display:



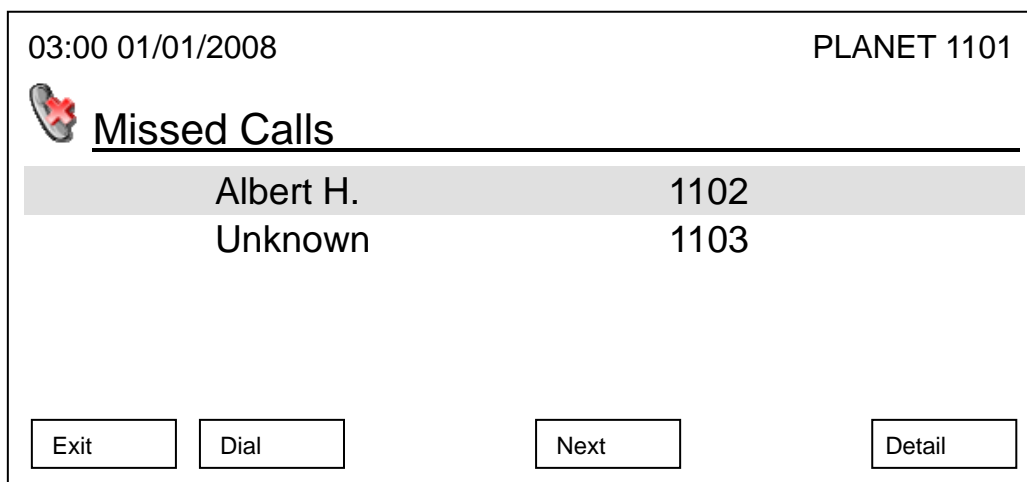
### Note

The name of remote party will be displayed only when the phone number and user's is stored in the phone book of this video. If not, "Unknown" will be displayed instead.

The name and phone number of remote party will be displayed, and a timer will start counting until the call is ended. If no one answers the call, the number of missed calls will be displayed on LCD display:



You can press “Exit” to remove the message from LCD display, or press “View” to see detailed information about missed calls:



You can use following keys to view missed call records:


|                     |  |
|---------------------|--|
| Up / Down key       | Select record  |
| Exit key            | Quit missed call record and back to “Call Records” menu.   |
| All key             | Records” menu.   |
| Dial key            | Dial selected phone number.  |
| Next / Previous key | Move to next or previous page of missed call record.   |
| Detail key          | View detailed information about selected call. If you pressed “Detail” key in missed call menu, you will see following information displayed on LCD display. |





03:00 01/01/2008
PLANET 1101


---

### Call Detail

 Albert H.

 1102

 00:42:40 01/01/2008





 00:00:00

Exit

Dial

Delete

There are four items in this menu, they are:

|   |                              |
|---|------------------------------|
|  | Name of remote party         |
|  | Phone number of remote party |
|  | Time and date called         |
|  | Duration of call             |

And you can use these keys in this menu:

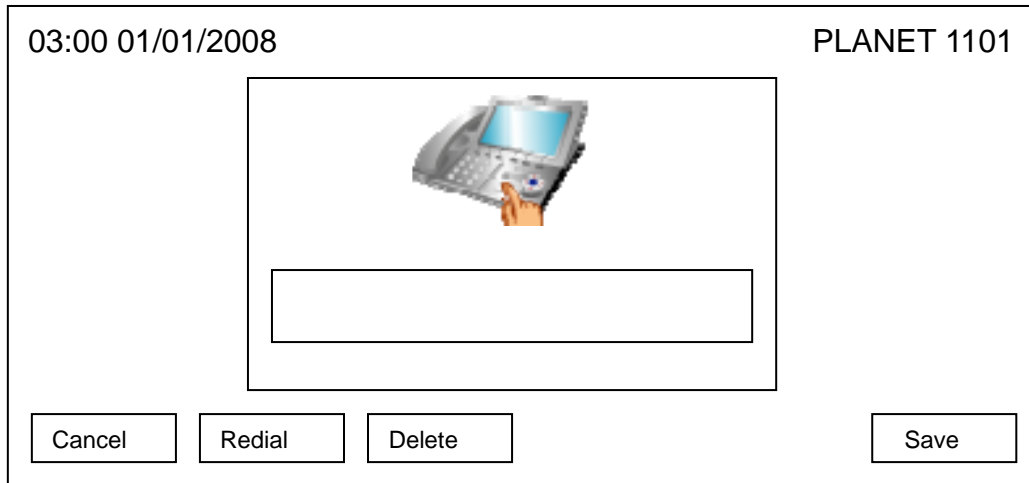
|        |   |
|--------|---|
| Exit   | Back to previous menu   |
| Dial   | Dial the number of remote party   |
| Delete | Delete this call record. When you press this key, a message window will appear on LCD display and ask for confirmation. You can press "Yes" key to confirm, or press "Cancel" key to abort. |

### To make phone call :

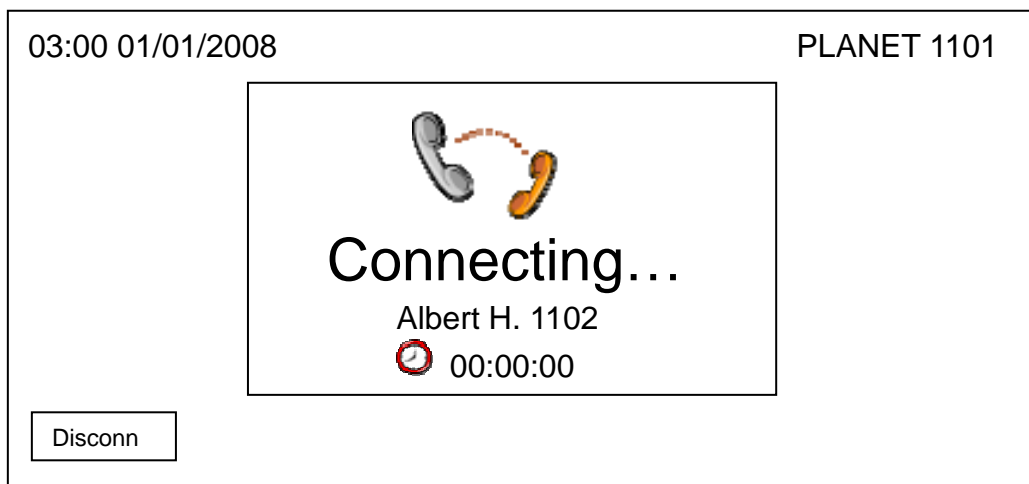
There are 3 ways to make an outgoing phone call:

- a. Lift handset to use handset
- b. Press "Speaker" key to use speakerphone
- c. Press "Headset" key to use headset (headset must be connected to the phone first)

And you'll see following message displayed on LCD display:



Please dial the phone number you want to reach now, and wait for the call to be connected. You can append a “#” key after the number you dial, this will shorten the time you need to wait. You’ll hear ring-back tone while this phone is contacting remote party, and see the following message displayed on LCD display:



The timer will only start counting after your remote party answers the call. If you want to abort before remote party answers the call, you have 3 ways:

- a. Put handset back
- b. Press “Speaker” or “Headset” key (if you’re using speakerphone or headset)
- c. Press “Disconn” key

Or you can press following keys after you lift handset / press “Speaker” or “Headset” key:

|        |  |
|--------|--|
| Cancel | Cancel the dial-out  |
| Redial | Redial last dialed phone number automatically  |
| Dial   | After any number is entered, the second softkey will become “Dial”. You can press this key after all number has been entered, this will shorten the time you need to wait. |
| Delete | Remove a dialed number   |
| Save   | Save the phone number you just entered to address book   |

After you pressed "Save" key, you'll see following message displayed on LCD display:

03:00 01/01/2008 PLANET 1101

Add New Entry

Sex:

Name:

Number:

You will see a hand icon displayed on LCD display, which indicates the field you're currently entering data, and you can press up / down key to move hand icon and select the field you want to enter data:

---

|        |   |
|--------|---|
| Sex    | Press left / right key to choose sex of this person               |
| Name   | Press number keys 0 to 9 to input the name of this person         |
| Number | Press number keys 0 to 9 to input the phone number of this person |

---

You can press "Delete" key to remove a character or number, and press "Save" key when you finish. You can also press "Cancel" key to return to previous menu.

After the remote party answers the call, you'll see following message displayed on LCD display:

03:00 01/01/2008 PLANET 1101

Line1  
 Linda  
 1103  
 00:06:07

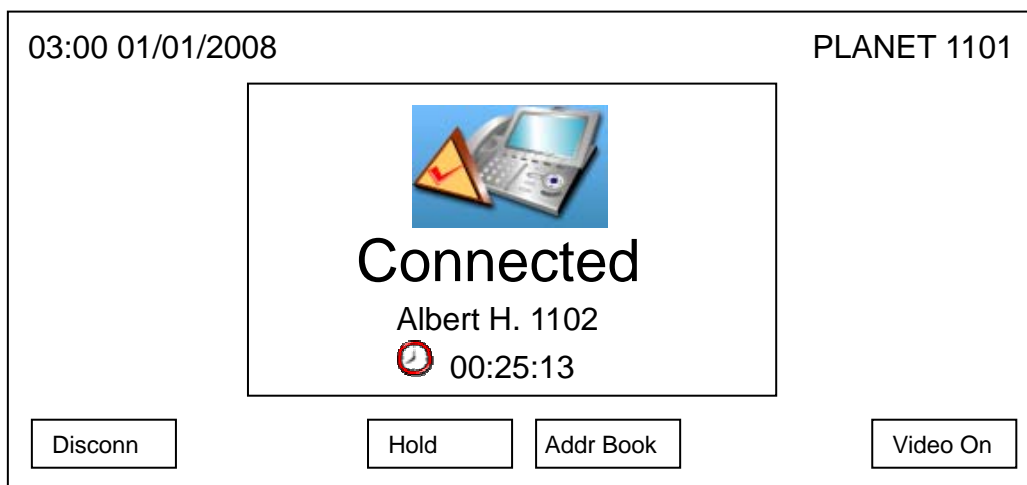
A

B





**Note**

If you don't want to be seen by remote party, you can push the camera lid to the left, to prevent your image being sent accidentally.

There are 2 video display areas on LCD display: Area “A” displays the image of remote party, and area “B” displays the image of you. If remote party does not support video, nothing will be displayed in area A; if you switched video off, nothing will be displayed in area B. When both remote party and you switch video off / do not support video, the LCD display will be look like this:



And there are 4 information items on LCD display, which are:

|   |                                  |
|---|----------------------------------|
|    | Line number in use               |
|   | The name of remote party         |
|  | The phone number of remote party |
|  | Call timer                       |

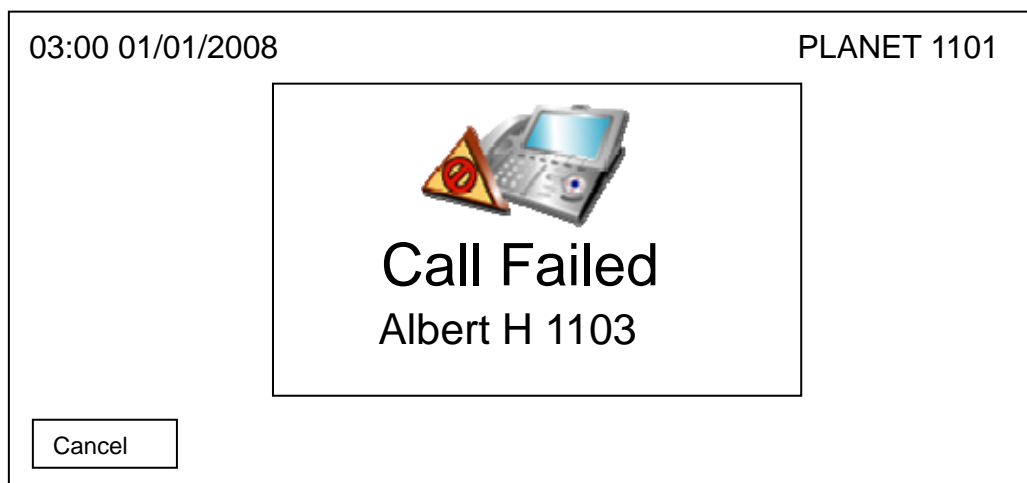
You can use these keys during the call:

|                |  |
|----------------|--|
| Disconn        | Ends the call  |
| Hold           | Put remote party on hold, and remote party will not hear anything from you during hold. Refer to chapter 2-8 for detailed information.                                   |
| Addr Book      | Go to address book menu. Refer to chapter 3-1 for detailed information   |
| Video On / Off | Start or stop sending video. When remote party does not support video, or network is slow, you can switch video off to save bandwidth, which will improve audio quality. |
| Mute           | Switch the microphone off, remote party will not hear anything from you; to resume, press “Mute” key again.  |
| Camera         | Switch the camera on your phone on or off  |
| Headset        | Switch to headset during a call if you’re using headset or speakerphone.   |
| Speaker        | Switch to speakerphone during a call if you’re using headset or handset.   |

## If the remote party is unreachable:

If you dialed a wrong phone number, remote party is busy, or there's any technical problem with remote party, you'll see the following message displayed on LCD display. Please re-check the phone number again, or try again later.

(Press "Exit" key to remove the message)



### Note

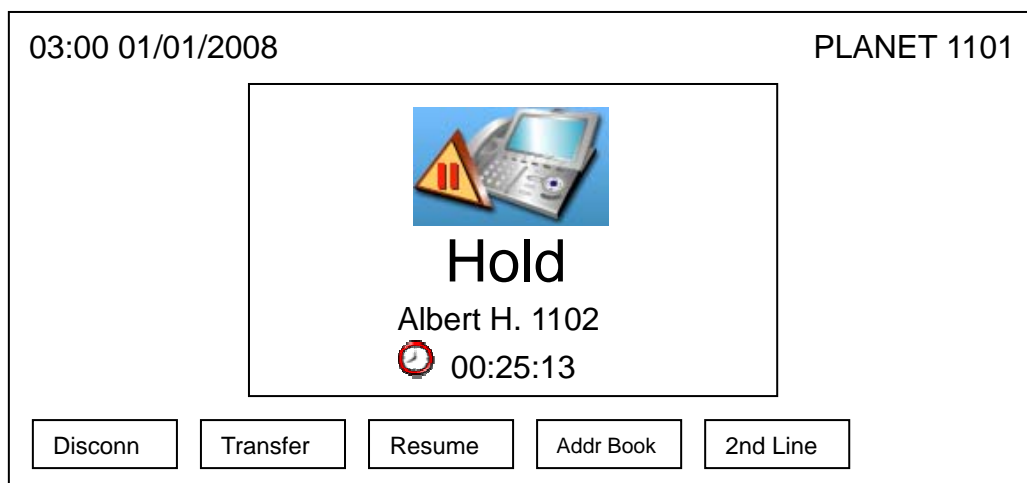
If ICF-1600 is connected to TV, you can press "TV-OUT" key to display the image of LCD display on television. Please note that nothing will be displayed on LCD display when you're using TV-Out function, and this is not a malfunction.

## Holding and Transferring a Call

When a call is established, "Hold" key will appear on LCD display. Detailed descriptions will be discussed in this chapter.

### Holding a call

During a call, press "Hold" key, and the following message will be displayed on LCD display:



During hold, remote party will not hear anything from you, and you can use these keys during hold:

---

|           |   |
|-----------|---|
| Disconn   | Ends the call   |
| Transfer  | Transfer the call to another number (see below)   |
| Resume    | Resume the call (cancel hold)   |
| Addr Book | Go to address book menu, refer to chapter 3-1 for detailed information  |
| 2nd line  | Make an outgoing phone call to another number, and keep remote party on hold until the second call ends (see below) |

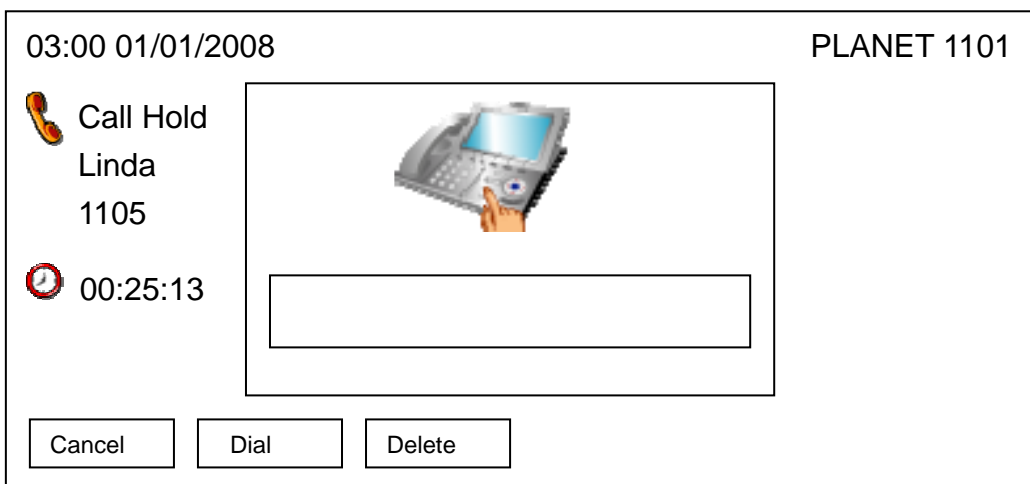
---

When you press “Transfer” key, you’ll see following message displayed on LCD display:



You can transfer current phone call to another phone number. To do so, input phone number you wish to transfer to, and press “Transfer” key. You can press “Delete” key to remove a number, or press “Cancel” to abort and return to previous menu.

If you press “2nd line” key, the following message will be displayed on LCD display:

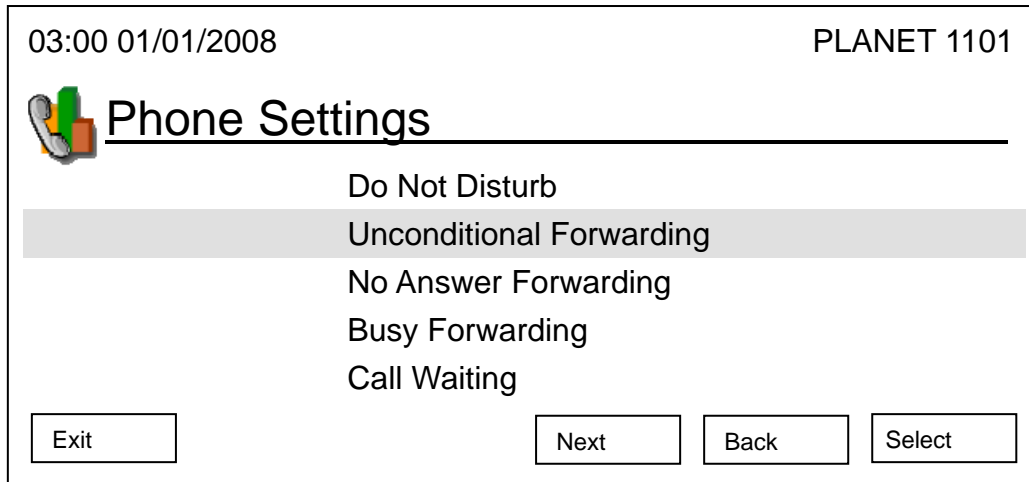


You can make outgoing phone call to a new phone number here, and the remote party will be still on hold. After you entered the phone number, press “Dial” key. You can press “Delete” key to remove a number, or press “Cancel” to abort and return to previous menu. When the second call end, you’ll back to hold menu.

## Auto Call Forwarding

If you're away from your phone, you can use this function to forward all incoming call to a new phone number, so you can accept phone call on another phone:

1. Press "Main Menu" key to enter main menu, then use up / down key and OK key to go "Setting" -> "Phone Settings"

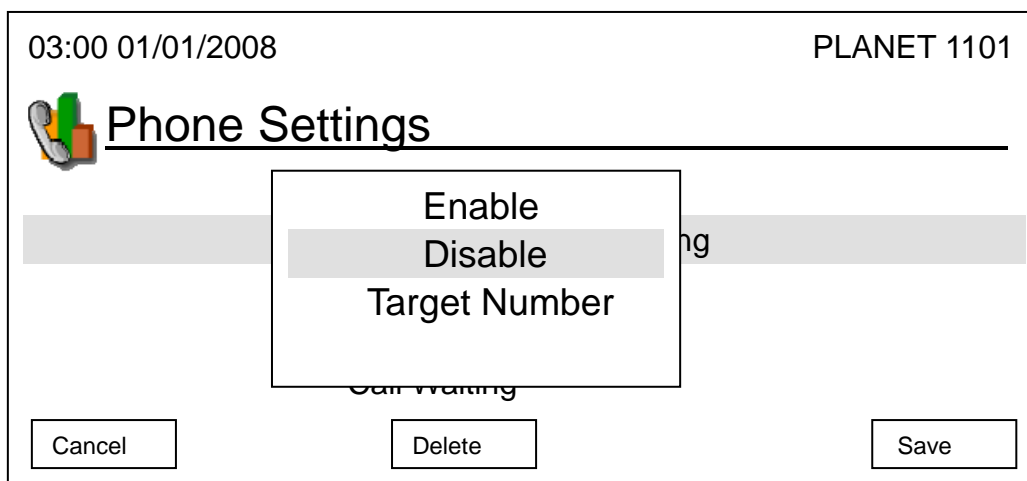


There are 3 kinds of call forwarding:

- a. Unconditional forwarding: Forwards every phone call to another phone number, regardless the state of this phone
- b. No answer forwarding: Only forwards incoming phone call to another phone number when no one answers the phone
- c. Busy forwarding: Only forwards incoming phone call to another phone number when the phone is in use

Please select the forwarding type you wish to use by up / down key, and press "OK" key to setup:

When you select any of forwarding type, you'll see the following message displayed on LCD display:

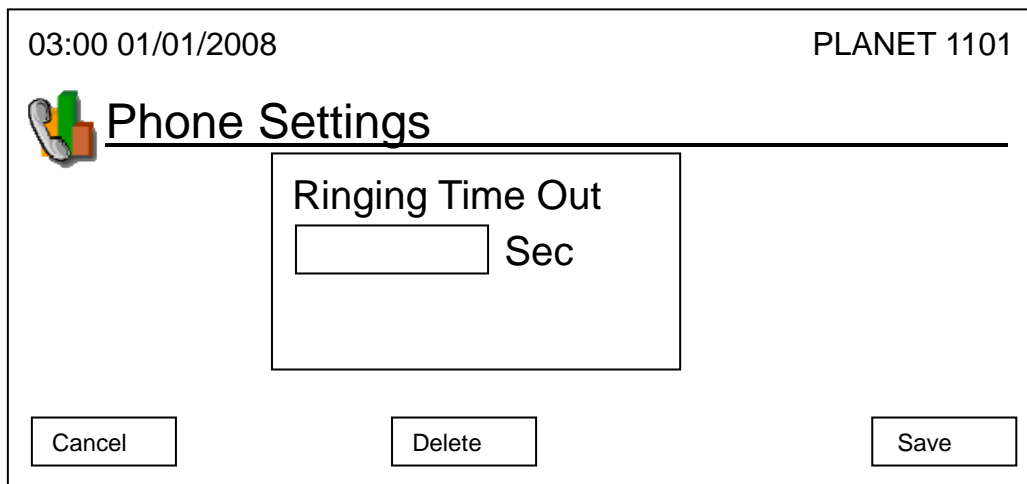


Press up / down key to enable / disable call forwarding. If you select "Enable", you'll be prompted to enter target phone number. Press "Save" after your choice is made, and you can press "Delete" to remove a number you entered, or press "Cancel" to abort and back to previous menu.

For no answer forwarding, default ringing timeout setting is 30 seconds, which means if no one answer the call within 30 seconds, no answer forwarding function will be activated. You can change this setting by following procedures:

Press "Main Menu" key to enter main menu, then use up / down key and OK key to go "Setting" -> "Phone Settings" -> "Ringing Timeout", then press "OK" key.

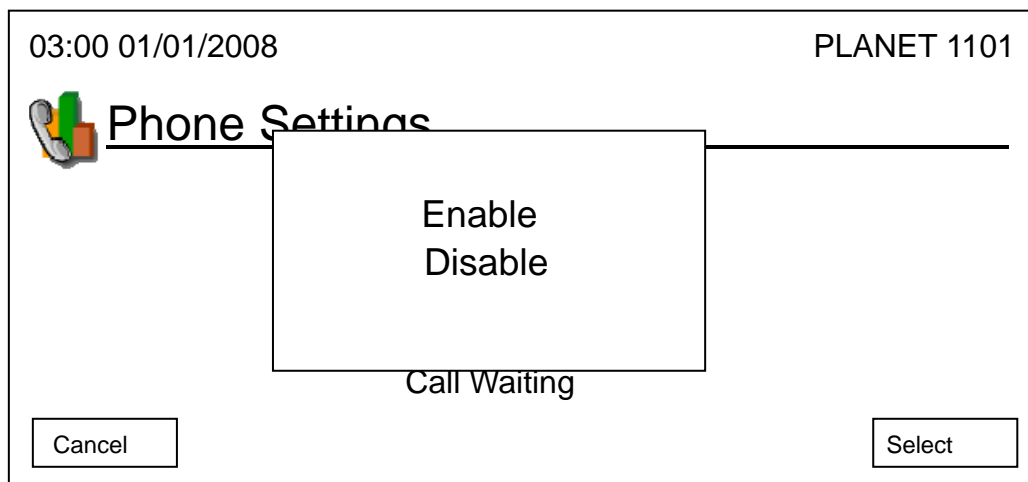
Please press "Delete" key to remove numbers, and input a new timeout setting by numeric keypad, then press "Save" key to save changes.



### Auto Call Rejection (DND Function)

If you don't want to accept call because of certain reason, you can activate Auto Call Rejection (DND) function: This function rejects all incoming call automatically, remote party will think your phone line is busy. You will not be able to accept any incoming phone call in this mode.

To activate DND function, please follow the following instructions:





Press "Main Menu" key to enter main menu, then use up / down key and OK key to go "Setting" -> "Phone Settings" -> "Do Not Disturb", you'll be prompted to select "Enable" or "Disable" DND mode. Press up / down key to make choice and press "OK" or "Select" to save change, or press "Cancel" to abort and back to previous menu.

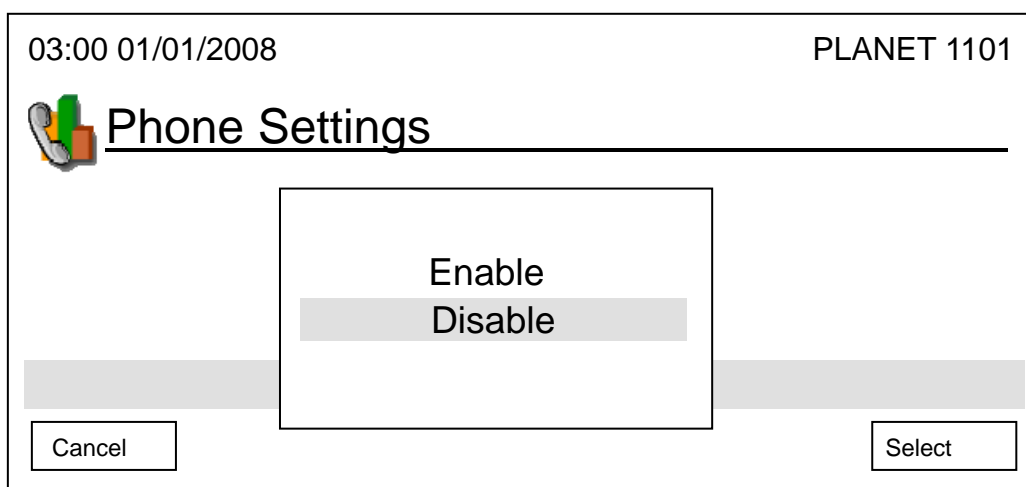
### Note

It's not recommended to switch the phone off or disconnect network cable if you just don't want to accept call, because you can still check the phone number of incoming call in DND or ringer mute mode.

## Call Waiting

When the phone is in use, this phone allows another incoming call to interrupt the progressing call, and you can decide you want to accept new call or not. You can also decide to use this function or not.

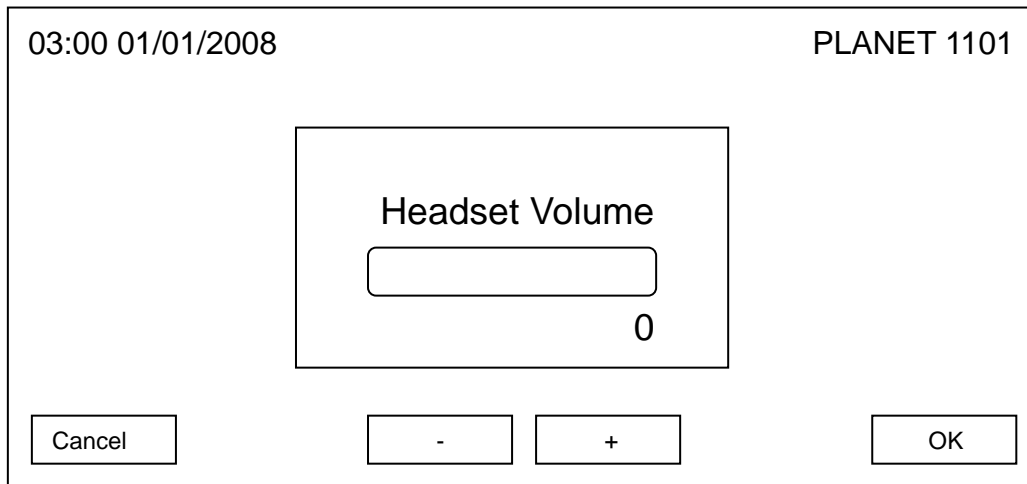
Press "Main Menu" key to enter main menu, then use up / down key and OK key to go "Setting" -> "Phone Settings" -> "Call Waiting", you'll be prompted to select "Enable" or "Disable" call waiting. Press up / down key to make choice and press "Select" to save change, or press "Cancel" to abort and back to previous menu.



## Adjust Handset / Headset / Speakerphone Volume

If you think the volume of handset, headset, or speakerphone is too high or too low, you can adjust its volume setting.

Please lift handset, or press headset / speaker key, and the press "Volume Up" or "Volume Down" key. You'll see the following message displayed on LCD display. Please press volume up / down key to adjust volume, and press "OK" key to accept new volume setting, or press "Cancel" to keep volume setting untouched.

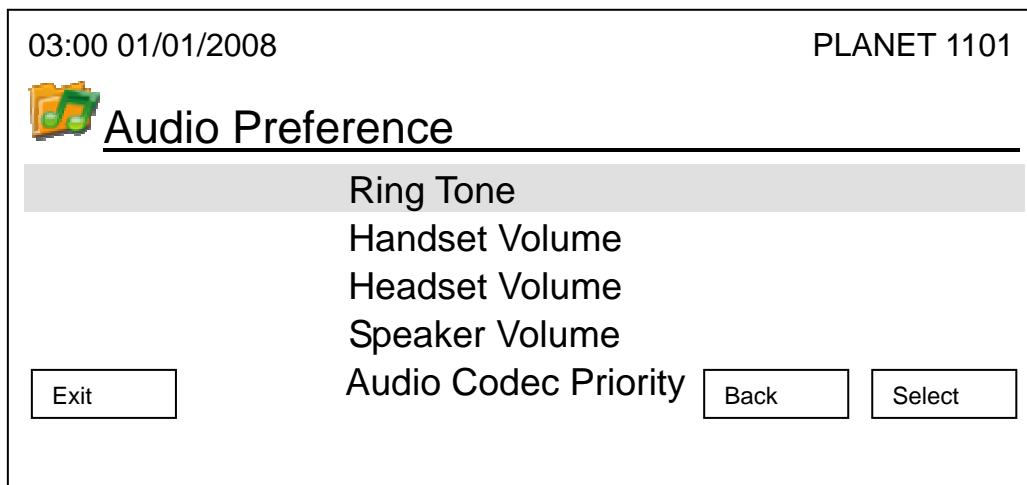


**Note**

You can also adjust volume of handset, headset, or speakerphone during a call

You can also change volume setting in audio preferences menu:

Press "Main Menu" key to enter main menu, then use up / down key and OK key to go "Setting" -> "Initial Setup" -> "Audio Preference".

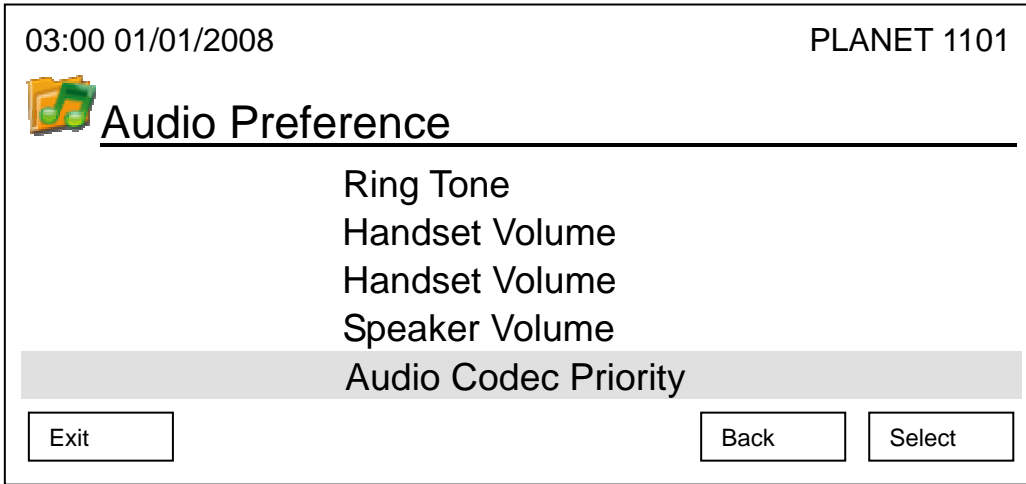


Please select a setup item you wish to set, and then press "OK" key. You can adjust the volume by left / right key, - / + key, or volume up / down key. Remember to press "OK" key to save change, or press "Cancel" key to keep volume setting untouched.

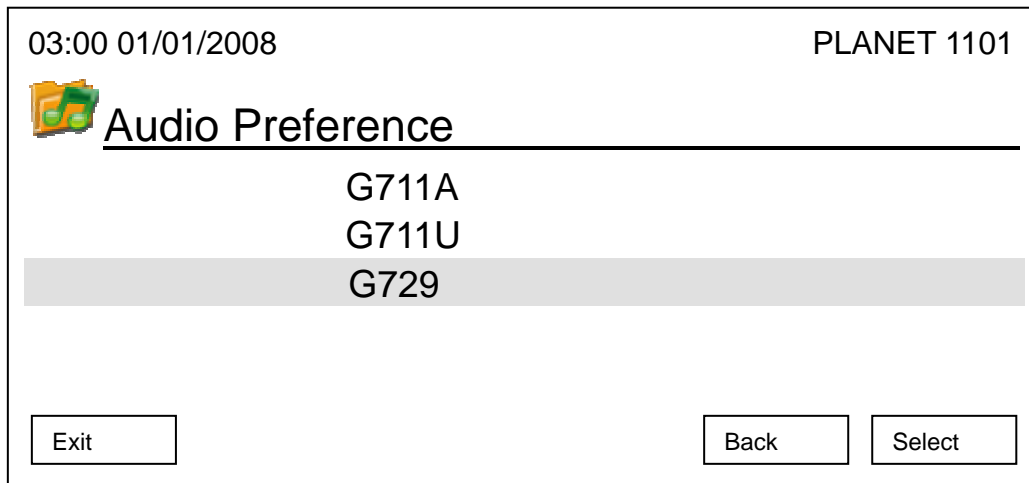
### Selecting Default Audio Codec

This phone supports G711A, G711U, and G729 audio codec. If you want to change the priority of audio codec, please follow the following instructions:

1. Press 'Main Menu' key to enter main menu, then use up/down key and ok key to enter 'Settings' -> 'Initial Setup' -> 'Audio Preference', then select 'Audio Codec Priority'.



2. Please select the audio code you wish to set as highest priority (will be used first), then press 'Select' key. If you wish to keep original setting untouched, please press 'Exit' or 'Back' key.



## Advanced Configurations


### Manages your Address Book and video phone settings

This phone has an internal address book; you can add all frequently called phone numbers into address book to save dialing time and help you to memorize lots of phone number.






#### Address Book edits

Press “Main Menu” key to enter main menu, then press “OK” key when “Address Book” is selected.

03:00 01/01/2008 PLANET 1101

 **Address Book**

---

|   |        |      |
|---|--------|------|
|    | Albert | 2101 |
|    | Linda  | 2102 |
|   | Jackie | 2103 |
|  | Bart   | 2104 |
|  | Mary   | 2105 |

You can press these keys in address book:

|                 |   |
|-----------------|---|
| Exit            | Leave address book and back to main menu              |
| Dial            | Dial selected address book item                       |
| Next / Previous | Move to next / previous page                          |
| Menu            | Add, edit, or delete an address book item (See below) |
| Go To           | Search for a user name                                |

When you press “Menu” key, you’ll be prompted to select add, edit, or delete:




## New

You can add a new person to your address book:

03:00 01/01/2008 PLANET 1101

---

### Add New Entry

Sex:     

Name:

Number:

You will see a hand icon displayed on LCD display, which indicates the field you're currently entering data, and you can press up / down key to move hand icon and select the field you want to enter data:

Sex: Press left / right key to choose sex of this person

Name: Press number keys 0 to 9 to input the name of this person

Number: Press number keys 0 to 9 to input the phone number of this person

You can press "Delete" key to remove a character or number, and press "Save" key when you finish.

You can also press "Cancel" key to return to previous menu.

### Note

---

Please refer to chapter 2-7 for instructions on how to enter alphabets and numbers

---

## Edit

You can edit the content of an existed address book item, please use up / down key to select an address book item first, and then press "Menu" -> "Edit". You'll be prompted to modify the information of selected address book item, press "Save" to save changes, or press "Exit" to keep selected item untouched.

## Delete

You can delete an unwanted address book item by this function. To do so, please use up / down key to select an address book item first, and then press "Menu" -> "Delete". You'll be prompted to confirm delete, press "Yes" to confirm, or "Cancel" to abort.

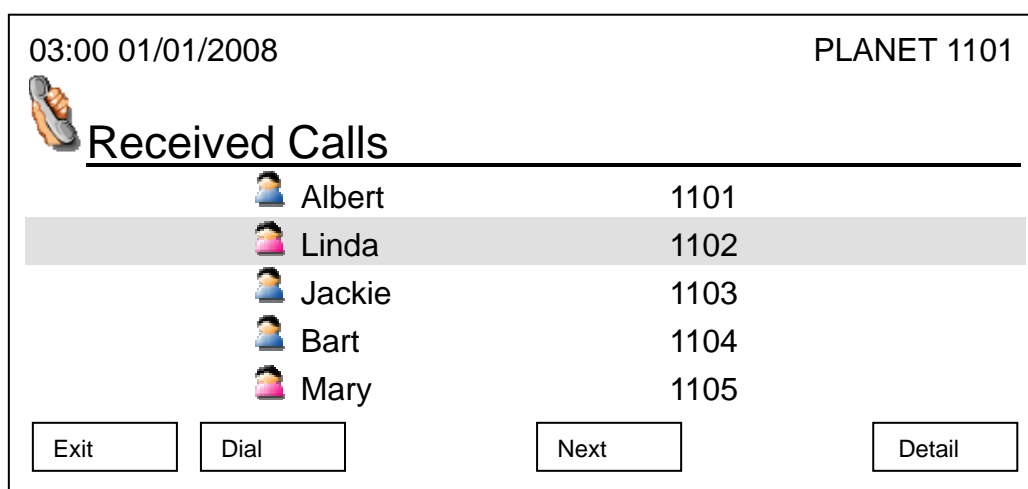
## View Call Records

This phone can keep the record of calls. To view these records, follow the following instructions:

Press “Main Menu” key to enter main menu, then use up / down key and OK key to go “Setting” -> “Call Records”. There are 3 types of call record:

- a. Received calls: The record of all incoming phone calls
- b. Dialed calls: The record of all outgoing phone calls
- c. Missed calls: The record of all missed calls

Please use up / down key to select the type of call record you wish to view, and press “OK” key.



And you can use these keys in call record:

|                 |   |
|-----------------|---|
| Exit            | Leave address book and back to main menu  |
| Dial            | Dial selected address book item   |
| Next / Previous | Move to next / previous page  |
| Detail          | View the detailed information about selected call record, including date and time called and duration |

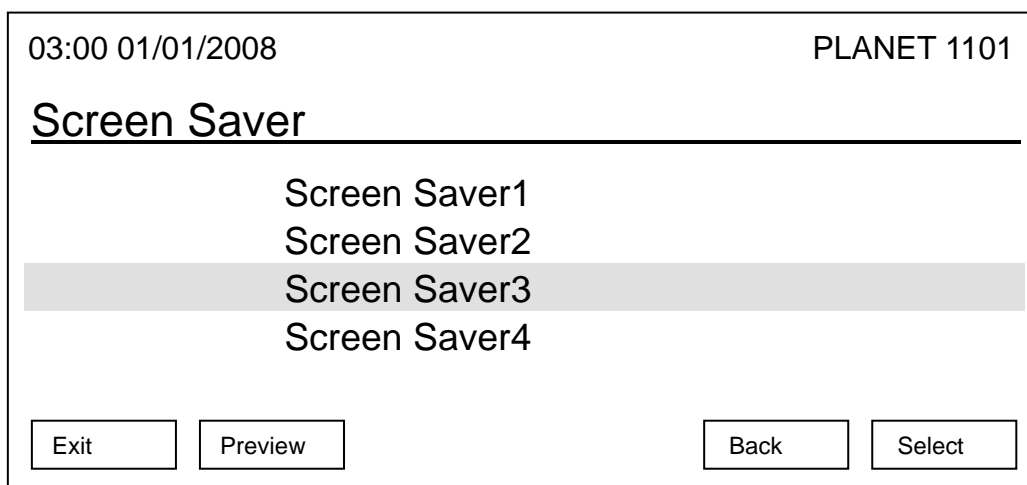
## Personalize – Change Screen Saver

When the phone is not in use after a certain period of time, screen saver will be activated automatically to prevent “screen burn-in” from happening. This is very important when you connect this phone to CRT monitor or Plasma TV without burn-in repair function.

If you want to change screen saver type, follow the following instructions:

Press “Main Menu” key to enter main menu, then use up / down key and OK key to go “Setting” ->

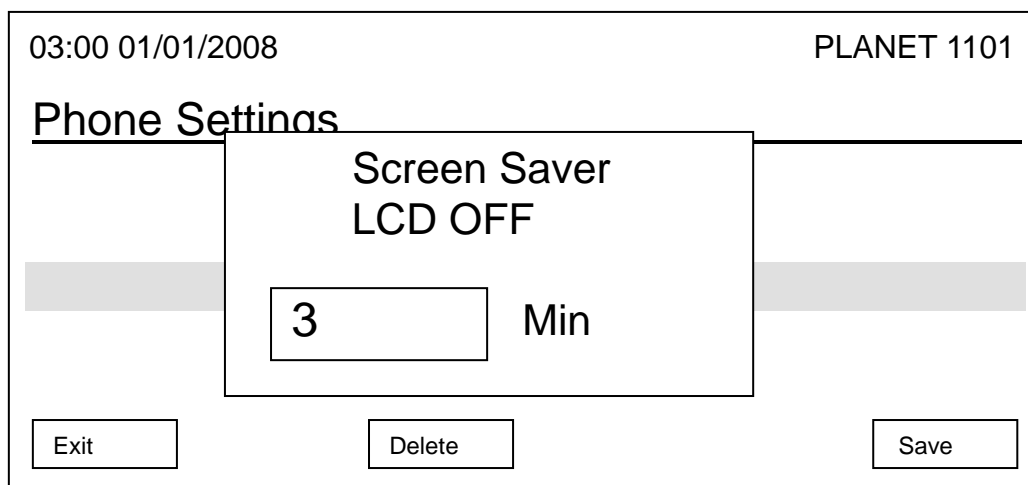
“Personalize” -> “Screen Saver”. Please use up / down key to select a screen saver, you can press “Preview” key to preview the screen saver you selected, during preview you can press “Cancel” to return to screen saver menu, then press “Select” to save change, or you can press “Exit” to abort.



You can also change the time to wait before screen saver is activated or just shutdown the LCD display to save energy:

Press “Main Menu” key to enter main menu, then use up / down key and OK key to go “Setting” -> “Phone Settings” -> “Timeout To Screen Saver”, then press “OK” key. You can use up / down key to select to use ‘Screen Saver’ or ‘LCD OFF’. If you select ‘LCD OFF’, LCD display will be switched off after the amount of time you specified here.

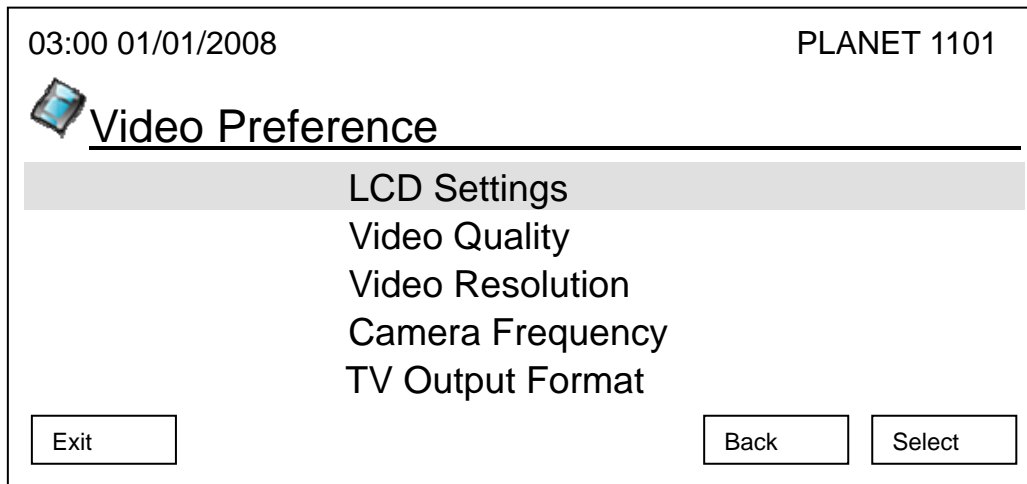
If you want to change the time that this phone waits before screen saver activates, please press “Delete” key to remove numbers, and input a new timeout setting by numeric keypad, then press “Save” key to save changes. If you don’t want to deactivate screen saver, you can input ‘0’. Please note that valid wait time is from 3 to 999 (minutes), you can’t input a number less than 3 here.



## Change Video Preference

To display the best quality of image on the LCD display of ICF-1600, please adjust the video preference to meet your environment requirement.

Press "Main Menu" key to enter main menu, then use up / down key and OK key to go "Setting" -> "Initial Setup" -> "Video Preference".



Please use up / down key to select a setup item to set, then press "OK" key:

### LCD Settings:

There are 2 sub items inside this setting item; they are "Brightness" and "Contrast". Please select the item you wish to set, and press left / right key or - / + key to adjust. You can see the change on LCD display when you press the key, when you're satisfied with new brightness or contrast setting, press "OK" key, or press "Cancel" key to keep original setting;

### Video Quality:

You can adjust the quality of sending image here, there are 3 options: Low Quality, Standard, and High Quality. Please use up/down key to select a quality setting, and press "Select" or "OK" key to save change you made. You can also press "Back" or "Exit" to keep original setting. Please note that the phone will reboot when a new video quality setting is made.

### Video Resolution:

You can also adjust the resolution of sending image here, there are 3 options: Low Quality, Standard, and High Quality. Please use up/down key to select a quality setting, and press "Select" or "OK" key to save change you made. You can also press "Back" or "Exit" to keep original setting. Please note that the phone will reboot when a new video resolution setting is made.



**Note**

Your remote party may not be able to display your image if you're using a different video quality or resolution.

### Camera Frequency:

If you're using fluorescent light in the room, you may need to adjust camera frequency, or the image could be flashing. There are 3 options: Auto, 50 Hz, and 60 Hz. In most cases you can select "Auto", or you can select a proper setting according to the frequency of your utility power.

|                         |                  |
|-------------------------|------------------|
| 03:00 01/01/2008        | PLANET 1101      |
| <u>Camera Frequency</u> |                  |
| Auto                    |                  |
| 50 Hz                   |                  |
| 60 Hz                   |                  |
| Exit                    | Back      Select |

### TV Output Format

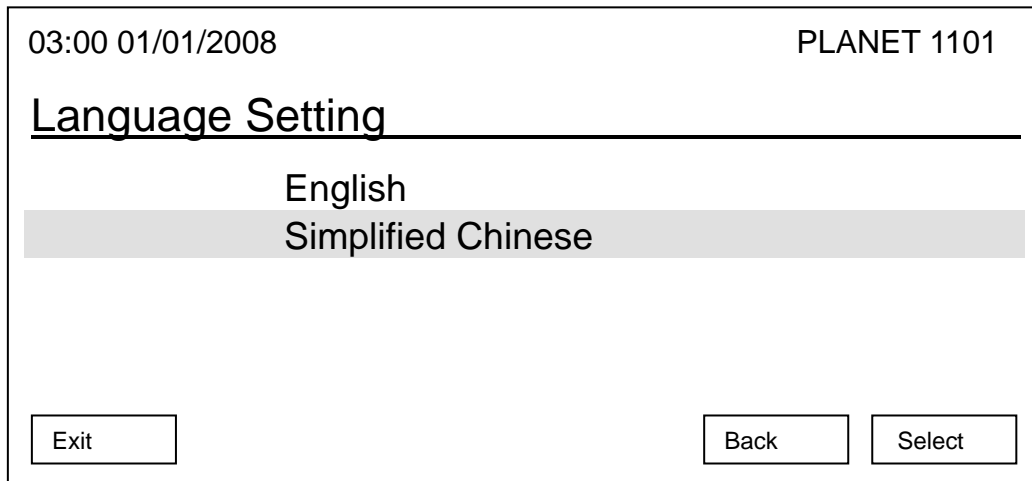
You can select the video output format of this phone (PAL or NTSC). IF you're using this phone in China, please select 'PAL'; if you're using this phone in Taiwan, United States, or Japan, please select 'NTSC'.

|                         |                  |
|-------------------------|------------------|
| 03:00 01/01/2008        | PLANET 1101      |
| <u>TV Output Format</u> |                  |
| PAL                     |                  |
| NTSC                    |                  |
| Exit                    | Back      Select |

## Change Display Language

There are several language interfaces available in this phone. If you want to change display language, follow the following instructions:

Press "Main Menu" key to enter main menu, then use up / down key and OK key to go "Setting" -> "Initial Setup" -> "Language Settings". Please use up / down key to select a language from language list, and press "Select" to save change, or press "Exit" to leave language setting untouched.

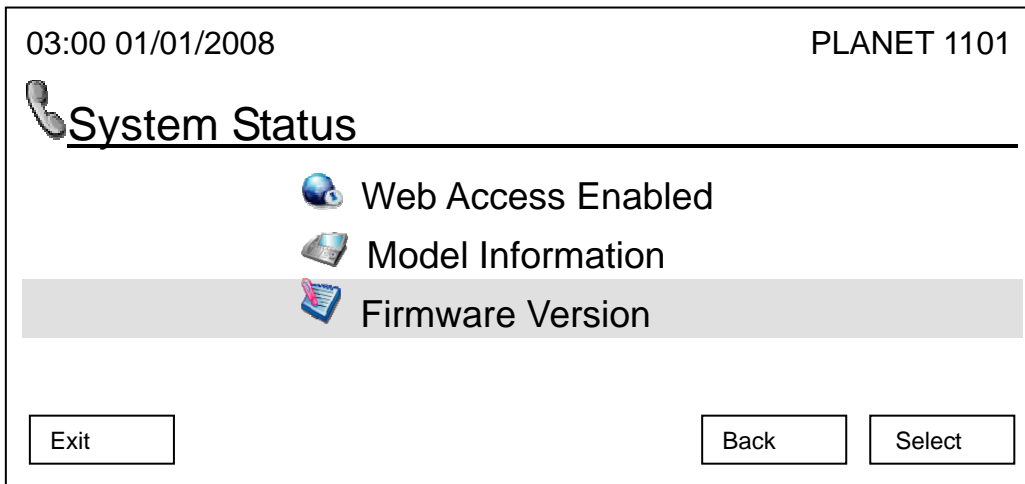


## View System Status

You can check various status of this phone by accessing "System Status" menu:

Press "Main Menu" key to enter main menu, then use up / down key and OK key to go "Setting" -> "System Status", then you'll see 3 status items:

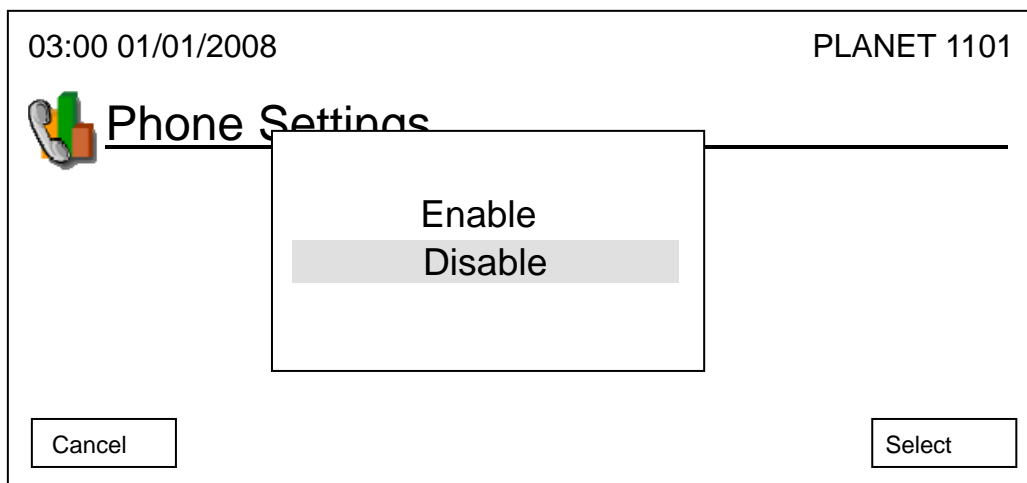
- a. Web Access Enabled: You can check the status of internal web service, and you can also enable / disable web access by pressing up / down key, and press "Select" to save change, or press "Cancel" to abort and back to previous menu
- b. Model Information: The model number of this phone will be displayed, press "Cancel" or "OK" key to back to previous menu.
- c. Model Version: The version number of internal firmware will be displayed, press "Cancel" or "OK" key to back to previous menu.



## Video Privacy

If you don't want to be seen by your remote party accidentally, you can do this by disabling built-in camera:

Press "Main Menu" key to enter main menu, then use up / down key and OK key to go "Setting" -> "Phone Settings" -> "Video Privacy", you'll be prompted to select "Enable" or "Disable" camera. Press up / down key to make choice and press "Select" to save change, or press "Cancel" to abort and back to previous menu. Please note that the phone will reboot if the setting is changed.



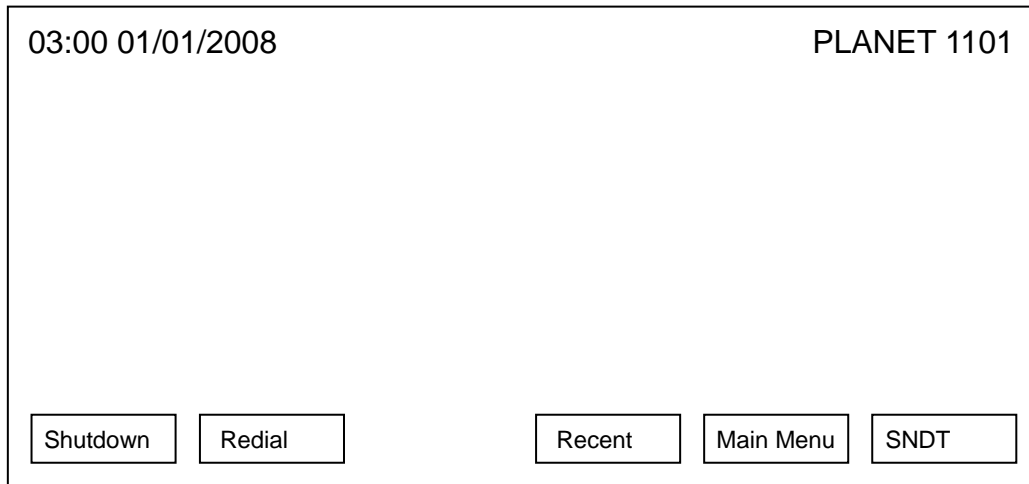
### Note

If you just want to disable camera for a while, you can move the camera lid to left position.

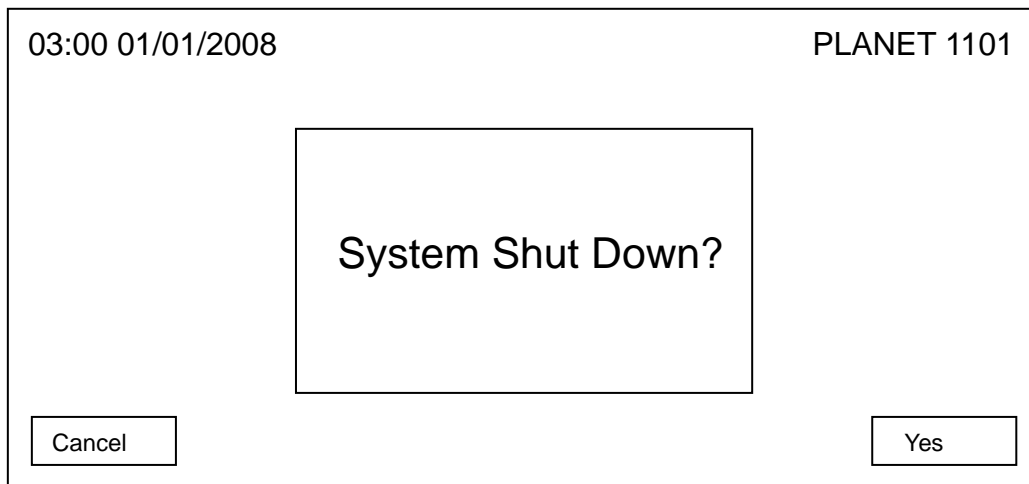
## Shutdown

This phone operates like an ordinary computer and it will need to save information during operation. A proper shutdown procedure is required to keep this phone working properly.

When you need to remove the power from the phone, please press 'Shutdown' key in main menu:



You'll be prompted to confirm shutdown:



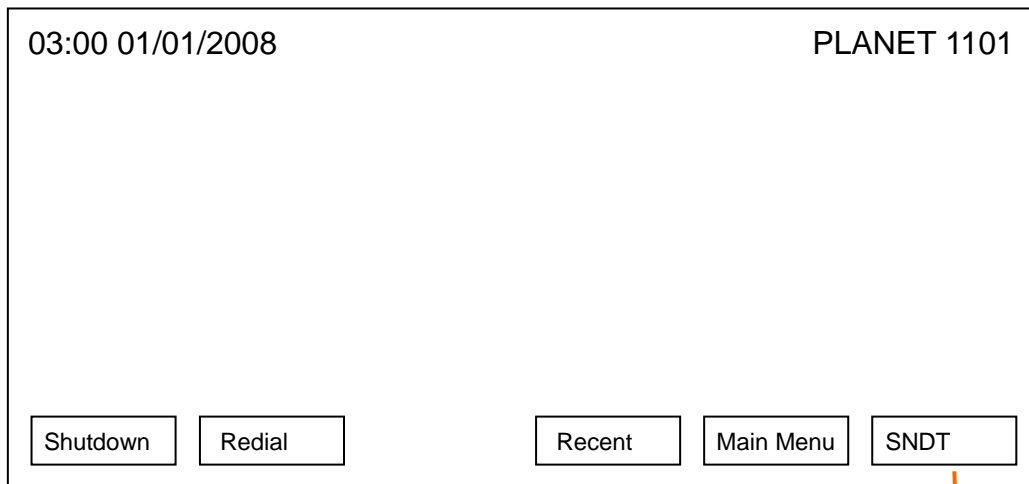
# Chapter 6

## Web Browser Operates



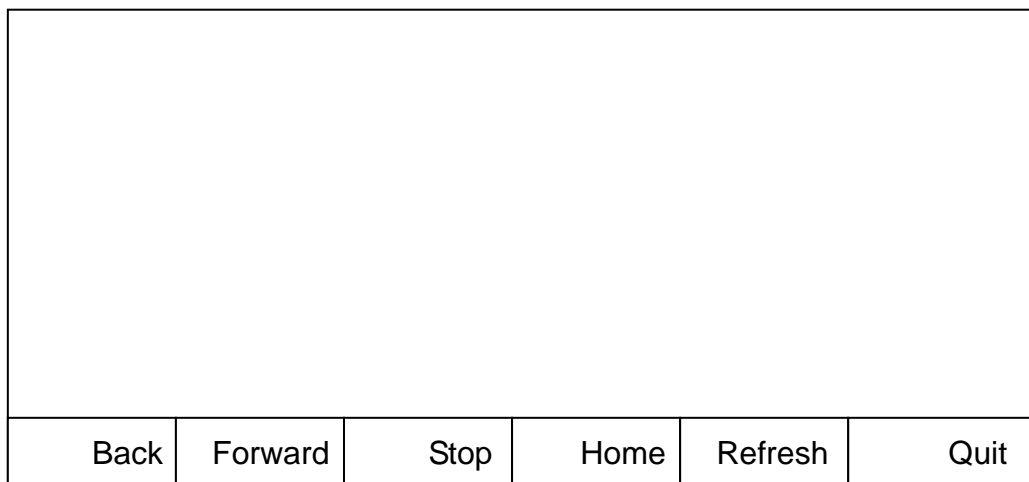
### Using Web Browser

This phone provides a simple web browser; you can use it to get many kinds of information from internet. Please click 'SNDT' key in this phone's main menu, and connect to our webpage:



The location of SNDT key

After web browser has been started, the following menu will be shown:



The descriptions of every key is listed as follow:

---

|         |  |
|---------|--|
| Back    | Back to previous page. If no previous page is available, nothing will happen when you press this key.  |
| Forward | If you used 'Back' key to back to previous page, you can use this key to proceed to next page. However, if you never used 'Back' key, nothing will happen when you press this key. |
| Stop    | Press this key to stop downloading webpage.  |
| Refresh | Download current webpage again. If you found that some contents are not displayed in current webpage, you can press 'Refresh' button to download webpage again.                    |
| Quit    | Quit web browser and back to standard phone menu.  |

---

## How to select items on webpage?

When you're using web browser on computer, you'll use mouse; when you're using the web browser of this phone, please use direction keys (up, down, left, and right) to select items.

All selectable items on current webpage will be indicated by a movable square, like:



The picture shown above indicates that ' ' is selected currently, and you can press 'right' key to select ' ' item. By using direction keys, you can select every item on webpage. If the item you wish to select is not displayed, you can use direction keys to move the webpage, so the contents not currently shown on display will appear.

When you want to select a certain item in current webpage, press 'OK' key, just as you use mouse to click an item on webpage.

## How to select item in dropdown menu?

When you wish to select an item in a dropdown menu, you can move the square to the dropdown menu you wish to select, then click 'OK' key. The color of dropdown menu will change, and you can use right / down key to select item in downward direction, or use up / left key to select item in upward direction. When the item in dropdown menu is selected, press 'OK' key.

## How to click a button?

Move the square to the button you wish to click, and then press 'OK' key.

## How to input text?

When you move the square to text entry box, please click 'OK' key to start to input text. A text entry bar will appear at the bottom of display:



The picture shown above indicates the phone has been entered text entry mode. The 'A' character located at the bottom-left corner of display indicates that the phone is in alphanumerical text entry mode now. You can press a number key on numeric keypad, and the corresponding alphabet and number will be shown (the following picture shows the choices you'll have after '2' has been pressed).



You can use left / right key to select the character you wish to input, and then press 'OK' to input the character you selected. If you selected wrong character, you can press 'DELETE' key to remove it (to return to previous step).

If you wish to input numbers by numeric keypad directly, press '簡中->1' key, and the phone will enter number input mode:



You can press number keys to input numbers directly.

You may noticed that an underline will appear under the text you inputted; when you finished with text input, you can press 'OK' key again (don't press any number keys) to quit text input mode, and the underline under the text will appear.



# Appendix A

## Firmware Upgrade

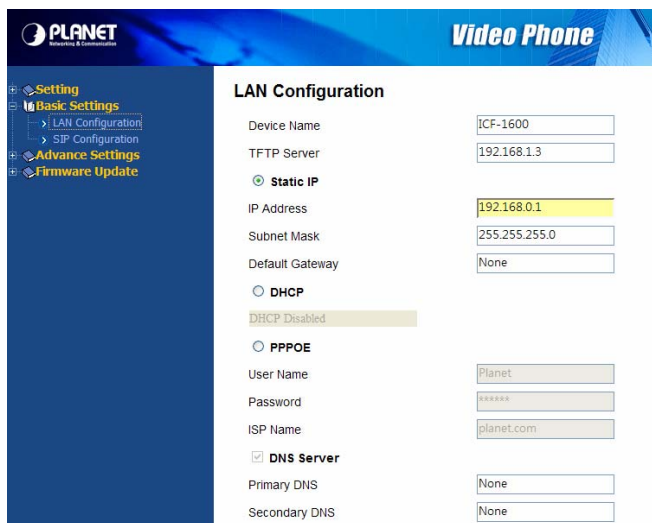
If you want to upgrade the firmware of this phone, please follow these instructions:

### Note

A failed upgrade attempt may cause phone malfunction, if this happens, please contact your dealer of purchase to ask for help.



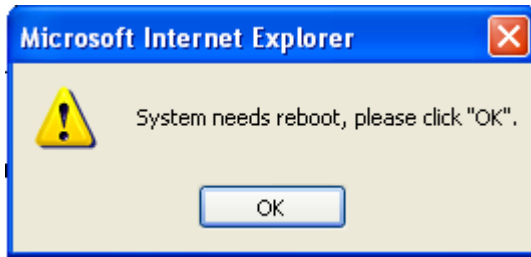
Connect to ICF-1600 by the web browser on your computer, enter username and password, and press “Login” to login.



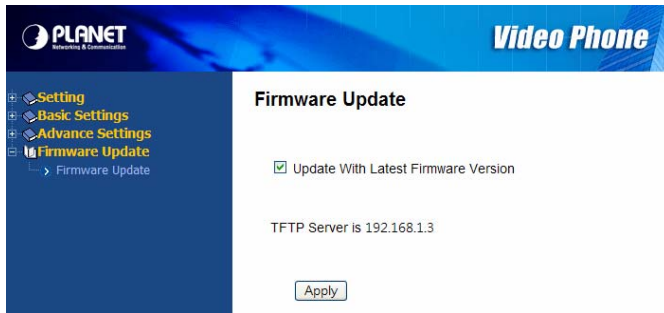
Click “Basic Settings” link on the left, then click “LAN Configuration”.



Please fill the TFTP address (provided by service provider) in “TFTP Server” field, then click “Apply”.



Press “OK” when you see this popup window, and your phone will reboot.



Please connect to ICF-1600 by the web browser again, click “Firmware Update” link on the left, then check “Update With Latest Firmware Version” box, and press “Apply”.

**Note**

---

Do not remove network cable or power adapter during upgrade or firmware upgrade may fail, and cause malfunction.

---

After the firmware is upgraded, the phone will reboot. You can refer to the instructions given in chapter 3-7 to check the new firmware version.

# Appendix B

## FAQ

### Q1: Nothing is displayed on LCD display, or malformed text / graphic is displayed.

A:

- Check the connection between power jack of A/C adapter and the phone. Make sure it's securely connected.
- Plug the A/C adapter into power outlet on the wall, if it's not plugged in.
- Please check the status of power outlet, maybe it's not powered.
- Disconnect the power jack and A/C adapter, and reconnect it again after about 10 seconds.
- Press "SPEAKER" or "HEADSET" button on the phone, or lift handset. If you can hear dial tone, please return this IP phone to your dealer.
- Press key once, make sure the phone is not in TV-OUT mode.
- If you just tried to upgrade firmware and you see malformed text displayed on LCD display, contact your dealer for assistance.
- If the problem can not be solved by solutions listed above, please contact your dealer of purchase for assistance.



### Q2 : I can not hear dial tone.

A:

- Please check the cable connection between IP phone and handset.
- Replace the cable used to connect IP phone and handset with a new one. (If you don't have another cable, bring the old cable to a telephone / computer store and show them, they can help).
- If you can't hear dial tone from handset, try to press 'SPEAKER' button on the phone, to see if you can hear the dial tone. Please also check the connection cable between handset and the phone
- Try a higher volume setting.
- Try solutions of last scenario.
- Contact your dealer if above solutions don't work.

### Q3 : I can hear dial tone in the handset, but I can not place / accept phone call.

A:

- If you see  icon displayed on the left corner of LCD display, please re-check the network connection. If the network is working, please contact your service provider and check service availability.
- If you see  icon displayed on the left corner of LCD display, the phone is not registered to VoIP server. Please re-check SIP setting of this phone, and make sure VoIP server is reachable by the network you connected to.
- Please contact your VoIP service provider and / or ISP to ask for service availability.

- Please contact your dealer of purchase if this problem can not be solved by solutions listed above.

**Q4 : I can not see my image / remote party can not see my image / malformed image is displayed.**

**A:**

- Make sure the camera lid is in right position, not left.
- Make sure you set the “video privacy” setting to “OFF”
- If you think the image is flashing, please try a different camera frequency (refer to section 3-5 for details)
- If you see strange color / malformed image displayed, please contact the dealer of purchase for help.

# Appendix C

## ICF-1600 Specifications

|                        |  |
|------------------------|--|
| Product                | Internet Video Conferencing Phone  |
| Model                  | ICF-1600   |
| Hardware               |  |
| Port                   | 2 x 10/100Mbps RJ-45 port  |
| Camera                 | CMOS module, 300K pixels QCIF, 30fps, Camera door  |
| Audio/Video Input      | 1 telephone handset<br>1 built-in microphone<br>1 USB 1.1  |
| Audio/Video Output     | 1 built-in 7" TFT LCD, adjustable angle<br>1 pair RCA Audio/Video output<br>1 built-in speaker   |
| Protocols and Standard |  |
| Standard               | SIP 2.0 RFC 3261   |
| Video Standard         | H.263, MPEG4   |
| Audio Standard         | G.711a/u, G.723.1, G.729A/B  |
| Internet protocol      | TCP/IP, UDP, RTP/RTCP  |
| Echo cancellation      | G.167  |
| LAN standard           | IEEE 802.3 Ethernet<br>IEEE 802.3u Fast Ethernet   |
| Phone Features         |  |
| Keys                   | 1 Speaker phone Key<br>1 Headset Key<br>1 Volume Up & Down keys<br>1 Picture in picture enable key<br>1 Camera mute key<br>1 LCD/TV display toggle key<br>1 LCD Brightness Up & Down Keys<br>5 Speed dial Buttons<br>6 Soft keys |
| Audio Features         | Silence Suppression<br>Comfort noise generation(CNG)<br>voice activity detection (VAD)<br>In-band DTMF & Out-of-band DTMF (RFC 2833)<br>Call progress tone generation<br>Acoustic Echo Cancellation                              |

|                                 |   |
|---------------------------------|---|
|                                 | Dynamic Jitter buffer<br>Three-way audio conferencing   |
| Video Features                  | Two-way Video Call<br>PIP(Picture in Picture)<br>LCD Brightness Adjustment<br>LCD Contrast Adjustment<br>LCD/TV Display Switch<br>Video Privacy (Audio Only)<br>Video Mute<br>Remote Video Display On/Off |
| Message & Configuration Service | Address Book<br>Phone setting<br>Network setting<br>Call records<br>Local Clock setting   |
| Network and Configuration       |   |
| Internet Connection Type        | Fixed IP, DHCP, PPPoE   |
| Management                      | LCD / Keypad UI<br>Web (HTTP)   |
| Dimension (W x D x H)           | 262 mm x 230 mm x 95 mm   |
| Operating Environment           | 0~40 degree C, 5~95% humidity   |
| Power Requirement               | 12 V DC   |
| EMC/EMI                         | CE, FCC   |

## EC Declaration of Conformity

For the following equipment:

\*Type of Product : Internet Video Conferencing Phone  
\*Model Number : ICF-1600

\* Produced by:

Manufacturer's Name : **Planet Technology Corp.**  
Manufacturer's Address: 11F, No 96, Min Chuan Road  
Hsin Tien, Taipei, Taiwan , R. O.C.

is herewith confirmed to comply with the requirements set out in the Council Directive on the Approximation of the Laws of the Member States relating to Electromagnetic Compatibility Directive on (89/336/EEC,92/31/EEC,93/68/EEC).

For the evaluation regarding the EMC, the following standards were applied:

Emission: EN 55022:1998+A1:2000 + A2:2003, Class B  
(CISPR 22:1997+A1:2000+A2:2002 +  
AS/NZS CISPR 22:2004)  
EN 61000-3-2:2000, EN 61000-3-3:1995 + A1:2001

Immunity: EN 55024:1998 + A1:2001 + A2:2003  
IEC 61000-4-2:2001  
IEC 61000-4-3:2002  
IEC 61000-4-4 Ed2:2004  
IEC 61000-4-5 Ed2.0:2005  
IEC 61000-4-6 Ed2.1:2004  
IEC 61000-4-8:2001  
IEC 61000-4-11 Ed2:2004

Responsible for marking this declaration if the:

Manufacturer  Authorized representative established within the EU

Authorized representative established within the EU (if applicable):

Company Name: **Planet Technology Corp.**

Company Address: **11F, No.96, Min Chuan Road, Hsin Tien, Taipei, Taiwan, R.O.C**


Person responsible for making this declaration

Name, Surname **Jonas Yang**

Position / Title : **Product Manager**

Taiwan  
Place

29 May., 2008  
Date

  
Legal Signature

**PLANET TECHNOLOGY CORPORATION**

e-mail: sales@planet.com.tw http://www.planet.com.tw

11F, No. 96, Min Chuan Road, Hsin Tien, Taipei, Taiwan, R.O.C. Tel:886-2-2219-9518 Fax:886-2-2219-9528