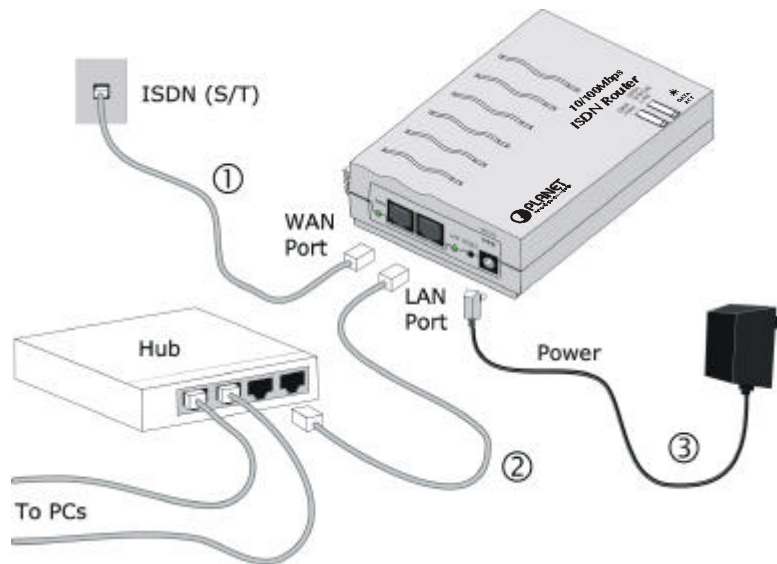


IRT-101

ISDN Router

Quick Installation Guide

1. Hardware



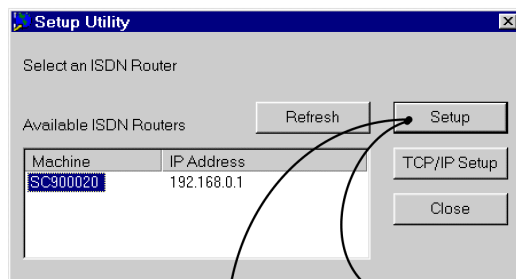
Note

The ISDN Internet Router incorporates a DHCP Server. If your LAN already has a DHCP Server, either turn it Off or see the User Guide for further details.

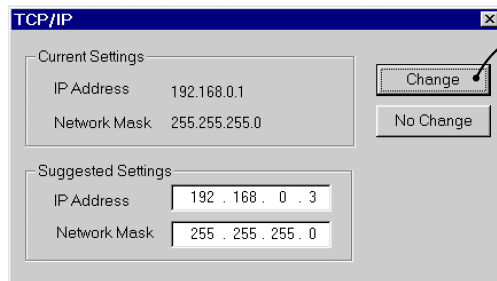
2. Software

1. Run SETUP.EXE in the root directory of the CD-ROM.
2. Follow the prompts to complete the installation.
3. The setup program will now run.

3. Setup



Only if IP Address
can't work.



To Quick Setup
screen

SC900020

Access Control | Internet Application | LAN-to-LAN | ISDN

Quick Setup | Status | Password | LAN | Dial-In

Internet Access

Enable Internet Access

Account Name:

Account Password: Verify:

IP Address from ISP: Dynamic Fixed

DNS IP Address:

Telephone: (Required)

Telephone 2: (Optional)

Telephone 3: (Optional)

ISDN

Country:

For USA, The following data is required:

SPID (1st B Channel):

SPID (2nd B Channel):

TCP/IP

Device IP Address: 192.168.0.1

Network Mask: 255.255.255.0

From ISP

From ISP

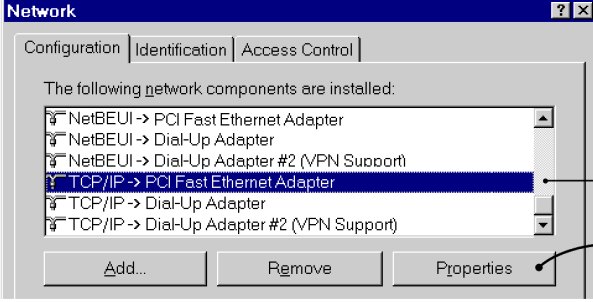
USA has 4 entries, by switch type

From Telephone company

4. PC Setup (Required for every PC)

Use *Control Panel - Network* to locate this screen.

①



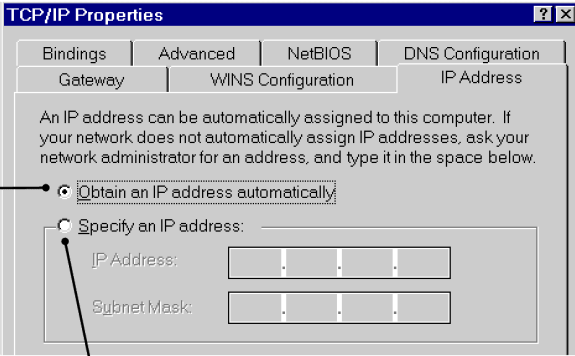
The following network components are installed:

- NetBEUI -> PCI Fast Ethernet Adapter
- NetBEUI -> Dial-Up Adapter
- NetBEUI -> Dial-Up Adapter #2 (VPN Support)
- TCP/IP -> PCI Fast Ethernet Adapter
- TCP/IP -> Dial-Up Adapter
- TCP/IP -> Dial-Up Adapter #2 (VPN Support)

Buttons: Add... Remove Properties

Network Adapter

②



Bindings | Advanced | NetBIOS | DNS Configuration

Gateway | WINS Configuration | IP Address

An IP address can be automatically assigned to this computer. If your network does not automatically assign IP addresses, ask your network administrator for an address, and type it in the space below.

DHCP (Normal) Obtain an IP address automatically

Specify an IP address:

IP Address: [.] [.] [.] [.]

Subnet Mask: [.] [.] [.] [.]

If using this, do not make any changes on this tab.

- On the **DNS** tab, enter the value used in step 3.
- Set the **Gateway** to the ISDN Router's IP Address.

③ Restart your PC

④ Internet Settings

1. Run *Start-Settings-Control Panel-Internet Options*
2. On the *Connection* tab, click the *Setup* button.
3. Step through the Wizard, and ensure that:
 - ◆ Internet access is "via local area network (LAN)"
 - ◆ The other options are NOT selected.
4. You can now use your Browser to access the Internet.

