

UE2000
Universal Serial Bus
Network Adapter
USER'S MANUAL

Copyright

Copyright © 1999 Planet Technology Corp., Inc., all rights reserved. No part of this publication may be reproduced, adapted, stored in a retrieval system, translated into any language, or transmitted in any form or by any means without the written permission of Planet Technology Corp..

Trademarks

UE-2000 and Planet are trademarks of Planet Technology Corp., all other trademarks throughout this manual are the property of their respective companies.

Limited Warranty

In no event will Planet be liable for any damage, including loss of data or profits, cost of cover, or other incidental, consequential or indirect damages arising from the installation, maintenance, use, performance, failure or interruption of Planet's products, whatever caused and on any theory of liability. This limitation will apply even if Planet has been advised of the possibility of such damage.

About This Manual

The purpose of this manual is for the setup of the product USB Network Adapter. This manual, includes procedures which help you to avoid unforeseen problems.

Revision

User's Guide for USB Network Adapter

Model: UE-2000.

Part No.: **EMUE2K**

REGULATORY STATEMENTS

FCC Certification

Part 15, Class B

FCC ID:MQ4USB10TA

The United States Federal Communication Commission (FCC) and the Canadian Department of Communications have established certain rules governing the use of electronic equipment.

FCC Part 15 Registration

This device complies with Part 15 of FCC rules. Operation is subject to the following two conditions:

1) This device may not cause harmful interference, and
2) This device must accept any interference received, including interference that may cause undesired operation. This equipment has been tested and found to comply with the limits for a Class B digital device, pursuant to Part 15 of the FCC Rules. These limits are designed to provide reasonable protection against harmful interference in a residential installation. This equipment generates, uses and can radiate radio frequency energy, and if not installed and used in accordance with the instructions, may cause harmful interference to radio communications. However, there is no guarantee that interference will not occur in a particular installation. If this equipment does cause harmful interference to radio or television reception, which can be determined by turning off and on, the user is encouraged to try to correct the interference by one or more of the following measures:

- ▶ Reorient or relocate the receiving antenna.
- ▶ Increase the distance between the equipment and receiver.
- ▶ Connect the equipment into an outlet on a circuit different from that to which the receiver is connected.

Contents

INTRODUCTION	1
PACKAGE CONTENTS	1
HARDWARE INSTALLATION.....	2
HARDWARE INSTALLATION PROCEDURE.....	3
WINDOWS 98 SETUP	4
LED INDICATOR	8
SPECIFICATIONS.....	9


Introduction

Now you can experience a true plug-and-play Network device easier than ever. The USB (Universal Serial Bus) Network Adapter allows you to connect any 10Mbps or 10Mbps network from a USB-enabled PC, notebook, or USB HUB. With instant hardware recognition from Windows 98 and “Hot Swap” feature from USB specification, you don’t need to be a MIS specialist to operate it. Just simply hook up the USB cable at one end and plug a standard twist pair (RJ45) network cable in the other end, and you will be networked within no time!

Package Contents:

- USB Network Adapter
- One USB cable
- One Driver Disk
- User’s guide

Hardware Installation

 **Note:** Before you install USB LAN adapter, please check your PC which is installed and enabled the USB port. You need to have both USB port and USB enabled to continue the next step. Otherwise, please STOP this installation.

In order to properly install the USB LAN adapter, it is very important to recognize the hardware first.

1. USB Cable

USB cable has two ends – One has rectangular plug, or called A-Type connector; another one has a square plug, or called B-type connector.

2. USB LAN Adapter

USB LAN adapter has two ports. One port is USB B-type port and the other is RJ45 Networking port –it looks like an over-sized phone jack.


Hardware Installation Procedure –

Step 1. Make sure the PC is powered on and runs **Windows 98**.

Step 2. Connect cable B-type plug into adapter's B-type port.

Step 3. Insert SUB A-type cable into the PC's USB port.

Step 4. Connect the adapter to a 10Mbps or 10Mbps/100Mbps auto-sensing HUB.

 **Note:** 10/100Mbps dual speed network uses Category 5 cabling. Cables of less quality and category will not work. Also make sure you are free of defects and they do not exceed 100 meters in length.

After successfully install the hardware. Now are ready for software. Before you go any further, please note that your USB LAN adapter USB can **ONLY** work with Windows 98 and some versions of Windows 95 version (OSR2) support USB. If you have **NOT** yet installing Windows 98, please **STOP** now. Get the Windows 98 loaded, then continue the next step.

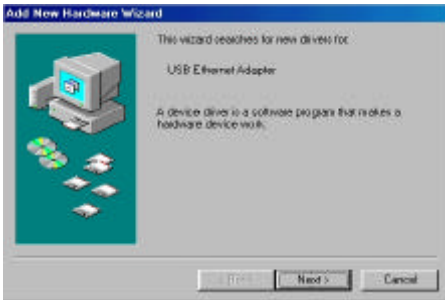
Windows 98 Setup

Note: Before you begin the driver installation, please make sure disable any network card currently installed into your system. And, have your Windows 98 CD-ROM copy handy.

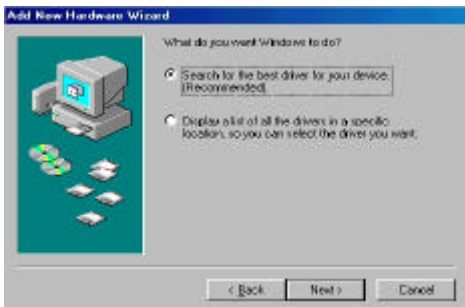
Step 1: Install the USB LAN Adapter into your PC or Notebook

Step 2: Start up your computer and Windows 98

Step 3: Windows 98 will show a "New Hardware Found" window. Click "Next"



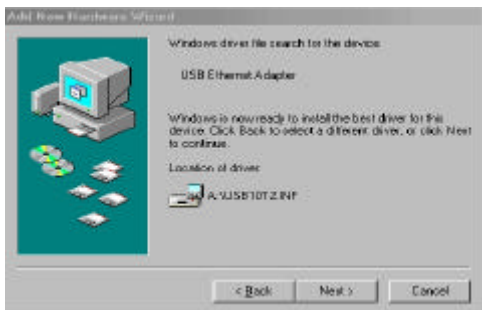
Step 4: Put the USB Network Adapter program diskette into Driver A and select "Search for the best driver for your device (Recommended)." Click "Next."



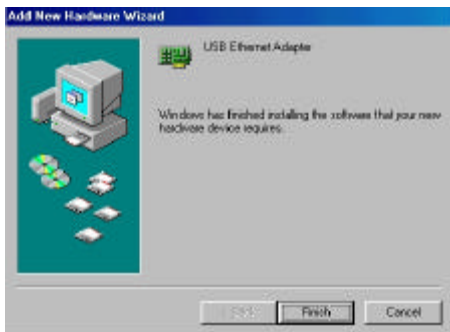
Step 5: Windows 98 will ask you to indicate the best driver. Make sure the floppy disk driver is selected and drive a:\ is specified. Click “**N**ext” to continue.



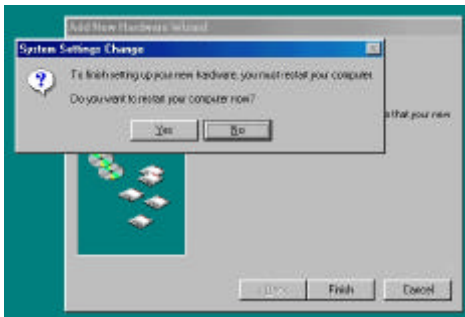
Step 6: Windows 98 will search the specified driver and start the download the driver. Click “**N**ext” to continue.



Step 7: When Windows 98 finish the driver installation, click **“Finish”** button.

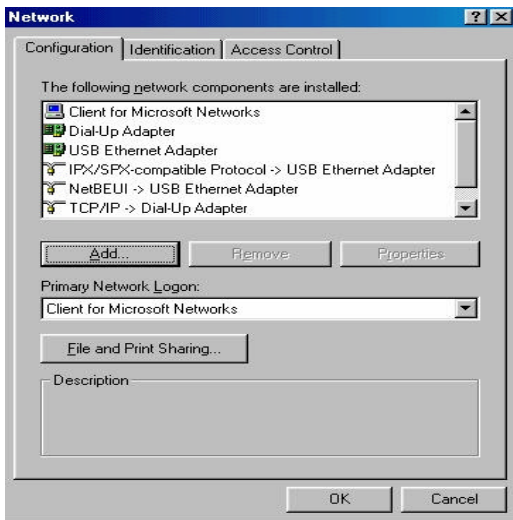


Step 8: Then Windows will ask you to restart your computer. Click **“No”** to continue.



Step 9: Once you are back at the desktop, click on the “**Start**” button. Then click on “**Settings,**” then “**Control Panel.**”

Step 10: Double-click the Network icon. Then select “**Configuration**” tab. Make sure the network components are installed.



Step 11: Now you can select the network protocol. After that the system restart your computer to let the setting be permanent.

LED Indicator

- **Link:** Indicates a good linkage between the ALN adapter and supporting HUB or Switch.
- **Activity (Tx/Rx):** Flash when data is transmitting between network.

Specifications

Network Specification

- IEEE 802.3 10BaseT Ethernet
- Cat 3/Cat 5 UTP, 100ohm STP cable up to 328ft/100M

Host Interface

- Bus-powered from USB host or HUB, no external power needed
- High speed upstream B type USB port
- Suspend power saving mode supported

Data Speed

- 10Mbps for Ethernet data transfer

Environment Operating Ranges

- Temperature: 32 to 149F (0 to 65 C)
- Humidity: 10% to 90% noncondensing

Power Consumption

- Operating: +5V DC. 75mA Max

LED Indicator

- Link status – Green
- Activity (TX/RX) – Amber

Driver Support

- Windows 98
- Windows 2000 (when available)

EMI Conformance

- FCC Part 15 Class B
- CE Mark Class B
- Japan VCCI Class B

