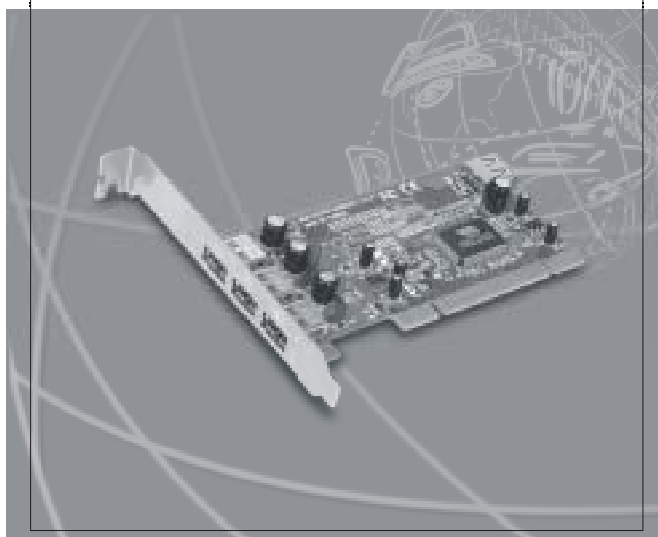




Internal PCI USB 2.0 Adapter

UIH-420

User's Manual



Introduction

UIH-420 is a Universal Serial Bus (USB) hub, which is an USB cable concentrator and a bridge between PC's PCI interface and USB devices. With UIH-420, there is no need to concern about IRQ conflicts or system resource allocations any more.

UIH-420 supports USB 2.0 high speed of 480Mbps and USB 1.1 full speed (12Mbps) and low speed (1.5Mbps). Through the four type-A downstream ports, up to 127 USB devices can be connected with just plug and play. UIH-420 is the ideal way to make use of USB 2.0 technology.

■ Package contents

- One 4 ports adapter (USB 2.0)
- One driver diskette
- One User's Manual

■ System Requirement

- Faster PC's processor with a free PCI slot.
- Windows 98, SE, 2000, Me, XP.

■ Features

- USB (Universal Serial Bus) 2.0 specification compatibility.
- Compatible to all USB 1.1 peripheral devices.
- Supports Intel UHCI (Universal Host Con-

troller Interface) and EHCI (Enhanced Host Controller Interface) specifications.

- Real USB-port Plug & Play, and Hot-swap functions.
- Provides four downstream host ports and all can work with high-speed, full speed and low speed data transfer rate.
- Compliant with 32Bit PCI Bus Rev2.2 standard.

■ Specification

Downstream port:	4 USB 2.0 series-A ports
Data rate:	High speed: 480Mbps Full speed: 12Mbps Low speed: 1.5Mbps
Cable length	Max. 2.08m with 24/28 AWG USB cable Max. 5m with 20/28 AWG USB cable
Output Voltage	DC+5V
Per-port:	
Output Current	500mA
Per-port:	
Dimensions(H*L)	62*120 mm

■ Hardware Installation

Before installation

- Touch the exposed metal casing on your computer's power supply before you taking the card from its anti-static package. This safely discharges any static electricity that

may have built up on your body.

- Handle the card by the PCB edge only. Avoid touching the gold-plated PCI bus connector or the electronic components.
1. Turn your computer off and disconnect the power cord before installing the card.
 2. Remove the cover of your computer. (Please refer to your computer owners manual for instructions on removing the cover)
 3. Check the height of rear panel for the card with right bracket for your PC.
 4. Push the host card firmly into a free PCI slot and ensure the gold-plated connector is seated evenly in the PCI slot.
 5. Replace the screw in the bracket to avoid the card falling out accidentally when plug in the USB cable.
 6. Put computer's cover on and apply power cord back again.



■ Install USB 2.0 driver of UIH-420

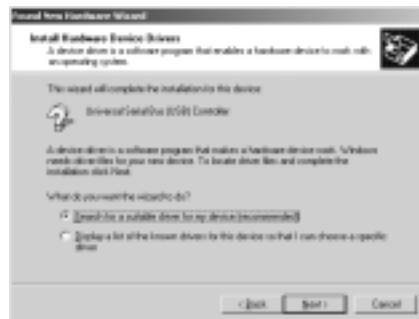
UIH-420 has three USB host controller engines in the chip. Two of the Universal Host Controller engines handle USB 1.1 transactions. One of the Enhanced Host Controller engine handles the USB 2.0 Hi-speed transactions. To ensure UIH-420 works well with high speed bandwidth, it is a must to install both drivers of UHCI and EHCI completely.

■ Install driver in Windows 2000/ XP

1. Once UIH-420 physically installed and the computer powers up, system will automatically detect and load the drivers for **"VIA USB Universal Host Controller"**.
2. Next, Windows finds a new hardware of **"Enhanced Host Controller"** and shows the Find New Hardware Wizard, Click **"Next"**



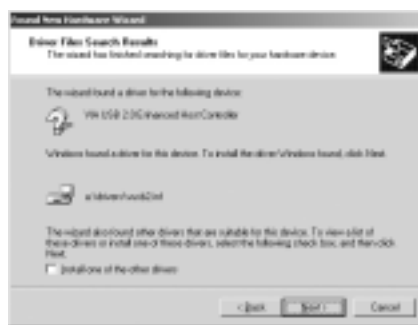
3. Windows prompts "**Universal Serial Bus Controller**". Select "**Search for the suitable driver for my device**", and click "**Next**".



4. You should now see a window to specify the location of the driver. Check "**Floppy disk drives**" and insert the EHCI driver diskette, then click "**Next**".



5. Dialog showing that Windows found a driver for this device. Click **"Next"** to continue.



6. When **"Completing the found new hardware wizard"** with **"VIA USB 2.0 Enhanced Host Controller"** dialog appears on the screen, click **"Finish"**.



7. Restart Windows and apply your USB devices.

■ Verify if PCI card is properly installed in Windows 2000/ XP

To confirm that the USB 2.0 Hi-speed PCI card has been correctly installed, check your Device Manager on the Windows System. You should see an entry titled "**Universal Serial Bus Controller**" click on the "+" sign for next sub-entry should reveal the following added readings:

VIA USB 2.0 Enhanced Host Controller

VIA USB Universal Host Controller

VIA USB Universal Host Controller

USB Root Hub

USB Root Hub

USB 2.0 Root Hub Device



■ Install driver in Windows 98/98SE/ ME

1. Once UIH-420 physically installed and the computer powers up, system will automatically detect and load the drivers for "VIA Tech 3038 PCI to USB Universal Host Controller". Then the system will prompt you to reboot.
2. After system reboot, check Device Manager on the Windows System. It will be shown as below.



Locate the device with a yellow sign on it. Double click mouse left button on the device.

3. The properties page of device will be shown as below. Click on Update Driver button.



4. The Update Driver Wizard will be shown as below. Select Automatic search for a better driver. Insert driver diskette into floppy. Then click Next.



5. Windows system will search floppy and install driver automatically. Then the screen on next page will appear. Ensure that the new device installed is VIA USB 2.0 Enhanced Host Controller. Click on Finish button and reboot to complete installation.



EM-UIH420

