

UL-101
USB Data Link
Installation Guide

FCC Information

The Federal Communication Commission Radio Frequency Interference Statement includes the following paragraph:

This equipment has been tested and found to comply with the limits for a Class B Digital Device, pursuant to Part 15 of the FCC Rules. These limits are designed to provide reasonable protection against harmful interference in a residential installation. This equipment generates, uses and can radiate radio frequency energy and, if not installed and used in accordance with the instructions, may cause harmful interference to radio communication. However, there is no guarantee that interference will not occur in a particular installation. If this equipment does cause harmful interference to radio or television reception, which can be determined by turning the equipment off and on, the user is encouraged to try to correct the interference by one or more of the following measures:

- ◆ Reorient or relocate the receiving antenna.
- ◆ Increase the separation between the equipment and receiver.
- ◆ Connect the equipment into an outlet on a circuit different from that to which the receiver is connected.
- ◆ Consult the dealer or an experienced radio / TV technician for help.

The user should not modify or change this equipment without written approval from company name. Modification could void authority to use this equipment. For the safety reason, people should not work in a situation which RF Exposure limits be exceeded. To prevent the situation happening, people who work with the antenna should be aware of the following rules:

1. Install the antenna in a location where a distance of 6.5 cm from the antenna may be maintained.
2. While installing the antenna in the location, please do not turn on the power of wireless card.
3. While the device is working, please do not contact the antenna.

Copyright

Copyright © 1999 Planet Technology Corp., all rights reserved. No part of this publication may be reproduced, adapted, stored in a retrieval system, translated into any language, or transmitted in any form or by any means without the written permission of Planet Technology Corp.

Trademarks

Planet is trademark of Planet Technology Corp., all other trademarks throughout this manual are the property of their respective companies.

Limited Warranty

In no event will Planet be liable for any damage, including loss of data or profits, cost of cover, or other incidental, consequential or indirect damages arising from the installation, maintenance, use, performance, failure or interruption of Planet's products, whatever caused and on any theory of liability. This limitation will apply even if Planet has been advised of the possibility of such damage.

CE Mark Warning

This is a Class B product. In a domestic environment, this product may cause radio interference, in which case the user may be required to take adequate measures.

About This Manual

USB Data Link Installation Guide is published by Planet Technology Corp. in 1999. This Revision is issued in Oct. 1999.

Revision

USB Data Link UL-101 User's Guide
Part No.: EMQ-UL101

CONTENTS

INTRODUCTION	1
PACKAGE CHECKLIST	1
FEATURES	1
SYSTEM REQUIREMENTS	2
DRIVER INSTALLATION	2
USB DATA LINK PROGRAM INSTALLATION	4
RUNNING THE USB DATA LINK PROGRAM.....	4
POWER MANAGEMENT AND REMOTE WAKE-UP FUNCTION	6
PROGRAM UNINSTALLATION	6

Introduction

Congratulations on your purchase of the USB Data Link. This unique cable allows you to easily connect two computers via the USB port and instantly transfer files with great speed and ease.

The USB Data Link is your fast solution to peer-to-peer file transfer between two computers via the USB port. The USB Data Link cable provides true plug-n-play capability while transferring files at much greater speed than traditional file transfer products via serial or parallel port. You get around 4 to 8 Mbps of smooth file transfer rate. The USB Data Link application program, a Windows Program Manager-like user interface, provides a very easy to use environment that makes file transfer as easy as drag-and-drop. You simply plug in the USB Data Link and do a one-time installation of the program.

Package Checklist

The USB Data Link product package includes the following items:

- USB Data Link



- Driver and Software Installation Diskette
- This user's manual

Features


The USB Data Link provides the following features:

- Single chip (ASIC) USB host to host communication
- High-speed data transfer rate from 4Mbps to 8Mbps
- Single cable solution for data communication

- Windows 95, 98 and Windows 2000 support
- Easy drag-n-drop file transfer
- Includes print function for remote files
- Includes power management and remote wake-up functions
- Compliant with USB specification 1.1

System Requirements

Before you use the USB Data Link, make sure your computer is an IBM PC-compatible with the following minimum system requirements:

- Intel-compatible 486DX-66 MHz CPU or higher
- One standard USB port (4-pin) and has the symbol 
- Either the following operating systems:
 - Windows 95 OSR2.1 (B version) with USB version 1214
 - Windows 98
 - Windows 2000

Driver Installation

Follow the steps below on installing the USB Data Link for the first time:

1. Power on both computers where you will connect the USB Data Link and make sure that the USB port is enabled and working properly.
2. Plug in the USB cable into the USB port and Windows will detect an unknown device and run the **Add New Hardware Wizard** to assist you in setting up the new device.

3. Insert the USB Data Link driver diskette into the floppy drive and click **Next** to continue.
4. For **WINDOWS 98** users:
 - a. Select **Search for the best driver for your device** and click **Next**.
 - b. Select **Specify a location** and click **Browse**. Change the folder of your floppy drive (ie:**A:\ WIN98**) and click **OK**.
 - c. Double check the directory that Windows prompts. Click **Next**.
 - d. Windows will detect the driver (**usbbc.inf**) and shows the **USB Bridge Cable (Windows 98)**. Click **NEXT** to continue until installation is complete.
 - e. Click **Finish** while installation is complete.
5. For **Windows 95** users:
 - a. Select **Others** and click **Browse**. Change the folder of your floppy drive (ie:**A:\WIN95**) and click **OK**.
 - b. Double check the directory that Windows prompts. Click **OK**.
 - c. Click **Finish** to install drivers.
 - d. Windows will prompt **Please insert windows 95 CD-ROM** and click **OK**.
 - e. Click **Browse** and change the folder of your floppy drive (ie:**A:\ WIN95**) and click **OK**.

- f. Double check the directory that Windows prompts. Click **OK** to continue until installation is complete.

USB Data Link Program Installation

After installing the device driver for the USB DataBridge, you need to install the USB Data Link application program for transferring files:

1. Insert the USB Data Link driver diskette into the floppy disk drive and run the **SETUP** program.
2. The USB Data Link Setup program will start to begin program installation.
3. Follow the instructions on every dialog box to finish the installation.
4. After installation is complete, a shortcut of the USB Data Link program will be placed on your Windows desktop.

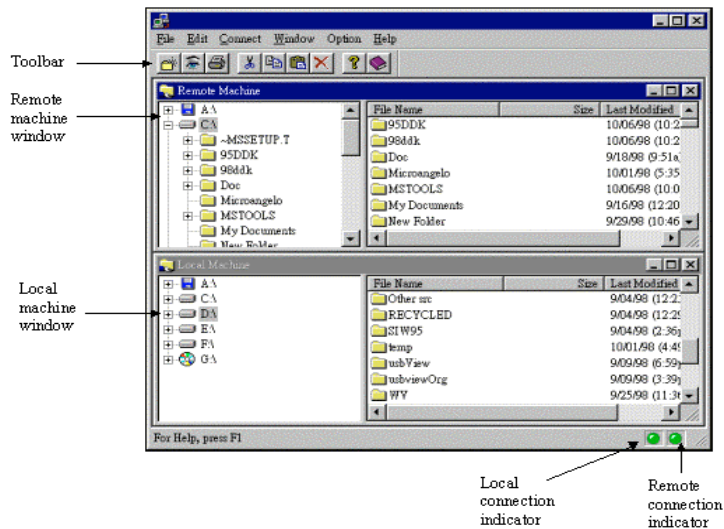
Repeat the same procedure on the other computer.

Running the USB Data Link Program

Follow the steps below on how to run the USB Data Link program:

1. Plug in both ends of the USB Data Link to the two computers.
2. Double-click on the USB Data Link shortcut icon on your desktop screen. Do the same for the other computer.
3. The USB Data Link File Manager will appear on your screen and will detect both the local and remote machine.

This is much similar with Windows Explorer file manager where you can cut, copy, paste, or drag files and folders.



4. There are two LED-like indicators found on the bottom-right corner of the USB Data Link File Manager. These indicators show the connection status of the remote and local machine. The left LED is for the local machine, while the right LED is for the remote machine. A green LED indicates that the connection is good while a red LED indicates that connection is not found. Both LEDs need to be in green color for a proper link and operation. If one LED is red, either the USB cable is not properly connected, or the software is not properly installed, or the PC is in suspend mode.
5. Click on the Help Topics icon (rightmost icon) for more information on how to use the program.

Power management and Remote Wake-up Function

The USB Data Link supports power management of USB. When either of the two connected PC gets into suspend, the USB Data Link will draw less than 500 μA of current from it. This is essential for the notebook or other mobile PC.

The USB Data Link program also includes the remote wakeup function. Whenever the remote machine goes into suspend mode, you just click on any file or folder inside the remote machine directory and the remote machine will resume to normal operation mode.

However, you can disable this function to avoid the annoyance of suspend-wakeup sequence during operating the USB Data Link application. Please click the menu bar's **Option**, then click **Setting**, and disable the **Allow System to Suspend** option.

Program Uninstallation

You can uninstall the USB Data Link application program and driver by selecting the **Uninstall USB DataBridge** item from the USB DataBridge program group and follow the on-screen instructions to complete the process.