

VERIFY THE CONTENTS INSIDE PACKAGE BOX

The package box should contain the items indicated below plus VIP-193. If any item missed or damaged, please contact the seller immediately



Quick Installation Guide



Adapter



Battery

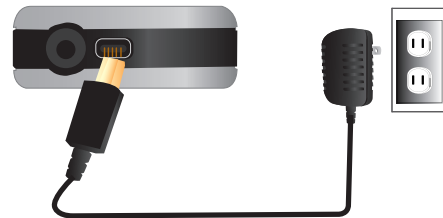


Earphone

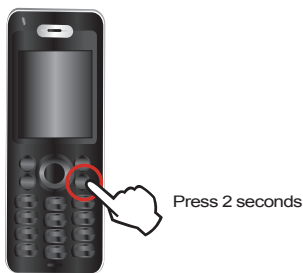
STEP 1: Inserting the Battery



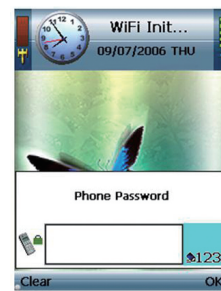
STEP 2: Connect the Power



STEP 3: Power On the device



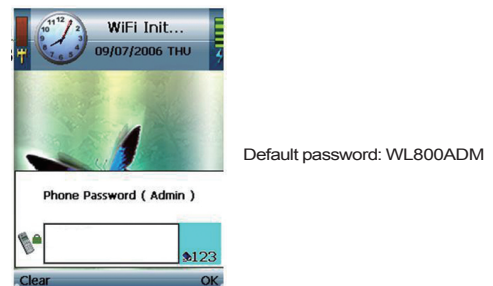
STEP 4: User password mode



STEP 5: Go to Admin password mode



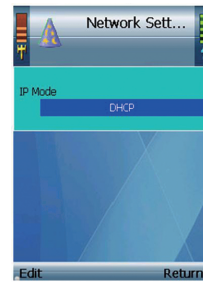
STEP 6: Input Admin password



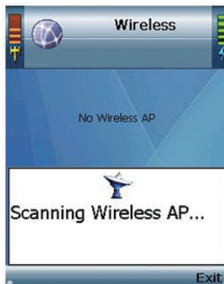
STEP 7: Select Network Settings



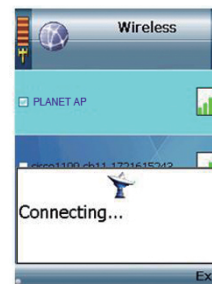
STEP 8: Setup IP Type and parameters



STEP 9: Scan for Wireless network



STEP 10: Connect to Wireless Network



STEP 11: Select SIP Settings



STEP 12: Setup SIP Parameters



STEP 13: Ready to use

