

Thank you for purchasing PLANET 802.11g Wireless USB Adapter, WL-U356L. This quick installation guide illustrates the driver and utility installation steps. For more information, please refer to the User's manual in the bundled CD.

Package Content

WL-U356L x 1

Quick Installation Guide x 1

CD Disk x 1

USB Cable x 1



Note

This guide leads you through the proper installation for WL-U356L in Windows XP system. The installations for other Windows systems are similar.

Installation Procedures



Note

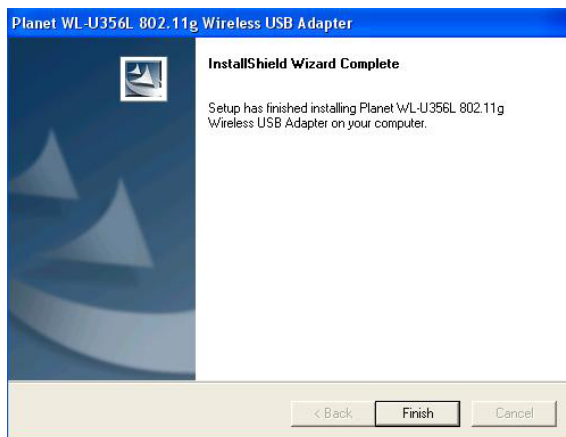
1. If you had ever installed the other Wireless Cards before, please uninstall the existed drivers and utilities first.
2. Please install the configuration utility before insert WL-U356L into the USB port of the computer.

1. Insert the bundled CD into the CD-ROM driver. The Wizard should run automatically to display the menu screen.

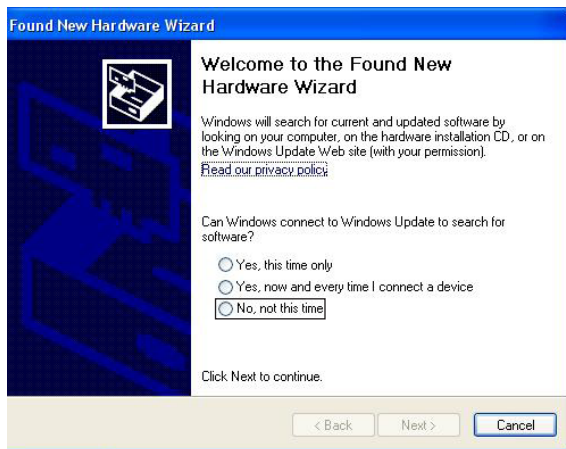
2. Select suitable utility link according to your system. In this example, Windows 98/ME/2000/XP utility is selected.



3. Follow the Install Shield Wizard steps, and click "Finish" when done.



4. Insert WL-U356L into a vacant USB port of your PC. Windows will detect this device automatically. When the "Found New Hardware Wizard" dialog box appears, select "No, not this time", and click "Next" to continue.



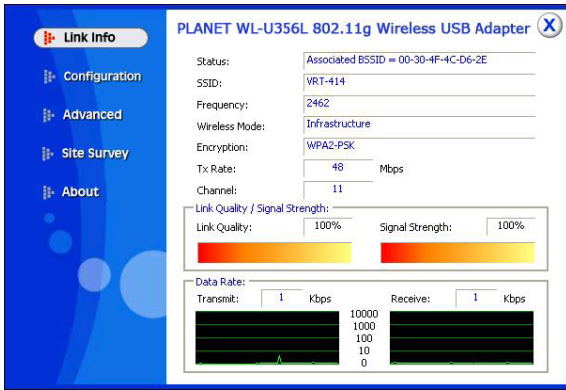
5. Choose the "Install the software automatically" and click "Next".



- The system will locate the correct driver and install it automatically. Click "Finish" to complete the driver installation.



- After successful installation, the configuration utility will be displayed automatically. This card will auto connect to wireless device which has better signal strength and no security setting.



54Mbps | 802.11g Wireless USB Adapter

WL-U356L | Easy to Install, Simple to Use



Quick Installation Guide



2011-E23110-000
 PLANET Technology Corp. PLANET Networking & Communication

Further Configuration

If you want to configure more detail settings of WL-U356L, please refer to the manual in the bundled CD. If you have any difficulty on resolving the problem while installing or using the WL-U356L, please feel free to contact PLANET for support.

