

# **Wireless Presentation Gateway**

**WPG-110**

**Quick Installation Guide**

Thanks for your purchase our wireless presentation gateway. WPG-110 is an easy installation, convenient operation and user friendly projecting device. It facilitates Multi-User to use wireless presentation when you easily change presenters without swapping cables. Besides offering presentation mode, it also supports Video projection, projecting your video file on the screen through WLAN/LAN.

---

## ***Package Content***

1 x WPG-110

1 x CD Disk (User's Manual, Quick Guide)

1 x 5V DC Power adapter

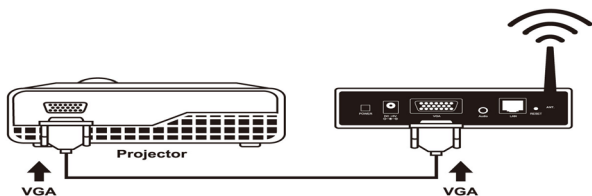
1 x Quick Installation Guide

1 x Wall mount kit

1 x Dipole Antenna

## Quick Start

- 1) Connect VGA cable of projector to VGA connector of WPG-110 and turn on power of projector.



- 2) Turn on WPG-110.

- When Projector shows the default menu on the screen as below, it indicates the WPG-110 is ready now.



- 3) Make sure your PC LAN port or WLAN interface is enabled already, and connect your PC with WPG-110 (wireless default SSID is WPG-110).
- 4) Open your browser and enter the WPG-110 IP address to get in WPG-110 web home page.

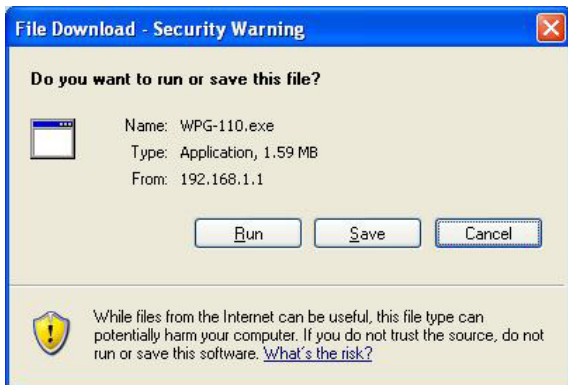


- The default IP address of WPG-110 is DHCP allocated. If you connect to the network that has DHCP server, it will provide you a dynamic IP automatically; otherwise, its default IP address is 192.168.1.1. If you have modified the IP address, you can refer to the IP address shown on the left-down corner of projector screen.

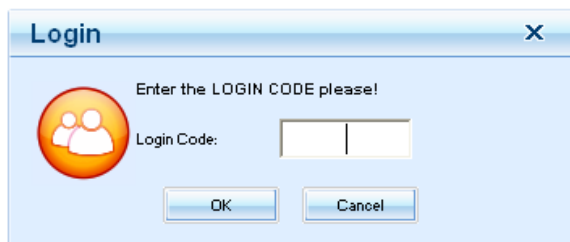
- 5) Please select **“Download”** option from left panel and press **“Download”** button. The Password is empty.



- 6) You will see a file download dialog box appear, press **“Run”** to execute the installation program.



- 7) After install the program, WPG-110 shortcut icon will come out on the desktop.
- 8) If there is any firewall installed in the PC, please make sure it allows WPG-110 software to pass through.
- 9) Enter the **LOGIN CODE** and press **"OK"**.



- You can see the login code on the projector screen
- 10) Click the **"Play"** button to start projection!



---

## ***Further Information***

For detail configuration, please check user's manual on the bundled CD.

If you have any other questions, please contact the dealer where you purchased this product or you can contact PLANET directly at the following email address: [support@planet.com.tw](mailto:support@planet.com.tw)