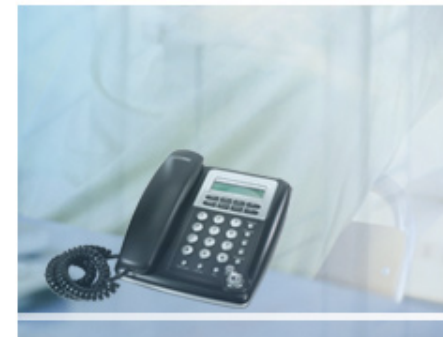


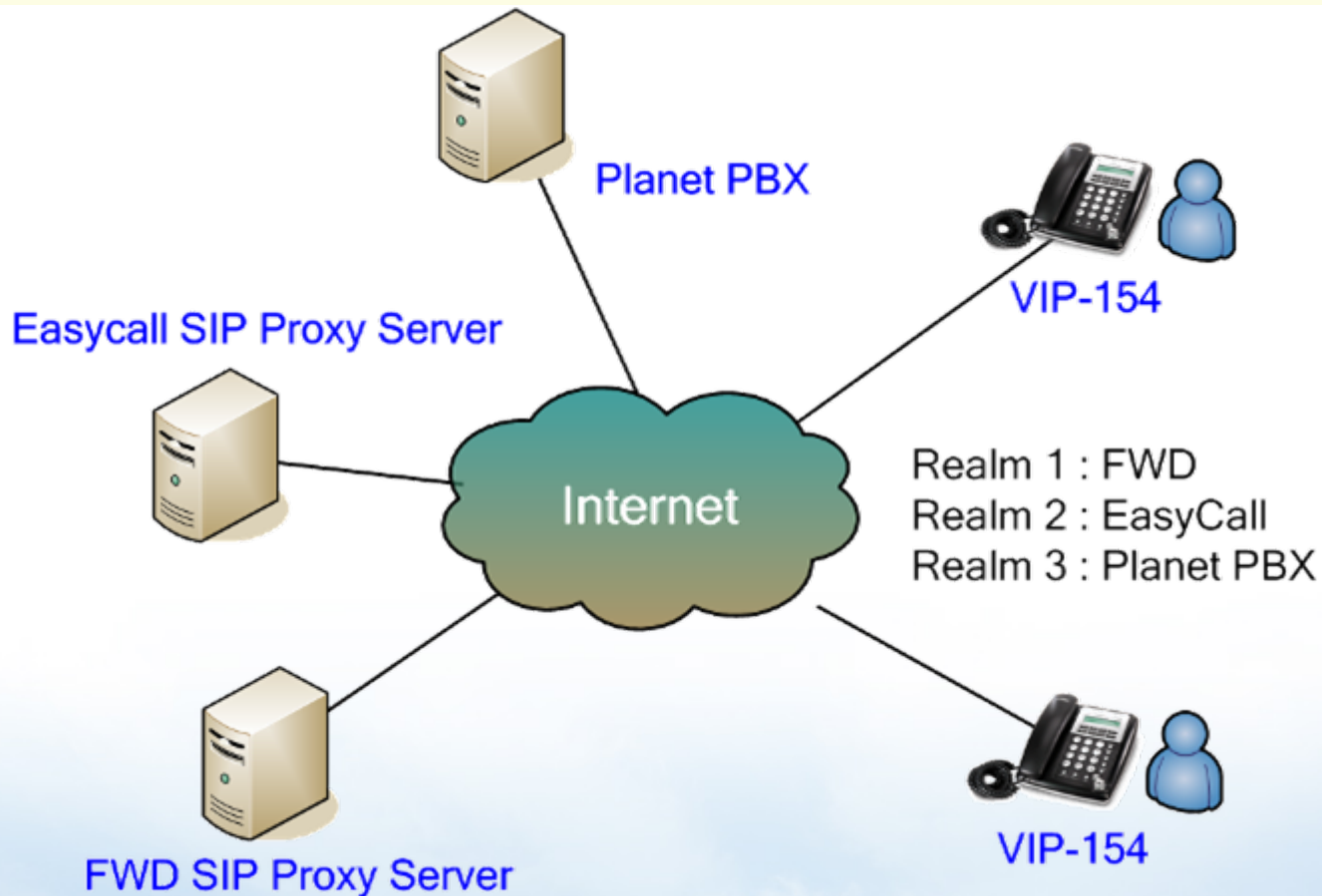
VoIP SIP Phone

**VIP – 154T / 154PT/ 154NT
SIP Proxy Server Install Procedure**



Scenarios explain: SIP Proxy Mode

We're using the free SIP proxy server **FWD** & **EasyCall** to perform the calling party. Please refer to the following descriptions and insert proper SIP registration information into the VIP-154 for establish the voice communications.



You could set information of service domains in this page.

1

Realm 1 (Default)	
Active:	<input checked="" type="radio"/> On <input type="radio"/> Off
Display Name:	288925
Line Number:	288925
Register Name:	288925
Register Password:	●●●
Domain Server:	fwd.pulver.com
Proxy Server:	fwd.pulver.com
Outbound Proxy:	
Status:	Registered

Realm 2	
Active:	<input checked="" type="radio"/> On <input type="radio"/> Off
Display Name:	655768
Line Number:	655768
Register Name:	655768
Register Password:	●●●●●●
Domain Server:	sip.easycall.pl
Proxy Server:	sip.easycall.pl
Outbound Proxy:	
Status:	Registered

After logging in the SIP Phone, Click the [SIP Settings -> Service Domain] to input your SIP account.

Realm 1 (Default)

Active : **On**
 Display Name: **288925**
 Line Number : **288925**
 Register Name: **288925**
 Register Password: **xxxxxx**
 Domain Server: **fwd.pulver.com**
 Proxy Server: **fwd.pulver.com**

Realm 2

Active : **On**
 Display Name: **655768**
 Line Number : **655768**
 Register Name: **655768**
 Register Password: **xxxxxx**
 Domain Server: **sip.easycall.pl**
 Proxy Server: **sip.easycall.pl**

Realm 3

Active:	<input checked="" type="radio"/> On <input type="radio"/> Off
Display Name:	300
Line Number:	300
Register Name:	300
Register Password:	•••
Domain Server:	210.66.155.70
Proxy Server:	210.66.155.70
Outbound Proxy:	
Status:	Registered

Realm 3

Active : **On**

Display Name: **300**

Line Number : **300**

Register Name: **300**

Register Password: **123**

Domain Server: **210.66.155.70**

Proxy Server: **210.66.155.70**

Submit

Reset

2

After confirming the modification you've done, Please click on the **Submit** button to apply settings.

This page inform user important information.

Configure OK.

You have to **save** and **reboot** the VoIP to effect those changes.

SIP Phone
Configuration Menu

Phone Book

Phone Settings

Network

SIP Settings

NAT Trans.

Advanced settings

System Auth.

Save & Reboot

System Settings

Reboot without saving

This page inform user important information.

Configure OK.

System will reboot automatically to effect those changes and please wait for a moment while rebooting....

3

Browser to **Save & Reboot** menu to reboot the machine to make the settings effective.

Realm 1 (Default)	
Active:	<input checked="" type="radio"/> On <input type="radio"/> Off
Display Name:	<input type="text" value="288925"/>
Line Number:	<input type="text" value="288925"/> 4
Register Name:	<input type="text" value="288925"/>
Register Password:	<input type="password" value="•••"/>
Domain Server:	<input type="text" value="fwd.pulver.com"/>
Proxy Server:	<input type="text" value="fwd.pulver.com"/>
Outbound Proxy:	<input type="text"/>
Status:	Registered

You can see the Register Status in the Status item. If the item shows “Registered”, then your Phone Adapter is registered to the ISP, you can make a phone call directly.

Note:

When Registered success, you can try dial **613**, connect to **FWD ECHO TEST**, to test the SIP communication.

Step 1. Pickup up the handset.

Step 2. Press the keypad, input **613**

Step 3. You can hear around three times back tone.

Step 4. Then you'll hear the echo test voice.

Switch the realm (Registration Proxy Server):

The SIP Phone can register to three different SIP Proxies at the same time. It can receive any one of different SIP accounts incoming call, and it can switch to any one SIP accounts for making calls through input the switch code.

Realm switch code:

- 1 * : Realm 1 ---- FWD
- 2 * : Realm 2 ---- EasyCall
- 3 * : Realm 3 ---- Planet PBX

For example:

1.From FWD switch realm to EasyCall

The default is Realm 1, Input the 2* (Follow by the * key) from keypad and hang up the handset. It will switch to Realm 2, and it can make the SIP calls via realm 2.

- Step 1. Pick up the handset
- Step 2. Press the keypad, input the **2***
- Step 3. Hang up the handset (It will switch to EasyCall)
- Step 4. Pick up the handset
- Step 5. Press the keypad, and dial **00 + number of country**

For example:

2. From EasyCall switch realm to PLANET IPX-2000

Just now have Realm at EasyCall account, Input the 3* from keypad and hang up the handset. It will switch to PLANET PBX, and it can make a sip calls via PLANET PBX.

Step 1. Pick up the handset

Step 2. Press the keypad, input the **3***

Step 3. Hang up the handset (It will switch to PLANET IPX-2000)

Step 4. Pick up the handset

Step 5. Press the keypad, input the **6666** (Voice Mail)

Note:

The mentioned parameters and network settings in this sample should be carefully modified to meet the real-world applications.

ACTIVATING IP POWER

