

How to use Call Pick-up function

The followings are the Call Pickup function settings, and all of VoIP devices (ATA, GW and IP Phone) were registered with IP PBX.

- **Pickup Extension: *8**

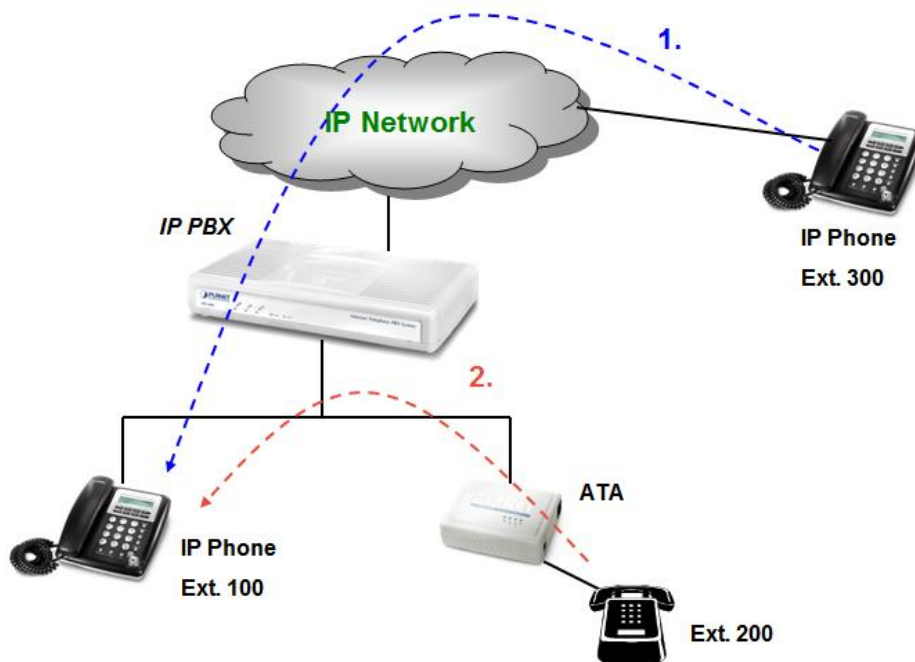


Figure B-1. Call Pickup sample scenario

1. Ext.300 call to Ext.100, and Ext.100 is ringing.
2. Ext.200 dial "***8#**" to pickup the call for Ext.100, and Ext.200 is talking with Ext.300.