

Internet Voice Gateway

**ANI for authentication and dialed-number
identification service**

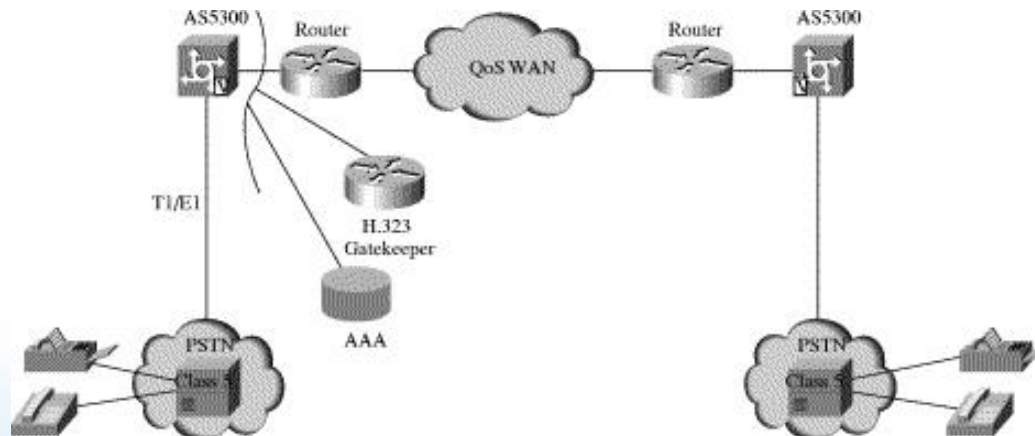


Additionally, the Cisco AS5300/Voice Gateway voice gateway has an IVR application that provides voice prompts and digit collection in order to authenticate the user and identify the call destination.

A variety of IVR scripts are provided by the Cisco IOS software; for example:

- Announcement—can be used as part of a script to greet the user and identify the service
- Automatic number identification (ANI)-based automatic authentication

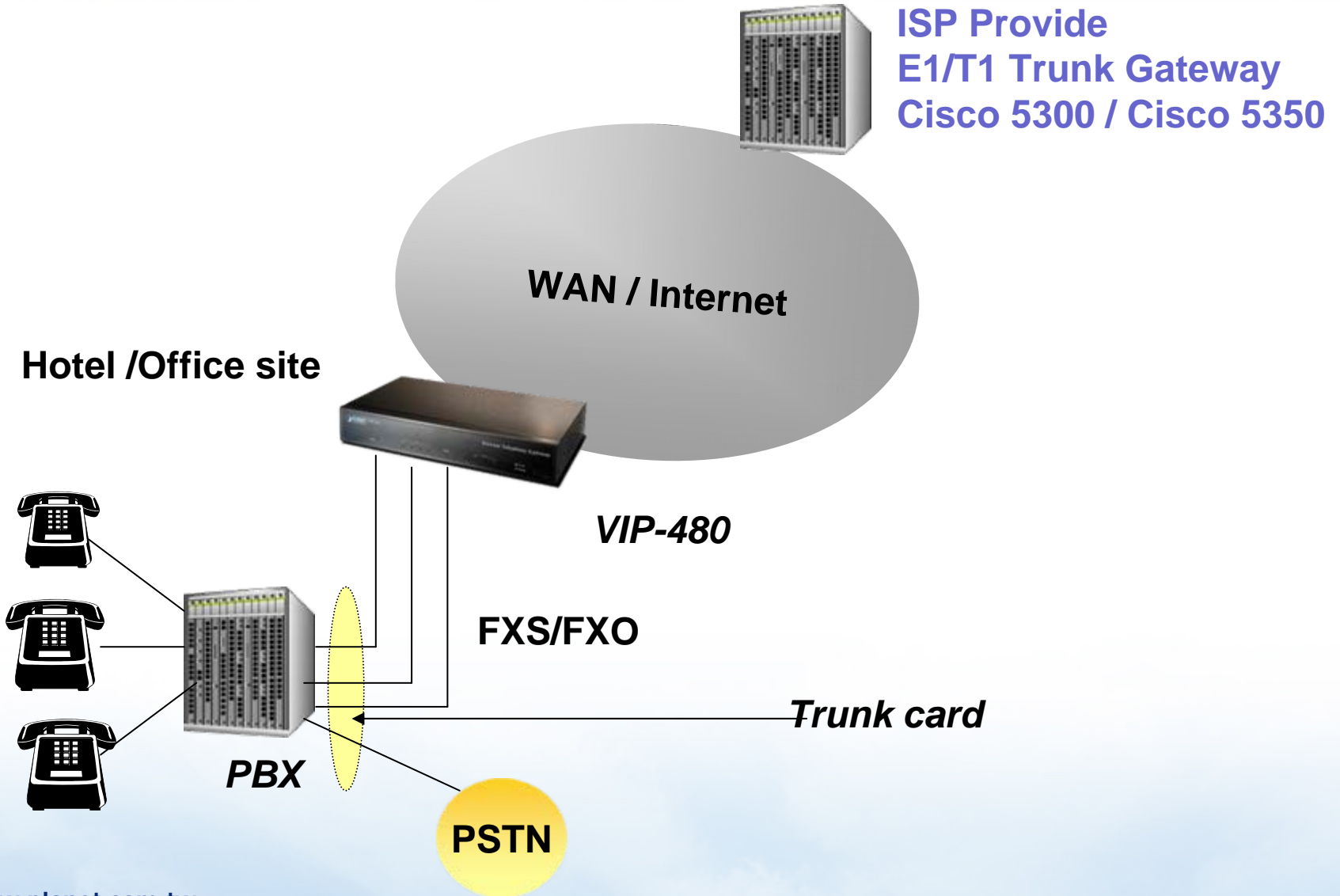
Figure 1: Service Provider Long-Distance Services



ANI for authentication and dialed-number identification service (DNIS) for call routing.

Application Topology

ACTIVATING IP POWER



In VoIP Basic Configuration, the Port 1~4 E.164 number is :

- Port 1 :111
- Port 2 :112
- Port 3 : 113
- Port 4 : 114

VoIP Basic Configuration

VoIP Protocol Setting

E.164 Number Setting (MAX 20 digit) :

Port 1 E.164 Number	<input type="text" value="111"/>
Port 2 E.164 Number	<input type="text" value="112"/>
Port 3 E.164 Number	<input type="text" value="113"/>
Port 4 E.164 Number	<input type="text" value="114"/>

Caller ID / ANI Setting for Off-Net Call Setting (MAX 20 digit) :

Set ANI for GW

- Port 1 :0701234567
- Port 2 : 0701234567
- Port 3 : 0701234567
- Port 4 : 0701234567

Caller ID / ANI Setting for Off-Net Call Setting (MAX 20 digit) :

Port 1 Caller ID / ANI	<input type="text" value="070123456"/>
Port 2 Caller ID / ANI	<input type="text" value="070123456"/>
Port 3 Caller ID / ANI	<input type="text" value="070123456"/>
Port 4 Caller ID / ANI	<input type="text" value="070123456"/>

Network Setup

WAN Setting

LAN Setting

Virtual Server

Network Filter

Dynamic DNS/DNS

Network Management

VoIP Setup

VoIP Basic

Dialing Plan

Advance Setting

Hot Line Setting

Port Status

Outgoing Dial Plan: (maximun 50 entries, maximun length of prefix digits is 16 digit, maximun length of number 20 digit)

Item	Outgoing no.	Length of Number	Delete Length	Prefix no.	Destination IP/DNS	Operation
1	4xxxxxxx	8 ~ 8	0	None	172.16.0.10	
2	5xxxxxxx	8 ~ 8	0	None	172.16.0.20	
3	6xxxxxxx	8 ~ 8	0	None	172.16.0.30	
	<input type="text"/>	<input type="text"/> ~ <input type="text"/>	<input type="text"/>	<input type="text"/>	<input type="text"/>	ADD

Outbound Dial Plan From To

Incoming Dial Plan: (maximun 50 entries, maximun length of prefix digits is 16 digit, maximun length of number 20 digit):

Item	Incoming no.	Length of Number	Delete Length	Prefix no.	Destination telephone port	Register to GK	Operation
1	2xxxxxxx	8 ~ 8	0	None	2	<input type="checkbox"/>	
2	3xxxxxxx	8 ~ 8	0	None	4	<input type="checkbox"/>	

Set call outbound dial rule for calling to Cisco 5350 or Cisco 5300 E1/T trunk GW

ACTIVATING IP POWER

