

**48-Port 10/100/1000Base-T with 4 Shared SFP**

**Managed Gigabit Switch**

WGSW-48000

Quick Installation Guide

# Table of Contents

- 1. Package Content..... 3
- 2. Requirements ..... 4
- 3. Terminal Setup ..... 5
- 4. Logon to the Console ..... 6
- 5. Configure IP address..... 7
- 6. Start Web Management..... 9
- Customer Support .....12

---

## 1. Package Content

Thank you for purchasing PLANET Layer 2 Managed Switch, WGSW-48000. Terms of **"Managed Switch"** means the Switch mentioned titled in the cover page of this Quick installation guide, i.e. WGSW-48000.

Open the box of the **Managed Switch** and carefully unpack it. The box should contain the following items:

- The WGSW Managed Switch x 1
- User's Manual CD x 1
- Quick Installation Guide x 1
- RS232 Cable x 1
- Rubber Feet x 4
- Two Rack-mounting Brackets with Attachment Screws x 1
- Power Cord x 1

If any item is found missing or damaged, please contact your local reseller for replacement.

## 2. Requirements

- Workstations of subscribers running Windows 98/ME, NT4.0, 2000/XP, MAC OS9 or later, Linux, UNIX or other platform compatible with TCP/IP protocols.
- Workstation installed with Ethernet NIC (Network Card)
- Serial Port connect (Terminal)
  - ◆ Above PC with COM Port (DB-9)
- Ethernet Port connect
  - ◆ Network cables - Use standard network (UTP) cables with RJ45 connectors.
  - ◆ Above PC installed with WEB Browser and JAVA runtime environment Plug-in

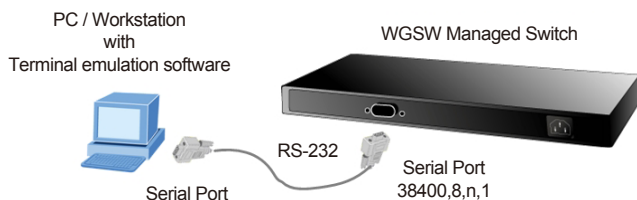


Note

It is recommended to use Internet Explore 6.0 or above to access WGSW Managed Switch.

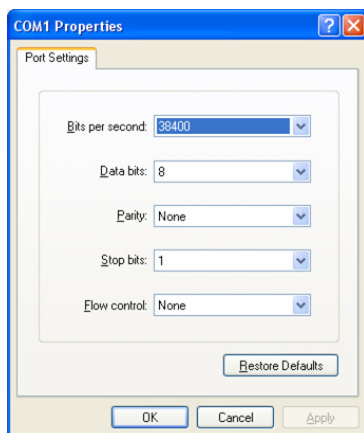
### 3. Terminal Setup

To configure the system, connect a serial cable to a **COM port** on a PC or notebook computer and to serial (console) port of the WGSW Managed Switch. The console port of the Managed Switch is DCE already, so that you can connect the console port directly through PC without the need of Null Modem.



A terminal program is required to make the software connection to the WGSW Managed Switch. Windows' **Hyper Terminal** program may be a good choice. The Hyper Terminal can be accessed from the **Start** menu.

1. Click **START**, then **Programs, Accessories** and then **Hyper Terminal**.
2. When the following screen appears, make sure that the COM port should be configured as:
  - Baud: 38400
  - Parity: None
  - Data bits: 8
  - Stop bits: 1
  - Flow Control: None



## 4. Logon to the Console

Once the terminal has connected to the device, power on the WGSW Managed Switch, the terminal will display that it is running testing procedures.

Then, the following message asks the login user name and password. The factory default username and password as following and the login screen in Figure 4-1 appears.

Login: **admin**  
Password: **admin**

To have access to the full suite of commands, the operator must enter the Privileged Mode. Enter "enable" to into the Privileged Mode and it requires password authentication. From Privileged Mode, the operator can issue any Exec command to enter the Global Configuration mode.

Command> **enable**  
Username: **admin**  
Password: **admin**

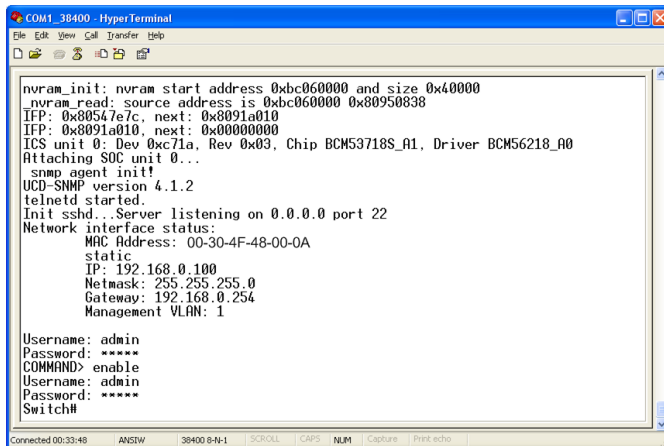


Figure 4-1 WGSW Managed Switch Console Login screen



Note

1. For security reason, please change and memorize the new password after this first setup.
2. Only accept command in lowercase letter under console interface.

## 5. Configure IP address

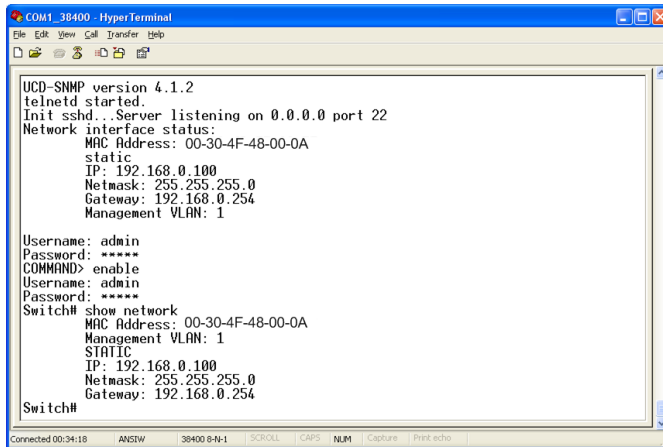
The WGSW Managed Switch is shipped with default IP address as following.

IP Address : **192.168.0.100**  
Subnet Mask : **255.255.255.0**

To check the current IP address or modify a new IP address for the Managed Switch, please use the procedures as follow:

### ■ Show the current IP address

1. On "**Switch#**" prompt, enter "**show network**".
2. The screen displays the current IP address, Subnet Mask and Gateway. As show in Figure 5-1.



```
COM1_38400 - HyperTerminal
File Edit View Call Transfer Help
[Icons]
UCD-SNMP version 4.1.2
telnetd started.
Init sshd...Server listening on 0.0.0.0 port 22
Network interface status:
  MAC Address: 00-30-4F-48-00-0A
  static
  IP: 192.168.0.100
  Netmask: 255.255.255.0
  Gateway: 192.168.0.254
  Management VLAN: 1
Username: admin
Password: *****
COMMAND> enable
Username: admin
Password: *****
Switch# show network
  MAC Address: 00-30-4F-48-00-0A
  Management VLAN: 1
  STATIC
  IP: 192.168.0.100
  Netmask: 255.255.255.0
  Gateway: 192.168.0.254
Switch#
```

Connected 00:34:18    ANSW    38400 8-H-1    SCROLL    CAPS    NUM    Capture    Print echo

Figure 5-1 Show IP information screen

## ■ Configure IP address

3. On "**Switch#**" prompt, type "**configuration**" to enter into global configuration mode.
4. On "**Switch(Config)#**" prompt, enter the following command and press **<Enter>**. As show in Figure 5-2.

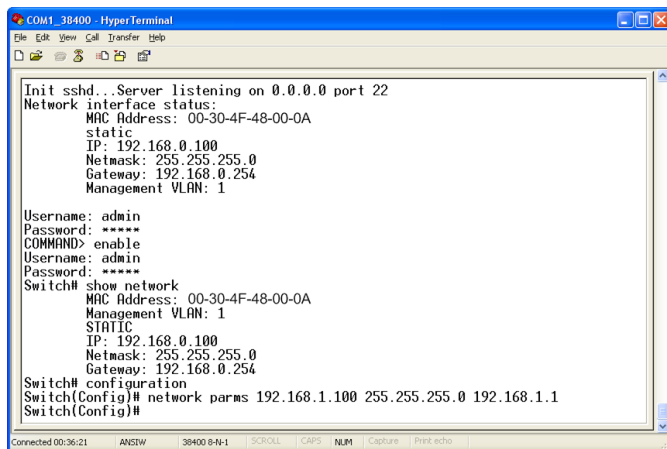
```
Switch(Config)# network parms 192.168.1.100 255.255.255.0
192.168.1.1
```

The previous command would apply the follow settings for the Managed Switch.

**IP: 192.168.1.100**

**Subnet Mask: 255.255.255.0**

**Gateway: 192.168.1.1**



```
Init sshd...Server listening on 0.0.0.0 port 22
Network interface status:
MAC Address: 00-30-4F-48-00-0A
static
IP: 192.168.0.100
Netmask: 255.255.255.0
Gateway: 192.168.0.254
Management VLAN: 1

Username: admin
Password: *****
COMMAND> enable
Username: admin
Password: *****
Switch# show network
MAC Address: 00-30-4F-48-00-0A
Management VLAN: 1
STATIC
IP: 192.168.0.100
Netmask: 255.255.255.0
Gateway: 192.168.0.254

Switch# configuration
Switch(Config)# network parms 192.168.1.100 255.255.255.0 192.168.1.1
Switch(Config)#
```

**Figure 5-2** Set IP address screen

5. Repeat Step 1 to check if the IP address is changed.
6. On "**Switch#**" prompt, type "**Save**" to save the current configuration.

If the IP is successfully configured, the Managed Switch will apply the new IP address setting immediately. You can access the Web interface of WGSW Managed Switch through the new IP address.



If you do not familiar with console command or the related parameter, enter "**?**" anytime in console to get the help description.



## 6. Start Web Management

The following shows how to startup the **Web Management** of the WGSW Managed Switch. Note the Managed Switch is configured through an Ethernet connection, please make sure the manager PC must be set on the same **IP subnet address**.

For example, the default IP address of the WGSW Managed Switch is **192.168.0.100**, then the manager PC should be set at **192.168.0.x** (where x is a number between 1 and 254, except 100), and the default subnet mask is 255.255.255.0.

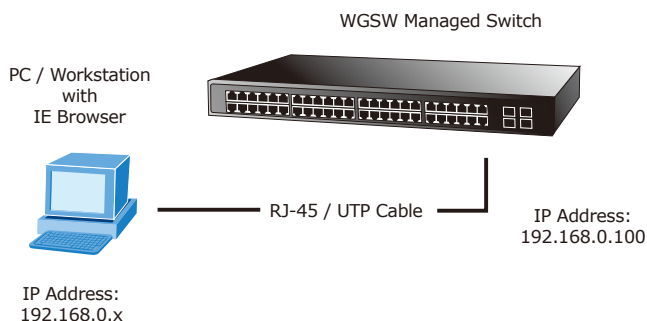
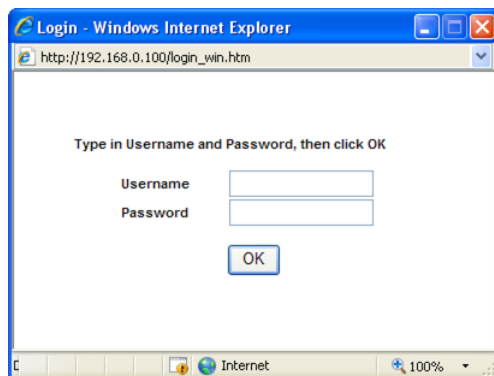


Figure 6-1 IP Management diagram

### ■ Login the Managed Switch

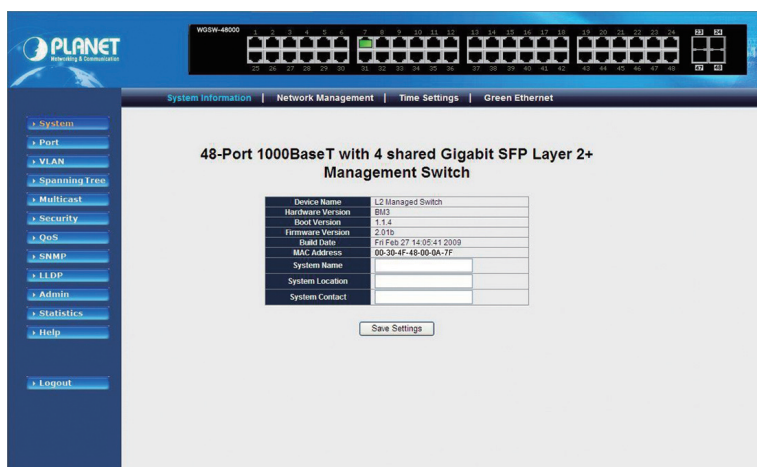
1. Use Internet Explorer 6.0 or above Web browser, enter IP address **<http://192.168.0.100>** (the factory-default IP address or that you have just changed in console) to access the Web interface.
2. When the following dialog box appears, please enter the default username "admin" and password "admin" (or the password you have changed via console). The login screen in Figure 6-2 appears.

Username: **admin**  
Password: **admin**



**Figure 6-2** Login screen

3. After entering the password, the main screen appears as Figure 6-3.



**Figure 6-3** Web Main Screen of WGSW Managed Switch

4. The Switch Menu on the left of the Web page let you access all the commands and statistics the Switch provides.

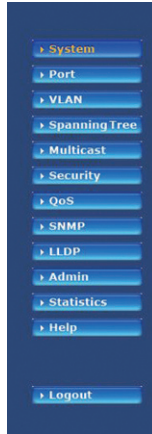


Figure 6-4 Switch Menu



Note

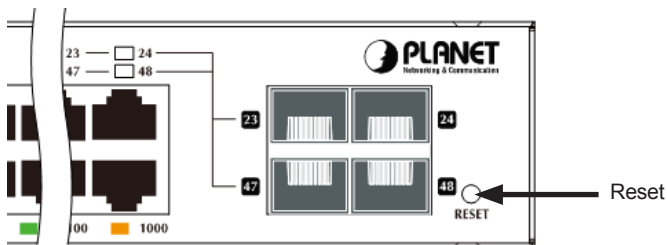
If you do not familiar with Switch functions or the related parameter, press **"Help"** button anytime in left menu of the Web page to get the help description.

Now, you can use the Web management interface to continue the Switch management or manage the Switch by console interface.

Please refer to the user manual for more.

■ While IP Address be changed or forgotten admin password –

To reset the IP address to the default IP Address "192.168.0.100" and reset the login password to default value. Press the hardware **reset button** at the front panel about **10 seconds**. After the device is rebooted, you can login the management WEB interface within the same subnet of 192.168.0.xx.



## ***Customer Support***

Thank you for purchase PLANET products. You can browse our online FAQ resource at the PLANET website first to check if it could solve you issue. If you need more support information, please contact PLANET switch support team.

PLANET online FAQ :

<http://www.planet.com.tw/en/support/faq.php>

Switch support team mail address :

[support\\_switch@planet.com.tw](mailto:support_switch@planet.com.tw)

Copyright © PLANET Technology Corp. 2009.

Contents subject to revision without prior notice.

PLANET is a registered trademark of PLANET Technology Corp.

All other trademarks belong to their respective owners.