

NVR-B3211.28.62.211206 Release Notes

Zhejiang Uniview Technologies Co., Ltd.

NVR-B3211.28.62.211206 Release Notes

Keywords: Version information, usage notes, precautions.

Abstract: This document provides information about the **NVR-B3211.28.62.211206** board software, including version information, usage notes, precautions, and features.

Acronym

Acronym	Full Name
NVR	Network Video Recorder

Contents

1 Version Information.....	3
1.1 Version Number.....	3
1.2 Applied Product Models.....	3
1.3 Release History.....	3
2 Usage Notes.....	4
3 Software Features.....	4
4 Version Change Description.....	4
4.1 Feature Change Description.....	4
4.2 Operation Change Description.....	7
5 Related Documents and Delivery Method.....	7
6 Version Upgrade Guidance.....	7
6.1 Precautions.....	7
6.2 Upgrade Procedure.....	7
6.3 Upgrade Through the System Interface.....	7
6.4 Upgrade Through the Web Interface.....	8

1 Version Information

1.1 Version Number

NVR-B3211.28.62.211206

1.2 Applied Product Models

Table 1 Applied Product Models

Product Models	Description
NVR302-08S-P8	2 slots, 8-ch, 8 PoE interfaces, H.264, H.265, 4K ultra HD.
NVR302-16S-P8	2 slots, 16-ch, 8 PoE interfaces, H.264, H.265, 4K ultra HD.
NVR302-16S-P16	2 slots, 16-ch, 16 PoE interfaces, H.264, H.265, 4K ultra HD.
NVR302-09S	2 slot, 9-ch, H.264,H.265 and 4K ultra HD.
NVR302-16S	2 slot, 16-ch, H.264,H.265 and 4K ultra HD.

1.3 Release History

Table 2 Released Versions

Version No.	Basic Version No.	Released On
NVR-B3211.28.62.211206	NVR-B3211.28.60.210401	2021-12-06
NVR-B3211.28.60.210401	NVR-B3211.28.50.201120	2021-04-01
NVR-B3211.28.50.201120	NVR-B3211.28.45.200807	2020-11-20
NVR-B3211.28.45.200807	NVR-B3211.28.41.200723	2020-08-07
NVR-B3211.28.41.200723	NVR-B3211.28.36.200513	2020-07-23
NVR-B3211.28.36.200513	NVR-B3211.28.26.200319	2020-05-13
NVR-B3211.28.26.200319	NVR-B3211.28.20.200113	2020-03-19
NVR-B3211.28.20.200113	NVR-B3211.28.15.191223	2020-01-13
NVR-B3211.28.15.191223	NVR-B3211.27.50.191108	2019-12-23
NVR-B3211.27.50.191108	NVR-B3211.27.45.191015	2019-11-08
NVR-B3211.27.45.191015	NVR-B3211.27.40.190905	2019-10-15
NVR-B3211.27.40.190905	NVR-B3211.27.35.190801	2019-09-05
NVR-B3211.27.35.190801	NVR-B3211.27.30.190712	2019-08-01
NVR-B3211.27.30.190712	NVR-B3211.27.25.190621	2019-07-12
NVR-B3211.27.25.190621	B3226P35	2019-06-21
B3226P35	B3226P30	2019-04-29
B3226P30	B3226P25	2019-04-02

B3226P25	B3226P23	2019-02-25
B3226P23	B3226P22	2018-12-26
B3226P22	B3226P11	2018-12-07
B3226P11	B3225P30	2018-10-22
B3225P30	B3225P22	2018-09-03
B3225P22	B3225P21	2018-07-26
B3225P21	B3225P10	2018-07-07
B3225P10	B3202P41	2018-05-21
B3202P41	B3202P30	2018-04-12
B3202P30	B3202P22	2018-01-04
B3202P22	B3202P21	2017-11-24
B3202P21	B3202P06	2017-11-21
B3202P06	B3202P01	2017-09-20
B3202P01	Initial release	2017-08-31

2 Usage Notes

None.

3 Software Features

Table 3 Software Features

Service	Feature
Audio and video decoding	H.264 and H.265, 4K resolution display, up to 16Mbps bit rate.
Data storage	Local storage of recordings in hard disk(s).
Web-based management	Web-based user interface for device configuration and management.

4 Version Change Description

4.1 Feature Change Description

Table 4 NVR-B3211.28.26.200319 Feature Changes

Item	Feature	Description
Newly added features	Mask detection	Support alarm and configuration of mask detection cameras.
Improved features	None	None.

Item	Feature	Description
Deleted features	None	None.

Table 5 NVR-B3211.28.15.191223 Feature Changes

Item	Feature	Description
Newly added features	Separate camera name and it's OSD	Support syncing camera name (up to 40 characters) to its OSD name. The sync function is enabled by default.
	Improved error message in preview page	More detailed messages such as incorrect password and network error are displayed in preview page, so that user experience improved.
	Support disabling third stream audio	Support disabling third stream audio and copying audio settings to multiple channels.
	Connect video doorbell	Support video doorbell, which, when connected to the app via an NVR, doorbell calling alarm can be received both on the NVR and the app.
Improved features	Improved playback	Support setting skip interval for forwarding and rewinding playback.
	Improved storage settings	Support encoding settings of third stream, and more Storage Mode options, so that solve the problem that camera with no third stream cannot play back in SD mode.
	Save password	Support saving password.
Deleted features	None	None.

Table 6 NVR-B3211.27.25.190621 Feature Changes

Item	Feature	Description
Newly added features	H.265	Auto switch to H.265 when first connected is enabled by default.
	Live view without plug-in	Live view is available without plug-in on the Web interface.
	LPR	Add license plate recognition display page.
	New local interface	New local GUI; New interaction design in wizard, channel configuration, playback and VCA.
Improved features	Retrieve password	Retrieve password by email and mobile client.
	Preset patrol	Up to 32 presets are allowed for one preset patrol.
	Playback in main stream	Playback in standard definition automatically switches to main stream for a maximized window.
	Separate permissions	Separate channel live view and audio permissions.
	Alarm configuration	Add human body detection.
	Improve switching performance when maximizing/restoring window	For connected Topsee cameras, live video starts quickly when maximizing or restoring window.
Deleted features	Face recognition	Support adding face snapshots to face library.
	None	None.

Table 7 B3226P23 Feature Changes

Item	Feature	Description
Newly added features	None	None
Improved features	None	None
Deleted features	3G/4G	Support 3G/4G SIM card.

Table 8 B3226P11 Feature Changes

Item	Feature	Description
Newly added features	LPR	Whitelist/blacklist vehicle plate recognition.
	Heat map	Support heatmap statistics and export.
	GA/T1400	Upload face & plate snapshots to VMS.
	Add device without account	Scan to add NVR on app without cloud account.
	Onvif	Support Profile S.
	Pattern unlock	Support drawing pattern to unlock.
	Alarm push notification	Push alarm notification traversing NAT.
	Web maintenance	Add net detection & network flow.
	Auto add IPC	Automatic search and add IPC for 1-SATA NVR with zero configuration.
	GDPR	Add GDPR privacy statement.
Improved features	Improved PTZ presets	Configurable PTZ preset name.
	Improved live view startup speed	IPC live view starts up quickly.
Deleted features	None	None.

Table 9 B3225P10 Feature Changes

Item	Feature	Description
New features	Video&Image DB (Phase 1)	Vehicle license plate recognition and search.
	Alarm report	Alarm report in non-subscribe mode, with configuration added on local interface.
	Multicast	Add uplink RTSP multicast function
Improved features	U-Code	U-Code configuration for sub and third streams.
	VCA alarm	Added object left behind and removal alarms
	APP collaboration	Improves image display speed on APP.
	Playback	Supports 32x playback on VMS-B200
	CDN (RTMP)	Added channel-based CDN configuration

Item	Feature	Description
	Prompt to change password	Added a message prompting user to change temporary password
	Device connection	Supports adding channels in batch via RTSP
Deleted features	None	None

4.2 Operation Change Description

None

5 Related Documents and Delivery Method

Table 10 Related Document List

Manual Name	Manual Version	Delivery
Network Video Recorders Quick Guide	V1.00	Deliver with device.

6 Version Upgrade Guidance

6.1 Precautions

- This software system includes a software program mirror (Program.bin). Before you start upgrade, please back up configuration data through the system or Web interface in case the upgrade fails.
- Maintain proper network connection and power supply during the upgrade.

6.2 Upgrade Procedure

The version can be upgraded through the system interface and the Web interface, both support cloud upgrade.

6.3 Upgrade Through the System Interface

The system interface provides two options for upgrading the system software: local upgrade using a USB drive and cloud upgrade.

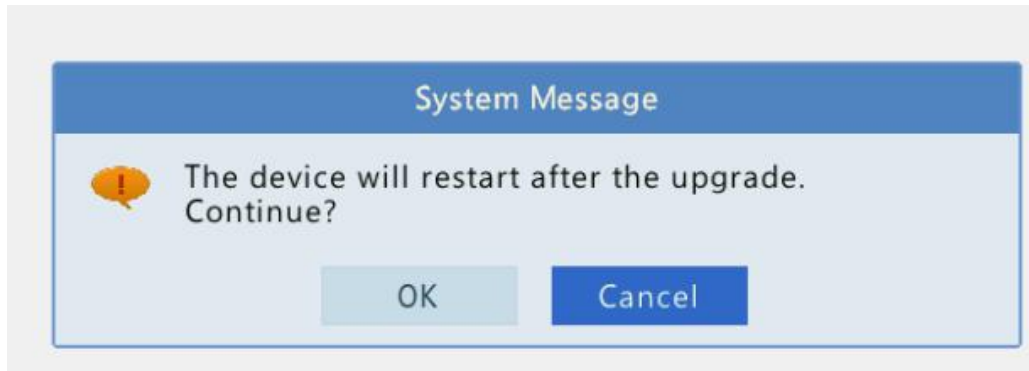
1. Local upgrade

Before you start, copy the correct upgrade file to the root directory of the USB drive.

- (1) Plug the USB drive into the USB interface on the NVR.
- (2) Log in to the system interface as "admin".
- (3) Click **Maintain>Upgrade**.
- (4) Click **Upgrade**, select the upgrade file from the drop-down list, and then click **Upgrade**. A prompt message appears.

- (5) Click **OK**.

Figure 1 Prompt Message



- (6) The NVR will restart automatically when the upgrade is completed.

2. Cloud upgrade

Before you start, check that the NVR is correctly connected to the public network.

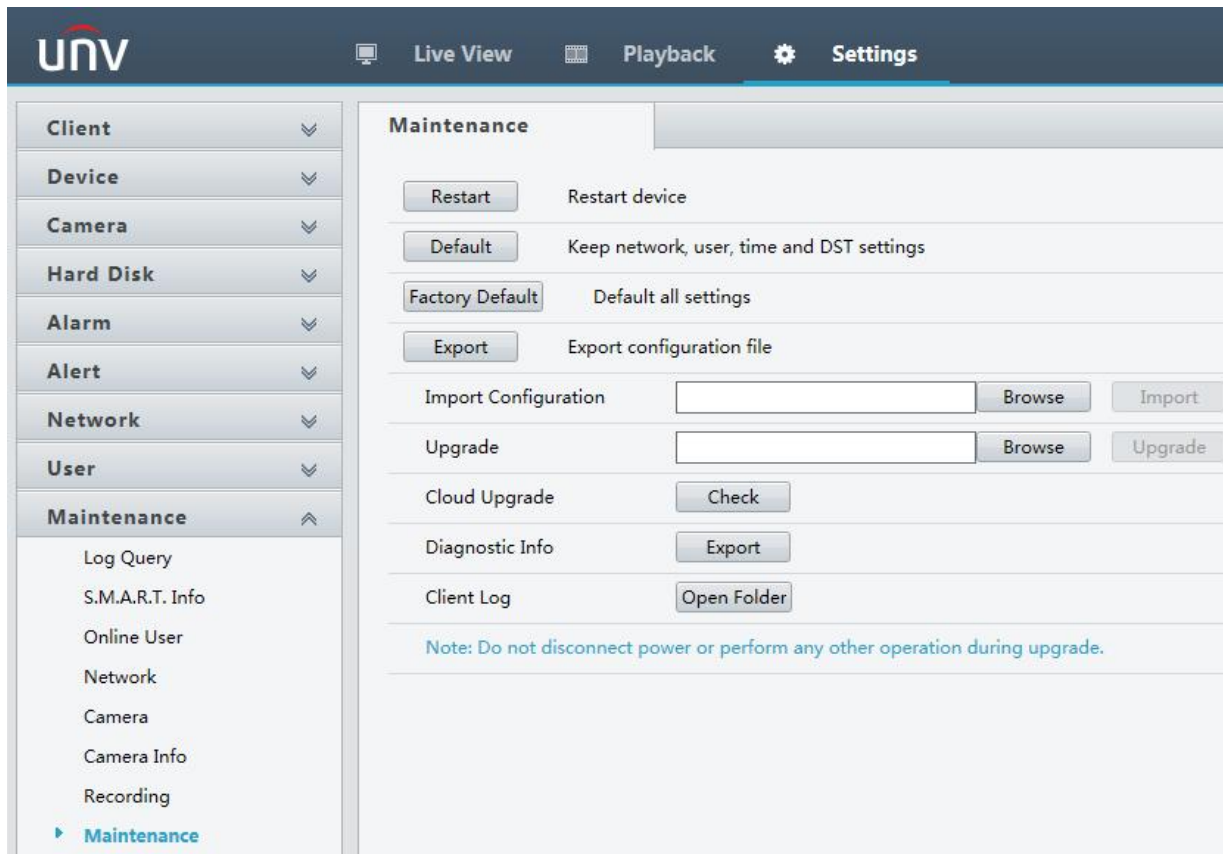
- (1) Click **Maintain>Upgrade**, and then click **Check** to check for the latest version.
- (2) Click **Upgrade** after a newer version is detected.

6.4 Upgrade Through the Web Interface

Perform the following steps to upgrade through the Web interface:

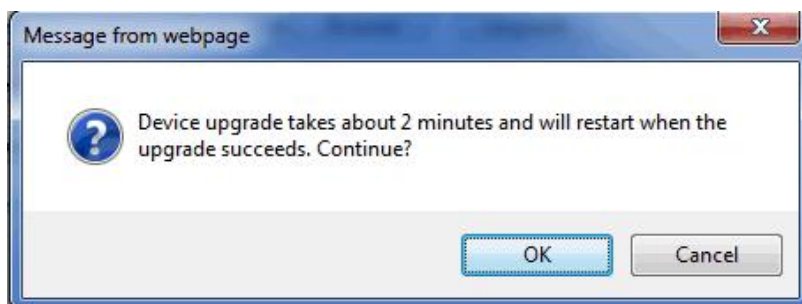
- (1) Log in to the Web interface as "admin".
- (2) Click **Settings>Maintenance>Maintenance**.

Figure 2 System Maintenance



- (3) Click **Browse** right to the **Upgrade** field, select the **Program.bin** file to upgrade, and then click **Upgrade**.
- (4) If the NVR is connected to the public network, you may also click **Check** to perform a cloud upgrade. If a newer version is detected, a prompt message will appear. Click **OK** to start upgrade.

Figure 3 Prompt Message



- (5) The NVR will restart automatically when the upgrade is completed.

© 2021, Zhejiang Uniview Technologies Co., Ltd. All Rights Reserved.

No part of this manual may be reproduced or transmitted in any form or by any means without prior written consent of Zhejiang Uniview Technologies Co., Ltd.

The information in this manual is subject to change without notice.