



SINGLE FAMILY VIDEO INTERCOM SYSTEM

DPC-432W outdoor camera



- CAMERA ANGLE ADJUSTABLE
- NAMEPLATE CALL BUTTON
- INFRARED NIGHT VIEW FUNTION

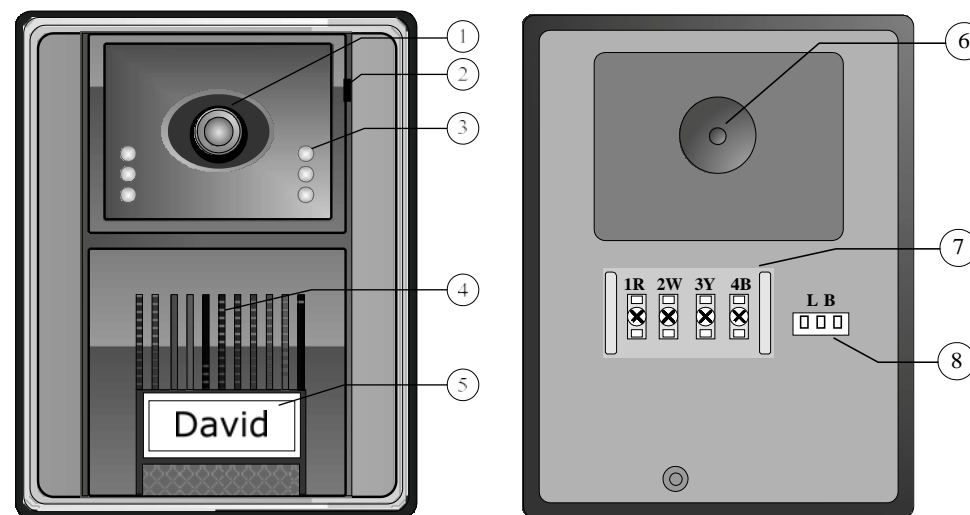
DPC-432W Manual

Outdoor Camera (Outdoor Station)

Features:

- Suitable for 4-wires Single Entry system, compatible with DPM-4xx serials of monitors
- Call button with blue backlight nameplate , up to 4 Monitors directly
- Flush mount, and easy to be installed in a 86x86 box
- Capable of installing with Rainy Cover in flush or surface mount.

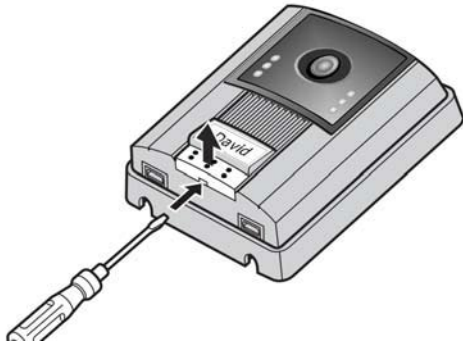
Parts and Functions:



Dimensions: 130(H)x98(W)x40(D)

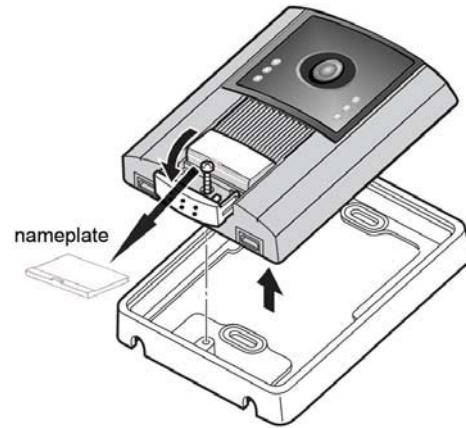
- 1. Camera lens:** To capture the video image of the visitor.
- 2. Microphone:** To collect the voice of the visitor.
- 3. Night view LED:** To enhance the brightness when the outside is dim.
- 4. Speaker:** To send out the voice from the indoor.
- 5. Call button:** To call the indoor monitor.
- 6. Angle adjust:** To adjust different angles of the camera lens.
- 7. Connection Port:** To connect to the indoor monitor, C3-4P cable should be used.
(NOTE: 1R-power positive, 2W-power negative, 3Y-video signal, 4B-audio and data)
- 8. Unlock Port LB:** To connect to the electronic lock, C3-3P cable should be used.

Mount Instruction:



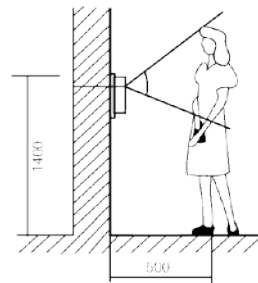
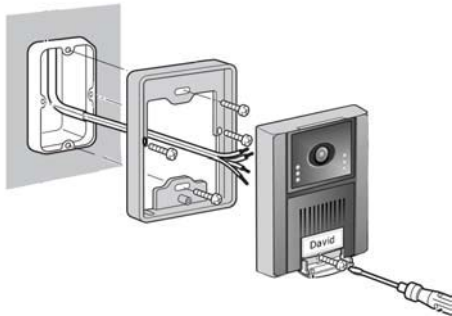
how to take off the mounting bracket

Use a screwdriver to put up the cover underside the call button(with nameplate); screw out the screw and take off the bracket.



how to placed the nameplate

Turn around the cover, and take out the nameplate salver; put the paper with your own name on the salver and insert it back to the socket.



- Make a hole of 75X75X35mm on the wall, and fix the mounting bracket. If possible, an existing 86x86 box can be used.
- Wire the cables, and test the single entry system until it works. Adjust the camera angle if necessary.
- Fix body with bracket, then tight the screw firmly.

Precautions:

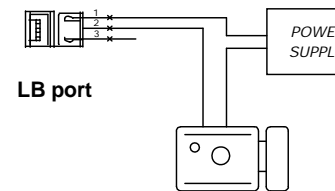
- Do not install in a place where there would be a bright light behind a visitor (or where there would be a bright background), or in a place where the camera lens would be directly exposed to sunlight or a bright light. If light comes in on the unit's screen, the image looks white or silhouetted. But this is not a unit trouble.
- Do not install the unit in places where High or extreme cold temperature, moisture or humidity extremes, Constant vibration or impact, steam or smoke.

Specifications:

- Power Supply: DC 10~12V (Powered by Monitors)
- Power Consumption: 150mA in working state (not including the latch activating)
- Video Output: 75 Ohm Impedance, 1Vp-p, CCIR standard (unless specified)
- Camera: 76 degree, CCD or CMOS camera with IR-LED for night vision
- Working temperature: -10 ~ 40 Centigrade

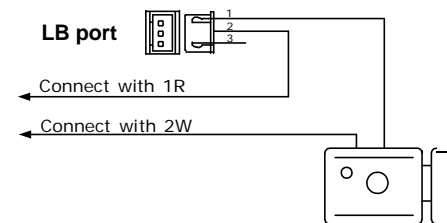
Electronic Latch connecting instructions

- **Mode 1: With Monitor's JP-LK Jumper (Dry contact)**



Extra power supply for latch must be installed, and nearly all kinds of electronic latch can be used. Incidentally, in this mode, you can continue talking and monitoring during unlock operation.

- **Mode 2: Without JP-LK Jumper (DC output)**



The Latch can directly connect with the Door Station and use the power from monitor. During unlock operation, the screen of indoor monitor will close automatically. The Latch's rated voltage is DC 12V, less than 500mA consumption.

Note: Please use right and specific Latch.