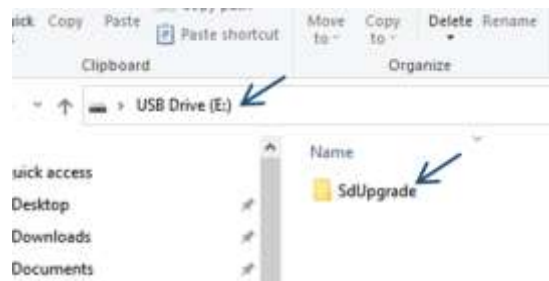


Offline Update (via SD card)

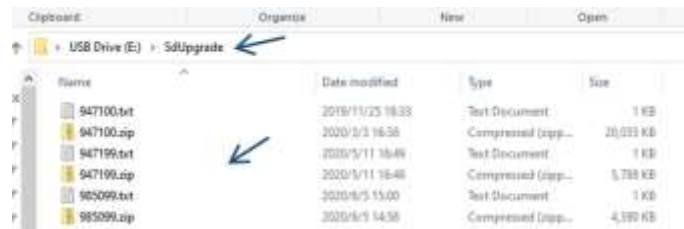
IP device update is also support offline update.

Copy firmware to SD card

Download and copy firmware to SD card, the file structure must as below, all firmware files must storage in folder “**SdUpgrade**” in the root directory of SD card



Firmware files as below:



Structure as below:

USB Drive (D:)/
SdUpgarde/

9471xx.txt
9471xx.zip
9850xx.txt
9850xx.zip

9471xx.txt and 9471xx.zip usually for monitor update package.

9850xx.txt and 9850xx.zip usually for door station 850 update.

Update door station DPC-IP850

Copy firmware to SD card and insert into DPC-IP850 (SD card slot is at the back)



Enter Installer mode as below:

on main screen of DPC-IP850, press “KEY” button → input code “990166666666”, then press “OK” to enter Installer Mode (now you can see the top bar of screen turn to BLUE)
When door station in “installer mode”, tap middle of blue bar -> “settings” -> “backup and restore” -> “Upgrade” in 2nd page.



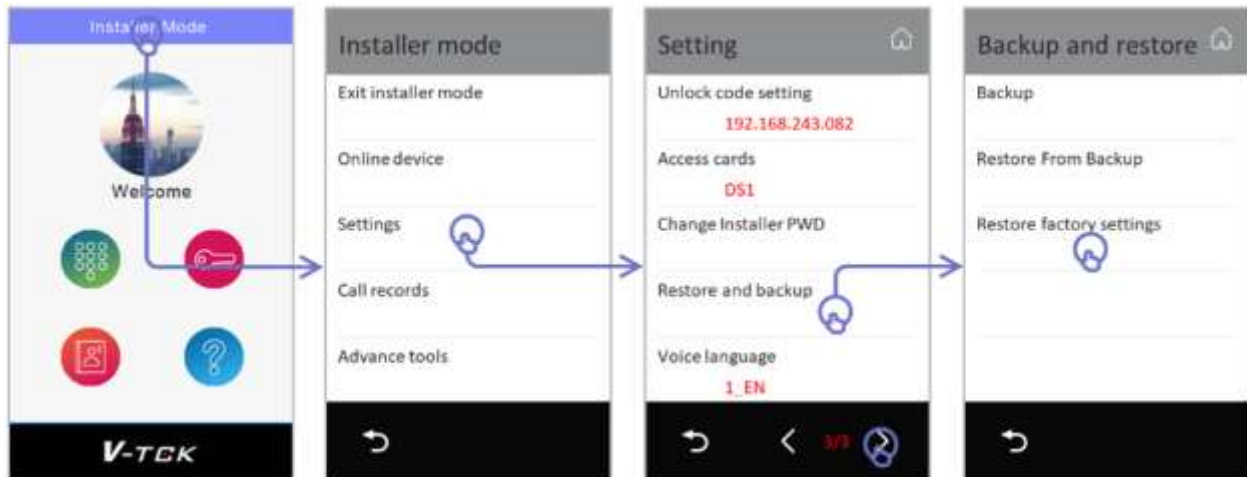
Configure as below (tap Server to choose “SD card”, tap “download code” to input 985000)

Server	Download code
SD card	985000 (EN Standard)

Tap “Check” and once again confirm to update firmware for DPC-IP850.

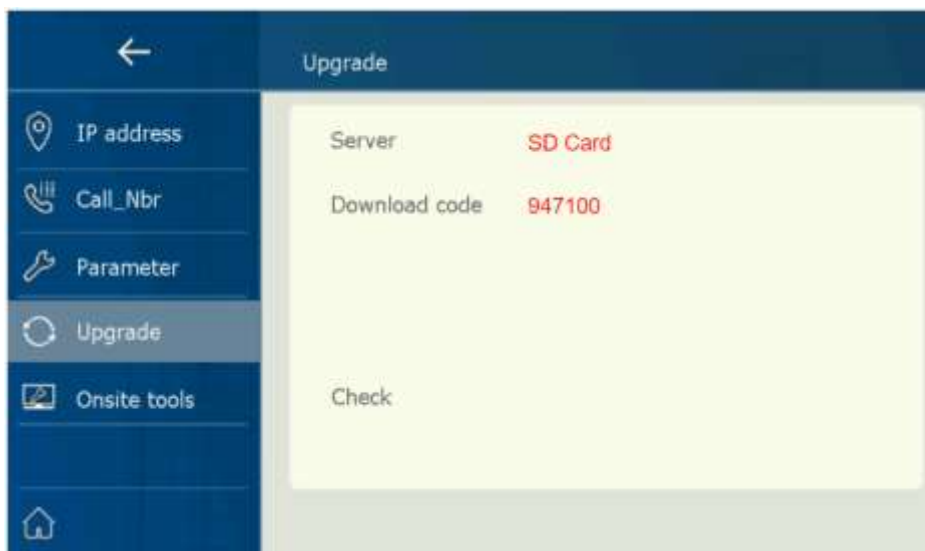
After update initialize the device by below:

When door station IX850 in “Installer Mode”, tap in the middle of blue bar -> “settings” -> “Factory default”



Update monitor DPM-IP71TMv2

On IX471, tap “Settings” -> “Installer” -> “Upgrade”, in “Server” select “SD card”



Configure as below:

Server	Download code
SD card	9471XX

Tap “**Check**” and then “**Install**” to install the updates.

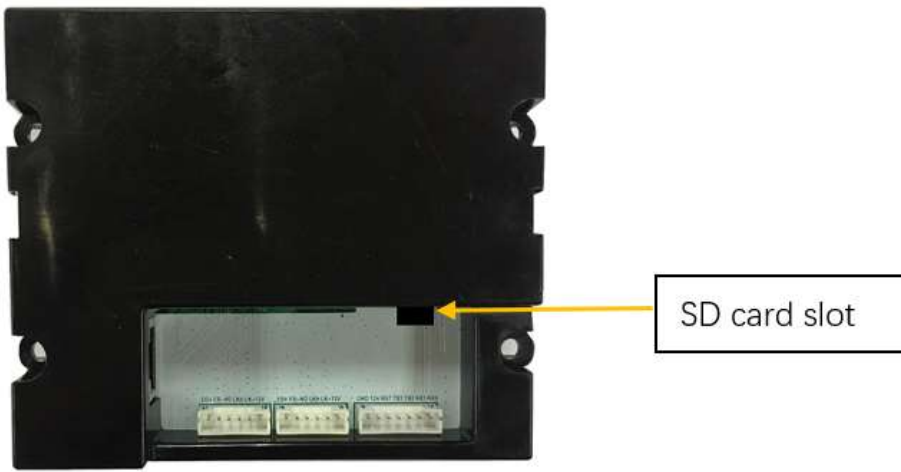
After update should initialize the device: Tap “Settings” -> “Manger” -> “Backup and restore” -> “Restore factory settings”.


Update Door Station DPC-IP81

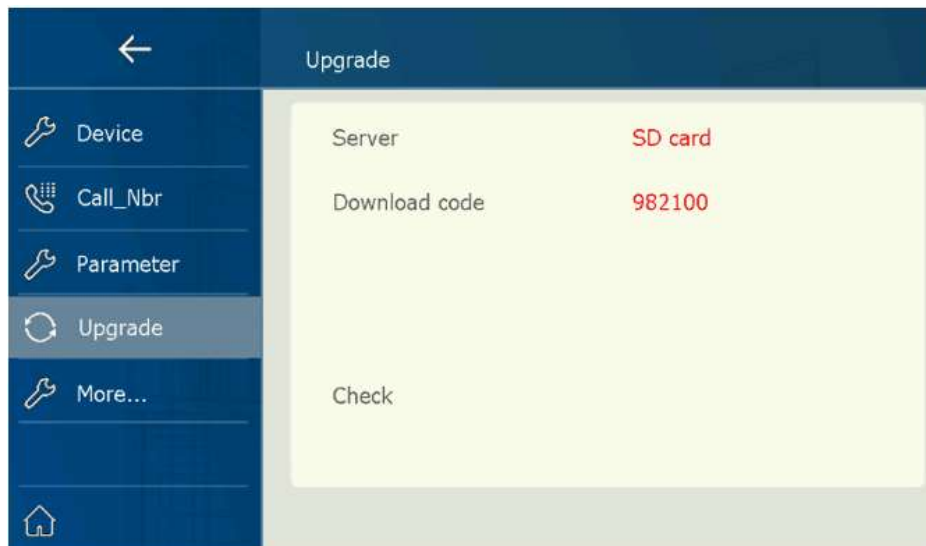
Note: There is no screen for DPC-IP81, so DPC-IP81 should be upgraded by “Onsite Tool” of IXmonitors.

IX monitor and DPC-IP81 should be in the same network.

Copy firmware to SD card and insert into DPC-IP81. Then use IX monitor to update DPC-IP81 remotely. Here we take DPM-IP71TMDv2 as example



On the DPM-IP71TMDv2 monitor, go to **Settings** → **Installer** → **Onsite tool** → input code **66666666** and touch ok → touch  → **Start search** → on the list, choose IX821 (DPC-IP81) → **Upgrade**, to enter below page.



Then configure as below (tap **Server** to choose “**SD card**”, tap “download code” to input **982100**)

Server	Download code
SD card	982100 (EN Standard)

Tap “Check” and once again confirm to update firmware for DPC-IP81. It will take around 2 minutes to finish this update.

At last, power on and reset the door station to factory default as below: short-circuit BOTH PORTS’ EB+ and EB- for 15 seconds at the same time, then DPC-IP81 will be set to factory default.

