

Player Operation User's Manual

Version 2.11.1

Table of Contents

1	General Introduction	4
2	Environment	5
3	Installation	6
4	Operation	9
4.1	Main Interface.....	9
4.2	Setting.....	10
4.2.1	Color Setting	10
4.2.2	Function Setting.....	11
4.3	Play File.....	11
4.4	AVI Convert	12
4.5	Clip	13
4.6	Multiple Display	14
4.7	Playback File from Forensic DVR	15
4.8	Watermark Detect.....	16
5	Un-installation	17

Welcome

Thank you for using our player!

This user's manual is designed to be a reference tool for the installation and operation of your system!

1 General Introduction

This player is a tool to play video file. It supports snapshot and can save a section of the video to a file.

It has the following features:

- Support various function: Play/Pause/Stop/Slow play/Fast play/Repeatedly play/Snapshot/Frame by frame play/Record and etc.
- You can drag the process bar to adjust play position.
- Support fast forward and fast backward.
- Support various languages.
- Support the file from forensic DVR and AVI convert.

2 Environment

Player has the following hardware requirement:

- Memory: Min 512M.
- HDD: Min 4G.
- OS: Microsoft windows XP\2000\2003\Me.

3 Installation

Please follow the steps listed below to complete installation.

Click General_Player_Eng_IS_V2.11.1.R.100521.exe file, system begins installation. See Figure 3-1.

Please click next button to continue.

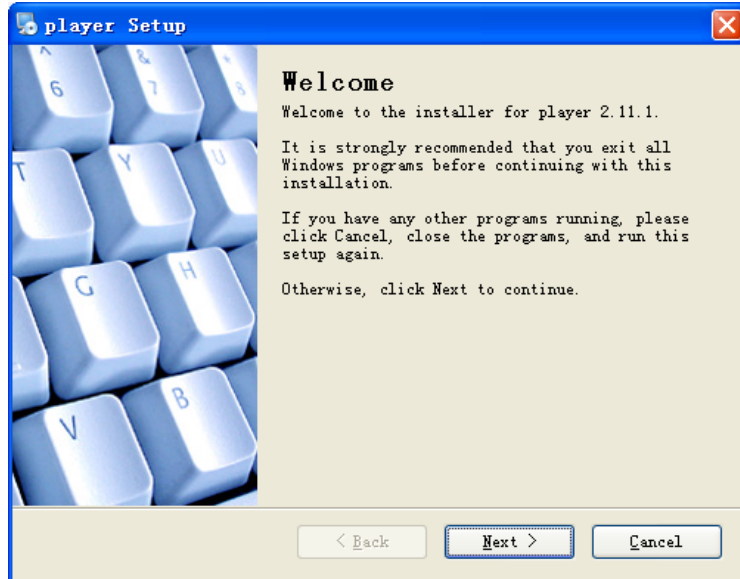


Figure 3-1

Now you can see an interface is shown as in Figure 3-2.

You can click browser to modify installation directory. Default path is C:\Program Files\Player.

Please click next button to continue.

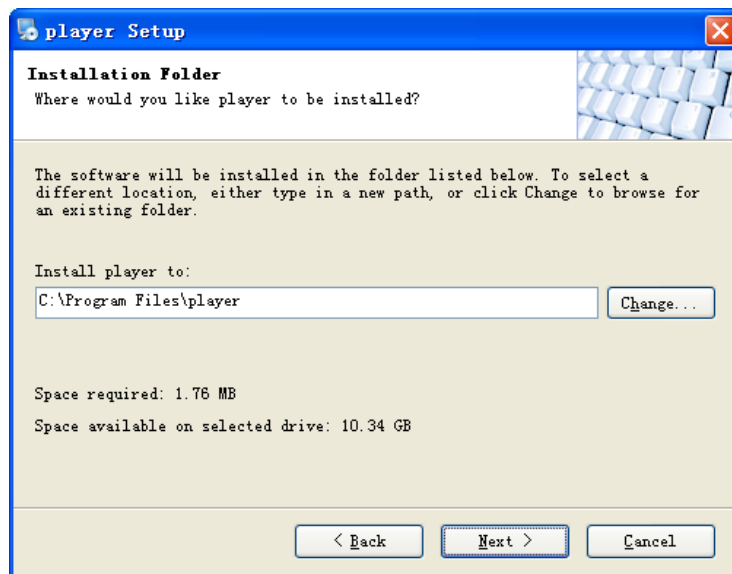


Figure 3-2

You can see the following interface. See Figure 3-3.

Please click next button to continue.

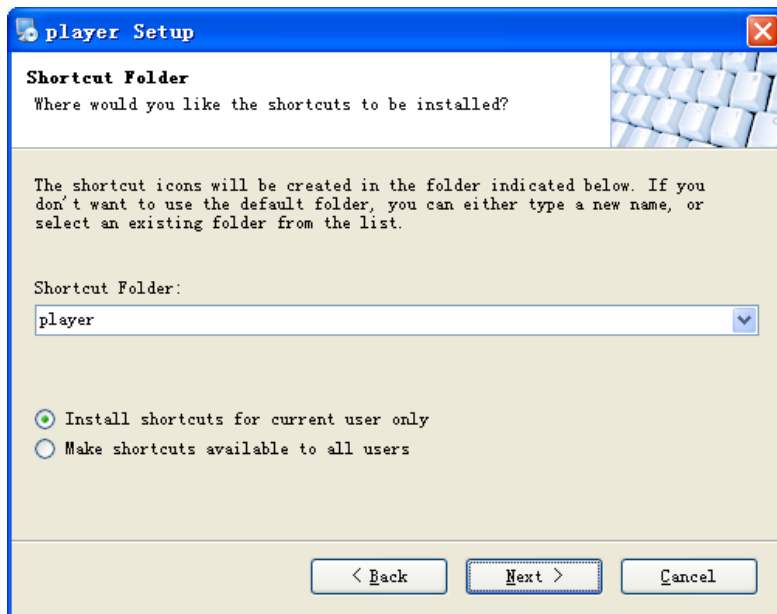


Figure 3-3

The interface is shown as in Figure 3-4.

Please read the installation information and then click next button to continue.

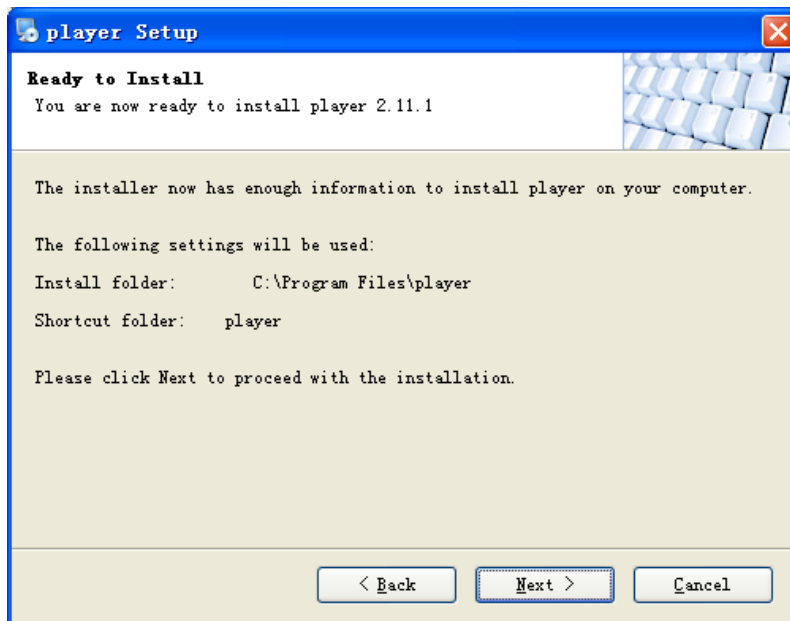


Figure 3-4

Please wait while system is in installation process. See Figure 3-5.

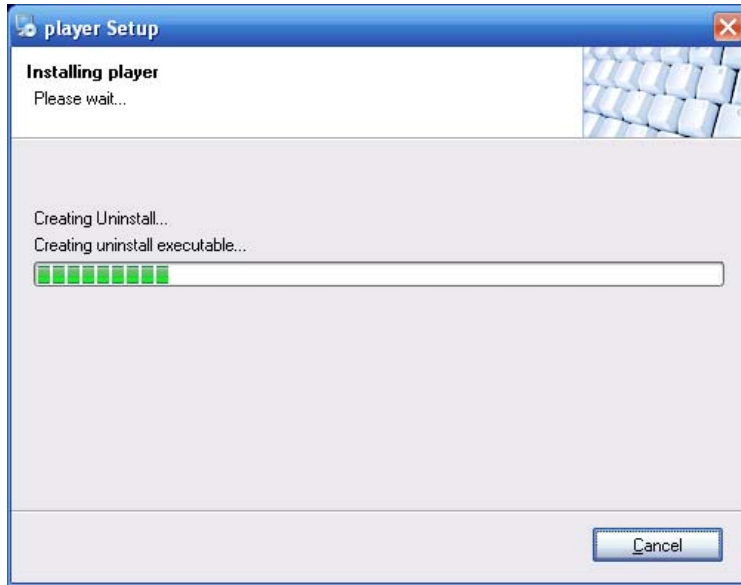


Figure 3-5

After installation, the interface is shown as below. See Figure 3-6.

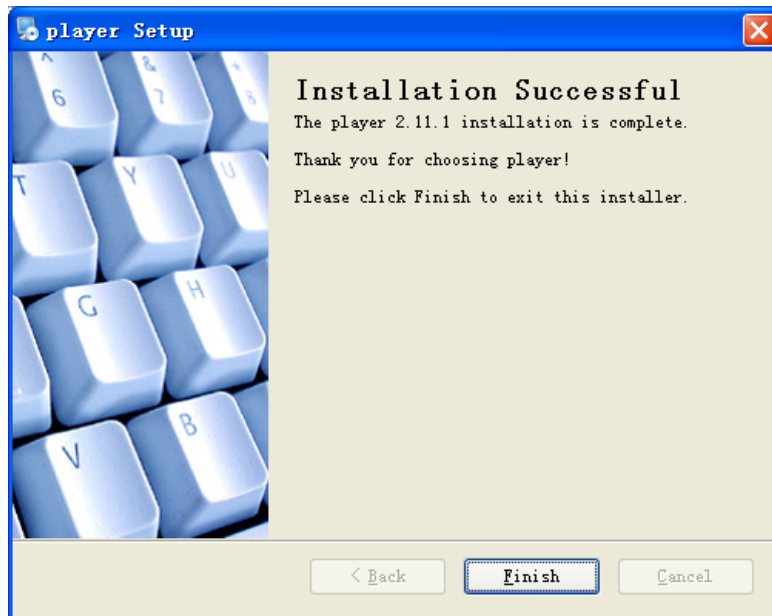


Figure 3-6

Please click finish button to complete the installation.

Note:


Program automatically creates shortcut menu in the Start and desktop.

4 Operation

4.1 Main Interface

You can click the icon  in the installation path or the desk to open the player interface.

In player interface, there are following items. See Figure 4-1.

SN	Name	Function
1	Play process bar	Here you can view current play process. You can left click your mouse and then drag it to control play process.
2	Play time	Display current play time and file total time.
3	AVI convert	You can use this function to convert .dav,.mp4,.264 file to .avi format. Supports convert multiple files at the same time.
4	Full screen	You can click it to switch between full screen and standard screen.
5	Play sequence	There are two modes for you to select: shuttle and repeat.
6	Language	You can click here to switch between various languages. Right now system only supports English interface.
7	Software version	Here you can view current player version information.
8	Menu	The setup menu including Open file/setting/control/multiple play/clip/help/about. 
9	Minimize	You can click to minimize player interface.
10	Close	You can click it to close player interface.
11	Open	You can click it to select corresponding file to play.
12	Play/Pause	Click it once, you can pause current play. Click it again system resume play.
13	Stop	Click it to stop current play.
14	Record	When you play the file, you can click it to record current video. You can click stop button to complete record. The recorded file is saved in your specified directory (Menu-Setting-recorded path).
15	Previous file	Click it, you can view previous video file.

16	Fast backward.	It includes:1/2x,1/4x,1/8x,1/16x
17	Backward play frame by frame	You can click it to realize frame by frame play. Click it once system backward plays one frame.
18	Play frame by frame	You can click it to realize frame by frame play. Click it once system plays one next frame.
19	Fast forward	It includes: 2x, 4x, 6x, 8x.
20	Next	Click it you can view the next video file.
21	Snapshot	When you play the video file, you can click it to save current video to the installation path as an image file. (Menu-Setting-recorded picture path).
22	Volume.	Here you can enable or disable sound.
23	Volume slide bar	You can click it to adjust volume.

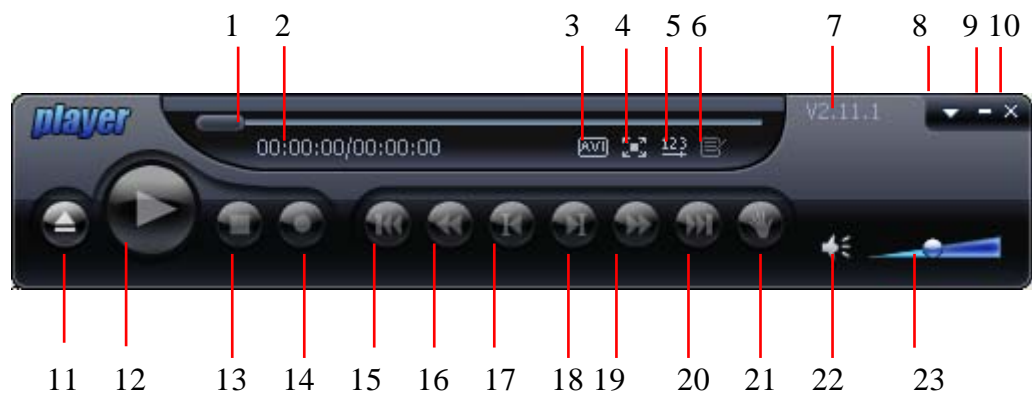


Figure 4-1

4.2 Setting

4.2.1 Color Setting

During the play process, click the Menu button (Button 8 in Figure 4-1) and then click setting item. The interface is shown as in Figure 4-2. Here you can drag the slide bar to adjust video bright, contrast, saturation and hue.

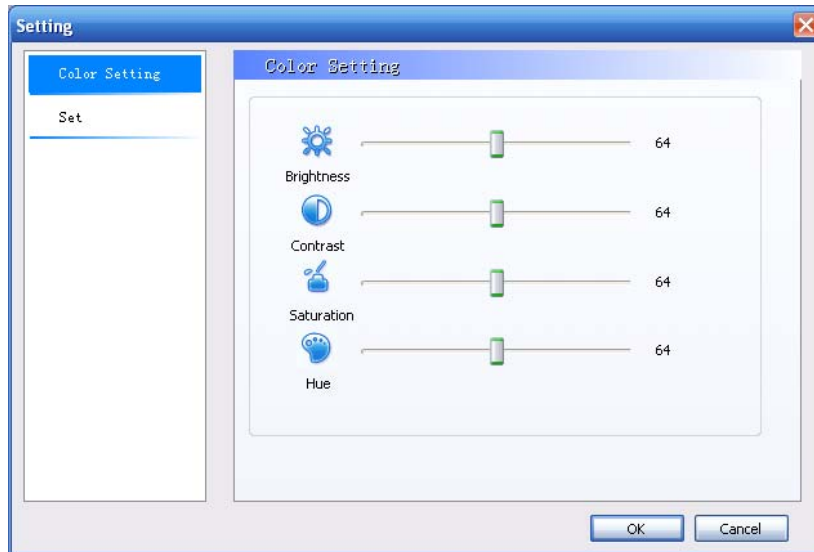


Figure 4-2

4.2.2 Function Setting

Select set button In Figure 4-2, the function setting interface is shown as in Figure 4-3. Here you can set associated file, set open option and select the path to save the snapshot image and recorded file.

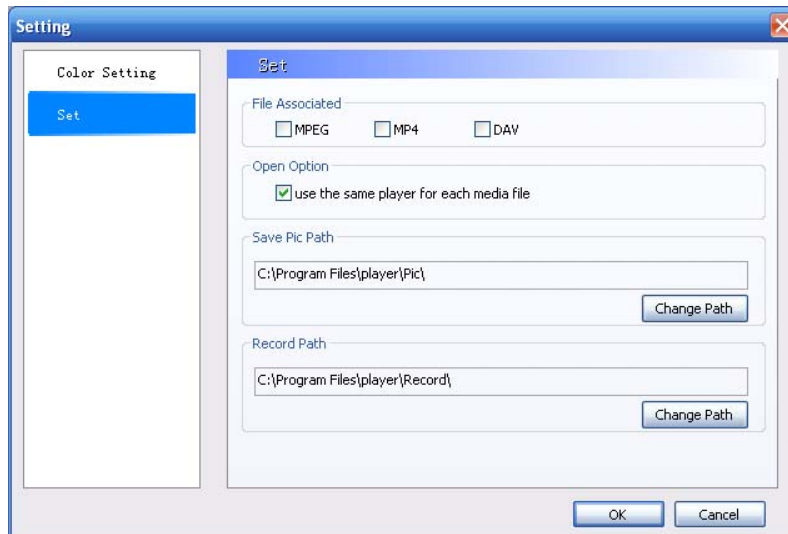


Figure 4-3

4.3 Play File

Click open button (Button 11 in Figure 4-1), you can see an interface is shown as in Figure 4-4.



Figure 4-4

Please select the file and then click open button to begin play.

Or you can just select the file and then drag it to the player to play.

Important

If it is your first time to use player. Double click player icon, you can see the following interface. See Figure 4-5.

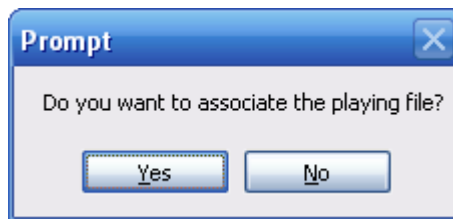


Figure 4-5

If you click yes, you can double click to open all the files with extension name .dav. mp4, mpeg.

4.4 AVI Convert

Click AVI convert button (Button 3 in Figure 4-1), you can click browser to select the file(s) to be converted. The interface is shown as below. See Figure 4-6.

Click convert button you can begin the operation.

Important

You can select multiple files at the same time.



Figure 4-6

4.5 Clip

During the play process, click Menu button (Button 8 in Figure 4-1) and then select clip item. Or you can right click the play window and then select the clip item (Figure 4-9). The interface is shown as below.

Here you can set to clip according to frame (Figure 4-7) or the time (Figure 4-8).

You can input begin time and end time or you can drag the play slide bar to set the start time and end time to set.

Click clip button, system pops up a dialogue box for you to input saved file name. Then system begins clipping.

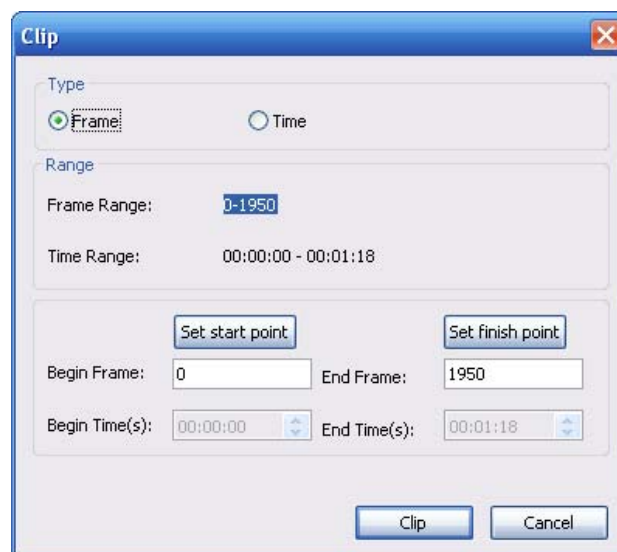


Figure 4-7

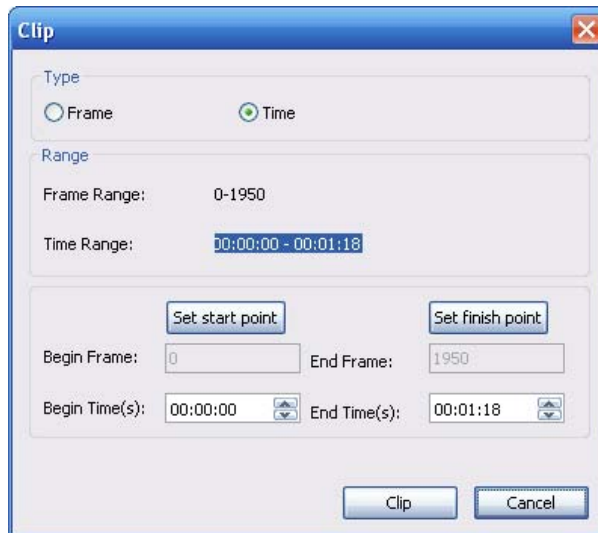


Figure 4-8

4.6 Multiple Display

During the play process, right click the play window, system pops up the following interface. See Figure 4-9.

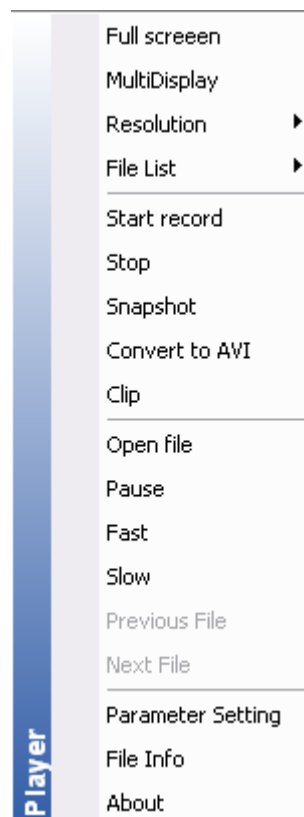



Figure 4-9

Select MultiDisplay item, you can see the current play becomes paused and your mouse

icon becomes .

Please drag the mouse in the screen to select a zone you want to play in detail. Then double click the specified zone, you can see system pops up a new window to play the zone. There are two play windows at the same time.

4.7 Playback File from Forensic DVR

When you play a file from the forensic DVR, system pops up the following dialogue box. See Figure 4-10.

For security reasons, you need to input the proper password to playback the interrogation file.

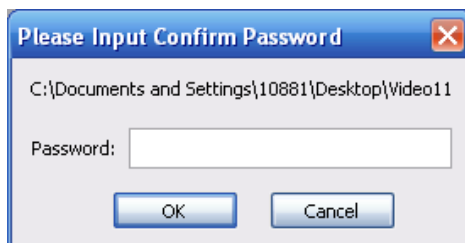


Figure 4-10

The playback interface is shown as below. See Figure 4-11.

You can view the corresponding information and view the detail interrogation content.

When there are data from two channels. There are two windows to playback at the same time. Click the window, these two windows can switch.

You can view the heading content on the right side.

If the file contains the overlay information, the information can display for five seconds and then disappear.

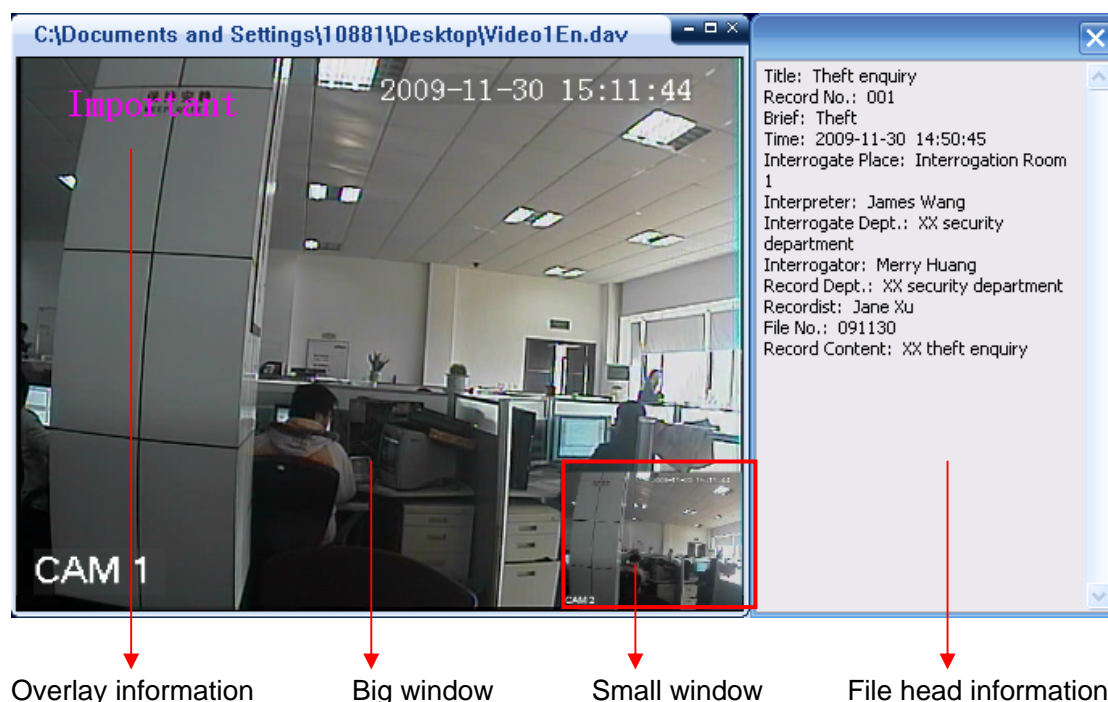


Figure 4-11

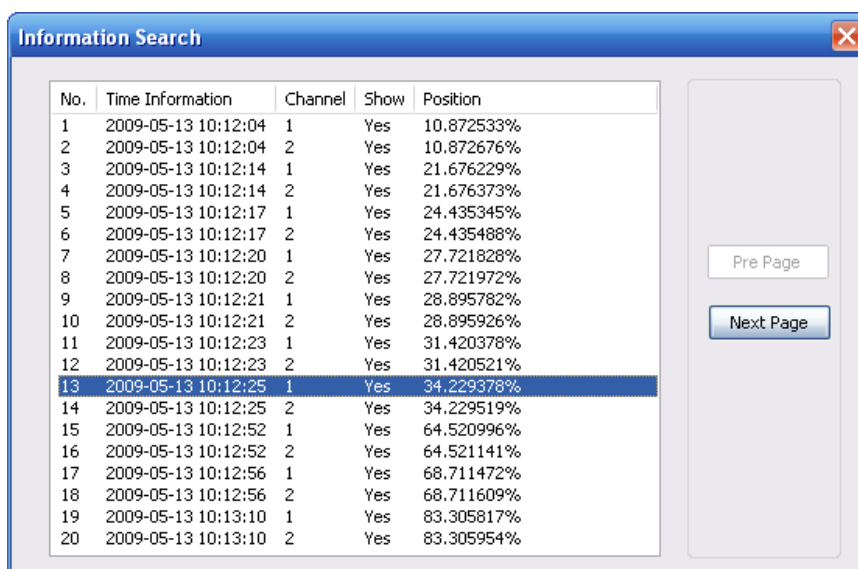
Right click mouse, you can see the shortcut menu has extra two options: information search and elisor information (You can refer to Figure 4-9).

When the heading window is closed, you can click elisor information to view again.

Click information search button, the interface is shown as below. See Figure 4-12.

Here you can view the mark information list during the interrogation. You can conveniently know the title overlay time and channel.

Click one item; the player can go to the corresponding time and then play. The selected video will be displayed in the larger window by default.



No.	Time Information	Channel	Show	Position
1	2009-05-13 10:12:04	1	Yes	10.872533%
2	2009-05-13 10:12:04	2	Yes	10.872676%
3	2009-05-13 10:12:14	1	Yes	21.676229%
4	2009-05-13 10:12:14	2	Yes	21.676373%
5	2009-05-13 10:12:17	1	Yes	24.435345%
6	2009-05-13 10:12:17	2	Yes	24.435488%
7	2009-05-13 10:12:20	1	Yes	27.721828%
8	2009-05-13 10:12:20	2	Yes	27.721972%
9	2009-05-13 10:12:21	1	Yes	28.895782%
10	2009-05-13 10:12:21	2	Yes	28.895926%
11	2009-05-13 10:12:23	1	Yes	31.420378%
12	2009-05-13 10:12:23	2	Yes	31.420521%
13	2009-05-13 10:12:25	1	Yes	34.229378%
14	2009-05-13 10:12:25	2	Yes	34.229519%
15	2009-05-13 10:12:52	1	Yes	64.520996%
16	2009-05-13 10:12:52	2	Yes	64.521141%
17	2009-05-13 10:12:56	1	Yes	68.711472%
18	2009-05-13 10:12:56	2	Yes	68.711609%
19	2009-05-13 10:13:10	1	Yes	83.305817%
20	2009-05-13 10:13:10	2	Yes	83.305954%

Figure 4-12

4.8 Watermark Detect

This series player supports watermark detection.

Once you play the video watermark has been modified, you can see a dialogue box shown as in Figure 4-13.

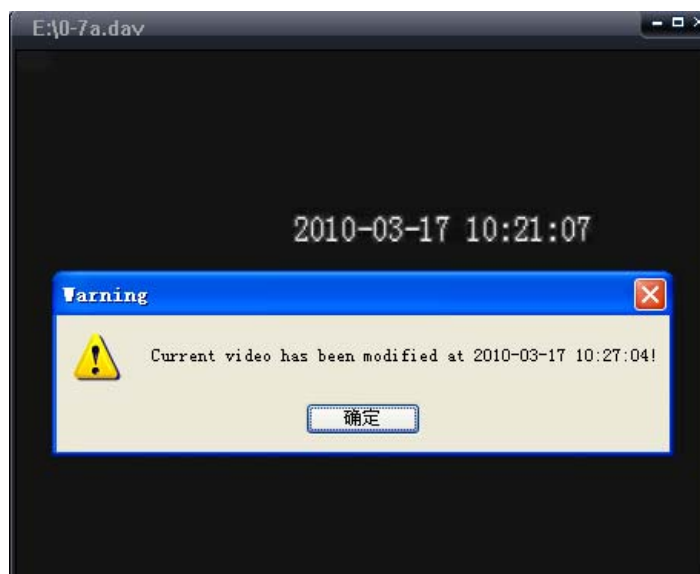



Figure 4-13

5 Un-installation

From the installation path, or from the Start->All program, you can find the un-installation button  Uninstall player . Double click it you can see the following dialogue box. See Figure 5-1.

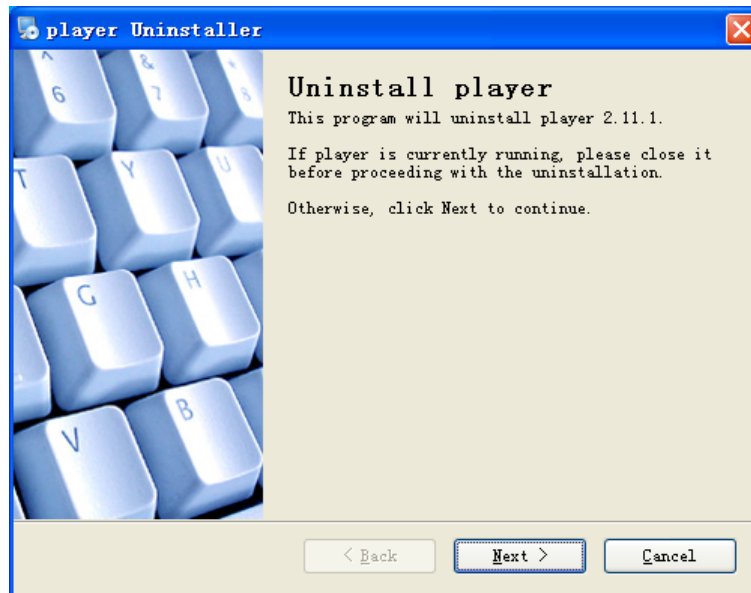


Figure 5-1

Click next button, you can see system begins un-installation.
After un-installation, you can see an interface is shown as below. See Figure 5-2.

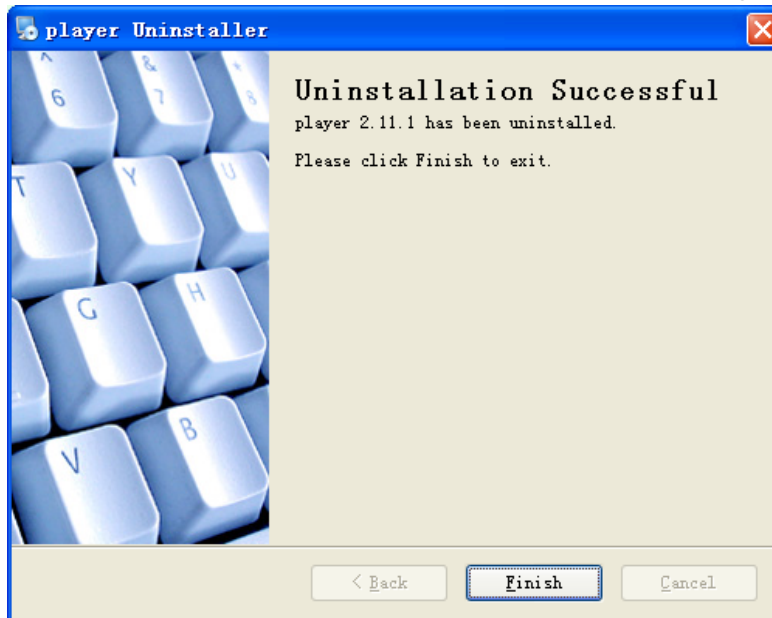


Figure 5-2

Click finish button, you can complete the un-installation.

Note

- **This manual is for reference only. Slight difference may be found in the user interface.**
- **All the designs and software here are subject to change without prior written notice.**
- **Please visit our website or contact your local service engineer for more information.**