

# PC2MIEX-1122

## User manual

### XtendLan

#### IMPORTANT SAFETY INSTRUCTIONS

1. Make sure all the devices are disconnected via software before power off.
2. Some hardware-acceleration player are not supported when the product is playing big video files.
3. When USB port is connected,please don't plug or unplug the mouse, keyboard or other storage devices until the control software find the devices.
4. This product only works on the same Local Area Network
5. This product doesn't support simultaneous output of HDMI and VGA, please select either one of them before power on the product.

#### 1. Package Contents

PC to HDMI over Lan device x1 pc  
CD Driver x1pc  
User Manual x1 pc  
Power Adapter x1 pc

#### 2. Installation Requirements

- 2.1 HDTV/SDTV with HDMI input,VGA monitor
- 2.2 PC with WIFI or 100M/1000M Network card
- 2.3 System support  
Windows XP Windows 7

#### 3. Installation Steps

##### 3.1 Install Driver: Double-click Driver.exe



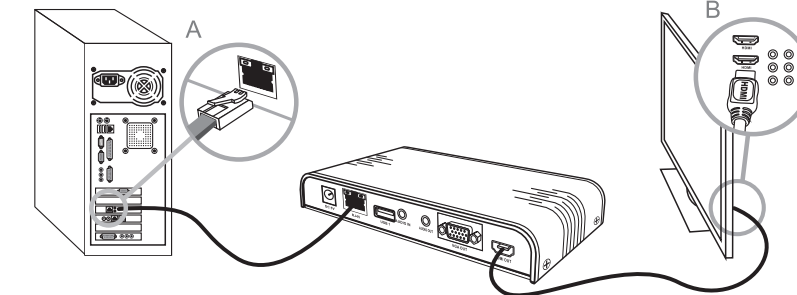
##### 3.2 Install the Control software: Double-click Software.exe



#### 4. Connection Image:

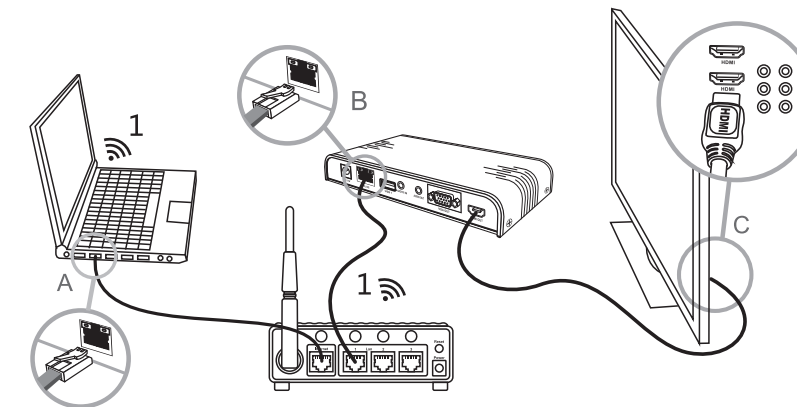
##### 4.1 Direct connection:

- A: Connect Converter to Computer with RJ45 Network cable  
B: Connect TV or VGA monitor to the converter with HDMI cable or VGA cable .after connecting all power adapters ,the converter start to work!



##### 4.2 Connected by Router :

- A: Connect router to computer with RJ45 Network cable or WIFI  
B: Connect router to the converter with RJ45 Network cable  
C: Choose output signal,connect HDTV or VGA monitor to the converter with HDMI cable or VGA cable. Power on the product,the converter start to work!



#### 5. How to use?

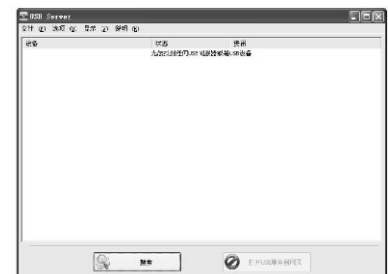
##### 5.1 Double-click USB Server file:

##### 5.2 Select language as following:



##### 5.3 Connect the device

##### 5.3.1 On first use, click search and then the software will search the converter automatically.



##### 5.3.2 System will display video converter searched out



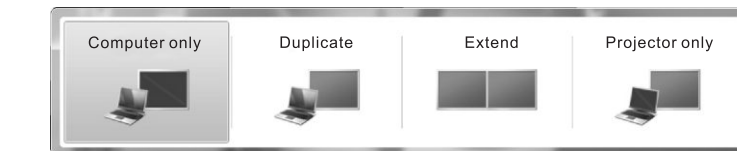
Click A(device to be connected)and then click B(connect the device), the converter will be automatically connected.(system will set up the driver automatically for the first connection) connect the required devices one by one.(It is normal if the display is black for seconds in this process.)

##### 5.3.3 Open Control Panel//All of the control panel/Display/Screen Resolution, the HDMI output resolution can be set. Take Win7 as example.



- A. Select the display that needs to adapt. 1 Display is input computer and 2 Display is output device by default.  
B. Set up the resolution  
C. Set up the display direction  
D. Set up the display mode

Short-cut Function: Press "Win+P" to see the following images.



From left to right,Computer only,Duplicate,Extend and Projector only. You can easily switch display mode.

**Note:** Short-cut function can not be applied by some computers due to compatability.

##### 5.3. 4 Disconnect the converter

- A. Select the device  
B. Click the button to disconnect the chose device.

**Note:** If the software refuses to disconnect, please power off the converter. Make sure to store all files before power off.

#### 6. Technical specifications

Power Supply	DC 5V/1000mA
Resolution	Up to1920*1080(widescreen)
Input1	USB x 2
Input2	3.5mm Stereo Audio
Output1	HDMI
Output2	VGA+3.5mm Stereo Audio
System Support	Windows 2000/XP/VISTA/7
Dimensions	160*70*25.5mm

#### 7. FAQ

Q: No video output

A: Please make sure that all cables are well connected.If still no video,please disconnect the connectivity in software and re-connect or re-install the driver.

Q: No sound or mouse no response

A: The connectivity will be always disturbed by unstable network.In this case, please disconnect the connection of audio and mouse in soft ware.

Q: Display will show "Be sure to disconnect the device and exit ? " when USB server is closed.

A: Power off the converter or re-boot the computer

Q: Connect VGA and HDMI output simultaneously,but VGA no display.

A: Please select VGA or HDMI output before the converter is powered on.

#### Disclaimer

The product name and brand name may be registered trademark of related manufacturers.TM and® may be omitted on the user manual.The pictures on the user manual are just for reference,and there may be some slight difference with the real products.

We reserve the right to make changes without further notice to a product or system described herein to improve reliability,function or design.