

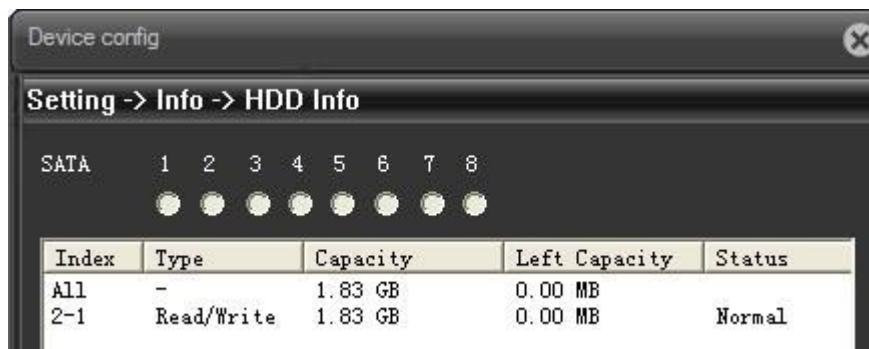
TF Card

(For TF Card ip camera only)

1. Install TF card

For primary use, firstly please install TF card, one TF card, to keep normal function, TF card is required with minimum 4G and maximum 32G.

Note:The device will power off automatically when plug or pull out the TF memory card.



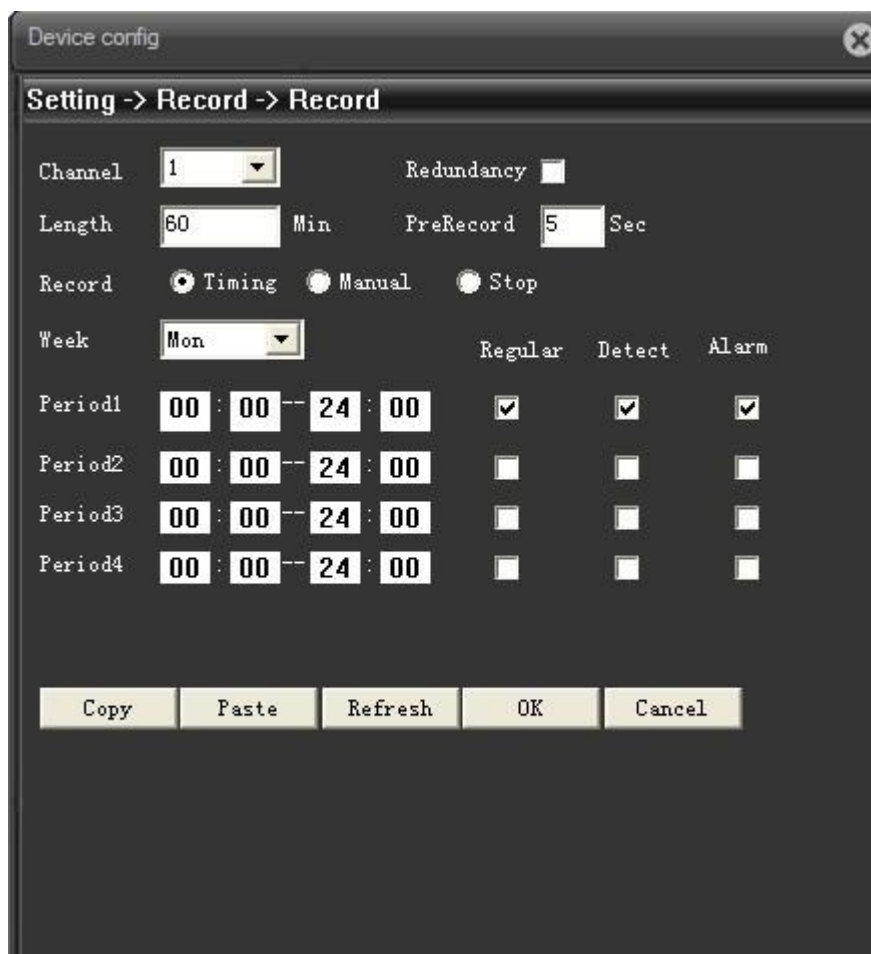
Display the hard disk state: type, overall capability, residual capability, the recording time and so on.

Tips : ○ means that the hard disk is normal. X means that the hard disk is broken-down.- means that there is no hard disk. If the user need to change the damaged hard disk, you must shut down the Camera and take up all the damaged hard disks,then install a new one.



Record setting

Device should install TF card to realize this function.



【Length】 to set the length of each recording file between 1-120min, default is 60min;

【PreRecord】 to record 1-30s before motion happens (time length may slight different due to bit rate)

【Record control】 set recode type: timing, manual & stop

Timing: Record according to the set video type (regular, detect and alarm)and time period.

Manual: Click the button and the according channel is recording no matter the channel in any state;

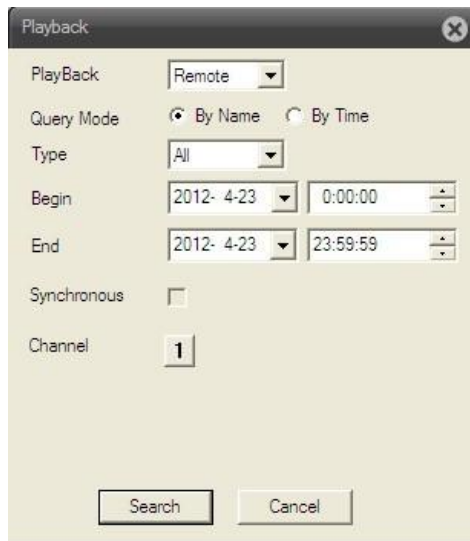
Stop: Click the stop button and the according channel stops recording no matter the channel in any state.

4. Playback :

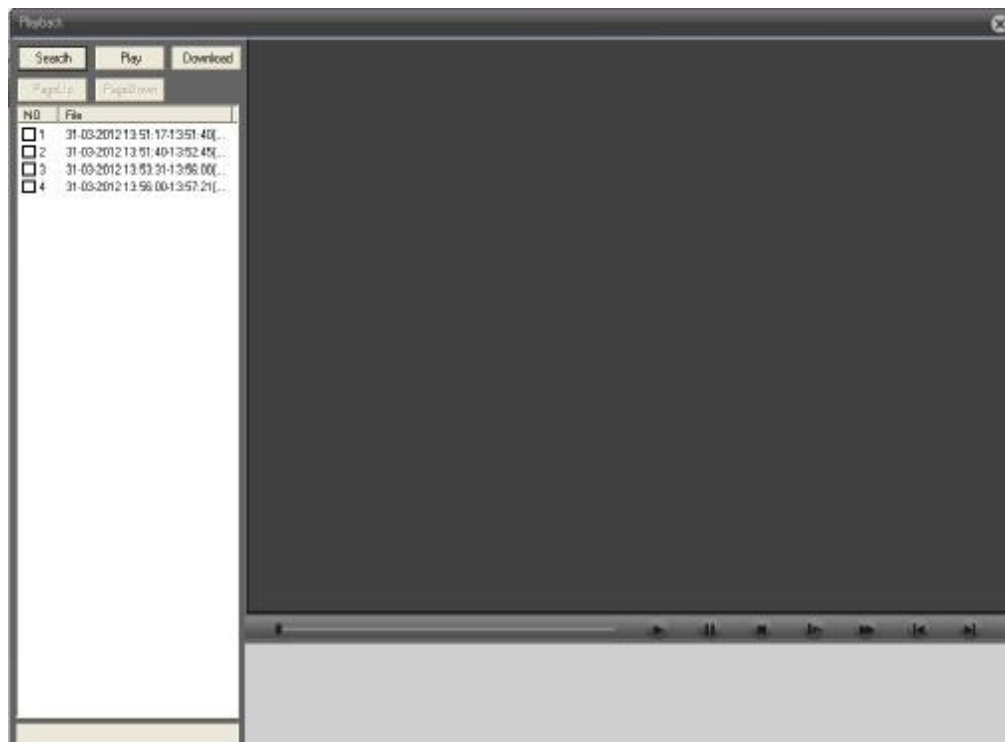
To play the video file in TF card, can click **Playback** at upper left side on monitor page, to enter video playback page.

Remark: Device normal playback, the TF card that used for video storage should be set as read/write or read only (please refer to HDD manage).








Playback : Remote



1. Play



【Playback control button】 see detail in below chart;

Button	Function	Button	Function
	Play		Pause
	Slow-play		Fast-play
	Previous frame		Next frame
	Stop		

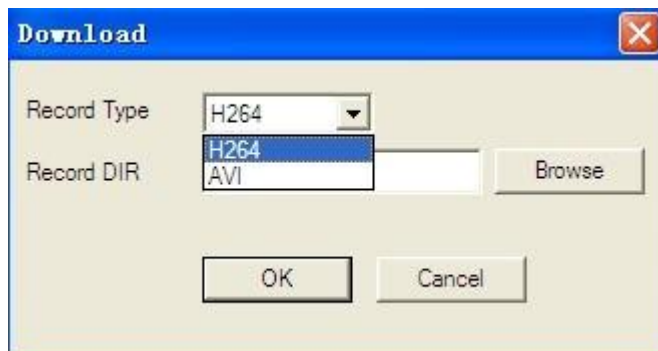
Remark: Playback by frame should under the status of playback pause.

【Operate tips】 to show the button function when cursor point it

Special feature:

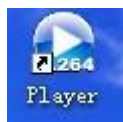
Partial enlargement: **when single view full screen playback, can use right button to choose any size of area from the image, click left button in the chosen area, can enlarge this area to playback, double click left button will exit.**

2. Download :



H264 or AVI :

“H.264 PLAYER” and “Video Conver” in CD.



“H.264 PLAYER” :

“Video Conver” : Video conver from h264 to avi

5. TF Card full :



choose **Stop record** : means when the TF card is full, stop recording.

Choose **Over write** :means when the TF card is full, keep on recording, but the most previous file will be replaced.