

VSPlayer

User Manual

V6.0.0.4

2010-05-21

Thank you for purchasing our products. If there are any questions or requirements, please feel free to contact us.

This manual is applicable to VSPlayer application. Please read this user manual carefully to ensure that you can use the product correctly and safely. It may contain several technically incorrect places or printing errors, and the content is subject to change without notice. The updates will be added into the new version of this manual. We will readily improve or update the product or procedure described in the manual, and the contents of this manual are subject to change without notice.



Product Features

- Support Windows 2000/XP, Windows Server 2003, Windows Vista and Windows 7 system.
- Support all the video files encoded by our products, including:
 - DS-9000/9100, 8100/7100, 8000/7000, 7600, 7300, 7200 series Network DVR;
 - DS-6100/6000 series network DVS;
 - DS-4200/4000 series video/audio compression card;
 - Network camera and network speed dome.
- The player supports multiple video standard, include private H.264, standard H.264, standard MPEG4.
- Support playback from file list.
- Support various playback control and parameter adjusting modes.
- Support multiple-display output.



Index

1	Operation Guide	4
2	Menu Items	6
3	Function Description	7
3.1	File	7
3.1.1	Open File	7
3.1.2	Close File	7
3.1.3	Exit	8
3.2	View	8
3.2.1	Full Screen Display	8
3.2.2	Zooming	8
3.2.3	Information	8
3.2.4	Zoom	9
3.2.5	Watermark	9
3.2.6	Display Device	10
3.2.7	Top Display	10
3.3	Control	11
3.3.1	Playback Control Tab and Control Bar	11
3.3.2	Locate	12
3.3.3	Video Control	12
3.4	Option	13
3.4.1	Set Snapshot Format and Saving Path	13
3.4.2	DeFlash	13
3.4.3	High Image Quality	14
3.4.4	Throw B Frame	14
3.4.5	Display Mode	14
3.4.6	Timer Select	14
3.4.7	Reset Buffer	15
3.5	Help	15
3.5.1	Display Operation Guide	15
3.5.2	Display Version Information	16

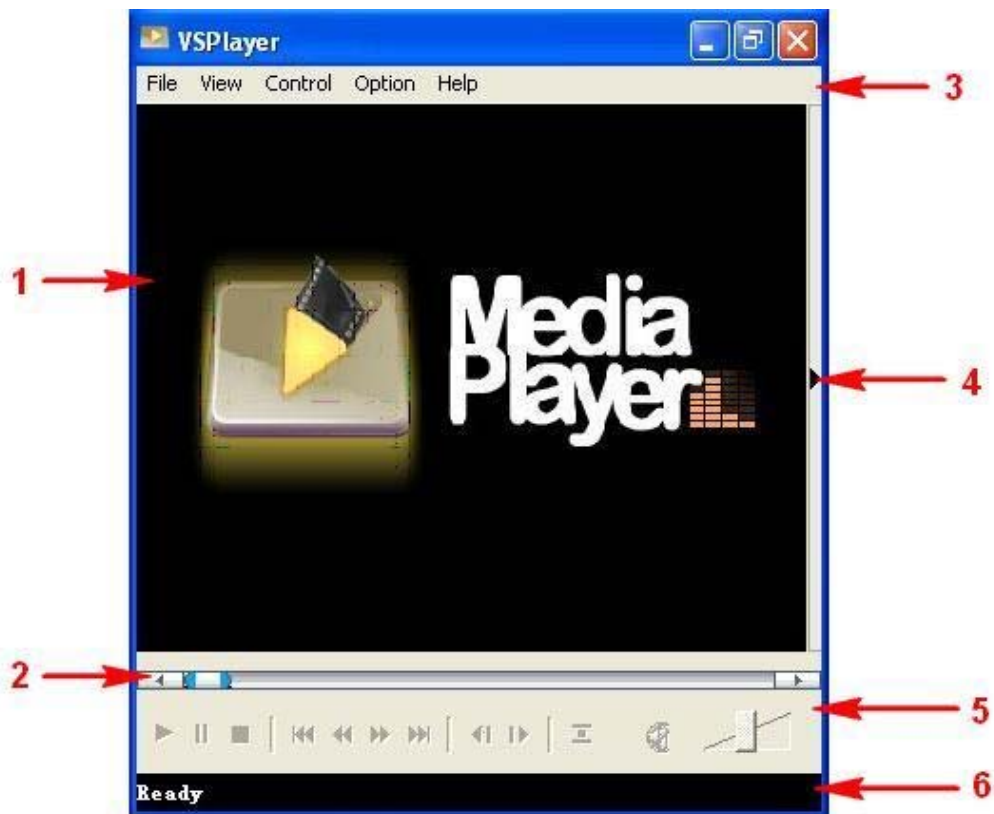


1 Operation Guide

The VSPlayer consists of VSPlayer_EN.exe and PlayCtrl.dll, between which VSPlayer is the executable program, while PlayCtrl is application extension.



Double click on VSPlayer icon and start the player program. The main interface of VSPlayer will be displayed as below.







	Name	Description
1	Playback Area	Displays playback image
2	Progress Bar	Indicates playback process
3	Task Bar	Enable player options
4	Playback List Option	Enable/Disable playback file list
5	Control bar	Playback Start/Stop, Speed and Volume control, etc
6	Playback Info	Displays playback time, frame number, etc

The playback file list will be displayed as below after clicking Playback File List button.





 Add file  Delete file  Clear file list items  Select playback mode from Continuous playback, Single playback and Loop playback.



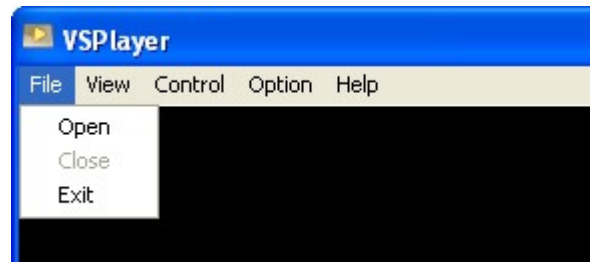
2 Menu Items

Tab	Menu Option	Secondary Menu Option
File (Alt+F)	Open (Ctrl+O)	
	Close (Ctrl+C)	
	Exit	
View (Alt+V)	FullScreen (F2)	
	Zoom ▶	50% / 100% / 200%
	Information	
	MultiDisplay	
	Watermark	
	Display Device ▶	Display Device (Graphic Adapter) Model
	Top Display ▶	Never/ Always
Control (Alt+C)	Play / Pause (Space)	
	Stop	
	Step Forward (→)	
	Step Backward (←)	
	Goto Start (Ctrl+←)	
	Goto End (Ctrl+→)	
	Locate (Ctrl+L)	locate by frame or by time
	Video Control	
Option (Alt+P)	Set Pic Type ▶	BMP/JPEG
	Set Cap Pic Path	
	Deflash	
	High Image Quality	
	Throw B Frame ▶	Don't throw/Throw 1 B-Frame / Throw 2 B-Frame
	Display Type ▶	Normal/Quarter
	Select Timer ▶	Timer_1/ Timer_2
	Reset Buf	
Help (Alt+H)	Hot Keys	Displays hot key list
	About	Displays VSPlayer version information



3 Function Description

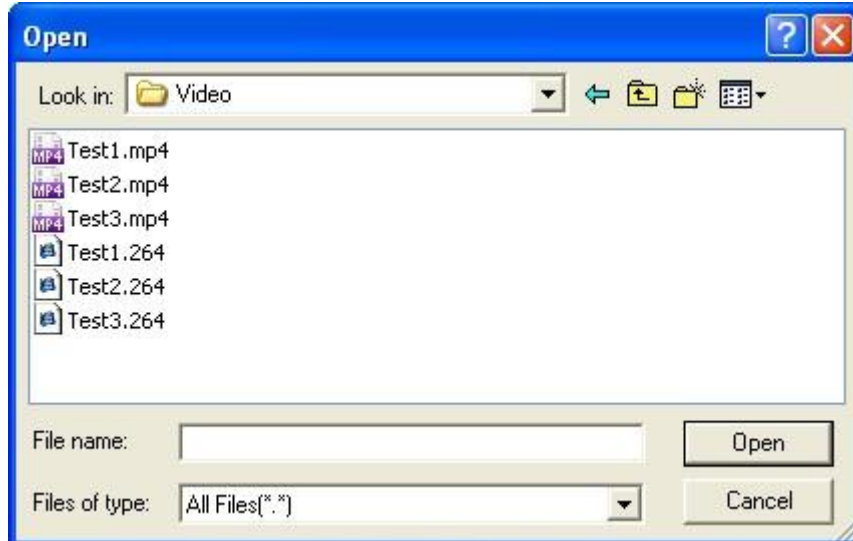
3.1 File



3.1.1 Open File

Operation

- a. Select File->Open
- b. Select the video file from the popup Open File dialog box.
- c. Click **[Open]** and the file will be playback in the playback area of software main interface.



3.1.2 Close File

Operation:

- Select File->Close and close the current playback file.



3.1.3 Exit

Operation:

Select File->Exit and exit from the VSPlayer application.

3.2 View



3.2.1 Full Screen Display

Operations:

Select View->FullScreen or double click on the playback image.

3.2.2 Zooming

Operation:

Select View->Zoom and choose among 50%, 100% and 200% zooming, or drag the VSPlayer main interface to adjust the playback image size.

3.2.3 Information

Operation:

Select View-> Information, and the video information will be displayed as the list below.

Video Adapter Numbers: Total Display device number in the system.

Display Device: name of display device.

Driver: device driver

IS Overlay Surface: The VSPlayer will not display in overlay mode as Windows Vista default color scheme will occupy overlay surface



Max Display Buffer(frame): Frame number in display buffer
 Volume
 Image Quality
 Timer: TIMER_1 / TIMER_2
 Video Render Frames
 Audio Render Frames
 Video Source Size (for Stream Input mode)
 Audio Source Size (for Stream Input mode)

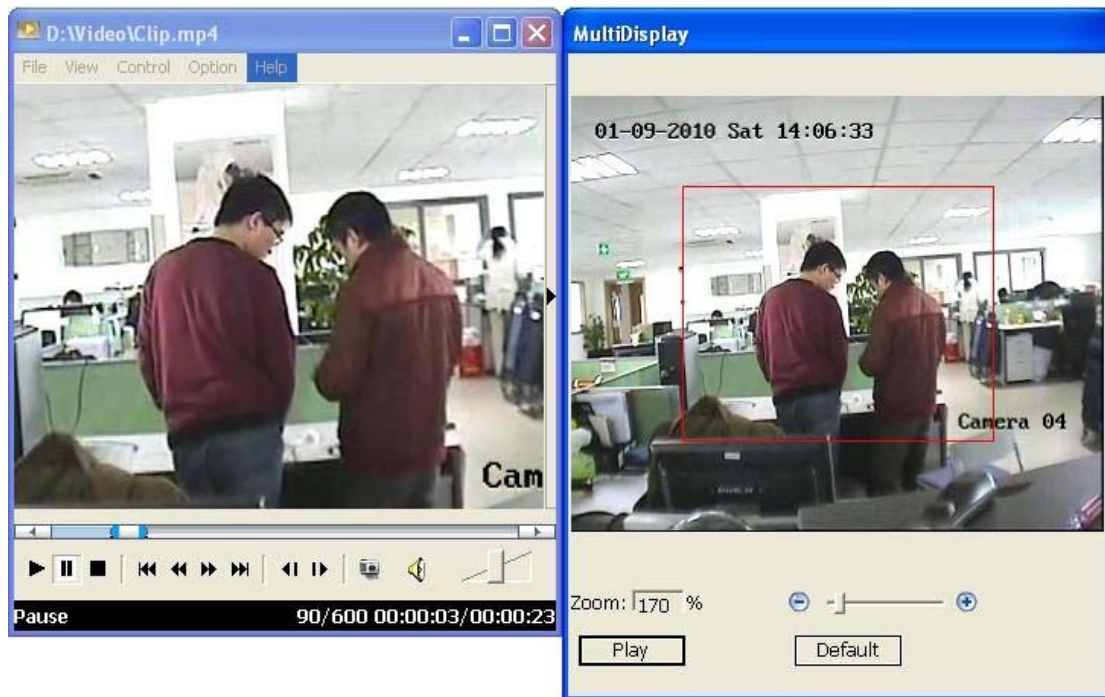
3.2.4 Zoom



Zoom function is for enlarge certain part of the video.

Operation:

Select View->MultiDisplay, and zooming area selecting interface will popup as below.

Select View-> Cancel MultiDisplay to exit from zooming interface



- Click **[Set/Play]** and select zooming area, or click **[Default]** to select the whole video scene as display area.
- Drag the Zoom control bar or click icons   to adjust the zoom portion.
- Click in the center of the red rectangle and adjust the zoom region position. Users can preview the zooming effects in VSPlayer main interface during adjusting.
- Click **[Set/Play]** after zoom factor and region setting, and then the VSPlayer will start to playback the video image of zooming region.

3.2.5 Watermark

Operation:



Select View->Watermark, and the watermark info message box will popup, and displays the encoded watermark information.



3.2.6 Display Device

Operation:

Select View->Display Device to view the display device list in the system.

3.2.7 Top Display

Operation:

Select View->TopDisplay and select if the VSPlayer should always displayed on top of other application windows.



3.3 Control



3.3.1 Playback Control Tab and Control Bar

The playback Control tab and control bar are with similar functions.



Play Pause Stop

Goto Start Goto End

Slow Forward, the playback speed will low down to 1/2 of previous speed by each time clicking, and it supports up to 4 times of continuous clicking, which is, supports (1/2)X, (1/4)X, (1/8)X, (1/16)X speed.

Fast forward, the playback speed will double by each time clicking, and it supports up to 4 times of continuous clicking, which is, supports 2X, 4X, 8X, 16X speed.

Step Backward Step Forward

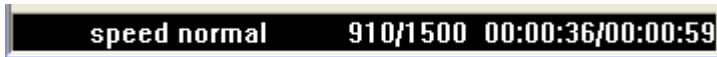
Open Sound Mute Volume Adjust

Snapshot



Drag the progress bar to adjust the playback position.





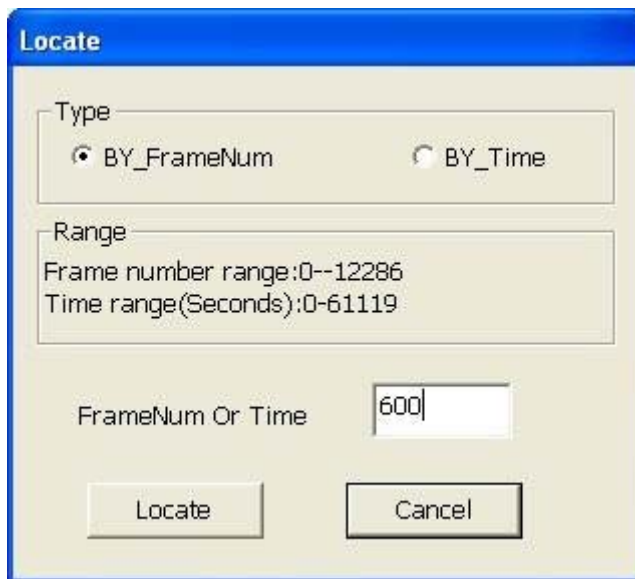
Playback progress indication bar displays the total frame number, time duration, current frame number, time position and playback speed, etc.

3.3.2 Locate

Locate to certain frame number or time position (second).

Operation:

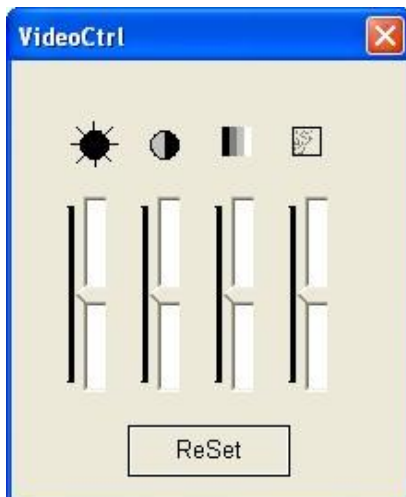
Select Control->Locate and select locate by frame or locate by time. Input relative frame number or time in [FrameNum or Time], and click **[Locate]** to reset the playback start position.



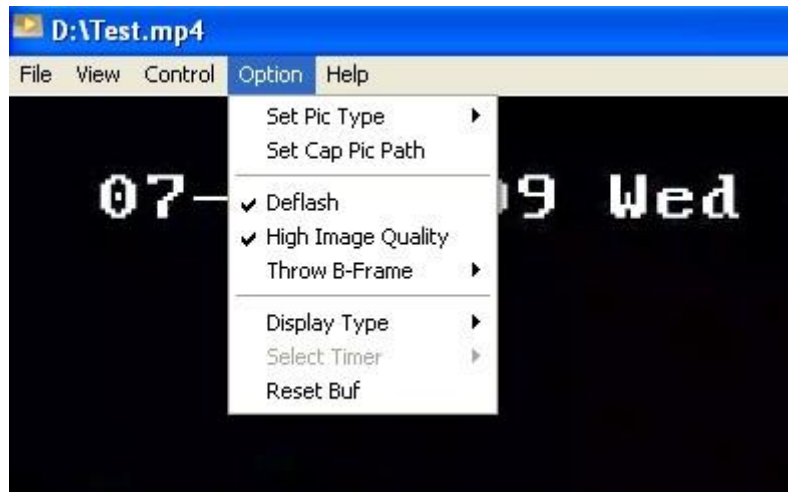
3.3.3 Video Control

Operation:

Select Control->Video Control, and adjust/reset video brightness/contrast/hue/saturation in the popup menu.



3.4 Option



3.4.1 Set Snapshot Format and Saving Path

Operation:

Select Option->Set Pic Type to select BMP or JPEG format for the snapshot pictures.

Select Option->Set Cap Pic Path to select snapshot saving path in the popup dialog box as below:



3.4.2 DeFlash

DeFlash:



If there is regional noise signal in still image, there will be flicker (or Blink/ Flash) on the display image. The DeFlash option is suggested to be enabled under such circumstance to depress the noise while also eliminate the flashing problem.

Operation:

Select Option->DeFlash

3.4.3 High Image Quality

High Image Quality:

The Image viewing effect will be better if user selects this viewing mode, yet it will bring up CPU usage at the same time. If there are several player applications on running at the same time, it is suggested to disable High Image Quality option for lower CPU usage, and enable this option if a certain channel is zoomed for higher image quality.

Operation:

Select Option(P)->High Image Quality

3.4.4 Throw B Frame

Throw B frames before decoding can reduce CPU usage, and it is suggested to be enabled for fast forward playing mode or if CPU usage is too high. If there is no B frame in the video data, this option will not take effect.

Operation:

Select Option -> Throw B Frame, users can select do not throw B Frame, Throw 1 B Frame or Throw 2 B Frames.

3.4.5 Display Mode

Set display mode. Set "Quarter" display mode can reduce display adapter load and support more channel display, yet it will affect the image quality at the same time. And thus it is suggested to set "Quarter" for smaller preview area while "Normal" display more for 1:1 and full screen playback.

Operation:

Select Option-> Display Type, and users can select normal display mode or quarter display mode (only quarter of the total decoded data is sent to the display adapter).

3.4.6 Timer Select

Operation:

Select Option->Select Timer, and choose betweenTimer_2 or Timer_1

Timer_1 is with higher precision than Timer_2, yet each process can support up to 16 Timer_1. Ch 0~15 will use Timer_1 by default, and the rest will be using Timer_2.

Notice: Timer Selection should be done before open file.



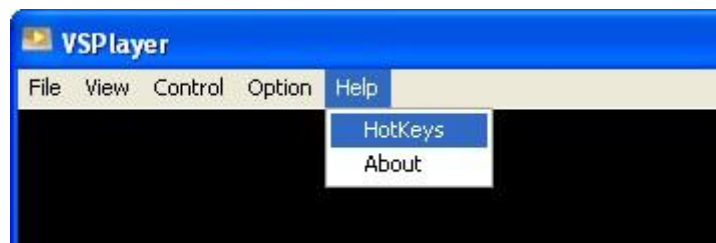
3.4.7 Reset Buffer

Operation:

Select Option->Reset Buf

Reset the buffer for decoding and playback.

3.5 Help



3.5.1 Display Operation Guide

Display Hot Keys

Operation:

Select Help->HotKeys and the operation hot keys will be displayed as below.



3.5.2 Display Version Information

Operation:

Select Help-> About and the VSPlayer version information will be displayed.

