

# **Quick Configuration Tool User's Manual**

# Table of Contents

1	Overview.....	4
1.1	Login Interface.....	4
1.2	Login Web.....	4
1.3	Refresh/Login/Logout.....	5
2	Main Interface.....	7
2.1	Network Parameter.....	7
2.2	PPPoE.....	7
2.3	System Information.....	8
2.4	System Upgrade.....	9
3	FAQ.....	12

# Welcome

Thank you for using our software!

# 1 Overview

Quick configuration tool can search current IP address, modify IP address. At the same time, you can use it to upgrade the device.

Please note the tool only applies to the IP addresses in the same segment.

## 1.1 Login Interface

Quick configuration tool search interface is shown as below See Figure 1-1.

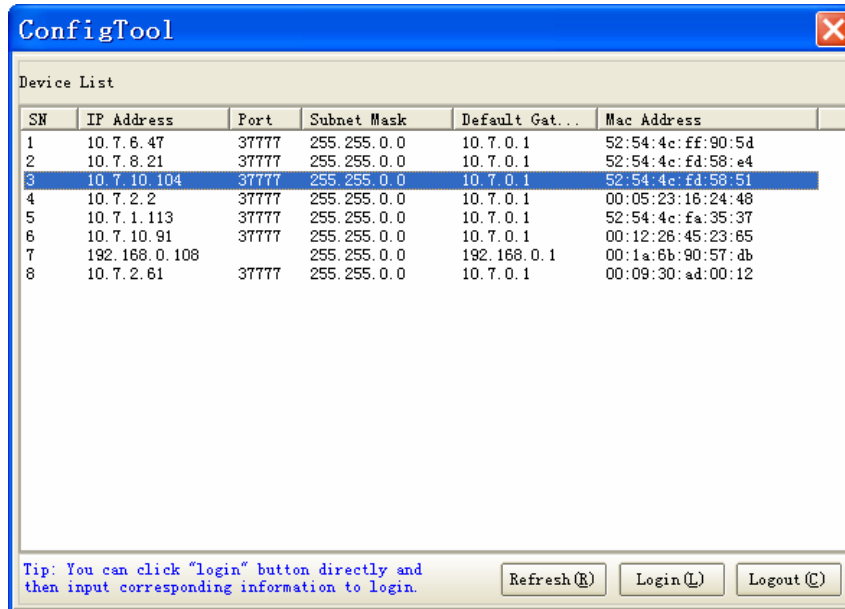


Figure 1-1

Please refer to the following sheet for detail information.

1	Device serial number
2	Device IP address
3	Device port number
4	Device subnet mask
5	Device default gateway
6	Device Mac address
7	Refresh button
8	Login button
9	Logout button

## 1.2 Login Web

You can select an IP address in the Figure 1-1 and then right click mouse to select open device Web item. See Figure 1-2. Then you can login the corresponding Web interface.

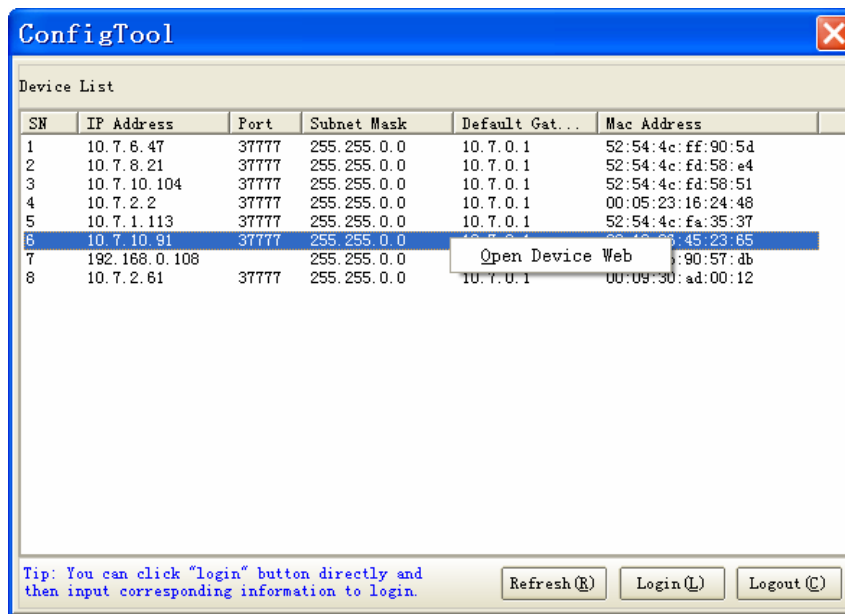


Figure 1-2

Please refer to the following sheet for detail information.

Function	Note
Refresh	Search the device IP and its corresponding information again.
Login	Login the corresponding configuration main interface.
Logout	Exit quick configuration tool.

Web login interface is shown as below. See Figure 1-3.

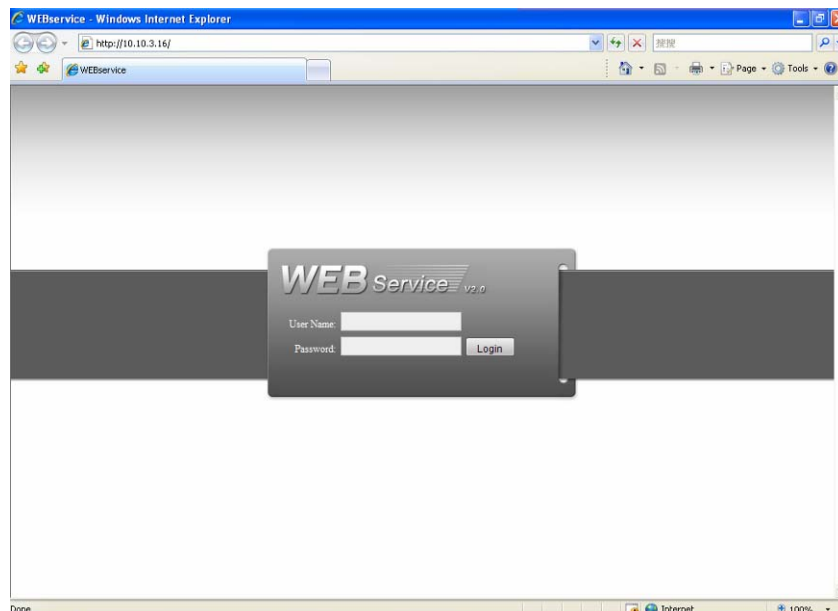


Figure 1-3

### 1.3 Refresh/Login/Logout

You can use the tool to quickly modify device IP address, PPPoE setup, system configuration

and etc. In Figure 1-1, please double click one IP address, you can see an interface is shown as in Figure 1-4.

Or you can select one IP address and then click the login button; you can also go to Figure 1-4. Here you can view device IP address, user name, password and port. You can modify them to login if necessary.

Please note the port information here shall be identical with the port value you set in TCP port in Web Network interface. Otherwise, you can not log in the device.

If you are use device background port 3800 to login, other setups are invalid. Please refer to FAQ for detail information.

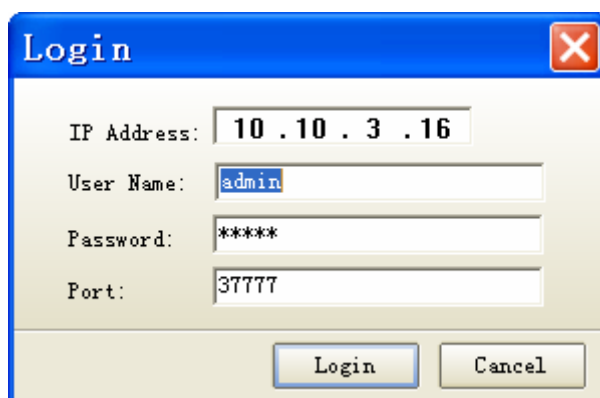


Figure 1-4

**Please refer to the following sheet for detail information.**

Function	Note
IP address	Device IP address
User name	The account you use to log in the quick search tool. The user name shall include in the device account list.
Password	The password you use to log in the quick search tool. The password shall include in the device account list.
Port	Device port value.
Login	Click it to login the tool.
Cancel	Exit current login operation.

## 2 Main Interface

After you logged in the Web, you can view tool network parameter, PPPoE, system information, system upgrade and its corresponding information. You can set relative parameter.

### 2.1 Network Parameter

Click the network parameter item; you can see an interface is shown as below. See Figure 2-1.

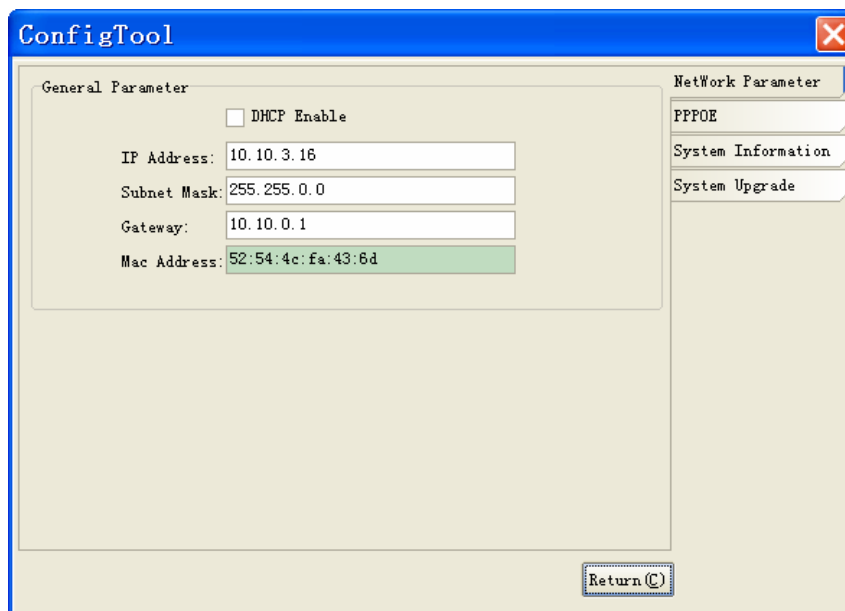


Figure 2-1

Please refer to the following sheet for detail information.

Function	Note
Enable DHCP	Enable or disable DHCP function.
IP address	Device IP address.
Subnet mask	Device subnet mask
Gateway	Device Gateway
MAC address	Device MAC address
Save	Click it to save current parameter.
Return	Go back to search interface.

### 2.2 PPPoE

Click PPPoE item, you can see the following interface. See Figure 2-2.

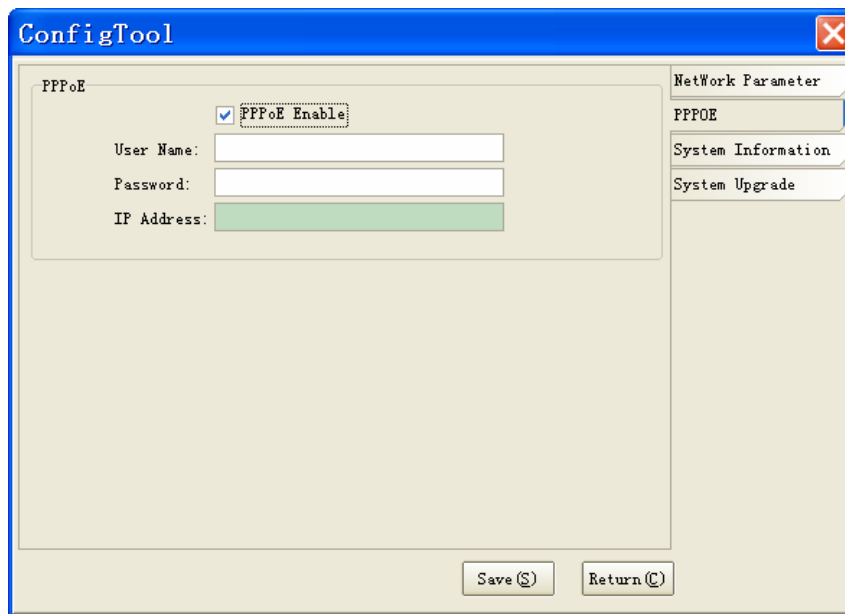


Figure 2-2

Please refer to the following sheet for detail information.

Function	Note
Enable PPPOE	Enable or disable PPPoE function.
User name	PPPOE user name.
Password	PPPOE password.
IP address	The device IP address in the WAN.
Save	Save current parameter.
Return	Go back to tool search interface.

## 2.3 System Information

Click system information button, you can see an interface is shown as in below. See Figure 2-3.



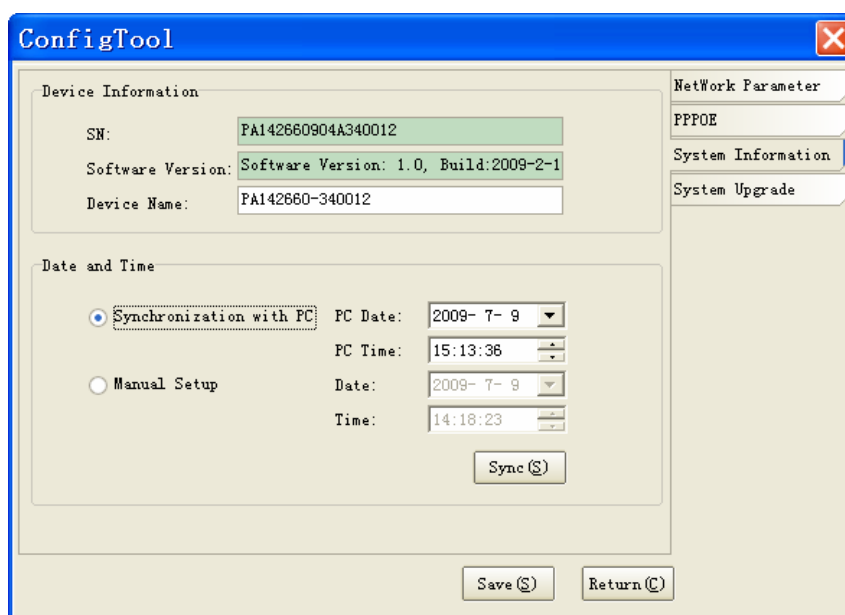


Figure 2-3

Please refer to the following sheet for detail information.

Function		Note
SN		Device serial number.
Software version		Device current software version.
Device name		You can modify device name here.
Synchronization with PC		Select device time and date mode. After you manually set date and time, please click synchronization button to apply it to the PC. Please click save button to save current parameter.
	PC date	PC current date
	PC time	PC current time
Manual setup		Select device time and date mode. After you manually set date and time, please click synchronization button to apply it to the device. Please click save button to save current parameter.
	Date	The date to be set.
	Time	The time to be set.
Sync		Synchronize the time of the device.
Save		Save current parameter.
Return		Return to tool search interface.

## 2.4 System Upgrade

Please follow the steps listed below to upgrade the device.

Click open button to select the upgrade program. See Figure 2-4.

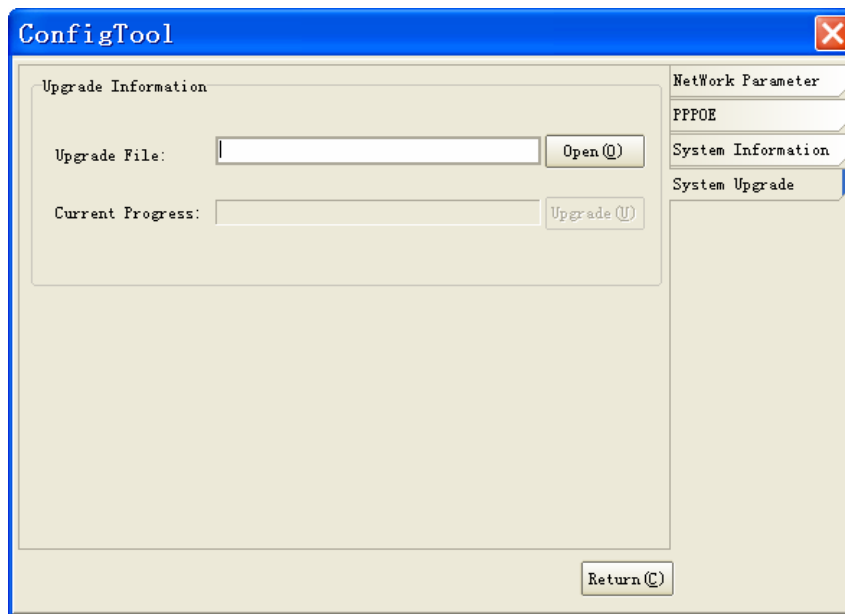


Figure 2-4

After adding the program, click upgrade button to transfer file. You can see a prompt “system is transferring the file, please wait...” See Figure 2-5.

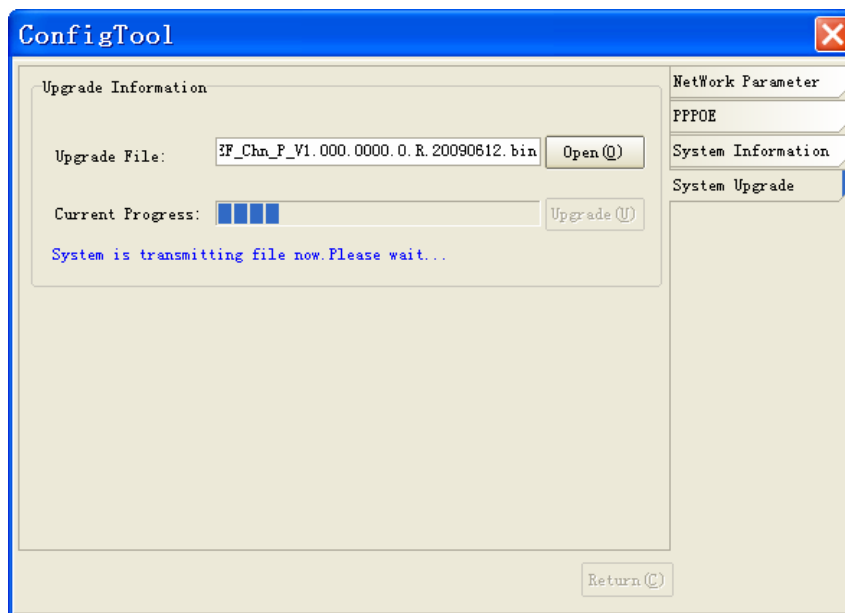


Figure 2-5

After transferring the file, system begins upgrade. See Figure 2-6.

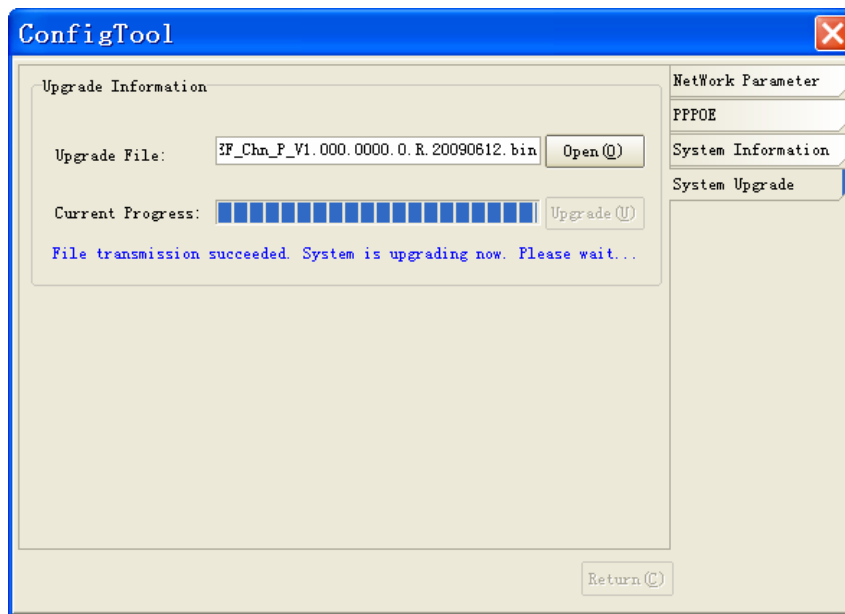


Figure 2-6

After upgrading, system pops up a dialogue box. See Figure 2-7. Please click OK to complete upgrade process.



Figure 2-7

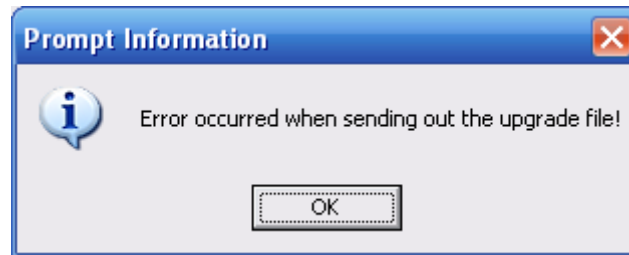
Please refer to the following sheet for detail information.

Function	Note
Upgrade file /open	Click Open button to select the upgrade file.
Current progress/upgrade	Click upgrade button, system begins update. You can view the corresponding information in the interface. The progress information is shown in blue font.
Return	Click it to return tool search interface..

### 3 FAQ

If you can not upgrade, please follow the steps listed below:

- First, please check device upgrade file is right or not. You can select the proper version to update the device.
- If the device is running properly and you still can not upgrade. Please reboot the quick configuration tool and then login again to update the device.
- If the program error occurs, while the device kernel has booted up, you can use background upgrade port 3800 to login the configuration tool main interface to update. Please note, the other values such as PPPoE, system information are invalid.



#### Note

- **This manual is for reference only. Slight difference may be found in the user interface.**
- **All the designs and software here are subject to change without prior written notice.**
- **Please visit our website or contact your local service engineer for more information.**