



XL-ICA301A

Stand Alone Type

SOHO SURVEILLANCE

MANUAL

NOTE: This equipment has been tested and found to comply with the limits for a class digital device, pursuant to part 15 of the FCC Rules. These limits are designed to provide reasonable protection against harmful interference when the equipment is operated in a commercial environment. This equipment generates, uses, and can radiate radio frequency energy and, if not installed and used in accordance with the instruction manual, may cause harmful interference to radio communications. Operation of this equipment in a residential area is likely to cause harmful interference in which case the user will be required to correct the interference at his own expense.



**Disposal of Old Electrical & Electronic Equipment
(Applicable in the European Union and other European
countries with separate collection systems)**

This symbol on the product or on its packaging indicates that this product shall not be treated as household waste. Instead it shall be handed over to the applicable collection point for the recycling of electrical and electronic equipment. By ensuring this product is disposed of correctly, you will help prevent potential negative consequences for the environment and human health, which could otherwise be caused by inappropriate waste handling of this product. The recycling of materials will help to conserve natural resources. For more detailed information about recycling of this product, please contact your local city office, your household waste disposal service or the shop where you purchased the product.

All the safety and operating instructions must be read before the unit is operated.



Trademarks and/or registered trademarks are the property of their respective owners

The information presented in this publication has been carefully prepared and is believed to be correct at the time of publication. However, no responsibility will be assumed for any inaccuracies. Specifications are subject to change without notice.

The information herein is subject to change without notice. This manual is periodically reviewed and revised.

No responsibility is assumed for any errors or omissions in this document.

TABLE OF CONTENTS

DECLARATION OF CONFORMITY	5
PACKAGE CONTENT	7
1. INSTALLATION	8
1-1 CONNECT IP CAMERA TO YOUR LOCAL NETWORK	8
1-1-1 <i>There is DHCP Server in your LAN</i>	8
1-1-2 <i>There is not DHCP Server in your LAN</i>	11
1-2 CONNECT IP CAMERA TO YOUR COMPUTER DIRECTLY	14
1-3 CONNECT IP CAMERA TO INTERNET	14
2. SOFTWARE INSTALLATION	16
2.1 UTILITY CD	16
2.2 LOGIN & ACCESS CAMERA VIDEO	19
2.3 ACTIVE X SECURITY SETUP	20
2.3.1 <i>Device Info</i>	28
2.3.2 <i>Alias Settings</i>	28
2.3.3 <i>Date & Time Settings</i>	29
2.3.4 <i>Users Settings</i>	29
2.3.5 <i>Multi-Device Settings</i>	30
2.3.7 <i>Wireless LAN Settings (2.4GHz Wi-Fi AP required)</i>	31
2.3.8 <i>ADSL Settings</i>	33
2.3.9 <i>UPnP Settings</i>	33
2.3.10 <i>DDNS Service Setting</i>	34
2.3.11 <i>Mail Service Settings</i>	35
2.3.12 <i>FTP Service Settings</i>	36
2.3.13 <i>Alarm Service Settings</i>	37
2.3.14 <i>Upgrade Device Firmware</i>	37
APPENDIX	38
A. IP CAMERA REAR PANEL	38
B. IP CAMERA AIR TAIL WIRE	38
C. TECHNICAL DATA	41
D. CROSS ETHERNET CABLE MAKING TIP	43
E. SNAPSHOTS / SERVER PUSH / SMART PHONES	45
I. Snapshot:	45
II. Firefox (Server Push):	46
III. To play on MPlayer, VLC media player, Coreplayer (Smart Phones)	49
IV. <i>Install XtendLan IP Camera Player on Smart Phones</i>	51
F. 3RD PARTY VIDEO SURVEILLANCE AND RECORDING SOFTWARE	55
G01984	55

Notes, Cautions, and Warnings

There are two levels of special notation used in this manual. They are:



WARNING: If the actions indicated in a “WARNING” are not complied with, injury or major equipment damage could result. A warning statement typically describes the hazard, its possible effect, and the measures that must be taken to reduce the hazard.

CAUTION: If
complied



the action specified in the “CAUTION” is not
with, damage to your equipment could result.

NOTE: A “NOTE” provides supplementary information, emphasizes a point or procedure, or gives a tip for easier operation.

Package Content

1. Indoor Camera

or

Outdoor Camera



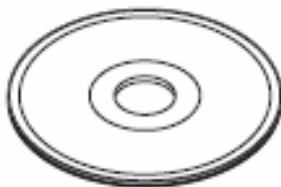
2. Power Adapter : **DC 5V, 1A** (indoor)
DC 5V, 1.5A (outdoor)



Or

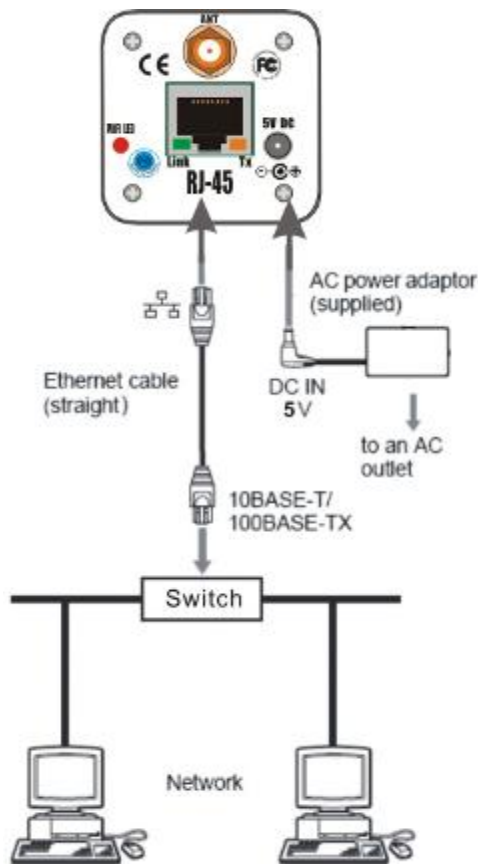


3. Utility CD :



1. Installation

1-1 Connect IP CAMERA to your Local Network

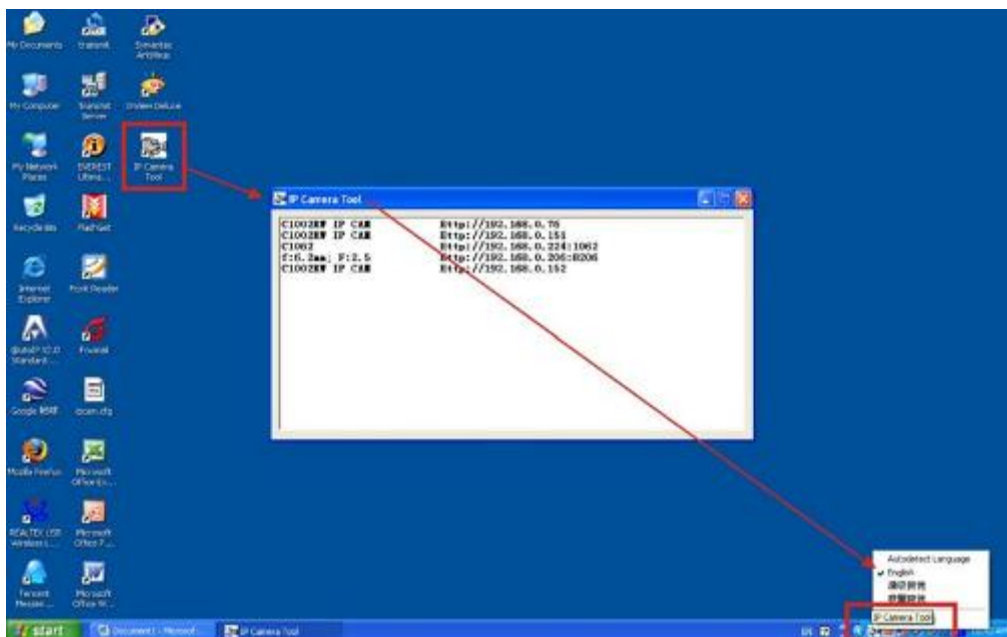


CAUTION:
Please use the DC power adaptor that is provided with the camera. Connecting camera to other power source will cause permanent damage to the camera.

NOTE:
Please use straight Ethernet cable (CAT. 5e) to connect camera to your home/ office network switch/ hub or a broadband router.

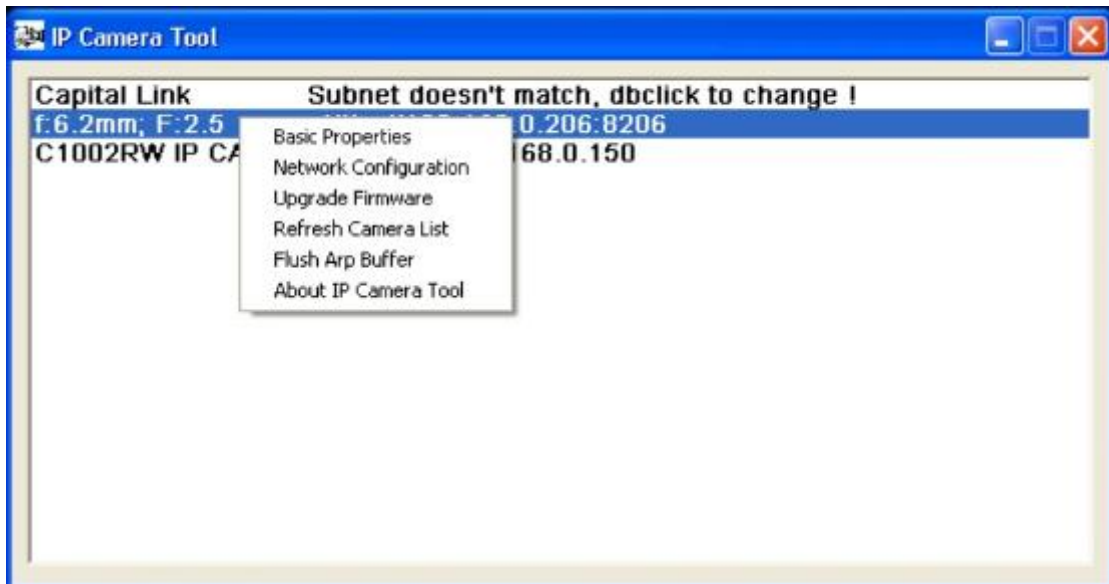
1-1-1 There is DHCP Server in your LAN

The camera will get IP from DHCP Server (Factory Setting).
Please use "IP Camera Tool" in Utility CD to search and link to cameras.

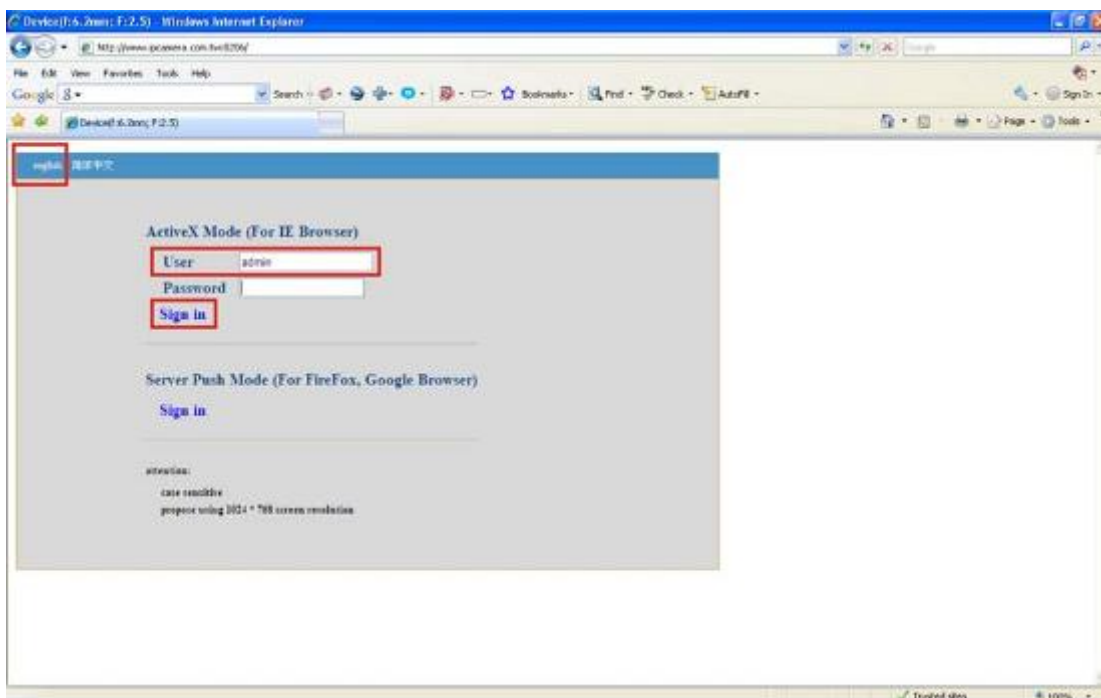


“Right Click” on the small icon in “System tray” (lower right of Taskbar) as indicated in above picture, Adjust the “IP Camera Tool” to “English” mode, If you can’t see text normally.

Select Camera then “Right Click” on selected camera:



“IP Camera Tool” ” in Utility CD will find all the IP CAMERA IP cameras in your local network.

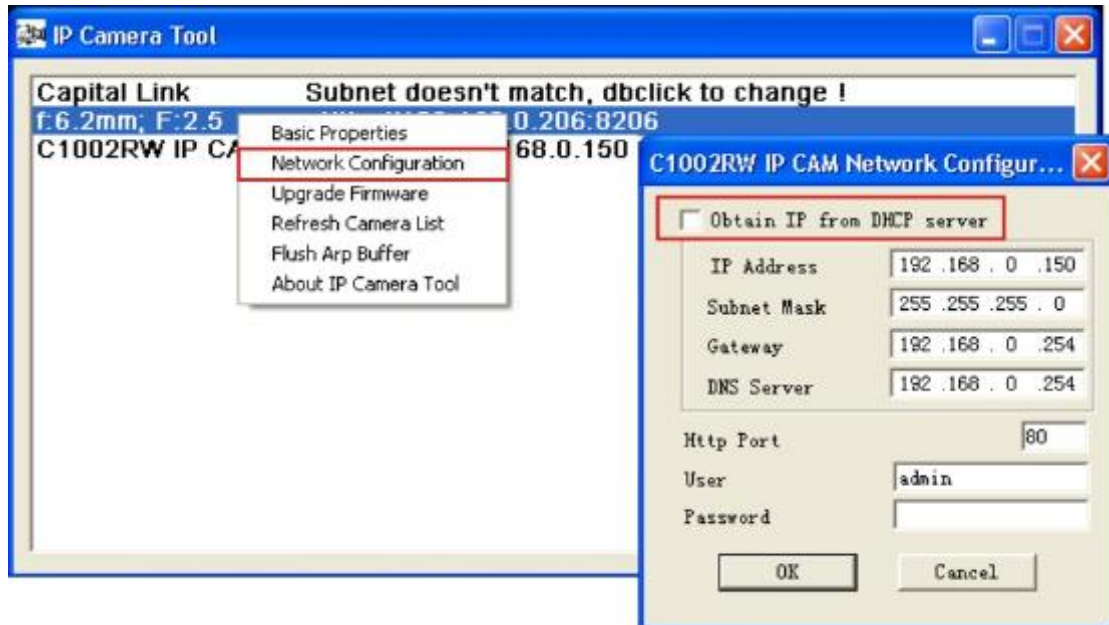


“Double Clicks” on the camera you want to connect, will bring up IE browser

with camera login screen.

Note:

You can choose to modify the camera to fixed IP by Choosing “Network Configuration”



Warning:

Please consult your office network administrator to get a free IP for your IP Camera, duplicated IP address will cause undesired problems.

Normally you will not need to change the network settings automatically obtained from DHCP server.

Please don't check the “Obtain IP from DHCP server” in order to use fixed IP address and network settings.

There is no Password set by factory default, please leave the Password field blank as it is.

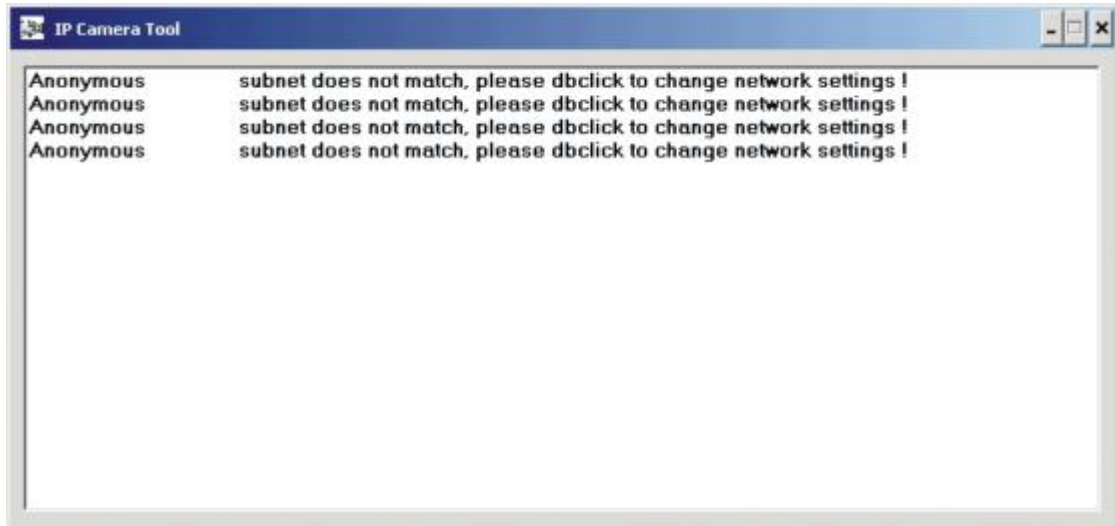


CAUTION:

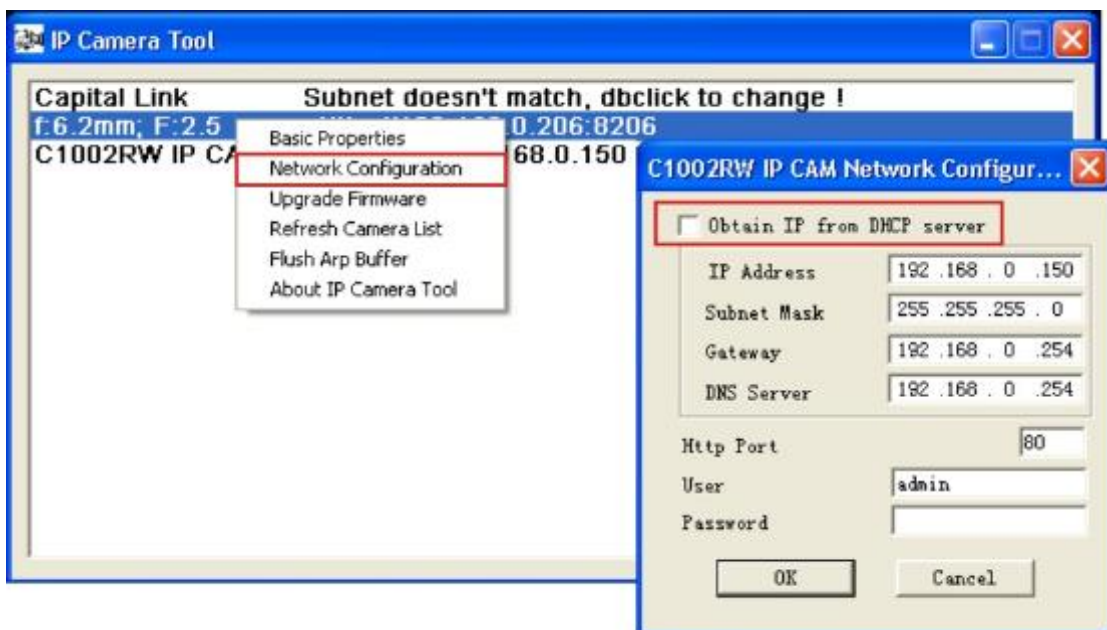
Please always write down the password and keep password in safe place. Please kindly notice, if you forget password you set, you will have to return the camera to Vendor for recovery, there is no way to reset password of your camera.

1-1-2 There is **not DHCP Server in your LAN**

The camera will not be able to get IP from DHCP Server (Factory Setting). Please use “IP Camera Tool” in Utility CD to search and link to cameras.



“IP Camera Tool” ” in Utility CD will find all the IP CAMERA IP cameras in your local network.

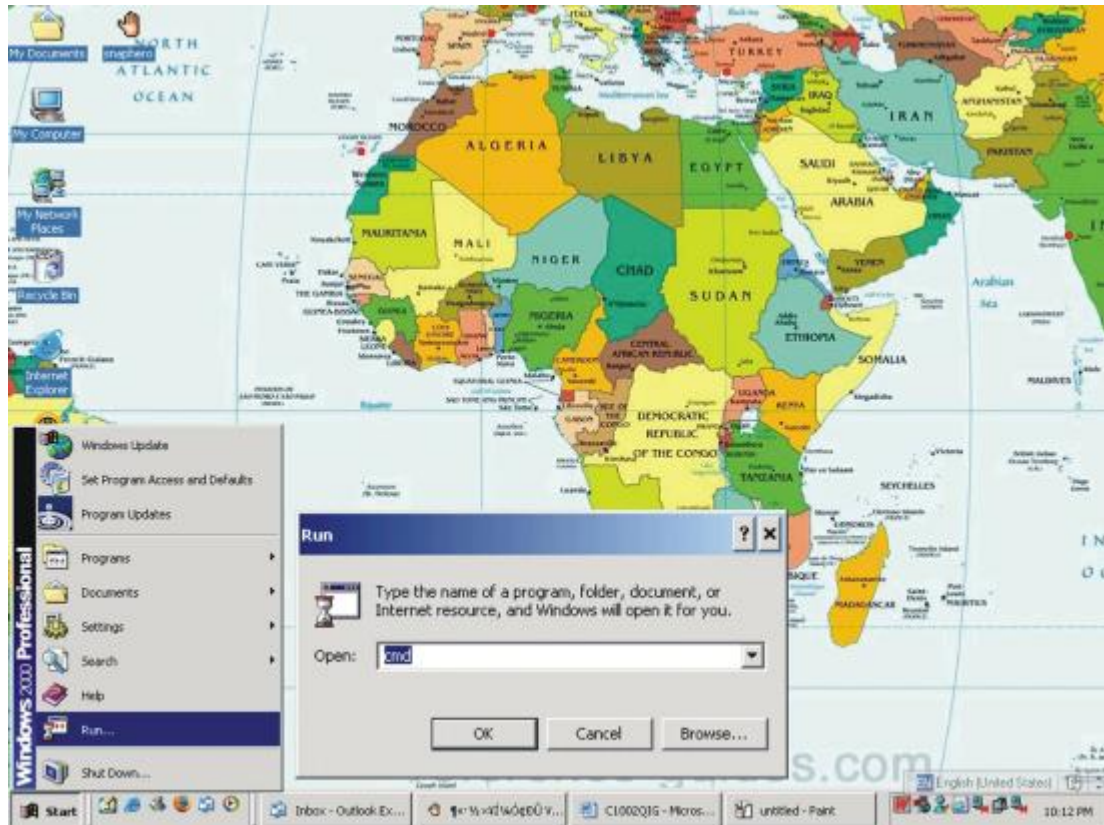


“subnet does not match, dbclick to change !” will shown to indicate you will not be able to link to your camera at this step. You must choose “Network Configuration” to set the camera to fixed IP.

Please modify the “IP Address” to the same subnet of your computer.

Normally the IP should start with “192.168.xxx.xxx”

If you are not sure of your computer IP address, please go to DOS mode by : “START” => “RUN” => Open “CMD”



Type "ipconfig /all" at command prompt,

```

C:\WINNT\system32\cmd.exe
Microsoft Windows [Version 5.00.2195]
(C) Copyright 1985-2000 Microsoft Corp.

C:\Documents and Settings\Administrator>ipconfig /all

Windows 2000 IP Configuration

    Host Name . . . . . : fujitsulifebook
    Primary DNS Suffix . . . . . : 
    Node Type . . . . . : Broadcast
    IP Routing Enabled. . . . . : No
    WINS Proxy Enabled. . . . . : No
    DNS Suffix Search List. . . . . : domain

Ethernet adapter Local Area Connection 5:

    Connection-specific DNS Suffix . : domain
    Description . . . . . : Intel(R) PRO/100 M Network Connection #2
    Physical Address. . . . . : 00-D0-83-04-C8-ED
    DHCP Enabled. . . . . : Yes
    Autoconfiguration Enabled . . . . : Yes
    IP Address. . . . . : 192.168.0.232
    Subnet Mask . . . . . : 255.255.255.0
    Default Gateway . . . . . : 192.168.0.1
    DHCP Server . . . . . : 192.168.0.1
    DNS Servers . . . . . : 168.95.192.1
    . . . . . : 168.95.1.1
    Lease Obtained. . . . . : Sunday, July 29, 2007 9:15:36 PM
    Lease Expires . . . . . : Sunday, July 29, 2007 11:15:36 PM

Ethernet adapter Local Area Connection 4:

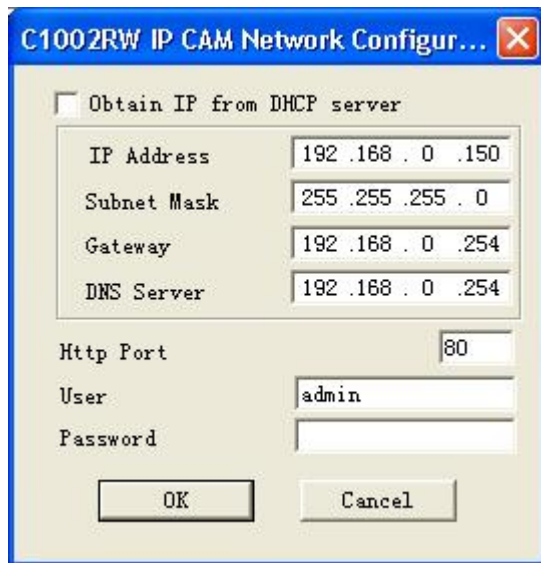
    Media State . . . . . : Cable Disconnected
    Description . . . . . : Intel(R) PRO/100 M Network Connection #1
    Physical Address. . . . . : 00-D0-83-04-C8-EC

Ethernet adapter Local Area Connection 3:

    Media State . . . . . : Cable Disconnected
    Description . . . . . : TAP-Win32 Adapter U8
    Physical Address. . . . . : 00-FF-D0-22-A2-B4

C:\Documents and Settings\Administrator>_
    
```

You will be able to find you computer network settings.

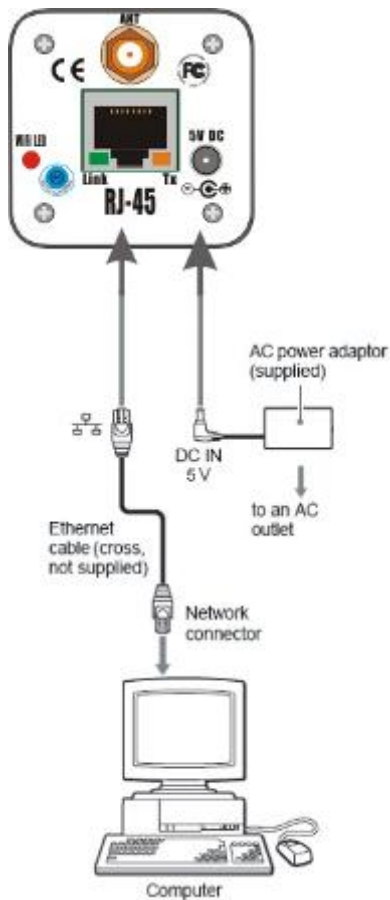


The screenshot shows a dialog box titled "C1002RW IP CAM Network Configur...". It has a checkbox labeled "Obtain IP from DHCP server" which is unchecked. Below this are four input fields: "IP Address" with the value "192 .168 . 0 .150", "Subnet Mask" with "255 .255 .255 . 0", "Gateway" with "192 .168 . 0 .254", and "DNS Server" with "192 .168 . 0 .254". Below these is a "Http Port" field with the value "80". There are also "User" and "Password" fields, with "admin" entered in the User field and the Password field being empty. At the bottom are "OK" and "Cancel" buttons.

After input correct network settings, press "OK"

Follow the procedures described in 1-1-1 There is DHCP Server in your LAN
There is no Password set by factory default, please leave the Password field blank as it is.

1-2 Connect IP CAMERA to your computer directly



Because there is no DHCP Server available, you have to setup the network settings manually.

Please follow the procedures in previous sections (1-1-2) to link to your camera.

Note:

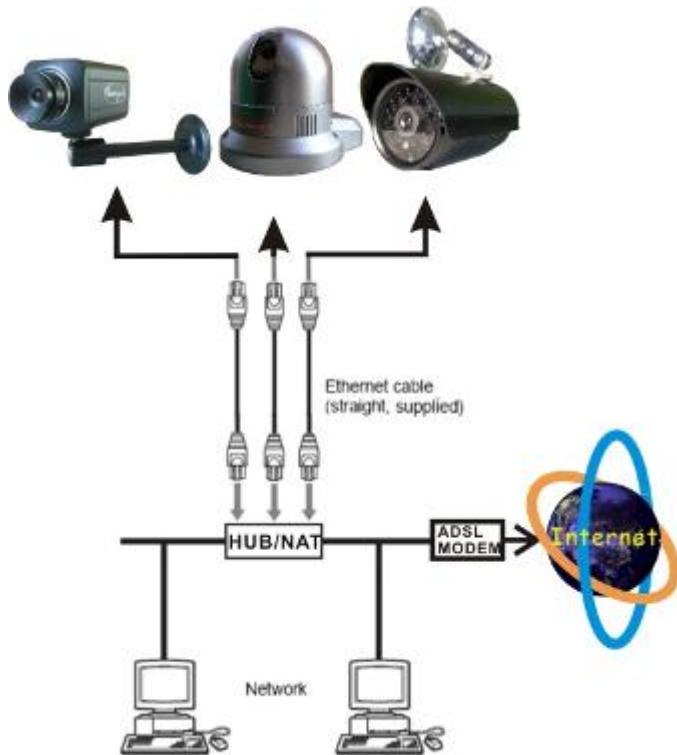
Please be aware of **"Your computer IP must be manually set first"**, Your computer Network Interface card won't be able to get IP from DHCP server if connect camera to your PC directly.

1-3 Connect IP CAMERA to Internet

Connect IP Camera to broadband router or gateway.

Do the following setup:

1. Setup Virtual Server/ forward port on your router to camera,
2. or set router DMZ to your IP Camera IP,
3. Obtain DDNS service from DynDNS if you don't have fixed public IP,
4. Setup DDNS account information to your camera
5. Access camera URL through Internet.



your NAT

Example:

http://your_camera.dyndns.org:port

Please reference more details of Router & DynDNS setup on Reference User's Manual.

Note:

- 1. Broadband router is firewall in nature will block all accesses from Internet, you will need to set virtual server (port forwarding) on your router, normally we will always suggest to use port > 1024 to avoid conflicts, port <1024 are frequently used by other applications.**
- 2. Check if the DNS & Gateway setting are correct, it is impossible to get out of your LAN if wrong. (Gateway is the door, DNS is like "map", people won't go out home without knowing where the door is or don't have map to find the way)**
- 3. Always test the DDNS service from another IP (that is out side of your LAN), some router will block WAN port access from LAN.**
- 4. Check the network setting of IP CAMERA IP Camera, the gateway IP is your broadband router IP.**
- 5. Check the network setting of IP CAMERA IP Camera, ask your ISP the DNS IP or get DNS IP from your broadband router IP.**

2. Software Installation

2.1 Utility CD.

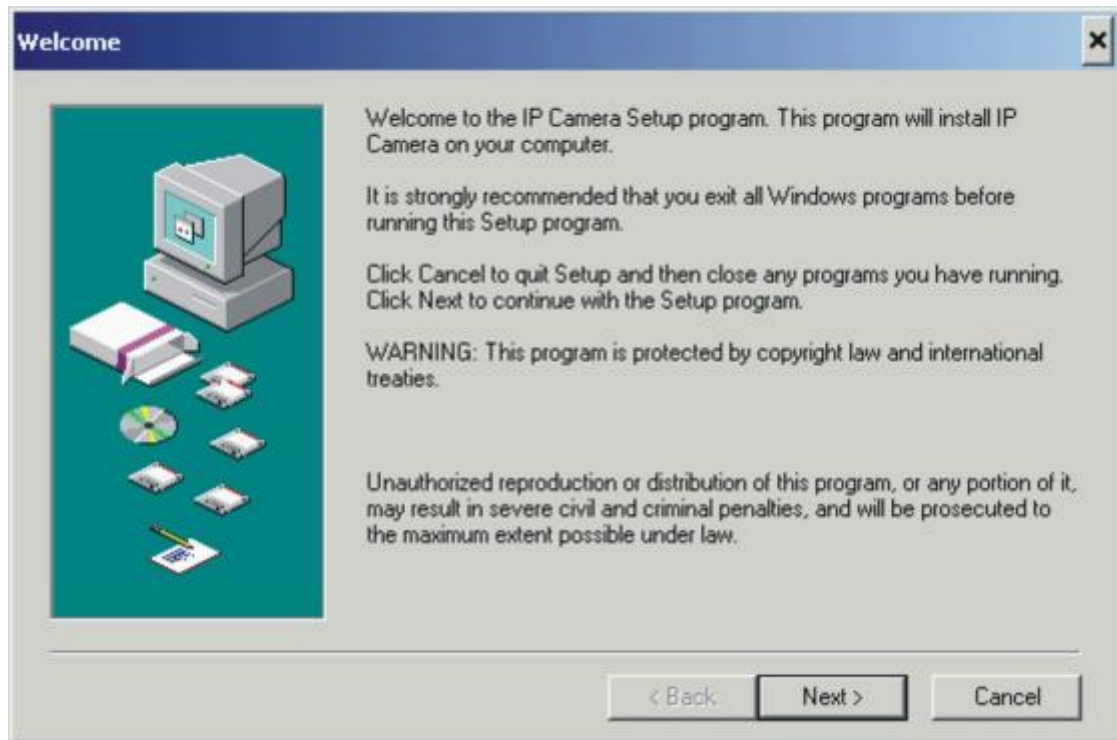
Please insert the “Utility CD” into your CD-ROM drive, auto-run program will start and below screen will guide you through installation.



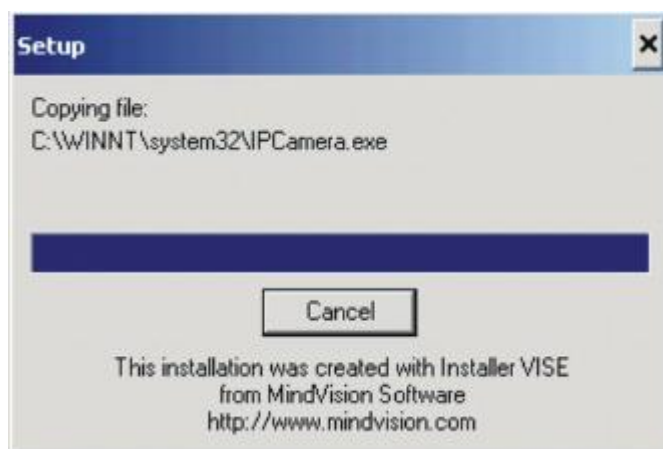
To install software and ActiveX plug-in

Please click on the “Install 1st” tab to install software and ActiveX plug-in.





Click on “Next”,



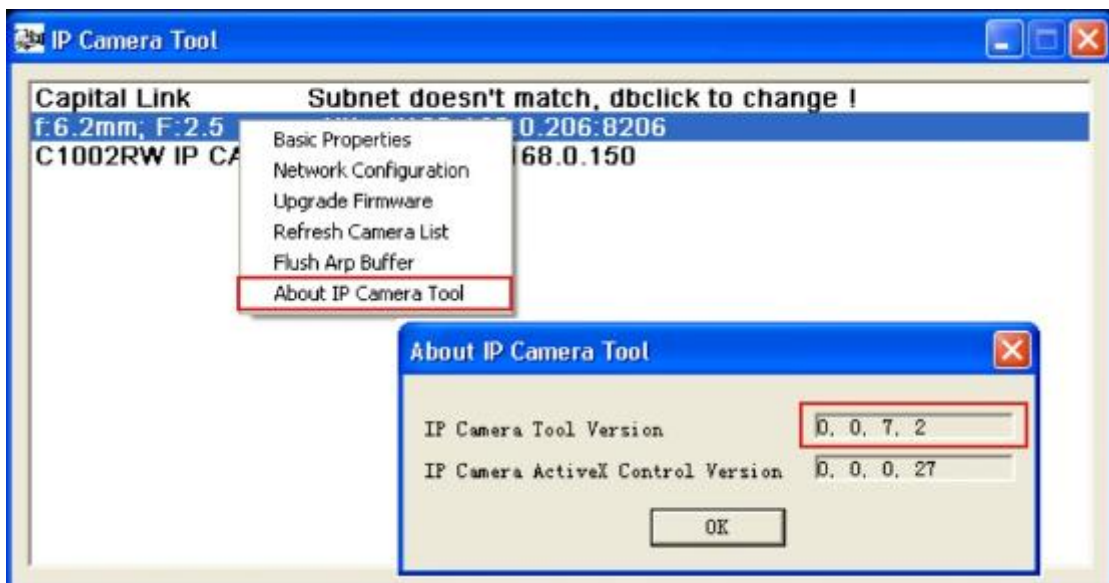


Click on “Close”,

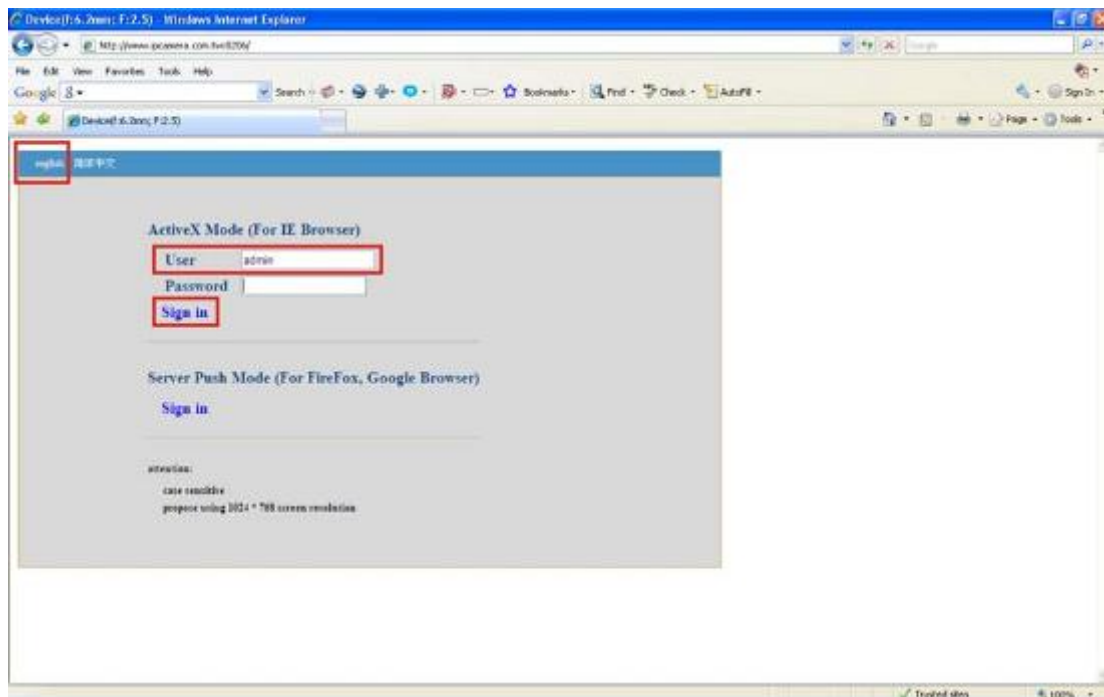


The IP Camera search utility software icon will display on your desktop.

Click on the “IP Camera Tool” tab to search IP CAMERA IP cameras in your local network.



2.2 Login & Access Camera video



“Double Clicks” or “Right Click” on the camera you want to connect, choose “Access IP Camera” will bring up IE browser with camera login screen.

Type “[admin](#)” in User field, there is no [admin](#) Password set by factory default; please leave the Password field blank as it is. Click on “Sign in” tab
Note:

Please notice it’s lower case characters [admin](#), the User and Password are capital sensitive.

On the top left corner, select language (English or Chinese).

Note:

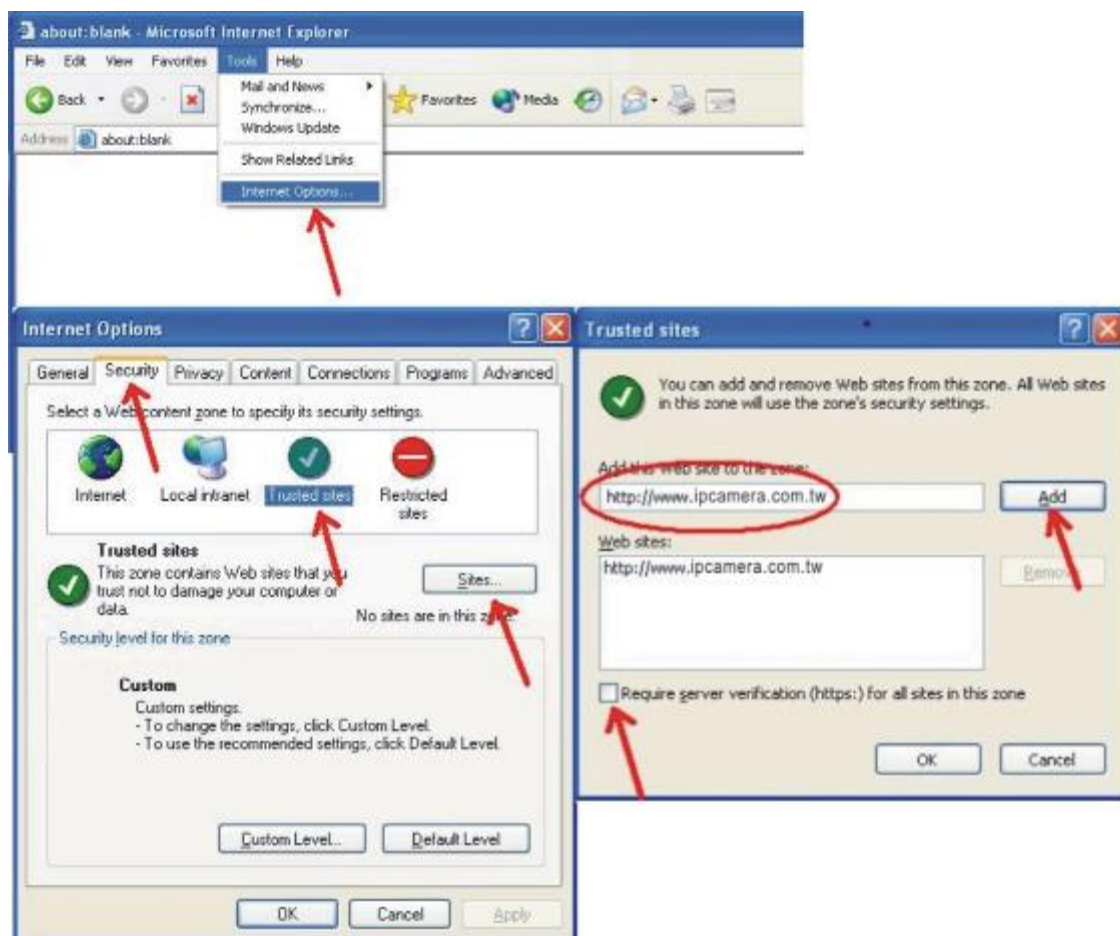
1. IP CAMERA IP camera will required a Microsoft Windows based PC with Media Player 7.0 or later installed.
2. If the video don’t start, please reference the “ActiveX_Security_Setup” section below
3. If you see only white screen and your camera is in outdoor or expose to strong light, please change the “Mode” to “Outdoor”.
4. If you see flickers on video and your camera is installed indoor, please change the “Mode” to “50Hz” or “60Hz” according to the electricity of your country.

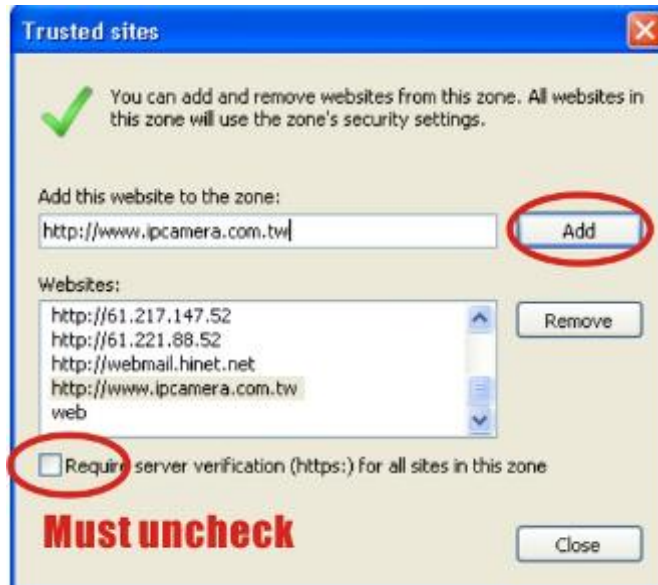
2.3 ActiveX Security Setup

1. Install "IP Camera Tool", ActiveX controller is installed simultaneously (**click on the "Install 1st" tab**).
2. Download ActiveX controls and set the safety property of IE in the PC when you view it **at the first time only**:

In order to download & install ActiveX controls, you will need to add your camera IP/ url address to your IE browser "**Trusted sites**"

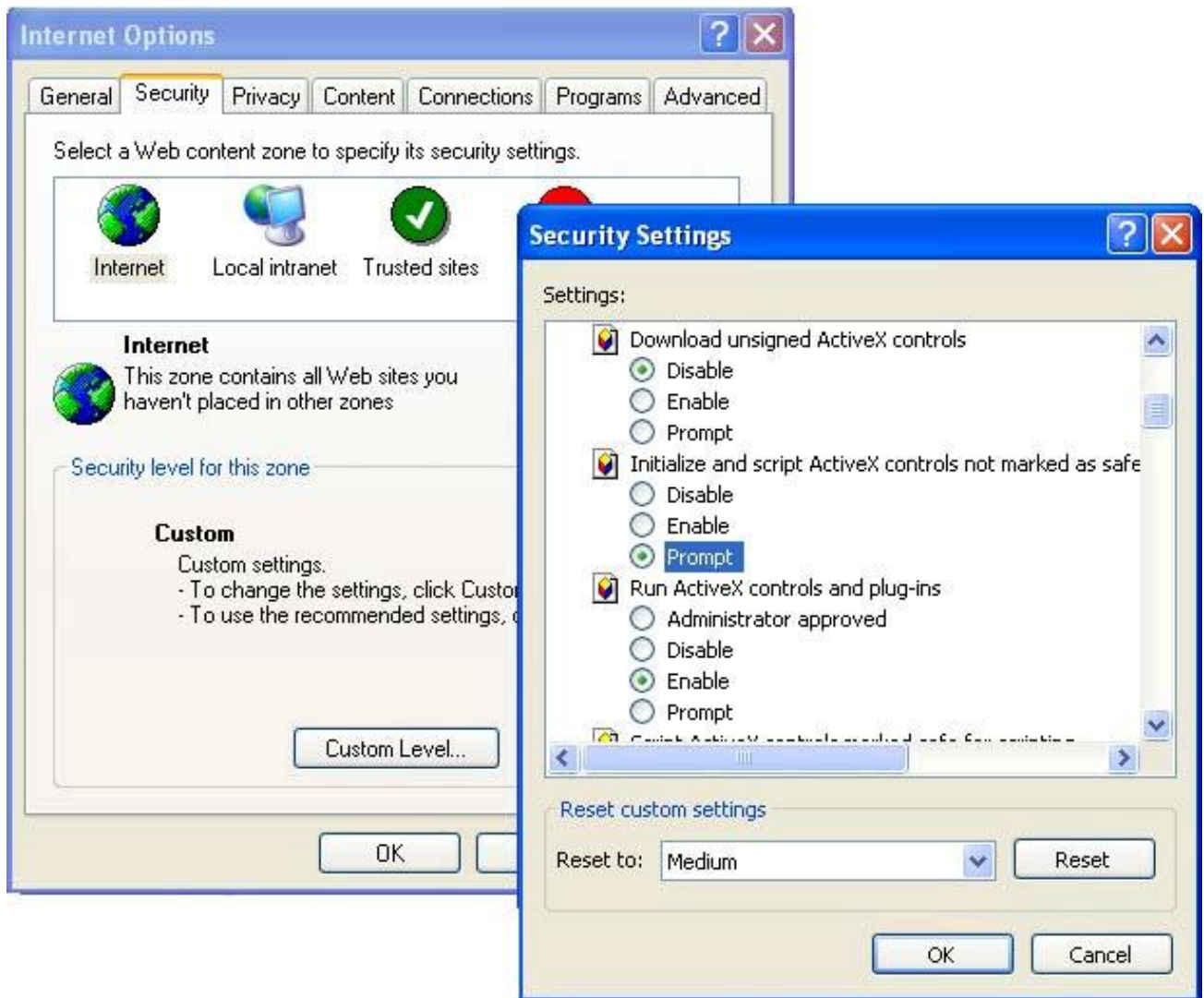
IE browserÆ"Tool"Æ"Internet Options"Æ"Security"





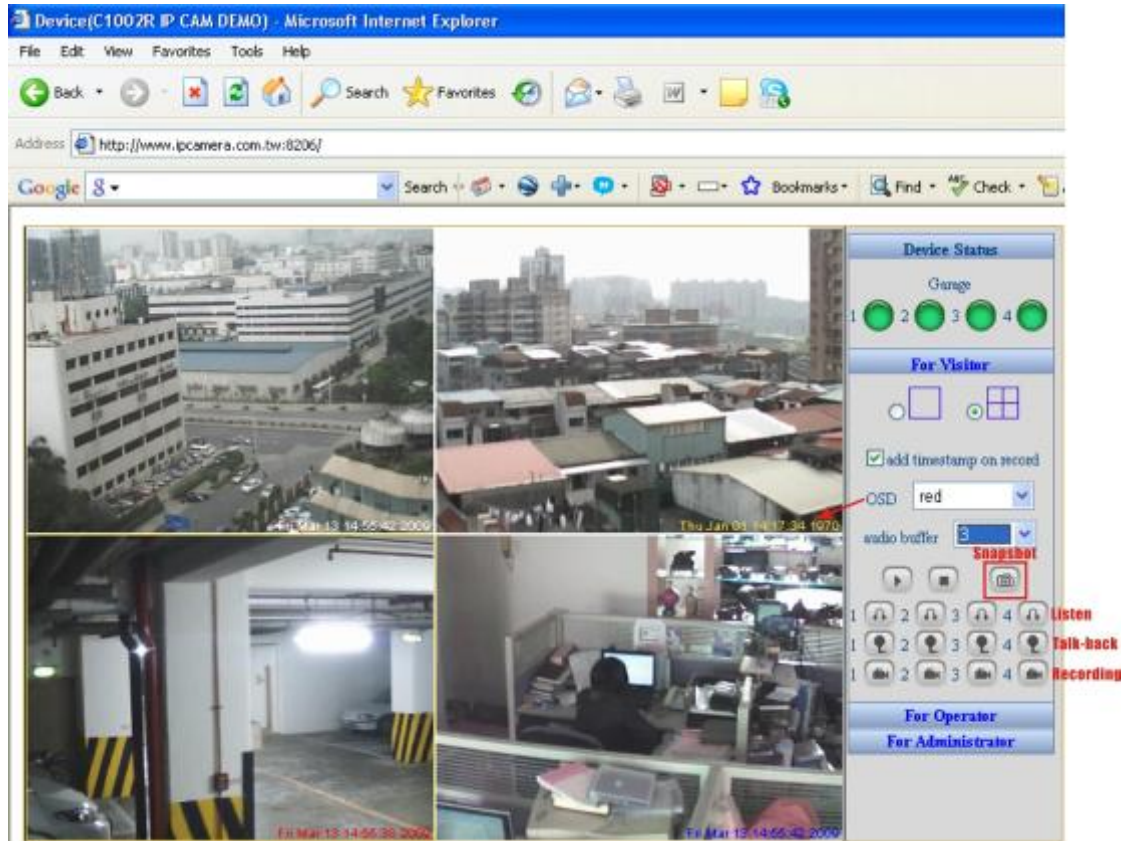
IE browserÆ“Tool”Æ“Internet Options”Æ“Security”Æ“Custom Level”Æ
“ActiveX control and Plug-ins” three settings should set to “Enable”,



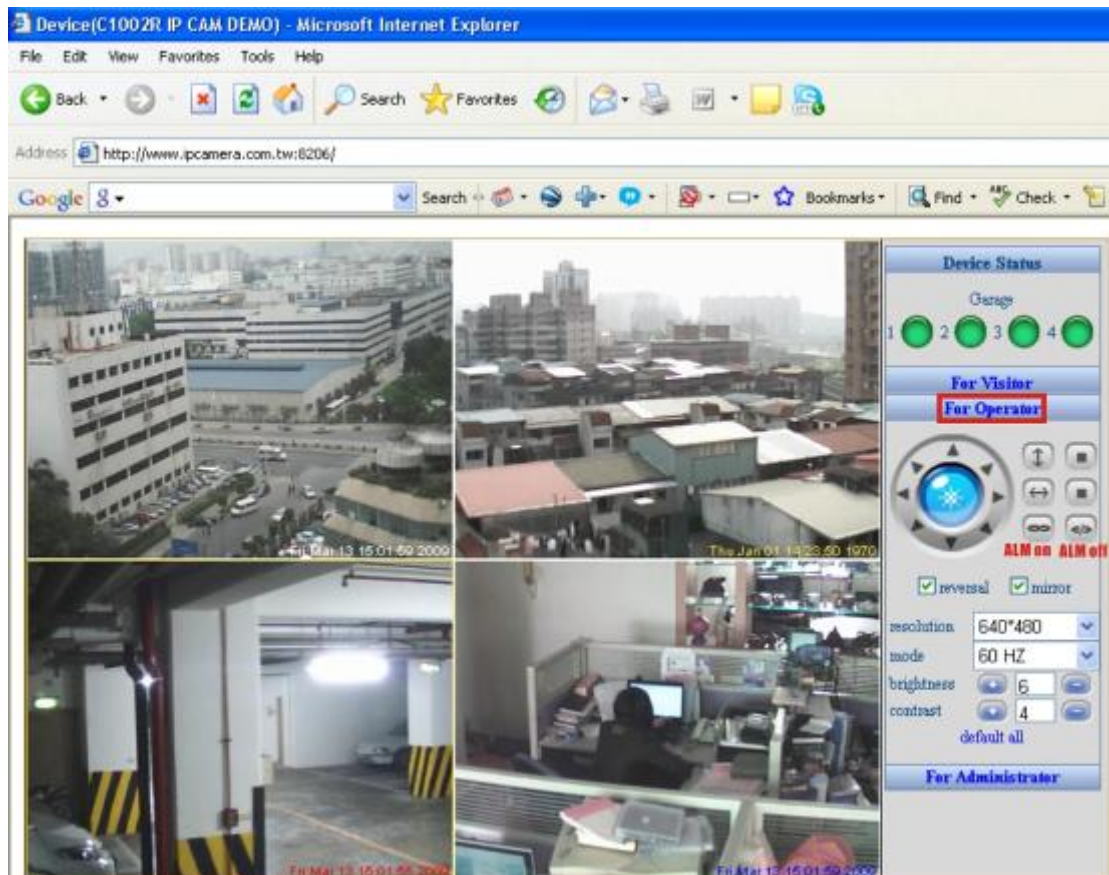


- Enable:Download unsigned ActiveX controls**
- Enable:Initialize and script ActiveX controls not marked as safe**
- Enable:Run ActiveX controls and plu-ins**

After installed CAMERA ActiveX controls, enable “**Run ActiveX controls and plu-ins**”, you can view camera video as followed:



Choose OSD to add time stamp; double click on video to view full screen
 Enable duplex audio by clicking "Listen" & "Talk-back" buttons





reversal : used to upside down the image for ceiling mount.



Mirror : used to mirror image for ceiling mount.



the



PAN/ TILT control

Description of Monitoring Page



Resolution : 320x240 □ QVGA □ / 640x480 □ VGA □

Working environment Mode : indoor (50Hz/ 60Hz) / outdoor

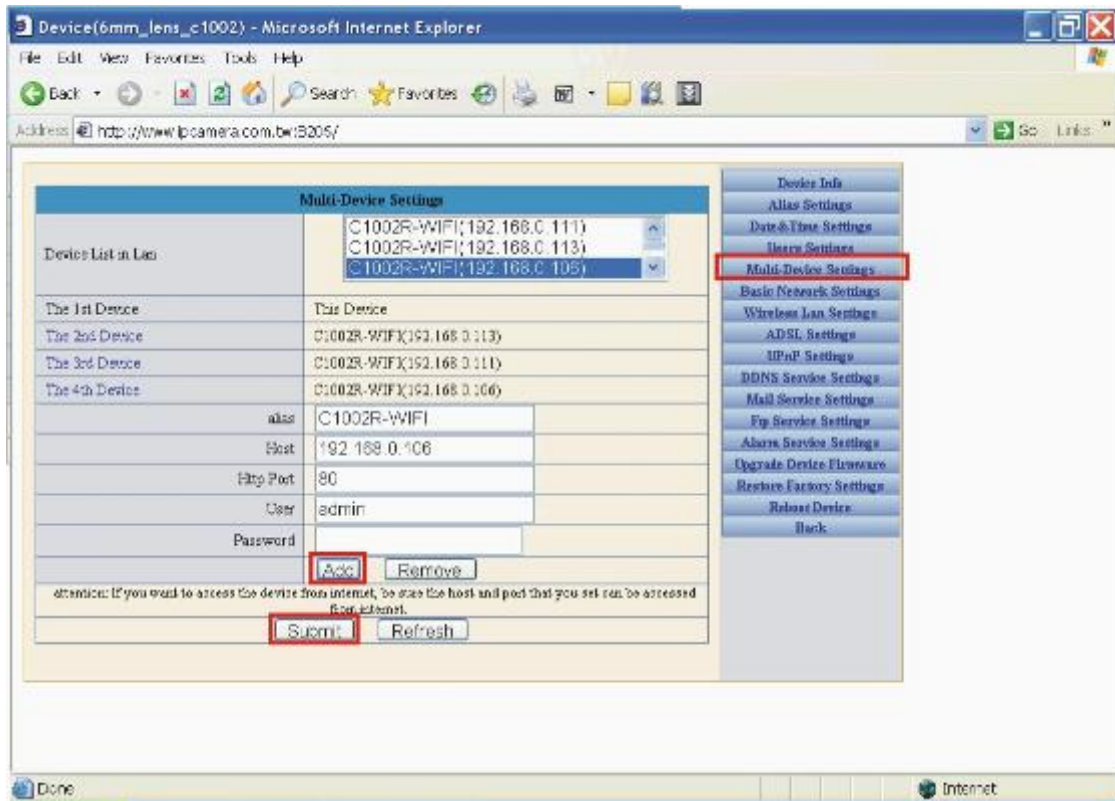
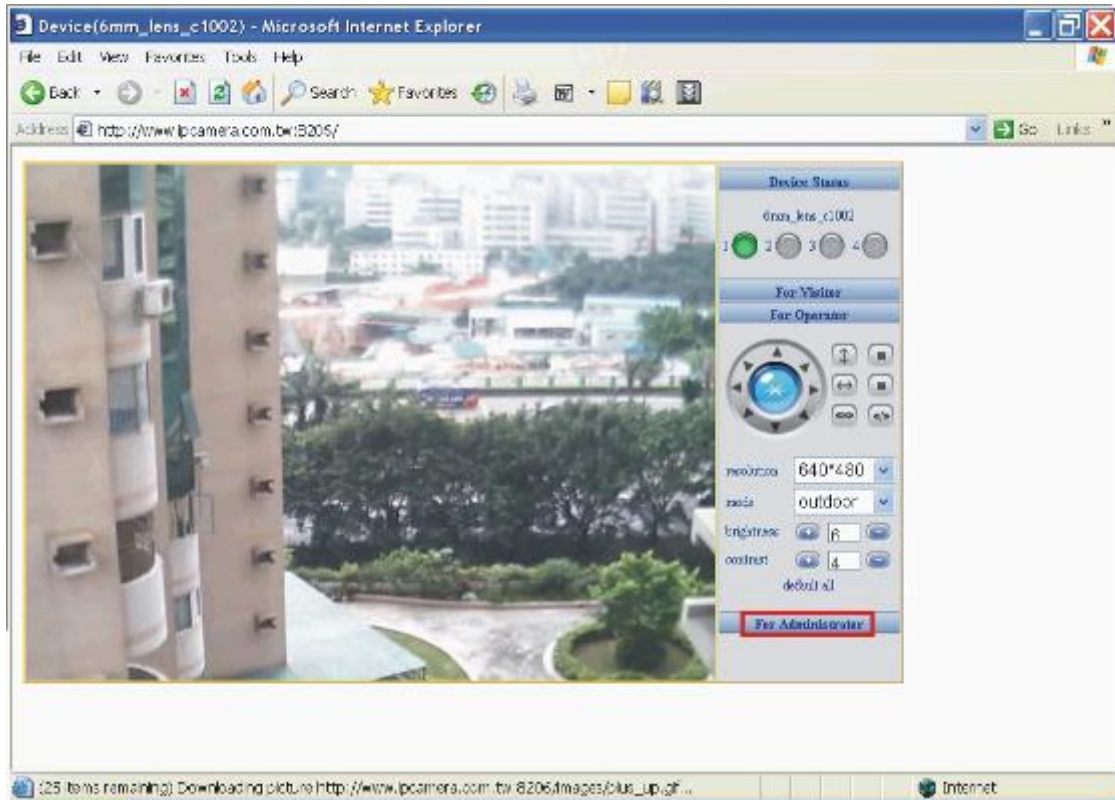
Photo parameter modulation □ Brightness, Contrast

Scout menu : “Snapshot” and “Record” **Scout window setting :**

1. May see only current window
2. May increase 3 IP cameras, real-time view video in four windows as below



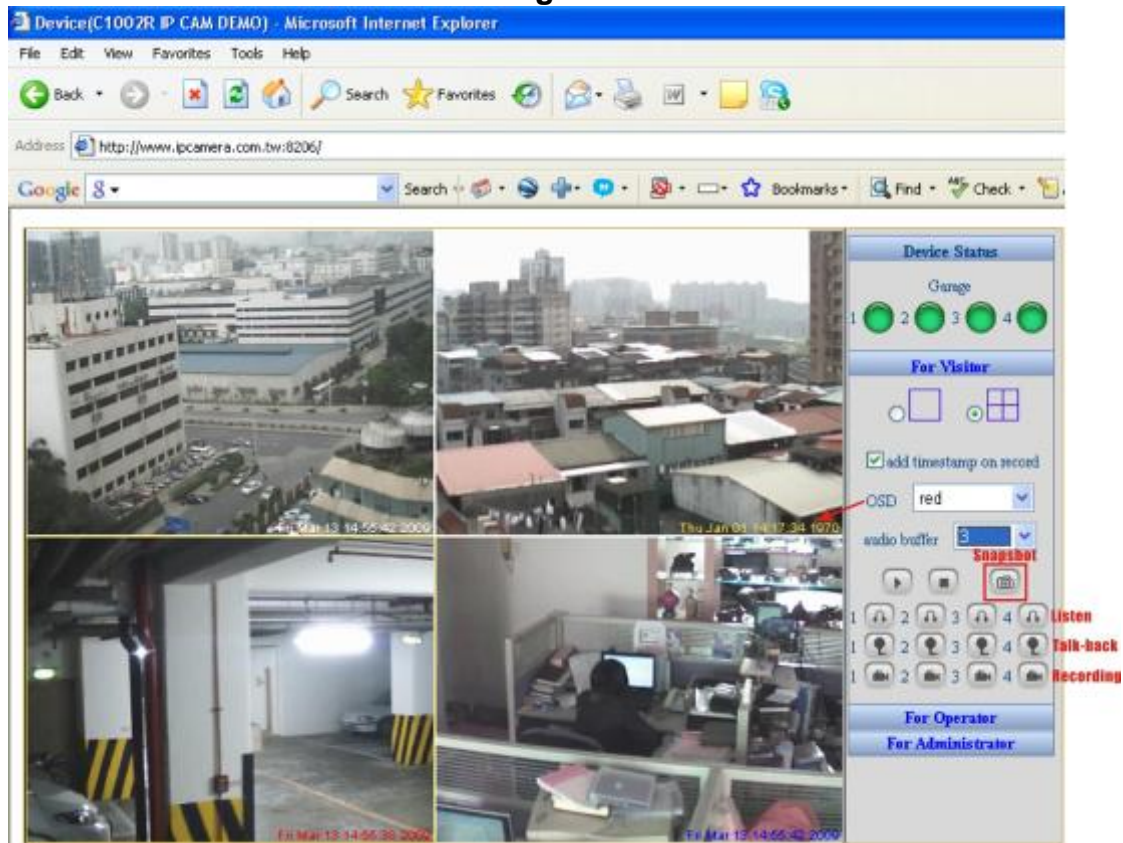
To view four cameras simultaneously, go to Administrator setup page, Select “[Multi-Device Setting](#)”, as illustrated as followed.



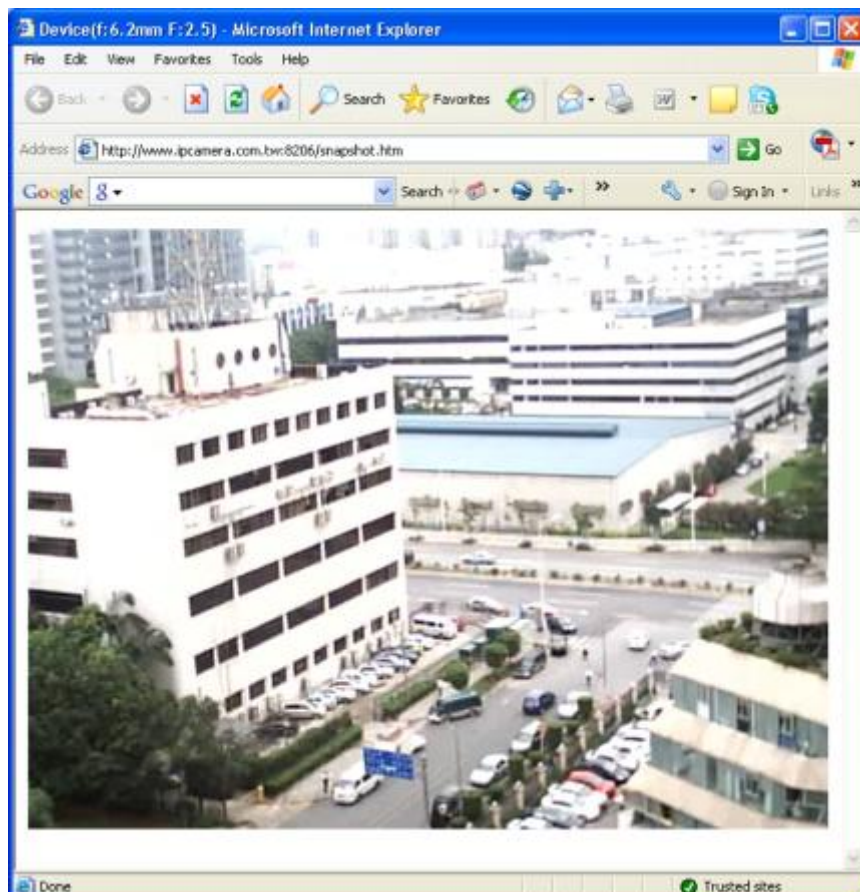
Note:

If you will access from remote through Internet, please input URL (Domain name) in Host field. LAN IP won't be accessible through Internet

Click on channels to start recording:



To take snapshot of present scene on screen, click on the “snapshot” button:



2.3 Administrator setup page Page

2.3.1 Device Info

Device Info	
Device ID	00051DE85111 ← Mac Address
Device Firmware Version	0.2.1.33
Device Embedded Web UI Version	0.4.1.28 ← Available after Feb. 2009

Indicates Camera ID & Firmware version.

Device Firmware Version x.x.x.17 or later will support below http command:

Username: **admin**

Password:

Type the snapshot http commands to IE browser address field, you will get real time snapshot immediately, press F5 key (refresh) will update the new snapshot. Type the snapshot http commands to Firefox/ Mozilla browser address field, type "Enter" & "F5" keys to start live video stream immediately.

Note:

IE browser doesn't support Server Push http command.

2.3.2 Alias Settings

Alias Settings	
alias	6mm lens
<input type="button" value="Submit"/> <input type="button" value="Refresh"/>	

Camera Alias : Input the camera name for you to recognize.

2.3.3 Date & Time Settings

Date & Time Settings	
Device Clock Time	Wednesday, December 19, 2007 9:50:10 PM
Device Clock Timezone	(GMT) Greenwich mean time; London, Lisbon, Dublin
Sync with NTP Server	<input checked="" type="checkbox"/>
Ntp Server	time.nist.gov
Sync with PC Time	<input type="checkbox"/>
<input type="button" value="Submit"/> <input type="button" value="Refresh"/>	

Camera will synchronize with Internet Server every hour automatically.

2.3.4 Users Settings

Users Settings		
User	Password	Group
admin		Administrator
Clairvoyant	Administrator
user	Operator
guest		Visitor
		Visitor
		Visitor
		Visitor
		Visitor
<input type="button" value="Submit"/> <input type="button" value="Refresh"/>		

Administrator: Can change settings

Operator: Can select Resolution, Indoor/ Outdoor, PTZ (PTZ model only)

Visitor: Can only view.



CAUTION:

Please always write down the password and keep password in safe place. Please kindly notice, if you forget password you set, you will have to return the camera to Vendor for recovery, there is no way to reset password of your camera.

2.3.5 Multi-Device Settings

Add 3 more cameras from "[Device List In LAN](#)"

Multi-Device Settings	
Device List in Lan	<div style="border: 1px solid gray; padding: 2px;"> C1002R-WIFI(192.168.0.111) C1002R-WIFI(192.168.0.113) C1002R-WIFI(192.168.0.106) </div>
The 1st Device	This Device
The 2nd Device	C1002R-WIFI(192.168.0.113)
The 3rd Device	C1002R-WIFI(192.168.0.111)
The 4th Device	C1002R-WIFI(192.168.0.106)
alias	C1002R-WIFI
Host	192.168.0.106
Http Port	80
User	admin
Password	
	<input type="button" value="Add"/> <input type="button" value="Remove"/>
attention: If you want to access the device from internet, be sure the host and port that you set can be accessed from internet.	
	<input type="button" value="Submit"/> <input type="button" value="Refresh"/>

Note:

Please use URL in Host if you will access from Internet. LAN IP address will not be accessible from Internet.

Multi-Device Settings	
Device List in Lan	
The 1st Device	This Device
The 2nd Device	C1002(www.ipcamera.com.tw)
alias	C1002
Host	www.ipcamera.com.tw
Http Port	8206
User	admin
Password	
	<input type="button" value="Add"/> <input type="button" value="Remove"/>
The 3rd Device	None
The 4th Device	None
attention: If you want to access the device from internet, be sure the host and port that you set can be accessed from internet.	
	<input type="button" value="Submit"/> <input type="button" value="Refresh"/>

2.3.6 Basic Networking Settings

Basic Network Settings	
Obtain IP from DHCP Server	<input type="checkbox"/>
IP Addr	192.168.0.206
Subnet Mask	255.255.255.0
Gateway	192.168.0.1
DNS Server	202.96.134.133
Http Port	8206
<input type="button" value="Submit"/> <input type="button" value="Refresh"/>	

Factory default the “Using DCHP” is chosen, the IP Camera will try to get IP address automatically from DHCP SERVER of your network.

You can also configure the IP address manually.

IP: enter the IP address assigned.

Mask: Enter the subnet mask. The default is 255.255.0.0

Gateway: Enter IP gateway, normally is your broadband router IP address.

DNS: Enter DNS IP address provided by your ISP (Internet service provider). Http

Port: Enter the input port number, default as 80.

If IP camera connects with ADSL directly chose Using ADSL Dialup, enter ADSL dialup user and password

Note:

After “Submit” new network settings, camera will reboot to adopt new settings automatically.

2.3.7 Wireless LAN Settings (2.4GHz Wi-Fi AP required)

Wireless Lan Settings	
Using Wireless Lan	<input checked="" type="checkbox"/>
SSID	XLNET
Channel	1
Encryption	WEP
Authetication	Open System
Key Format	ASCII Character
Default TX Key	1
Key 1	<input type="text"/> 128 bits
Key 2	<input type="text"/> 64 bits
Key 3	<input type="text"/> 64 bits
Key 4	<input type="text"/> 64 bits
<input type="button" value="Submit"/> <input type="button" value="Refresh"/>	

Using Wi-Fi Lan: Only for wireless IP Camera, you must set correct SSID and WEP

Key (IF your Wi-Fi AP enables WEP encryption)

Set correct SSID and WEP Key according to your Wi-Fi AP.

If your Wi-Fi AP enables WEP, **WPA, WPA2** encryption (64 bits/ 128 bits), input WEP key in HEX or ASCII format.

Wireless Lan Settings	
Using Wireless Lan	<input checked="" type="checkbox"/>
SSID	<input type="text"/>
Encryption	WPA2 Personal (TKIP + AES) ▼
Share Key	<div style="border: 1px solid black; padding: 2px;"> None WEP WPA Personal (TKIP) WPA Personal (AES) WPA2 Personal (AES) WPA2 Personal (TKIP + AES) </div>

Channel will be set automatically according to AP, no need to set manually.

Note:

Please try wireless without encryption first, must set the AP SSID correctly. IP CAMERA will find AP by SSID assigned. Please notice the SSID is capital sensitive, must be correct uppercase or lowercase.

IP CAMERA is 2.4GHz Wi-Fi client, will link to Access Point (AP) of your network. Optional Higher gain directional antenna can be used to extend the wireless link distance.

1. IP CAMERA is 2.4GHz **802.11g** wireless client, please don't use 5GHz AP.
2. Please must power on without Ethernet cable connected, or the wireless won't be effective. If power on with RJ-45 connected, IP CAMERA will connect to network by wire. Wired connection always has higher priority than wireless. Please follow the below rules will help establish wireless link easier.

1. Set correct wireless settings with wired connection first, It's better to use fixed IP address instead of DHCP (dynamic IP).
2. Un-plug **Power** and **Ethernet cable** after setting the wireless parameters.
3. Power on the IP CAMERA (be sure without the wired ethernet connected)
4. Go to command mode (C:\), use "**ARP -d**" to clear **arp table**
5. Access the **same IP address** (wired IP address) to connect IP CAMERA wirelessly.

6. If you will us multiple XtendLan Wi-Fi IP Cameras, please **set your 802.11g/b AP to g only mode to get best performance.**

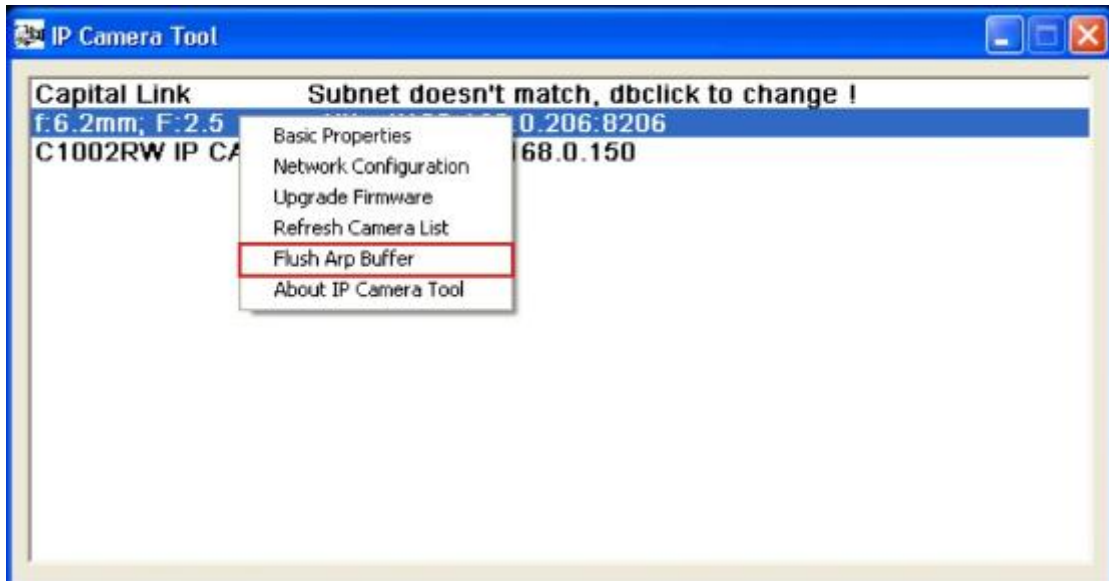
Note:

IP CAMERA will have only one IP address, the wireless IP address should remain the same as wired IP address.

Because the physical MAC address of wireless interface is different from wired interface MAC, there will be conflicts in ARP table that remember the old **wired MAC** bundled with the **IP address** now used by new **wireless MAC**, which will cause trouble to establish new wireless link, it will take longer time to establish wireless link (as long as **3~10 minutes** after **arp table** auto refresh).

Please use **ARP -d** to clear the old data in arp table will help create wireless link

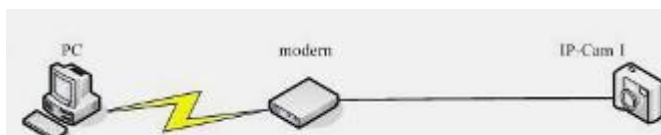
faster.



2.3.8 ADSL Settings

ADSL Settings	
Using ADSL Dialup	<input checked="" type="checkbox"/>
ADSL User	<input type="text"/>
ADSL Password	<input type="text"/>
Report ADSL IP by Mail	<input type="checkbox"/>
<input type="button" value="Submit"/> <input type="button" value="Refresh"/>	

Connect camera LAN port directly to ADSL modem.



Please request User account and Password from your ADSL service provider.

If the IP is not fixed (dynamic), Click "[Report ADSL IP by Mail](#)" will result email notification every time the ADSL IP is changed.

2.3.9 UPnP Settings

UPnP Settings	
Using UPnP to Map Port	<input checked="" type="checkbox"/>
UPnP Status	UPnP Succeed
<input type="button" value="Submit"/> <input type="button" value="Refresh"/>	

Camera will map port to router automatically, if your router UPnP enabled

Please make sure the state is "UPnP succeed".

2.3.10 DDNS Service Setting

DDNS Service Settings	
DDNS Service	DynDns.org(dyndns) ▾
DDNS User	C1002
DDNS Password	●●●●●●●●
DDNS Host	clairvoyant.mine.nu
DDNS Status	Update successfully
Re-Update Ignoring All Errors	<input type="checkbox"/> never do this unless your hostname has been unblocked
<input type="button" value="Submit"/> <input type="button" value="Refresh"/>	

DDNS Setting: IP CAMERA IP camera supports protocols from three DDNS providers:

1. Oray.net
2. Dyndns.org
3. 3322.org

Domain Name: the second-level name you apply for and acquire at Oray.net, Dyndns.org, or 3322.org please read more details in "Reference User's manual"

User and Password: the user name and password when applying for the DDNS service.

DDNS Status:

1. "**No Action**" no DDNS settings set, no action taken.
2. "**Errors in network Communication**": can't access DDNS server due to Network errors (blocked by ISP) or wrong DNS, Gateway settings.
3. "**Update successfully**" : Successfully updated the DDNS server database.

2.3.11 Mail Service Settings

Mail Service Settings	
Sender	camera@domain.eu
Receiver 1	sales@xtendlan.com
Receiver 2	
Receiver 3	
Receiver 4	
SMTP Server	smtp.domain.eu
SMTP Port	25
Need Authentication	<input checked="" type="checkbox"/>
SMTP User	user@domain.eu
SMTP Password	••••••••
	<input type="button" value="Test"/> Please set at first, and then test.
Report Internet IP by Mail	<input checked="" type="checkbox"/>
	<input type="button" value="Submit"/> <input type="button" value="Refresh"/>

The screenshot shows a web browser window with the address bar displaying 'http://192.168.0.206:8206/test_mail.htm'. The browser's address bar and search bar are visible. At the bottom of the browser window, a message box displays 'Test ... Succeed'.

Users can assign the e-mail boxes to receive and send mails. The email box is used for receiving the snapshots sent after alarm, report the public wan IP address after successful PPPoE dial-up.

Note:

Only Alarm Service Settings > Send Mail on Alarm is enabled, the Mail Service will be effective.

Sender is the **full email address** that match with the SMTP authentication, if wrong address input, emails won't send.

Remember to input your **SMTP account and password** if **your SMTP server** requires authentication.

Please ask your ISP for **SMTP account and password**, or seek help from **MIS department of your company**.

Make sure the DNS Server and Gateway settings are correct if you don't choose DHCP and setup "Networking Settings" manually.

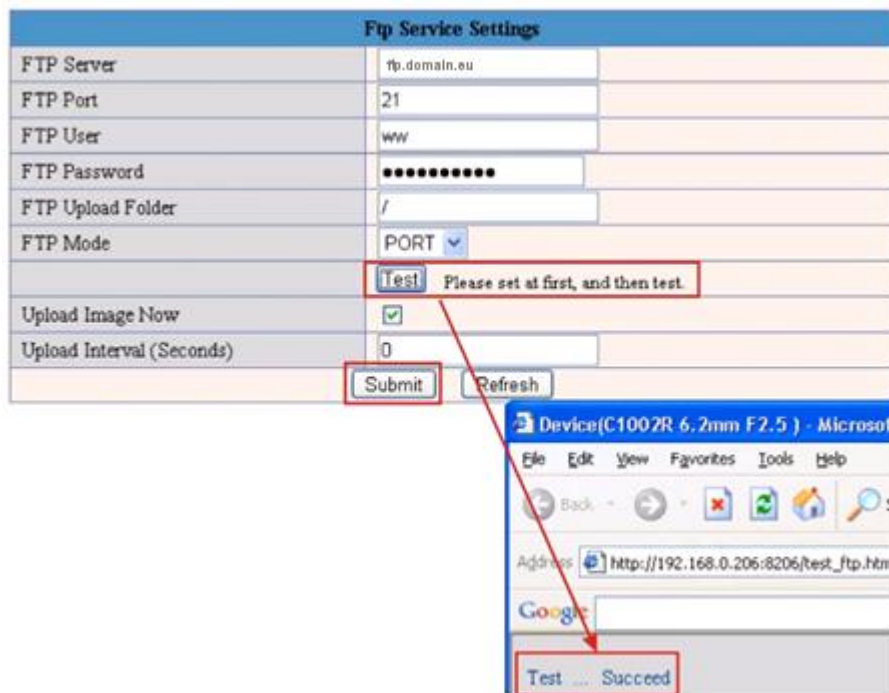
Please check the time stamp in email Subject, looks like "00051DE85111(SZ Office) motion alarm at 20090304175647" means alarm triggered at **2009/03/04 17:56:47 GMT time**, from camera S/N: 00051DE85111; Alias: SZ Office

2.3.12 FTP Service Settings

Note:

**The Upload folder must be created before successful files upload.
Remember to add “/” before folder name**

Don't upload when Interval is zero.



The filename will include the time stamp each snapshot being taken.

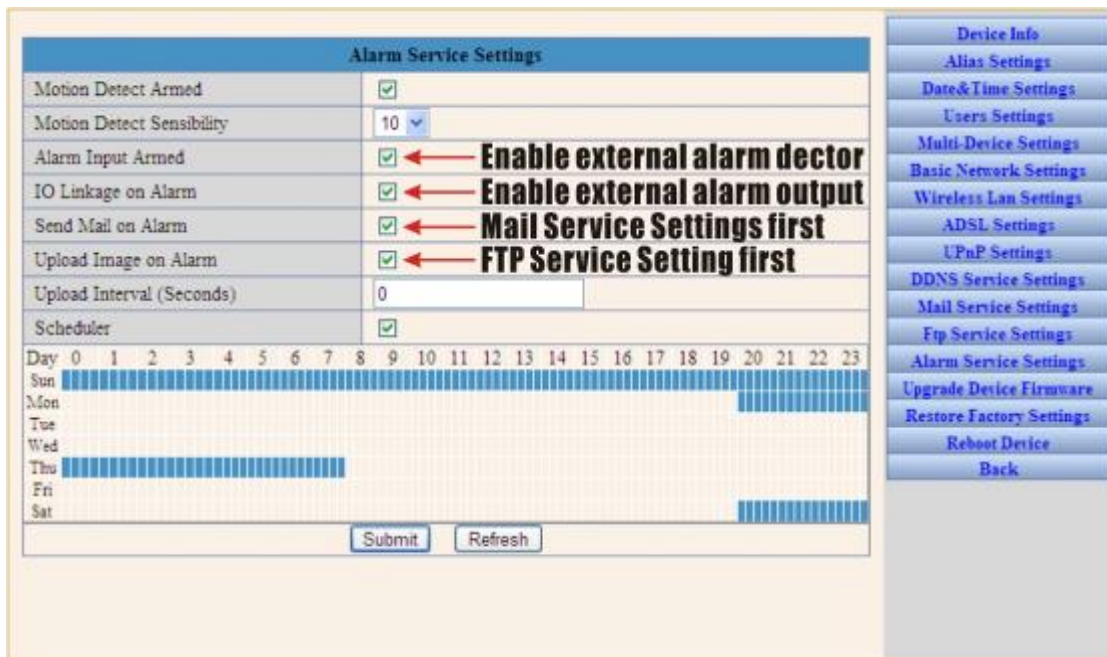
FTP Mode: support standard(POST) mode and passive(PASV) mode.

Note:

Only Alarm Service Settings > Upload Image on Alarm is enabled, the FTP Service will be effective.

Don't upload when Upload Interval is zero.

2.3.13 Alarm Service Settings



Note:

Don't upload when Interval is zero.

IO Linkage will trigger alarm output.

Motion Detect Armed: Motion object will trigger alarm, FTP upload to server will start to send snapshots for one minute, alarm emails will attach 5 snapshots.

IF IE browser windows is active, 1 minute avi recording will be stored in C:\Documents and Settings\All Users\Documents automatically

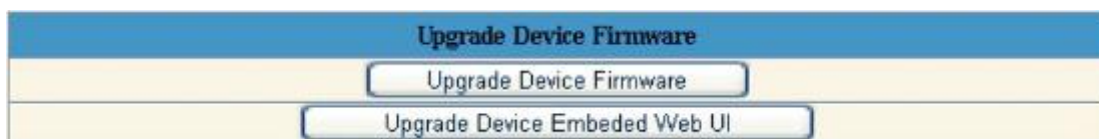
Alarm Input Armed: When the alarm in pins from "NO" to "close" will trigger alarm.

Send Mail on Alarm : Sent alarm email to assigned email box which includes **5 snapshot pictures (one picture per second)**

Upload Image on Alarm : Upload snapshot pictures to pre-assigned FTP server folder.

Scheduler : Alarming schedule, will enable alarm only at defined time frames.

2.3.14 Upgrade Device Firmware



WARNING:

ONLY FOR CERTIFIED TECHNICAL ENGINEERS

Get correct firmware from authorized dealer, wrong version of firmware will damage your camera permanently.

Appendix

A. IP CAMERA Rear Panel



LAN: RJ-45/10-100 Base T
ANT: For Wi-Fi wireless (optional)
DC5V: 5V/1A Power supply (indoor, Wi-Fi)



B. IP CAMERAIR Tail Wire



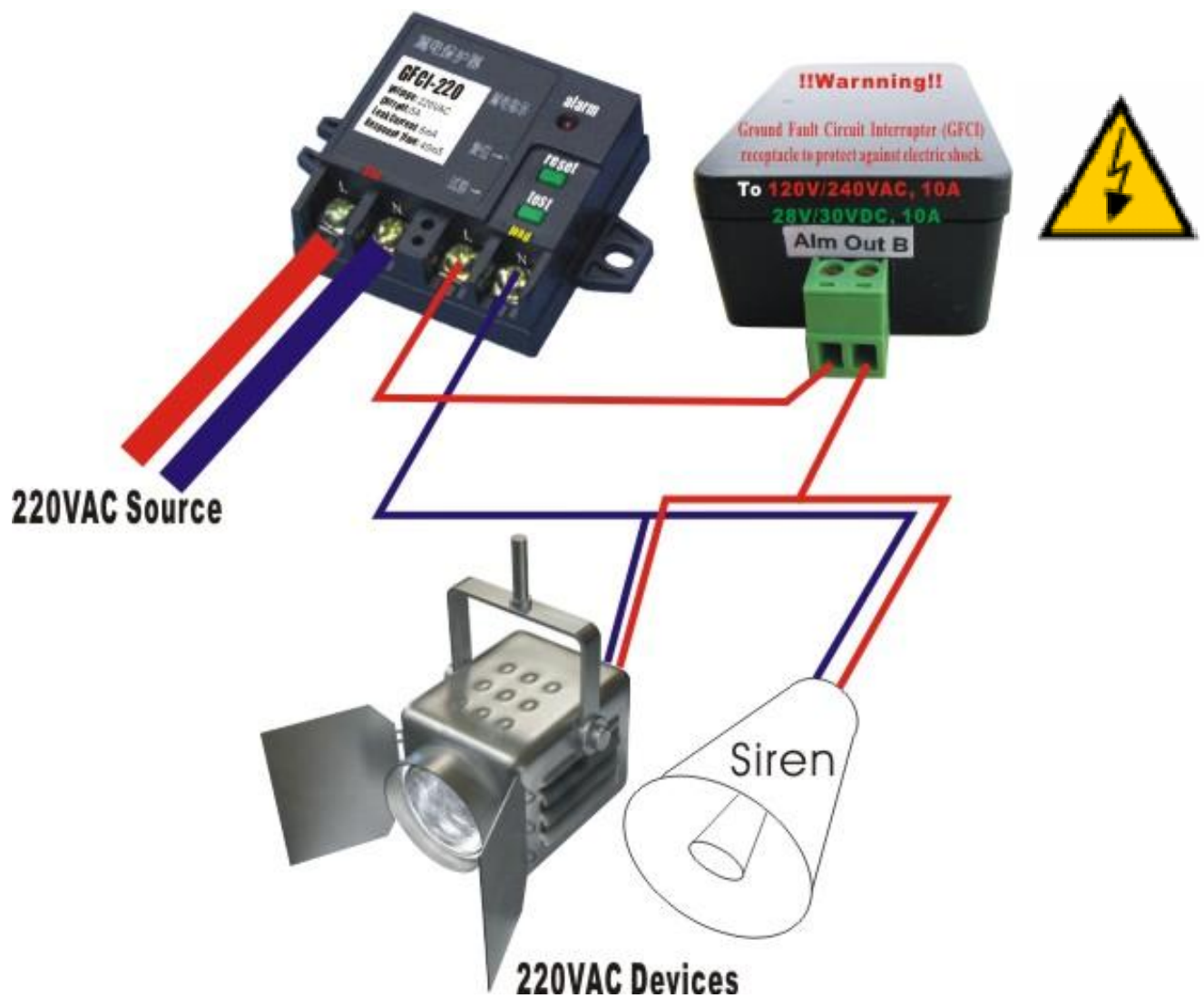
RESET: Restore factory default in case of forgetting password.
ALARM IN: Connect to Sensor/ Detector, Normal Open, will trigger alarm when Short circuit (closed)
DC5V: 5V/1A Power supply (outdoor, IR, Wi-Fi)
ALARM OUT: NO; 1A 24VDC/ 0.5A 125VAC, require external relay box (optional) for higher power alarming devices.
Audio in: -48 dB microphone, or amplified microphone.
Audio Out: 8Ω 1W speaker



To connect the Active Infrared Sensor to IP CAMERAR camera ALARM IN, will trigger alarm when light beams interrupted.



Manually ON/OFF the alarm out



WARNING: If connect higher power loading ($> 1A$) directly to camera alarm out will cause damage the camera.
Higher current ($>0.5A$) will accelerate aging of the relay on camera PCB, external relay box is always recommended to protect the camera.

C. Technical Data

Image System

- Compression: Video; Motion JPEG hardware compression **AUDIO**; ADPCM
- 350,000 pixels CMOS sensor
- **Dynamic Range : 60dB**
- **S/N ratio : 50dB**
- f: 6.0mm to infinity, C/CS mount lens
- Min. 2.0 to 3.0 Lux (Indoor version)
- Min. 0 Lux with IR Leds (Outdoor version)
- Automatic Exposure Control
- Automatic Gain Control
- Automatic Brightness Control
- Automatic White Balance
- Flicker Avoidance (Flicker less)
- Resolution:
 - QVGA (320 x 240)
 - VGA (640 x 480)
- Image Frame Rate:
 - Max. 30 fps at QVGA resolution, average 3 Mbps/sec
 - Max. 30 fps at VGA resolution, average 4 Mbps/sec
- I/O Interface
 - CAT5, RJ-45 x1 (802.3); optional IEEE **802.11g** 2.4GHz Wi-Fi
 - RS-485 for PTZ control (optional)
 - Alarm in : Normal Open
 - Alarm out : 1A 24VDC/ 0.5A 125VAC, require external relay box (optional) for higher power load.
 - Audio in: -48 dB microphone, or amplified microphone.**
 - Audio Out: 8Ω 1W speaker**
- Network Protocols
 - TCP/IP, HTTP, ARP, ICMP, PPPoE, DHCP, SMTP, DDNS, NTP, FTP
- Client
 - IE6 or **Firefox**
- Mechanical & Environment
 - Dimensions (mm, L x H x W):
 - 103 x 46 x 46 (OEM indoor version)
 - 160 x 80 x 75 (Outdoor version)
 - Weight (g): 350 / 700 (Indoor/ Outdoor)
- Power Requirement: 5 V / 0.3A (Indoor version) / 5 V / 1A (Outdoor version)
- Operation Temp: 5 °C to 50 °C (40 °F to 122 °F)
- Humidity: Rh10 % to 90 %

Mechanical (ICA30X only)

- PAN : 355°
- TILT : 90°

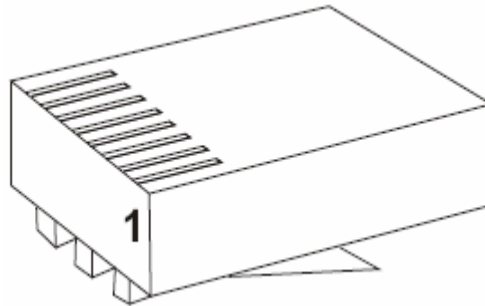
Remark:

- Optional Digital FTP alarm, scheduling, NFS storage functions
- Optional Alarm inputs and outputs, Power over Ethernet, Wi-Fi wireless
- Optional DVR client software for 16 cameras monitoring.
- OEM UPnP and firewall penetration, installation free solution available.

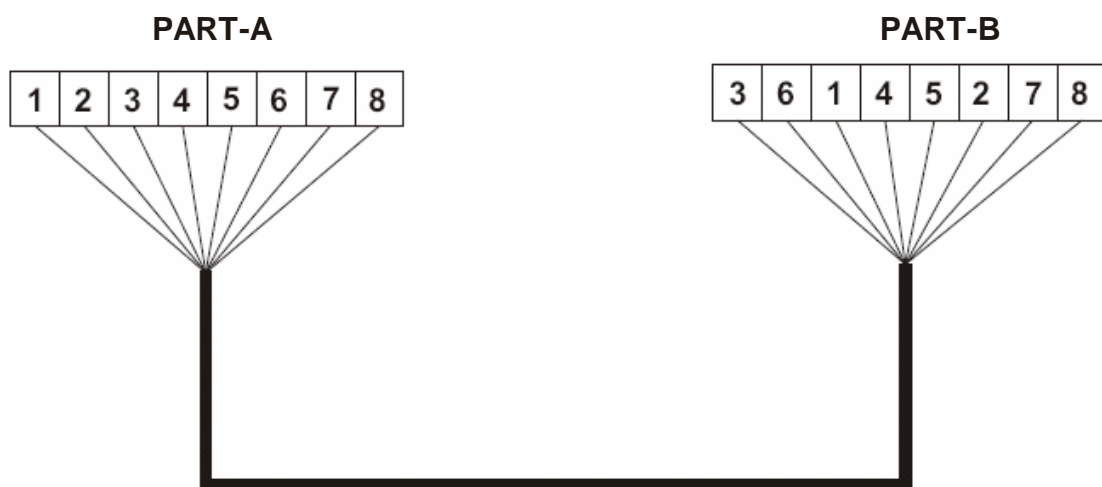
D. Cross Ethernet Cable Making Tip

I. LAN Plug

Pin: 1 ~ 8

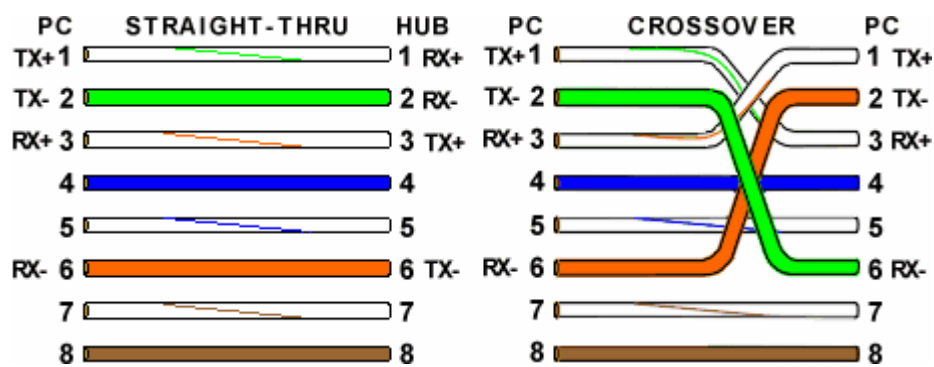


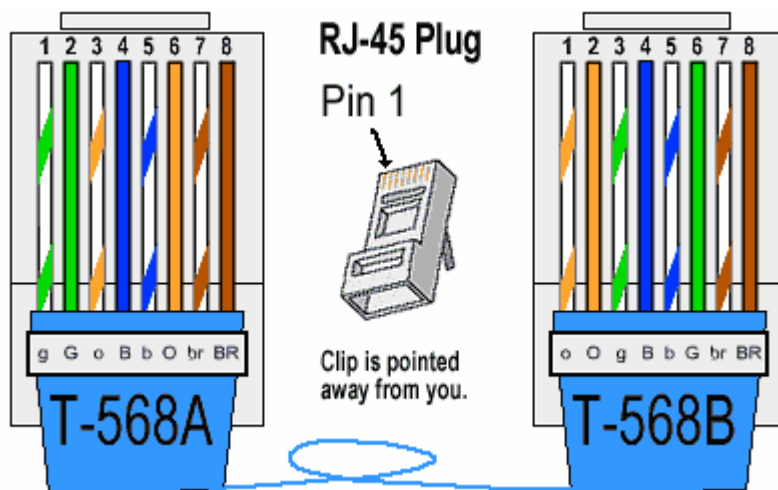
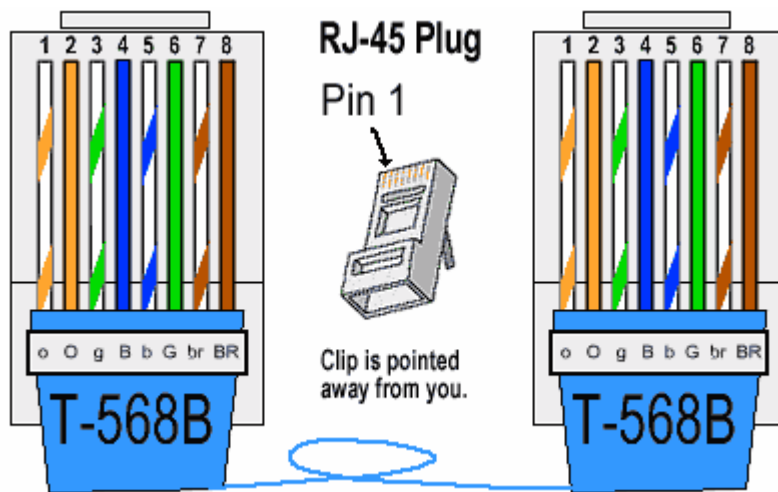
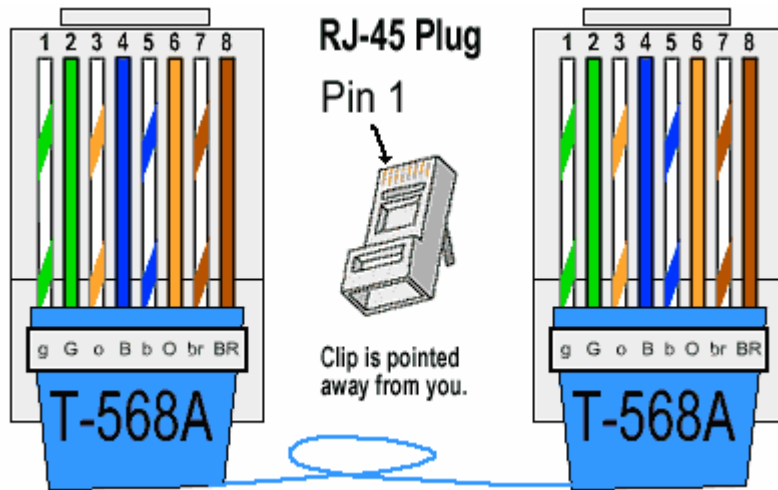
II. LAN Cable



III. Connection Method

- Connect LAN Cable Part-A and LAN plug by order as one to one .
- Connect to LAN cable Part-B & Part-A, Replace order No.1 & 3, No.2 & 6.
- Connect LAN cable Part-B No. 3 to LAN plug No. 1 and connect the next by order.



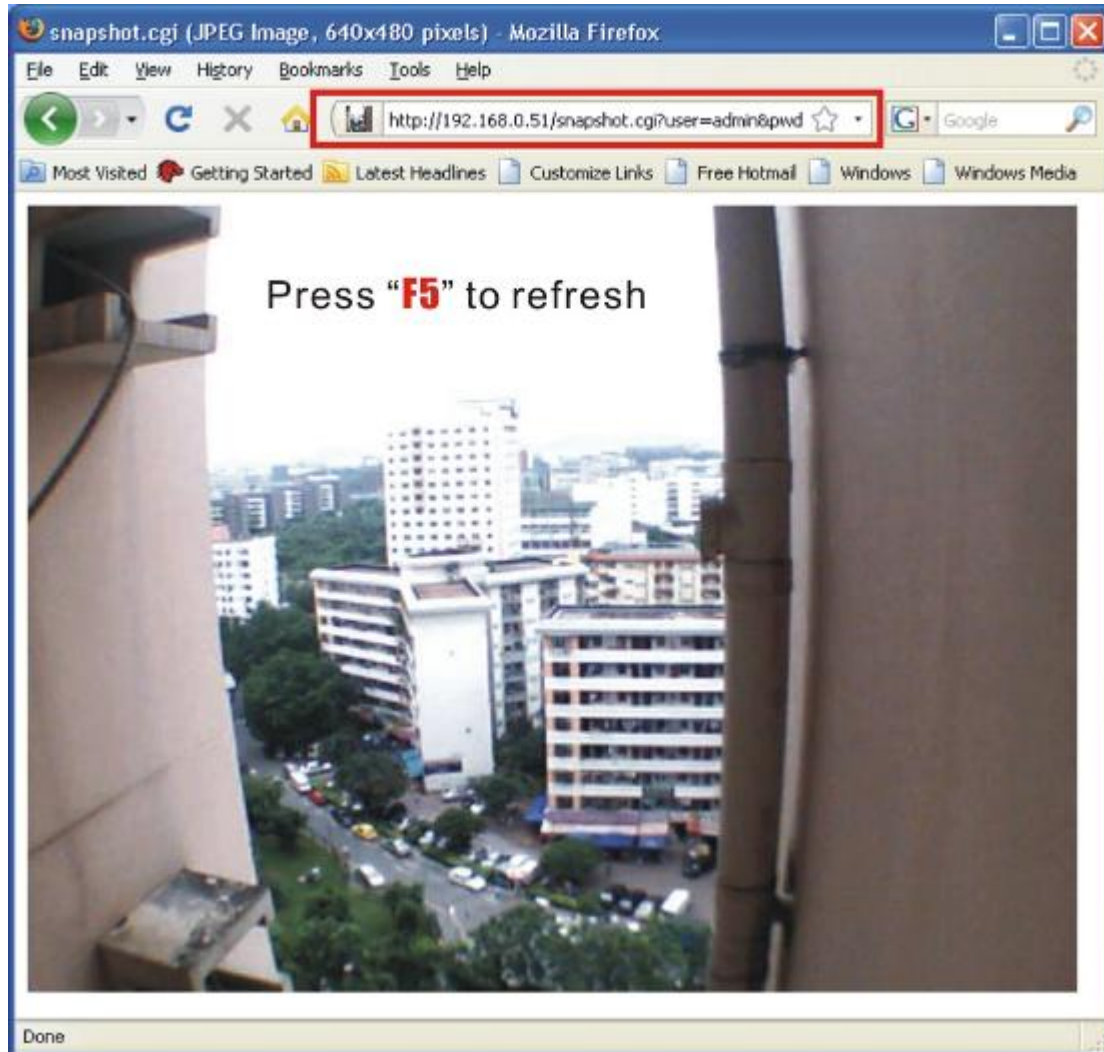


E. Snapshots / Server Push / Smart phones

I.Snapshot:

<http://IPCAMERA-IP-address:port/snapshot.cgi?user=admin&pwd=>

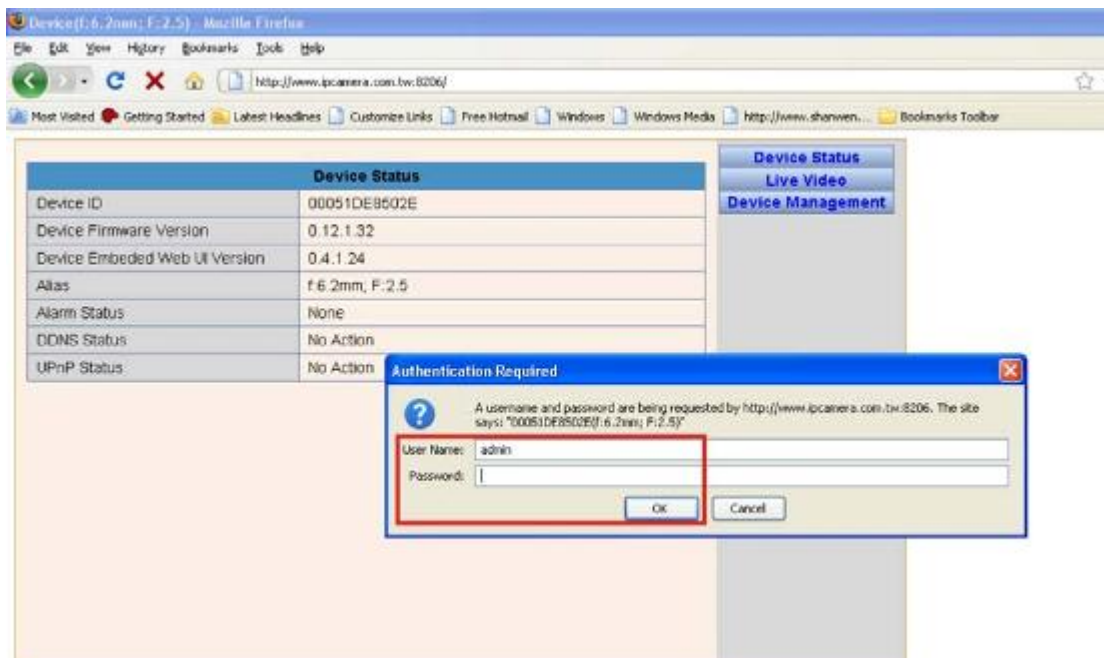
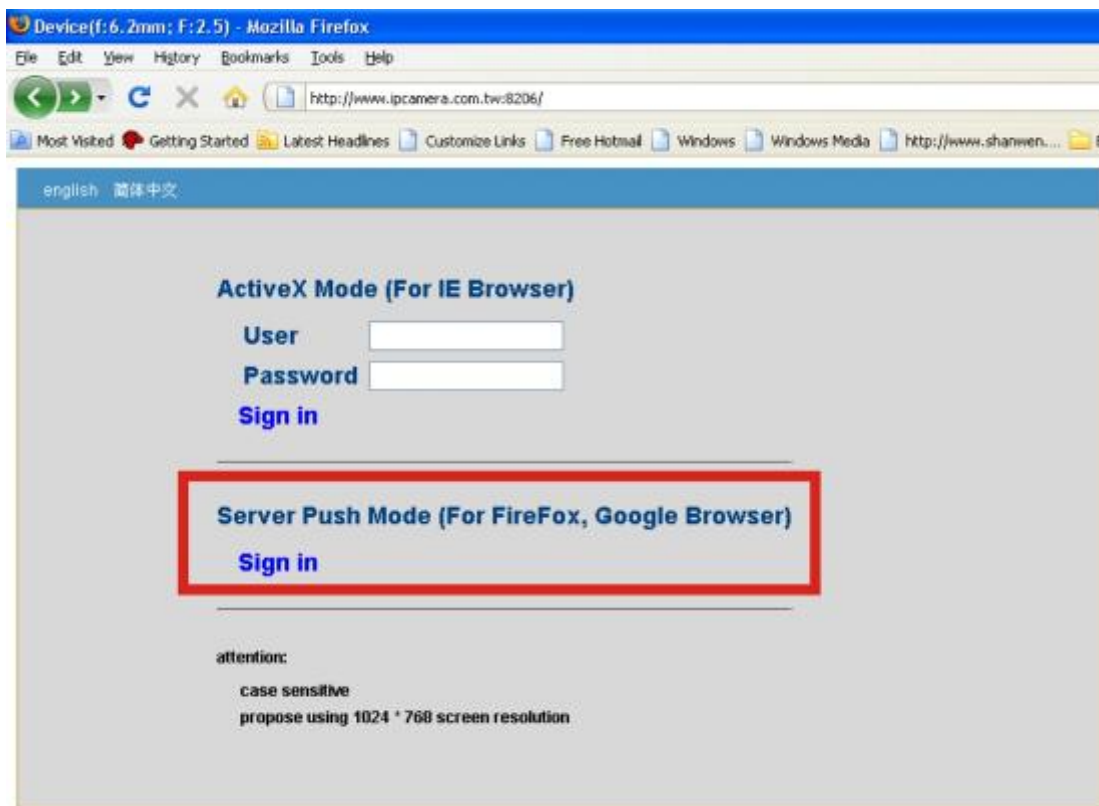
Just type the snapshot http commands to IE browser address field, you will get real time snapshot immediately, press F5 key will refresh the new snapshot.



`admin` is the IP CAMERA username, password is blank.

II. Firefox (Server Push):

[http:// IP CAMERA-IP-address:port/videostream.cgi?user=admin&pwd=](http://IP_CAMERA-IP-address:port/videostream.cgi?user=admin&pwd=)



admin is the IP CAMERA username, password is blank.

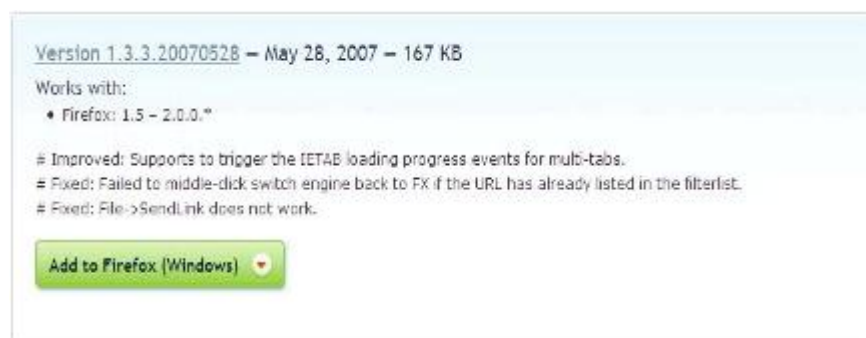


Due to the security concerns, the firefox explorer doesn't support ActiveX controls by default, but we can add a plug-in named "IE-Tab" which will add ActiveX controls support to firefox, you can download the "IE-Tab" with the firefox explorer from below link:

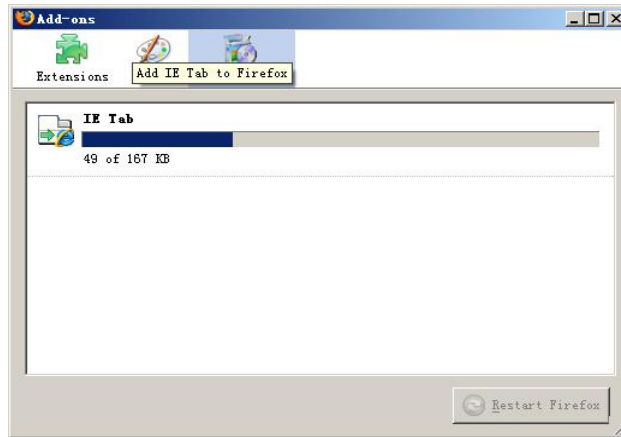
<https://addons.mozilla.org/en-US/firefox/addon/1419>

On the download page, select the right version for your browser, download it, then start the installation.

To take firefox browser version 2.0.0.18 as example to illustrate the procedures. Select the version shown in the chart below



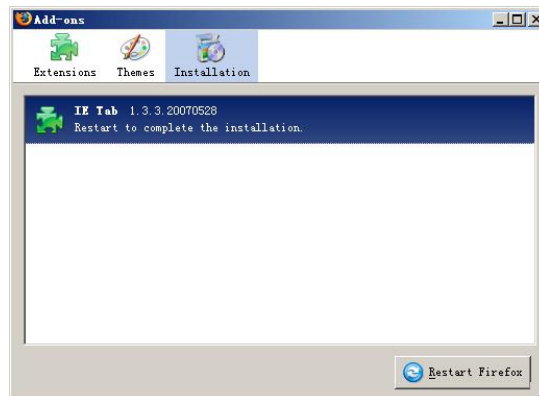
Click "Add to Firefox (Windows)" to start download



After download complete, a dialog box will popup



Click “Install Now” button to start installation



After installation, click “Restart Firefox” button to restart the browser.

Login your camera and locate the monitoring page, click your mouse’s right button, click the new menu item named View page in IE-Tab to login device again.

III. To play on MPlayer, VLC media player, Coreplayer (Smart Phones)

Syntax

<http://user:pwd@host:port/videostream.asf>

<http://user:pwd@host:port/videostream.cgi>

or

<http://host:port/videostream.asf?user=&pwd=>

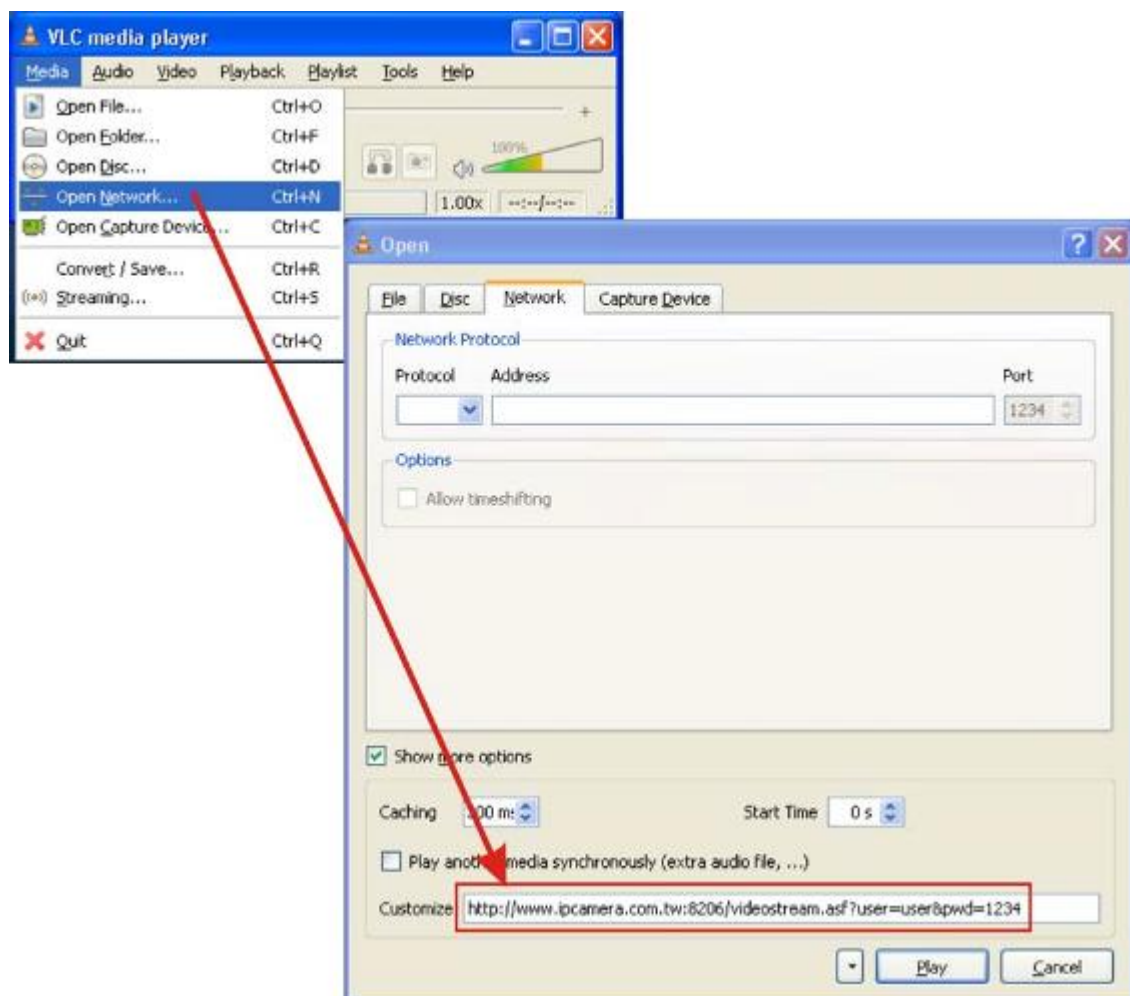
<http://host:port/videostream.cgi?user=&pwd=>

Example

[http:// IP CAMERA_IP_Address:port /videostream.asf?user=admin&pwd=](http://IP_CAMERA_IP_Address:port /videostream.asf?user=admin&pwd=)

<http://www.ipcamera.com.tw:8206/videostream.asf?user=user&pwd=1234>

<http://www.ipcamera.com.tw:8206/videostream.cgi?user=user&pwd=1234>





Play video stream on Linux:



IV. Install XtendLan IP Camera Player on Smart Phones

The XtendLan IP Camera Player in CD will run on mobile phones/pda that support midp2.0 java.

Note:

Many mobile devices (Pocket PCs, Cellular phones) using Microsoft mobile OS does not contain JRE (J2ME) will not be able to run Java applications or view websites powered by Java applets. Major GPRS/CDMA/3G mobile phones using various J2ME provided by companies like Applix (Japan), Esmertec (Swiss), TAO (UK)..., even though there are standards like MIDP 1.0/ 2.0, difference still exist in all the J2ME versions from different vendors.

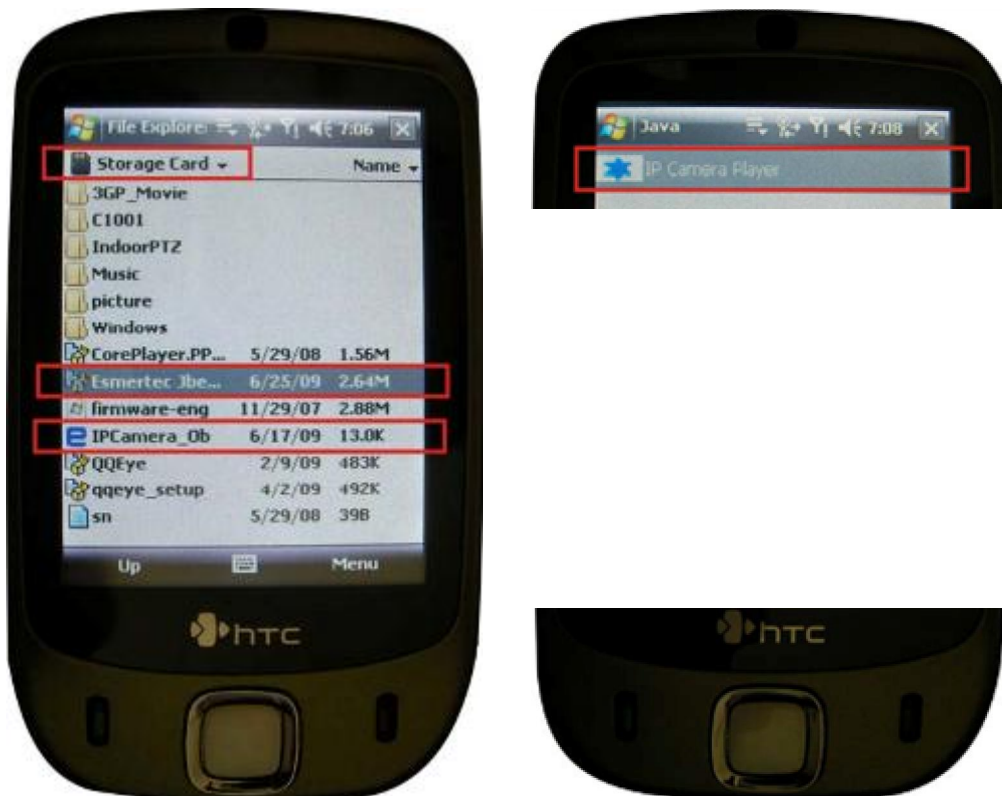
XtendLan IP Camera Player for PDA (J2ME, CLDC; PDAP) or Phone (J2ME, CLDC; MIDP) are different, will not be interchangeable. Since there are too many mobile phones available in market, we are not able to guarantee that the XtendLan IP Camera Player we provide will work on all mobile phones, or guarantee 100% compatibility to all GPRS/3G mobile phones that support MIDP 2.0 (Mobile Information Device Profile).

Java Run Environment (JRE; J2ME) for Microsoft mobile OS is included in product CD: [Esmertec Jbed 20090217.5.1R2.cab](#)

XtendLan IP Camera Player is coded in Java, will need to install Java Virtual machine (JVM) on your Phone/ PDA before running Java applets.

Copy [Esmertec Jbed 20090217.5.1R2.cab](#) to Microsoft mobile phone's storage (by TF card, micro SD card, USB link), click to install.

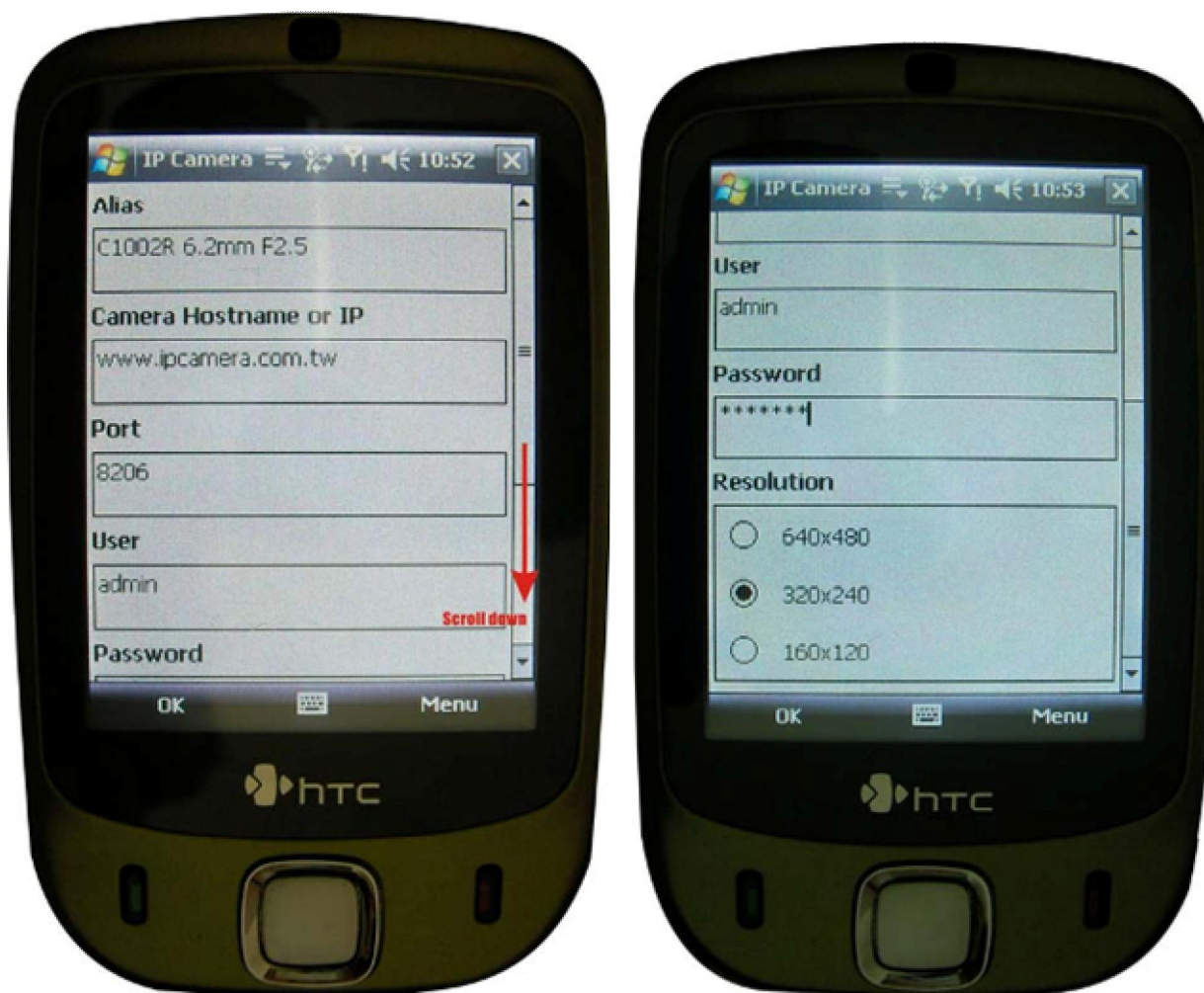
Copy [IPCamera_Obj.jar](#) to phone's storage (by TF card, micro SD card, USB link), click to install.



Make sure the mobile phone can access XtendLan ICA30x series IP camera through Internet or Wi-Fi. Click Lunch to start XtendLan IP Camera Player

Note:

Many telecomm ISP will separate their service to WAP (Intranet) & Internet; please must set APN that connect Internet service.



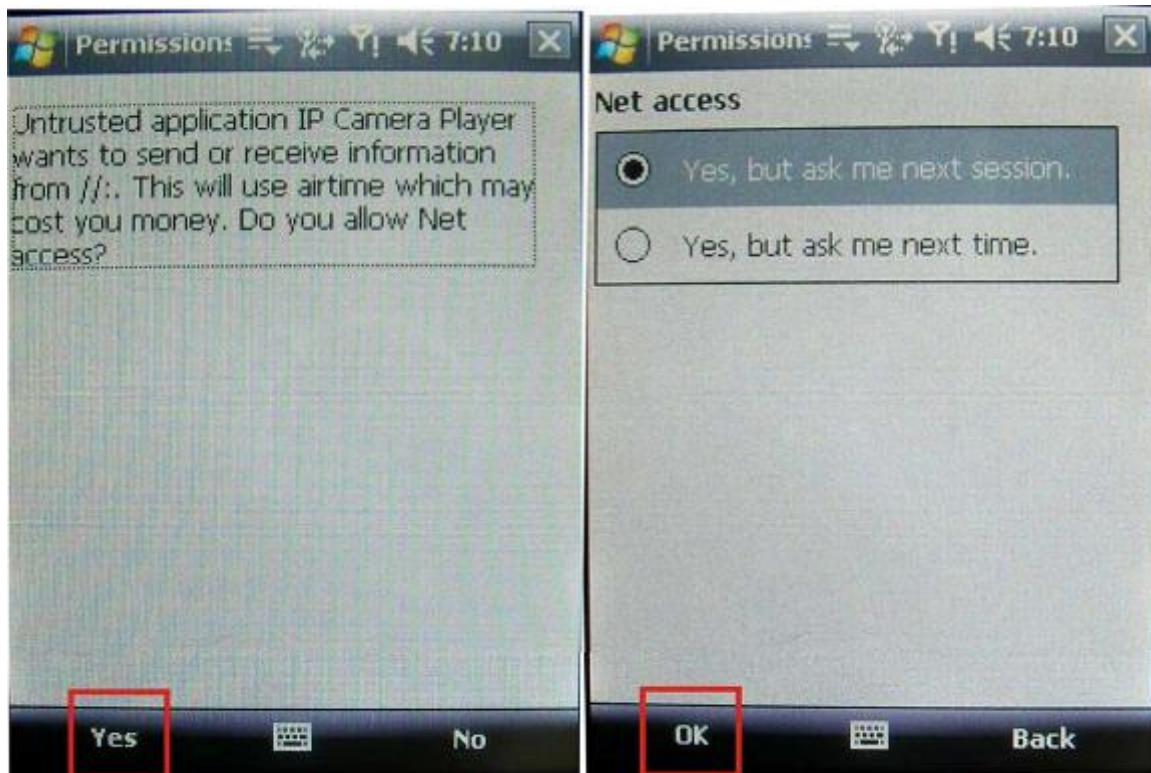
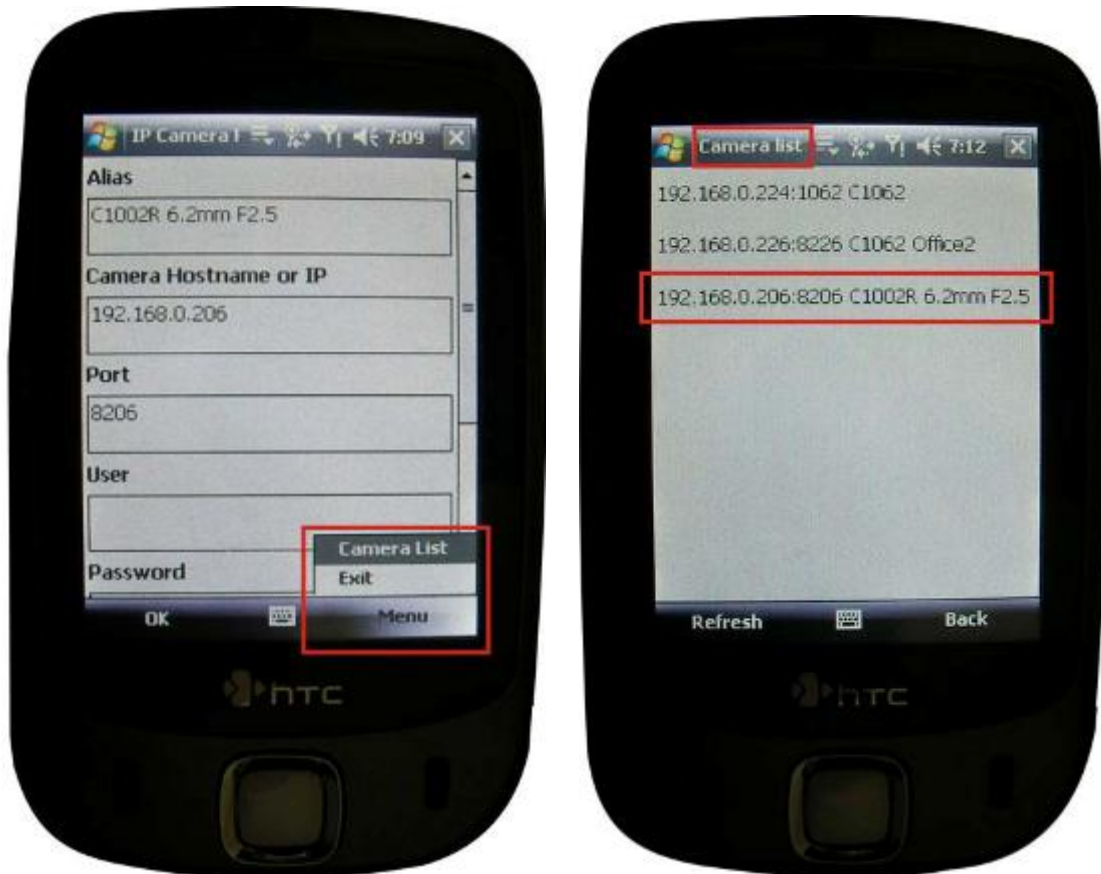
Input the camera URL, User/Password, Selection Resolution to choose ok to access XtendLan IP camera

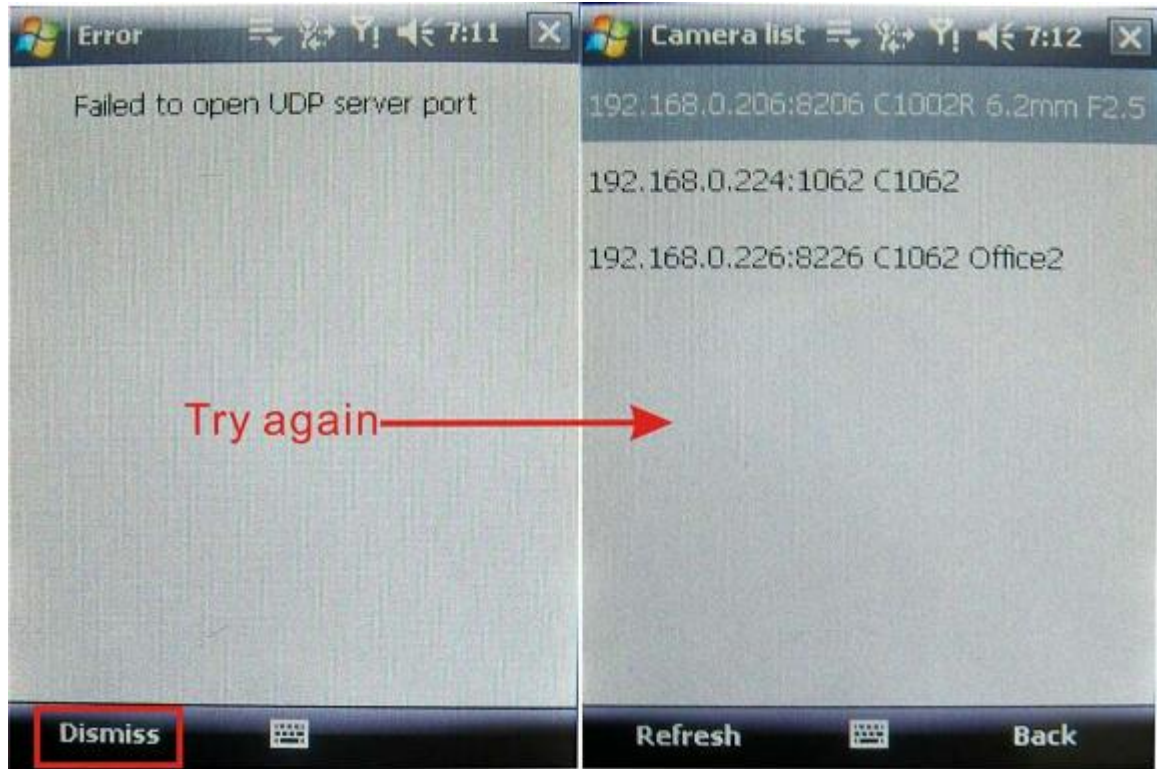
To control ICA30X IP Camera PAN & TILT

Use 2 4 6 8 keys to control PAN/ TILT (up down left right).

Use 1 3 5 7 keys to control PAN Scan/Stop ; TILT Scan/Stop.

If connect phones by Wi-Fi can search XtendLan ICA30x series IP cameras in LAN.





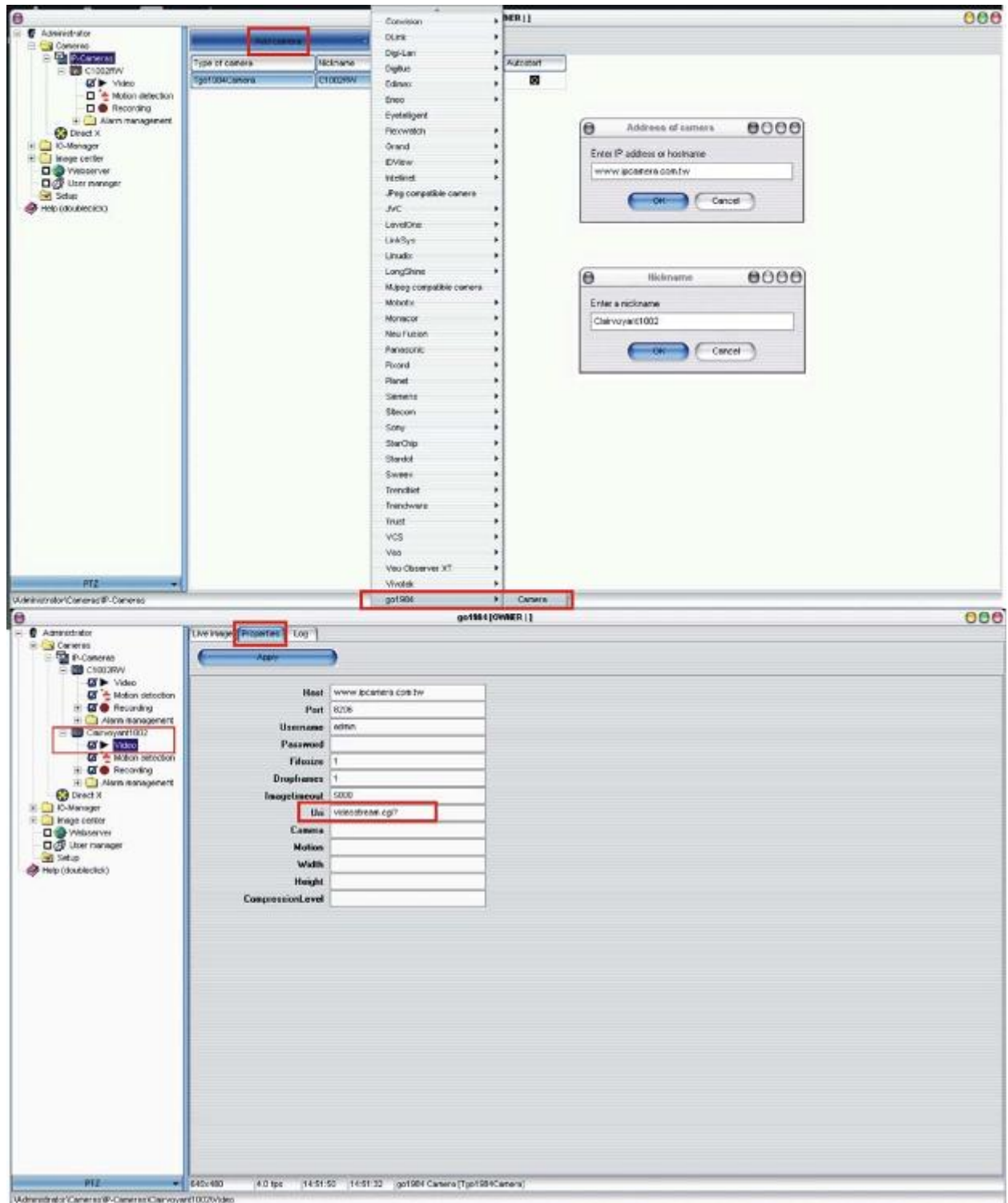
F. 3rd Party Video surveillance and Recording Software

I.go1984

Copyright © Logiware GmbH (<http://www.go1984.com>)

IP CAMERA Settings:

Uri : videostream.cgi



=====*The End*=====

