

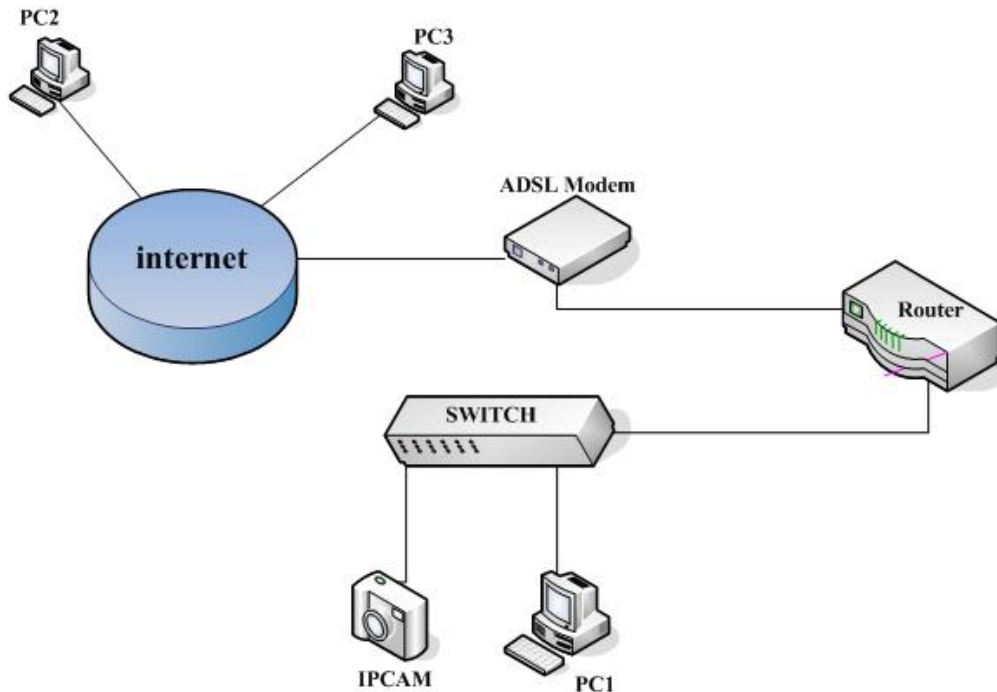
SuperIPCam Users Manual

(Applied to Q serial IPCamera)

一、 Instructions

Before using SuperIPCam, please refer to specific manual for detailed instructions in CD. The IPCamera belongs to Q series IPCamera. This text will tell you how to use the SuperIPCam to watch its video.

二、 Connection to Network and Configuration



Connection of IPCamera and Network: Before using SuperIPCam, connect IPCamera to net. You can connect the IP camera into LAN, or connect into LAN then to the internet by ADSL Modem. Please refer to the chart above.

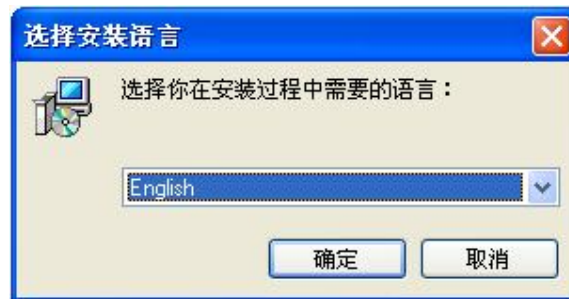
Note: Connect IPCamera to the internet strictly according the chart above. If the net is small, the switch can be cancelled. If connect IPCamera into the LAN through multi-layer router, then connect the LAN to the internet, IPCamera can't be visited from internet.

Configuration of IPCamera: In order that PC2 and PC3 can visit IPCamera, need to set the IP Address and port of the IPCamera in LAN, and do mapping on the router according to the IP Address and port.

Note: For more information, Please refer the specific manual.

三、 The Installation of software SuperIPCam

Double click the SuperIPCam icon, choose installation language, English or Chinese.

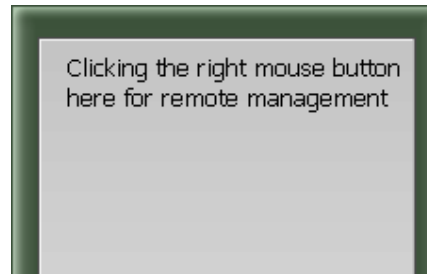


Click "OK", follow instructions to finish the installation.

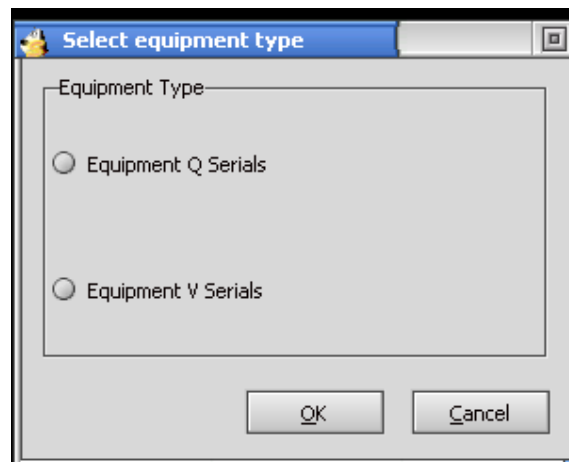
Run this software, you will see a window as below.



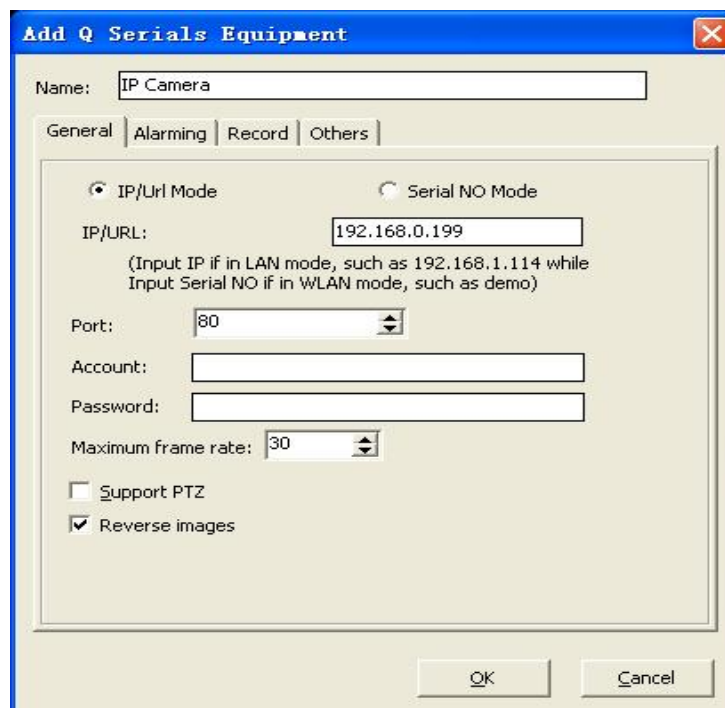
四、 Add an IPCamera



Right-click the mouse in the area showed above, a dialogue box will come up as below.

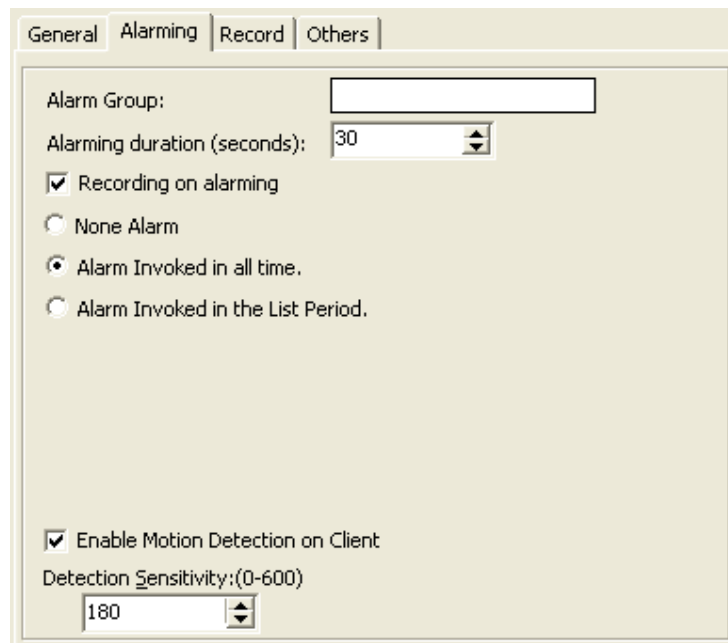


Choose Q serial, click “OK”, the IPCamera setting page will come up as below.



If select IP/URL mode, input the IP address or the URL of the IPCamera (Note: Before inputting URL, make sure the IPCamera has accessed to the Internet, and set the right third party DDNS in IPCamera). Fill in username and password for visiting IPCamera, see the above picture (Note, The username and password have been set in the QTools in the area of Authorization Login).

You can also set other functions like “Alarm”, “Record” For Record, MPEG-4 format is recommended, it supports long time recording and saves space. Due to the Q serial can’t support moving detection, SuperIPCam can fulfill this function, but need to select “Enable Motion Detection on Client” on Alarm setting page. See below:



The screenshot shows the 'Alarming' tab of a configuration window. It contains the following settings:

- Alarm Group:** An empty text input field.
- Alarming duration (seconds):** A spinner box set to 30.
- Recording on alarming:** A checked checkbox.
- Alarm options:** Three radio buttons: 'None Alarm' (unselected), 'Alarm Invoked in all time.' (selected), and 'Alarm Invoked in the List Period.' (unselected).
- Enable Motion Detection on Client:** A checked checkbox.
- Detection Sensitivity:(0-600):** A spinner box set to 180.

If selecting “Serial Number mode”, just input the serial Number which is assigned by the manufacturer (Note: make sure the IPCamera has accessed to the internet, Serial Number and URL were filled in the IPCamera, users can see the Serial Number by QTools or the label on the IPCamera). See below.

General | Alarming | Record | Others

☐ IP/Url Mode ☒ Serial NO Mode

Serial NO:

(Input IP if in LAN mode, such as 192.168.1.114 while
Input Serial NO if in WLAN mode, such as demo)

Account:

Password:

Maximum frame rate:

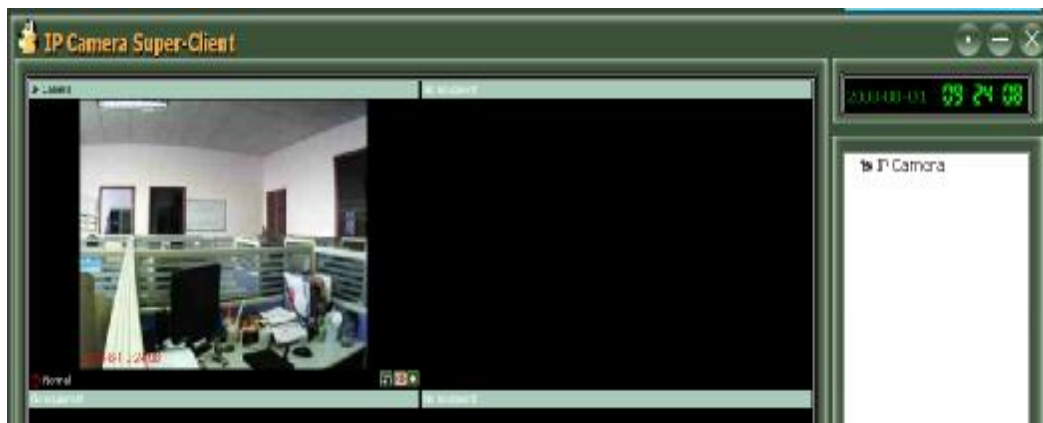
☐ Support PTZ

☒ Reverse images

☒ TCP mode for getting data

Note: “TCP mode for getting data”. If not Checked, when more than 1 user is visiting the IPCamera simultaneously, User end might request data from other users so as to reduce the work load of the IPCamera. But this might make the data stream not stable. Users make their choice.

Finish setup, click “OK”, The IPCamera will show up in the software. Double click IPCamera to start visiting.



五、 Operation of the active window

Click one of the windows to make it active



Right click within the window, an operation menu will come up. Or click one of the three buttons at the lower right corner to setup snapshot, alarm, or video record.

Remote control the Pan/Tilt to move the IPCamera UP, DOWN, RIGHT, LEFT, or make it Auto Scan. Please refer to the below picture.

(Note: If the Equipment do not support Pan/Tilt, the buttons are useless)

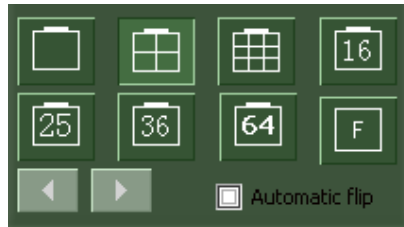


For Q series IPCamera, the buttons showed below is not available, please ignore it.



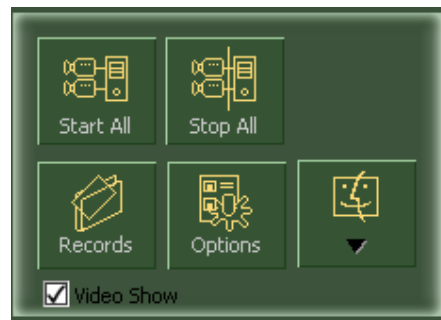
The 3 buttons showed above are shortcut operations to Start, Quit, and Setup.

六、 Multi View



Choose multi view style according to your needs. For example: 1、 4、 9、 15、 25、 64 frames etc. Turn the page if viewing too many IPCamera.

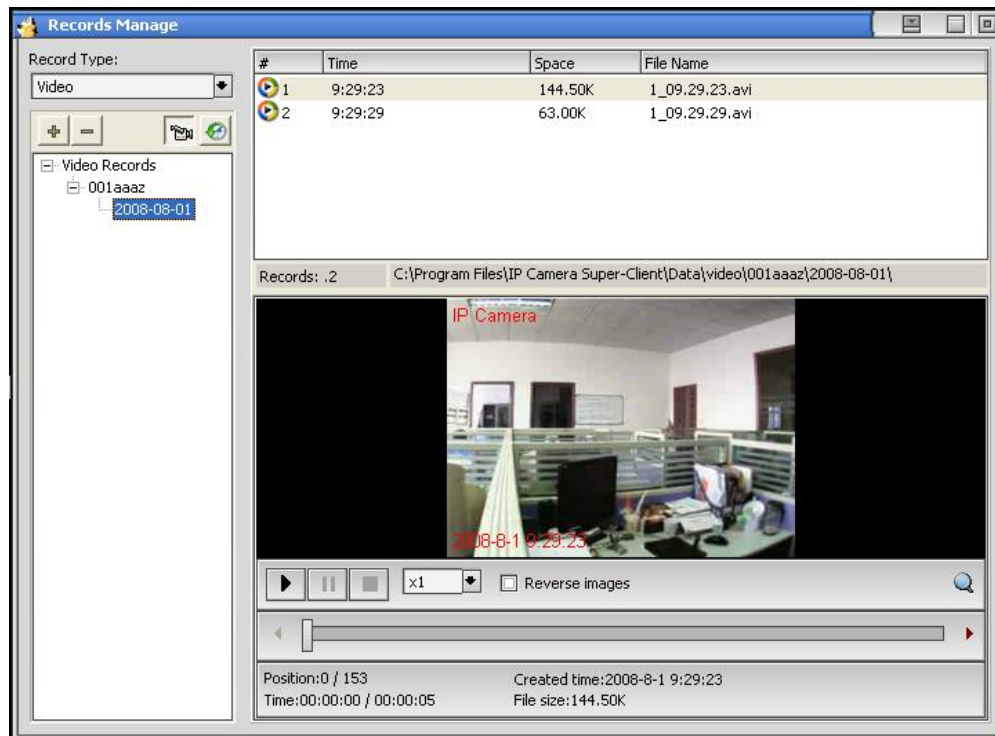
七、 System Operation



The pictures showed above is System Operation window, click “start all”, all IPCameras will start to work, click “Stop All”, all IPCameras will stop.

1. View History Record

Click “Records”, a dialogue box will come up, then users can view the history records

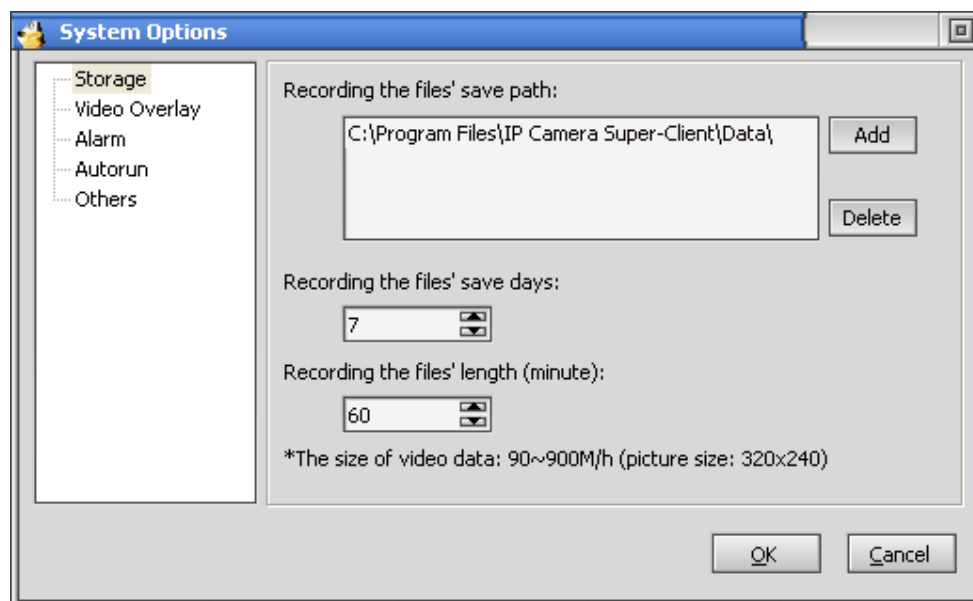


There are two methods of Recording, “Planned Recording” and “Alarm Triggered Recording”, Setup to Alarm and Record function accordingly.

In this dialogue box, Users can also review the recorded video. The video is recorded in the standard coding of MPEG4 or MJPEG, Users can play it through the normal media players.

2. System Setting

Click “System Setting”, a dialogue box will come up, setup the User-end software.



- ü In the “Storage” menu, Click “add” or “Delete”, choose save path for recording. Set “save days”, Expired record will be automatically deleted to save storage space; Set “Recording the file’s length”, it will record block after block within default time span. Keep files in a proper size to make index convenient.
- ü In the “Display” menu, choose to display “Equipment Name” or “Time” on the window or not.
- ü In the “Alarm” menu, need to select “send alarm information to the port of TCP and UDP 30000” at User’s end. It is effective by Q Serial Equipment.
- ü In the “Auto run” menu, choose whether to run the user-end software automatically and connect all the monitoring IPCameras.
- ü In the ‘Others’ menu, choose to set DDNS address (Default address: *server.nwsvr.com*, please don’t change). In the multi-view mode, Users can set automatic page-turning intervals”. Users can also choose “Cache mode” to improve video stability.

3. Others



Click “Other” at lower right corner, Users can view Equipment List, manage Log and Operator. In the “About” menu, Users can check software version number and New version availability to download.