



XL-PBW224CW

Coaxial Integrated Access System

V1.0

Statement

All rights reserved

By the written permission of the Company and no unit or individual will be allowed to extract the contents of this book to copy some or all of any form is not able to disseminate

As the product version upgrades or other reasons for the content of this manual will be updated from time to time unless otherwise agreed by the parties to use this manual only as a guide. The manual recommends that all statements of information and does not constitute any express or implied guarantees.

Safety Notice

1. Please use the product specified power supply. If special circumstances need to use other vendors to provide the power supply, make sure that provide voltage and current in line with the provisions of this product, at the same time recommend the use of certified products through the security, otherwise, may result in fire or electric shock. In using this product, do not damage the power cord to forcibly distorted, stretching Pull and banding, and they must not be under heavy pressure in the folder in goods between or, otherwise, may result in the power cord is damaged, resulting in fire or electric shock.
2. In the use of the former make sure that the environment of temperature and humidity in accordance with the products required. (Since the air-conditioned room to move this product to the natural temperature may cause the product surface or internal components have condensed water vapor, please be the product of natural dry before using the power to open.)
3. Non-technical service personnel not to demolish or repair, or repair or failure may be caused by improper electric shock, fire and so on, resulting in injuries, but also result in failure of your product warranty.
4. Do not use fingers, pin, wire and other metal items, foreign bodies into the air vents and cracks inside. May result in current through the metal or foreign body, causing an electric shock and lead to injury, if the body down into the foreign body or a similar object should be to stop using.
5. Do not be packed in plastic bags discarded or stored in places where young children get to be that if young children in their trap the head, nose and mouth may occur the Department of obstruction, which led to suffocation.
6. Please follow the instructions of the manual method of use, it could result in damage to this product.

Contents

1 Welcome to coax XL-PBW224CW Integrated Access System	1
1.1 Recognizing XL-PBW224CW_	1
1.2 XL-PBW224CW System Products	1
1.2.1XL-PB224C Terminal Products	2
Appearance of the products	2
1.1.2 Indicator	3
1.1.3 Ports	3
2 Connection	5
2.1Connect power and network	5
2.1.1 Connect network	5
2.1.2 Connect Power	6
3XL-PB224C Information Interface	7
3.1Login Page	7
3.2 Bridge Page	8
3.2.1 Basic System Introduction	8
3.2.2 Bridge Systems to send and receive data packets statistics	9
3.2.3 IP Address distribution	9
3.3PLC Page	10
3.3.1 PLC The basic configuration system information	10
3.3.2 PLC System Equipment style	11
3.3.3 PLC Flow Control Systems and Equipment	11
3.3.4 PLC Systems to send and receive data packets statistics	12
3.4 Ethernet Page	13
3.4.1 Ethernet link layer information	13
3.4.2 Ethernet Systems to send and receive data packets statistics	13
3.4.3 Ethernet Flow Control Systems and Equipment	13
3.5 Software Page	14
3.5.1 Current software version information	15
3.5.2 Delete procedures	15
3.5.3 Upload upgrade procedures	16
3.5.4 Change Keywords	16
3.6VLAN Page	17
4 Attachment	18
4.1Specification	18
4.1.1 Products specification	18

4.1.2	Environmental Characteristics	18
4.1.3	Application Characteristics	18
4.1.4	Manage and Maintain	19
4.1.5	Adjust Technology	19
4.1.6	Instruction and ports	19
4.2	Frequently Questions answer	

1. Welcome to coax XL-PBW224CW Integrated Access System

1.1 Recognizing XL-PBW224CW

Today's cable networks in households, by telephone twisted pair, power lines and the most common CATV coaxial cable. Also among the coaxial cable which, with its large bandwidth, shielding is good, the high rate of households, business is rich in resources and become an ideal medium for broadband Internet access. However, the existing CATV HFC network is a one-way broadcast, in the rapid development of technology and the demand today, as digital television, digital voice, online games, IPTV and other emerging business and promotion, the user demand for bandwidth keeps to climb, one-way broadcast networks can not meet the new business requirements, upgrading the network will be inevitable. XL-PBW224CW in the existing HFC network based on the construction of a residential area to meet the multi-user (MDU) to use a new type of coaxial cable Integrated Access Ethernet access technology. Its working principle is to use existing coaxial cable network, in its RF spectrum to add Ethernet data channels, without prejudice to the normal work of the existing CATV system, not to the existing network of large-scale changes, the Data CATV signal and the signal with the original transmission, for carrying IP-based data, voice and video and other multimedia services. The transformation of the less cost and engineering will be the original one-way CATV network into a two-way, digital, and can carry multimedia broadband networking platform.

Its advantages in

- the need to upgrade the current coaxial network
 - no need to re-erection of the new cable to the user's home
 - able to provide the same coaxial port RF video signals and Ethernet business
 - rapid establishment of a two-way interactive TV business communications reverse transmission channel
 - Support for VoIP and IPTV and other IP service access network for data transmission
- XL-PBW224CW system to bring in the enjoyment of your video / data multiple experience before you recognize your system XL-PBW224CW.

1.2 XL-PBW224CW system products

XL-PBW224CW system includes headend equipment and terminal equipment. Its powerful network carrying capacity makes a head-end equipment to support 31 or 63 or even

127 * terminal equipment business. Their applications are as follows topology

*: The actual load with a concrete model version shall prevail

1.1.1 XL-PBW224CW End Products

Appearance



1.1.2 Indicator

Item	Meaning	Description
POWER	Power Indicator	Light Always have electricity, you can start using the XL-PBW224CW.
System	System Indicator	The system to start successfully.
Data	Data Indicator	Successfully connected to the network. Flicker:There are data transmission
Ethernet	LAN network Interface Indicator	LAN port connected to the network. Flicker: There are data transmission.

1.1.3 Ports



Item	Meaning	Description
POWER	Power port	Input:100V~265V
Ethernet	Network Port	10/100M Adaptive connected computer
RF IN	TV Signal port	Connect TV Signal
RF+DATA OUT	Synthesis of signal output	Connect terminal equipment

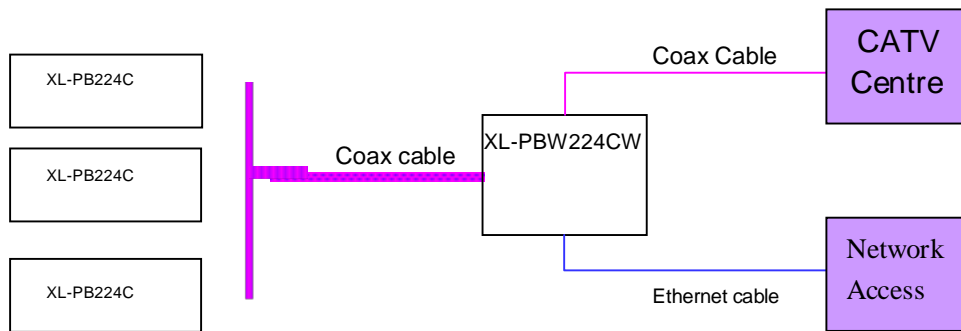
XL-PB224C terminal equipment connected diagram as shown above, insert the power supply before you carefully read the manual on the "safe Notes. "

2 Connection

Before you begin using XL-PB224C before the installation of the following:

2.1 Connect power and network

2.1.1 Connect network



2.1.2 Connect the power

1. In this step, please confirm your power connector and the power outlet XL-PBW224CW line voltage and current at the same time is also in line with XL-PBW224CW work.

2. The exchange received a power outlet plugs, XL-PBW224CW to boot.

3. Boot after the POWER indicator light, about 10 seconds after the System indicator will begin to flicker, the system began to self-test, and then after about 10 seconds, such as monitoring systems are completed and normal, System indicator will Always.

4. At this point in accordance with the network if you have completed these steps, both through the terminal equipment (XL-PB224C) watching television or surfing the Internet.

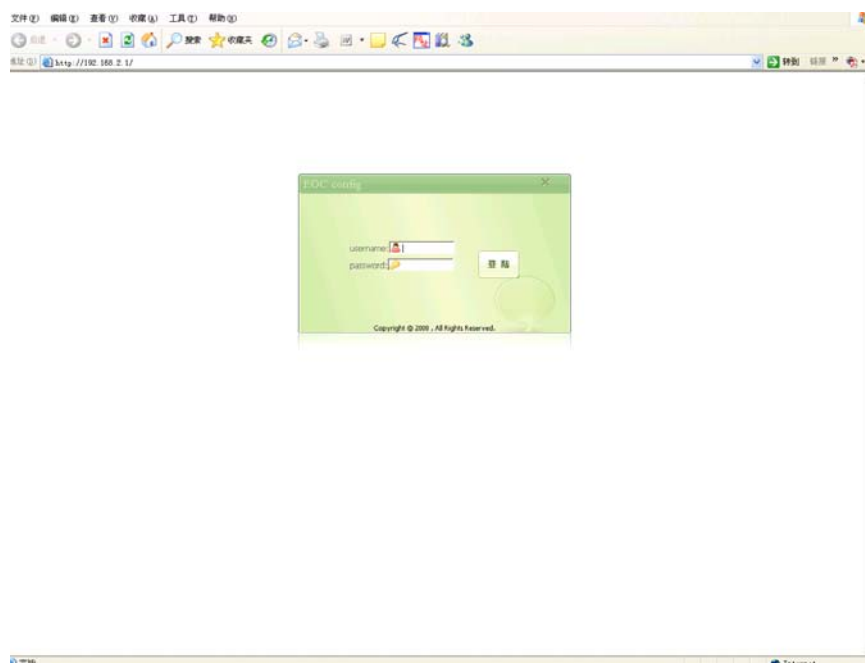
3 XL-PBW224CW Information Interface

XL-PBW224CW easy to set up, simple operation, users do not need to carry out any operation. XL-PBW224CW random will be attached to one for the equipment condition monitoring of private IP addresses, you can use a web

browser through the IP address of the page to enter the state of the state of observation equipment.

3.1 Login Page

(In this case to use the IE browser, IP address 192.168.2.1 as an example), enter in the address bar 192.168.2.1, landing interface appears, enter your user name (admin) and password (admin), as shown in Figure 3-1



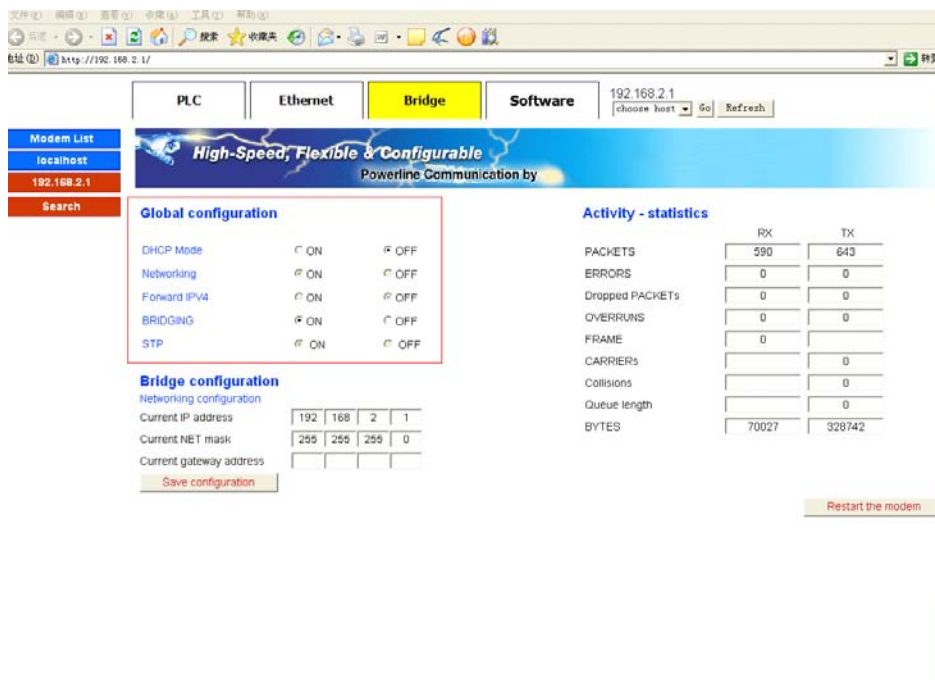
Pic 3-1

3.2 Bridge Page



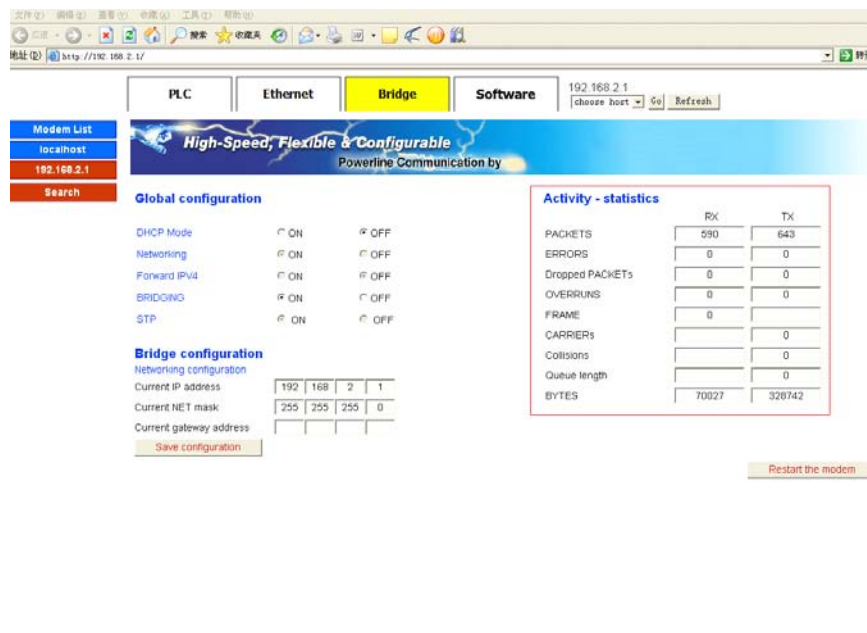
Pic 3-2-1

3.2.1 The basic configuration system information



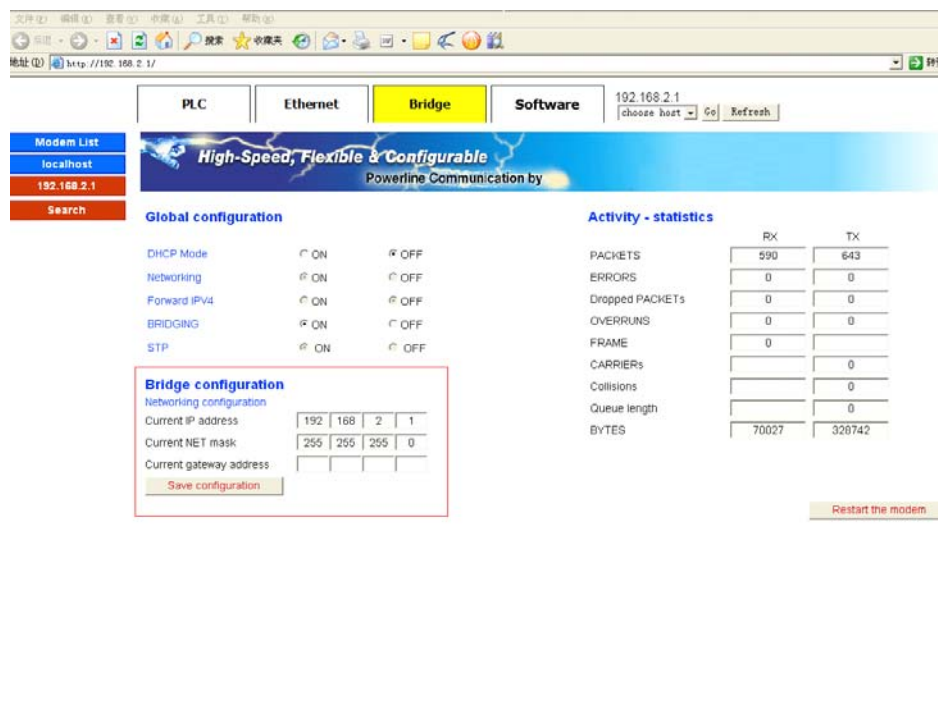
Pic3-2-2

3.2.2 BridgeSystems to send and receive data packets statistics



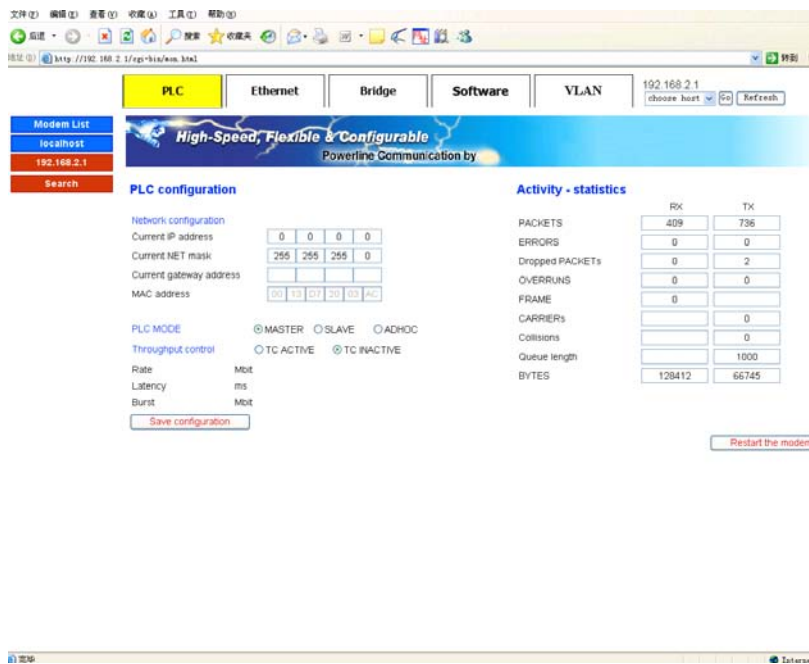
Pic3-2-3

3.2.3 IP Address distribution



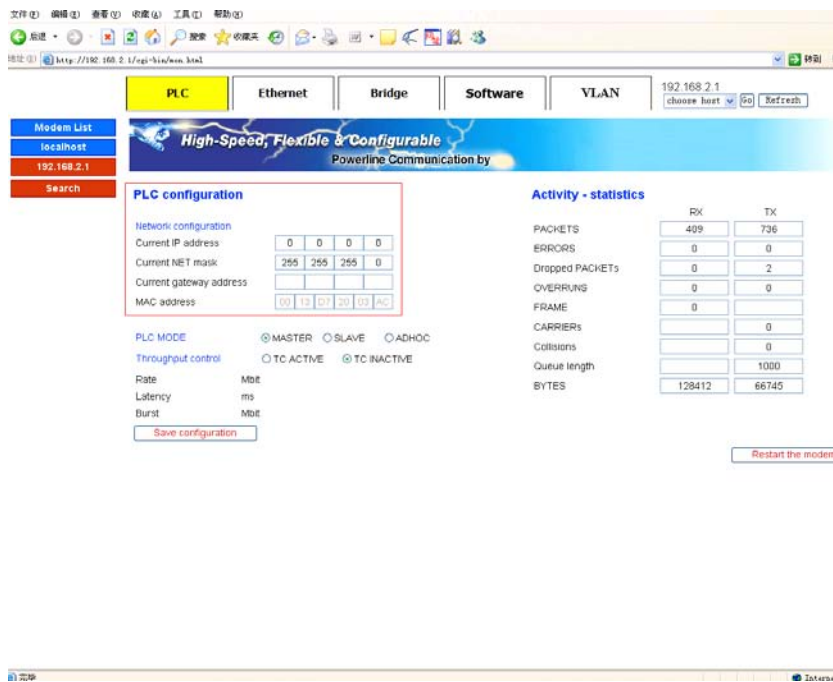
Pic3-2-4

3.3 PLC Page



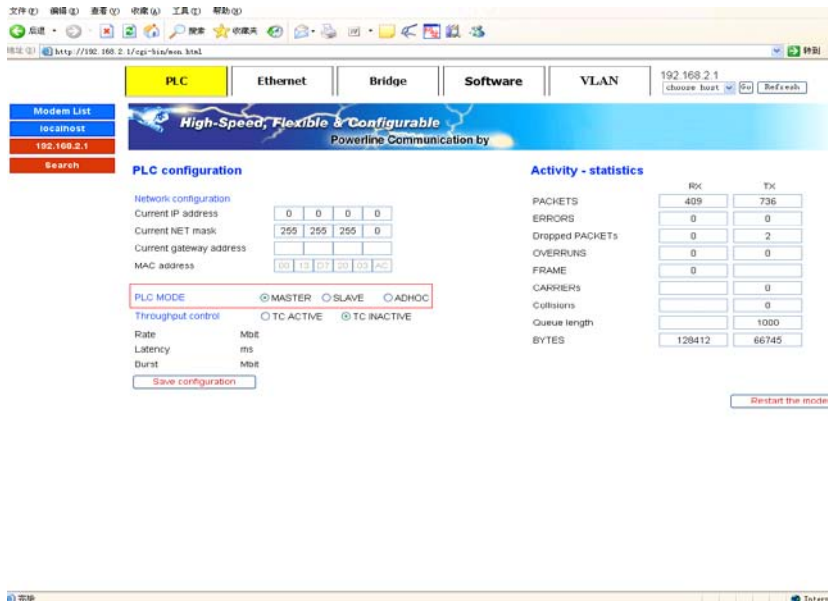
Pic3-3-1

3.3.1 PLC System Equipment Information



Pic3-3-2

3.3.2 PLC System Equipment style



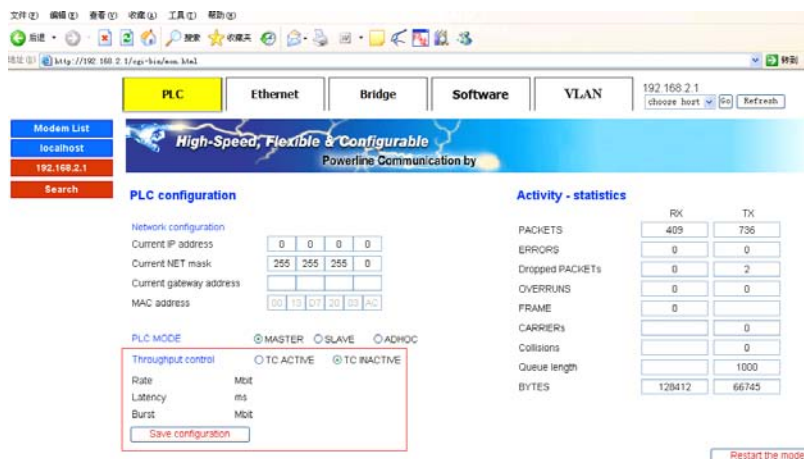
Pic3-3-3

3.3.3 PLC Flow Control Systems and Equipment

Click on "TC ACTIVE"

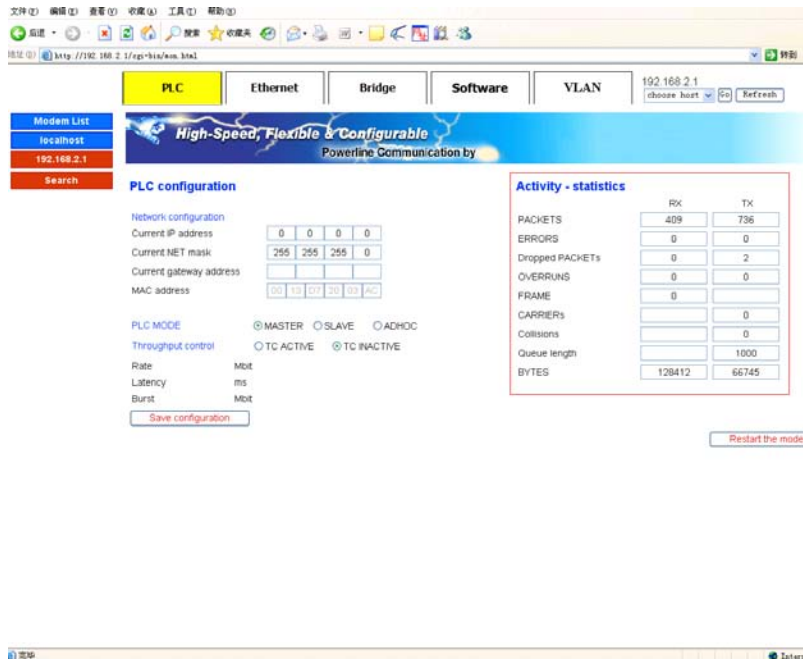
In the "Rate" column need to limit the rate of input

Click "Save Configuration" button to save



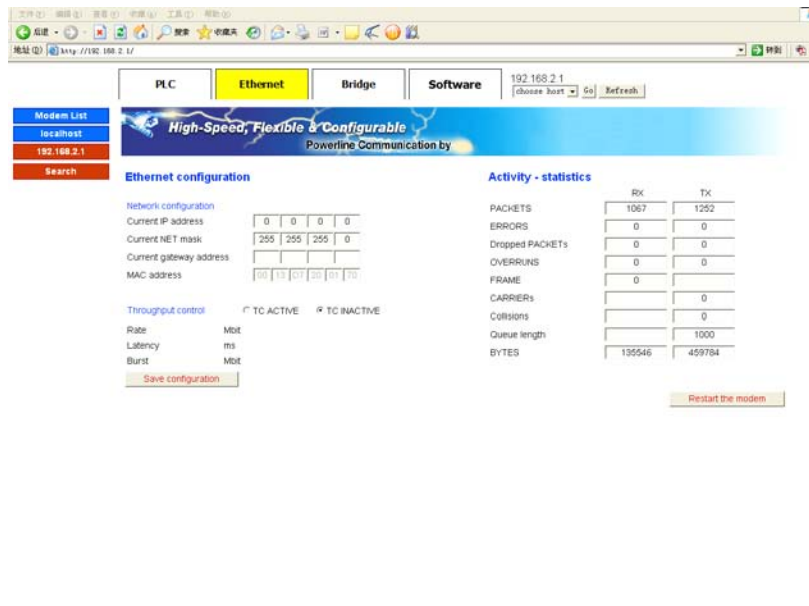
Pic3-3-4

3.3.4 PLC Systems to send and receive data packets statistics



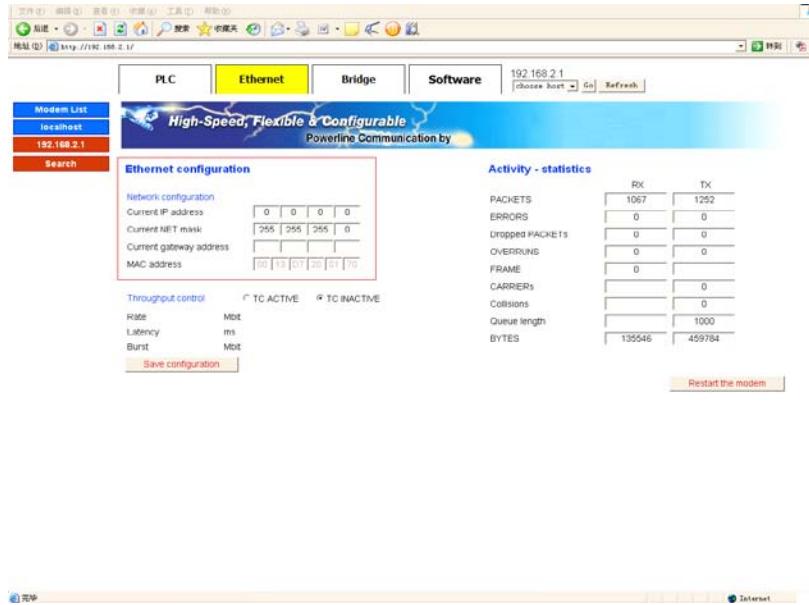
Pic 3-Pic-5

3.4 Ethernet Page



Pic 3-Pic-1

3.4.1 Ethernet link layer information



Pic 3-Pic-2

3.4.2 Ethernet Systems to send and receive data packets statistics



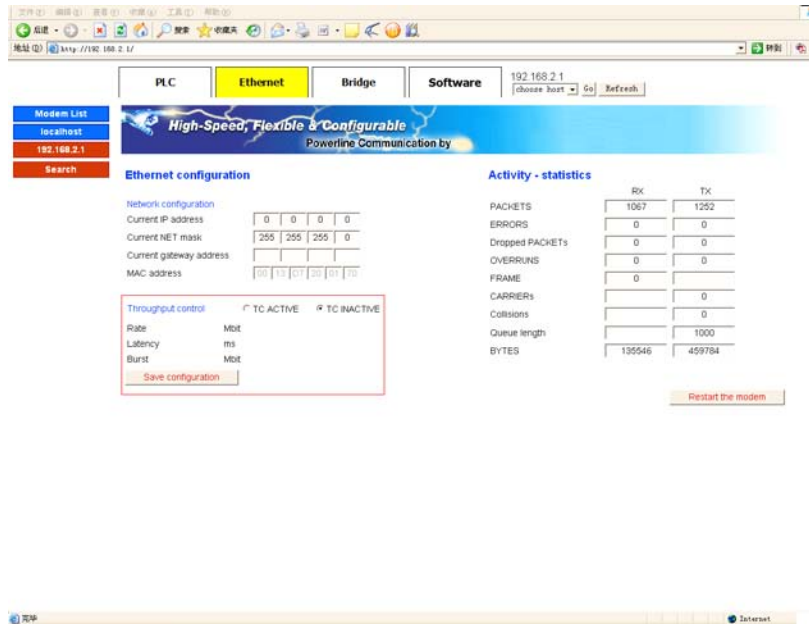
Pic 3-Pic-3

3.5.1 Current software version information

Click on "TC ACTIVE"

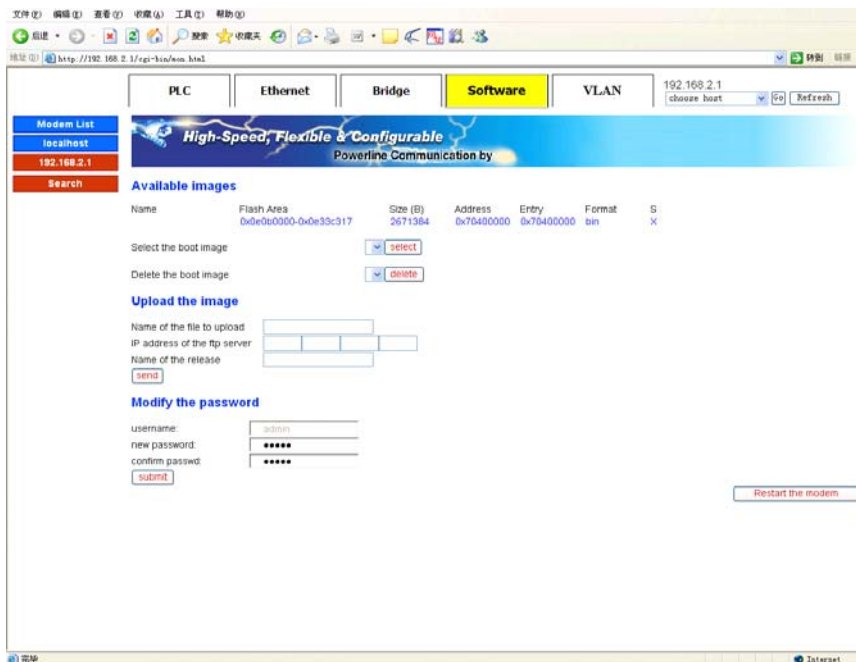
In the "Rate" column need to limit the rate of input

Click "Save Configuration" button to save

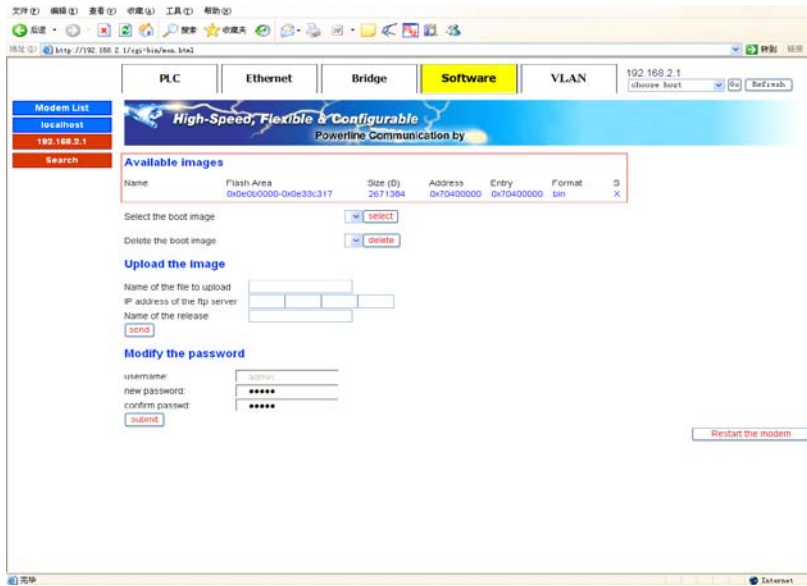


Pic 3-Pic-4

3.5 Software Page



3.5.1 Current software version information

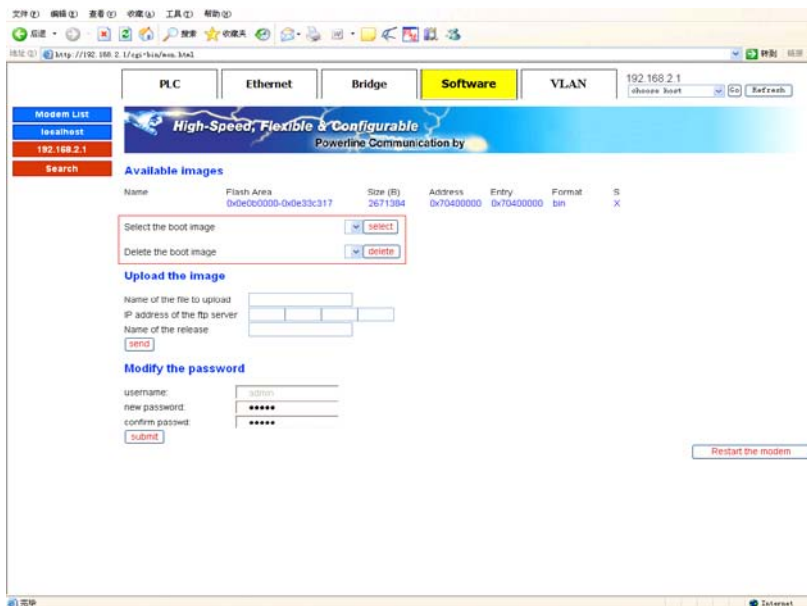


Pic 3-Pic-2

3.5.2 Delete procedures

Backup software to choose a name

Click Remove button.



Pic 3-Pic-3

3.5.3 Upload upgrade procedures

Enter promotion procedures need to upload the file name

Enter FTP server IP address

Enter the display name in the machine

Click "send" button

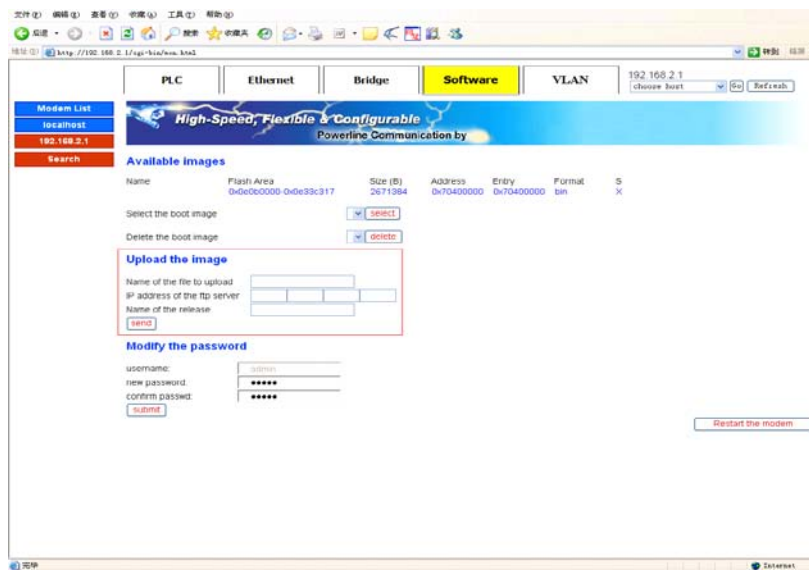
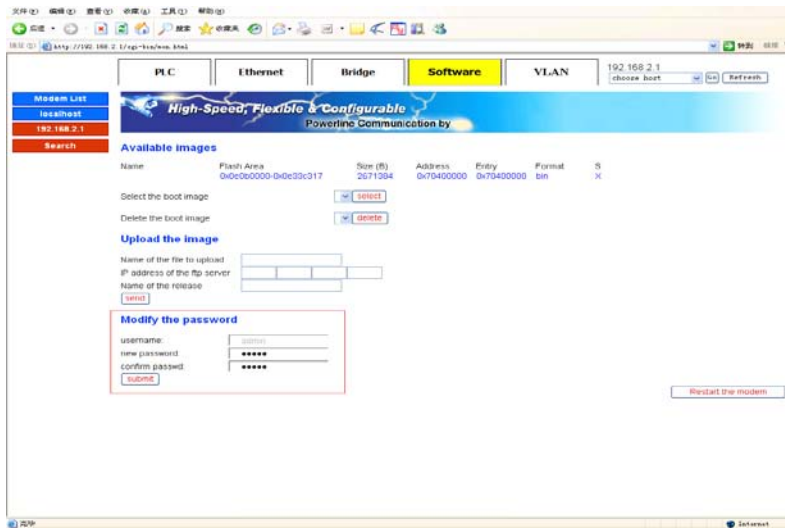


图 3-Pic-4

3.5.4 Change Keywords

Enter the need to amend the new password

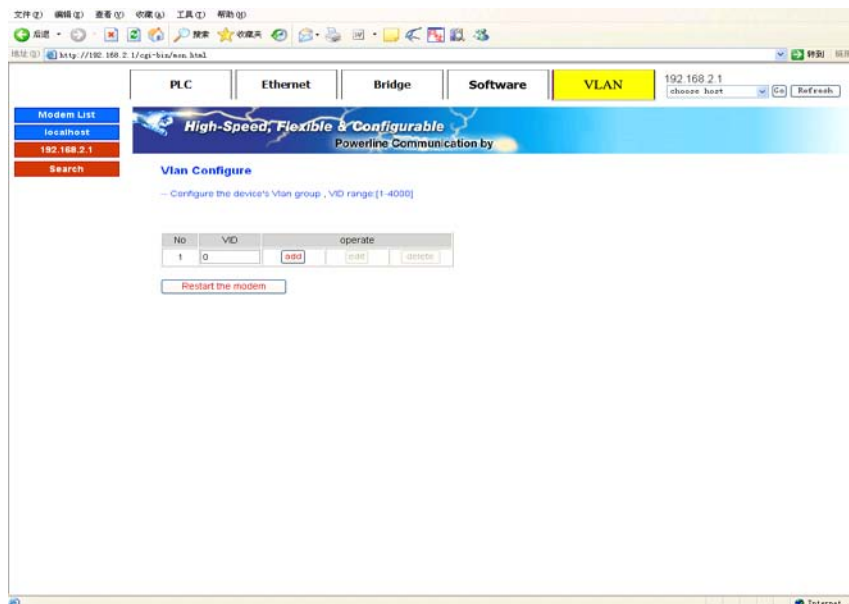
Re-enter new password to confirm



Pic 3-Pic-5

3.6 VLAN Page

Enter the need for the VID, click "add" button to add a VLAN



Pic 3-Pic

4 Attachment

4.1 Specification

4.1.1 Products Specification

Item	XL-
Network standard	IEEE802.3、IEEE802.3u
Link standard	IEEE HomePlug BPL
Physical layer bandwidth	224Mbps
Data throughput	Exclusive or shared 50Mbps
Work of the band	2—30MHz
work of a frequency bandwidth	Single Frequency 28MHz,
Broadband multi-carrier number	7 (Wavelet) X128 (carrier) = 896 (Carrier)
Communication	frequency division duplex / full-time
Security	-45dBuV
Network tolerance of the attenuation	70dB (0-60dB range of the average throughput of 50Mbps, 70dB at 35Mbps)
Output	110—135dBuV
Transmission media and impedance	TV Cable 75Ω
Power supply	AC 100V~265V

4.1.2 Environmental Characteristics

Temperature	-10—55° C
Working humidity	10%—90%

4.1.3 Application Characteristics

Security	VLAN (IEEE802.1Q) to ensure security and to reduce regional broadcasting
QoS	QoS (802.1p) priority to provide multimedia applications and bandwidth management

	multicast, multicast group of end-use of a common tone map in order to optimize data throughput.
--	--

4.1.4 Manage and Maintain

Manage	Telnet、SNMP
--------	-------------

4.1.5 Modulation

Modulation	OFDM
Modulation	TDMA+CSMA/CA
Modulation Way	None、BPSK、QPSK、16QAM、64QAM、256QAM、1024QAM

4.1.6 Instruction and Ports

LED Power indicator	Power power equipment status indicator Ethernet Ethernet indicator light System System Indicator Data Data Link light
Interface type	RJ45 output data interface (1 or 2) F-type coaxial mixed data entry interface RF TV Signal output interface DC Power Interface

4.2 Frequency Question Answer

Trouble phenomenon	Solution
POWER light does not shine	<ol style="list-style-type: none"> 1, check the power connector is correct. 2, check the power adapter match
Ethernet Light does not shine	<ol style="list-style-type: none"> 1, Check the validity of the cable connections, check whether the PC card's indicator light lit. 2, Check the card is working correctly, the specific Approach is to look at "Network Adapter" in PC have "?" or "!" Equipment. If so, please remove the equipment and Re-install. 3, otherwise they would be another card slot, if the replacement card is not enough, please.
No TV signal output	<ol style="list-style-type: none"> 1, Make sure Cable interface has been properly connected 2, Make sure that the normal instructions System indicator. 3, Make sure that operators have to apply for opening of related businesses.
Can not access the Internet	<p>Take model commonly used as an example (already installed on your computer dial-up software) explain:</p> <ol style="list-style-type: none"> 1, Make sure the problem does not exist in front. 2, Make sure that PC card property is set to automatically obtain IP address. 3, Make sure that IE browser proxy server settings are correct. 4, Please try to log multiple pages to verify that a site is not due to server failure.