



XL-SE64I / XL-SE64E
User Manual



Introduction

About this Manual

Thank you for using the product of XtendLan.

The **XTENDLAN XL-SE64I / XL-SE64E** products will be introduced throughout this manual. The information in the manual has been thoroughly checked before publication, but may not conform to the product actually delivered. Actual product specifications depend on the product shipped to you. Any update in the specifications or product-related information shall not be subject to further notice. For the latest information on the product, please visit the website at www.XtendLan.com or directly consult with your contact window of our sales.

Contents

Chapter 1	Product Information	4
1.1.	Features.....	4
1.2.	Hardware Introduction.....	4
1.2.1.	XL-SE64I Internal Encrypted Data Storage	4
1.2.2.	XL-SE64E External Encrypted Data Storage	5
Chapter 2	Installation	6
2.1.	Accessories Check.....	6
2.1.1.	XL-SE64I Internal Encrypted Data Storage	6
2.1.2.	XL-SE64E External Encrypted Data Storage	6
2.2.	Hardware Installation.....	6
2.2.1.	XL-SE64I Internal Encrypted Data Storage	6
2.2.2.	XL-SE64E External Encrypted Data Storage	9
2.3.	Formatting the HD.....	11
Chapter 3	Notes for Use	12
Appendix		
A.	Hard Drive Certification list.....	13

Chapter 1 Product Information

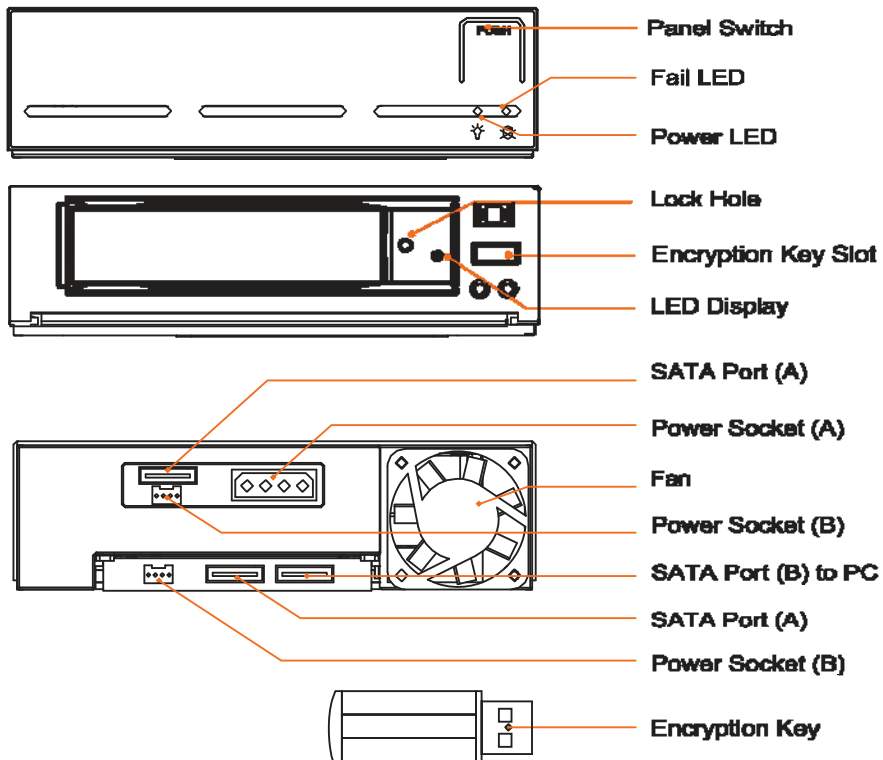
Personal innovations, technology researches, and client information are the most important data to maintain company reputation or personal privacy. The XTENDLAN XL-SE64I use DES (Data Encryption Standard) hardware encryption technology. Incorporating an encryption key like a USB flash drive, it provides users with a safe encrypted data storage solution to secure the information stored in a hard drive, without impact on the system performance. After the encryption is done, even you lose or throw away the hard drive, NO ONE is able to access the sensitive data in the hard drive without the encryption key.

1.1. Features

• Encryption all data in the HD	• Work as an encrypted boot disk
• Hardware encryption. No software installation is required.	• SATA to SATA Interface
• With DES hardware encryption, no impact on the system performance.	• Mobile Safety Box
• Higher security with the encryption key.	

1.2. Hardware Introduction

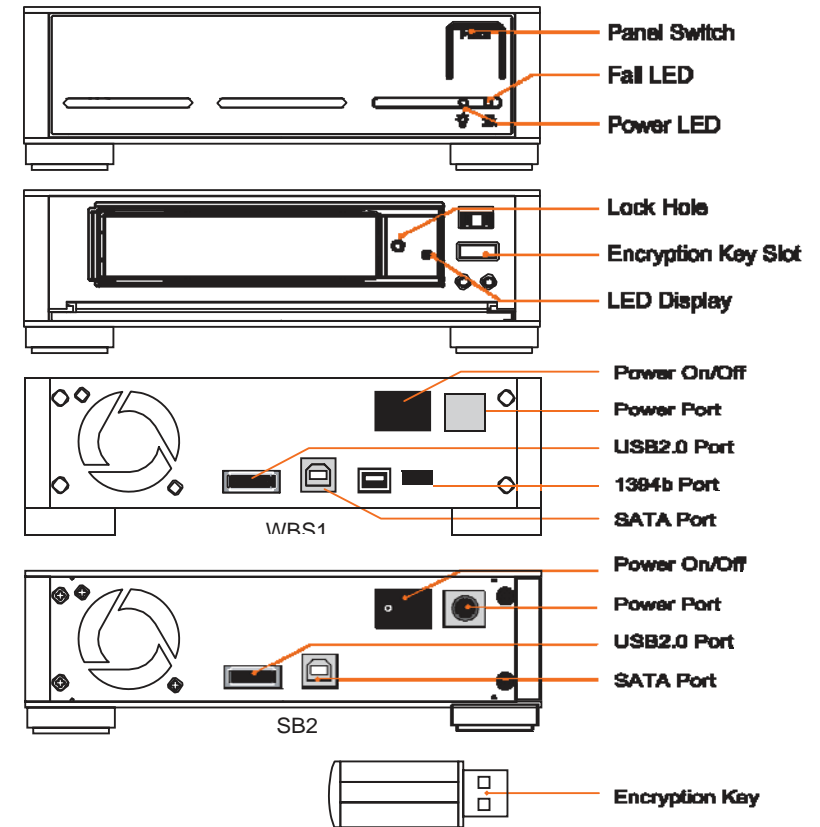
1.2.1. XL-SE64I Internal Data Encryption Storage



• Status Indications of LEDs:

1. When the power is turned ON, the power LED indicator will light on green.
2. The FAIL LED indicator will light on red, in case of the fan is malfunctioned or the system is over heated.
3. The Access LED indicator on the HD tray blinks when the data is accessed from the hard disk drive.

1.2.2. XL-SE64E External Data Encryption Storage



• Status Indications of LEDs:

1. When the power is turned ON, the power LED indicator will light on green.
2. The FAIL LED indicator will light on red, in case of the fan is malfunctioned or the system is over heated.
3. The Access LED indicator on the HD tray blinks when the data is accessed from the hard disk drive.

Chapter 2 Installation

2.1. Accessories Check

After you open the outer package, make sure that the following items are contained in the package:

2.1.1. XL-SE64I Internal Data Encryption Storage

- XL-SE64I product body
- 2 encryption keys
- Power Cord (5 cm)
- SATA Cable (5 cm)
- CD
- User Manual
- Accessory kit (including screws and a plastic key)

2.1.2. XL-SE64E External Data Encryption Storage

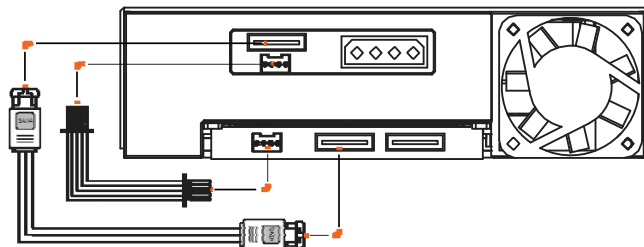
- XL-SE64E product body
- 2 encryption keys
- DC Adapter
- eSATA Cable
- USB Cable
- CD
- User Manual
- Accessory kit (including screws and a plastic key)
- 1394b Cable (WBS1 Only)

Please contact your distributors or sales representative, in case of any missing accessory or damage to the product body before unpacking. After making sure all hardware components and accessories are included, please refer to the following procedure to finish the hardware installation.

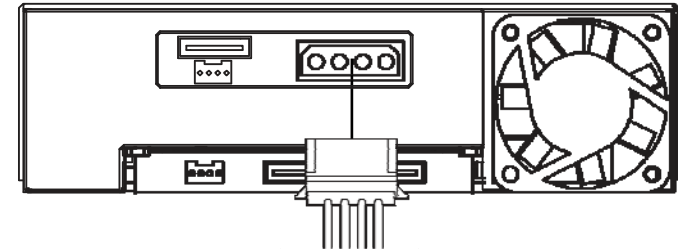
2.2. Hardware Installation

2.2.1. XL-SE64I Internal Data Encryption Storage

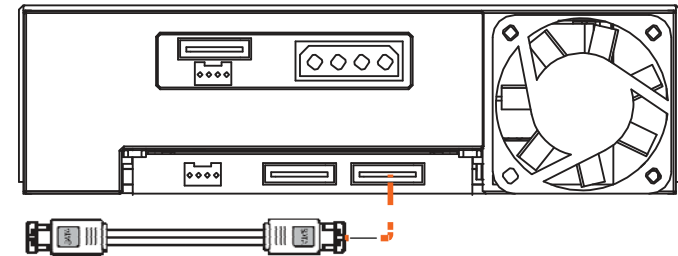
Step 1 Connect the power cord and SATA cable to the back of the hardware



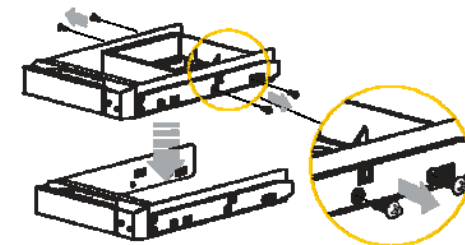
Step 2 Install the product body on the computer, fasten it with the screws that come with the accessory kit, and then connect the power cord



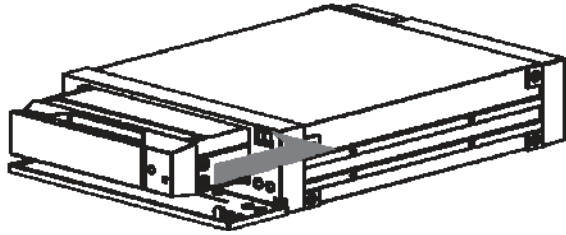
Step 3 Connect one end of the SATA cable to the SATA port on the product body and the other end to the SATA port on the motherboard



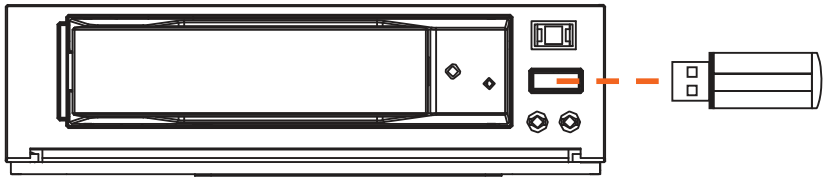
Step 4 Remove the tray and fasten the HD drive with the screws that come with the accessory kit



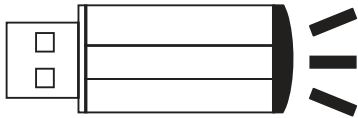
Step 5 Place the tray back in the product body



Step 6 Insert the encryption key into the encryption key slot in front of the product body properly



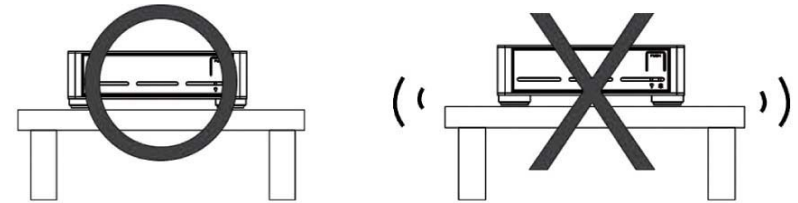
Step 7 After making sure all the hardware has been properly installed, turn ON the computer. The LED indicator on the encryption key will light on after a normal boot



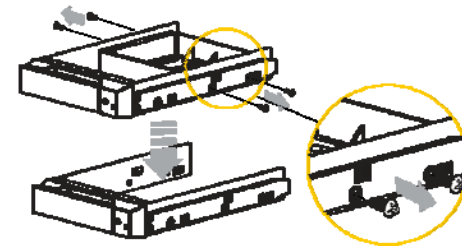
Step 8 Installation completed. You have successfully installed the XL-SE64E product.

2.2.2. XL-SE64E External Data Encryption Storage

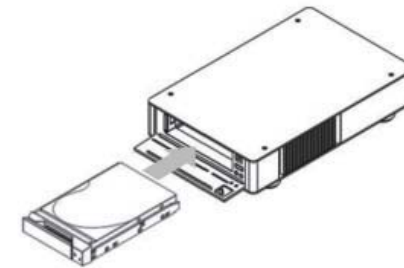
Step 1 Please place the XL-SE64E on a steady desk or space near the computer to avoid any damage to the HD drive due to any unexpected impact.



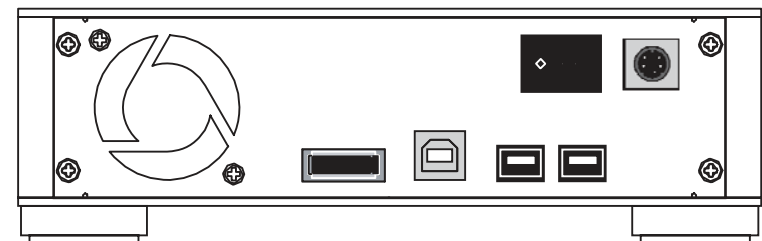
Step 2 Remove the tray and fasten the HD drive with the screws that come with the accessory kit.



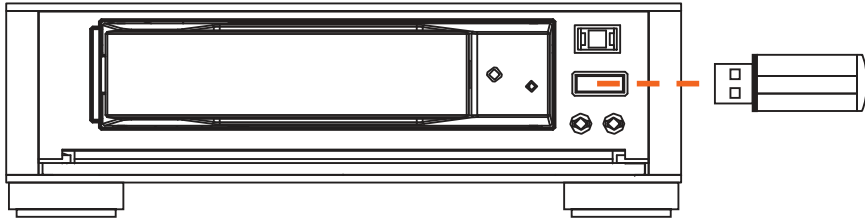
Step 3 Place the tray back in the product body.



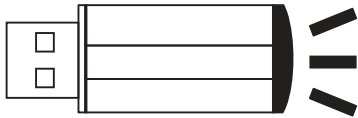
Step 4 Depending on your hardware, select one of the SATA port, USB2.0 port, or 1394b port on the back-end of the product body. Connect one end of the cable to the selected port and the other end to your computer. Then connect the power cord.



Step 5 Insert the encryption key into the encryption key slot in front of the product body properly.



Step 6 After making sure all the hardware has been properly installed, turn ON the device, and then the computer. The LED indicator on the encryption key will light on after a normal boot.

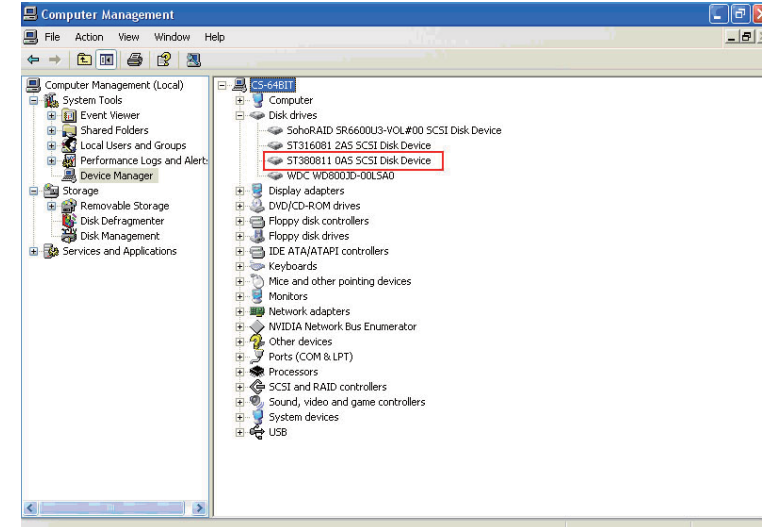


Step 7 Installation completed. You have successfully installed the XL-SE64E product.

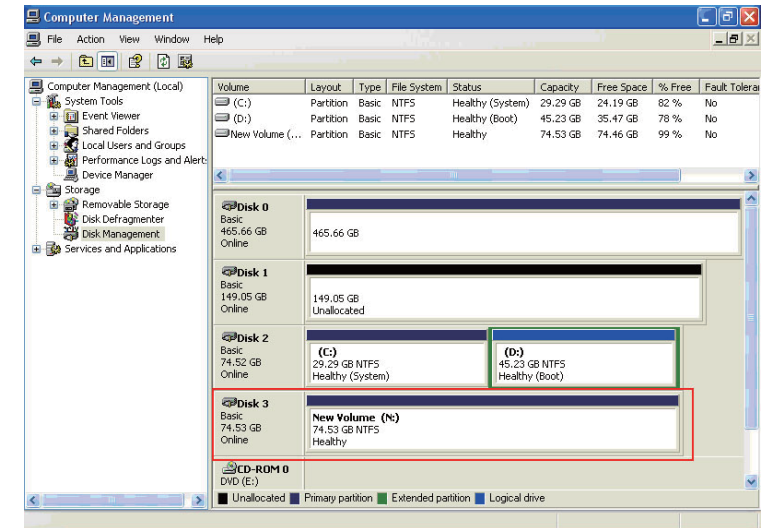
2.3. Formatting the HD

After the hardware has been properly installed, you will have to format the HD before storing data in it. Please follow the following procedures to format the HD.

Step 1 After the computer boots properly, please go to "Device Manager", in which you will see the newly added HD drive



Step 2 Select the newly added HD drive, and start initializing the HD. After the initialization is done, you can "format" the HD as a desired one according to your preference or need. After the formation, you can start using the HD device



Chapter 3 Notes for Use

To make sure that your data is fully protected, the XL-SE64I uses DES hardware encryption. Pay attention to following notes to avoid any data damage or loss while using the XL-SE64I/XL-SE64E :

1. To properly use the system device, please insert the encryption key first before turning ON the computer. This will make sure the encryption key is properly identified. If the startup order is reversed, the device will not be activated.
2. After the encryption key has activated, the HD will be protected. Without the proper activation of the hard disk lock, the data is not able to be accesses properly.
3. Please make sure that the encryption key is preserved with great care. If the encryption key is lost or damaged, there is no way to retrieve the data from the HD drive, neither do the system vendors have any remedy available for the data.
4. If you turn ON the computer without inserting the encryption key, the system will still be able to recognize the HD drive; however, the HD drive will be displayed as an unformatted drive. If the HD is formatted accidentally, the data is unrecoverable.

Appendix

A. Hard Drive Certification list

Vendor	Model
Seagate	80GB (ST3808110AS)
Seagate	160GB (ST3160812AS)
Seagate	200GB (ST3200827AS)
Seagate	250GB (ST3250824AS)
Seagate	500GB (ST3500641AS)
Seagate	750GB (ST3750640AS)
Western Digital	80GB (WD800JD-00LSA0)
Western Digital	500GB (WD5000KS-00MNB0)
Hitachi	400GB (HDS724040KLSA80)
Hitachi	500GB (HDS725050KLA360)
Maxtor	500GB (6H500F008A70A)